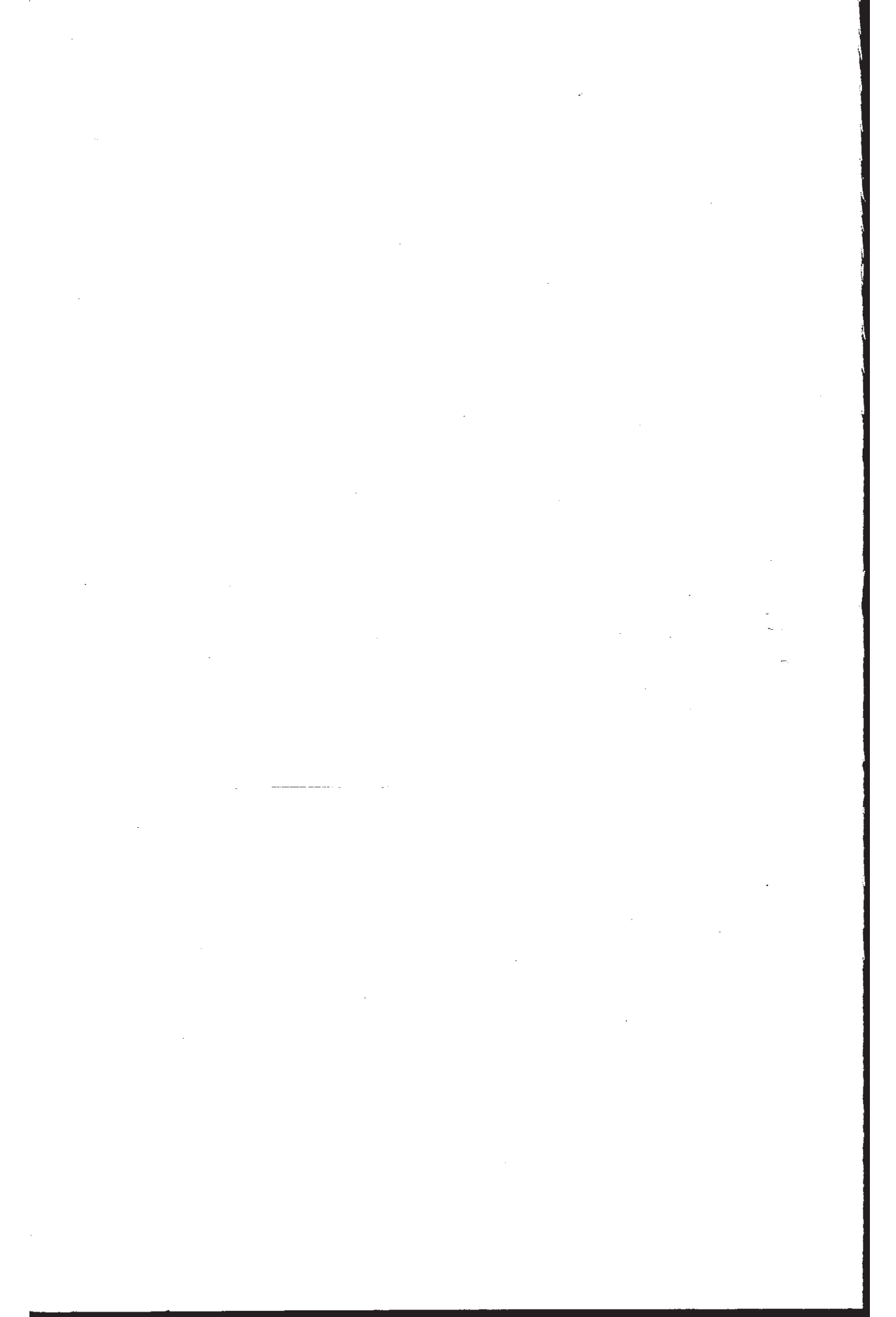




The University of Vermont

**2002-2003
CATALOGUE
ADDENDUM**

*(Applies to selected sections of the
2001-2002 Academic Catalogue)*





The
UNIVERSITY
of **VERMONT**

IMPORTANT

The 2002-2003 UVM Catalogue Addendum reports changes to **SELECTED** sections of the University of Vermont 2001-2002 Academic Catalogue. Editorial focus is directed to degree requirements, course listings, and other content areas important to academic advising during the 2002-2003 academic year. For a more comprehensive description of current academic programs at the University, consult the UVM Catalogue web site at *<http://www.uvm.edu/catalogue>*, as well as A-Z listings at *www.uvm.edu*.

ACADEMIC CALENDAR

FALL 2002

Classes begin	August 26	Monday
Labor Day holiday	September 2	Monday
Fall recess	October 18	Friday
Thanksgiving recess	November 27-29	Wednesday-Friday
Classes end	December 4	Wednesday
Reading and exam period	December 5-13	
Reading days	December 5, 7, 8, 11	
Exam days	December 6, 9, 10, 12, 13	
Reception for Dec. graduates	December 14	Saturday

SPRING 2003

Classes begin	January 14	Tuesday
Martin Luther King holiday	January 20	Monday
President's Day holiday	February 17	Monday
Town Meeting recess	March 4	Tuesday
Spring recess	March 17-21	Monday-Friday
Honors Day	April 25	Friday
Classes end	April 30	Wednesday
Reading and exam period	May 1-9	
Reading days	May 1, 3, 4, 7	
Exam days	May 2, 5, 6, 8, 9	
Commencement (<i>tentative</i>)	May 18	Sunday

Academic Calendar information for upcoming years is available on-line at:
www.uvm.edu/~facsen/?Page=calendars.html&SM=calendarmenu.html

TABLE OF CONTENTS

ACADEMIC CALENDAR	2
CHANGES TO GENERAL SECTIONS	5
DEGREE AND PROGRAM INFORMATION	8
COURSES OF INSTRUCTION AND FACULTY SECTION	15
ADMINISTRATORS AND TRUSTEES	32

CHANGES TO GENERAL SECTIONS

Introduction Pgs 3– 6

Pg 6 *Add to Accreditations:* EDUCATION – Athletic Training
– Commission on Accreditation of Allied Health Education Programs.

Admission to the University Pgs 7– 14

Pg 7 *Replace General Admission Criteria with the following:*

The University of Vermont selects those students who demonstrate the greatest potential for academic success at the University based on prior academic performance.

Recognizing the University's focus on engagement with local, state, national and global communities, admission policies focus on achieving geographic balance; variety of experience and background; and cultural/economic diversity within the fabric of its student population. As a state-assisted university, The University of Vermont has a special commitment to Vermont residents, a commitment reflected by ensuring that Vermont students receive priority consideration in the admissions process. Our commitment to forging a diverse educational community is manifested in a special effort to recognize and meet the educational needs of members of ALANA (African American, Latino, Asian, and Native American) populations.

Determining potential for a student to benefit from a UVM education lies at the heart of the work of the University's Office of Undergraduate Admission. This determination is based on a blending of the academic record with other attributes in a student's background. A candidate for admission must demonstrate an ability to perform at a high level scholastically. For a first-year student, this is determined by performance in high school and on standardized examinations. Transfer and non-traditional candidates will be evaluated on the results of completed college-level course work, standing at previous institutions, and/or other educational credentials appropriate to student age and educational history. At a minimum, candidates for admission are expected to complete the entrance requirements established by the UVM faculty to ensure exposure to broad fields of intellectual inquiry; some programs require further study in areas relevant to professional development. Additionally, to form a comprehensive view of a student's candidacy, University admission staff gauge the rigor of a student's program by reviewing breadth of study and course levels (e.g. Honors and AP course work); measure the student's relative standing in the graduating class through grade point average, class rank, or other indices; observe trends in the student's performance over time; and assess the competitive nature of the high school and/or college environment. Standardized test scores are viewed as one of several indicators of student academic potential and not as a single criterion for admission to the University.

Beyond academic credentials, other characteristics and experiences in a student's background are reviewed in making an admission decision – particularly when the academic record in isolation is not decisive. Required student essays, recommendations, and other evidence of the student's life experiences are examined to more fully understand the student's potential to succeed and contribute at UVM. All achievements, both academic and non-academic, will be considered in the context of the opportunities an applicant has had, hardships or unusual circumstances faced, and the response to these. Evidence of special talents, community service,

imagination and tenacity are also considered indicative of promise for future contributions to the life of the University and to its mission. Admission decisions are made without regard to family financial circumstances, although University financial aid and scholarship funding is deployed on the basis of academic merit as well as financial need.

Although University Admissions staff makes final admission decisions, consultation with academic unit representatives precedes any decision for a student whose credentials may not be clear and decisive. Admission policies are made by the Department of Admission in collaboration with the schools and colleges that constitute The University of Vermont and are subject to review by The University of Vermont Faculty Senate and the Board of Trustees.

Pg 9 Requirements and Recommendations by UVM College/School - College of Engineering & Mathematics. *Modify requirement to read:* 4 years of mathematics, including trigonometry, is required.

New England Regional Student Program *Change program offerings to:* UVM programs offered for the 2002-03 academic year are: *Botany* to residents of MA; *Canadian Studies* to residents of CT, MA, NH, and RI; *Classical Languages* (Greek and Latin) to residents of CT and RI; *Forestry* to residents of CT and RI; *Latin* to residents of CT and RI; *Russian* to residents of CT, ME and RI.

Pg 10 Transfer Student Admissions. *Replace the final paragraph with the following:* The minimum grade point average requirement for all transfer candidates is a 2.5 (C+) average on a four-point scale. Generally, to be competitive a 3.0 average or above is recommended.

Pg 12 Residency Regulations. *Add:* web-site: www.uvm.edu/~uvmppg/ppg/student/registration.html.

Pg 13 St. Michael's College and UVM Articulation Agreement. *Change information in column two as follows:* Item 8. c. completion of 11 – 12 credits of UVM engineering courses, including the following table of courses, with a minimum GPA of 2.0 in these courses. *Civil and Environmental Engineering* (12 hours) CE 1, 10, 12; ME 12; ENGR 2. *Mechanical Engineering* (11 hours) ME 12, 40, CE1. *Electrical Engineering* (10 12 hours) EE3/81, 4/82; ENGR 2.

Pg 14 Admitted Student Information – Housing. *Change first line to read:* First-time first- and second-year students are required to live in on-campus housing. *Add at end of paragraph:* Housing is not guaranteed for transfer students.

Student Expenses Pgs 15-17 (<http://www.uvm.edu/~studentfinances>)

Pg 15 ESTIMATED YEARLY EXPENSES

Modify expenses for 2002-03 as follows:

	Resident	Nonresident
Tuition	\$8,320	\$20,810
Housing (Double Room)	\$4,232	\$ 4,232
Meal Plan	\$2,146	\$ 2,146
Comp. Student Fee	\$ 654	\$ 654
Student Accident & Sickness Insurance	\$ 974	\$ 974

Pg 15 **TUITION.** *Modify expenses for 2002-03 as follows:*

Vermont Residents: \$347 per credit hour through 11.5 hours. From 12-18 credit hours - \$4,160 per semester plus \$347 per credit hour for each hour in excess of 18 hours. *Nonresidents:* \$867.00 per credit hour through 11.5 hours. From 12-18 credit hours - \$10,405 per semester plus \$867.00 per credit hour for each hour in excess of 18 hours.

Pg 15 **HOUSING CHARGES.** *Modify the first two sentences of paragraph 3 to read:* Students not required to live on campus who wish to cancel a housing agreement must do so in writing. Students cancelling before July 1 will be assessed a \$50 penalty and from July 1, but before September, 2002, a \$150 penalty.

Pg 16 **FEES FOR PART-TIME STUDENTS.** *Modify expenses for 2002-03 as follows:*

Hours Enrolled Per Semester	Fee
4	\$58
5	68
6	76
7	86
8	96
9 to 11.5	104

Pg 17 **PAYMENT OF OBLIGATIONS.** *Modify expenses in paragraph 2 as follows:* The yearly payment plan service charge has increased from \$100 to \$130.

Pg 17 **CANCELLATION, WITHDRAWAL, MEDICAL WITHDRAWAL, SUSPENSION, DISMISSAL.**

100% tuition and fees credit adjustment prior to the end of the first two weeks of classes.

50% tuition and fees credit adjustment through the third week of the semester.

25% tuition and fees credit adjustment through the fourth week of the semester.

No adjustment after the fourth week of the semester.

Financial Aid and Scholarships Pgs 18-19 For more information, visit the scholarship website: <http://www.uvm.edu/financialaid/?Page=uvmscholarship.html>.

DEGREE AND PROGRAM INFORMATION

Studying the Environment Pgs 39 – 41

Pg 40 *Add to advising track options for Environmental Sciences:* Students can also propose a self-designed track in a particular area of interest such as energy and the environment.

The College of Agriculture and Life Sciences Pgs 42 – 53

All references to AGRI 99, Beginnings - 2 credit hours throughout the CALS programs should be changed to AGRI 195, New Beginnings – 6 credit hours.—All references to Animal Sciences should be changed to Animal Science.

Pg 42 *Delete from list of Degree Programs:* Family and Consumer Sciences Education
Add to list of Degree Programs: Sustainable Landscape Horticulture (~~Was~~ Urban Forestry and Landscape Horticulture)

Pg 43 **CALS CORE CURRICULUM.** *Under Skills, B1.a. Modify language to read:* Competency can be met by satisfactory completion of AGRI 183 or AGRI 195...

Pg 45 **BIOLOGICAL SCIENCES CORE.** *In paragraph 3, Delete:* Animal Sciences/ Nutrition & Food Sciences 43; *Change:* Math 19,20 or Math 21 to Math 19, 20 or Math 21, 22.

Pg 46 *Core Courses for Animal Science Majors. Change requirement as follows:* AGRI 85 or Computer Science 2 or New Beginnings AGRI 195.

Pg 48 **Biological Sciences.** *Add to list of Biological Sciences Core requirements in paragraph 2:* general biology.

Change to courses required for B.S./D.V.M. program - Delete: Nutrition *Add:* General Biology 3; Anatomy 3; Physiology 3. Director's phone number is (802) 656-2980.

Pg 50 **Community Development and Applied Economics.** *Change to General Requirement section: Delete:* CDAE 254; *Add:* Econ 172 or CDAE 254. *Change to Req. Courses in Int'l Devel & Ag Econ and to Req. Courses in Small Business: Delete:* CDAE 253; *Add:* Econ 171.

Pg 51 **Nutrition and Food Sciences.** *Course requirements for all Department Majors — modify sections I and III as follows:*

I. General Education Studies for all Majors: Communication Skills (3 hours + AGRI 195): English 1 (or equivalent); Speech: AGRI 195 (or equivalent). Fine Arts and Humanities (6 hours): Two unspecified courses. Social Science Core (6 hours): Psychology 1; Sociology 1 or 109, or Social Work 47. Basic Science Core* (20 hours): Chemistry 23 (or 31); 42 (or 141); Anatomy and Physiology 19-20; Biochemistry 201 and 202. Analytic Sciences Core* (6 hours + AGRI 195): Statistics 111 (or equivalent); Computer Science: AGRI 195, or CS 2 or CS 3 (or equivalent); Mathematics 9 or higher; AGRI 195 (6 hours). CALS first year Orientation (7 credits): Race and Culture: EDSS 11 (or equivalent); New Beginnings: AGRI 195. Physical Activity (2 credits): Two unspecified courses.

III. Department Major Requirements: *Dietetics* (25 hours): NFS 150, 250, 260, 261, 262, 263; BSAD 120; EDFC 123; Electives (20-42 hours). *Nutrition and Food Sciences* (12 hours): In consultation with the student's academic advisor, select four additional courses, at least two must be at the 200 level. Electives (33-55 hours). For Athletic Training add EDPE 23, 46, 157, 158, 166, 167, 185, 186, 187, 188, 200, PEAC 28.

Pg 52 *Nutrition Education* and *Sports Nutrition* department options. *Delete these entries.*

Pgs 52-53 **Family and Consumer Sciences Education.** *Delete program section.*

Pg 53 **Consumer Economics.** *Change requirement to read:* Fifteen credits including 9 credits in required courses...

Pg 53 **Molecular Genetics.** *Change requirement to read:* Core requirements are MMG 101, 102, 211, and Botany 132, plus an additional six credit hours.

The College of Arts & Sciences Pgs 54 - 69

Pg 56 **Distribution Requirements.** *Add:* History 46 to approved courses listed in footnote ¹; Psychology 269 to approved courses in footnote ². Mathematics: *Replace existing text with:* "a student who has achieved a score of 4 or better on the Calculus AB or a score of 3 or better on the Calculus BC Advanced Placement Tests will be exempt from this requirement."

Pg 60 *Russia/East European Area Studies.* *Replace existing text with:* A. 30 hours of required courses to include the following: Two courses from HIST 27, 137, 138; ECON 116; POLS 172; WLIT 118; two courses at the 100 level or above in Russian; three additional courses in the major, chosen in consultation with an advisor in the major. B. Recommended Courses: Area and Int'l Studies 91.

The program also offers an interdisciplinary Individual Design Major in Russian/East European Studies and Business. The program of study must be planned with a member of the Russian/East European Studies faculty.

Required courses (35 hours): Two courses in Russian at the intermediate level; four courses in Economics including 116; one Russian/East European Area Studies course other than those in Economics; two courses in Business Administration; two approved electives at the 100 level or above.

Pg 61 **BIOLOGY.** *Add the following concentration:* Neurobiology: This concentration focuses on molecular and cellular aspects of the nervous system. Funding from the Howard Hughes Medical Institute allows students to take courses offered by faculty of three departments. Three courses are required, Biology 261 and 295 (Neurobiology Lecture and Neurobiology Laboratory) and PSYC 221 (Physiological Psychology). Students may also take ANNB 202, PSYC 121, 220, 223, PHRM 290 as well as other advanced courses in cell and molecular biology.

Pg 61 **Classical Civilization.** *Replace existing text with:* 36 hours consisting of 30 in the Major Discipline and 6 in Related Courses. Of these 36 hours, 12 must be at the 100-level or above. Major Discipline: All courses in Classics, Latin, Greek, Ancient History, and Ancient Art are applicable, of which 1 course in Ancient Art

(Art 146, 148, or 149) and any 2 courses in Ancient History (Classics 21, 23, 121, 122, 149, 221, 222) are required. Related Courses: For a list of approved related courses in Fine Arts, Humanities, Social Sciences and Natural Sciences, students should consult with the Classics Department. Foreign Language: Fulfillment of the language distribution requirement of the College of Arts and Sciences is required, preferably with Latin or Greek.

Pg 62 **ECONOMICS.** *Replace existing text with:* Thirty-three hours in Economics and three hours in Mathematics as follows: Economics 11, 12; Math 19; three courses numbered 60-160 or 194-196, two of which must be numbered 110 or higher; the methods and theory courses in Economics numbered 170, 171, 172; and three Economics courses numbered 210 or higher. No more than three credits from Economics 297, 298 (Readings and Research) may be applied towards the major. Students are urged to take Math 19 early in the program.

Pg 62 **ENGLISH.** *Change existing text within paragraph to read:* Of the credit hours above 100: ... (c) at least three hours must be in 19th century literature (listed in departmental offerings as Category C; usually numbered 141 – 147 and 241 – 242, but courses with other numbers may also fulfill category C; check Departmental offerings for each term).

Pg 62 **FRENCH.** *Replace existing text with:* Thirty-three credit hours in French numbered 100 or above, of which fifteen credits must be at the 200-level. Required courses: French 101 and French 111 or 112. Literature requirement: twelve credits (including 111 or 112). Culture requirement: three credits (104, 105 or 292). NOTE. Only three credits of Readings and Research (197, 198) and Advanced Readings and Research (297, 298) may be counted toward the major.

Pg 63 **Applied and Interdisciplinary Mathematics.** *Change existing text within paragraph to read:* The requirements for this option are: (a) Math 21, 22, 121, CS 21, Math 124, 230 and 237; (b) at least nine additional hours in mathematics, statistics, or computer science courses number 100 or above, at least three of which must be in mathematics or statistics, at least six of which must be numbered 200 or above; (c) an approved minor.

Pg 64 **RELIGION.** *Add to description of major.* "Up to six hours in related courses may be substituted. A list of approved courses is available from the Religion department."

Pg 65 **SOCIOLOGY.** *Add to approved courses* in "Social Change and Development" 103, 203; in "Culture, Institutions & the Individual" 161, 252, 288, 289; in "The Life Course" delete 288, 289.

Pg 65 **SPANISH.** *Change existing text within paragraph to include:* add 281 to the parenthetical list of courses in Spanish American literature.

Pg 66 **Russian/ East European Studies.** *Replace existing text with:* Twenty hours to include: Russian 51, 52 or its equivalent and four courses from the following: Economics 116; World Literature 118; History 27, 137, 138; Political Science 172.

Pg 66 **East Asian Languages.** *Replace existing text with:* CHINESE. Fifteen credit hours of Chinese with at least eight of those hours at the 100 level, including 102 or its equivalent. Three credit hours at or above the 100 level in Chinese linguistics or literature may be substituted for three credits of language study beyond 102 or its equivalent.

Pg 66 **JAPANESE.** Fifteen credit hours of Japanese with at least eight of those hours at the 100 level, including 102 or its equivalent. Three credit hours at or above the 100 level in Japanese linguistics or literature may be substituted for three credits of language study beyond 102 or its equivalent.

Pg 67 **FRENCH.** *Replace existing text with:* Eighteen hours in French numbered 100 or above. Required courses: French 101; and three of the following four: 104, 105, 111, 112. Six of the 18 credits must be in courses at the 200-level. Readings and Research (197, 198) or Advanced Readings and Research (297, 298) may not be counted toward a minor.

Pg 68 **CROSS-COLLEGE MINORS --AGRICULTURE AND LIFE SCIENCES.** *Add the following text:* Animal Science. Five courses with a minimum of 15 credit hours, including Introductory Animal Science (ASCI 1), two courses in Core Science including ASCI 43, 110, 122, 141, 205, 215, 216 and two courses selected from Applied Sciences including 113, 115, 117, 118, 134, 135, 161, 211, 220, 230, 231, 233, 234, 263, 264. At least 8 credits must be at the 100 level, 3 of which must be at the 200 level. Acceptance into this program is by application only. Contact Dept. of Animal Science, 102 Terrill, for more information.

Consumer Economics. Replace existing text with: Fifteen credit hours including nine credits in required courses CDAE 127, 157, and 255; and six credit hours from restricted electives: CDAE 102, 128, 158, 159, 250.

Sustainable Agriculture. Replace existing text with: Fifteen hours to include: CDAE 61, CDAE 208, PSS 152, one elective at 100 or 200 level in AGRI/ASCI/CDE/PSS (see list of approved electives in Department or Dean's Offices) and three to six hours of internship at 100 or 200 level in AGRI/ASCI/CDAE/PSS.

Pg 69 *Add to the list of minors available to non-A&S degree students:* Chinese and Japanese.

The College of Education & Social Services Pgs 70 - 81

Pg 70 **Degree Programs.** *Add to list:* Teacher Education/Family and Consumer Sciences. The Family and Consumer Sciences program offers licensure for grades 7 - 12.

Pg 70 **Degree Requirements.** *Modify list of Accredited Programs to read:* Teacher Education programs (Art, Early Childhood Education PreK-3, Elementary, Family and Consumer Sciences, Middle Level, Music, Physical Education and Secondary Education) by the VT State Dept. of Education And NCATE.

Pg 72 **SOCIAL WORK PROGRAM.** *Change existing text in mid- paragraph 5 to read:* "...completion of the initial Social Work courses (SWSS 2, 3, 5, 47, 48, 167) with a minimum grade of C; completion of the upper level..."

Pg 72 - 73 **Reqs. for Teacher Prep. Programs.** *Add the following text:* *Intercollege Transfer* Students transferring to the College of Education and Social Services for the Teacher Education programs are required to have a minimum overall grade point average of 2.5 or higher and it must be possible to earn an overall average of 3.0 before reaching program completion.

Add the following text: Students in Middle Level Education complete an Individually Designed Interdisciplinary Major Concentration (IDIMC).

Change existing text within paragraph 3 of Academic Major to read: Students in Early Childhood, Elementary Education, Family and Consumer Sciences, and Physical Education complete a 30 hour (minimum) major concentration and...

Pg 79 Secondary Education (Seven through Twelve). *Change text as follows:* **General Education Component** (Minimum of 27 credits); *Delete from list of course requirements:* Speech/Theatre (or demonstrated competence)*; delete corresponding asterisk.

Professional Education Component. *Change first line text:* From (33 credits) to (42 credits).

Pg 80 Postbaccalaureate Teacher Preparation Program. *Add to list of entrance criteria:* 6. Middle level candidates: Previous coursework must include two approved areas of concentration, with 18 credits in each.

Change current entry "6. For secondary candidates" to "7. For secondary candidates: Previous course work must include a minimum of 30 semester hours with a minimum GPA of 2.75 in one of the academic... for the major academic concentration."

The College of Engineering and Mathematics Pgs 82– 94

Pg 82 DEGREE PROGRAMS. *Delete:* Statistics as a major under the Bachelor of Science; *Add:* Statistics as a major under the Bachelor of Sciences in Mathematics.

Pg 82 AREAS OF STUDY. *Add:* Minor in Mathematics. *Pure Mathematics:* Math 219 or equivalent), 22, 52, or 121, and nine additional credits in Mathematics courses numbered 100 or above. Computer Science or Computer engineering majors may substitute Math 54 for 52. The course plan for a mathematics minor must be approved by a mathematics faculty advisor. *Applied Mathematics:* Fifteen hours of mathematics courses numbered 52 or higher, including one of 230, 237, 271.

Pg 83 Computer Science Curricula. *Change text for B.S., Computer Science Major requirements to read:* Computer Sciences; 21, 26, 100, 101, 103, 104, 201, 224 or 243, 292, plus fifteen additional credits (five courses) of 200 level courses (not more than three credits of which may be independent study).

B.S., Computer Science and Information Systems Major. Change first line of text for to read: A minimum of 128 credits (126, if the student is exempt from the PEAC) are required as follows:

Pg 84 Engineering Curricula. *Edit paragraph 3 to read:* Courses in the humanities and social sciences (HSS) are required in engineering programs to broaden the student's understanding of humankind and relationship in human society. HSS electives may not be taken on a pass/fail basis. Sixteen to 18 credit hours, depending upon the major, must be selected from the list presented here.'

Edit paragraph 4 to read: Students in Civil Engineering, Engineering Management, Electrical Engineering and Mechanical Engineering must include a three-credit

cultural diversity course as one of their required humanities and social sciences courses. A list of these courses is available from your advisor or the Dean's Office.

Approved Humanities Courses. *Modify list as follows:* Remove column titled "Category" and headings underneath. *Delete the following courses:* AH95, AGRI 95, Education/Early Childhood and Human Development: 60, 61, 62, 63, 65, 260; English 4 and Film courses; Environmental Studies 70; Geography 3, 58, 59, 61, 146, 158, 170, 171 and 174-197; Intl. Studies 7-93; Military Studies 2, 4; Psychology 205, 206, 237; Resource Economics 121; Romance Languages: all courses; Sociology: all courses except 100, 274, 275, 285, 286, 288, 289; Theatre 136, 137, 138.

Add the following courses: ANTH 201; CMSI 1, 2, 51; CDAE 102, 156, 171, 218; FREN: all courses; GEOG 73, 151, 154, 155, 170-170; HDFS 5, 20, 60, 61, 65; ITAL: all courses; PSYC 15, 163, 230, 231; PA 206; SCO 1-57, 101-171, 202-272; SPAN: all courses; THE 41, 150, 151; VS 52, 64, 123, 160, 184.

Delete footnote 1 and 2 at the end of the list on page 84.

Pgs 85 – 92 **Note:** Modifications have been made to the recommended curricula for the various engineering programs. This information is not summarized in this addendum, but is available in the Dean's Office and will be available in the on-line catalogue.

Pg 89-90 **Mechanical Engineering.** *Delete from list of options in paragraph 2 (3) Manufacturing Engineering (126 semester hours).* *Delete:* Manufacturing Option curriculum on pgs 90-91.

Pg 92 **A. Major Courses - Applied and Interdisciplinary Mathematics.** *Change requirement to read:* A minimum of 18 additional hours in Mathematics, Statistics, or Computer Science courses numbered 100 or above. Of these 18 hours, 6 must be in Mathematics or Statistics, and must be numbered 200 or above.

College of Nursing and Health Sciences* Pgs 95 - 100

**Note: Effective July 1, 2002, the Schools of Allied Health Sciences and Nursing merged into the College of Nursing and Health Sciences.*

Note: Changes to course titles and credit hours are reflected in the course section of this addendum. Modifications to the proposed curriculums appearing in this section can be obtained from an advisor or through the on-line catalogue.

Pg-98 **Dental Hygiene.** *Insert the following language immediately after section heading:* The University of Vermont's Dental Hygiene program is in the process of transitioning from the UVM campus to Vermont Technical College (VTC). The last UVM Dental Hygiene class will begin Fall 2002 and must complete all degree requirements within the prescribed two years to be eligible to receive their degree from UVM at the end of the Spring 2004 semester.

Students interested in pursuing a career in dental hygiene beginning the Fall 2003 semester should contact Rosemary Distel at VTC, 802-728-1245 or rdistel@vtc.edu to discuss the program's transition status, entrance requirements and the application process.

Students who have previous college credit and wish to transfer into the UVM Dental Hygiene program for Fall 2002 must contact the UVM Admissions Office at 802-656-3370 or admissions@uvm.edu.

Modify original first paragraph to read: The Department of Dental Hygiene offers a two-year curriculum leading to an Associate in Science degree in Dental Hygiene.

Pg 99 Dental Hygiene *Change the last sentence to read.* A grade of C – or better is required for all professional courses.

Pg 99 Master of Physical Therapy (MPT). *Insert a third option under this program:* Guaranteed Option: For students who meet the criteria, we offer a guaranteed admissions option to the Master of Physical Therapy program. Through this option, entering first-year undergraduates are guaranteed a space in the MPT program at the end of three years at UVM.

The School of Business Administration Pgs 101 - 103

Pg 101 Introduction. *Correction:* SBA is accredited by AACSB International: The Association to Advance Collegiate Schools of Business.

Pg 101 Basic Business Core. *Change requirements:* from 24-27 credit hours to 24-26 credit hours.

Pg 102 GEN. ED. REQUIREMENTS —The Six Field Blocks. *Add to field #4:* African Studies. *Add to field #6:* Hebrew. *Change:* English to English Literature.

Pg 102 Basic Gen. Ed. Core. *Delete from the list of six core areas:* History 60, Geology 3, and Physics 5 and 6. *Add to the list of core areas:* Astronomy 5 and 23, Astronomy 5 and 24, Chemistry 33 and 35, Natural Resources 1.

Pg 102 Gen. Ed. Discipline Concentration. *Add the following sentence:* Community Development and Applied Economics, and Economics, may not be chosen as the discipline concentration.

Pg 103 COURSE OF STUDY —JUNIOR YEAR. *Change the number of credits for Fall as follows:* Business Field Courses, change from 12 to 9 credits; General Education or Electives, change from 3 to 6 credits.

The School of Natural Resources Pgs 104 – 107

Pg 105 GENERAL EDUCATION COURSES. *Modify items 4 & 5 under Five courses in required areas:* 4. Mathematics – Math 9 or higher (but not Math 17) *Varies depending on major choice. 5. Statistics – NR 140, Statistics 111, 141, or 211. *Varies depending on major choice.

Pg 105 Education Plan. *Delete section.*

COURSES OF INSTRUCTION AND FACULTY SECTION

ALANA STUDIES (ALAN) Pgs 109-110

Faculty changes: Coleman to Chairperson.
Faculty to add: Assistant Professors Bernard, Gennari.

269 **Cross-Cultural Psychology: A Clinical Perspective** (*New*) (Same as PSYC 269) Introduction to issues posed for psychologists in their work with ALANA (African, Latino/a, Native and Asian American) and international populations. Critical appraisal of readings, research and case studies. *Prerequisites:* PSYC 1, 109. Three Hours.

ANATOMY & NEUROBIOLOGY (ANPS; ANNB) Pg 110

Faculty changes: Jaworski and Vizzard from Assistant to Associate Professor.
Faculty to add: Professors Nishi, Eckenstein.

261 **Neurobiology** (Same as BIOL 261) (*New*) Focus on molecular and cellular aspects of the nervous system. Electrical signaling, synaptic transmission, signal transduction, neural development, plasticity and diseases. *Prerequisites:* BIOL 103 or ANPS 19 & 20. Three hours. Undergraduate/graduate credit.

ANIMAL SCIENCE (ASCI) Pgs 110-112

Faculty changes: Rogers from Assistant Professor to Adjunct Instructor, Greene from Assistant to Associate Professor
Faculty to add: Assistant Professors Hovey and Zhao

220 **Lactation Physiology** (*Was 220 Lactation and Milking*) Physiological mechanisms that control and affect lactation in domestic and laboratory animals with emphasis on dairy cattle. Includes mammary anatomy, development and health, and milk synthesis. *Prerequisites:* One chemistry course and one course in anatomy and physiology, or instructor's permission. Three hours. Undergraduate/graduate credit.

ANTHROPOLOGY (ANTH) Pgs 112-113

Faculty to delete: Woolfson.

AREA & INTERNATIONAL STUDIES (AIS) Pg 113

Faculty to add: Vivanco (Latin American Studies).

ART (ART) Pgs 114-116

Faculty changes: Owen from Associate Professor to Professor.
Faculty to add: Professor McIntyre, Associate Professor Thompson.

BIOCHEMISTRY (BIOC) Pgs 116-117

Faculty to delete: Chiu.
Faculty to add: Assistant Professor Hondal; Adjunct Assistant Professor Kelm.

205 **Chemistry of Biomolecules** (*New*) (Same as CHEM 205; MMG 205)

BIOLOGICAL SCIENCES (BSCI) Pg 117

Faculty changes: Johnson from Associate Professor to Professor and Director.

Faculty to add: Professor Vogelmann; Associate Professor Ward; Assistant Professors Harris and Lewis.

BIOLOGY (BIOL) Pgs 117-118

Faculty to delete: Conn, Schneider.

9 Science as a Way of Knowing (New) History of scientific method and its application to generation of knowledge. How science seeks to understand the origin and diversity of life. Lab research project. Three hours.

205 Advanced Genetics Laboratory *Credit hours changed to:* Two or four hours.

269 Plant-Animal Interactions (New) Ecological and evolutionary interactions among plants and animals. Topics include herbivory, pollination, seed predation, biocontrol, and effects of global climate change. *Prerequisites:* Biology 1, 2 or 11 12; Biology 102 recommended. Three hours.

BIOMEDICAL TECHNOLOGIES (BMT; BMED; MLS; NMT; RADT) Pgs 118-120

Faculty to delete: Gervais, Sullivan, White.

Faculty changes: Chair from Huot to Izzo as Interim Chair, Clinical Instructor Hills to Barber, Clinical Instructor McGovern to Deavitt.

Faculty to add: Associate Professor Emeritus Lachapelle.

BMT 242 Immunology *Prerequisites changed to:* One Semester of biochemistry. Three hours.

MLS 222 Advanced Clinical Chemistry *Prerequisites changed to:* One semester of biochemistry.

MLS 231 Pathophysiology of Blood Cells *Prerequisites changed to:* One semester of biochemistry.

MLS 255 Advanced Clinical Microbiology *Prerequisites changed to:* One Semester of biochemistry.

MLS 262 Advanced Immunohematology *Prerequisites changed to:* One Semester of biochemistry.

RADT 174 Clinical Practicum: Radiation Therapy *Prerequisites changed to:* RADT 173. *Credit hours changed to:* Two hours.

RADT 175 Medical Imaging (Was RADT 75 Medical Imaging Techniques)

BOTANY and AGRICULTURAL BIOCHEMISTRY (BOT) Pgs 120-122

Faculty to delete: Ullrich.

Faculty changes: Chairperson from Barrington to Vogelmann; Molofsky from Assistant to Associate Professor.

Faculty to add: Professor Vogelmann.

BUSINESS ADMINISTRATION (BSAD) Pgs 112-125

Faculty to delete: Brandenburg, Grinnell, Hunt, Phan, Ramagopal, Tashman.
Faculty changes: Vanden Bergh from Visiting Assistant Professor to Assistant Professor.
Faculty to add: Professor DeWitt, Assistant Professor Bonifield.

CHEMISTRY (CHEM) Pgs 125 – 127

Faculty to delete: Weltin.
Faculty changes: Landry from Assistant to Associate Professor.
Faculty to add: Assistant Professor Hughes.

205 Biochemistry I (*Was 204 Chemistry of Biomolecules*) *Cross-listings changed to: Same as BIOC 205; MMG 205 Prerequisites changed to: 142 or 144.*

206 Biochemistry II (Same as BIOC 206; MMG 206) (*New*) Continuation of Biochemistry I. Biochemistry of nucleic acids; nucleic acid based processes, such as replication and transcription; cellular information transfer, genomics, and proteomics. *Prerequisites: 205.* Three hours.

207 Biochemistry Lab (Same as BIOC 207; MMG 207) (*New*) Introduction to biochemical tools, including spectrometry, chromatography, and electrophoresis; natural and recombinant enzyme isolation; assays of DNA –modifying enzymes; computer-based structure/function exercises. *Corequisites: 205 or 206.* Two hours.

223 Mass Spectrometry (*New*) This course covers basic aspects of modern mass spectrometry instrumentation and techniques as well as specific applications relevant to the students in the course. *Prerequisites: 142 or 144 and 221 or instructor's permission.* Three hours. Undergraduate/graduate credit.

CHINESE (CHIN) Pg 127

295/296 Advanced Special Topics
(*New*) Advanced courses or seminars on topics beyond the scope of existing departmental offerings. See Schedule of Courses for specific titles. *Prerequisites: CHIN 202 or equivalent.* One to three hours.

CIVIL & ENVIRONMENTAL ENGINEERING (CE) Pgs 127-129

Faculty to delete: Cassell.

241 Traffic Operations & Design (*Was 141 Traffic Operations & Design*)
Advanced concepts of traffic engineering and capacity analysis; highway and intersection capacity; traffic analysis and simulation software; design and application of controls. *Prerequisites: CE 140.* Three hours. Undergraduate/graduate credit.

272 Structural Dynamics (Same as ME 272) (*Was 372 Matrix Methods in Structural Dynamics*) Vibrations, matrices, earthquake engineering, stability and wave propagation. *Prerequisites: Senior or graduate standing in Engineering or physical sciences, or instructor permission.* Three credit hours.

CLASSICS (CLAS) Pgs 129-131

Faculty to add: Visiting Assistant Professor B.T. Walsh; Adjunct Assistant Professor P. Smith.

COMMUNICATION SCIENCES (CMSI) Pgs 131-132

Faculty changes: Chairperson from Guitar to Prelock.

299 Autism Spectrum Disorders: Issues in Assessment & Intervention

(New) Assessment and intervention considerations in communication, social interaction and play, selection and use of evaluation tools, and implementation of intervention strategies for children with autism. Three hours. Undergraduate/graduate credit.

COMMUNITY DEVELOPMENT AND APPLIED ECONOMICS (CDAE) Pgs 132-134

Faculty to delete: Sullivan.

Faculty changes: Kolodinsky to Chairperson.

Faculty to add: Lecturers Baker, Becker; Assistant Professor Saez.

156 Law, Ethics, and Responsibility *Prerequisites changed to:* Sophomore standing.

166 Introduction to Agricultural and Resource Entrepreneurship (*Was 166 Small Business Management*) Introduction to the theory and practice of organizing and operating an agricultural or resource-based business. Emphasis on business development, operation, financing, marketing, and social responsibility. *Prerequisite:* Sophomore standing. Three hours.

167 Financial Management for Agricultural and Resource Entrepreneurs (*Was 167 Small Business Finance*) Financial management concepts for agricultural and resource-based businesses, with emphasis on interactions between business and personal financial decisions faced by entrepreneurs. *Prerequisites:* BSAD 65, CDAE 166 or permission. Three hours.

168 Marketing for Agricultural and Resource Entrepreneurs (*Was 168 Small Business Marketing*) Marketing concepts and methods and their applications in agricultural and resource businesses. Focus on development of marketing plan and its use in guiding business operations. *Prerequisites:* CDAE 61, 166. Three hours.

171 Community and International Economic Transformation (*Was 171 Agriculture in Economic Development*) Models of economic development, including constraints to economic transformation and policy approaches and strategies for promoting social welfare and sustainable development. *Prerequisites* 2, 61 or equivalent. Three hours.

218 Community Leadership, Organization, and Institutional Development (*Was 218 Community Organization and Development*) Role of civic engagement, leadership, and social and political institutions in a community development context. Special attention given to problems of formulation and implementation of alternative change strategies. *Prerequisites:* Jr. Standing, CDAE 102, or permission. Three hours.

237 Economics of Sustainability (Was 237 Economics of Sustainable Agriculture) Economic analysis that integrates natural resource and community planning for sustainable development at local, national and international levels. Examples include land use, sustainable agriculture and green business.

Prerequisites: 61 or equivalent, or permission. Three hours.

250 Applied Research Methods (Was 250 Research Methods for Applied Economists) Methods used in the collection and analysis of qualitative and quantitative data. Critical review of literature, and data collection, analysis, and interpretation for descriptive, inferential, and evaluation research. *Prerequisites:* Statistics 141 or permission. Four hours.

251 Contemporary Policy Issues in Community Development (Was 151 Housing, Consumers, and Society) In-depth study of contemporary community development policy issues such as affordable housing, land use and sprawl, alternative energy, environmental sustainability, effective community planning, social and environmentally responsible business. *Prerequisites:* CDAE 102 or permission. Three hours.

264 Risk Analysis and Forecasting Procedures (Was 264 Price Analysis and Forecasting) Analytical concepts and skills and their applications in risk analysis related to agricultural and resource markets focusing on decision making processes. *Prerequisites:* STAT 141, CDAE 61, MATH 19, or instructor's permission. Three hours. Undergraduate/graduate credit.

266 Decision Making for Agricultural and Resource Entrepreneurs (Was 266 Small Business Decision Making) Quantitative decision-making methods and applications in agricultural and resource businesses. Major topics include linear programming, risk and uncertainty, inventory decisions, and e-commerce. *Prerequisites:* CDAE 166, Math 19, and AGRI 85 or CS 2. Three hours. Undergraduate/graduate credit.

267 Strategic Planning for Agricultural and Resource Entrepreneurs (Was 267 Small Business Planning) Applications of marketing, finance, and management strategies. Drafting a simulated business plan for rural entrepreneurs and economic development. *Prerequisites:* ARE majors or minors, or with instructor's permission; senior standing. Four hours. Undergraduate/graduate credit.

272 International Economic Development (Was 272 Seminar on World Food Problems and Policies) International trade, finance, investment and development theories and policies for community development. *Prerequisites:* Jr. standing, CDAE 102 or instructor's permission. Three hours. Undergraduate/graduate credit.

273 Project Planning and Development (Was 273 Agriculture Planning and Project Development) National, community and private sector project development. Focus on planning methods and policy instruments, sectoral linkages, and contributions to the economy as a whole. *Prerequisite:* 171 or instructor's permission. Three hours. Undergraduate/graduate credit.

COMPUTER SCIENCE (CS) Pgs 134-135

Faculty to delete: Colburn, Xue.

Faculty changes: Chairperson from Colburn to Wu, Eppstein from Research Assistant Professor to Assistant Professor.
Faculty to add: Assistant Professor Ling; Research Assistant Professor Zhang; Research Professor Yu, Lecturer Pechenick.

48 Introduction to Web Development (*New*) Provides strong foundations in HTML, working with images, beginning Java Script programming, and web design so that the student can create a functional web site. *Prerequisites:* Basic familiarity with computer use. Three hours.

148 World Wide Web *Prerequisites changed to:* One semester of computer programming, and CS 48 (or equivalent knowledge of Java Script and HTML).

204 Database Systems *Prerequisites changed to:* 101, 104, 201 recommended.

231 Bioinformatics (Same as MMG 231) (*New*)

294 Independent Readings and Research *Credit Hours changed to:* Variable, one to six.

295 Special Topics in Computer Science *Description changed to:* Subject will vary from year to year. May be repeated for credit. Variable, one to six.

DENTAL HYGIENE (DHYG) Pgs 135-136

Faculty to delete: Averill, Bowen, Derick, H. C. Hill, S. Hill; Levi, MacDonald, Rowell, Tessier, Zablotsky.

Faculty changes: Chair from Hills to Grimes, Lecturer Keyworth to Hills, Grimes from Lecturer to Clinical Associate Professor.

ECONOMICS (EC) Pgs 136-137

Faculty to delete: Alnaswari.

Faculty to add: Assistant Professor Sicotte, Lecturer Saunders.

170 Economic Methods (*Description modified*) Introduces statistical and mathematical methods for understanding economic literature including probability distributions, data sources, statistical concepts, and simple regression, taught using economic examples and applications. *Prerequisites:* Math 19. Credit not given for both EC170 and any of the following STAT courses: 111, 140, 141, 143. Three hours.

EDUCATION (ED) Pgs 137-143

Faculty to delete: Alnasrawi, Alosa, Burford, Capone, Cass, Comerford, Dewees, Erb, Fox, Glesne, Heise, Hock, Holland, Kelly, Manning, Morgan, Moroz, Paolucci-Whitcomb, Patterson, Pugh, Richards, K. Roche, Roche, Rubin, Solomon, Sugarman, Wessinger, Widrick, Witkin.

Faculty changes: Aiken, Geroski and Connolly from Assistant to Associate Professor; Bishop and Furney from Lecturer to Assistant Professor; Wang from Visiting Assistant Professor to Research Assistant Professor; Giangreco from Research Associate Professor to Research Professor.

Faculty to add: Assistant Professors Gajda, Harman, Keogh, Killeen, Neumann, Smith, Turner; Research Assistant Professor Clark; Research Associate Wood; Lecturers Burrington, Busier, Hodgdon, MacLeod, Sortino, Thompson.

EDEL 11 Computers in El Ed Classroom *Credit hours changed to:* Three hours.

EDML 170 Middle School Organization and Pedagogy (*Was 170 Pedagogy, Curriculum and Assessment*)

EDFC 123, 220, 221, 222, 224, and 225 (*Previously NFS 123, 220, 221, 222, 224, and 225*)

EDPE 21 Foundations of Physical Education Examination of the development of physical education as an academic discipline and profession, its foundations, current trends, issues and career opportunities. *Prerequisites:* Physical Education majors; others by instructor's permission. Three hours.

EDPE 23 American Red Cross Emergency Response (*Was 23 Advanced First Aid and Emergency Care*)

EDPE 100 Integrating Movement across the Elementary School Curriculum (*Was 100 Teaching Physical Education in the Elementary School*) Planning and implementing movement-based lessons and integrating movement across the curriculum for children aged 5-12. Two hours.

EDPE 121 Coaching Baseball (*Was 123 Coaching Baseball/Softball*) Theory and technique of coaching interscholastic baseball. Includes practice, game, and schedule organizations. *Prerequisites:* Skill competency in baseball, sophomore standing or permission. Two hours.

EDPE 123 Coaching Softball (*Was 123 Coaching Baseball/Softball*) Theory and technique of coaching interscholastic softball. Includes practice, game, and schedule organizations. *Prerequisites:* Skill competency in softball, sophomore standing or permission. Two hours.

EDPE 135 Aquatics (*Was 135 Adaptive Aquatics*) Planning and implementing aquatic programs for individuals with disabling conditions. Emphasizes the modification of instructional techniques to effectively teach individuals with varied abilities in an aquatic setting. *Prerequisites:* EDPE 26 or instructor's permission. Two hours.

EDPE 167 Exercise Physiology *Description modified:* Investigates physiological responses during exercise. Laboratory, classroom experiences enable understanding of bodily responses during exercise. Content includes energy metabolism, muscular, cardiovascular, pulmonary responses, and temperature regulation. *Prerequisite:* PE majors, coaching minors, sports nutrition, Athletic Training; others by instructor's permission. Three hours.

EDPE 168 Measurement & Data Analysis in Exercise and Sport Science (*Was 168 Tests and Measurements in Exercise and Sport Science*) Introductory statistics and research design class. Covers basic statistics—t-tests, measurement scales, Anova,

correlations, etc. Application in physical education and exercise science are specifically discussed. *Prerequisites:* EXSS majors only, others by instructor's permission. Three hours.

EDPE 182 Student Teacher Seminar (*New*) Provides students opportunities to discuss, process, give and receive input and to receive materials to support and enhance their experience, and develop licensure portfolio. *Prerequisites:* Concurrent with EDPE 181. Two hours.

EDSS 11 Race & Culture (*Was* AG 95 and AH 95)

EDSS 12 Race & Culture Contemporary Issues (*Was* AG 96 and AH 96) Race and Culture Contemporary Issues course gives an expanded introduction to US social justice issues. Forms of discrimination that shape US culture explored and skills in self-reflection and critical analysis developed.

EDSC 11 Educational Technology in the Secondary Education Classroom (*New*) Students are introduced to a variety of uses for information technology in education with particular applications to stimulate and manage a student-centered classroom. Three hours.

EDSC 240 Teaching English in Secondary School (*New*) Approaches to teaching composition, literature, and the English language in secondary school. Three hours. Undergraduate/graduate credit

ELECTRICAL ENGINEERING (EE) Pgs 144-146

Faculty changes: Varhue from Associate to Professor, Absher to Interim Chairperson.

ENGLISH (ENG) Pgs 146-149

Faculty to delete: Fulwiler, King, Manchel, Orth, Won.

Faculty changes: Schnell from Assistant to Associate Professor.

Faculty to add: Assistant Professors Jackson, McGowan, Mulrooney, Rohy.

ENVIRONMENTAL SCIENCES (ENSC) Pgs 149-150

Faculty to delete: Bramley, DeHayes.

Faculty to add: Lewis (Microbiology and Molecular Genetics).

299 Environmental Sciences Honors (*New*) Honors project dealing with environmental sciences. *Prerequisites:* By application only, see program chair. Three to six credit hours.

ENVIRONMENTAL STUDIES (ENVS) Pgs 150-151

Faculty to delete: Petrie, Seidl; Lecturer Anderson.

Faculty to add: Assistant Professors Ali & Saez.

152 Environmental Information Skills (*New*) This course focuses on the complexities of conducting environmental research in a networked information age by teaching information concepts, skills, and broad ranging resources. *Prerequisites:* ENVS 151, or concurrently enrolled in ENVS 151 One hour.

173 Landscape Natural History (New) This field-based course examines patterns and processes on local landscapes from an interdisciplinary perspective, with an emphasis on geology, soil science, plant ecology, and ecosystem geography. *Prerequisites:* ENVS 1, sophomore standing. Three hours.

174 Natural Areas Conservation and Stewardship (New) Examines land protection and stewardship efforts of conservation organizations and public agencies. Builds on principles of conservation biology to understand issues in conserving and managing natural areas. *Prerequisites:* ENVS 1 or NR 1 or permission. Three hours.

181 Strategic Environmental Leadership (Delete)

182 Religion and Ecology (New) Exploration of the greening of major world religious traditions in both practice and philosophy. Includes institutional, activist, and lifestyle initiatives in ecological spirituality. *Prerequisites:* ENVS 1 or 2, or NR 2, REL 20 or 21 preferred, sophomore standing. Three hours.

284 Teaching Assistantship (Was 194 About the Environment) Students gain practical teaching experience through assisting with instruction, evaluation, and reflection. Tasks may include: leading discussion sessions, grading, and developing course materials. *Prerequisites:* Senior standing or permission of instructor, concurrent teaching assistant in ENVS course. Variable credit, one to two hours. May be repeated.

285 Mind in Nature (Delete)

FORESTRY (FOR) Pgs 151-152

Faculty to delete: Bousquet.

Faculty to add: Assistant Professors Danks, Keeton; Research Associate Professor Livingston.

FRENCH (FREN) Pgs 152-154

Faculty to delete: Assistant Professor Whitebook; Professor Carrard.

Faculty to add: Assistant Professor Emery; Lecturers Borra and LaLiberte.

101 Writing Workshop (Was 103 Writing Workshop)

104 Contemporary France (Was 104 Reading French Culture) Study of selected aspects of France today. Improvement of language skills; emphasis on reading, writing, and analysis of a variety of materials (literature, journalism, images). *Pre- or Co-requisite:* 101. Three hours.

105 French Culture (Was 191 French Culture) Study of the fundamentals of French culture from historical and structural perspectives, including a review of socio-political institutions. *Pre- or Co-requisite:* 101. Three hours.

107 Focus on Oral Expression (Was 102 Focus on Oral Expression)

111 French Literature in Context *Prerequisites changed to:* 101, senior French majors with permission only.

112 French Literature in Context II *Prerequisites changed to:* 101 Senior French majors with permission only.

201 Advanced Composition and Conversation *Prerequisites changed to:* 101.

209 Advanced Grammar *Prerequisites changed to:* 101.

211 History of the French Language *Prerequisites changed to:* 101.

215 Methods of Text Analysis *Prerequisites changed to:* 101.

216 Stylistics *Prerequisites changed to:* 101.

292 Topics in French Culture *Prerequisites changed to:* 104 or 105 or permission.

GEOGRAPHY (GEOG) Pgs 154-155

Faculty changes: Chairperson from Seager to Hannah; Elder from Assistant to Associate Professor.

145 Geography of Water (Same as NR 102) (*New*) Examination of the spatial dimensions of water distribution from local to global scales, and the social, political, and economic dimensions of its use. Three hours.

146 Watershed Ecosystems of North America (*Was Physical Geography of North America*) Examines the influence of climate, geomorphic processes, and biogeography on ecosystems at the scale of the watershed. Explores the role of social dynamics in the management and restoration of watersheds. Three hours.

281 Advanced Topics in GIS and Remote Sensing (*New*) Advanced offerings in GIS or remote sensing focusing on landscape interpretation for decision-making practices. Incorporation of applications from Vermont public and private sectors. *Prerequisites:* Senior or Graduate standing with 9 hours in Geography; or instructor's permission. Three hours.

GEOLOGY (GEOL) Pgs 155-157

Faculty changes: Bierman from Associate Professor to Professor.

4 Dynamic Earth (*New*) Plate Tectonics and paleoclimate are the foci in this activity-based lecture/lab introductory earth science course. *Prerequisites:* First and second year students only. Four hours.

7 Earth Hazards (*New*) Understand geological and societal causes of death and destruction by earthquakes, landslides, floods, volcanoes, storms, and avalanches around the world. Three hours.

53 Planetary Geology (Same as ASTR 53) (*New*) Characterizes the differences and similarities between the Terrestrial and Jovian Planets, the dynamic processes that shape our home planet and compares the geologic processes active in our Solar System. *Prerequisites:* Introductory science course or ASTR 5. Three hours.

62 Earth Environments and Life through Time (New) This course presents an overview of how the Earth has changed over time and how this has influenced the history of life. *Prerequisites:* GEOL 1,3,4,5, or 55. Four hours.

101 Field Geology *Prerequisites changed to:* 1, 5, 55 or instructor's permission.

116 Glacial Geology (New) Examines the Dynamics of glacier flow and landforms glaciers produce. Lectures, labs, and field trips emphasis processes in both modern and ancient glaciers. *Prerequisites:* GEOL 1, 5, 7, or 55. Three hours.

261 Geodynamics (New) Examines physical evolution of the Earth on regional to global scale. Project oriented, focusing on analysis and interpretation of geologic and geophysical data. *Prerequisites:* GEOL 101 and 102 or permission. Four hours.

HISTORIC PRESERVATION (HP) Pg 158

Faculty to add: Lecturer McCullough.

HISTORY (HST) Pgs 158-161

Faculty to delete: McIsaac.

45 History of Islam and the Middle East to 1258 (Was 45 Intro. to Middle East History) Introduction to the major institutions evolved in the Middle East from the advent of Islam to the Mongol conquest of Baghdad in 1258. Three hours.

46 History of Islam and the Middle East Since 1258 (New) Introduction to the major institutions evolved in the Islamic Middle East since the Mongol conquest of Baghdad in 1258 to the present. Three hours.

HUMAN DEVELOPMENT and FAMILY STUDIES (HDFS) Pg 162

Faculty to delete: Barbour, Weinstock

Faculty changes: D. Goldhaber and Shelton should be listed as Associate Professors.

Faculty to add: Assistant Professor Smith.

ITALIAN (ITAL) Pg 163

Faculty changes: Borra should be listed as Assistant Professor.

121 Issues in Italian Culture (Was 121 Italian Civilization and Culture) An introduction to the cultural realities of Italy, from politics to pop music, food to fashion. Emphasis on improving linguistic fluency. *Prerequisites:* 52 or equivalent. Three hours.

122 Italian Literature and Film (Was 122 Italian Civilization and Culture) A study of the multiple relationships between literary and cinematic texts and their role as a window on Italian culture. Emphasis on improving linguistic fluency. *Prerequisites:* 52 or equivalent. Three hours.

157 Modern Italian Fictions (Was 157 Contemporary Masterworks) An introduction to Italian literature from the 18th century to today, with attention to art, music, cinema, and the Internet. Emphasis on improving linguistic fluency. *Prerequisites:* 52 or equivalent. Three hours.

158 Early Italian Literature in Context (*Was 158 Medieval Masterworks*) An introduction to Italian literature from its beginnings through the early-modern period. Authors may include Dante, Boccaccio, Macchiavelli. Emphasis on improving linguistic fluency. *Prerequisites:* 52 or equivalent. Three hours.

170 Cultures of Women in Italy (*New*) A study of Italian women writers, journalists, artists, and film directors. Emphasis on reading and discussion. *Prerequisites:* 52 or equivalent. Three hours.

JAPANESE (JAPN) Pg 163

121 Japanese Conversation I (*New*) Development of speaking and listening skills related to concrete topics through total immersion in Japanese. *Prerequisites:* 52 or equivalent. One to three hours.

122 Japanese Conversation II (*New*) Development of functional skills to carry out daily conversation in varied social contexts. *Prerequisites:* 52 or equivalent. One to three hours.

221 Japanese for Communication I (*New*) Training in skills to communicate on concrete and abstract topics. Repeatable with different content. *Prerequisites:* 102 or equivalent. Variable credit hours.

222 Japanese for Communication II (*New*) Development of skills to present information and view points in varied social contexts. Repeatable with different content. *Prerequisites:* 102 or equivalent. Variable credit hours.

MATHEMATICS (MATH) Pgs 164-166

52 Fundamentals of Mathematics *Prerequisites changed to:* None.

124 Linear Algebra *Prerequisites changed to:* 22 or instructor's permission. *Co-requisites changed to:* MATH 121 recommended but not required.

MECHANICAL ENGINEERING (ME) Pgs 166-168

Faculty to delete: Chesler.

Faculty changes: Keller from Associate to Professor; Iatridis should be listed as Iatridis.

Faculty to add: Associate Professor Campo, Visiting Assistant Professor Davila.

164 Manufacturing Design Project (*Delete*)

183 Mechanical Engineering Laboratory IV (2, 1) Advanced engineering experimentation, data collection and reduction techniques applied to areas of mechanical engineering; projects involving "design for manufacturing" of a specified product. *Prerequisites:* Senior standing in Mechanical Engineering. Three hours.

185, 186 Senior Project *Credit Hours changed to:* Fall: one hour. Spring: two hours.

249 Computational Fluids Engineering (New) Computational methods for solving the Navier-Stokes equations and combined thermo-fluid flows; finite-differences and finite-volume techniques; use of standard commercial CFD software. Prerequisites: 143 or equivalent. Three hours. Undergraduate/graduate credit.

270 Structural Dynamics (Same as CE 272)

MICROBIOLOGY AND MOLECULAR GENETICS (MMG) Pg 168

Faculty to delete: Froeliger, Melamede, Meyer.

Faculty changes: Johnson from Associate Professor to Professor; Ward from Assistant to Associate Professor.

205 Chemistry of Biomolecules (Same as BIOC 205; CHEM 205) (New)

231 Bioinformatics (Same as CS 231) (New) Introduction to current topics in bioinformatics. Applications may include sequence alignment, dynamic programming, hidden Markov models, phylogenetics trees, microarray data analysis, genomics, and proteomics. *Prerequisites:* Instructor's permission; STAT 151, CS 26, and MMG 102 desirable. Three hours. Undergraduate/graduate credit.

MOLECULAR PHYSIOLOGY and BIOPHYSICS (MPBP) Pg 169

Faculty to delete: Poehlman, Mulieri.

Faculty changes: Trybus from Associate Professor to Professor; Rould from Assistant Professor to Research Assistant Professor.

Faculty to add: Assistant Professors Ruiz, VanBuren; Associate Professors Bentil, Raderemacher, Vigoreaux; Professor Alpert; Research Assistant Professor Toth.

MUSIC (MUS) Pgs 170-172

Faculty to delete: Affiliate Artists McGraw, Vogelzang.

Faculty to add: Assistant Professor Julien.

NATURAL RESOURCES (NR) Pgs 172-173

Faculty changes: Ginger from Assistant to Associate Professor.

Faculty to add: Professors Bowden, Costanza.

99 Aiken Scholars Seminar (New) Seminar discussions on current environment issues. Guest speakers and field trips. *Prerequisites:* Open only to first-year Aiken Scholars. One hour.

199 Honors Seminar (New) A discussion and readings seminar that features guest speakers, and is part of the SNR Spring Seminar Series. Focus of the seminars change annually. Can be repeated. *Prerequisites:* Sophomore standing; open only to SNR Honors Students. One hour.

250 Limnology *Description and prerequisites changed to:* Ecology of lakes and reservoirs, including their origin, physics, chemistry and biology, and the effects of anthropogenic perturbations. Field and laboratory experience. *Prerequisites:* One year biology, one year chemistry, and ecology course. Four hours.

251 Limnology Laboratory (Delete)

280 Stream Ecology *Description and prerequisite changed to:* Ecology of streams including hydrodynamics, morphology, sediment transport, chemistry, biology and human impacts. Field and laboratory experience. *Prerequisites:* One year biology, one year chemistry, an ecology course. Four hours. Undergraduate/graduate credit.

298 Honors 'Project' Planning (New) Discussions leading to the development of an individual or group Senior Honors Project Proposal. *Prerequisites:* Junior standing; open only to SNR Honors Students. One hour.

NURSING (NURS; PRNU) Pgs 173-175

Faculty to delete: Botter, Clements, Conner, Gagne, Wheeler.

Faculty changes: Buck-Rolland and Whitney from Lecturer to Clinical Assistant Professor; Birnn from Lecturer to Clinical Assistant Professor; Morris and Sowan from Assistant to Associate Professor.

Faculty to add: Visiting Assistant Professor Beatson.

NURS 138 Critical Care Nursing (Was 196 Critical Care Nursing)

NURS 195/196 Special Topics *Credit hours changed to:* One to six hours.

PRNU 113 Assessment of Health of Individuals & Families within Communities *Credit hours changed to:* Four hours.

PRNU 129 Family Centered Care for Childbearing Women and Newborns (Was 129 Caring for Childbearing Women) This course focuses on the human experiences of childbearing. Students will have opportunities to care for childbearing women, neonates and their families in a variety of settings. *Prerequisite:* PRNU 113. *Pre/corequisites:* PRNU 128, PATH 101. Three hours.

PRNU 231 Experiences in Alterations in Health II This course focuses on individual and family responses to alterations in health. A holistic and lifespan approach will be used in examining the nursing care of these clients. *Prerequisites:* PRNU 132, 134. Two hours.

PRNU 242 Caring for Clients and Populations at Risk *Credit hours changed to:* Five hours.

NUTRITION and FOOD SCIENCES (NFS) Pgs 175-176

Faculty to delete: Chamberlain, Poehlman, Polzella.

Faculty changes: Slik should be listed as Silk.

PATHOLOGY (PATH) Pgs 176-177

Faculty to delete: Craighead, Koh, Li, Timblin, Tuthill, Zhang.

Faculty changes: Huber from Associate Professor to Professor.

Faculty to add: Research Assistant Professors Evans, Scott; Assistant Professors Sharp, Bosenberg; Research Assistant Professor Shukla, Professor Leiman, Associate Professors Kida, van der Vliet.

PHARMACOLOGY (PHRM) Pg 177

Faculty to delete: Tritton.

Faculty to add: Research Assistant Professors Eckman, Petkov, Honda.

PHILOSOPHY (PHIL) Pgs 177-179

Faculty to delete: Hall.

Faculty to add: Assistant Professor Moyer.

PHYSICS (PHYS) Pg 179

Faculty to add: Assistant Professor Headrick

PLANT and SOIL SCIENCE (PSS) Pgs 179-181

Faculty changes: Skinner from Research Assistant Professor to Research Associate Professor.

Faculty to add: Lecturer Hazelrigg.

POLITICAL SCIENCE (POLS) Pgs 181-183

Faculty to delete: Ball, Smith.

Faculty changes: Bryan, Kaufman and Taylor from Associate Professor to Professor.

Faculty to add: Assistant Professor Holmes.

PSYCHOLOGY (PSYC) Pgs 183-185

Faculty to delete: Compas, Howell.

Faculty changes: Chairperson from Howell to Lawson.

Faculty to add: Assistant Professor Bouchey.

254 Primary Prevention and Mental Health Promotion (*Was 254 Primary Prevention*)

269 Cross-Cultural Psychology: A Clinical Perspective (Same as ALANA 269) (*New*) Introduction to issues posed for psychologists in their work with ALANA (African, Latino/a, Native and Asian American) and international populations. Critical appraisal of readings, research and case studies. *Prerequisites:* PSYC 1, 109. Three hours.

PUBLIC ADMINISTRATION (PA) Pg 185

Faculty to delete: Candler, Brandenburg, Twardy; Lawson as Director.

RECREATION MANAGEMENT (RM) Pgs 185-186

Faculty to delete: More.

RELIGION (REL) Pgs 186-187

Faculty changes: Sugarman from Associate Professor to Professor.

180 Moral and Religious Perspectives on the Holocaust (*New*) A study of the Holocaust in relation to questions of moral responsibility, justice, guilt, and human suffering, focusing on Jewish responses. *Prerequisites:* 3 hours in REL or HIST 190 or permission of instructor. Three hours.

RUSSIAN (RUSS)

Faculty to add: Lecturer Nazarova.

SOCIAL WORK (SWSS) Pgs 188-189

Faculty to delete: Stone.

Faculty changes: Dewees from Assistant to Associate Professor.

7 Quantitative Methods in Social Work Research (New) Introduction to statistics and social work research methods. This course introduces students to quantitative methodology in research and practice. Three hours.

228 Aging: A Strengths & Human Rights Perspective (New) An examination of aging for social work policy and practice from the perspectives of strengths, social justice, human rights and critical social constructionism. Three hours. Undergraduate/graduate credit.

296 Social Work in a Global Context (New) Study of social work issues in different parts of the world. Located at the University of Lapland in Finland. *Prerequisites:* Background in human services or social work major or MSW standing and permission of instructor. Three hours. Undergraduate/graduate credit.

SOCIOLOGY (SOC) Pgs 189-192

Faculty to delete: Professor Berkowitz.

101 Development of Sociological Theory *Description changed to:* Classical sociological theory including Marx, Weber, Durkheim, and Mead, as well as Du Bois and early female theorists such as Martineau. Reading and writing intensive. *Prerequisites:* Six hours of sociology or equivalent preparation in another social science with instructor's permission. Three hours

252 Sociology of Emotions (New) Studies the theoretical premises of a sociocultural explanation of emotions; examines specific emotions such as respect, shame, hatred, love and compassion in humans; and explores the existence of emotions in non-human animals. *Prerequisites:* 3 hours of SOC. Three hours.

SPANISH (SPAN) Pgs 192-193

Faculty to delete: Rodriguez Mangual, Wesseling.

Faculty changes: Byerley should be listed as Byerly; Roof-Nunley should be listed as Nunley.

Faculty to add: Assistant Professor Waldron.

101 Composition and Conversation *Prerequisites changed to:* 52 or permission

109 Spanish Grammar *Prerequisites changed to:* 52 or permission

201 Advanced Composition and Conversation *Prerequisites changed to:* 101 or permission

202 Topics in Spanish Language Study *Prerequisites changed to:* 101 or permission. *Add:* (Not offered for graduate credit).

281 Contemporary Spanish-American Fiction (Was 281 Spanish-American Prose Fiction of the 20th-Century) *Prerequisites changed to:* 140

STATISTICS (STAT) Pgs 193-195

Faculty to delete: Howell.

Faculty to add: Professor Bouchey, Research Assistant Professor Single.

THEATRE (THE; SPCH) Pgs 195-196

Faculty to delete: Massey.

Faculty changes: Schenk and Thaler from Associate Professor to Professor;
Chairperson from Thaler to Modereger.

VERMONT STUDIES (VS) Pg 196

Faculty to delete: Barnum.

284 Seminar in Vermont History (Same as HIST 284) (New) Topical approach to Vermont history through original research utilizing primary sources available at UVM, the Vermont Historical Society, and the Vermont State Archives. *Prerequisites:* Junior or senior standing, 12 hours of history, including 184 or permission. Three hours.

WILDLIFE AND FISHERIES BIOLOGY (WFB) Pg 197

Faculty changes: Capen from Professor to Research Professor.

271 Wetlands Wildlife (New) Breeding biology, behavior, habitat management, and population ecology of wetland wildlife with emphasis on waterfowl. *Prerequisites:* WFB 174, NR 103. Two hours. Undergraduate/graduate credit

272 Wetlands Wildlife Laboratory (Was 197 Wetlands Ecology and Management Laboratory) Laboratory and field assessment of the ecology and management of wetland habitats and their associated wildlife populations. *Prerequisites:* Previous or concurrent enrollment in WFB 271 or NR 260. One hour. Undergraduate/graduate credit.

WOMEN'S STUDIES (WST) Pgs 197-198

Faculty changes: Schreckeberger should be listed as Schreckenberger, Seguinto from Assistant to Associate Professor.

Faculty to delete: Professors J. Ambrose, C. Elliott, Assistant Professor Won.

185 Women in the U.S. Economy *Modify as follows: (See ECON 156) Prerequisites:* EC 11, 12 or instructor's permission. Three hours.

TRUSTEES

Daniel M. Fogel, B.A., M.F.A., Ph.D., President, *ex officio*
Howard Dean, B.A., M.D., Governor, *ex officio*

Term Ending March 2003

Martha P. Heath, B.S.	<i>Westford, Vermont</i>
Carolyn S. Kehler, B.A., M.A.	<i>Woodstock, Vermont</i>
Doran Metzger, B.A.	<i>Milton, Vermont</i>
Sanjeev Yadav	<i>Shelburne, Vermont</i>
Robert Young	<i>Rutland, Vermont</i>

Term Ending March 2004

Milton E. Goggans, B.S.	<i>Skillman, New Jersey</i>
Dean Maglaris, B.A., M.B.A.	<i>New Canaan, Connecticut</i>
Pamela G. McDermott, B.S., M.P.A.	<i>Milton, Massachusetts</i>

Term Ending March 2005

Frank J. Cioffi, B.A.	<i>St. Albans, Vermont</i>
Margaret P. Hummel, B.A., M.A.	<i>Underhill, Vermont</i>
Alysia D. Krasnow, B.A.	<i>Pepperell, Massachusetts</i>
Malcolm F. Severance, B.S., Ph.D.	<i>Colchester, Vermont</i>
David S. Wolk, B.A., M.Ed.	<i>Mendon, Vermont</i>

Term Ending March 2006

Bruce Lisman, B.A.	<i>New York, New York</i>
James Pizzagalli, B.S., J.D.	<i>Shelburne, Vermont</i>
Helen B. Spaulding	<i>Boston, Massachusetts</i>

Term Ending March 2007

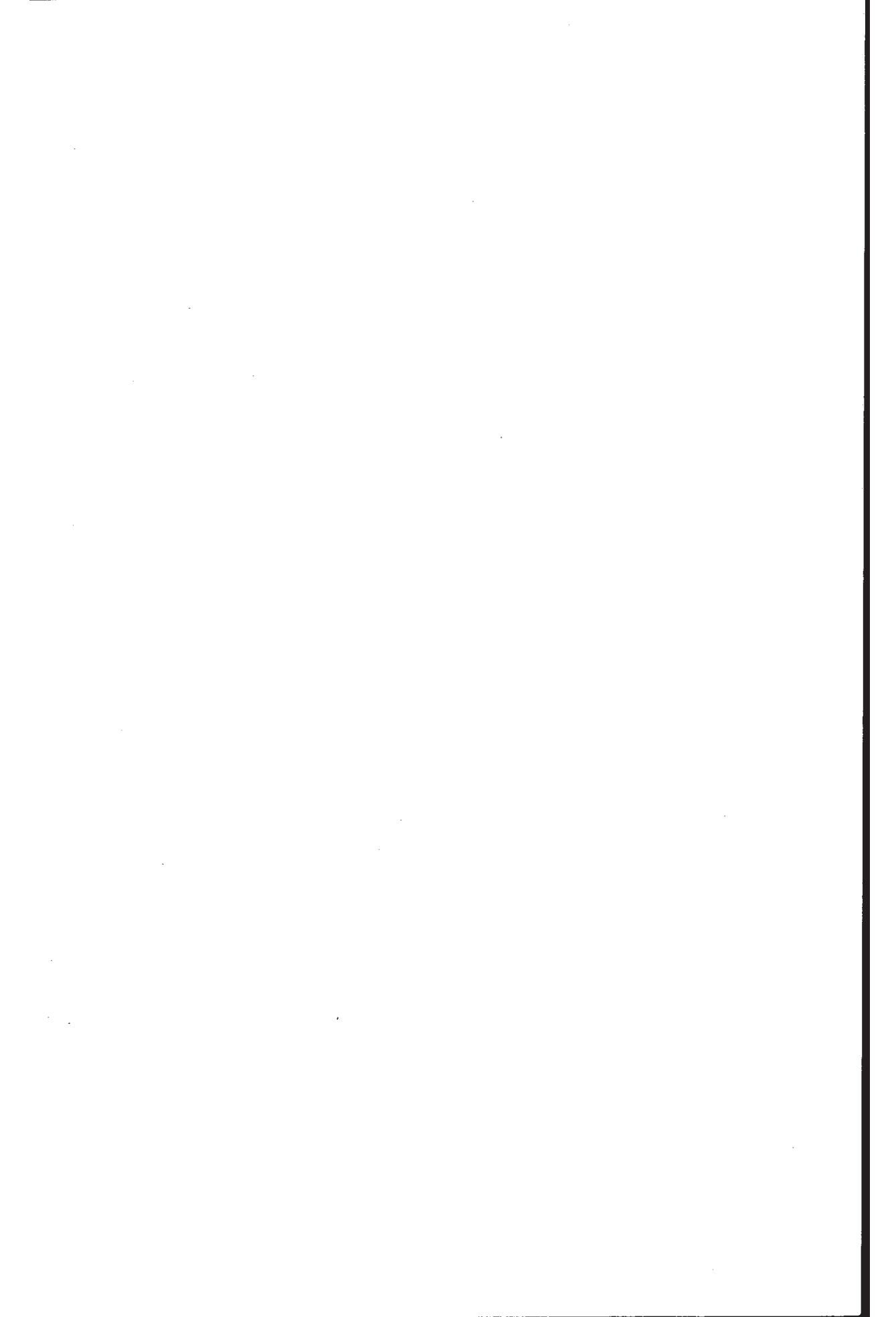
Kathleen C. Hoyt, B.A.	<i>Norwich, Vermont</i>
Richard W. Hube, B.A.	<i>South Londonderry, Vermont</i>
Thomas A. Little, A.B., J.D.	<i>Shelburne, Vermont</i>
Mark S. Young	<i>Orwell, Vermont</i>

Term Ending March 2008

Robert F. Cioffi, B.A., M.B.A.	<i>Rowayton, Connecticut</i>
Carl H. Lisman, A.B., J.D.	<i>Charlotte, Vermont</i>
Raymond C. Pecor, A.B.A.	<i>Sheburne, Vermont</i>

ADMINISTRATION

Fogel, Daniel M., Ph.D. (2002)	<i>President</i>
Bramley, A. John, Ph.D. (1990)	<i>Interim Provost</i>
Gustafson, Thomas J., Ed.D. (1978)	<i>Vice President for University Relations and Operations</i>
deGroot, Ian W., B.S. (1984)	<i>Interim Vice President for University Development and Alumni Relations</i>
Nestor, David A., Ed.D. (1994)	<i>Interim Vice President for Student Affairs</i>
Burke, John M., Ph.D. (1984)	<i>Vice Provost for Research</i>
E. Lauck Parke, Ph.D. (1977)	<i>Vice Provost for Undergraduate Education</i>
Bazluke, Francine T., J.D. (1985)	<i>General Counsel</i>
DeHayes, Donald H., Ph.D. (1977)	<i>Dean, School of Natural Resources</i>
DeWitt Rocki-Lee, Ph.D. (2002)	<i>Dean, School of Business Administration</i>
Forcier, Lawrence K., Ph.D. (1977)	<i>Dean, Extension System</i>
Huot, Anne E., Ph.D. (1994)	<i>Interim Dean, Graduate College</i>
Jenkins, Robert G., Ph.D. (1999)	<i>Dean, College of Engineering and Mathematics</i>
Johnson, Rachel N., Ph.D. (1991)	<i>Acting Dean, College of Agriculture and Life Sciences</i>
Rambur, Betty, DNS (2000)	<i>Dean, College of Nursing and Health Sciences</i>
Saule, Mara R., M.L.S. (1985)	<i>Interim Dean, Libraries & Information Technologies</i>
Smith, Joan M., Ph.D. (1990)	<i>Dean, College of Arts and Sciences</i>
Tarule, Jill M., Ed.D. (1992)	<i>Dean, College of Education and Social Services</i>
TBA	<i>Dean of Continuing Education</i>
Warshaw, Joseph B., M.D. (2000)	<i>Dean, College of Medicine</i>



University of Vermont
Office of the Provost
348 Waterman Building
85 South Prospect St.
Burlington, Vermont 05401
(802) 656-4400