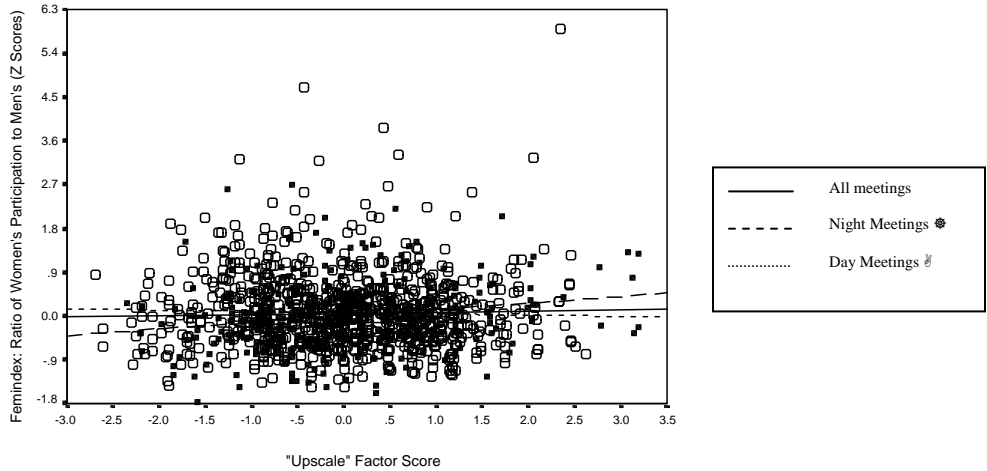


# FIGURE X-O

## Community Life Factors and Women's Participation

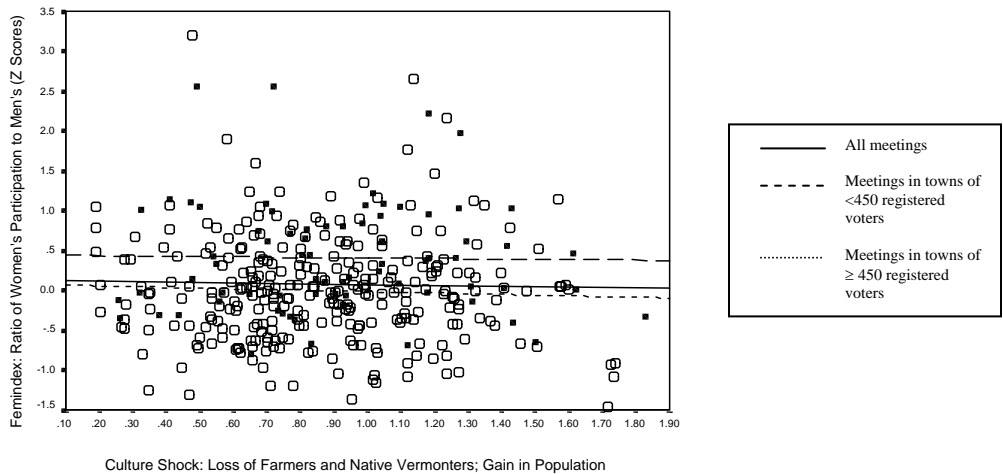
### Plot 1 Women's Participation by "Upscale" Factor Score

1185 Town Meetings 1977 - 1998



### Plot 2 Women's Participation by Community Culture Shock

359 Town Meetings 1987 - 1992



### Plot 3 Women's Participation by the Sanders' Factor Score

1376 Town Meetings 1970 - 1998

