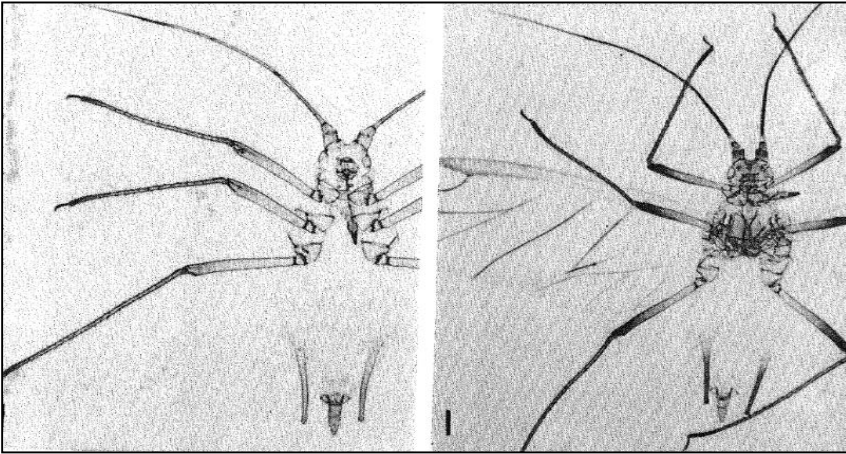
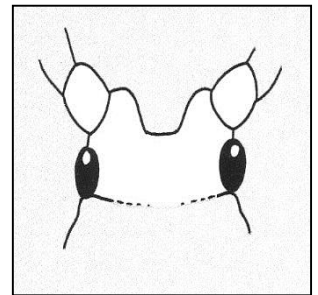


APHID ID

Potato Aphid (*Macrosiphum euphorbiae*)

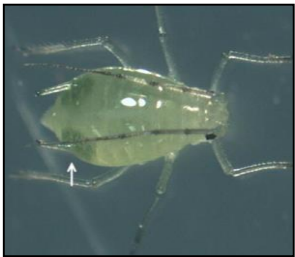


Head shape

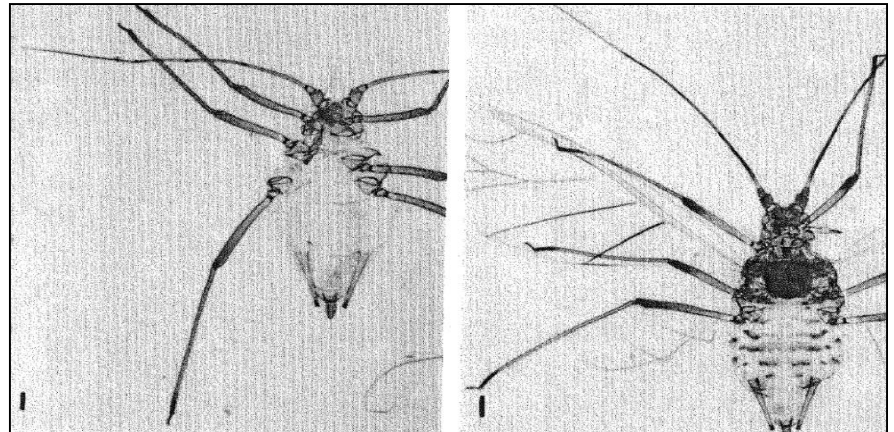
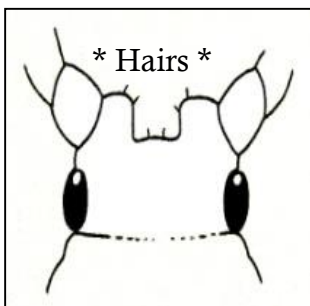


- **Body Color:** Variations of green, pink and red with bright red eyes
- **Body Length:** 0.07 – 0.14 inches
- **Antennae:** 1 ¼ length of body, clear to dark near tip
- **Cornicles:** Long, approx. 1/3 length of body, slight bend outwards, light brown color towards tip
- **Legs:** Long and darker at tips
- **Cauda:** Long, finger shaped, light in color

Foxglove/Glasshouse Potato Aphid (*Aulacorthum solani*)



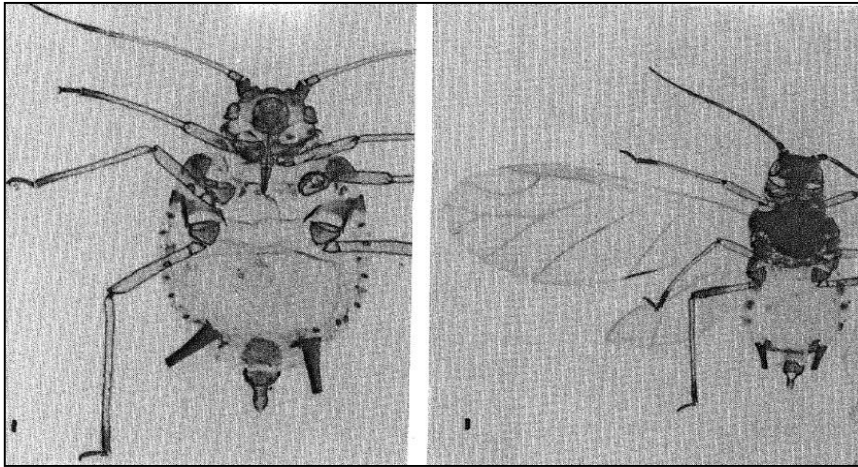
Head shape



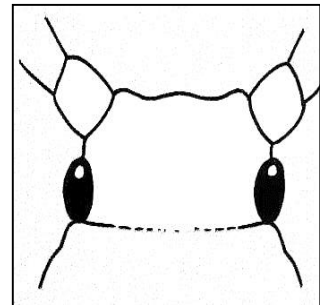
- **Body Color:** Yellow green to brown green
- **Body Length:** 0.07 to 0.12 inches
- **Antennae:** Long - 1 ½ length of body, dark banded
- **Cornicles:** Long, approx. ¼ length of body, bulge towards tip, green color with black tip, base has dark spots on body
- **Legs:** Long with dark bands
- **Cauda:** Short, light in color, finger shaped

APHID ID

Cotton/Melon Aphid (*Aphis gossypii*)



Head shape

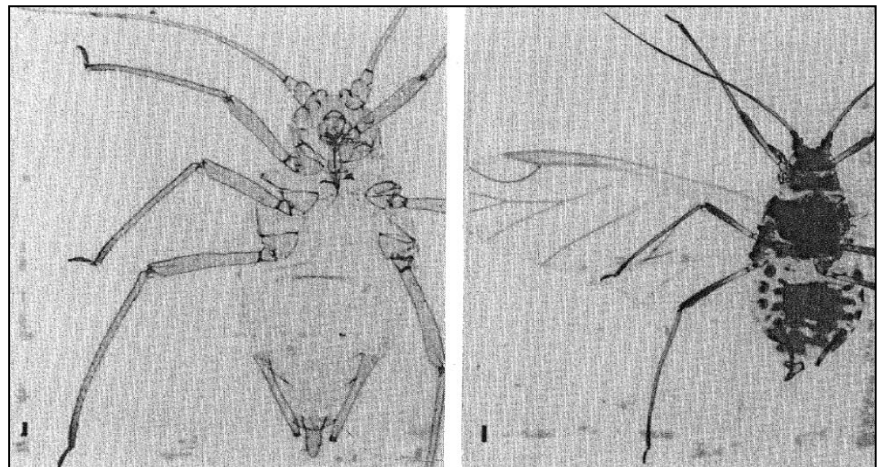
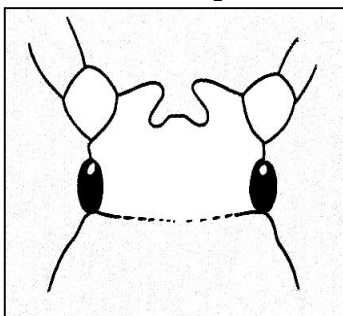


- **Body Color:** Light yellow to light/dark green
- **Body Length:** 0.04 – 0.07 inches
- **Antennae:** $\frac{3}{4}$ length of body
- **Cornicles:** Short, convergent and black in color
- **Legs:** Short
- **Cauda:** Short, tongue shaped, has hairs

Green Peach/Peach Potato/Tobacco Aphid (*Myzus persicae*)



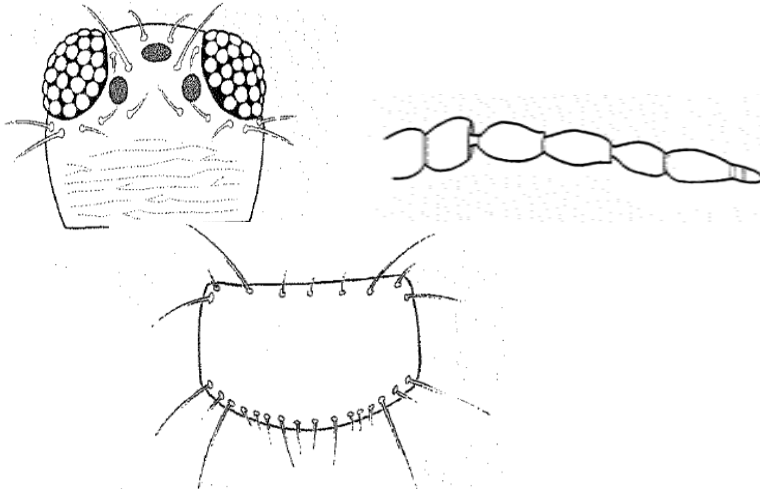
Head shape



- **Body Color:** Variations of green, pink or red
- **Body Length:** 0.05 – 0.08 inches
- **Antennae:** Same length as body
- **Cornicles:** $\frac{1}{2}$ length of body, swollen at tips, light green to brown color
- **Legs:** Short
- **Cauda:** Short and finger shaped

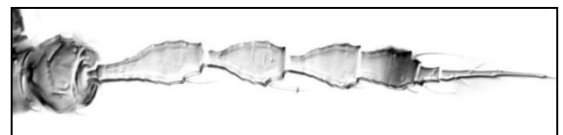
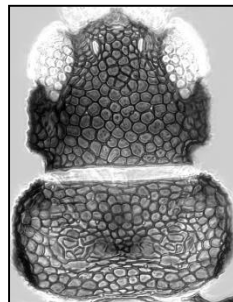
THRIPS ID

Western Flower Thrips (*Frankliniella occidentalis*)



- **Body Color:** Light yellow to dark brown. Yellow forms usually have grey bands on abdominal segments.
- **Body Length:** 0.05 – 0.06 inches
- **Antennae:** 8 segments
- **Head:** 2 long hairs between the red ocelli. Long hairs and numerous short behind compound eyes
- **Pronotum:** 5 pairs of distinct long hairs with smaller hairs between.

Greenhouse Thrips (*Heliothrips haemorrhoidalis*)



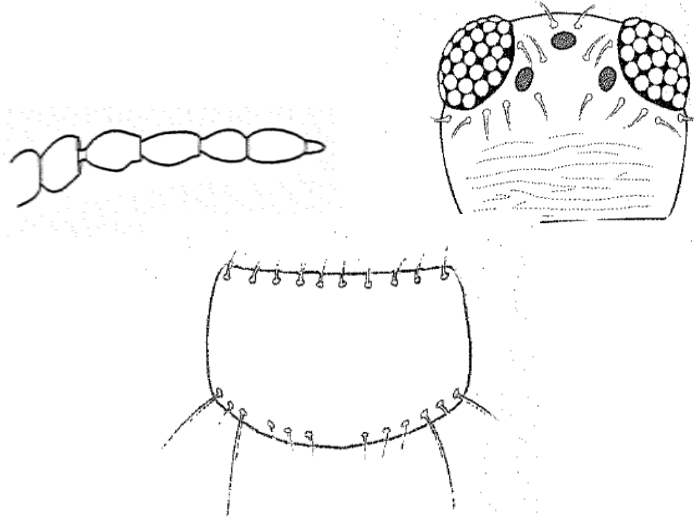
- **Body Color:** Dark brown with light brown at tip of abdomen. Legs yellow
- **Body Length:** 0.05 – 0.07 inches
- **Antennae:** 8 segments with needle like tip
- **Head and pronotum:** Distinct hexagonal reticulated pattern. Hairs very small.

© C.E. Frank & M. Skinner, Univ. of VT, Entomology Research Laboratory 2012, Educational Use Only

Photo Credits: Koppert Biological Systems, UC IPM Program, Univ. of Florida Ext., World Thysanoptera Database, Thrips of California Website

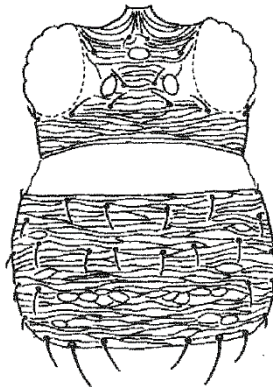
THRIPS ID

Onion Thrips (*Thrips tabaci*)



- **Body Color:** Yellow-gray – dark gray. Sometimes has dark blotches on thorax and abdomen.
- **Body Length:** 0.03 – 0.05 inches
- **Antennae:** 7 segments
- **Head:** 2 short hairs between red ocelli.
- **Pronotum:** 2 pairs distinct long hairs with smaller hairs between.

Chili Thrips (*Scirtothrips dorsalis*)



- **Body Color:** Yellow orange with incomplete dark stripes on abdomen.
- **Body Length:** less than 0.04 inches (very small compared to other species)
- **Antennae:** 8 segments
- **Head and pronotum :** Row of short hairs behind red ocelli. Closely spaced line pattern. Small hairs interspersed on pronotum.

Natural Enemy ID

Aphidius spp.



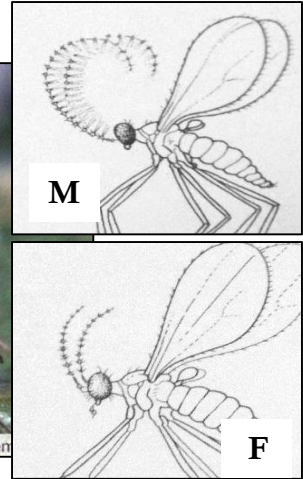
- **Body Color:** Black
- **Body Length:** 0.10 inches
- **Antennae:** Long, $\frac{3}{4}$ length as body
- **Legs:** Long and light brown in color



- **Form:** Contained within a 'mummy'
- **Mummy Color:** Golden brown
- **Body Length:** 0.12 inches

Aphidoletes spp.

Adults



- **Body Color:** Black-brown-gray
- **Body Length:** 0.10 inches
- **Antennae:** 14 segments. Males very long and curled backwards with long hairs. Females shorter with shorter hairs.
- **Legs:** Long and thin
- **Key Wing Characteristic:** Lack a "Y" shaped main vein on wing that fungus gnats have.

Larvae



- **Form:** Maggot
- **Body Color:** Orange – Red
- **Body Length:** 0.10 inches

Natural Enemy ID

Encarsia formosa

Eretmocerus eremicus and *mundus*

Adults



- **Body Color:** Females with black-brown thorax and yellow abdomen. Males all black.
- **Body Length:** 0.02 inches

- **Body Color:** Males and females yellow with green eyes
- **Body Length:** 0.03 inches

Developing Larvae (Parasitized Nymphs)

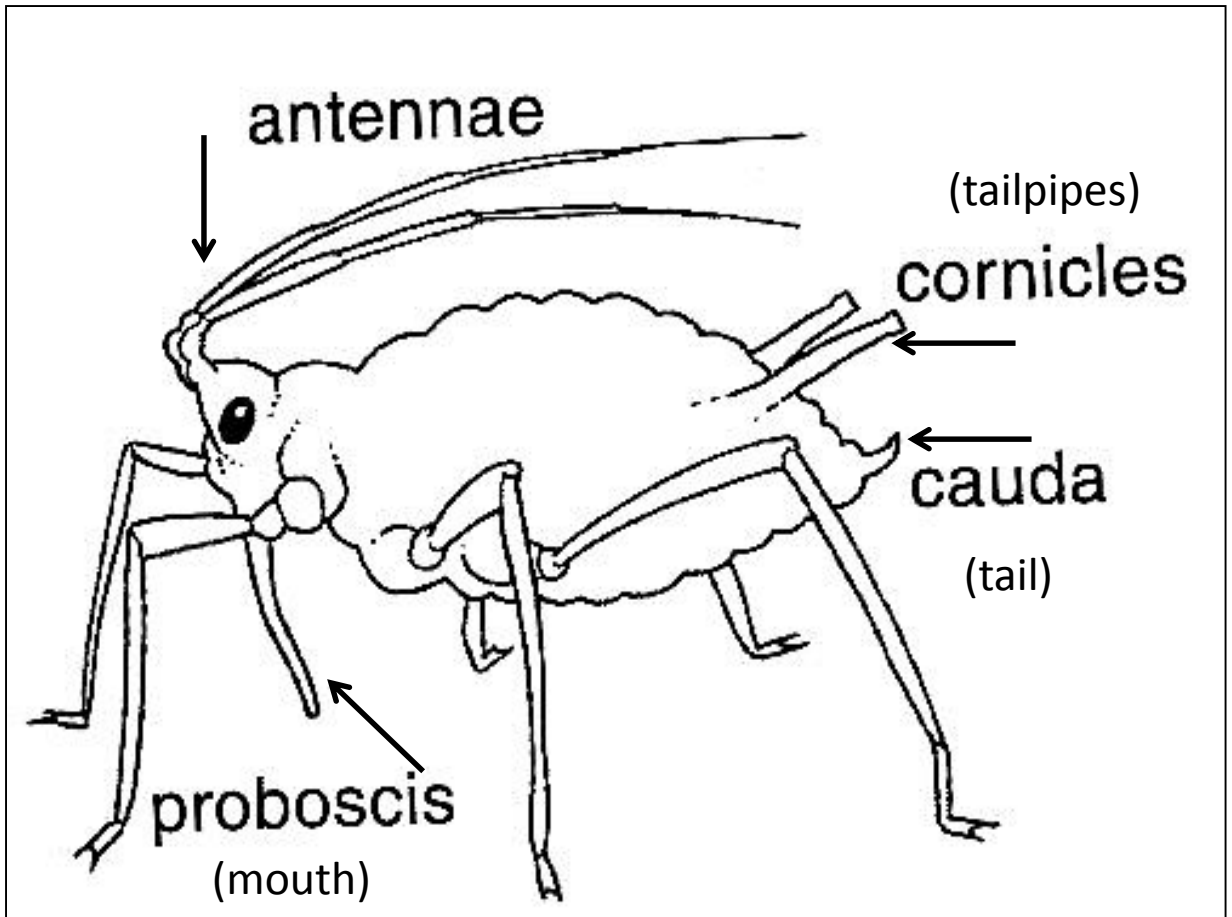


- **Color:** Black
- **Length:** 0.03 inches



- **Color:** Golden Brown
- **Length:** 0.03 inches

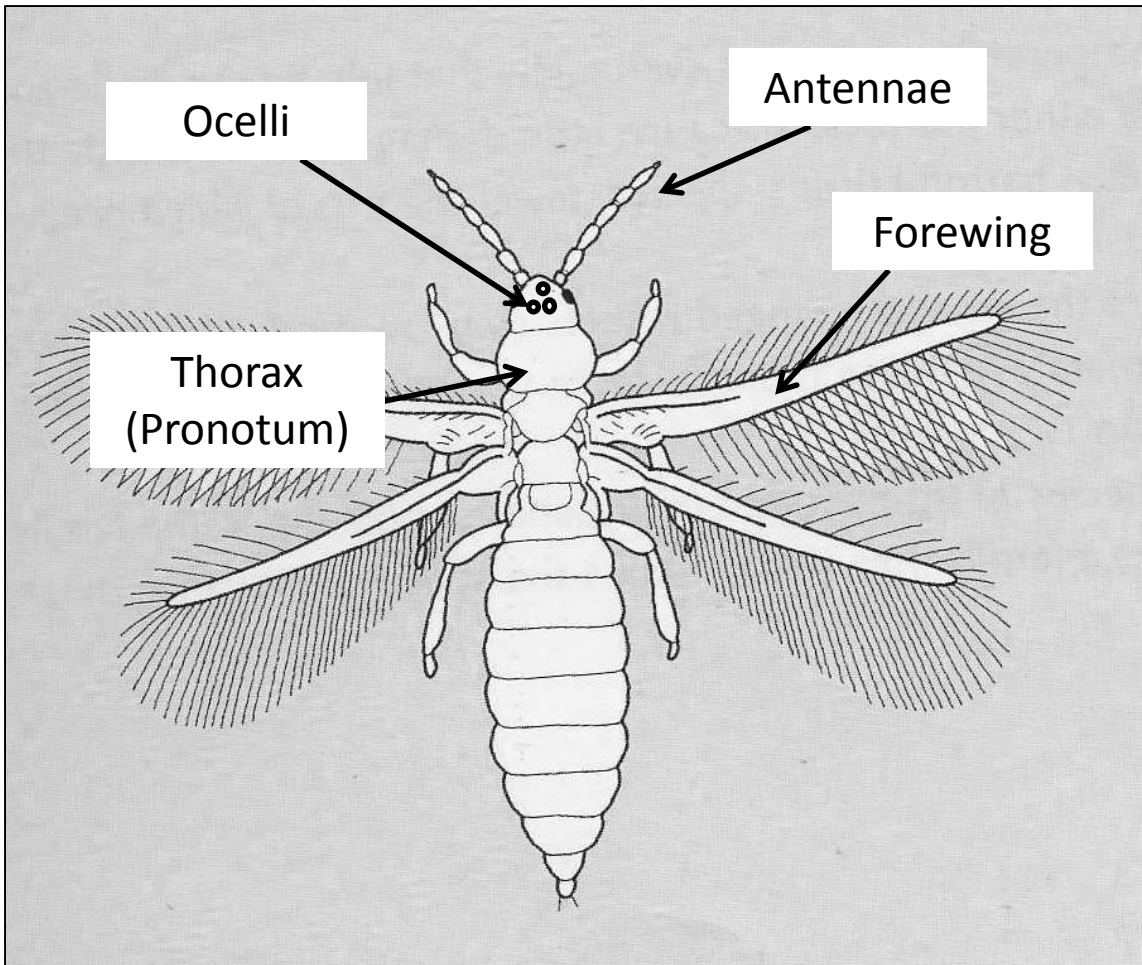
Important Aphid Body Features



Don't id your aphids based on color alone!

When in doubt send specimens for id to the
Plant Diagnostic Laboratory in your state!

Important Thrips Body Features



Thrips are very small and difficult to id to species without a microscope.

When in doubt, send specimens for id to the Plant Diagnostic Laboratory in your state!