

APHIDIUS

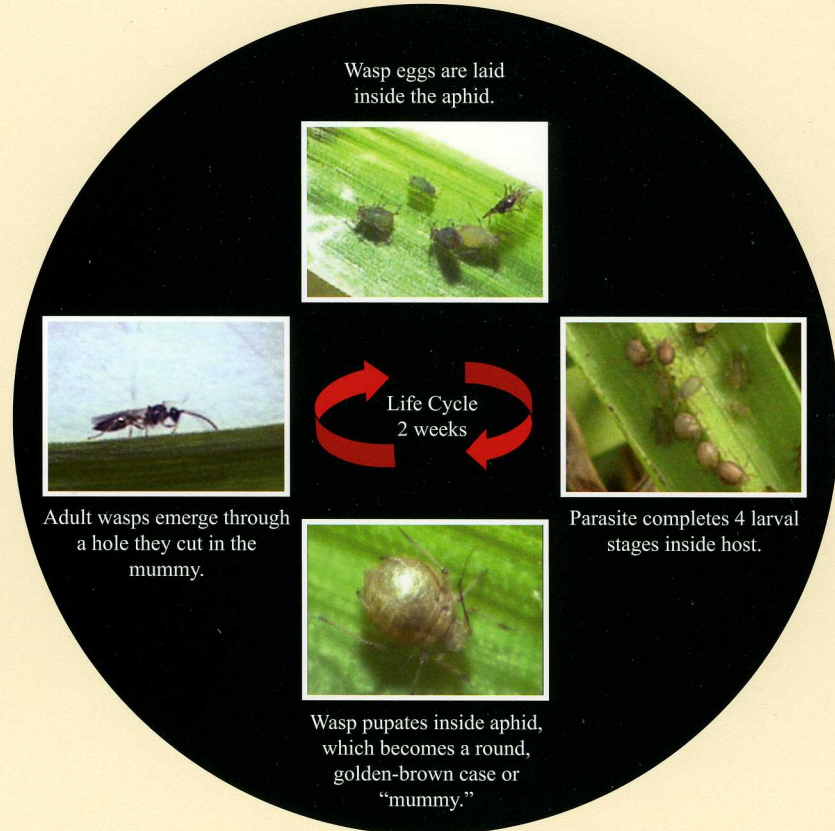
Aphidius are small wasps (0.08-0.12 in long) that parasitize aphids. They lay many eggs and complete their life cycle quickly. Some species are host-specific, so care must be taken to select the right species for the aphid present. Many species occur in the Northeast and enter greenhouses naturally.



Aphidius preparing to parasitize an aphid

Species commercially available:

Aphidius colemani, *Aphidius ervi*, *Aphidius matricariae*



Photos by Peter J. Bryant and Cheryl Frank.

© University of Vermont, Entomology Research Laboratory 2005