

Fluencies Summary

MU 109

Fluency 1. Identify these thirds as “maj” or “min. (one minute only)

(NB: clef change in effect until the end)



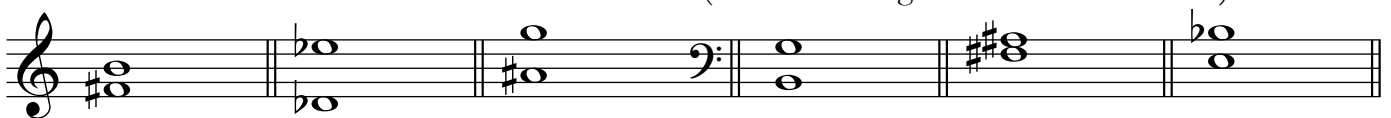
Fluency 2. Construct the indicated third **above** the given note. **Do not alter** the given note. (one minute only)

(NB: clef change in effect until the end)



Fluency 3. Identify intervals (up to a M10th) by size and quality.

(NB: clef change in effect until the end)

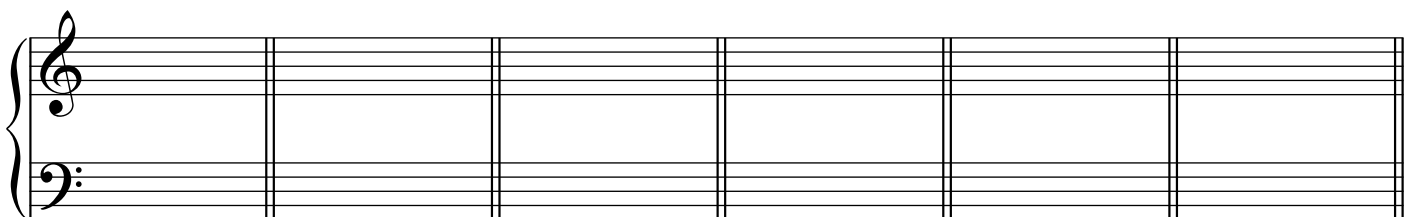


Fluency 4. Construct the specified interval **above** the given pitch.

(NB: clef change in effect until the end)



Fluency 5. Write out the specified key signature. Correct order and conventional placement (octave) count!



E major

A^b major

F[#] major

F[#] minor

D minor

B^b minor

Fluency 6. Construct the specified interval **below** the given pitch.

(NB: clef change in effect until the end)

A musical staff with a treble clef and a key signature of one flat (Bb). The staff contains six measures, each with a whole note and a double bar line. The notes are: Bb4, Bb3, B4, Bb3, Bb3, and Bb3. Below the staff, the intervals are labeled: M3, m6, M7, p5, +4, and m3.

Fluency 7. Construct triads of the specified quality over the given note as root.

(NB: clef change in effect until the end)

A musical staff with a treble clef and a key signature of one flat (Bb). The staff contains six measures, each with a whole note and a double bar line. The notes are: Bb4, Bb3, Bb4, Bb3, Bb3, and Bb3. Below the staff, the triad qualities are labeled: major, minor, dim, minor, dim, and aug.

Fluency 8. Identify the quality of triads (M, m, °, +) in close, root position.

(NB: clef change in effect until the end)

A musical staff with a treble clef and a key signature of one flat (Bb). The staff contains six measures, each with a triad and a double bar line. The triads are: Bb4-Bb3-Bb2, Bb4-Bb3-Bb2, Bb4-Bb3-Bb2, Bb4-Bb3-Bb2, Bb4-Bb3-Bb2, and Bb4-Bb3-Bb2.

Fluency 9. Identify these thirds as “maj” or “min. (one minute only)

(NB: clef change in effect until the end)

A musical staff with a treble clef and a key signature of one flat (Bb). The staff contains ten measures, each with a third and a double bar line. The thirds are: Bb4-Bb3, Bb4-Bb3, Bb4-Bb3, Bb4-Bb3, Bb4-Bb3, Bb4-Bb3, Bb4-Bb3, Bb4-Bb3, Bb4-Bb3, and Bb4-Bb3.

Fluency 10. Construct the indicated third **above** the given note. **Do not alter** the given note.

(one minute only)

A musical staff with a treble clef and a key signature of one flat (Bb). The staff contains ten measures, each with a whole note and a double bar line. The notes are: Bb4, Bb4, Bb4, Bb4, Bb4, Bb4, Bb4, Bb4, Bb4, and Bb4. Below the staff, the thirds are labeled: m3, M3, m3, m3, M3, M3, m3, m3, M3, and M3.

Fluency 11. Construct seventh chords of specified quality (Mm, mm, MM, o7, or ø7)

above the given note as root. Do not alter the given note.

(NB: clef change in effect until the end)

A musical staff with a treble clef and a key signature of one flat (Bb). The staff contains six measures, each with a whole note and a double bar line. The notes are: Bb4, Bb4, Bb4, Bb4, Bb4, and Bb4. Below the staff, the seventh chords are labeled: ø7, Mm7, o7, MM7, o7, and mm7.