

MU 109 (Feurzeig) Assignment 7: Triads Review (2 pages)

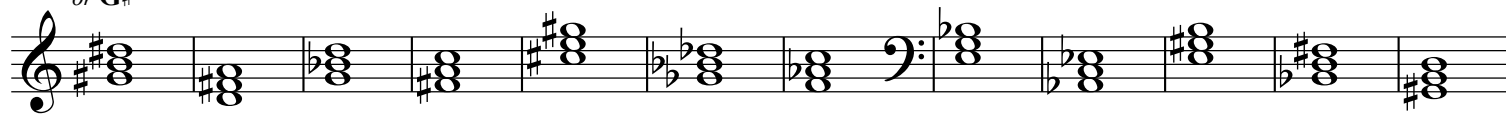
Name _____

Refer to MGTA chapter 7 as needed.

Identify the following triads using an appropriate pop chord symbol **above** the staff.

Use **only capital letters** for chord roots.

Ex: **G#m**
or **G#-**



bass clef remains in effect!

Identify the following triads **completely** using:

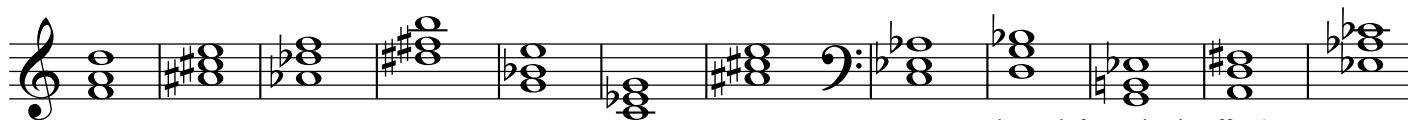
1) (above the staff) an appropriate pop chord symbol, with slash notation as needed for inversions

2) (below the staff) “classical” nomenclature, including fig. bass numerals as needed for inversions.

One correct symbol in each category is sufficient—you do not need to include multiple options.

Examples

pop symbol: **Dm/F** **A#°**

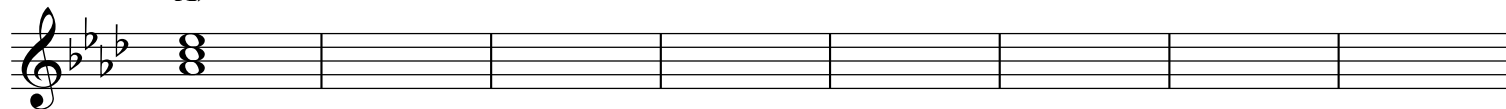


bass clef remains in effect!

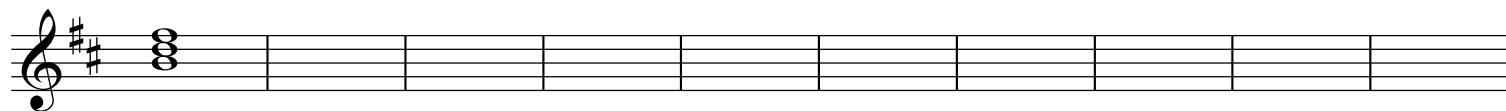
classical: **D min⁶** **A#°**
or **D min₃⁶** **A# dim.**

Write the indicated triads in the given keys, and add an appropriate lead-sheet symbol above the staff.

A^b



A^b: I IV vi vii° ii V I iii



Bm: i iv ii° III V v VI vii° VII III+
(not the same!) (not the same!)

- 1) (above the system) an appropriate pop chord symbol, with slash notation as needed for inversions
- 2) (below the system) an appropriate roman numeral in the given key, including fig. bass numerals only as needed

Example 1: A 12-measure piece in B-flat major, 2/4 time. The notation is in grand staff (treble and bass clefs). The key signature has two flats (B-flat and E-flat). The time signature is 2/4. The piece is divided into three measures by bar lines. The first measure is labeled "Bb/D" above the staff and "Bb: I⁶" below the staff. The second measure is labeled "A:" below the staff. The third measure is labeled "Db:" below the staff. The notation includes various chords and single notes, with some notes beamed together. The piece ends with a double bar line.

This example uses SATB notation. Note that **all four voices are always present**, even if sustained from a preceding beat.

F

Key of F: I

The musical score for 'The Rose Tree' is presented in a grand staff format, featuring a treble and bass clef. The key signature is one flat (B-flat), and the time signature is 4/4. The melody is written in the treble clef, and the accompaniment is in the bass clef. The score consists of 11 measures, with the first measure containing a treble clef, a key signature of one flat, and a time signature of 4/4. The melody begins with a quarter note G4, followed by a quarter note A4, and then a quarter note B4. The accompaniment starts with a quarter note G3, followed by a quarter note A3, and then a quarter note B3. The score is divided into three systems, with the first system containing measures 1 through 5, the second system containing measures 6 through 10, and the third system containing measure 11. The melody concludes with a quarter note G4 in the final measure.