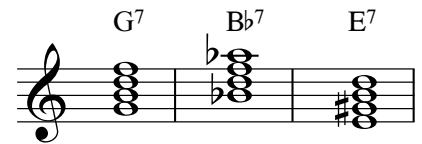
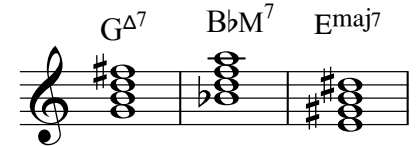


MU 009 (Feurzeig)  
Common seventh chords with lead-sheet symbols

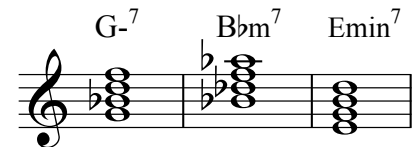
A major triad with a minor seventh is called a **dominant seventh** chord. The most common 7th chord, its symbol is a simple “7”.



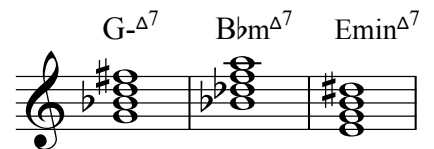
A major triad plus a major seventh is called a **major seventh** chord. The preferred symbol is Δ7 or M7. You may also see “maj7” or “ma7”.



A minor triad plus a minor seventh is called a **minor seventh** chord. The preferred symbol is -7 or m7. You may also see “min7” or “mi7”.



A minor triad plus a major seventh is called a **minor-major seventh** chord. The symbol uses any of the variants for minor plus “Δ7”.



A diminished triad plus a diminished seventh is called a **diminished seventh** chord. The symbol is °7 or dim7.



A diminished triad plus a minor seventh is called a **half-diminished seventh** chord. The symbol is ø7 or min7b5. The symbol remains the same if the diminished fifth of the chord is a natural rather than a flat.

