

Transportation Planning and Analysis & Census Bureau Data in 2010 and beyond

Fred Schmidt

Will “Chip” Sawyer

Center for Rural Studies
& Vermont State Data Center
University of Vermont

October 25, 2010



The United States Census

- For many years, a decennial source of socio-economic and transportation behavior data.
 - Other than population, race and housing unit counts, all data came from a sample-based “long form” survey.
 - Data has been the basis of the Census Transportation Planning Products program (CTPP)
 - Home- and Work-Based Profiles
 - Journey to Work and Worker Flow

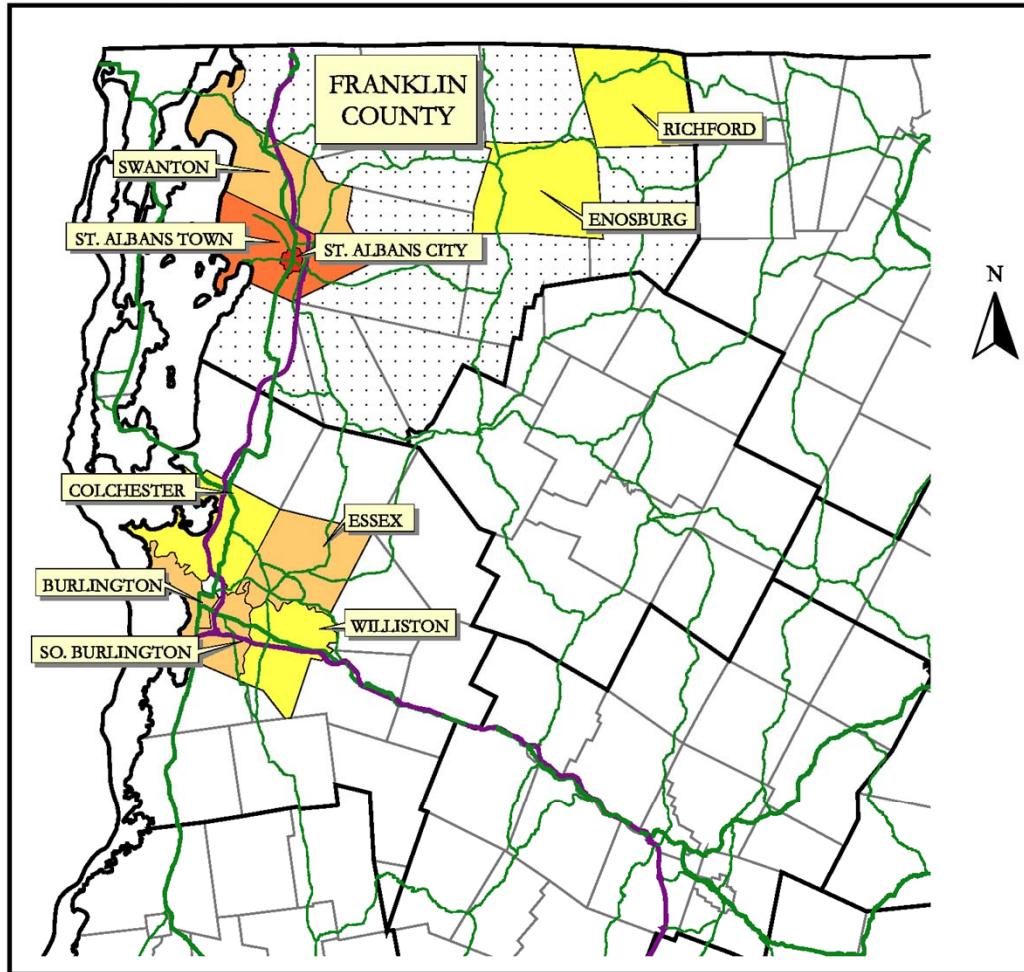
Franklin County Commuting Data, 2000

County to County		
County of Work	Count	Percent
Franklin Co.	14,420	63.9
Chittenden Co.	7,292	32.3
Lamoille Co.	280	1.2
Out of State	223	1.0
Washington Co.	144	0.6
Orleans Co.	61	0.3
Addison Co.	59	0.3
Grand Isle Co.	49	0.2
Caledonia Co.	18	0.1
Rutland Co.	16	0.1
Orange Co.	13	0.1
Windsor Co.	3	0.0
Bennington	0	0.0
Essex	0	0.0
Windham	0	0.0
Total	22,578	100.0
<i>Commute Outside County</i>	<i>8,158</i>	<i>36.1</i>

Towns where Top 75% of Resident Workforce is Employed			
Workplace	Count	%	Cumulative %
St. Albans city Franklin Co.	5,043	22.3	22.3
St. Albans town Franklin Co.	2,489	11.0	33.4
Essex town Chittenden Co.	1,883	8.3	41.7
Swanton town Franklin Co.	1,686	7.5	49.2
Burlington city Chittenden Co.	1,560	6.9	56.1
South Burlington city Chittenden Co.	1,217	5.4	61.5
Enosburg town Franklin Co.	1,057	4.7	66.1
Williston town Chittenden Co.	806	3.6	69.7
Colchester town Chittenden Co.	692	3.1	72.8
Richford town Franklin Co.	690	3.1	75.8

FRANKLIN COUNTY

Commuter Flow to Towns Where Top 75 Percent of County Resident Workforce Is Employed



Percent of Franklin County Resident Workforce Employed

- 3.1 - 4.7%
- 4.7 - 8.3%
- 11.0% (St. Albans Town)
- 22.3% (St. Albans City)

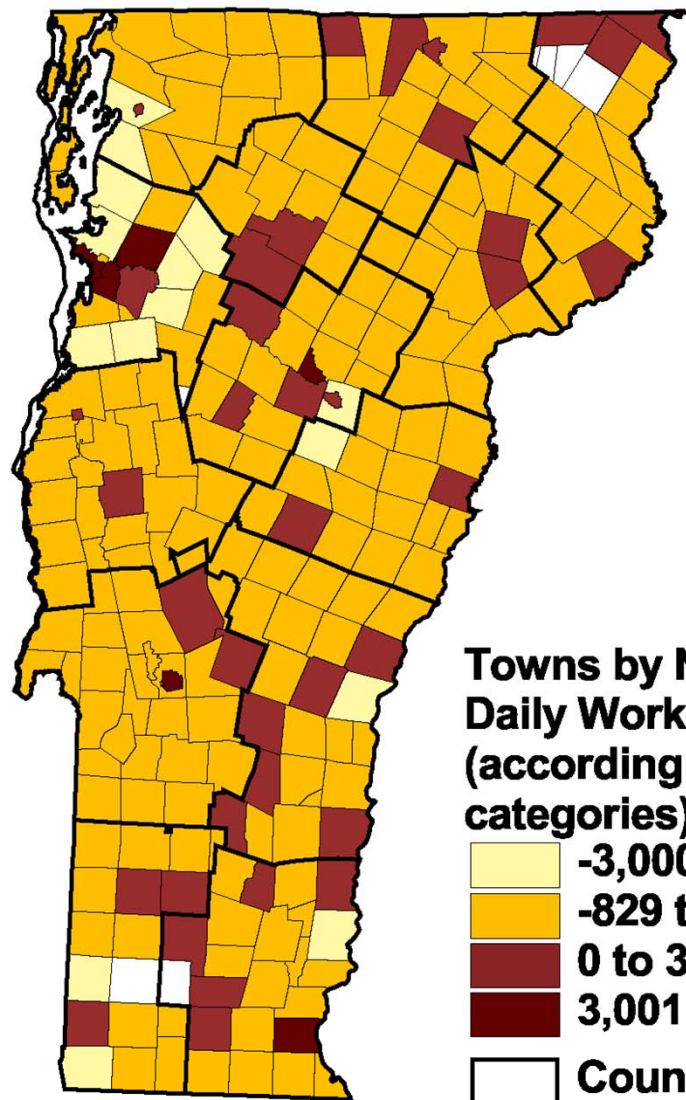
SOURCES:

Commuting Data: U.S. Census Bureau, 2000 Census of Population and Housing

Road Centerlines: Vermont Agency of Transportation

Political Boundaries: Vermont Center for Geographic Information

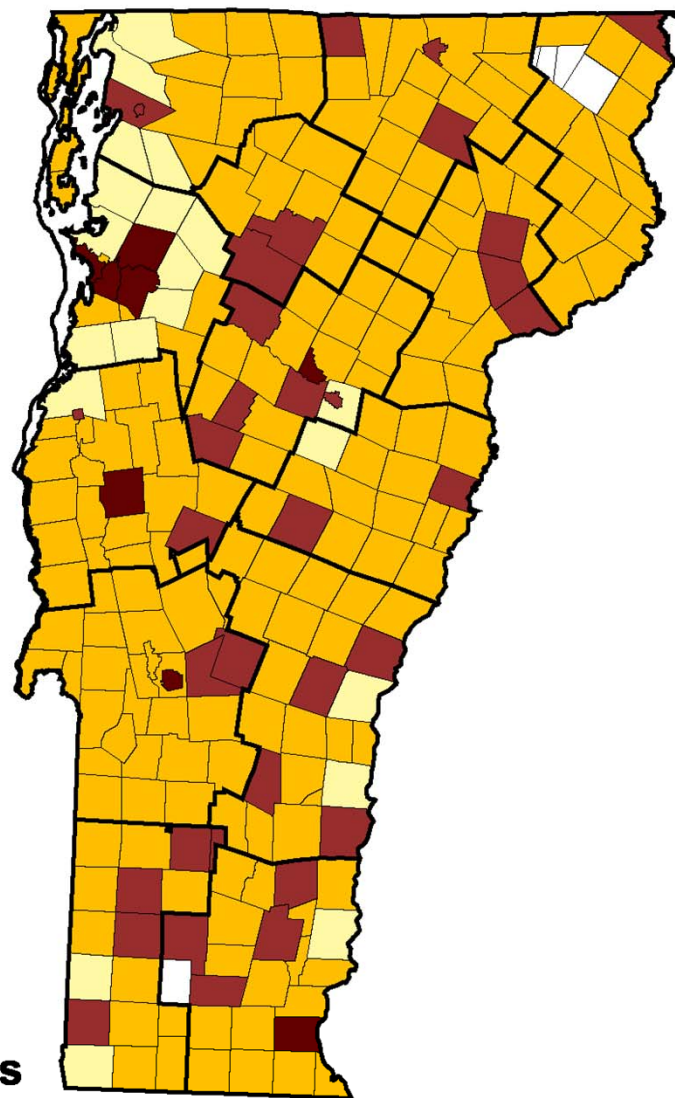
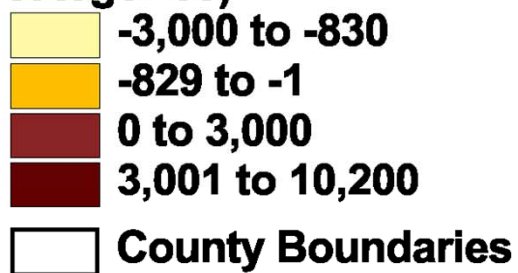
- Interstate
- U.S. Highways
- State Highways
- Counties
- Towns
- Franklin County



1990



**Towns by Net Imported
Daily Workers
(according to 1990
categories)**



2000

SOURCES

Worker Data: U.S. Census Bureau, 1990 and 2000 Censuses of Population and Housing
Political Boundaries: Vermont Center for Geographic Information



Changes in 2010

2010 Census

- “Short Form” Only
- Counts of People and Housing Units
- Basic Demographics

American Community Survey

- Since 2005
- Annual Data Releases
- Replacing the “Long Form”
- Characteristics of the Population: Income, Poverty, Transportation, Disability, Employment, Housing Conditions, etc.



The 2010 Census

Collected April-July 2010

“Short Form” only

- Population, Race and Housing Unit Counts

Release Schedule Summary:

- Dec 2010: State Population Counts
- May 2011: Demographic Profiles
- Jun-Aug 2011: Full data to block level
- Oct 2012: Urban/Rural delineations
- Jul-Aug 2013: CBSAs redefined



American Community Survey

- Annual Data Releases
- Replaces the Census “Long Form”
- Income, Poverty, Transportation, Disability, Employment, Ancestry, Education, Housing Conditions...
- Year-long enumeration of 3⁺ million U.S. households.
- Focus on Characteristics, not counts.



American Community Survey

Some Key Differences

- Margins of Error Included
- “Residence Rule” = more than 2 months
- Smaller geographies receive multi-year estimates
- Suppression of “unreliable” tables



American Community Survey

Data in Multi-Year Period Estimates

- Combine more than one year's sample
- First 5-year estimate planned for December 2010

Data Product	Population Threshold	Year of Data Release							
		2006	2007	2008	2009	2010	2011	2012	2013
		Year(s) of Data Collection							
1 - year Estimates	65,000+	2005	2006	2007	2008	2009	2010	2011	2012
3 - year Estimates	20,000+			2005- 2007	2006- 2008	2007- 2009	2008- 2010	2009- 2011	2010- 2012
5 - year Estimates	All Areas*					2005- 2009	2006- 2010	2007- 2011	2008- 2012



*All legal, administrative and statistical geographic areas down to the tract and block group level.



American Community Survey

Margins of Error

Median Age, Vermont, 2008

	Vermont	
	Estimate	Margin of Error
Median age --		
Total:	41.5	+/-0.3
Male	40.3	+/-0.3
Female	42.8	+/-0.4

Source: U.S. Census Bureau, 2008 American Community Survey

- Data actually in ranges
 - Allow tests for statistical significance



American Community Survey

The Residence Rule

- Decides where you are counted



How many people are living or staying at this address?

- **INCLUDE** everyone who is living or staying here for more than 2 months.
- **INCLUDE** yourself if you are living here for more than 2 months.
- **INCLUDE** anyone else staying here who does not have another place to stay, even if they are here for 2 months or less.
- **DO NOT INCLUDE** anyone who is living somewhere else for more than 2 months, such as a college student living away or someone in the Armed Forces on deployment.

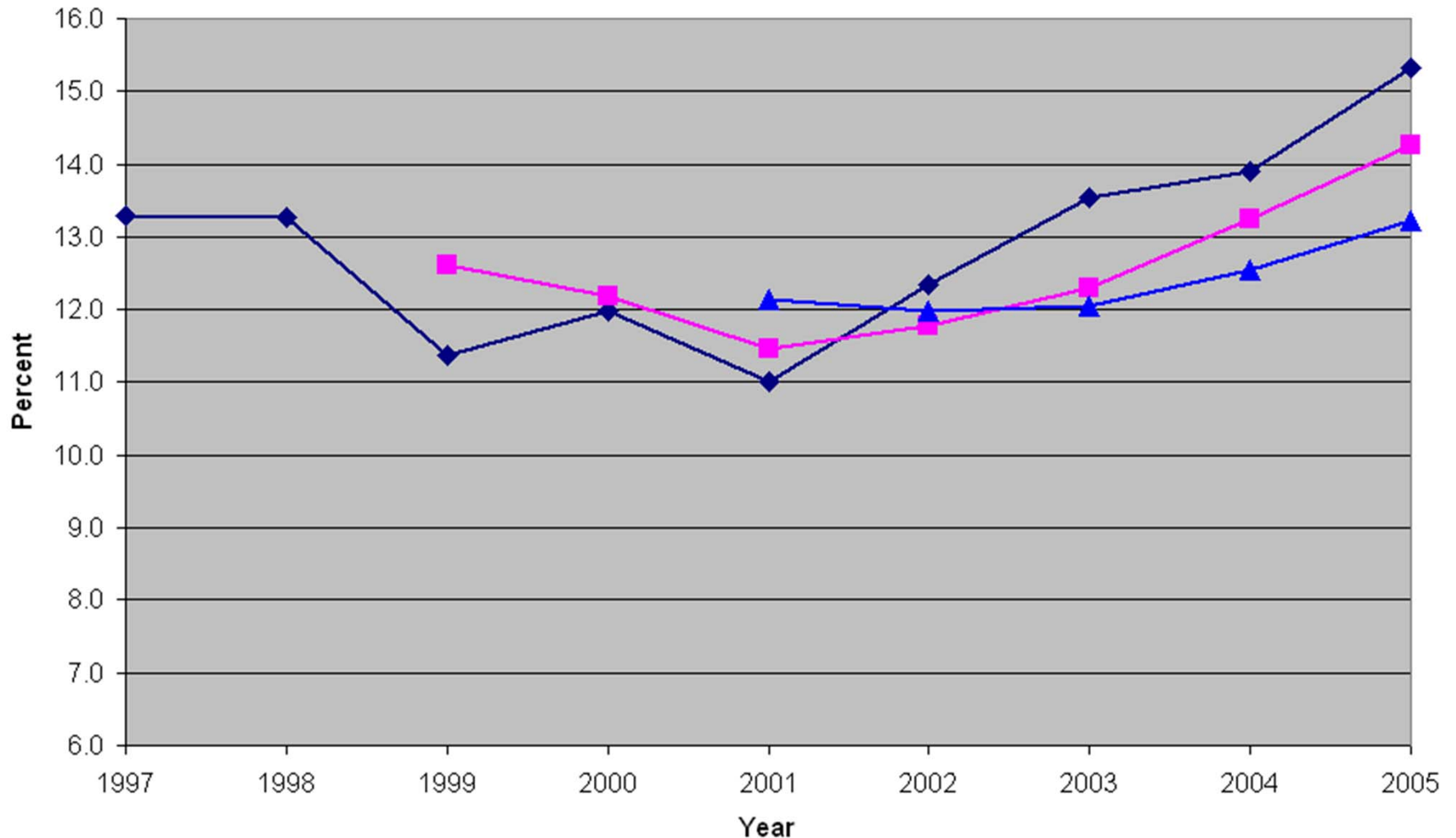
Number of people

- Includes seasonal residents

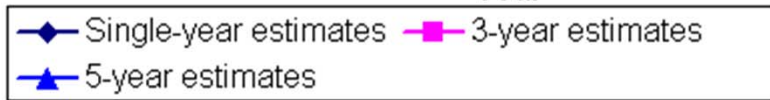
ACS Test Site Data

Courtesy of Nebraska State Data Center

Percentage of Omaha Population in Poverty (Individuals)



Source: American Community Survey, U.S. Census Bureau, 1997-2005



Note: The ACS only surveyed households and does not include the group quarters population.

3-Year Census Transportation Planning Products Release



What is the CTPP?

*A set of special tabulations from the American Community Survey tailored for the data needs of transportation planners

*Produced by the Census Bureau, sponsored and owned by American Association of State Highway Transportation Officials (AASHTO)

Slide prepared by U.S. Census Bureau and CTPP partners.

3-year CTPP Data Product



Available Late Nov. 2010
Based on ACS 2006, 2007, 2008
20,000 Pop. Areas

<http://trbcensus.com/products>

Slide prepared by U.S. Census Bureau and CTPP partners.

3-year CTPP Product Summary

- Based on CTPP2000 Tables
- Many NEW Univariate Tables
- More Age, Race, Household-level Tables
- Several Flow Tables Included
- Tables Include MOEs
- Reduced Number of Crosstabs with Mode
 - Travel time
 - Household income
 - Vehicle availability
 - Age
 - Time leaving home
- Tables will have Suppression
 - Means based on at least 3 values
 - At least 3 records in Flow

Slide prepared by U.S. Census Bureau and CTPP partners.



The 3-year Product Design

Based on 2000 Geography

Nation (US Total)
State
State-County
State-County-MCD
State-Place
State-PUMA
State-POW PUMA
Metropolitan Statistical Area
MSA – EACH Principal City

Product Structure

3-Parts

Part 1- Place of Residence

Part 2- Place of Work

Part 3- Flows between
Home and Work

Product documentation available at:

http://ctpp.transportation.org/Documents/CTPP_custom_tabulations_based_on_3yracs2006_2008.xls



Accessing the 3-year data

- All tables available for download online
 - Free, but you must register
 - Online tutorials available
- User Friendly Features:
 - Search for tables by keyword
 - Click on a map to select geography
- Early release of county-to-county flows:
<ftp://ftp.camsys.com/temp/outgoing/CTPP/New%20CTPP%20ACS/>

Slide prepared by U.S. Census Bureau and CTPP partners.



Other Forthcoming Commuting Products based on the ACS

- County-to-county home-to-work flows based on 5-year ACS 2006-2010
- Produced to support development of new metro area definitions

Slide prepared by U.S. Census Bureau and CTPP partners.



Key CTPP Contact

- **Penelope Weinberger**
AASHTO
CTPP Program Manager
202-624-3556
pweinberger@aaashto.org

<http://ctpp.transportation.org>

Slide prepared by U.S. Census Bureau and CTPP partners.



Thank you!

...*resources* and *expertise* to support
rural people and communities

Fred Schmidt
Will “Chip” Sawyer
Vermont State Data Center
at the UVM Center for Rural Studies
crs.uvm.edu/census
802-656-0892
wsawyer@uvm.edu
U.S. Census Bureau: census.gov

Presentation Download Available at uvm.edu/crs under “Reports and Presentations”

This presentation contains materials based upon work supported by the U.S. Department of Agriculture, under Award No. 2010-34269-20972. Any opinions, findings, conclusions, or recommendations expressed in this publication are those of the author(s) and do not necessarily reflect the views of the U.S. Department of Agriculture.

Special thanks to Senator Patrick Leahy.