

Marlboro Community Data Profile

Marlboro Community Visit

March 25, 2010

What follows is a collection of indicators and information on the town of Marlboro and its residents. **These data are meant to help inform the March 2010 Marlboro Community Visit by the Vermont Council on Rural Development**, but they certainly have many other uses.

Most of these indicators have been produced by the US Census Bureau. Sources also include the Vermont Departments of Taxes and Labor, among others.

Readers may note that much of the data for Marlboro was most recently collected for 1999 or 2000 as part of the 2000 Census. Alas, **the 2000 Census is still the most recent source of many indicators at the community level for most Vermont towns**. However the first release of community-level data from the US Census Bureau's American Community Survey is expected in November and December of 2010. And the first release of data from the 2010 Census is expected in the spring of 2011.

The UVM Center for Rural Studies engages in many projects to assist Vermonters in accessing and using community-level data for their towns, cities and villages. We encourage all Vermonters to familiarize themselves with some of the most common online sources of this data.

Vermonters will find community profiles with data from assorted sources at:

- **Vermont Indicators Online** – <http://crs.uvm.edu/indicators> and
- **Vermont Housing Data** – www.housingdata.org

Direct access to many of the agencies that produce the indicators can also be found at:

- the US Census Bureau's American FactFinder – <http://factfinder.census.gov>
- the Vermont Dept. of Labor's Covered Employment & Wages report – www.vtlmi.info/indnaics.htm
- the Vermont Dept. of Labor's Labor Force & Unemployment site – www.vtlmi.info/labforce.cfm
- the Vermont Dept. of Taxes' statistics site – www.state.vt.us/tax/statistics.shtml
- the Local Employment Dynamics site – <http://lehd.did.census.gov/led/datatools/onthemap4.html>
- the Vermont Crime Information Center – www.dps.state.vt.us/cjs/crimestats.htm and
- the USDA's Census of Agriculture – www.agcensus.usda.gov

Enjoy!

Center for Rural Studies

University of Vermont

www.uvm.edu/crs

crs@uvm.edu

802-656-3021

The Center for Rural Studies is a nonprofit, fee-for-service research organization that addresses the social, economic, and resource-based challenges faced by rural people and communities. Founded in the University of Vermont's College of Agriculture and Life Sciences in 1978, CRS supports the research and teaching missions of the university through its work in applied research, program evaluation, consulting, and outreach. CRS is also the US Census Bureau's State Data Center.

Table of Contents

Civics	1
Population Demographics.....	1
Housing	4
Income & Poverty	6
Employment.....	9
Education	11
Energy	12
Crime.....	12
Transportation & Commuting.....	13
Taxation	16
Natural Resources.....	16
Agriculture	17

Civics

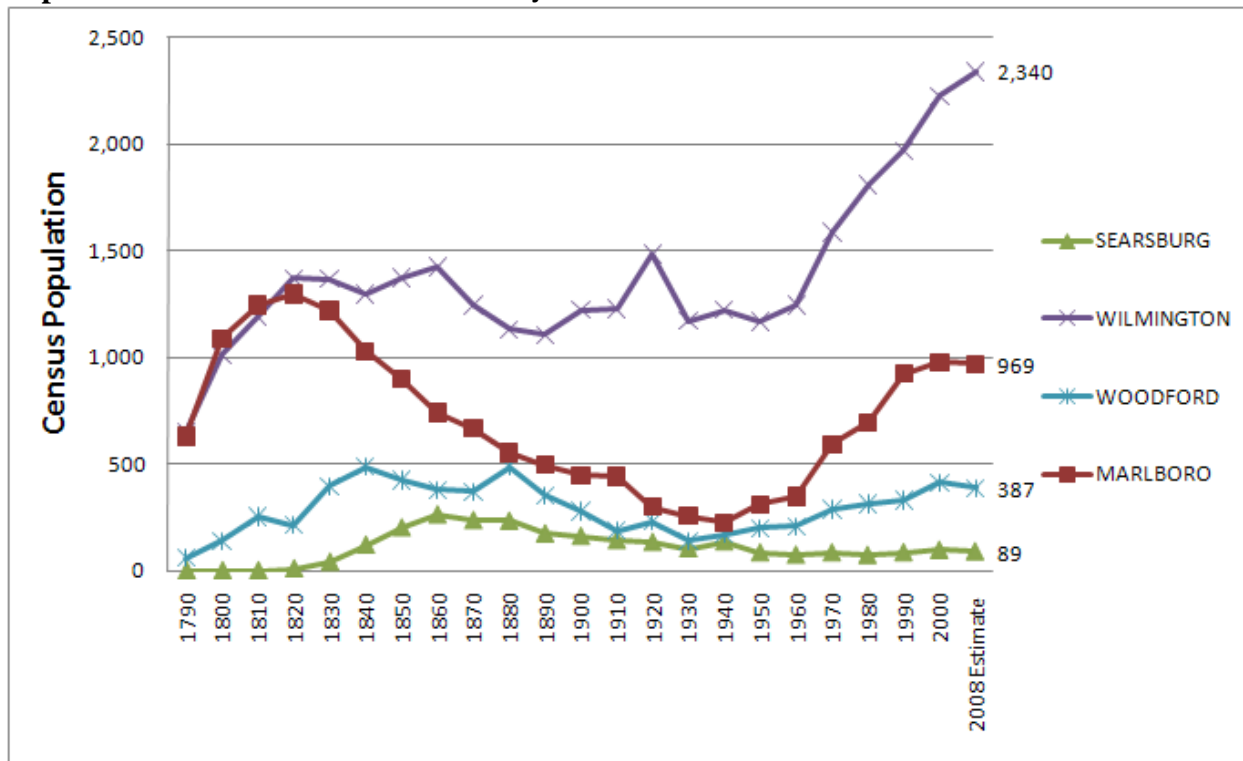
Marlboro Civic Stats	
Year Town Incorporated or Chartered	1751
Type of Entity	Municipality - Town
County	Windham County
Regional Planning Commission	Windham Regional Commission
Incorporated Villages	None
Municipal Plan	Yes
...approved by Regional Planning Commission	Yes
Zoning Ordinance	Yes
Subdivision Ordinance	Yes
Development Review Board	No
Development Category	3 - Outlying Town

Source: Various, including 2008 town planning survey by the VT Dept. of Housing and Community Affairs.

Population Demographics

Marlboro's population curve and population pyramids are typical of a rural college town.

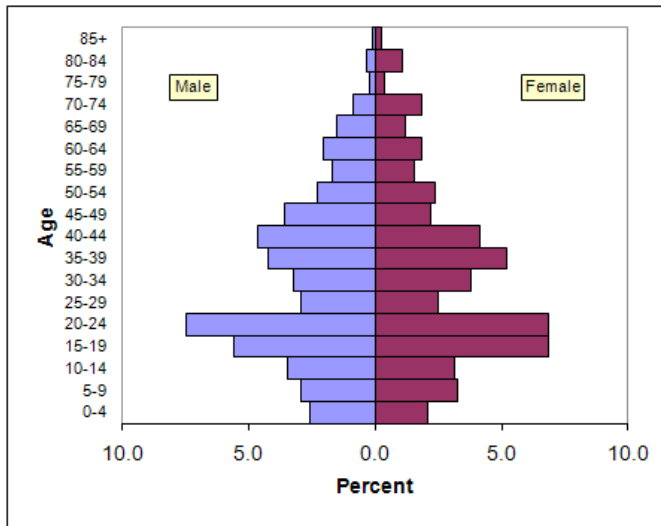
Population over Time - Marlboro and Adjacent Route 9 Communities



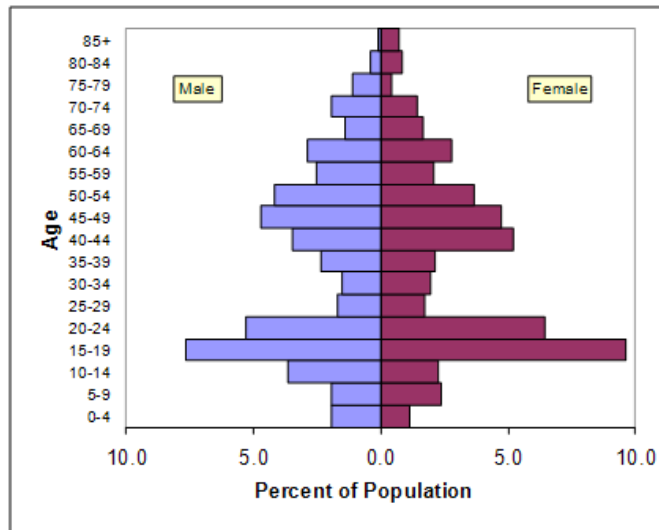
Source: US Census Bureau, Census of Population and Housing and Population Estimates Program.

Population Pyramids

Marlboro 1990



Marlboro 2000

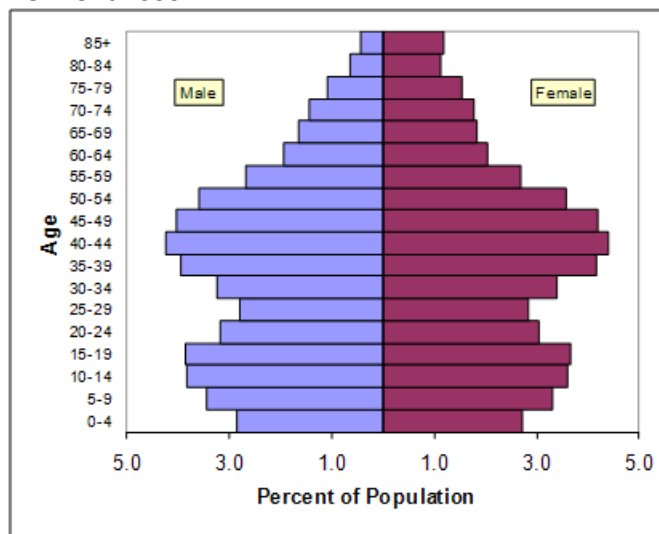


Source: US Census Bureau, Census of Population and Housing

Marlboro's population pyramid is typical of a college town, with the student population represented by the disproportionate bulge in the 15-24 age groups. Marlboro's pyramids also show the "Baby Boom Bulge," which you can see in the 35-54 age groups in both Marlboro and Vermont in 2000.

The influence of the college population can also be seen in the following table, which shows Marlboro's 2000 median age being slightly lower than the county and state.

Vermont 2000



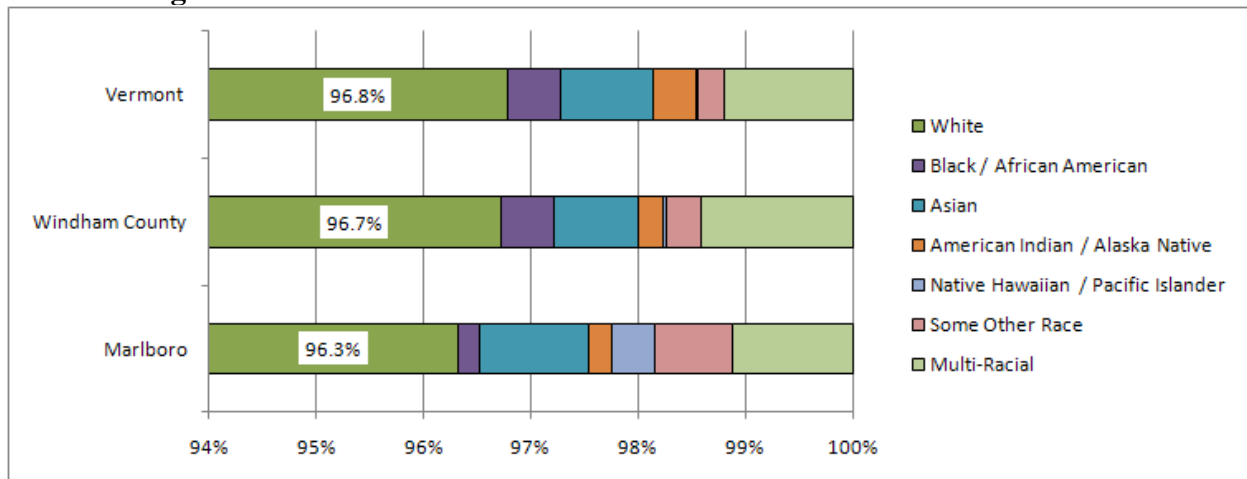
Median Age

	Census 2000	ACS 2006-2008 Average
Marlboro	36.7	<i>Expected Nov-Dec 2010</i>
Windham County	40.0	43.5 ±0.3
Vermont	37.7	40.9 ±0.2

Source: US Census Bureau, 2000 Census and 2006-2008 American Community Survey

Marlboro's racial make-up seemed very similar to the county and state in 2000. Proportional differences were only in tenths of percentage points. However, it could be that the college population or some other factors led to a slightly smaller proportion of residents who claimed to be White only.

Racial Background



Source: US Census Bureau, 2000 Census

In addition, 0.8% of Marlboro residents (of any race) claimed Hispanic or Latino origin in 2000. And 28.1% of all residents were born in Vermont, which was much lower than the statewide number of 54.3%.

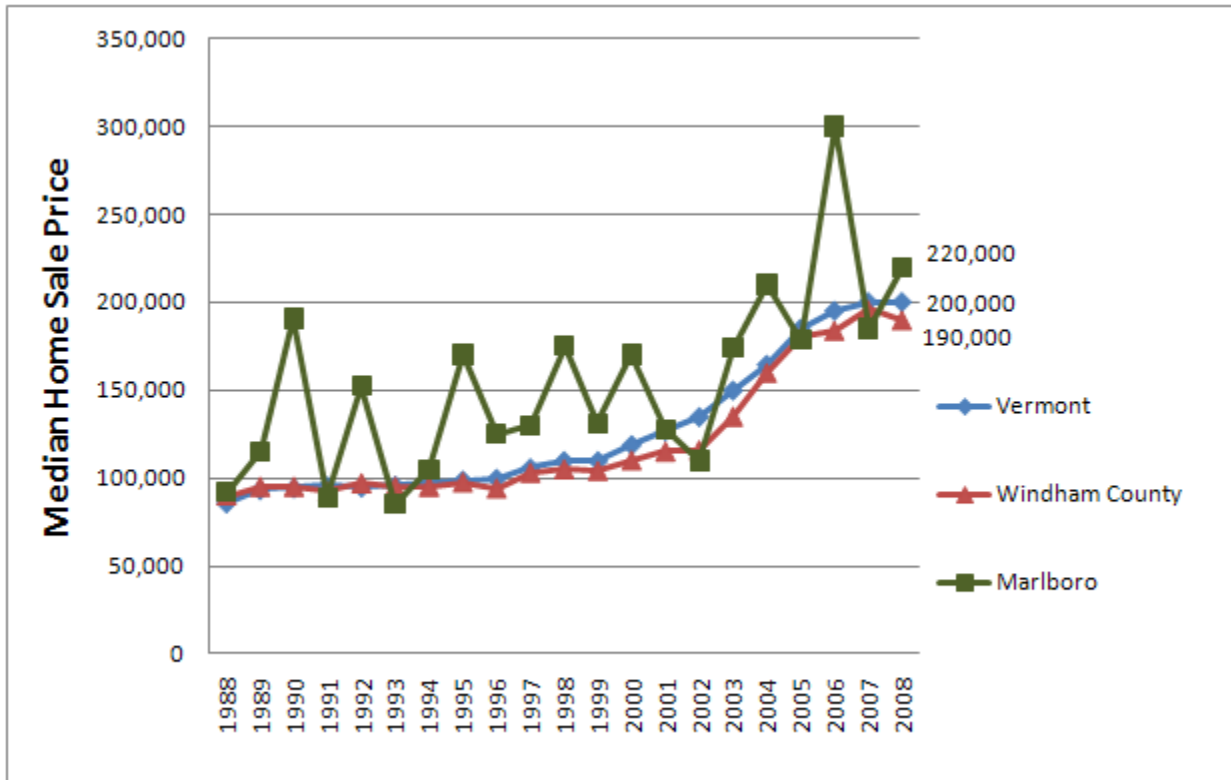
Housing

Marlboro had a higher proportion of seasonal units than the county and state in 2000, and the town's housing prices have been tracking higher as well.

Marlboro Housing Statistics, 2000 Census	Marlboro	Windham Co	Vermont
Total Housing Units	497	27,039	294,382
...Owner Occupied	272	12,479	169,784
<i>Owner occupied as percent of all housing</i>	54.7%	46.2%	57.7%
...Renter Occupied	58	5,896	70,850
<i>Renter occupied as a percent of all housing</i>	11.7%	21.8%	24.1%
...Vacant (not seasonal, recreational)	14	1,145	10,688
<i>Vacant (not seasonal/rec.) as a percent of all housing</i>	2.8%	4.2%	3.6%
...for Seasonal, Recreational, or Occasional Use	153	7,519	43,060
<i>Seasonal/recreational as a percent of all housing</i>	30.8%	27.8%	14.6%

Source: US Census Bureau, 2000 Census

Home Sale Prices



Source: Vermont Dept. of Taxes, calculated by Vermont Housing Finance Agency
 Note: Numbers are NOT adjusted for inflation

Despite higher home sale prices, Marlboro's homeownership and rental costs seemed slightly lower than the county and state, overall, in 2000.

Housing Costs, Census 2000

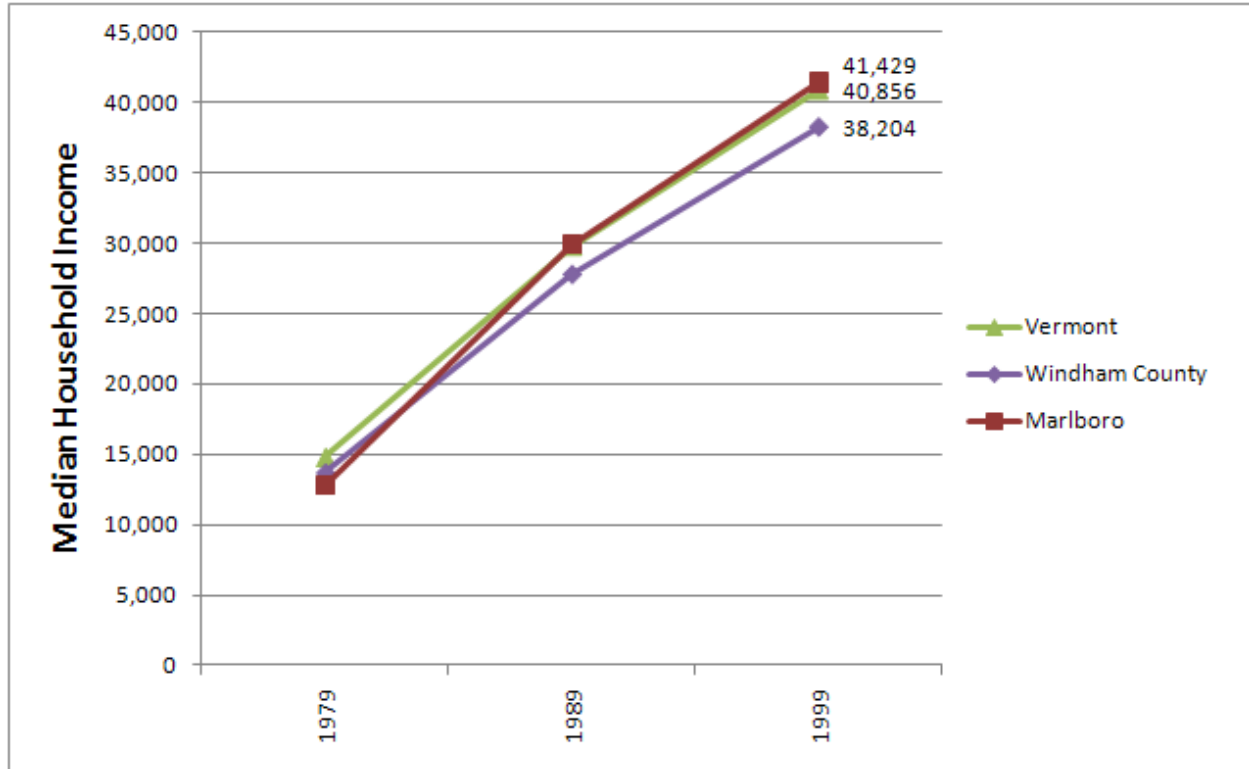
Median monthly homeownership costs	Marlboro	Windham Co	Vermont
... with mortgage	\$979	\$985	\$1,021
... without mortgage	\$425	\$393	\$378
<i>... as percentage of household income, 1999</i>	<i>18.7</i>	<i>20.1</i>	<i>20.2</i>
Median gross rent	\$536	\$552	\$553
<i>... as a percentage of household income, 1999</i>	<i>21.8</i>	<i>25.6</i>	<i>26.2</i>
Percentage of all households with housing costs at or above 30% of household income	28.4	29.1	28.7

Source: US Census Bureau, 2000 Census

Income & Poverty

Incomes earned by residents of Marlboro up until 1999 were similar, if not higher, than the county and state. More recent numbers from state income tax returns reflect this trend as well.

Median Household Income, 1979-1999



Source: US Census Bureau, Census of Population and Housing

Notes: These are the gross income numbers of residents of the given locations. Numbers are NOT adjusted for inflation

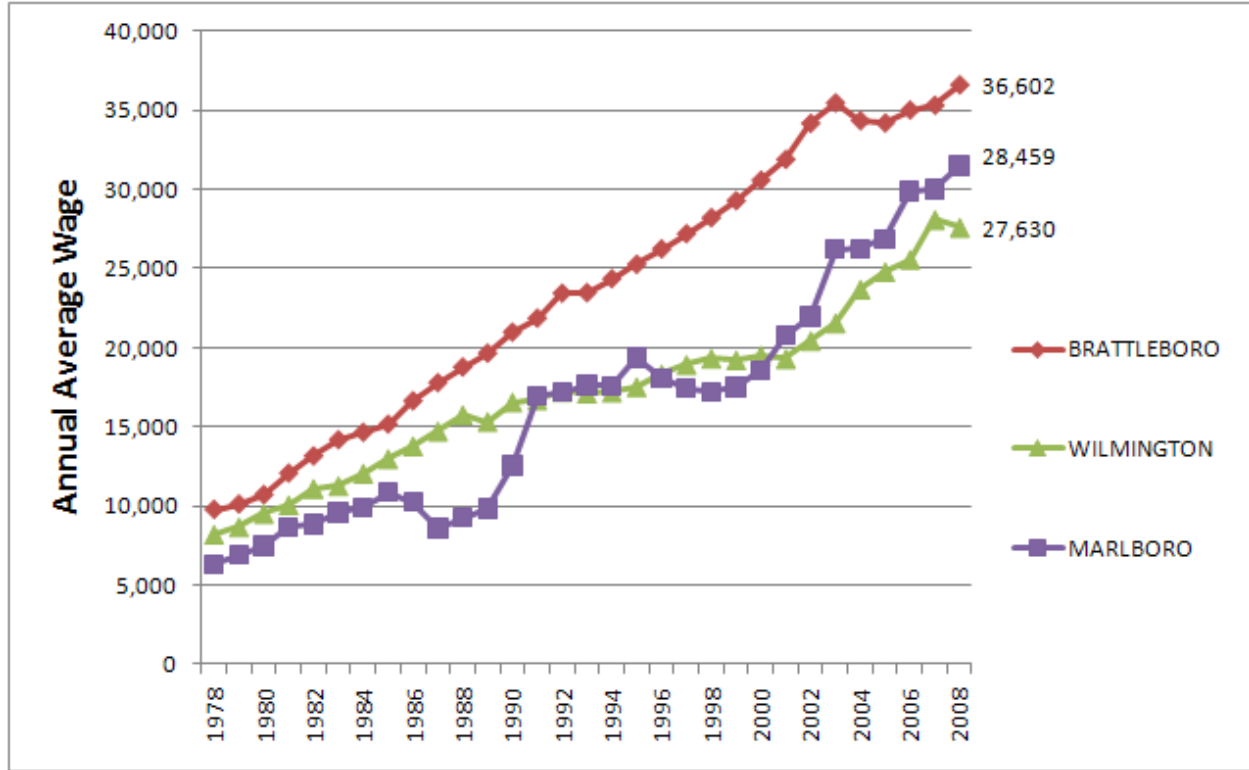
Other Marlboro Income Statistics	Marlboro	Windham Co	Vermont
Median Adjusted Gross Income per Family, 2008	\$55,467	\$51,425	\$58,069
Average Adjusted Gross Income per Person, 2008	\$24,063	\$21,566	\$23,048

Sources: Vermont Dept. of Taxes

Notes: Numbers are NOT adjusted for inflation

The below chart lists the average wages earned by jobs in the top three towns that Marlboro workers commuted to in 2008. The jobs in Marlboro have tracked in between those in Brattleboro and Wilmington. The actual income data of Marlboro residents may reflect that many Marlboro workers are in the higher-paying jobs in their respective areas or have some other sources of non-wage income.

Average Wages

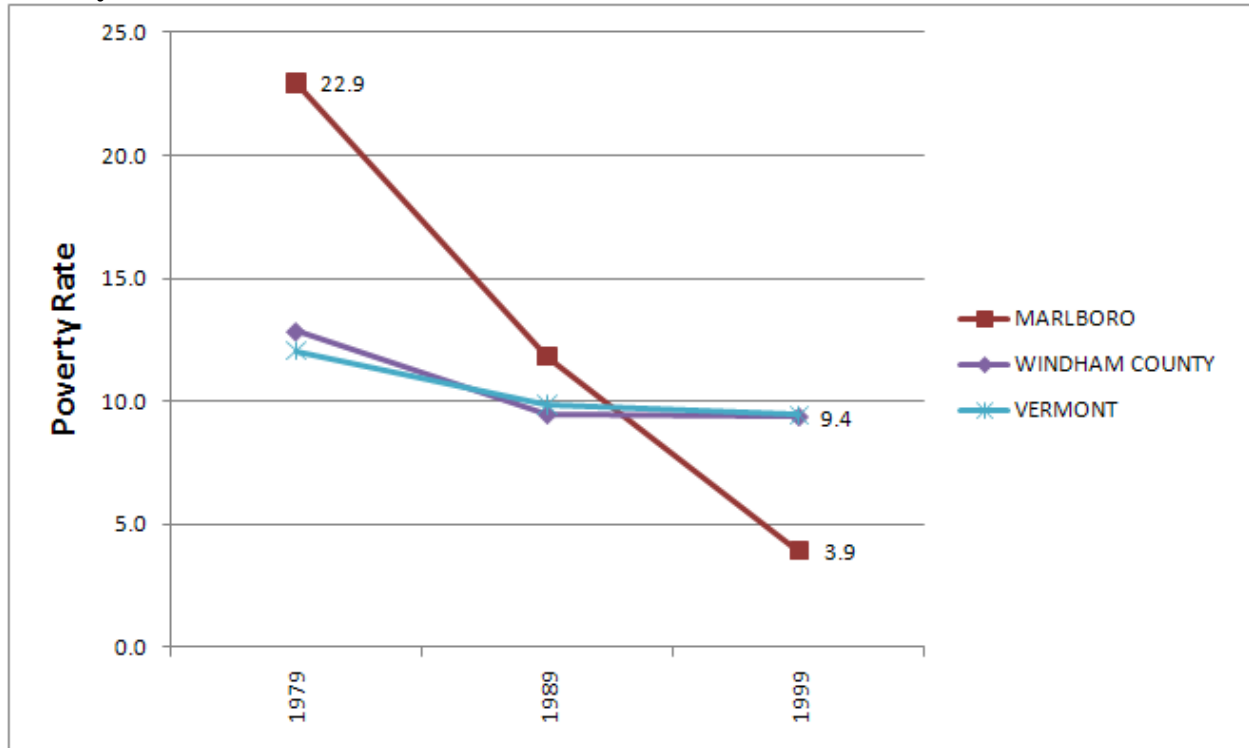


Source: Vermont Dept. of Labor

Notes: These are the average wages paid by employers in the given locations – e.g. not all Marlboro residents earn Marlboro wages. These numbers are LIMITED to employers that pay Unemployment Insurance. The numbers are NOT adjusted for inflation.

Between 1979 and 1999, Marlboro's poverty rate went through drastic changes when compared to the county and state. Fortunately the change was a sharp decrease in the rate. Other data do not point to a likely explanation for very high rate in 1979 and low rate in 1999. Perhaps Marlboro residents know? It will be interesting to see what the American Community Survey reveals for poverty in Marlboro later this year.

Poverty



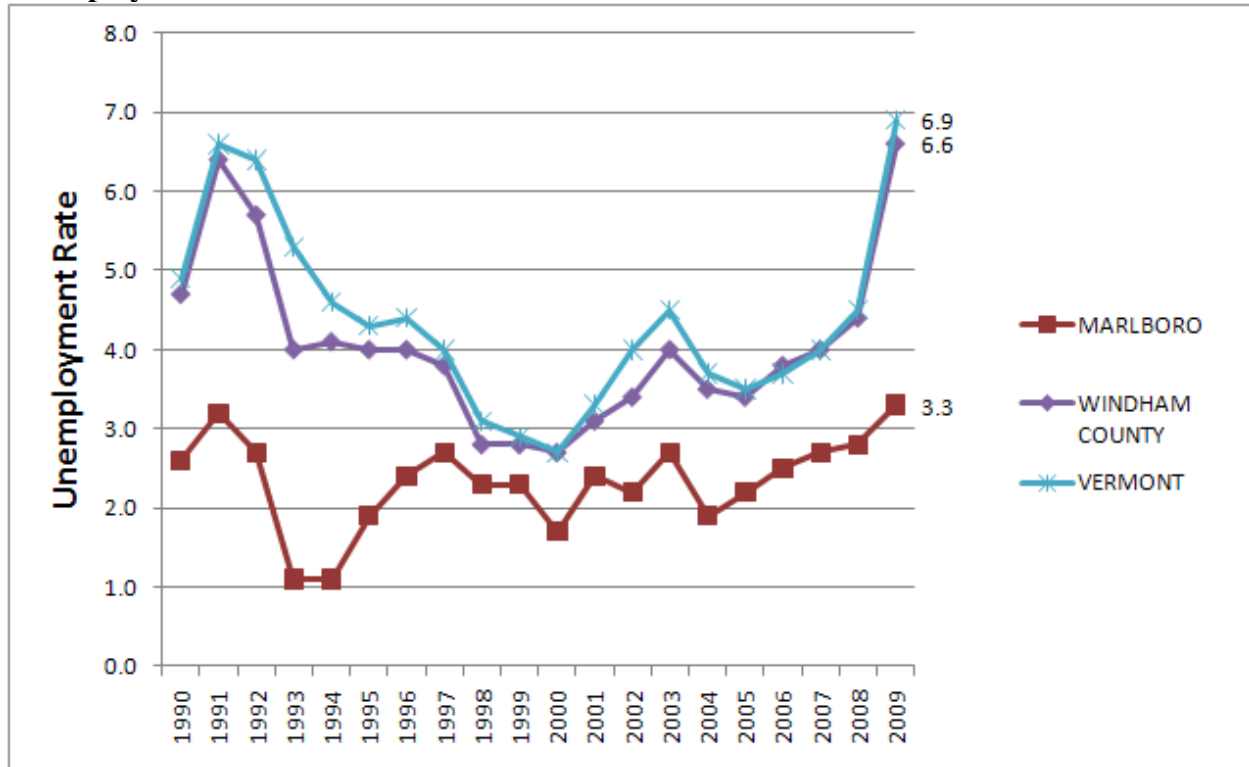
Source: US Census Bureau, Census of Population and Housing

Employment

Marlboro’s unemployment rate has been consistently lower than the county and state and was reported by the Dept. of Labor at a surprising lower 3.3 in 2009, even after many other towns’ rates were adjusted upward due to the recession.

The following tables show that the college, listed as Educational Services dominates both the types of jobs offered in town, as well as the types of jobs that many Marlboro residents have. Many other Marlboro residents work in the retail and services sectors, which are likely lower paying jobs.

Unemployment Rate



Source: Vermont Dept. of Labor

Industry Sectors in Which Marlboro Residents Work, 2008 vs 2002

<u>Jobs by Industry Type (2-digit NAICS)</u>				
	2008		2002	
	Count	Share	Count	Share
Agriculture, Forestry, Fishing and Hunting	1	0.3%	1	0.4%
Mining, Quarrying, and Oil and Gas Extraction	0	0.0%	0	0.0%
Utilities	1	0.3%	0	0.0%
Construction	6	1.9%	8	3.1%
Manufacturing	23	7.4%	16	6.3%
Wholesale Trade	7	2.2%	8	3.1%
Retail Trade	42	13.5%	29	11.3%
Transportation and Warehousing	14	4.5%	8	3.1%
Information	2	0.6%	4	1.6%
Finance and Insurance	8	2.6%	3	1.2%
Real Estate and Rental and Leasing	8	2.6%	5	2.0%
Professional, Scientific, and Technical Services	7	2.2%	5	2.0%
Management of Companies and Enterprises	0	0.0%	0	0.0%
Administration & Support, Waste Management and Remediation	7	2.2%	7	2.7%
Educational Services	69	22.1%	71	27.7%
Health Care and Social Assistance	42	13.5%	32	12.5%
Arts, Entertainment, and Recreation	1	0.3%	0	0.0%
Accommodation and Food Services	41	13.1%	42	16.4%
Other Services (excluding Public Administration)	12	3.8%	8	3.1%
Public Administration	21	6.7%	9	3.5%

Source: Local Employment Dynamics partnership of the US Census Bureau and Vermont Dept. of Labor

Industry Sectors of Jobs Located in Marlboro, 2008 vs 2002

<u>Jobs by Industry Type (2-digit NAICS)</u>				
	2008		2002	
	Count	Share	Count	Share
Agriculture, Forestry, Fishing and Hunting	0	0.0%	0	0.0%
Mining, Quarrying, and Oil and Gas Extraction	0	0.0%	0	0.0%
Utilities	0	0.0%	0	0.0%
Construction	24	8.8%	28	8.9%
Manufacturing	0	0.0%	2	0.6%
Wholesale Trade	1	0.4%	6	1.9%
Retail Trade	29	10.7%	12	3.8%
Transportation and Warehousing	3	1.1%	0	0.0%
Information	3	1.1%	0	0.0%
Finance and Insurance	0	0.0%	0	0.0%
Real Estate and Rental and Leasing	0	0.0%	0	0.0%
Professional, Scientific, and Technical Services	2	0.7%	0	0.0%
Management of Companies and Enterprises	0	0.0%	0	0.0%
Administration & Support, Waste Management and Remediation	2	0.7%	1	0.3%
Educational Services	177	65.1%	229	73.2%
Health Care and Social Assistance	0	0.0%	1	0.3%
Arts, Entertainment, and Recreation	0	0.0%	1	0.3%
Accommodation and Food Services	11	4.0%	11	3.5%
Other Services (excluding Public Administration)	10	3.7%	15	4.8%
Public Administration	10	3.7%	7	2.2%

Source: Local Employment Dynamics partnership of the US Census Bureau and Vermont Dept. of Labor

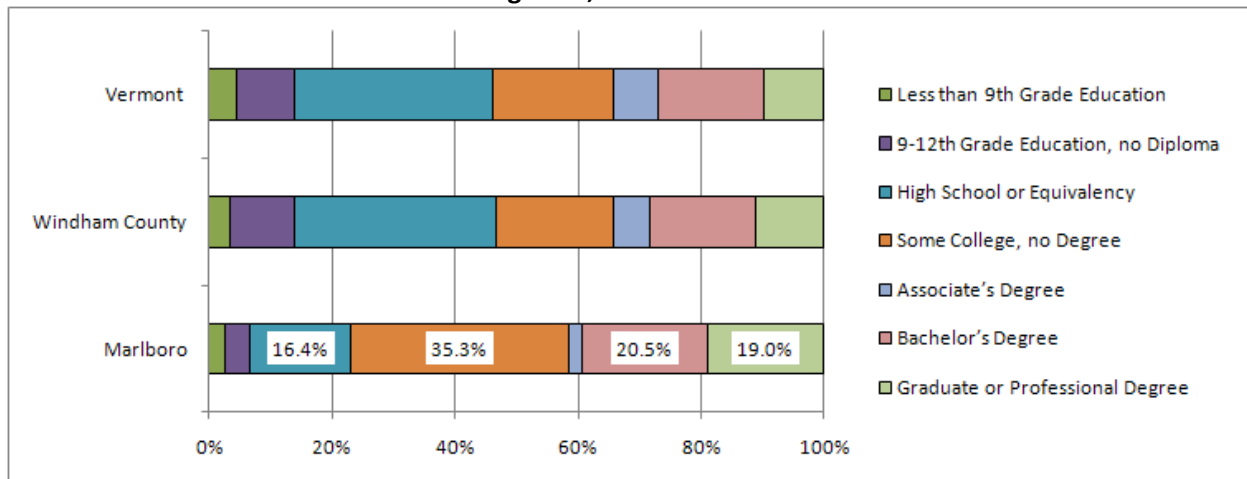
Education

Marlboro Elementary School Participation Information over Time	2004-2005	2005-2006	2006-2007	2007-2008	State of VT 2007-2008
Total School Enrollment	78	85	88	85	94,114
Attendance Rate	95.20%	94.10%	95.40%	N/AV	N/AV
Retention Rate	6.70%	7.50%	N/AV	N/AV	N/AV
Student/Teacher Ratio	8.96	9.44	8.46	9.2	11.13
Eligible Special Education	12.80%	8.20%	8.00%	9.40%	14.90%
Home Study (Number)	1	2	2	1	2,096

Source: VT Dept of Education School Report- 2008 (N/AV = Not Available)

The above table shows some general data for the Marlboro Elementary School. Below we can see that Marlboro had a lower proportion than the county and state of residents whose highest degree is from high school in 2000. The some college category was likely representative of the college population, and the higher proportions of those with college degrees could have been influenced by the college faculty.

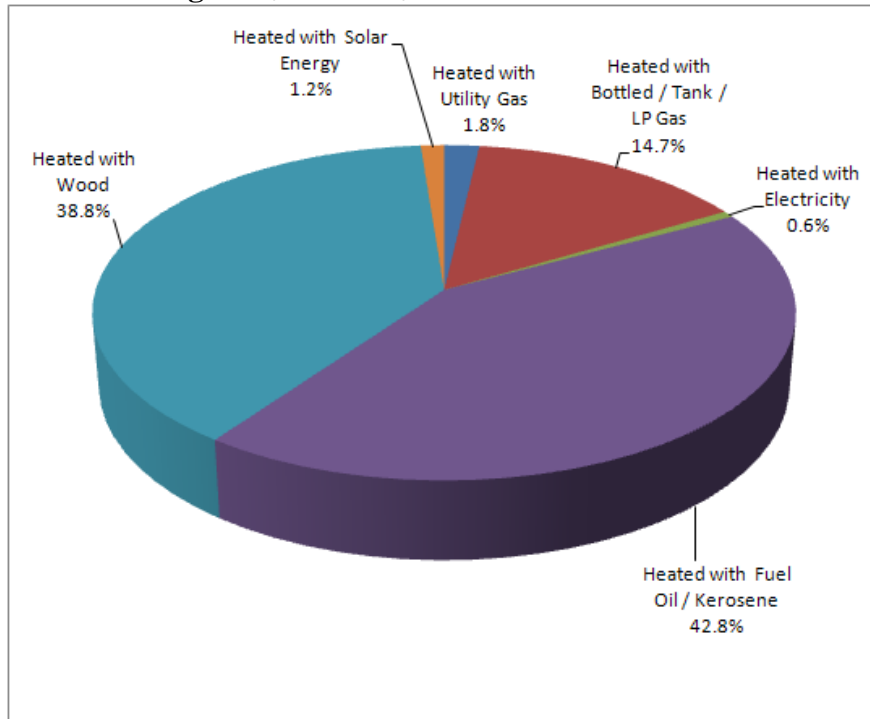
Educational Attainment – Residents Age 18+, Census 2000



Source: US Census Bureau, 2000 Census

Energy

Home Heating Fuel, Marlboro, 2000 Census



Source: US Census Bureau, 2000 Census

Crime

Reported Crimes in Marlboro	2000	2001	2002	2003	2004	2005	2006	2007	2008
Against People	N/AV	N/AV	N/AV	N/AV	N/AV	3	1	4	1
Against Property	N/AV	N/AV	N/AV	N/AV	16	22	36	13	30
Against Society	N/AV	N/AV	N/AV	N/AV	2	1	8	3	7
Total Crimes	51	57	60	40	18	26	45	20	38
N/AV = Not Available									

Source: Vermont Dept. of Public Safety, Vermont Crime Information Center

Crime per Capita	2000	2001	2002	2003	2004	2005	2006	2007	2008
Marlboro crimes per capita	5.2	5.9	6.2	4.1	1.8	2.7	4.6	2.0	3.9
Windham Co crimes per capita	14.4	16.3	12.6	12.8	5.3	5.1	6.0	5.5	4.8
VT crimes per capita	11.6	11.2	10.8	10.1	4.6	4.7	4.9	4.8	4.8

Source: Vermont Dept. of Public Safety, Vermont Crime Information Center

Transportation & Commuting

Typical of rural communities, Marlboro residents were more likely to have more vehicles at home than the county and state and tended to have slightly longer commutes in 2000. However, Marlboro residents were less likely to drive alone to work and more likely to walk to work or work at home.

Household Vehicle Ownership, Census 2000

Percent of Households with...	Marlboro	Windham County	Vermont
1 Vehicle	26.3	35.8	33.6
2 Vehicles	48.3	39.6	43.1
3 or more Vehicles	22.3	16.8	16.4
No Vehicles	3.1	7.8	6.8
<i>Average Number of Vehicles per Household</i>	<i>2.0</i>	<i>1.7</i>	<i>1.8</i>

Source: US Census Bureau, 2000 Census

Means of Travel to Work, Census 2000

Percent of Workers 16+ Who...	Marlboro	Windham County	Vermont
Drove to Work Alone	68.6	74.0	75.2
Carpooled to Work	6.1	11.4	11.9
Commuted via Public Transportation	0.7	0.7	0.7
Walked to Work	14.4	6.1	5.6
Worked at Home	10.2	6.8	5.7

Source: US Census Bureau, 2000 Census

Average Travel Time to Work (In Minutes), 1980-2000

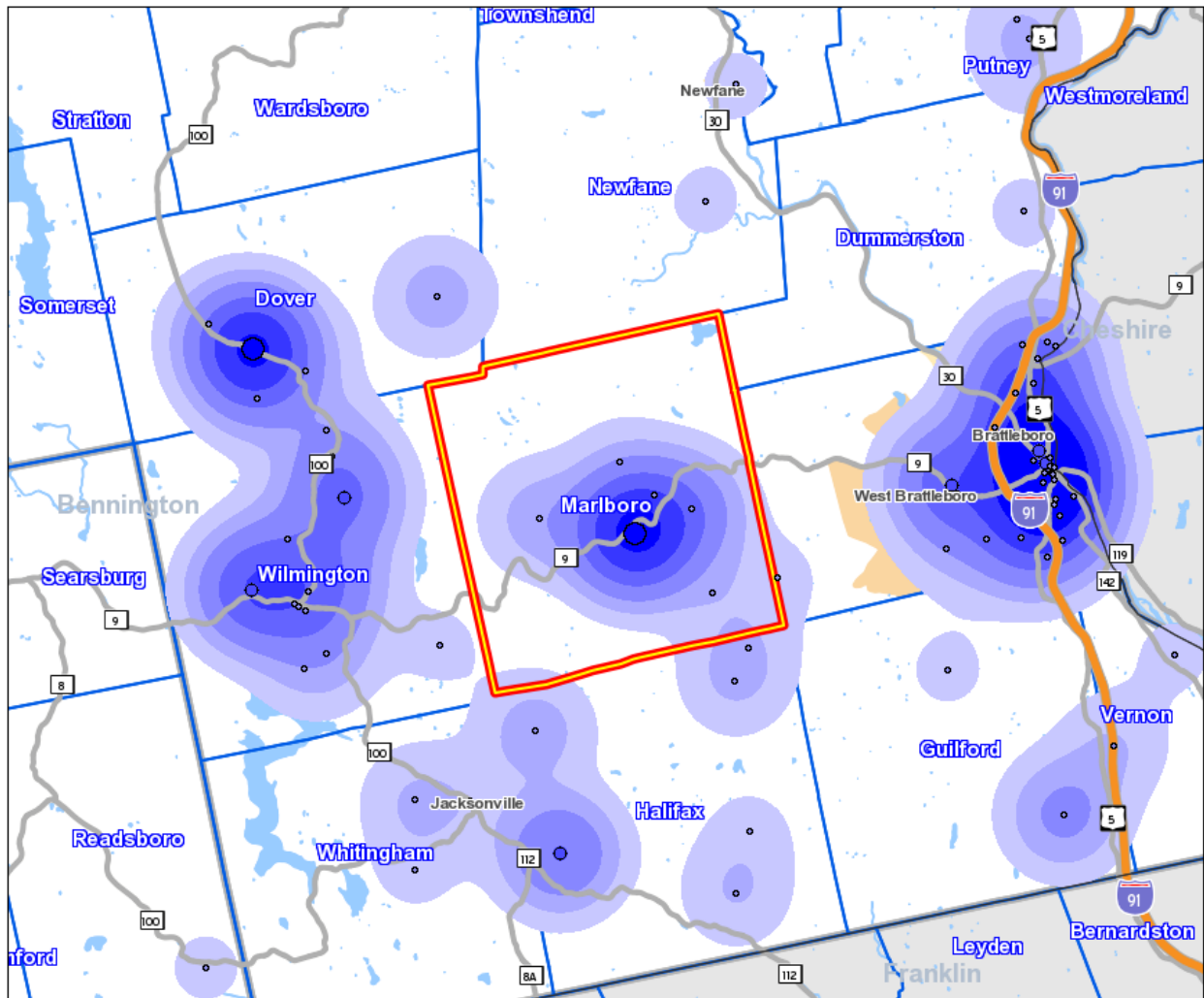
	1980	1990	2000	ACS 2006-2008 Average
Marlboro	19.0	16.8	23.5	<i>Expected Nov-Dec 2010</i>
Windham Co	16.0	16.6	20.5	20.2 ±1.0
Vermont	16.5	18.0	21.6	21.4 ±0.3

Source: US Census Bureau, Census of Population and Housing and American Community Survey

The Daily Commute – Where Marlboro Residents Work, 2008

This table and map show representations of the average daily commute of Marlboro residents in 2008. The plurality of Marlboro residents worked in Brattleboro, followed by Wilmington and then Marlboro itself. It is typical of rural communities like Marlboro to employ such a low percentage of its own resident workers.

Total All Jobs		
	2008	
	Count	Share
Total All Jobs	312	100.0%
Jobs in County Subdivisions Where Workers are Employed		
	2008	
	Count	Share
Brattleboro town (Windham, VT)	87	27.9%
Wilmington town (Windham, VT)	39	12.5%
Marlboro town (Windham, VT)	34	10.9%
Dover town (Windham, VT)	29	9.3%
Halifax town (Windham, VT)	17	5.4%
Rockingham town (Windham, VT)	11	3.5%
Hartford town (Windsor, VT)	8	2.6%
Putney town (Windham, VT)	7	2.2%
Williston town (Chittenden, VT)	6	1.9%
Vernon town (Windham, VT)	6	1.9%
All Other Locations	68	21.8%



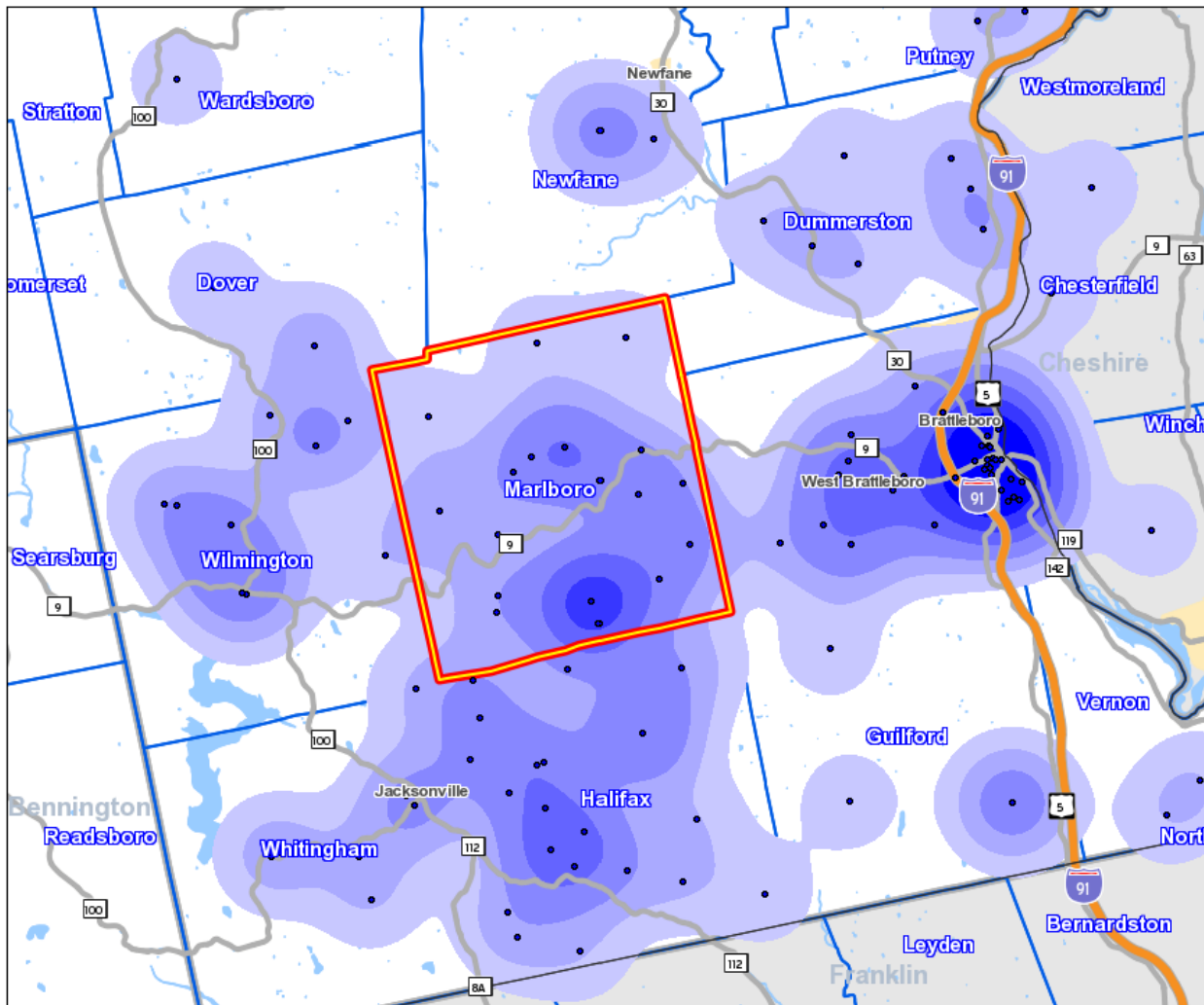
Source: Local Employment Dynamics partnership of the US Census Bureau and Vermont Dept. of Labor

The Marlboro Labor Shed – Where Workers Commute from to Work in Marlboro, 2008

This table and map show representations of where people came from to work in Marlboro in 2008. The plurality of daily workers came in from Brattleboro, followed by Marlboro itself. The total number of jobs in Marlboro in 2008, represented by this data as 272, when compared to the above table of Marlboro workers (312), shows that Marlboro exported more workers than it imported on any given day. The population of the town has likely lower during the day, than after the workday was over.

Total All Jobs		
	2008 Count	Share
Total All Jobs	272	100.0%

Jobs in County Subdivisions Where Workers Live		
	2008 Count	Share
Brattleboro town (Windham, VT)	53	19.5%
Marlboro town (Windham, VT)	34	12.5%
Halifax town (Windham, VT)	32	11.8%
Wilmington town (Windham, VT)	16	5.9%
Dummerston town (Windham, VT)	8	2.9%
Winchester town (Cheshire, NH)	7	2.6%
Whitingham town (Windham, VT)	7	2.6%
Keene city (Cheshire, NH)	7	2.6%
Guilford town (Windham, VT)	6	2.2%
Westminster town (Windham, VT)	4	1.5%
All Other Locations	98	36.0%



Source: Local Employment Dynamics partnership of the US Census Bureau and Vermont Dept. of Labor

Taxation

Marlboro Property Taxation	FY2002	FY 2003	FY 2004	FY 2005	FY 2006	FY 2007	FY 2008	FY 2009
Municipal Tax Rate (plus LAR & Highway) (per \$100)	0.46	0.25	0.55	0.55	0.32	0.28	0.37	0.34
Educational Tax Rate for Homesteads (per \$100)	N/AV	N/AV	N/AV	2.02	1.25	1.58	1.55	1.23
Educational Tax Rate for Non-Residential (per \$100)	N/AV	N/AV	N/AV	2.06	1.21	1.49	1.52	1.31
Common Level of Appraisal Ratio	N/AV	N/AV	N/AV	0.75	1.25	0.96	0.90	0.89
N/AV = Not Available								

Source: Vermont Dept. of Taxes

Natural Resources

Marlboro Land Stats	Marlboro	Windham Co	Vermont
Area of Land, Acres, 2000	25,811	504,960	5,920,640
Total Private & Public Conserved Lands, Acres, 1999	2,309	61,110	1,148,249
Percent Private & Public Conserved Lands, 1999	8.9%	12.1%	19.4%

Source: US Census Bureau and University of Vermont

Agriculture

Farm Inventory by County

	Number of farms			Acres of land in farms		
	2002	2007	% Change	2002	2007	% Change
Addison	676	773	14.3%	193,376	187,482	-3.0%
Bennington	228	226	-0.9%	41,126	36,580	-11.1%
Caledonia	505	531	5.1%	84,318	81,946	-2.8%
Chittenden	473	591	24.9%	76,679	83,382	8.7%
Essex	98	94	-4.1%	19,838	26,732	34.8%
Franklin	770	740	-3.9%	190,115	180,006	-5.3%
Grand Isle	99	114	15.2%	16,289	17,138	5.2%
Lamoille	317	300	-5.4%	53,820	49,749	-7.6%
Orange	680	683	0.4%	110,415	101,645	-7.9%
Orleans	583	635	8.9%	132,240	130,308	-1.5%
Rutland	623	658	5.6%	121,203	130,580	7.7%
Washington	425	444	4.5%	53,942	61,029	13.1%
Windham	397	428	7.8%	61,596	50,764	-17.6%
Windsor	697	767	10.0%	89,952	95,972	6.7%
Vermont	6,571	6,984	6.3%	1,244,909	1,233,313	-0.9%

Source: 2007 USDA Census of Agriculture

Market Value of Agricultural Products Sold by County

	Thousands of dollars			Average per farm (Dollars)		
	2002	2007	% Change	2002	2007	% Change
Addison	105,923	161,417	52.4%	156,691	208,819	33.3%
Bennington	7,818	10,518	34.5%	34,292	46,542	35.7%
Caledonia	23,789	31,542	32.6%	47,107	59,401	26.1%
Chittenden	28,109	33,662	19.8%	59,427	56,958	-4.2%
Essex	6,790	12,147	78.9%	69,283	129,222	86.5%
Franklin	115,435	160,619	39.1%	217,052	217,052	0.0%
Grand Isle	9,236	13,391	45.0%	149,915	117,463	-21.6%
Lamoille	13,732	21,594	57.3%	43,319	71,980	66.2%
Orange	32,008	43,292	35.3%	47,070	63,385	34.7%
Orleans	57,340	82,348	43.6%	98,354	129,682	31.9%
Rutland	23,987	35,286	47.1%	38,503	53,626	39.3%
Washington	14,739	21,511	45.9%	34,680	48,448	39.7%
Windham	18,321	21,408	16.8%	46,150	50,018	8.4%
Windsor	15,838	24,978	57.7%	22,723	32,566	43.3%
Vermont	473,065	673,713	42.4%	71,993	96,465	34.0%

Source: 2007 USDA Census of Agriculture