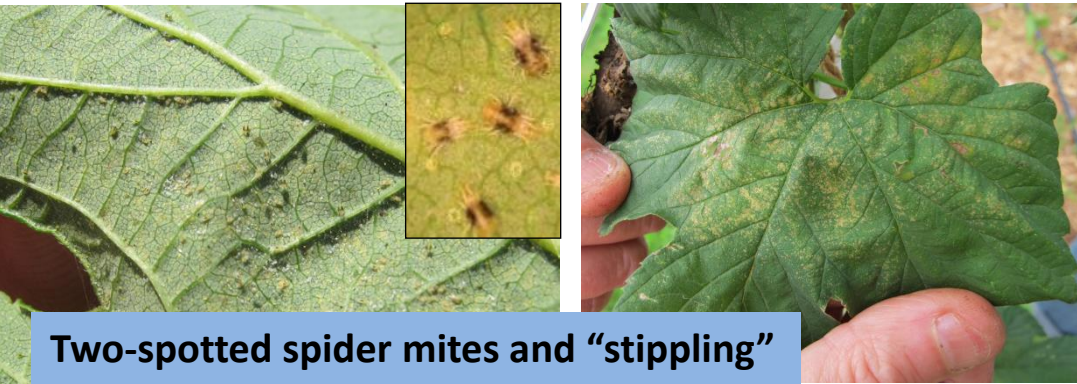


Hop Pests



Two-spotted spider mites and "stippling"



Potato leafhopper and "hopper burn"



Hop aphids and sooty mold



Downy mildew leaf lesions (A), basal (B), and areal (C) spikes



Hop Natural Enemies



Eggs



Larvae



Pupa



Adult

Lady beetles

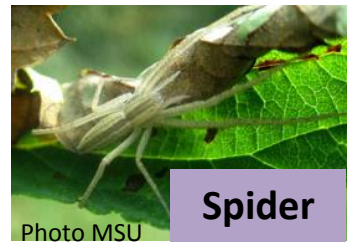
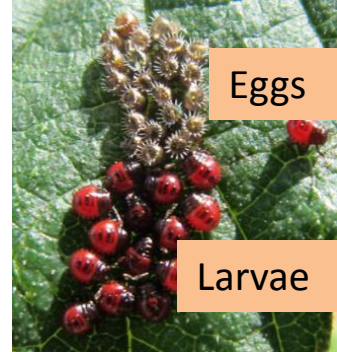


Photo MSU

Spider



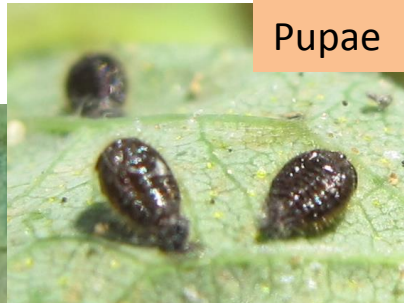
Eggs

Larvae

Spined soldier bug



Larvae



Pupae



Adult

Spider mite destroyers



Minute pirate bug



Long legged fly



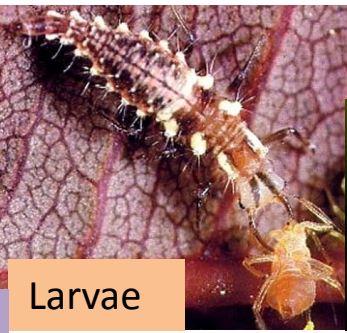
Hover fly



Egg

Photo MSU

Lacewings



Larvae



Adult



Parasitoid wasp