

An “Embarrassment of Riches”*

Updates from the 2010 Census Bureau State Data Center Conference

Will “Chip” Sawyer
Vermont State Data Center
at the Center for Rural Studies &
University of Vermont

*VT Spatial Data Partnership Webinar
October 27, 2010*



Census Bureau Data

- Updates from this Year's State Data Center Meeting:
 - 2010 Census release schedule
 - ACS ramped up to 5-year estimates
 - Plans for CTPP
 - *On the Map* update



December 2010

A Month of Data!

- First 5-year Estimates from the ACS
 - Down to block group level, including towns
- U.S. Demographic Estimates
 - From Population Estimates program
- 2010 Census State Population Counts
 - By Dec 31
 - First 2010 Census data!



Review of Changes in 2010

2010 Census

- “Short Form” Only
- Counts of People and Housing Units
- Basic Demographics

American Community Survey

- Since 2005
- Annual Data Releases
- Replacing the “Long Form”
- Characteristics of the Population: Income, Poverty, Transportation, Disability, Employment, Housing Conditions, etc.



The 2010 Census

Collected April-July 2010

- US and VT mail participation matched 2000

74% and 69%



The 2010 Census

Release Schedule Summary:

- by Dec 31, 2010: State Population Counts
- Feb-Mar 2011: Redistricting data down to block level
 - First release of new block geos! (TIGER)
- May 2011: Demographic Profiles
- Jun-Aug 2011: Full data down to block level
- Oct 2012: Urban/Rural delineations
- Jul-Aug 2013: CBSAs redefined



The 2010 Census

- Data Release Schedule:
 - <http://www.census.gov/population/www/censusdata/c2010products.pdf>
- TIGER Shapefile Release Schedule:
 - <http://www.census.gov/geo/www/tiger/tgrshp2010/tgrshp2010.html>



American Community Survey

- Annual Data Releases
- Replaces the Census “Long Form”
- Income, Poverty, Transportation, Disability, Employment, Ancestry, Education, Housing Conditions...
- Year-long enumeration of 3⁺ million U.S. households.
 - Trying to increase to 3.5 million
- Focus on Characteristics, not counts.



American Community Survey

Some Key Differences

- Margins of Error Included
- “Residence Rule” = more than 2 months
- Smaller geographies receive multi-year estimates
- Suppression of “unreliable” tables
 - Purportedly not for 5-year data



American Community Survey

Data in Multi-Year Period Estimates

- Combine more than one year's sample
- **Not Averages!**

Data Product	Population Threshold	Year of Data Release							
		2006	2007	2008	2009	2010	2011	2012	2013
1 - year Estimates	65,000+	Year(s) of Data Collection							
		2005	2006	2007	2008	2009	2010	2011	2012
3 - year Estimates	20,000+			2005- 2007	2006- 2008	2007- 2009	2008- 2010	2009- 2011	2010- 2012
5 - year Estimates	All Areas*					2005- 2009	2006- 2010	2007- 2011	2008- 2012



American Community Survey

Margins of Error

Median Age, Vermont, 2008

	Vermont	
	Estimate	Margin of Error
Median age --		
Total:	41.5	+/-0.3
Male	40.3	+/-0.3
Female	42.8	+/-0.4

Source: U.S. Census Bureau, 2008 American Community Survey

- Data actually in ranges
 - Allow tests for statistical significance



American Community Survey

The Residence Rule

- Decides where you are counted



How many people are living or staying at this address?

- **INCLUDE** everyone who is living or staying here for more than 2 months.
- **INCLUDE** yourself if you are living here for more than 2 months.
- **INCLUDE** anyone else staying here who does not have another place to stay, even if they are here for 2 months or less.
- **DO NOT INCLUDE** anyone who is living somewhere else for more than 2 months, such as a college student living away or someone in the Armed Forces on deployment.

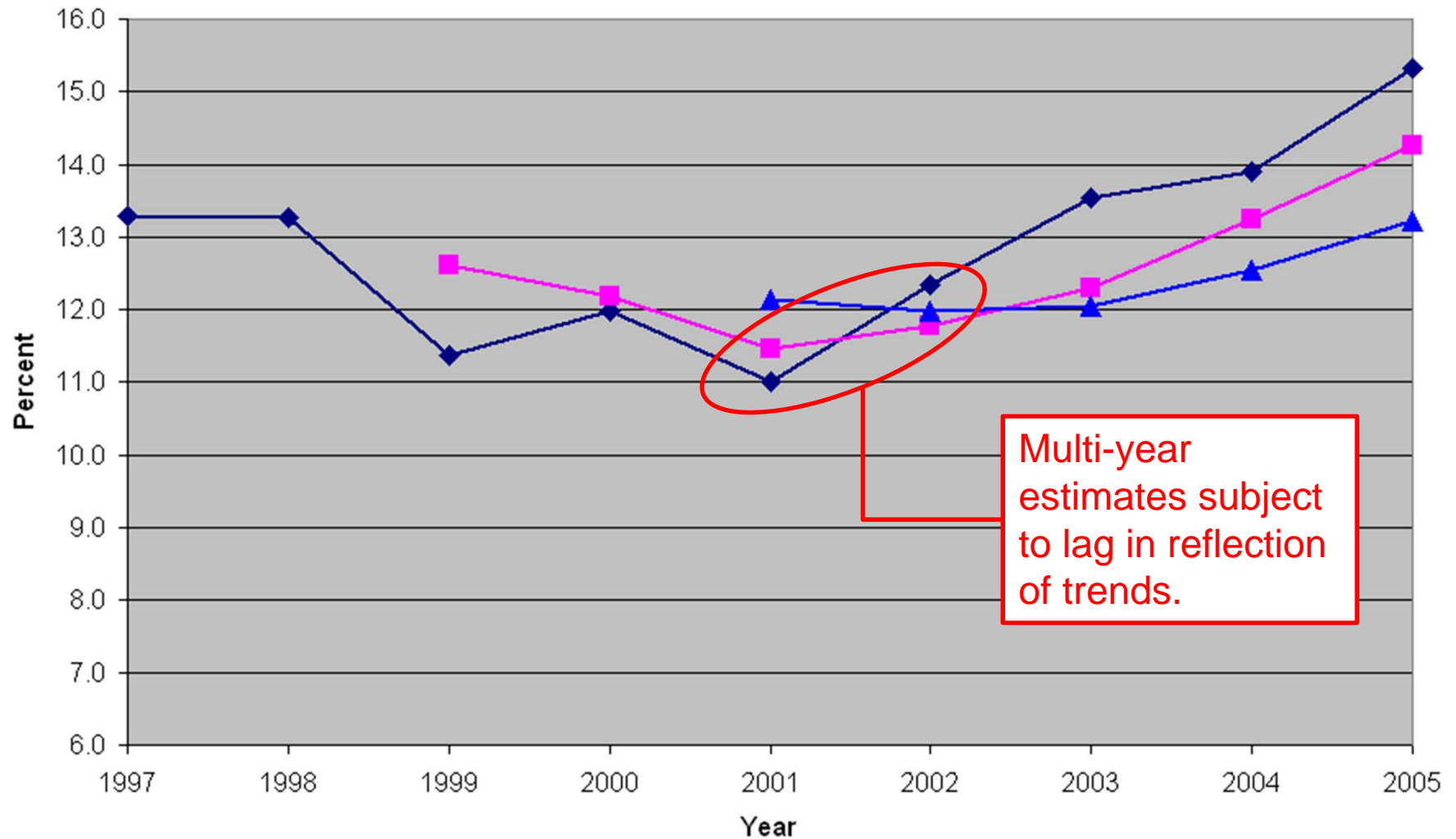
Number of people

- Includes seasonal residents

ACS Test Site Data

Courtesy of Nebraska State Data Center

Percentage of Omaha Population in Poverty (Individuals)



Source: American Community Survey,
U.S. Census Bureau, 1997-2005

◆ Single-year estimates ■ 3-year estimates
▲ 5-year estimates

Note: The ACS only surveyed households and does not include the group quarters population.



Accessing the Data

- *Vermont Indicators Online & Vermont Housing Data* websites
 - Target to serve ACS 5-year data beginning in Jan-Feb.
- *American FactFinder*
 - Direct source for 2010 and ACS data
 - **Redesign in progress!**
 - Set to debut Jan 2011

AMERICAN FactFinder

New Look, New Tools, Easier Access

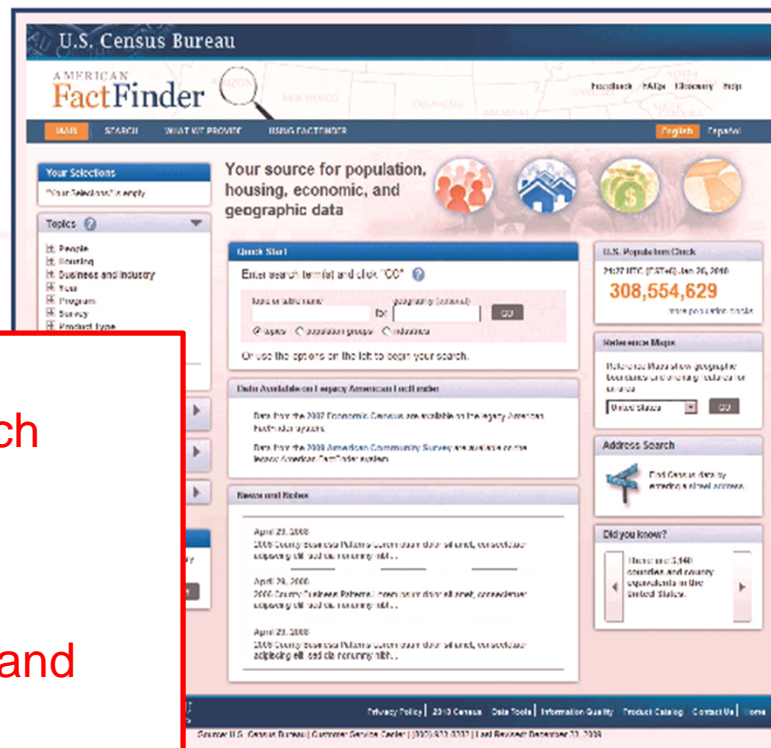
A new look with improved functionality is coming to American FactFinder, the Census Bureau's online tool for accessing a wide variety of population, economic, geographic, and housing information about the United States.

Available January 2011

- Searches using any of the
 - Topics
 - Geographies
 - Population groups
 - Industry codes
- Fast search results
- Enhanced table manipulation
- Advanced mapping capabilities

Emphasis on:

- Web 2.0-style search functionality
- Table manipulation (limited)
- Mapping transition and features



factfinder.census.gov

American FactFinder provides quick access to data from the Decennial Census, American Community Survey, Puerto Rico Community Survey, Population Estimates Program, Economic Census, and Annual Economic Surveys.

U S C E N S U S B U R E A U

Helping You Make Informed Decisions

New Table and Mapping Features Available January 2011

Table Features:

- Customize table views
- Sort and filter columns of a table
- Transpose rows and columns
- Save customized tables

Mapping Features:

- Select geographies from the table
- Create maps from a table
- Place labels and markers on the map
- Download maps as PDFs

Preview the new American Factfinder in the fall of 2010, and subscribe to get the latest updates at factfinder.census.gov.



Results

Click 'Back to Search' to select other tables or geographies.

Table ID: C06003

Place of Birth by Sex in the United States

Universe: Total Population in the United States

2005-2007 American Community Survey 3-Year Estimates

Table View | Map View

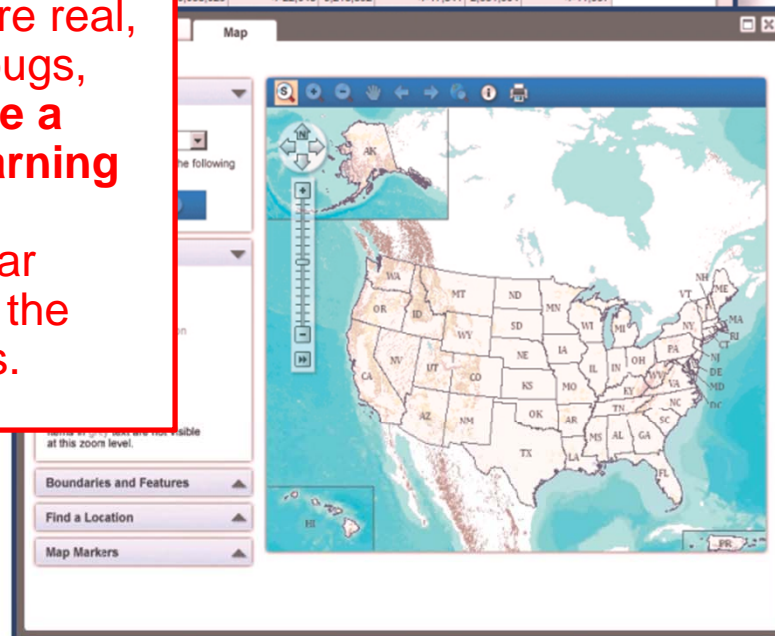
Actions: Modify Table | Bookmark | Download | Create a Thematic Map

View Table Notes

	Alabama	Florida	Georgia	South Carolina
	Estimate	Margin of Error	Estimate	Margin of Error
	8,014,927	*****	9,331,515	*****
	8,841,365	+/-2,036	4,587,486	+/-2,841
	9,173,562	+/-2,035	4,744,029	+/-2,841
	8,058,029	+/-22,048	5,218,892	+/-17,841
				2,631,604
				+/-11,997

Test Drive in October 2010:

- The improvements are real, but there are some bugs, and **there will still be a substantial user learning curve.**
- No sign of a multi-year trending feature, like the value-added VT sites.





Accessing the Data

Statistical Calculator Planned...

- For using and calculating margins of error
 - Compare for significant difference
 - Create MOEs from new sums, ratios, proportions, etc.
- Inclusion and nature of interface at least 2 years out.

Rumor of MOE tables for 2000 Census sample data.

- For use in comparing to ACS
- Also about 2 years out



Census Transportation Planning Products

CTPP

- Residence and workplace profiles
- Worker flow (very popular)
- Allowed analyses like this:



Franklin County Commuting Data, 2000

County to County		
County of Work	Count	Percent
Franklin Co.	14,420	63.9
Chittenden Co.	7,292	32.3
Lamoille Co.	280	1.2
Out of State	223	1.0
Washington Co.	144	0.6
Orleans Co.	61	0.3
Addison Co.	59	0.3
Grand Isle Co.	49	0.2
Caledonia Co.	18	0.1
Rutland Co.	16	0.1
Orange Co.	13	0.1
Windsor Co.	3	0.0
Bennington	0	0.0
Essex	0	0.0
Windham	0	0.0
Total	22,578	100.0
<i>Commute Outside County</i>	<i>8,158</i>	<i>36.1</i>

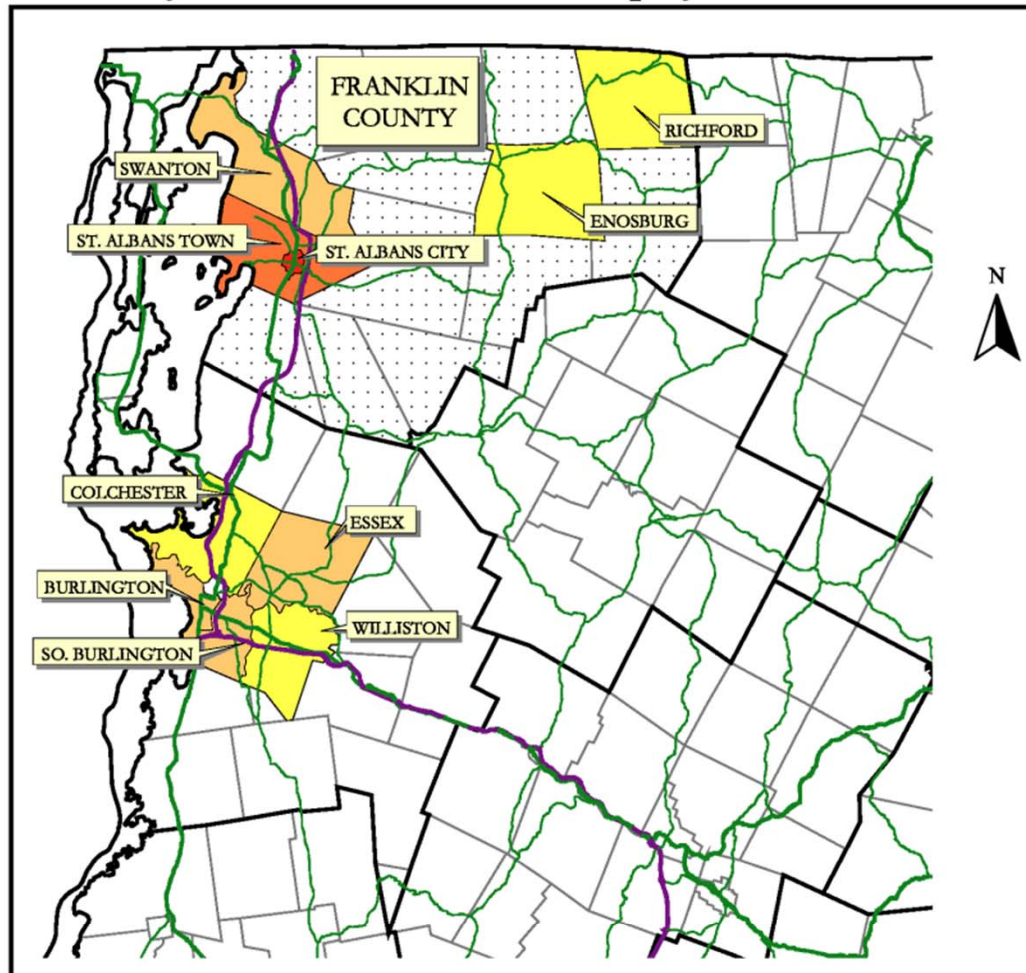
Towns where Top 75% of Resident Workforce is Employed			
Workplace	Count	%	Cumulative %
St. Albans city Franklin Co.	5,043	22.3	22.3
St. Albans town Franklin Co.	2,489	11.0	33.4
Essex town Chittenden Co.	1,883	8.3	41.7
Swanton town Franklin Co.	1,686	7.5	49.2
Burlington city Chittenden Co.	1,560	6.9	56.1
South Burlington city Chittenden Co.	1,217	5.4	61.5
Enosburg town Franklin Co.	1,057	4.7	66.1
Williston town Chittenden Co.	806	3.6	69.7
Colchester town Chittenden Co.	692	3.1	72.8
Richford town Franklin Co.	690	3.1	75.8

Source: U.S. Census Bureau, 2000 Census of Population and Housing



FRANKLIN COUNTY

Commuter Flow to Towns Where Top 75 Percent of County Resident Workforce Is Employed



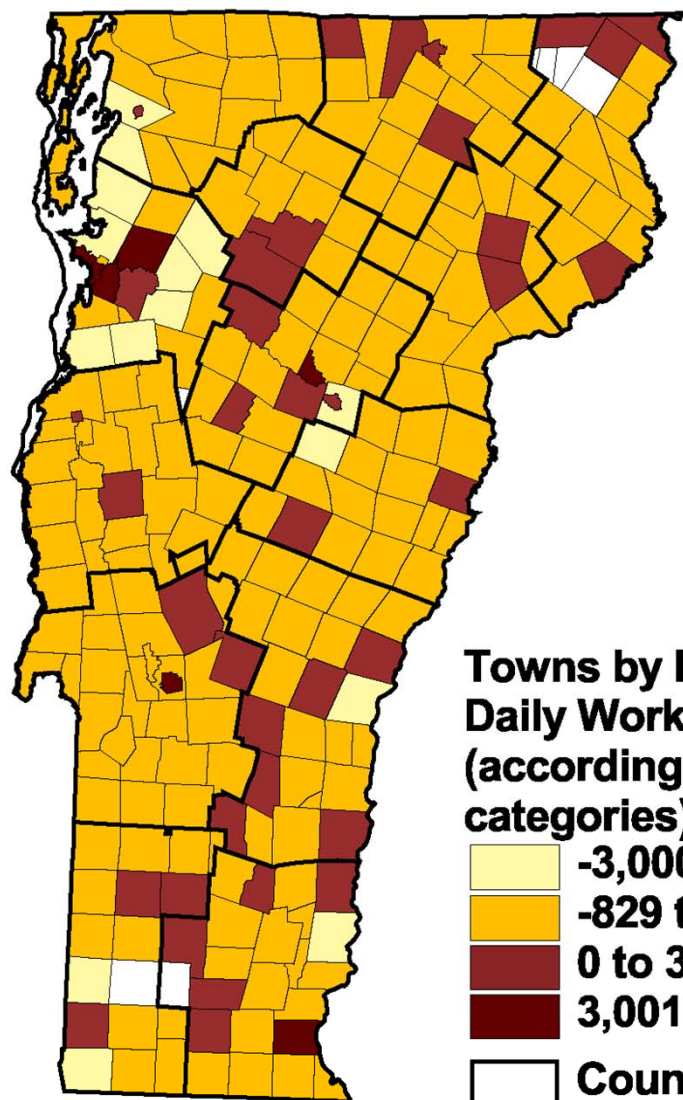
Percent of Franklin County
Resident Workforce Employed

- 3.1 - 4.7%
- 4.7 - 8.3%
- 11.0% (St. Albans Town)
- 22.3% (St. Albans City)

SOURCES:

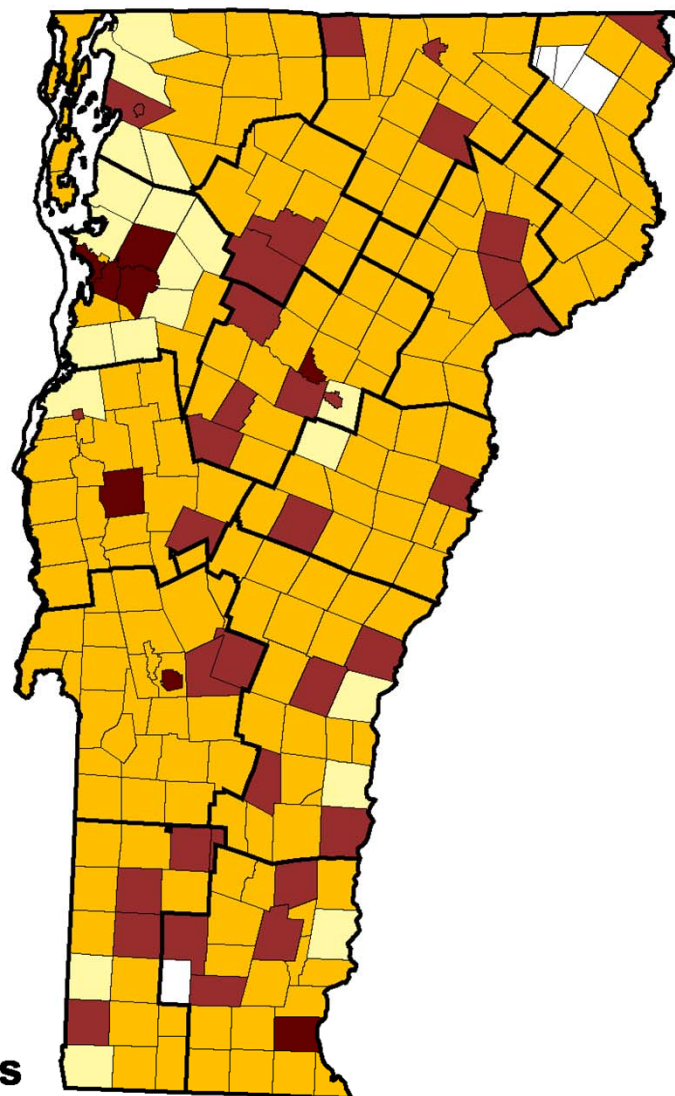
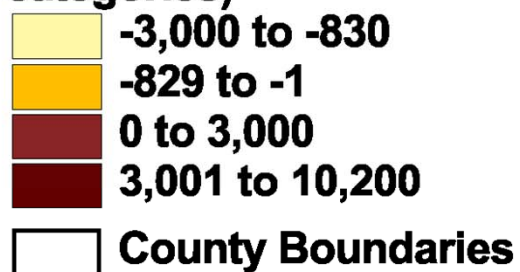
Commuting Data: U.S. Census Bureau, 2000 Census of Population and Housing
Road Centerlines: Vermont Agency of Transportation
Political Boundaries: Vermont Center for Geographic Information

- Interstate
- U.S. Highways
- State Highways
- Counties
- Towns
- Franklin County



1990

**Towns by Net Imported
Daily Workers
(according to 1990
categories)**



2000

SOURCES

Worker Data: U.S. Census Bureau, 1990 and 2000 Censuses of Population and Housing
Political Boundaries: Vermont Center for Geographic Information

3-Year Census Transportation Planning Products Release



What is the CTPP?

*Now a set of special tabulations from the American Community Survey tailored for the data needs of transportation planners

*Produced by the Census Bureau, sponsored and owned by American Association of State Highway Transportation Officials (AASHTO)

(Sawyer: Incorporation of new ACS data had been a moving target)

Slide prepared by U.S. Census Bureau and CTPP partners.

3-year CTPP Data Product



Available Late Nov. 2010
Based on ACS 2006, 2007, 2008
20,000 Pop. Areas

<http://ctpp.transportation.org>

Slide prepared by U.S. Census Bureau and CTPP partners.



The 3-year Product Design

Based on 2000 Geography

Nation (US Total)
State
State-County
State-County-MCD
State-Place
State-PUMA
State-POW PUMA
Metropolitan Statistical Area
MSA – EACH Principal City

Product Structure

3-Parts

Part 1- Place of Residence

Part 2- Place of Work

Part 3- Flows between
Home and Work

Product documentation available at:

http://ctpp.transportation.org/Documents/CTPP_custom_tabulations_based_on_3yracs2006_2008.xls

3-year CTPP Product Summary



- Based on CTPP 2000 Tables
- Many NEW Univariate Tables
- More Age, Race, Household-level Tables
- Several Flow Tables Included
- Tables Include MOEs
- Reduced Number of Crosstabs with Mode
 - Travel time
 - Household income
 - Vehicle availability
 - Age
 - Time leaving home
- Tables will have Suppression
 - Means based on at least 3 values
 - At least 3 records in Flow

Slide prepared by U.S. Census Bureau and CTPP partners.



Accessing the 3-year data

- All tables available for download online
 - Free, but you must register
 - Online tutorials available
- User Friendly Features:
 - Search for tables by keyword
 - Click on a map to select geography
- Early release of county-to-county flows:
<ftp://ftp.camsys.com/temp/outgoing/CTPP/New%20CTPP%20ACS/>

Slide prepared by U.S. Census Bureau and CTPP partners.



Other Forthcoming Commuting Products based on the ACS

- County-to-county home-to-work flows based on 5-year ACS 2006-2010
 - Produced to support development of new metro area definitions
- Local-based worker flow tables WILL be produced with 06-10 ACS.
 - design undergoing reviews
- Release uncertain but expected in 2013 or before

Slide prepared by U.S. Census Bureau and CTPP partners.



Key CTPP Contact

- **Penelope Weinberger**
AASHTO
CTPP Program Manager
202-624-3556
pweinberger@aashto.org

<http://ctpp.transportation.org>

Slide prepared by U.S. Census Bureau and CTPP partners.



LEHD *On the Map*

U.S. Census Bureau **LED OnTheMap**

Search Base Map Analysis Results

Labor Shed Map and Report --
Where Workers Live who are
Employed in the Selection Area

Overlay Controls

2008

Color Key	<input checked="" type="checkbox"/>
Points	<input checked="" type="checkbox"/>
Thermals	<input checked="" type="checkbox"/>
Selection Outline	<input checked="" type="checkbox"/>
Selection Fill	<input type="checkbox"/>

Animate

Points:	<input checked="" type="checkbox"/>	Animate
Thermals:	<input checked="" type="checkbox"/>	

[Zoom to Selection](#)

Output Options:

Click "Output Options" to hide.

View Report As:

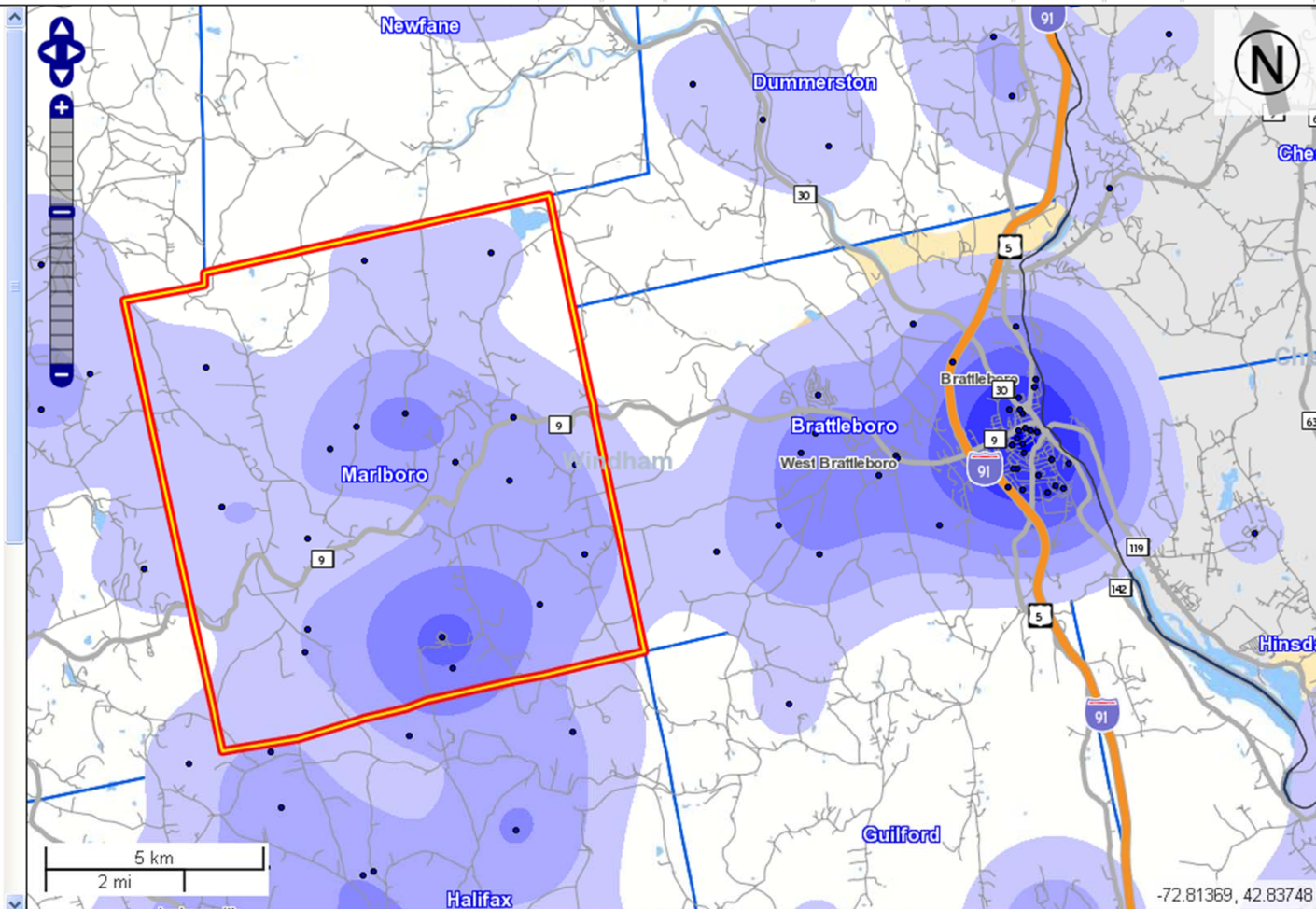
- [HTML](#)
- [Excel](#)
- [PDF \(Report Only\)](#)
- [PDF \(Map and Report\)](#)

Get Overlays As:

- [Shapefiles \(All Overlays\)](#)
- [DBF \(Selection Area Blocks\)](#)
- [KML \(All Overlays\)](#)

Legends (All Jobs)

- 2008
- 1 - 10 Jobs



U.S. CENSUS BUREAU
Helping You Make Informed Decisions

Home | Census 2000 | Subjects A to Z | FAQs | Search | Data Tools | Catalog | Quality | Privacy Policy | Policies | Contact Us
Source: U.S. Census Bureau, Center for Economic Studies | e-mail: ces.local.employment.dynamics@census.gov

Done

Internet

100%



LEHD *On the Map*

Updates:

- Version 5 release set for Dec 13, 2010.
 - Possible additions:
 - Race & Ethnicity, Educational Attainment
 - Spoke and Radar charts to show direction and magnitude of commuting
- MA and NH are close to joining LEHD partnership
 - We'll finally have their data integrated!



Web Links

- *American FactFinder*
 - <http://factfinder.census.gov>
- *LEHD On the Map*
 - <http://lehd.did.census.gov/led/datatools/onthemap4.html>
- *American Community Survey*
 - <http://www.census.gov/acs>
- *Census Transportation Planning Products*
 - <http://ctpp.transportation.org>



Thank you!

...*resources* and *expertise* to support
rural people and communities

Will “Chip” Sawyer
Vermont State Data Center
at the UVM Center for Rural Studies
crs.uvm.edu/census
802-656-0892
wsawyer@uvm.edu
U.S. Census Bureau: census.gov

Presentation Download Available at uvm.edu/crs under “Reports and
Presentations”

This presentation contains materials based upon work supported by the U.S. Department of Agriculture, under Award No. 2010-34269-20972. Any opinions, findings, conclusions, or recommendations expressed in this publication are those of the author(s) and do not necessarily reflect the views of the U.S. Department of Agriculture.