

# Considerations of Scale and Other Community Attributes in Vermont Community Development.

**Michael Moser**

**Coordinator, VT State Data Center**

**Research Specialist, Center for Rural Studies**

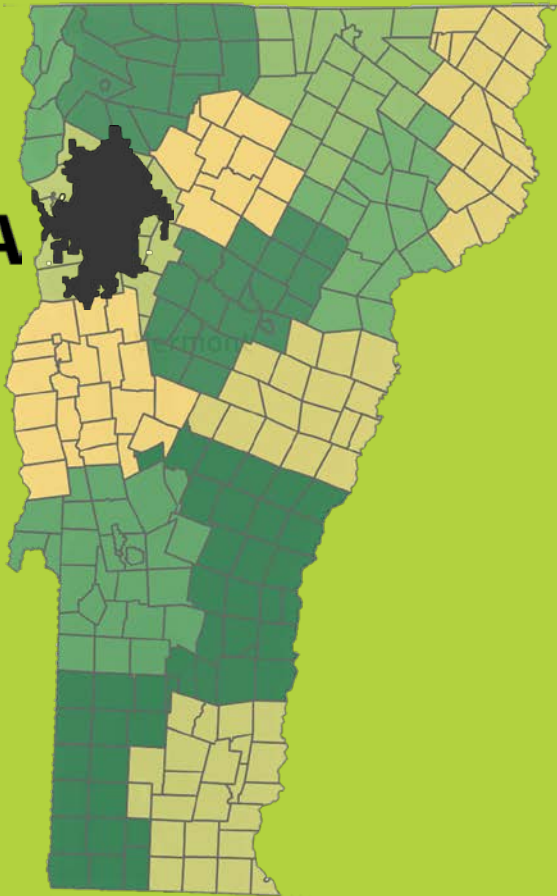
**[mmoser@uvm.edu](mailto:mmoser@uvm.edu)**



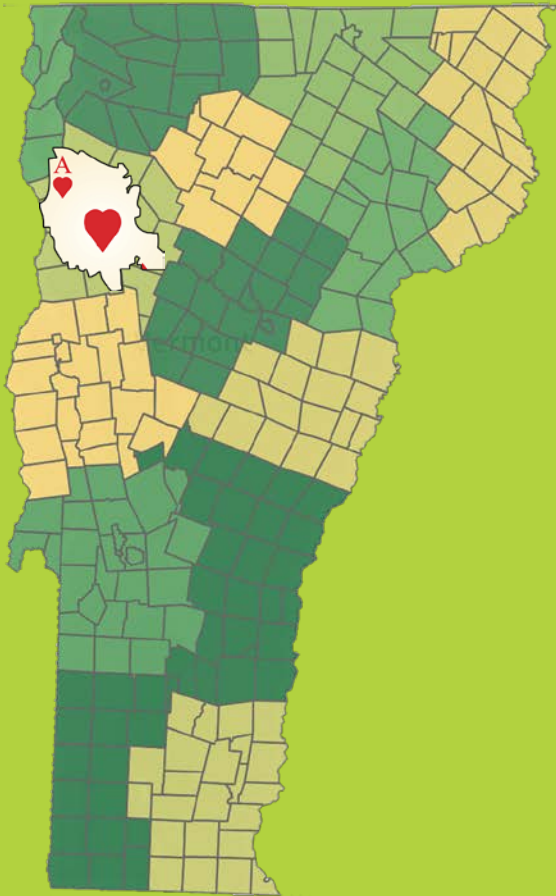
The University of Vermont

# Vermont Population in Context

**Springfield, MA**



**Las Vegas, NV**

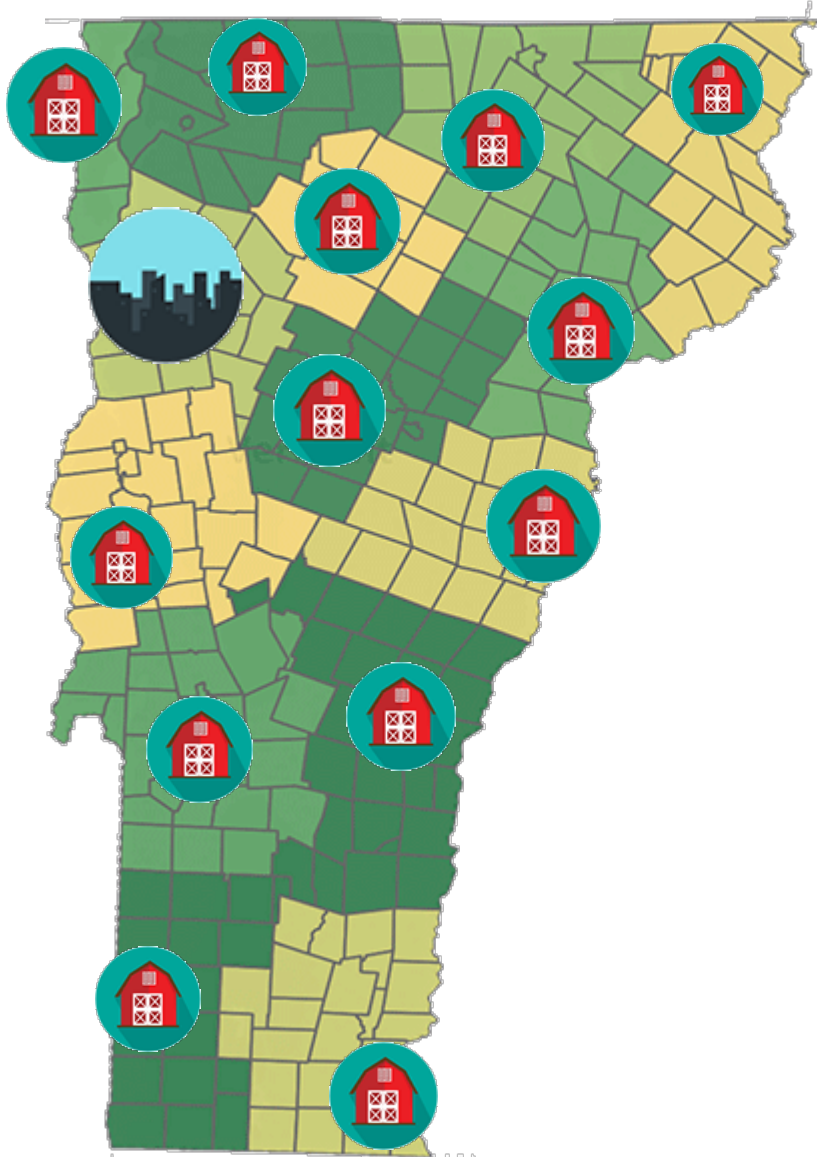


160,000  
people  
here



**Approximately one  
quarter of Vermont's  
Population resides in  
just one County.**

# Vermont Towns in Context



- VT has just eight towns with Populations over 10,000 (about 3% of all towns)
- VT has 92 towns with populations under 1,000 (about a third of all towns)
- Vermont's average town population is about 2,500 residents.

# Thank You



# The Genuine Progress Indicator (and “other measures”)

**Jon D. Erickson**

Rubenstein School

Gund Institute

@jon\_d\_erickson



The University of Vermont

# Vermont Act 113

## **An act relating to the genuine progress indicator**

- (a) Purpose.** The purpose of the genuine progress indicator (“GPI”) is to measure the state of Vermont’s economic, environmental, and societal well-being as a supplement to the measurement derived from the gross state product and other existing statistical measurements.
- (b) Definition.** The GPI is an estimate of the net contributions of economic activity to the well-being and long-term prosperity of our state’s citizens, calculated through adjustments to gross state product that account for positive and negative economic, environmental, and social attributes of economic development.
- (c) Intent.** It is the intent of the general assembly that once established and tested, the GPI will assist state government in decision-making by providing an additional basis for budgetary decisions, including outcomes-based budgeting; by measuring progress in the application of policy and programs; and by serving as a tool to identify public policy priorities, including other measures such as human rights.

# Vermont Act 113

## An act relating to the genuine progress indicator

- (a) Purpose.** The purpose of the genuine progress indicator (“GPI”) is to measure the state of Vermont’s economic, environmental, and societal well-being as a supplement to the measurement derived from the gross state product and other existing statistical measurements.
- (b) Definition.** The GPI is an estimate of the net contributions of economic activity to the well-being and long-term prosperity of our state’s citizens, calculated through adjustments to gross state product that account for positive and negative economic, environmental, and social attributes of economic development.
- (c) Intent.** It is the intent of the general assembly that once established and tested, the GPI will assist state government in decision-making by providing an additional basis for budgetary decisions, including outcomes-based budgeting; by measuring progress in the application of policy and programs; and by serving as a tool to identify public policy priorities, including other measures such as human rights.

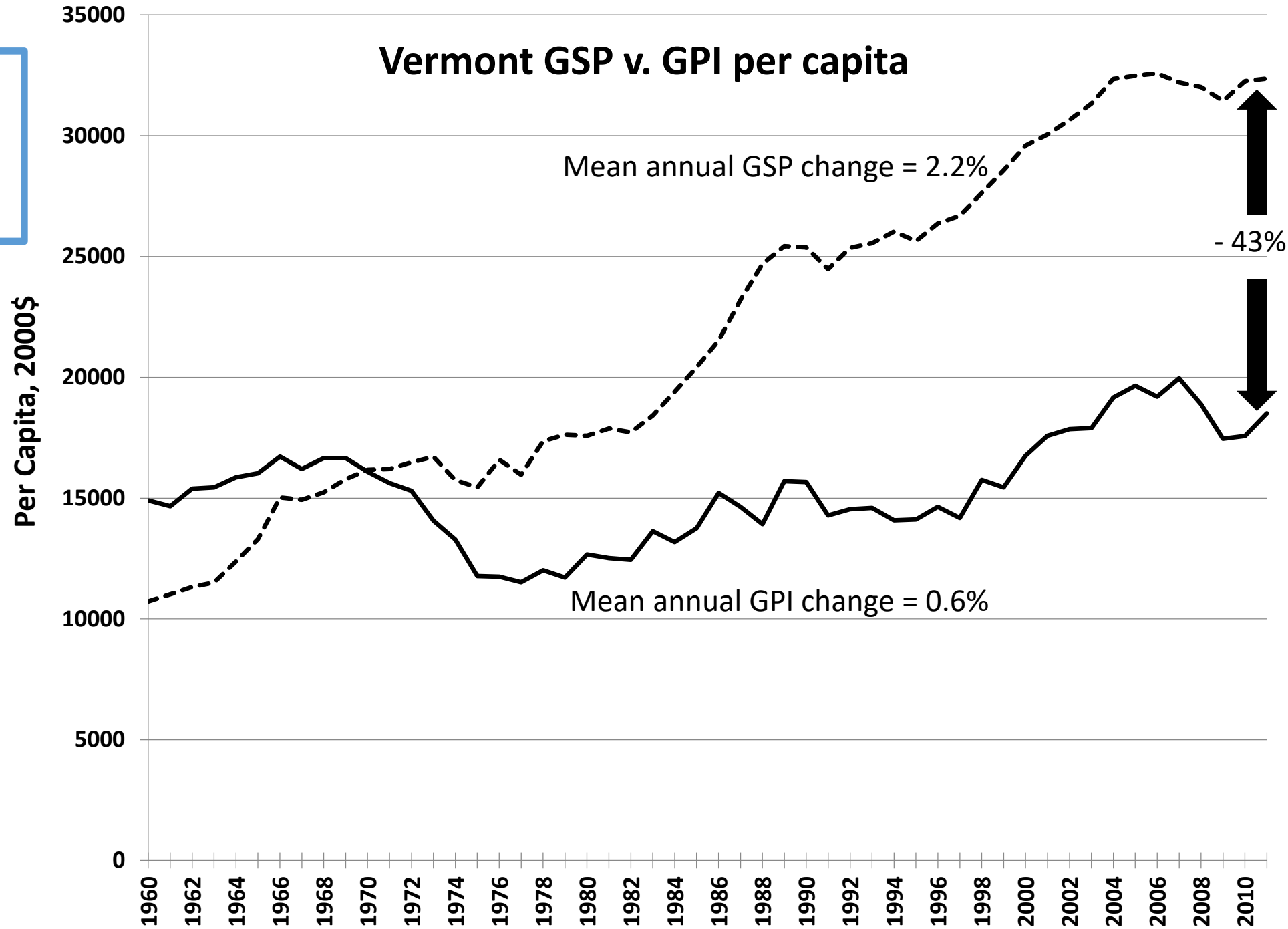


- US & other national studies
- Vermont/Maryland method
- Executive action (MD)  
Legislative action (VT)
- State GPI coalition
- 50-state GPI study
- GPI 2.0





**Annual Updates  
VT/MD Method  
2012-2018**



# Vermont 2020

## Comprehensive Economic Development Strategy



### **MISSION:**

Improve the economic well-being and quality of life of Vermonters while maintaining our natural resources and community values.

### **OVERARCHING GOAL:**

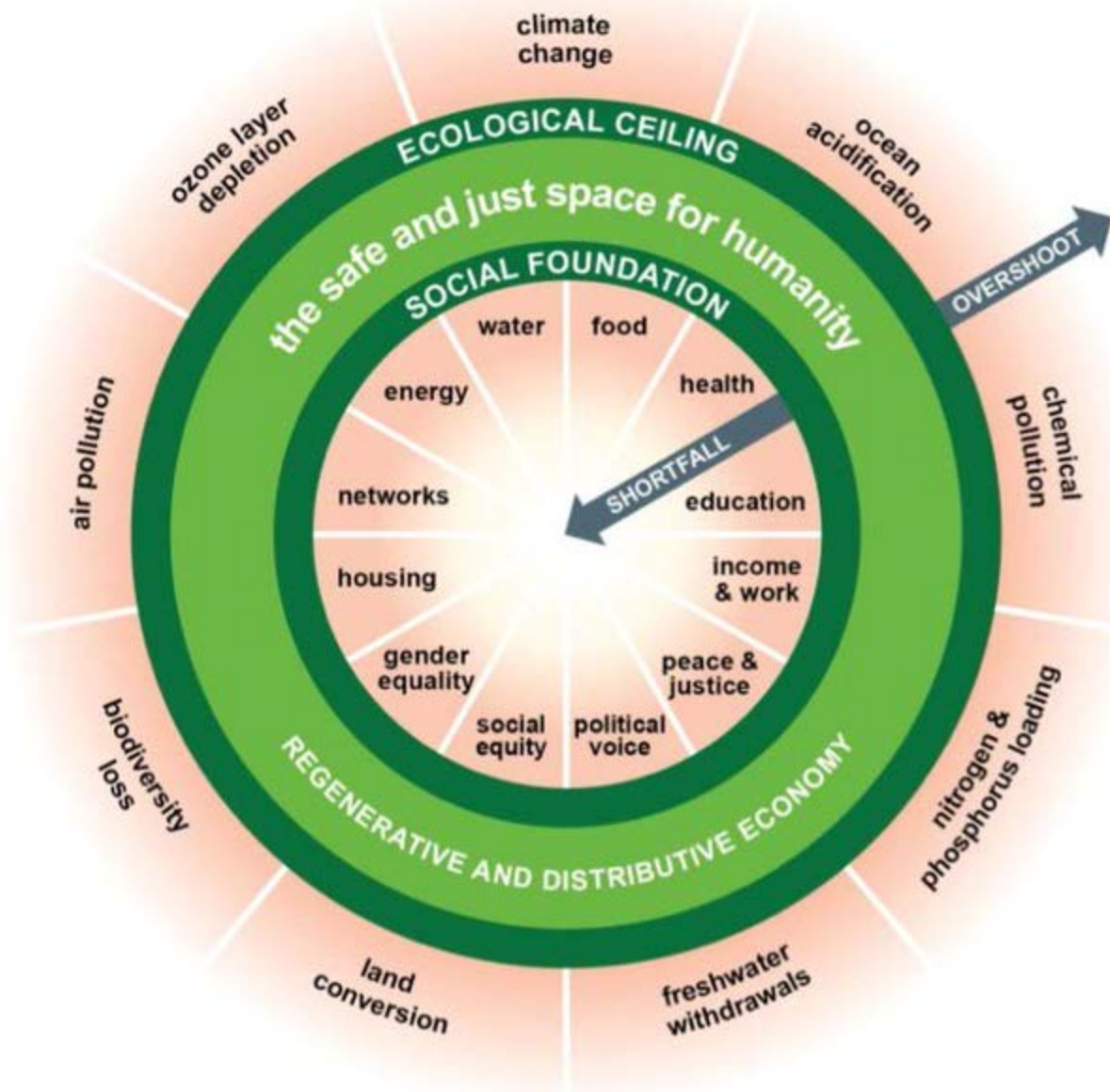
... not only grow jobs and wages and increase our Gross Domestic Product, but also to improve the Genuine Progress Indicator – a measure that takes into account economic, social and natural assets and impacts — by 5% over baseline over the next five years.



# Vermont Act 113

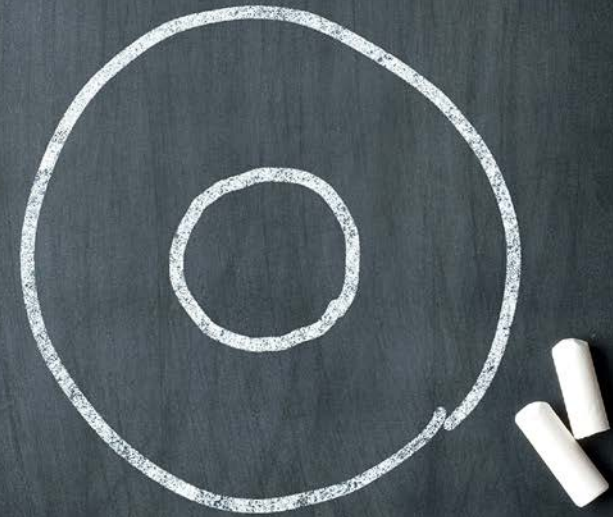
## An act relating to the genuine progress indicator

- (a) Purpose.** The purpose of the genuine progress indicator (“GPI”) is to measure the state of Vermont’s economic, environmental, and societal well-being as a supplement to the measurement derived from the gross state product and other existing statistical measurements.
- (b) Definition.** The GPI is an estimate of the net contributions of economic activity to the well-being and long-term prosperity of our state’s citizens, calculated through adjustments to gross state product that account for positive and negative economic, environmental, and social attributes of economic development.
- (c) Intent.** It is the intent of the general assembly that once established and tested, the GPI will assist state government in decision-making by providing an additional basis for budgetary decisions, including outcomes-based budgeting; by measuring progress in the application of policy and programs; and by serving as a tool to identify public policy priorities, including other measures such as human rights.



# DOUGHNUT ECONOMICS

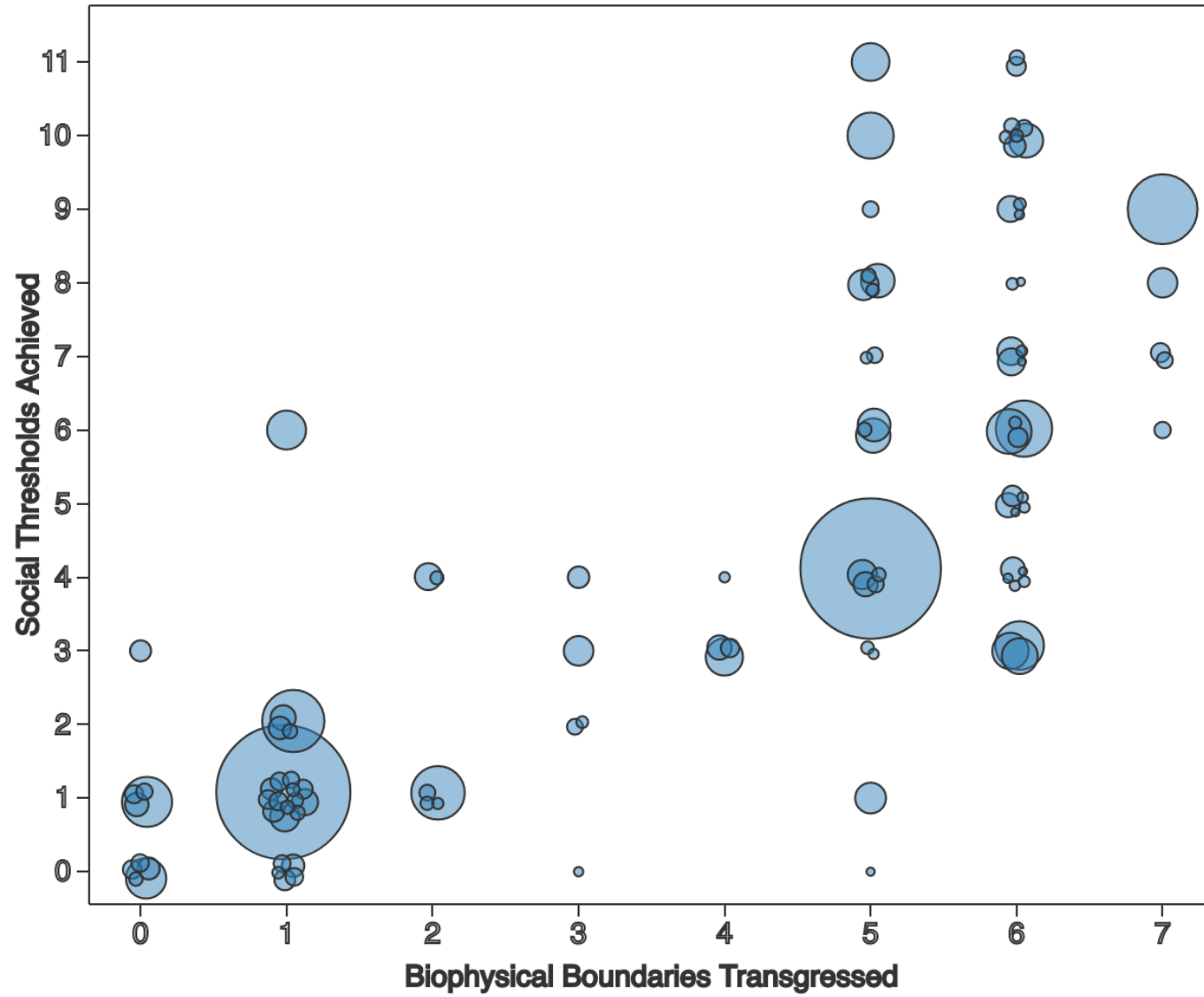
Seven Ways to Think Like a 21st-Century Economist



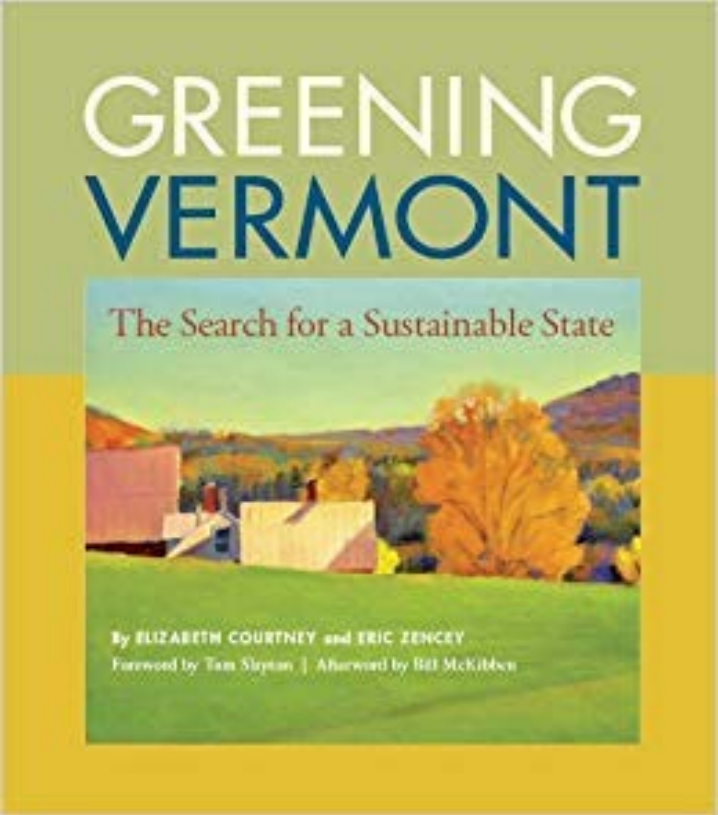
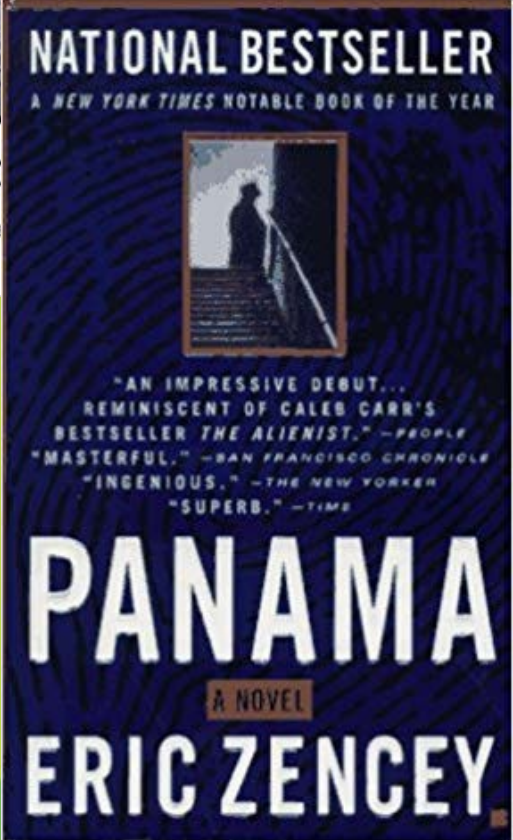
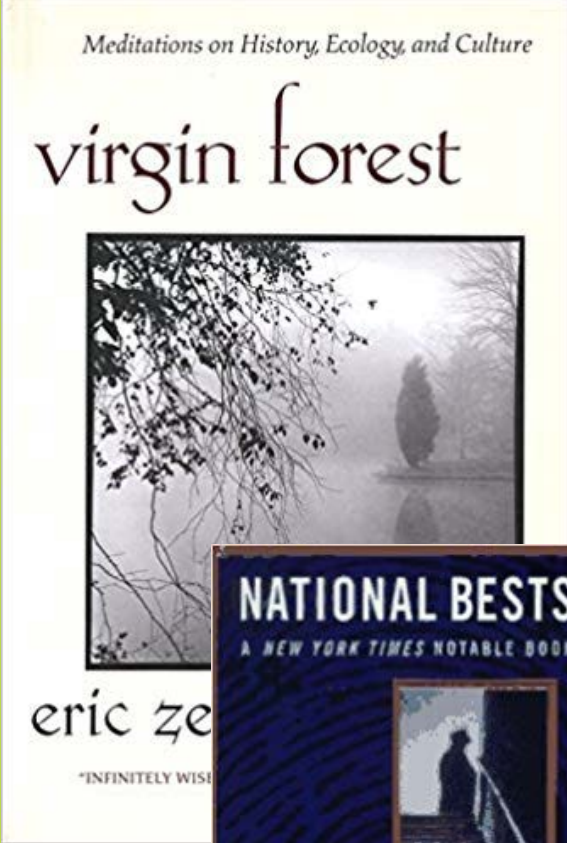
**KATE RAWORTH**

'I read this book with the excitement that the people of his day must have read John Maynard Keynes's *General Theory*. It is brilliant, thrilling and revolutionary.' George Monbiot

# Biophysical Boundaries Transgressed versus Social Thresholds Achieved by Nation



O'Neill, D.W. et al., "A Good Life Within Planetary Boundaries," *Nature Sustainability*, 2018.



Thanks to Mr. GPI, Eric Zencey



The University of Vermont



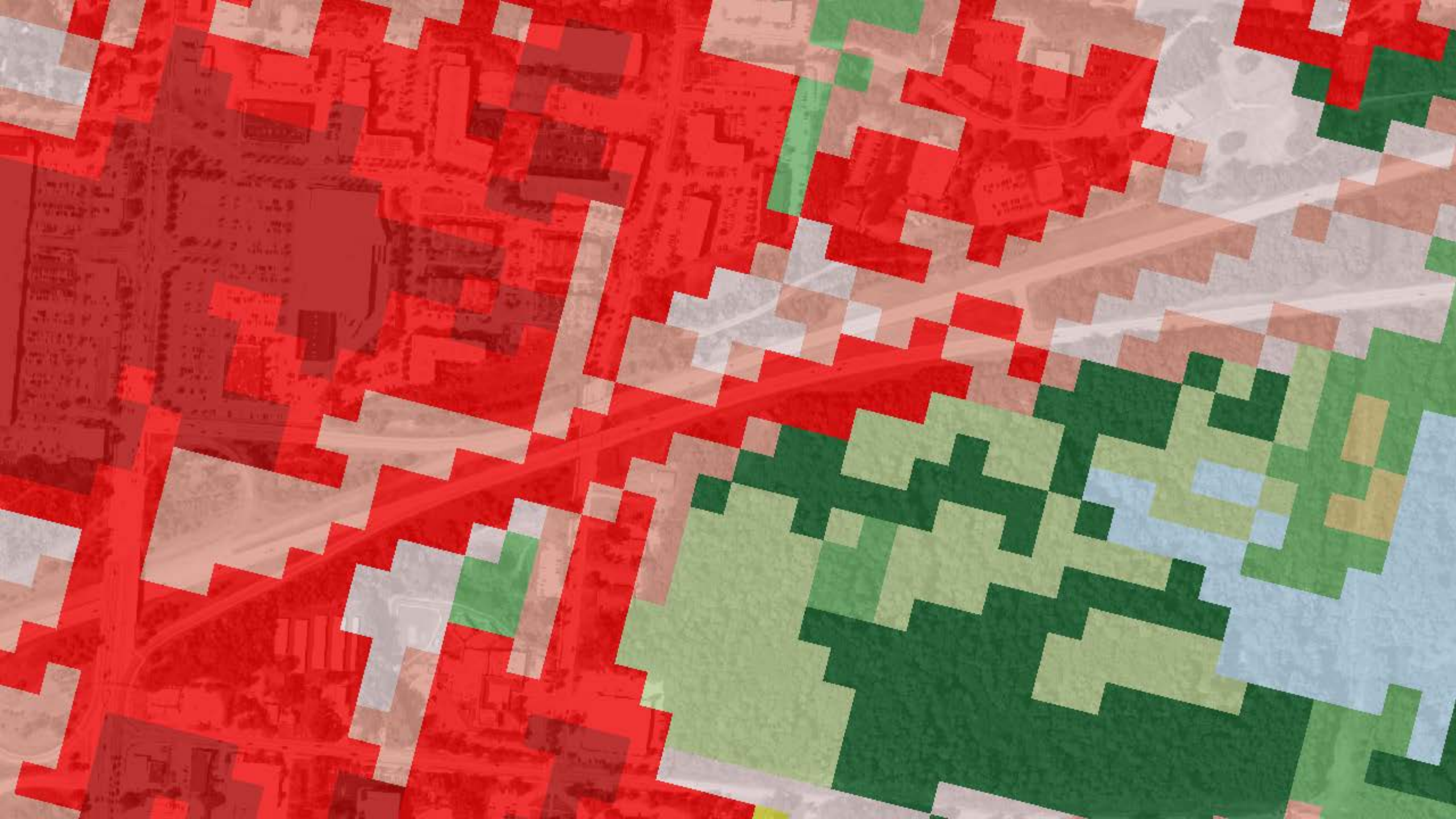
# Mapping Vermont from Above



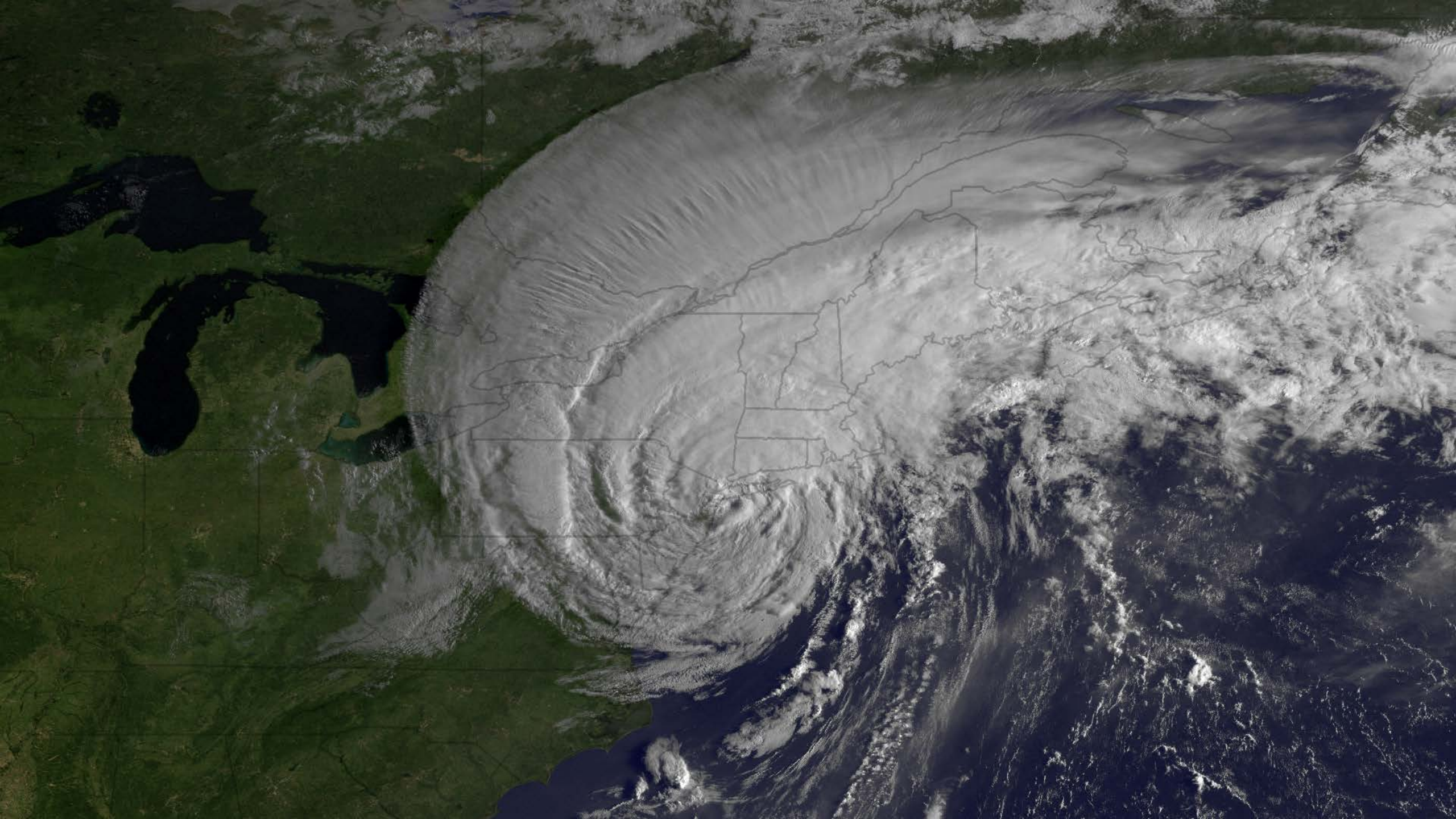
**Jarlath O'Neil-Dunne**























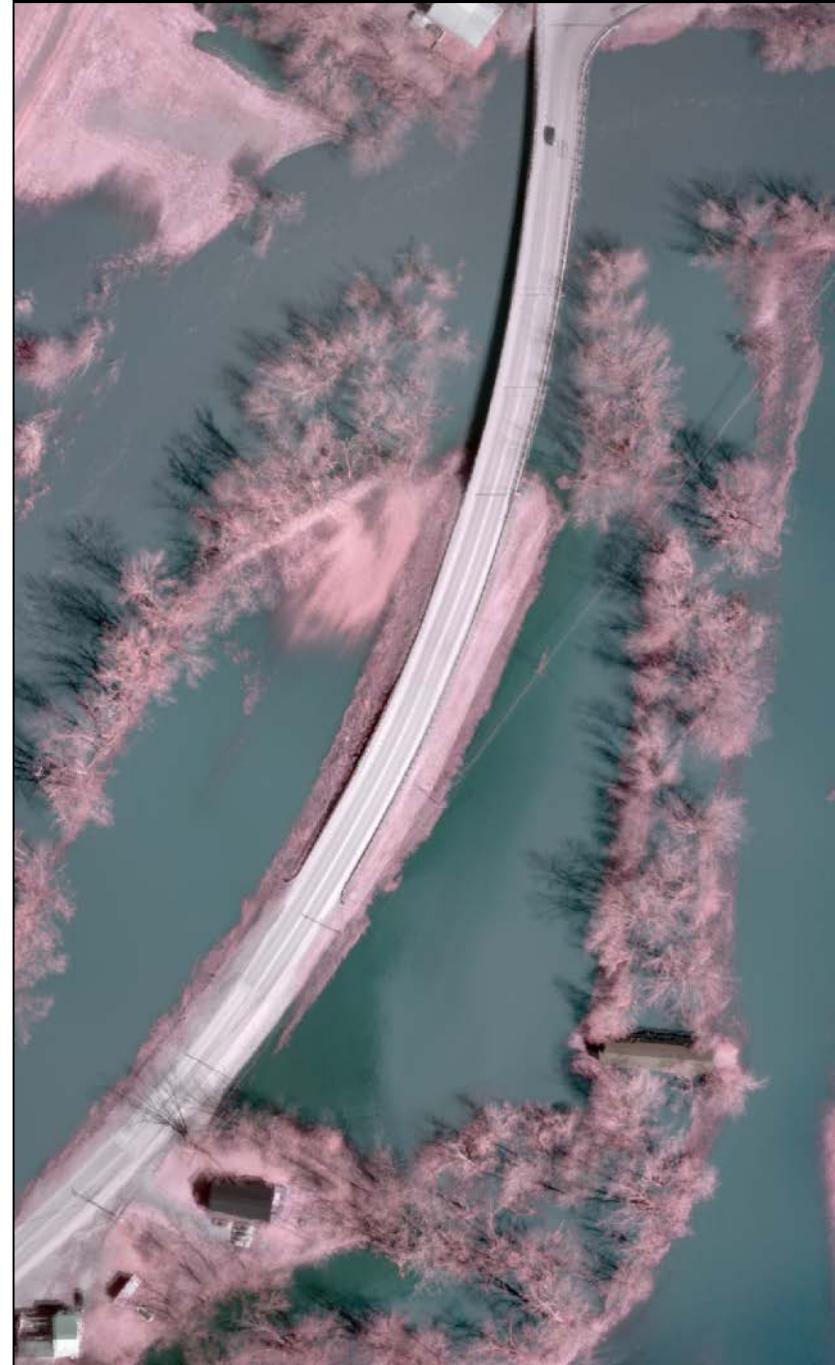
March 20, 2015

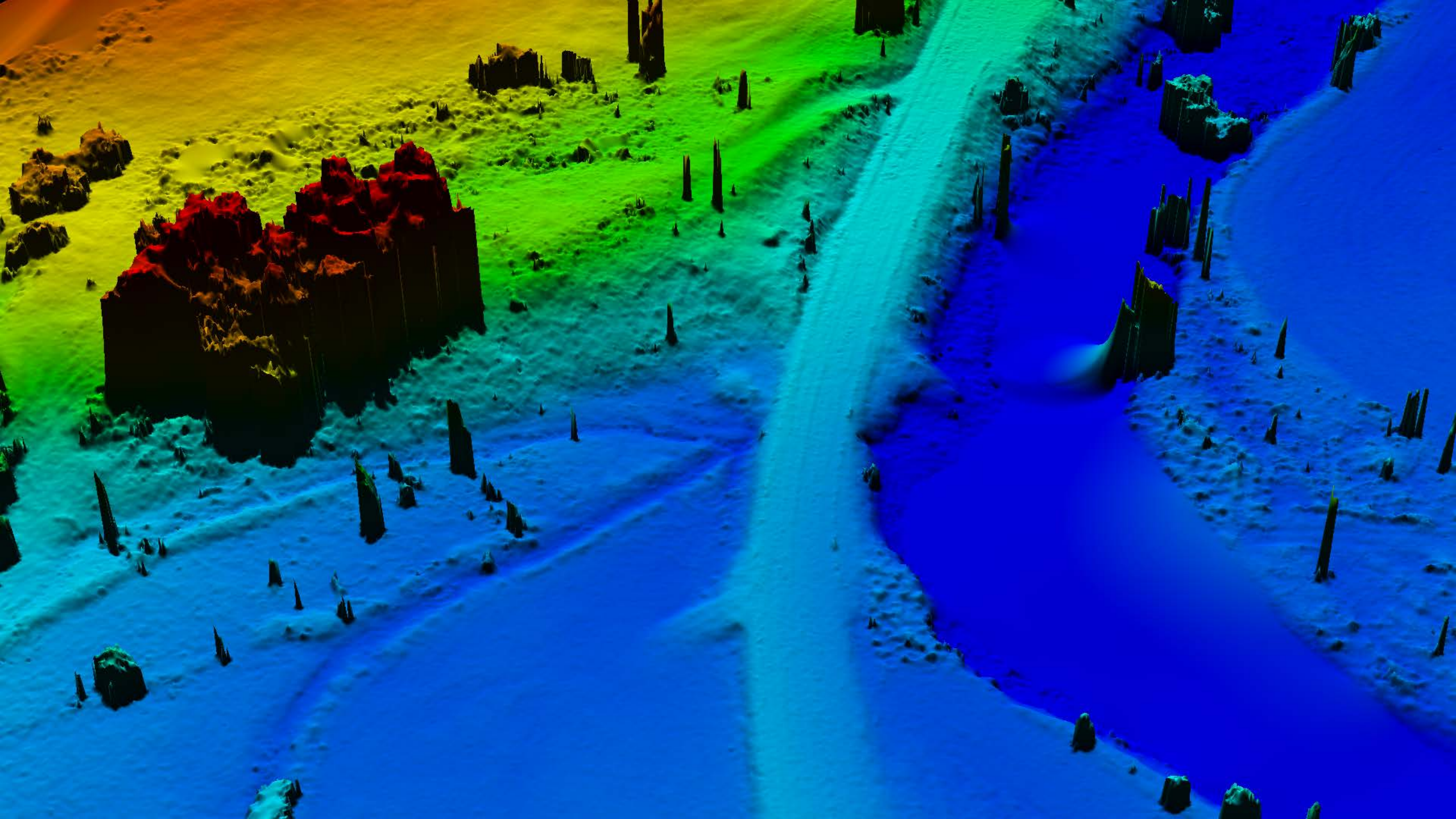


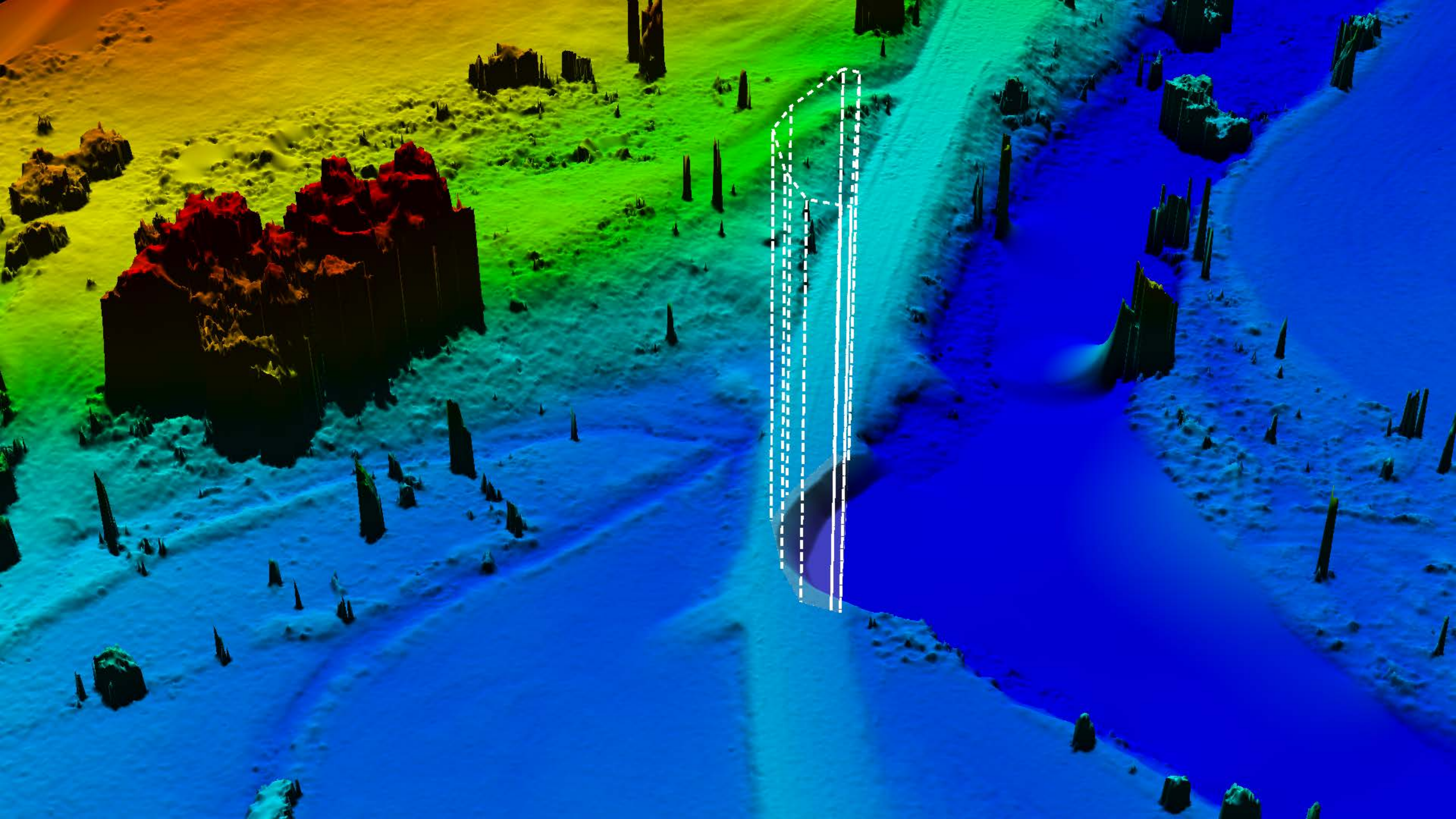
April 9, 2015



April 16, 2015

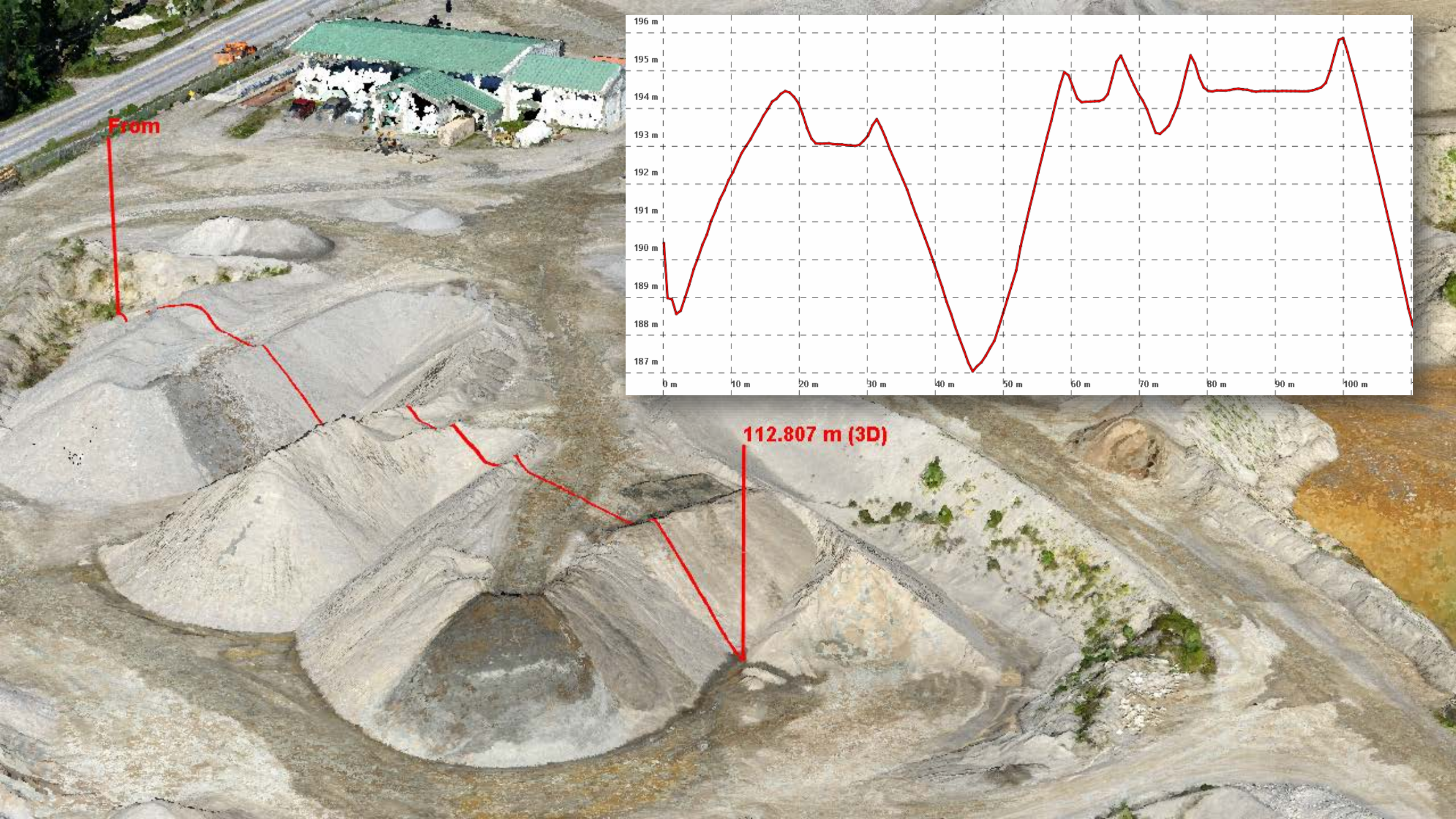










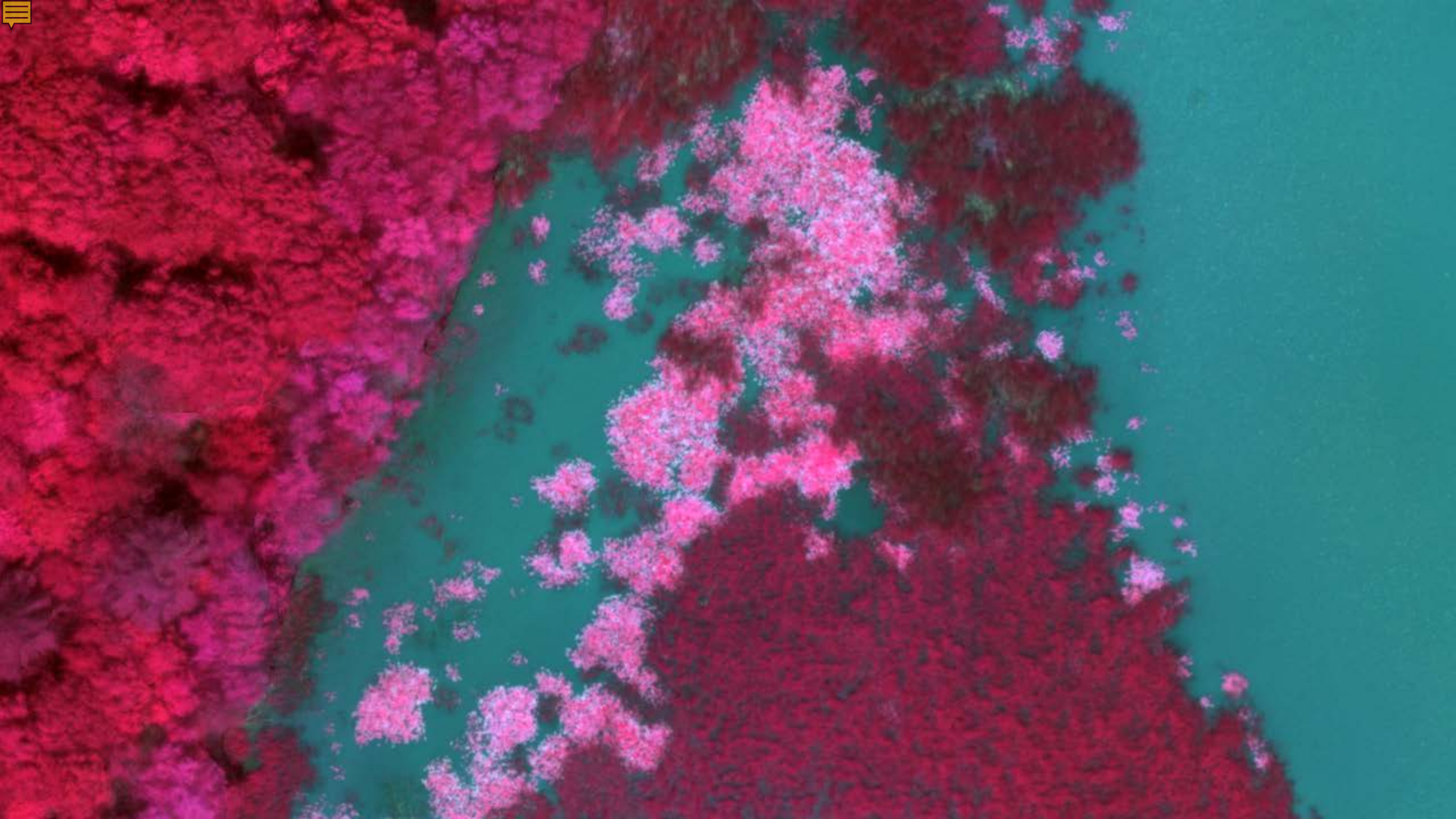


From



112.807 m (3D)







# Mapping Vermont from Above



**Jarlath O'Neil-Dunne**



# Insights from Migration Research for Vermont Legislators

## Cheryl Morse

*Associate Professor*  
Geography Department  
Environmental Program  
Food Systems Graduate Program  
University of Vermont

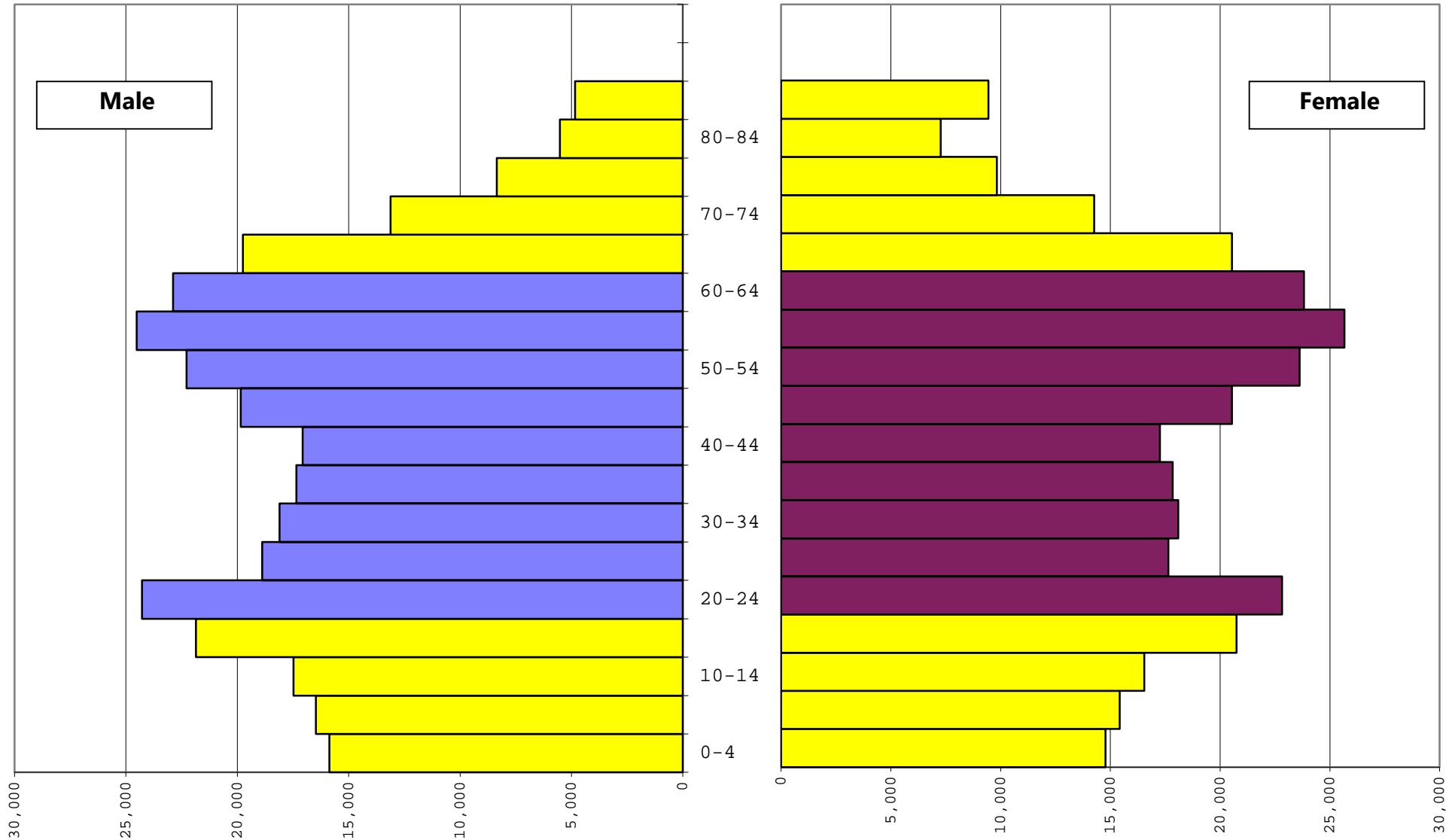
Cheryl.Morse@uvm.edu

[vrootsmigration.org](http://vrootsmigration.org)

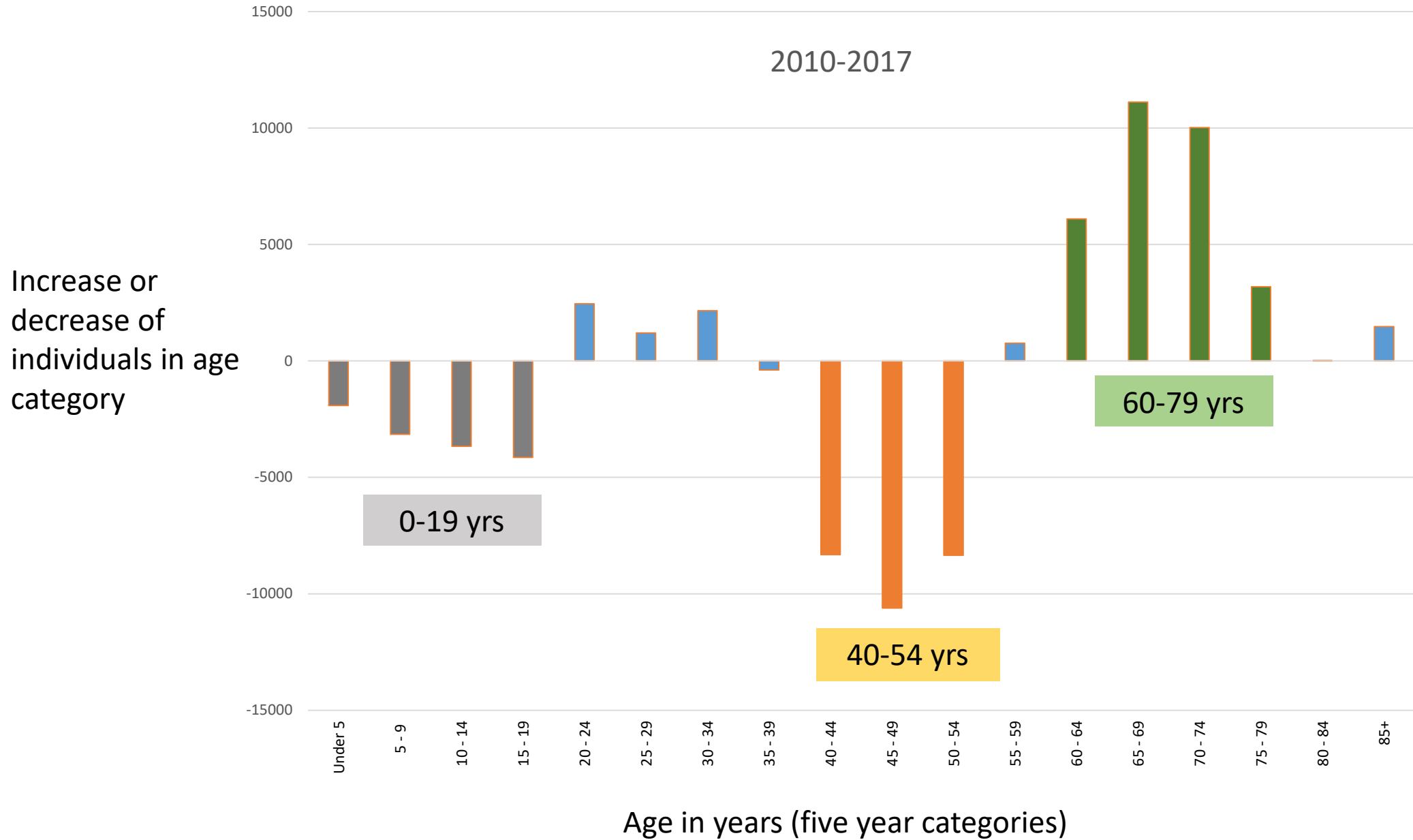


# Vermont's Population Age-Sex Profile

2016 American Community Survey Estimates



# Vermont Population Change by Age Category



# **Why Leavers Leave Vermont: Jobs, the Cost of Living, a Cold Climate and a Lack of Diversity**

*No reason for leaving dominates the leavers' responses.*

**I can earn more money outside VT (35%)**

**My work is outside VT (30%)**

**VT's cost of living is too high (24%)**

**VT's cold weather is intolerable (21%)**

**I prefer to live in an area with greater cultural diversity (20%)**

***Gender and Educational Attainment Matter***

## Why Returnees Come Home

*More than **forty percent of all Returnees** reported they moved back because:*

**I enjoy Vermont's landscape** (43%)

**I missed Vermont's culture and community** (42%)

**I missed my family** (56%)

**12%** said they moved back to Vermont for a new job opportunity



# Why Stayers Choose Vermont

*More than half of all **Stayers** reported they stayed in Vermont because:*

**I enjoy Vermont's landscape** (66%)

**I stayed to live near family** (62%)

**I appreciate Vermont's culture and community** (50%)

**32%** said they stayed because their work is in Vermont

Do we craft demographic policies based on:

- Why stayers leave for other places?
- The factors that draw Vermonters back?
- The attributes that keep people in Vermont?



Cheryl Morse  
[cheryl.morse@uvm.edu](mailto:cheryl.morse@uvm.edu)

