

Food Safety Training and Education with New Entry Sustainable Farming Project

NECAFS Annual Conference

February 10-12, 2020 in Philadelphia, PA



Kevin Cody, PhD
Farmer Training Program Manager

MORRIS FARM
FREDERICK LAY CLAYTON
LANDSCAPE
SINCE 1882

New Entry Food Safety Program Objectives



Experiential learning/training opportunities



Historically underserved and beginning farmers



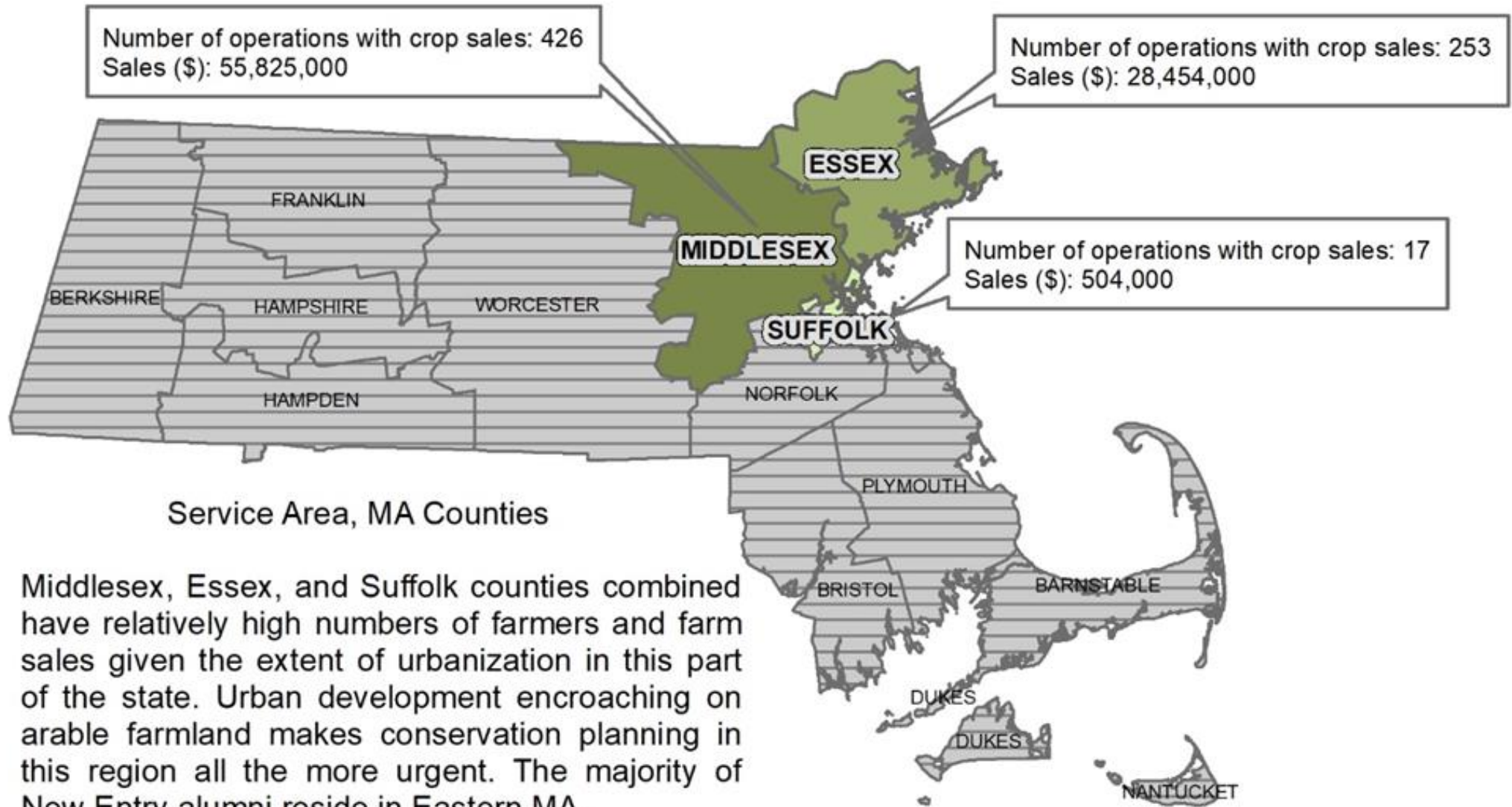
Plain language guides and signage



Online curriculum modules



Partnerships and outreach



Service Area, MA Counties

Middlesex, Essex, and Suffolk counties combined have relatively high numbers of farmers and farm sales given the extent of urbanization in this part of the state. Urban development encroaching on arable farmland makes conservation planning in this region all the more urgent. The majority of New Entry alumni reside in Eastern MA.

Principal Producer Demographic Data for MA and Northeast MA Counties

	MA	Essex Co.	Middlesex Co.	Suffolk Co.
Total # of Principal Producers (PP)	10,154	637	851	27
PP with Military Service	947 (9.3%)	36 (5.6%)	74 (8.6%)	1 (3.7%)
PP Female	4138 (40%)	300 (47%)	387 (45%)	15 (55%)
PP Non-white Race/Ethnicity	459 (.45%)	36 (5.6%)	51 (5.9%)	15 (55%)
New and Beginning PP	2356 (23%)	156 (24%)	258 (30%)	22 (81%)



Source: USDA NASS Census 2017



Program Areas

Ongoing
services

Food Hub

Technical Assistance

Workshops



Program
description

Explore
Farming
Wkshps

Introduction to
farming and food
systems

Crop
Production
Course

Field and garden
scale production

Business
Planning
Course

Financial planning

Farm
Incubator

1-3 yrs
1/4 -1 acre

Land
Access/
Transition

of participants
decreases

significance of impact
increases



Objectives

Impacts

Explain farmers role
in food system

Educate public,
introduce
organization

Experiential learning
--> organic
farm/garden skills

More people growing
food

Develop a farm
business plan

New businesses
started, some as
new incubator
farmers

Experiment with
running small farm
business

Successful new farm
businesses
established

Connect beginning
farmers to land
access service
providers

Beginning farmers
continue operations
into years 3-5 with
secure land tenure

More sustainable
community food
system

Breaking ground at Moraine Farm, Beverly, MA 2019





Courses

Explore
Farming

Farm
Business
Planning

Crop
Production

Workshops

Food safety

Direct
marketing

Record
keeping

Incubator

Technical
assistance

$\frac{1}{4}$ to 1 acre
of land

Equipment

Food hub



CSA

Aggregation and
distribution

Direct market
access for New
Entry farmers

12 farmers and
160 shares

Food Access

2008

Council on Aging
Senior Centers

Food banks

2000 + individuals
served 2018

Market Training

Post-harvest
handling

Food safety

Pricing and display
at FMs



Crop Production

canvas.tufts.edu/courses/8178

Tufts UNIVERSITY

- Account
- Dashboard
- Courses
- Calendar
- Inbox
- Help

Module 9: Food Safety and Post Harvest Handling

- Harvest & Storage 2019.pptx
- post_harvest_handling_chart_updated.2019.pdf
- Additional Resources
- Video: Produce Safety Alliance on hand washing
- PSA.Learning_Objectives_fromtabs_2016.pdf
- FSMA-Produce Coverage flowchart v6.pdf
- One Page Food Safety Checklist.pdf
- Final Produce Safety Rule Plain Language Guide3.pdf

Experiential Crop Production Course

20-week course on organic horticulture, post-harvest handling, food safety



Food safety in the field & in the classroom



Eastern Mass, Collaborative Regional Alliance for Farmer Training (CRAFT)



Portable handwash demo.



Food Safety Training New Entry Food Hub

- Opportunities to teach food safety and post-harvest handling for farmers selling to the food hub and other wholesale markets.

Partners and collaborators



United States Department of Agriculture
National Institute of Food and Agriculture

Additional Food Safety Outreach Program— Outputs

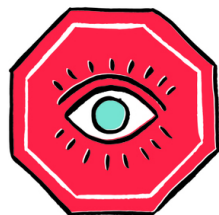
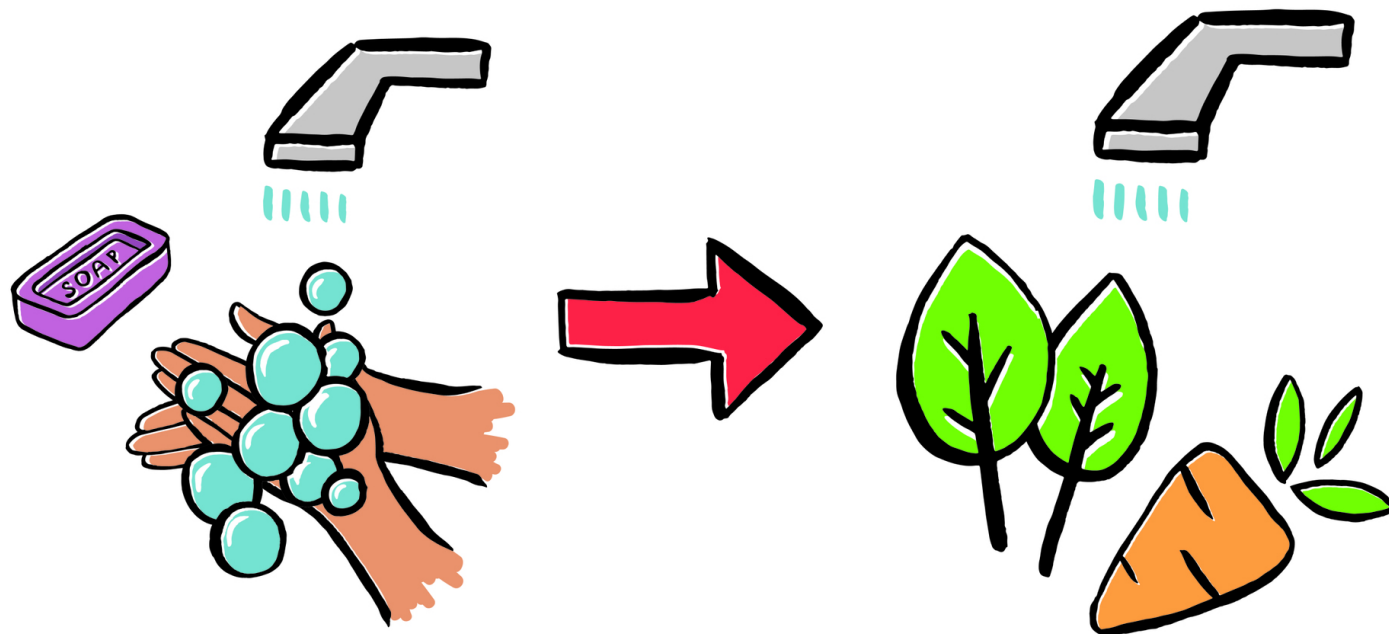


Food Safety Modernization Act's (FSMA) Produce Safety Rule

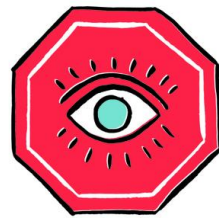
**A Plain Language Guide from
New Entry Sustainable Farming Project
August 2017**

This Guide Will Help You Answer

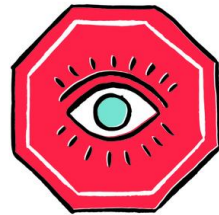
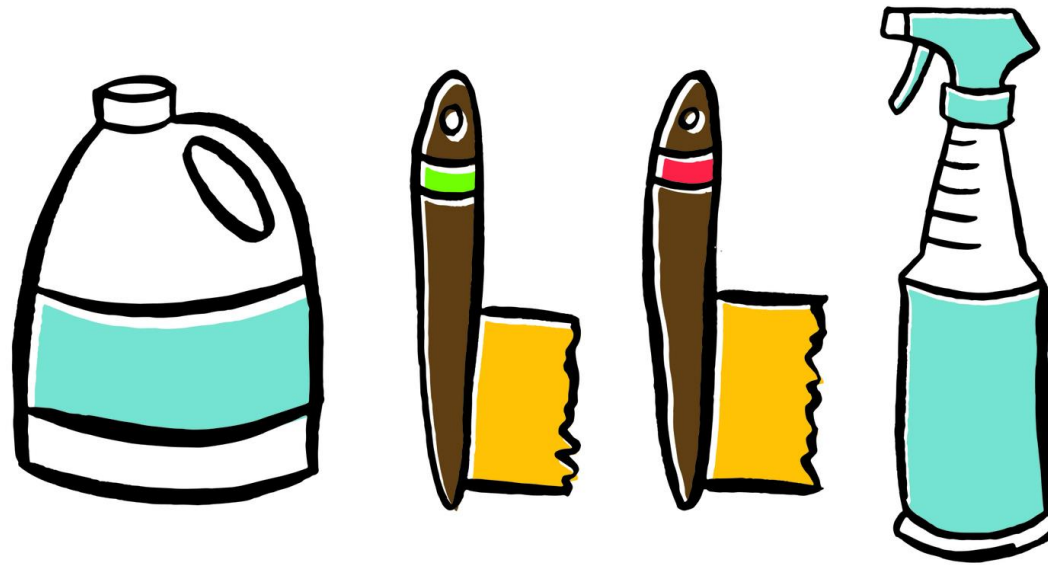
- What is the Food Safety Modernization Act (FSMA)?
- What is FSMA's Produce Safety Rule?
- Why should I be concerned with Food Safety on my farm?
- Is my farm Covered under the Regulations?
- How do I practice Food Safety even if I am Exempt?
- What is a Food Safety Plan?



WASH HANDS BEFORE USING PRODUCE WASH STATION



NO TOBACCO PRODUCTS, FOOD OR DRINK



CLEANING SUPPLIES

Thank you!

NECAFS Annual Conference

February 10-12, 2020 in Philadelphia, PA



Kevin Cody, PhD
Farmer Training Program Manager

MORRIS FARM
FREDERICK LAY CLAYTON
LANDSCAPE
SINCE 1882