
Graduate College

Graduate Faculty Meeting 4-26-22

Presented by:
Cindy Forehand
Dean of the Graduate College
University of Vermont Graduate College

Agenda

- Welcome
- Approval of the November 11, 2021 Minutes
- Research and R1 update – Kirk Dombrowski
- Dean's Report – Cindy Forehand
 - Student and faculty Outcome of Post-doctoral position committee work
 - Outcome of Graduate Stipend and Benefits Committee work
 - Managing the transition of 200 level courses approved for graduate credit (200AGC) for the renumbering project
- Admissions Report
- Activities of the Graduate Executive Committee – Cindy Forehand
- New business
- Adjourn



THE UNIVERSITY OF VERMONT
GRADUATE COLLEGE

Research and R1 update

Presented by
Kirk Dombrowski
Vice President for Research

Dean's Report

Student and faculty Outcome of Post-doctoral position
committee work

Dean's Report

Outcome of Graduate Stipend and Benefits Committee work

Dean's Report

Managing the transition of 200 level courses approved for graduate credit (200AGC) for the renumbering project

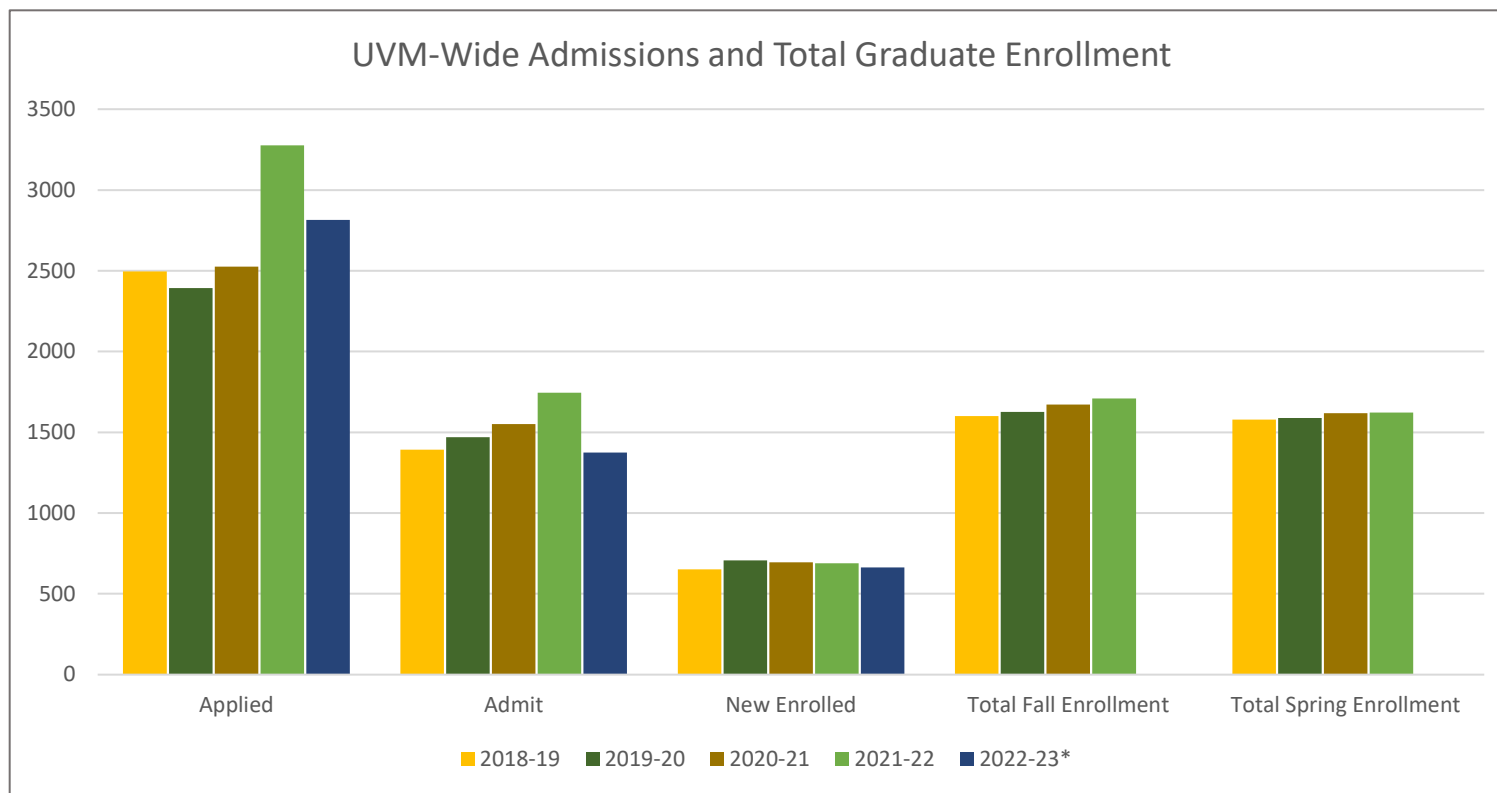




THE UNIVERSITY OF VERMONT
GRADUATE COLLEGE

Admissions & Enrollment Management Update Spring 2022

Graduate Admissions and Enrollment AY Comparison



As compared to AY 20-21, for AY 21-22 this represents:

30% Increase in Applications

13% Increase in # Admitted

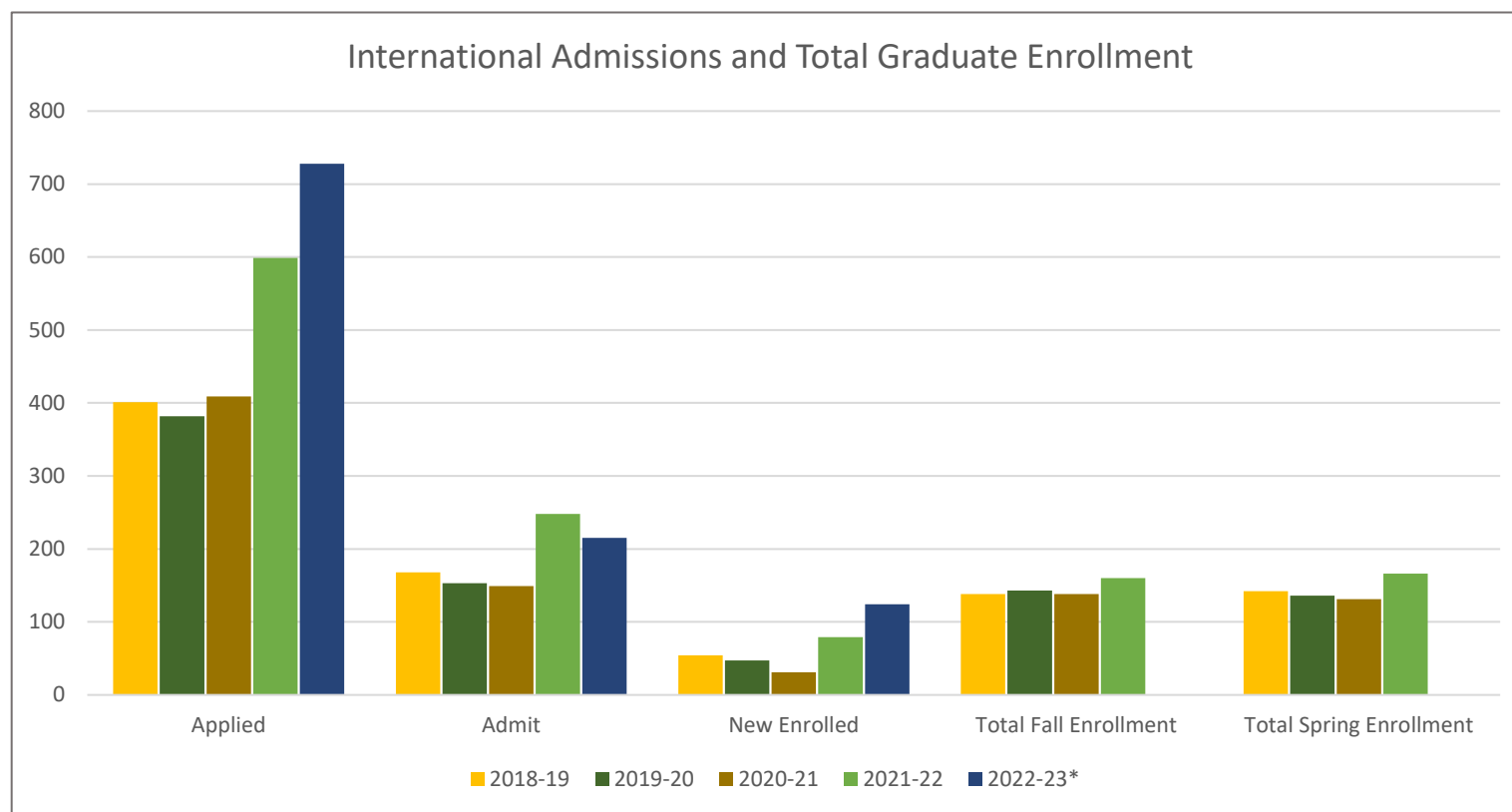
1% Decrease in New Enrollment

8% point lower Admit Rate

6% point lower Yield Rate

*2022-23 values are for admissions cycle in progress as of 4/6/22: applications are still arriving, not all programs have made admit decisions, nor all students made enrollment decisions.

International Graduate Admissions and Enrollment AY Comparison



As compared to AY 20-21, for AY 21-22 this represents:

46% Increase in Applications

66% Increase in # Admitted

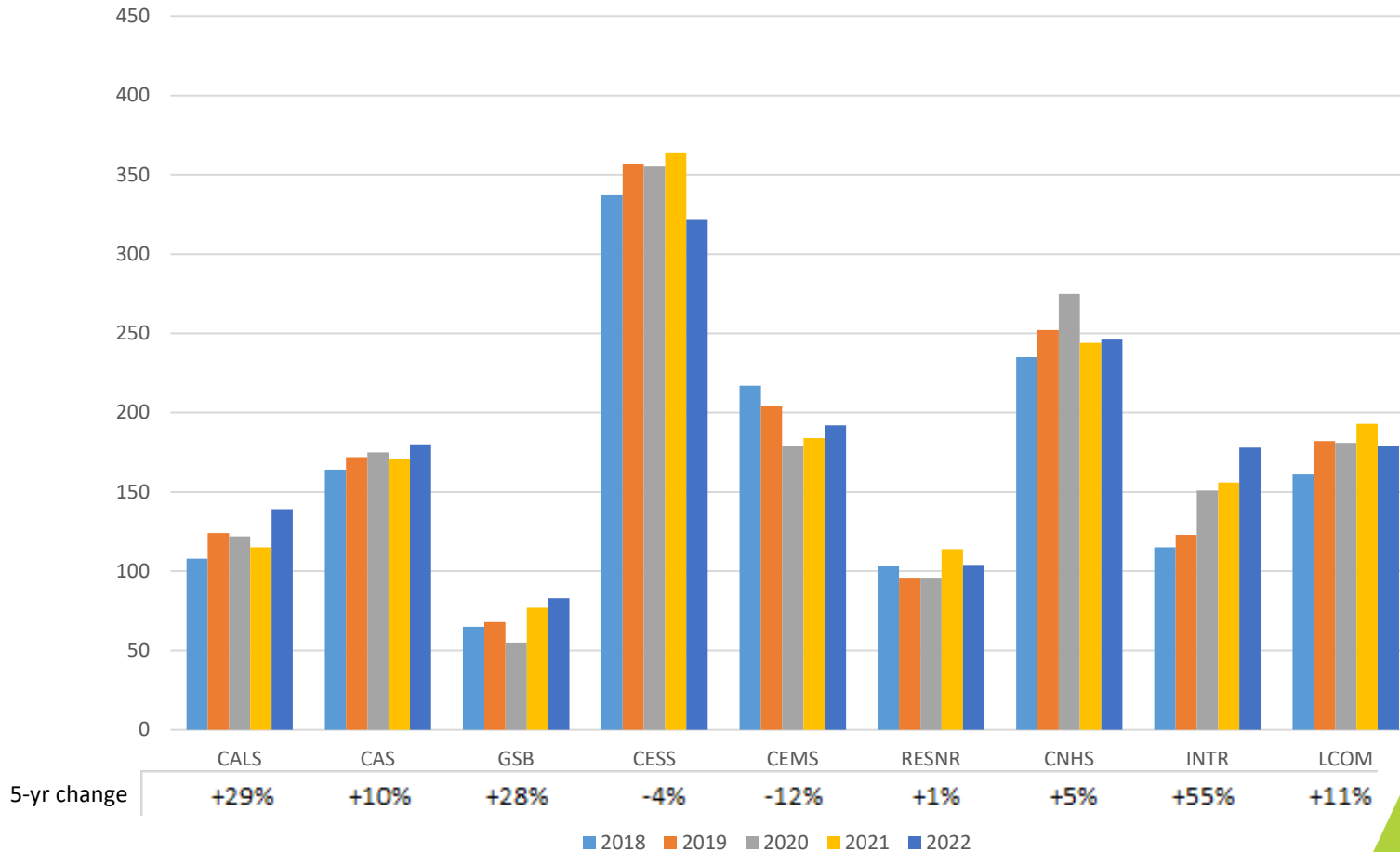
155% Increase in New Enrollment

5% point higher Admit Rate

11% point higher Yield Rate

*2022-23 values are for admissions cycle in progress: New enrollment is based on applicant responses & includes those scheduled to come after deferring in prior year. Last year 41% of positive int'l responses did not enroll in that term.

Spring Five-Year Enrollment Comparison By College



Need to update from now on
LARGER SECOND HEADLINE



The University of Vermont

Graduate Executive Committee Actions

Other

- Grade changes no longer require an explanatory note, but Incomplete grades still do
- Reorganization...
- Reappointment to the Graduate Faculty – down to 26 faculty who have not responded

Graduate Executive Committee Actions

Other

- FY 22 Stipends: Set goal to bring the overall average stipend level to the 50th percentile relative to the OSU schools database (30 R1 and 18 R2 public institutions)
 - At absolute value, our (FY20) stipend average was at the 69th percentile with disciplinary range from 50th to 79th percentile
 - With correction for high cost of living (housing!) the stipend average is only 45th percentile with disciplinary ranges from 32nd -54th percentile
 - Relatively small increases required to move the percentile rank but moving target since others change as well
 - Exploring setting minimum FY 23 doctoral stipend at Living Wage for Chittenden county
- **New Business**
- **Adjourn**