

*For all new courses/travel; for repeat course, only if previously Low rating

When Provost Office approval is required

1. Department of State Travel Advisory = Level 3; or
2. International SOS Travel Risk Rating = High; or
3. Anytime ITAG has concerns that the risks to student/employee health or safety are too high after accounting for all available risk mitigation strategies, regardless of DOS or I-SOS ratings.

Acronyms

DOS = U.S. Department of State
 I-SOS = International SOS, UVM's health and security information and emergency services provider
 ITAG = UVM International Travel Advisory Group
 OIE = UVM Office of International Education

ITAG REVIEW COMPONENTS (sample)

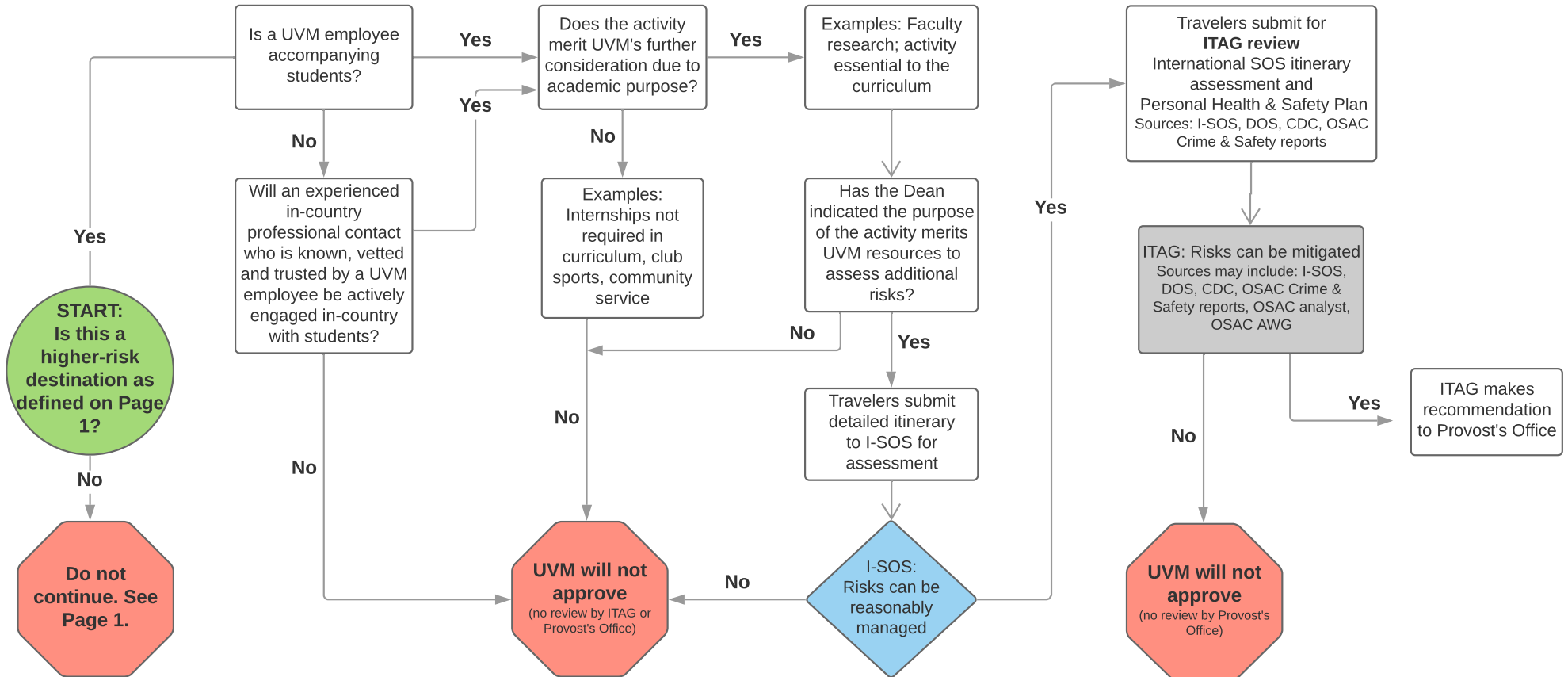
Destination factors: Does the U.S. Dept of State have capacity to assist U.S. citizens in the event of an emergency? Does I-SOS have the ability to assist travelers properly and in a timely way in the event of an emergency? What is Centers for Disease Control advice if medical concern?

Program factors: What is the level of in-country experience of the group leader and co-leader? What is the nature and duration of the relationship with in-country partners?

Participant factors: What is the class standing of the prospective student(s)? How much travel experience do prospective student(s) have, and in what types of environments?

Overall: To what extent can the risks be properly mitigated?

Full risk assessment and management tools available from OIE.



When Provost Office approval is required

1. Department of State Travel Advisory = Level 3; or
2. International SOS Travel Risk Rating = High; or
3. Anytime ITAG has concerns that the risks to student/employee health or safety are too high after accounting for all available risk mitigation strategies, regardless of DOS or I-SOS ratings.

Acronyms

DOS = U.S. Department of State
 I-SOS = International SOS, UVM's health and security information and emergency services provider
 ITAG = UVM International Travel Advisory Group
 OIE = UVM Office of International Education
 OSAC = Overseas Security Advisory Council (DOS)
 OSAC AWG = OSAC Academic Working Group

ITAG REVIEW COMPONENTS (sample)

Destination factors: Does the U.S. Dept of State have capacity to assist U.S. citizens in the event of an emergency? Does I-SOS have the ability to assist travelers properly and in a timely way in the event of an emergency? What is Centers for Disease Control advice if medical concern?

Program factors: What is the level of in-country experience of the group leader and co-leader? What is the nature and duration of the relationship with in-country partners? What is the duration of time the group will be in higher-risk location? Do program activities increase risk in higher-risk area?

Participant factors: What is the class standing and maturity of the student(s)? How much travel experience do student(s) have, and in what types of environments? Group size? Do all participants agree in writing to risk mitigation strategies outlined by I-SOS and ITAG?

Overall: To what extent can the risks be properly mitigated?

Full risk assessment and management tools available from OIE.