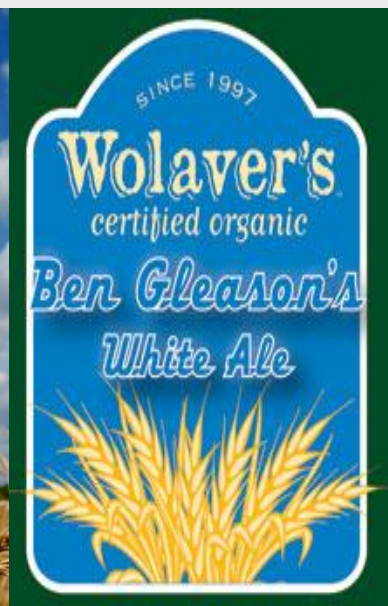
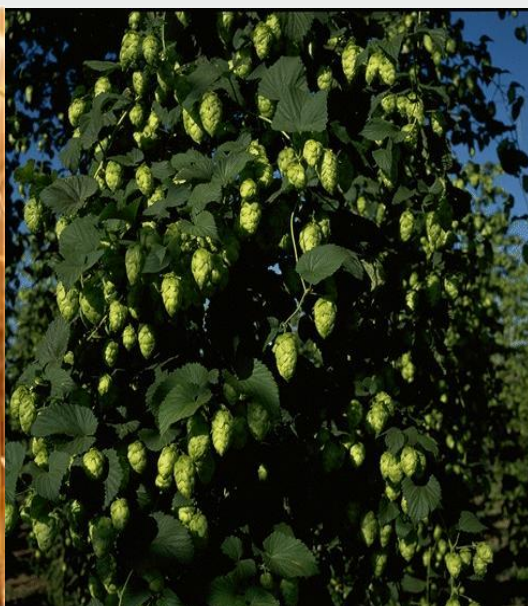


UVM Research Update

Dr. Heather Darby, Rosalie Madden, & Scott Lewins
University of Vermont Extension



UVM Hops Program



NORTHWEST CROPS & SOILS PROGRAM



UNIVERSITY OF
VERMONT

EXTENSION

CULTIVATING HEALTHY COMMUNITIES

What do you consider to be your major constraints to successfully growing hops in the Northeast, either currently a problem or lack of knowledge on the topic?

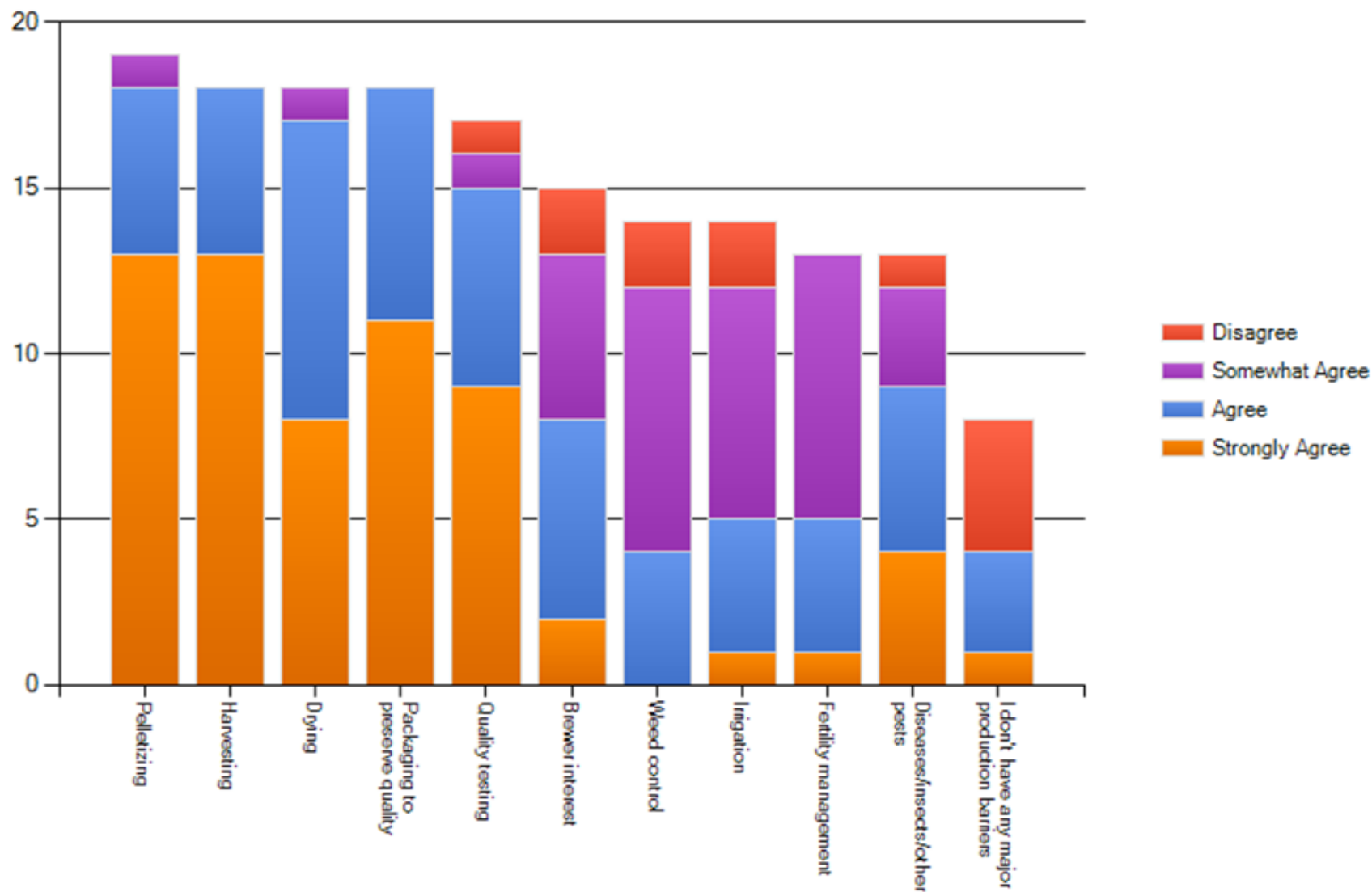


Figure 1. UVM Extension 2011 Winter Hops Conference, constraints to successfully growing hops in the Northeast as viewed by local growers.

Appropriate Equipment

working model & designs of:

mechanical harvester
vertical oast (hop drier)
mechanical hop baler
hand operated hop baler

UVM Extension Instructional Wiki
(<http://www.uvm.edu/extension/cropsoil/wikis>)
to allow public access and input

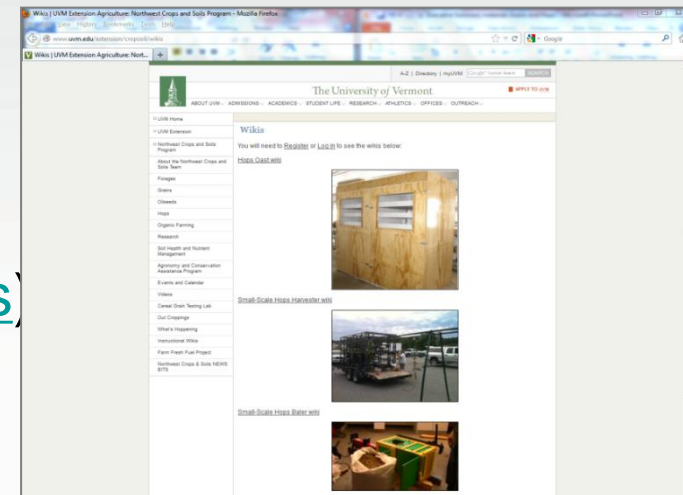
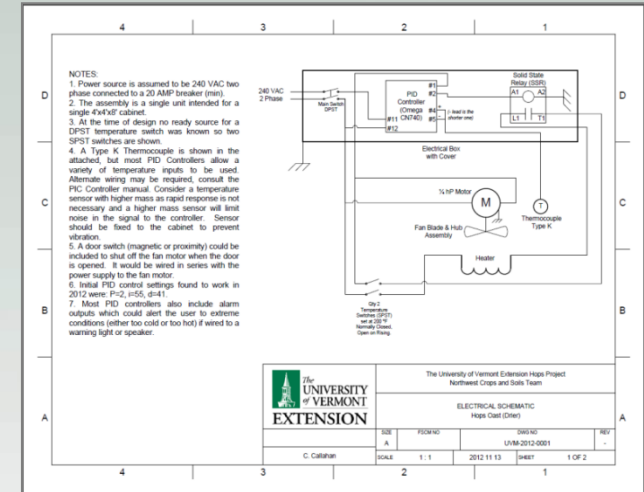


Figure 15. Visitors to the UVM Extension NW Crops and Soils Instructional Wiki page are encouraged to post any modifications they might make to the designs so that other might learn from their experiences.



Hop Website

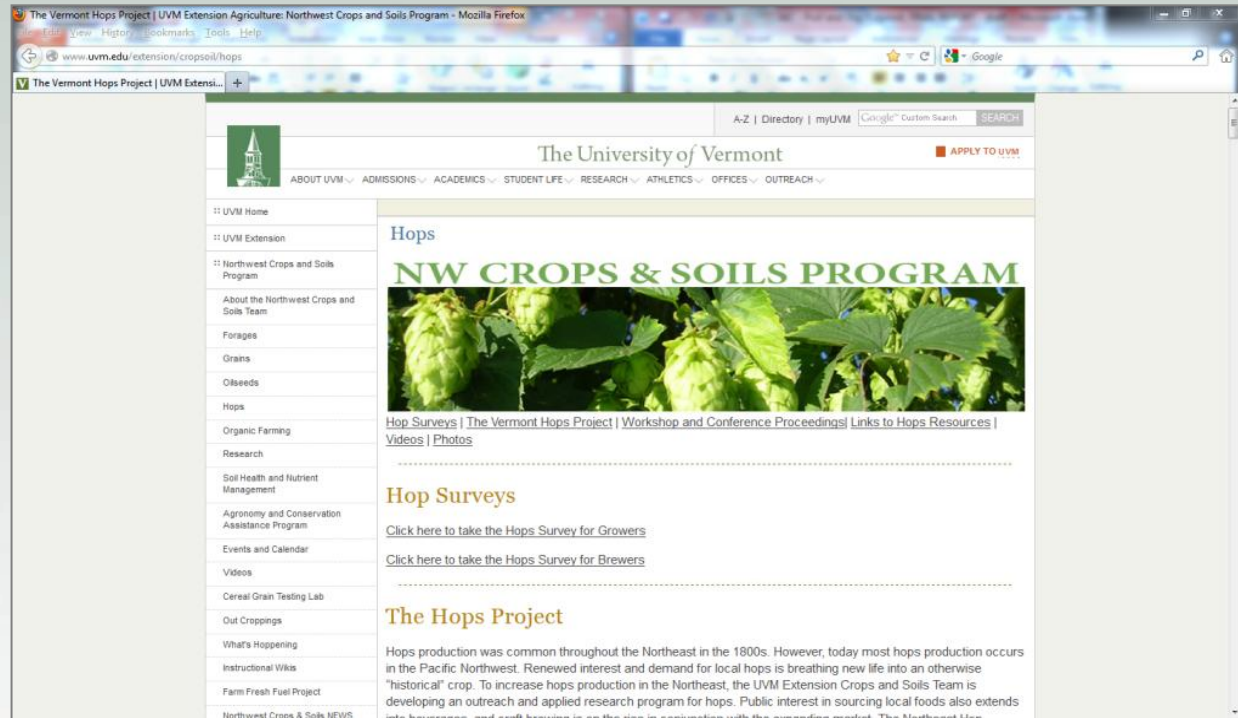
Informational Articles

Blog

YouTube Videos

Wiki

Other tools

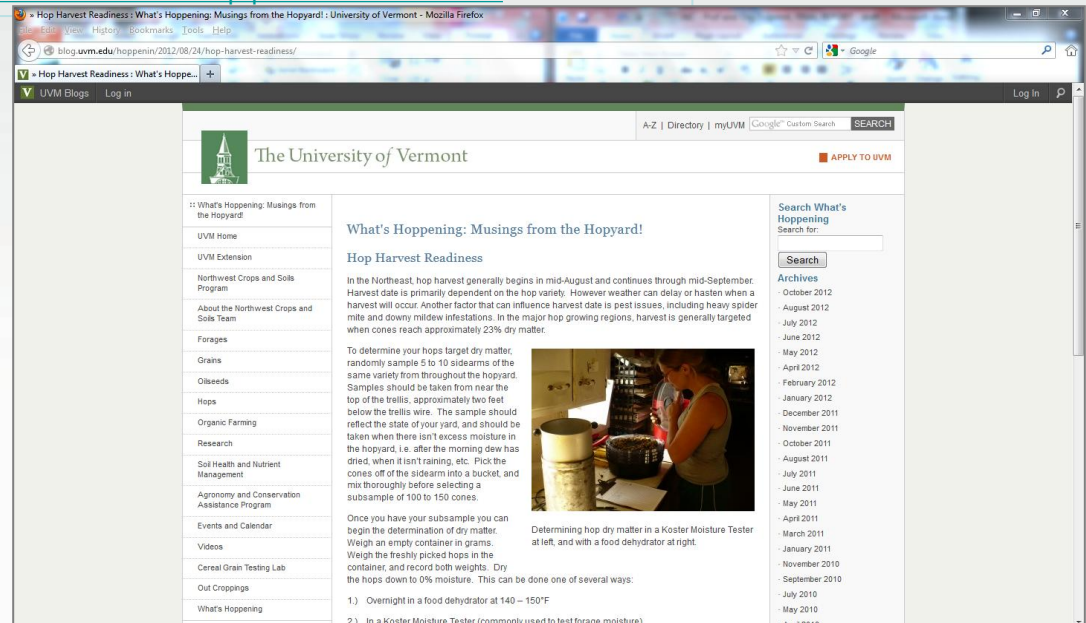


www.uvm.edu/extension/cropsoil/hops

What's Hoppening Blog

121 subscribers, and 50 posts

- Japanese beetles: <http://blog.uvm.edu/hoppenin/2012/07/18/japanese-beetles-on-hops-in-the-northeast/>
- Downy mildew: <http://blog.uvm.edu/hoppenin/2012/06/21/downy-mildew/>
- Spider mite destroyers and spined soldier bugs: <http://blog.uvm.edu/hoppenin/2011/07/25/spider-mite-destroyers-and-spined-soldier-bugs/>
- Potato leafhoppers in hopyards: <http://blog.uvm.edu/hoppenin/2011/07/18/potato-leafhopper-damage-in-hopyards/>
- Powdery mildew: <http://blog.uvm.edu/hoppenin/2011/07/05/managing-powdery-mildew-of-hops-in-the-northeast/>
- Eastern comma butterfly: <http://blog.uvm.edu/hoppenin/2011/06/09/hop-pest-eastern-comma/>



Research

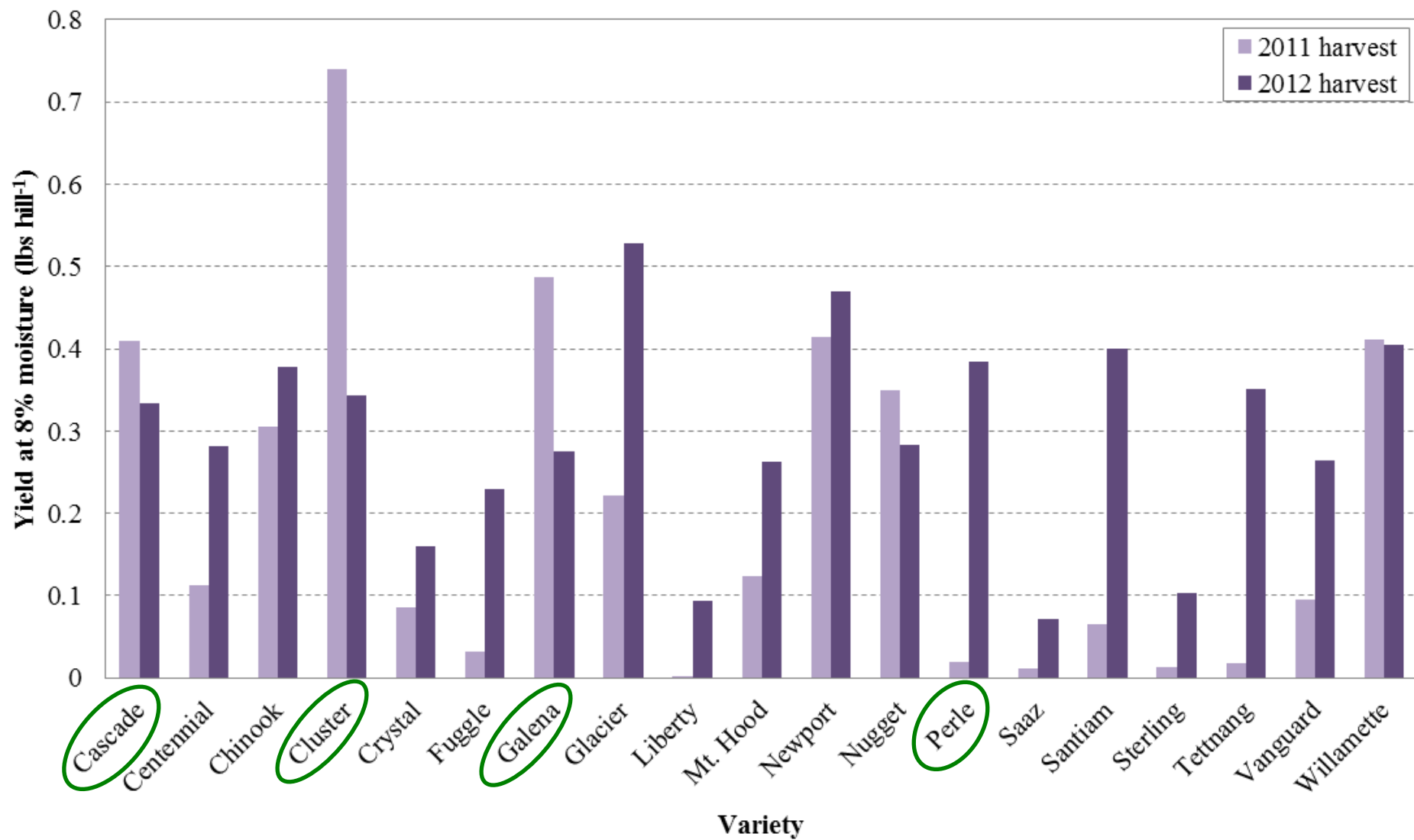


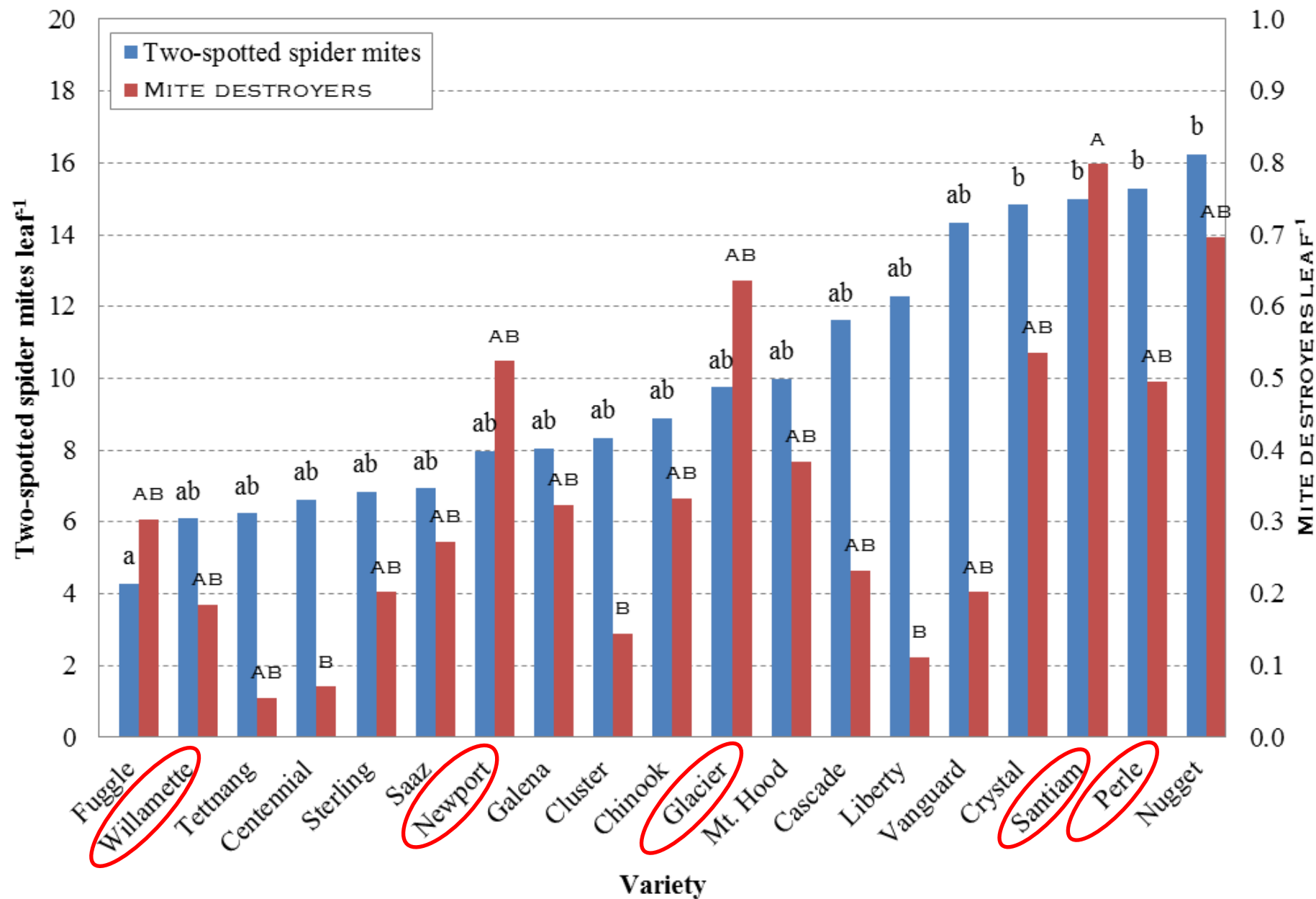
Outreach & Networking



Outreach & Networking

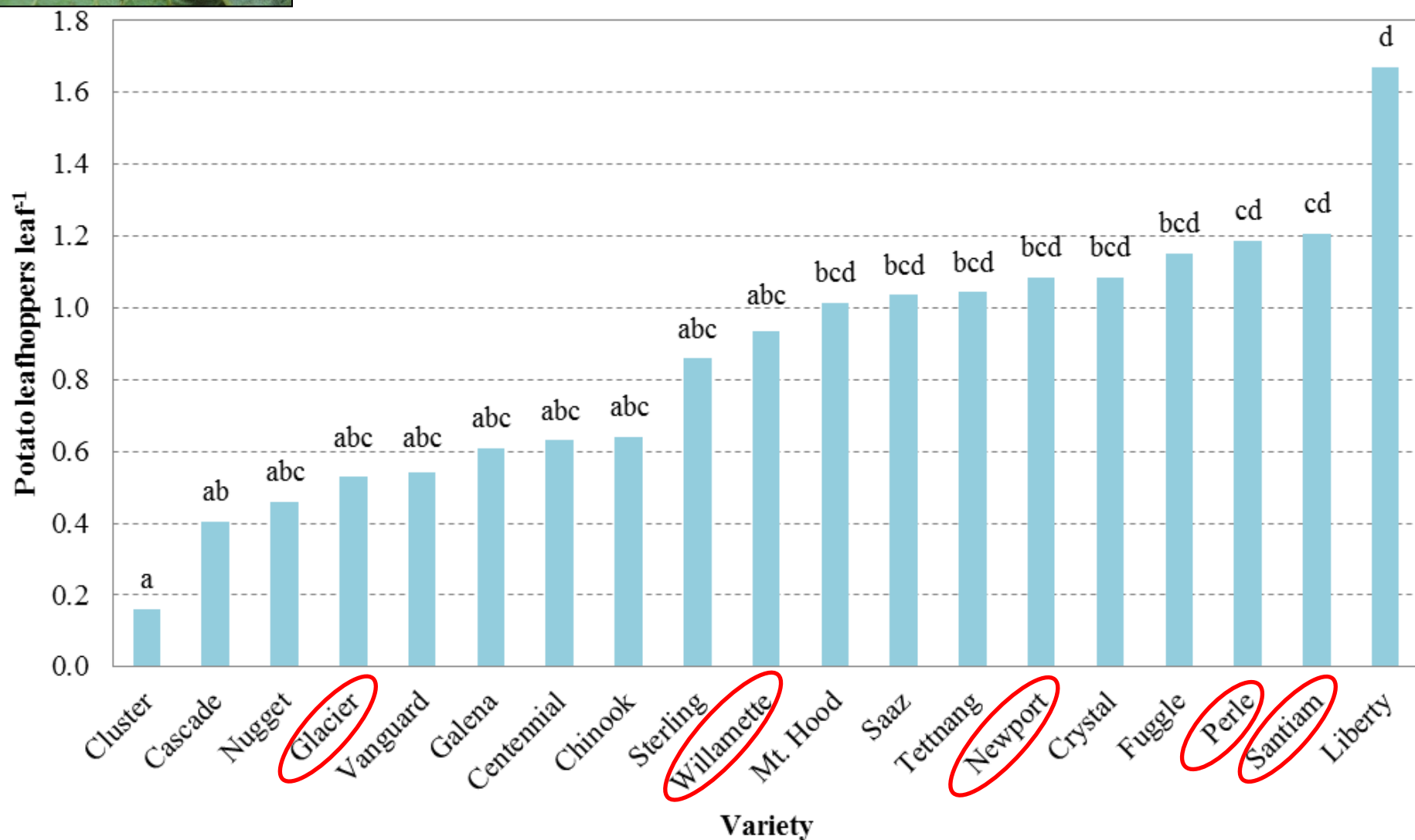




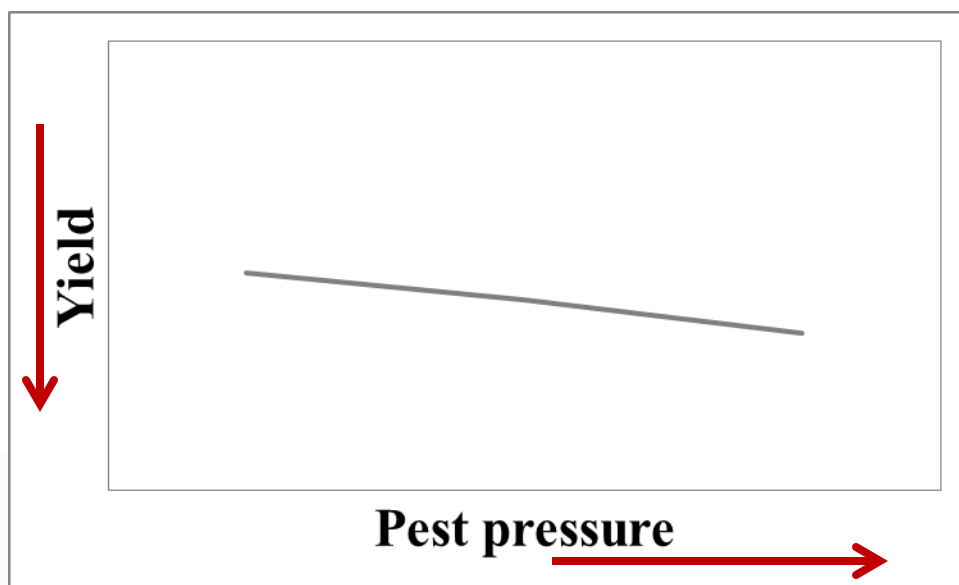


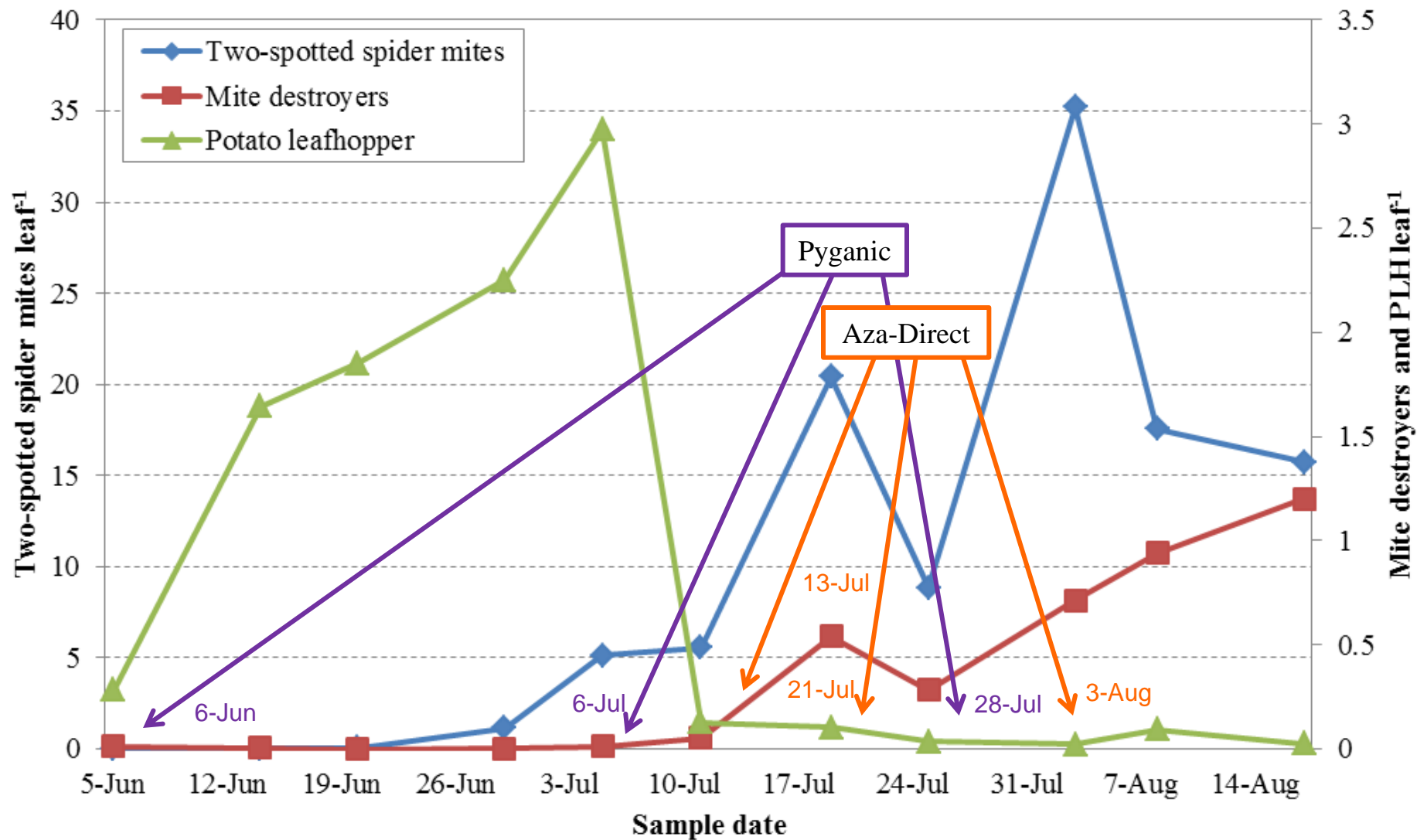


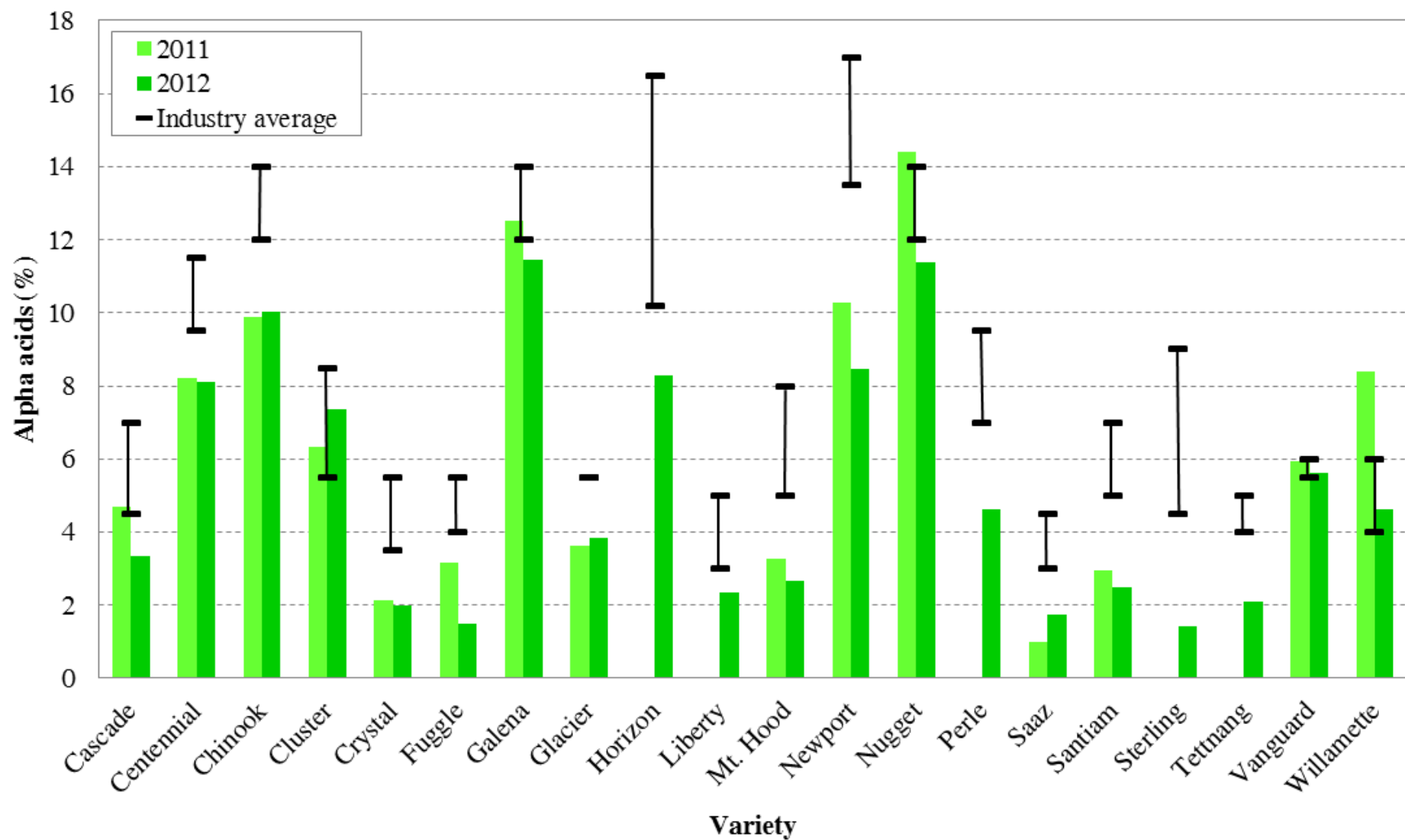
Leafhopper preference?

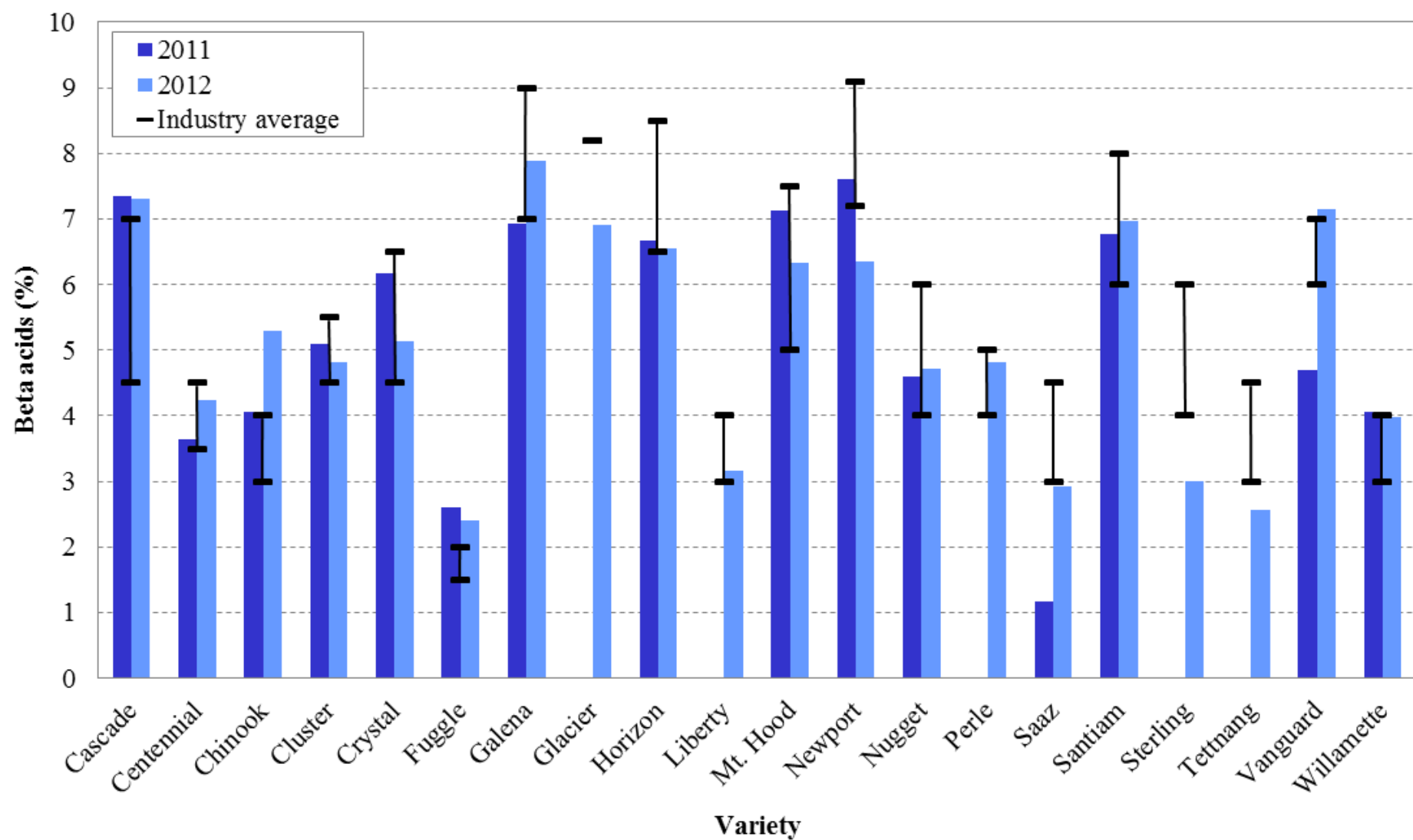


Measurement	r	Yield Probability level
Weeks above TSSM threshold	-0.334	0.0075
Cumulative mite days	-0.336	0.0072
Weeks above PLH threshold	-0.239	0.0755
Cumulative PLH days	-0.220	0.1038
PLH incidence across season	-0.223	0.0983

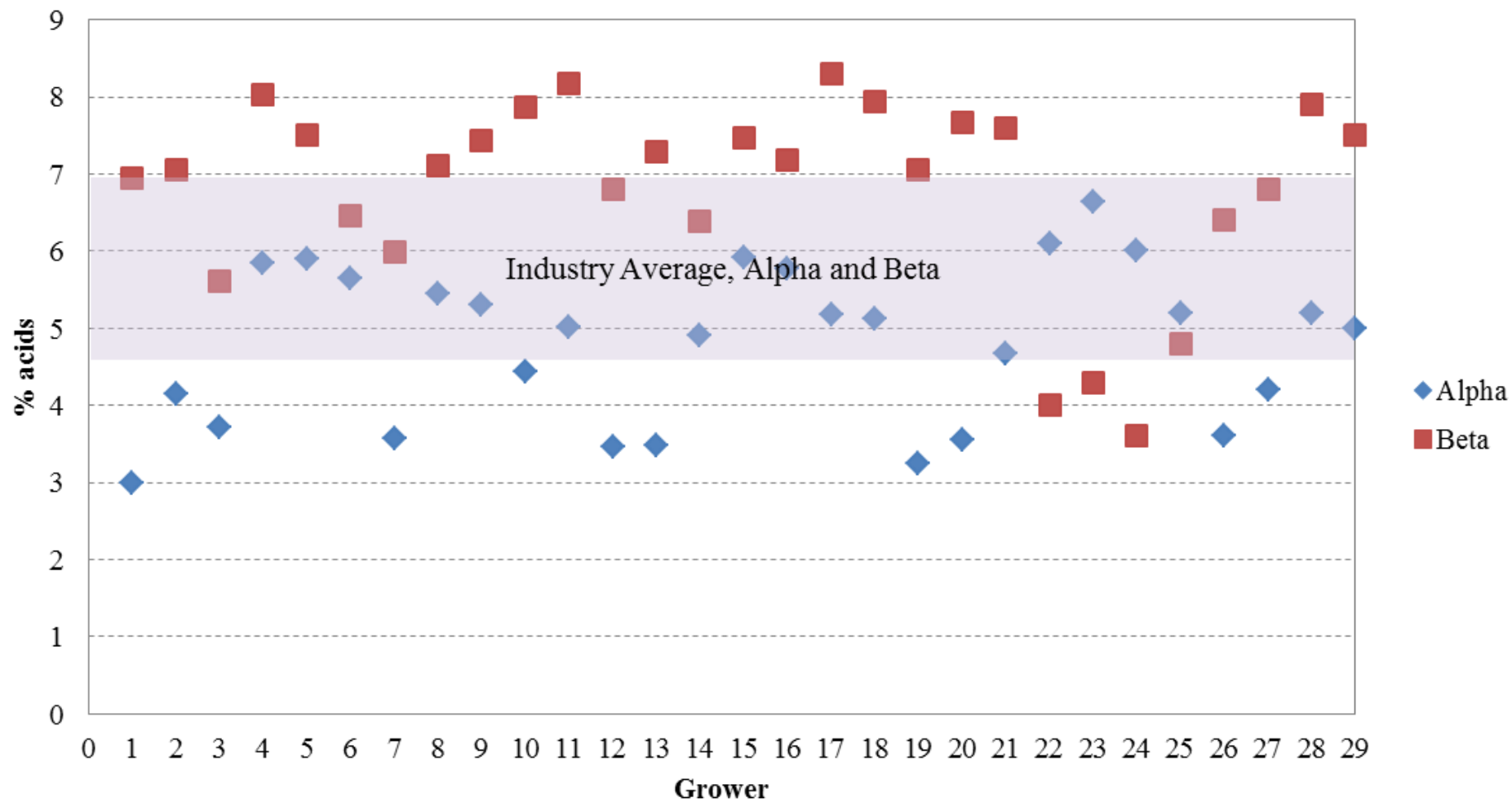








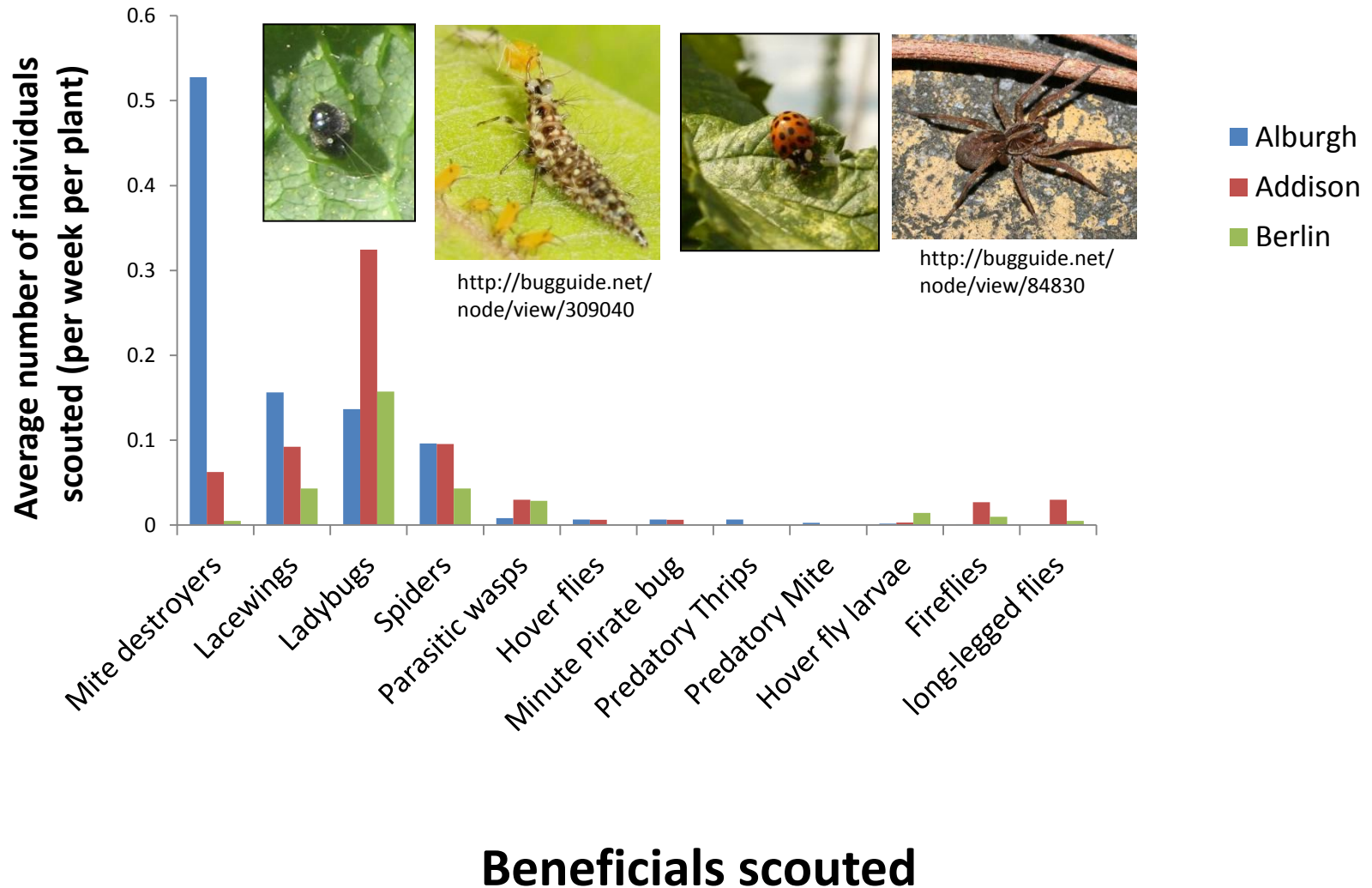
Cascade



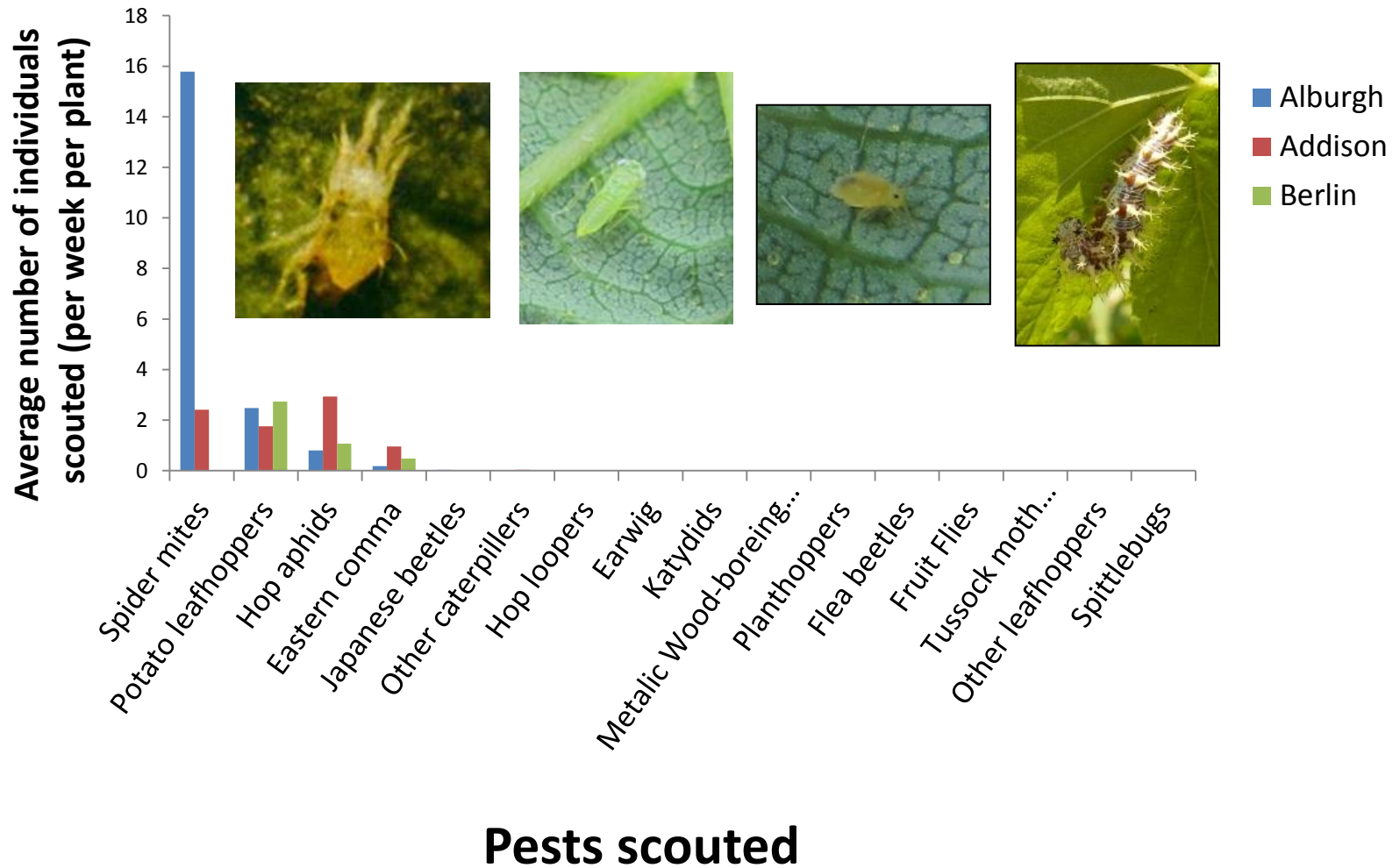
Centennial



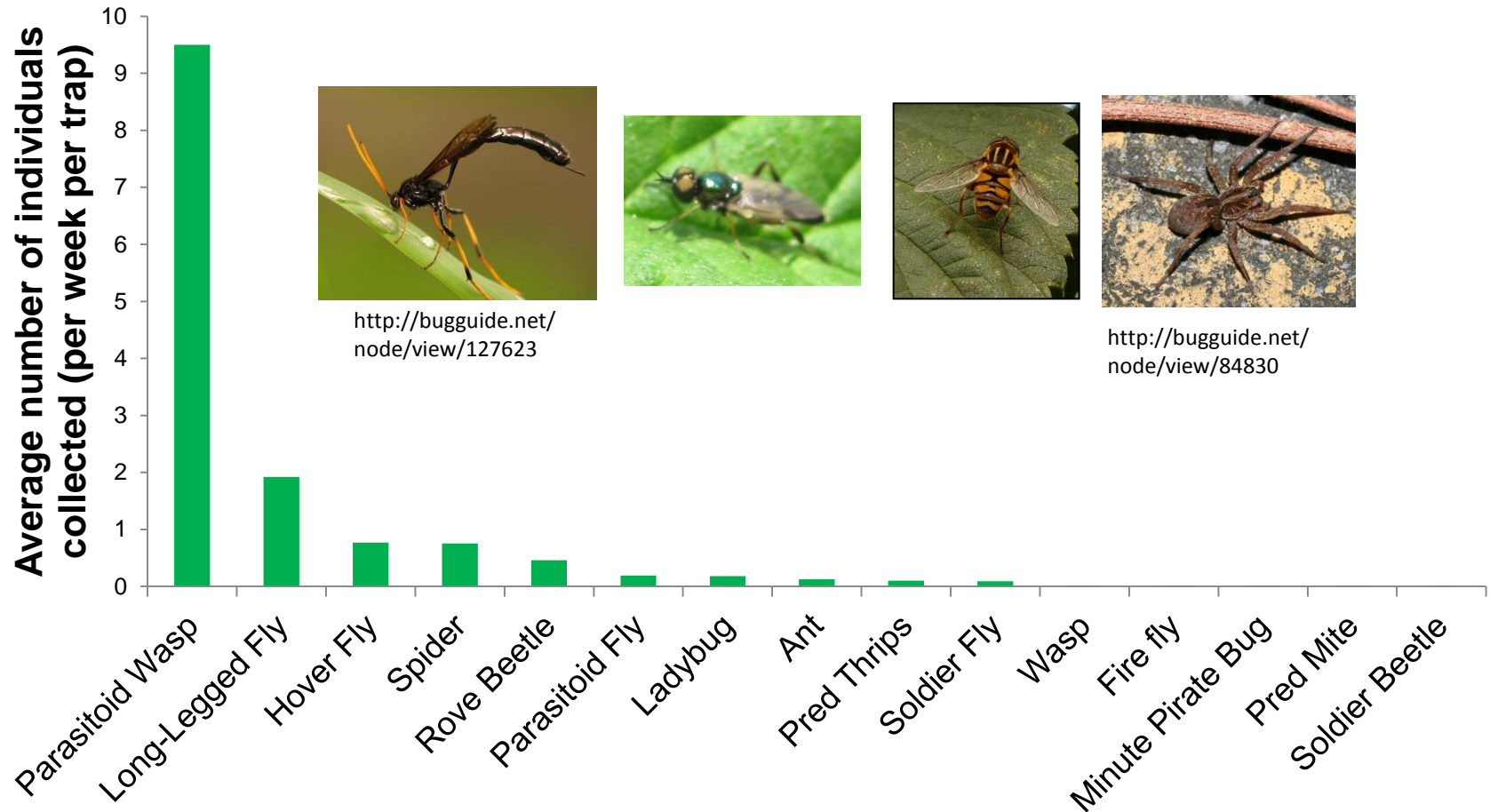
Getting to know your neighbors



Getting to know your neighbors

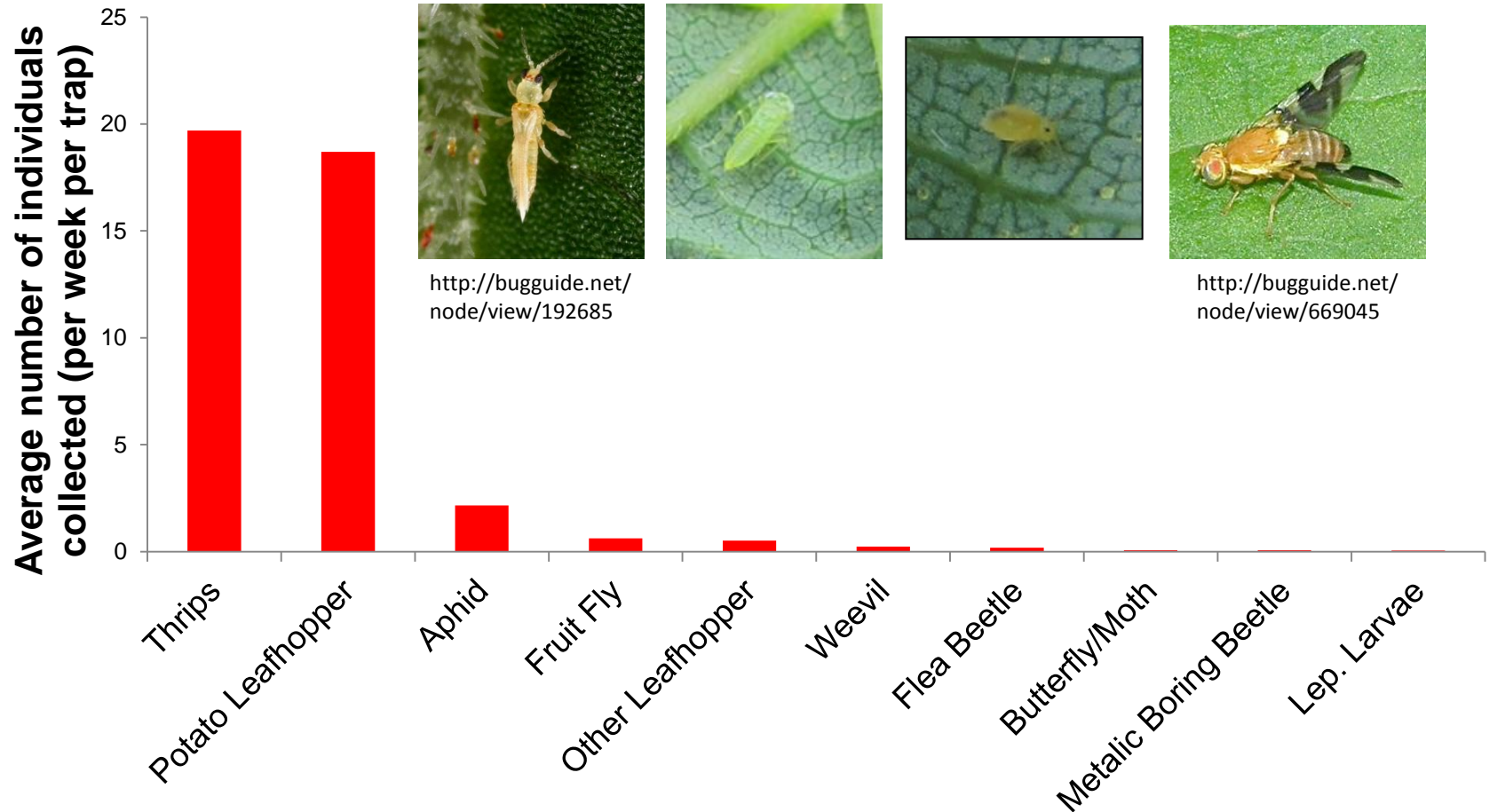


Getting to know your neighbors



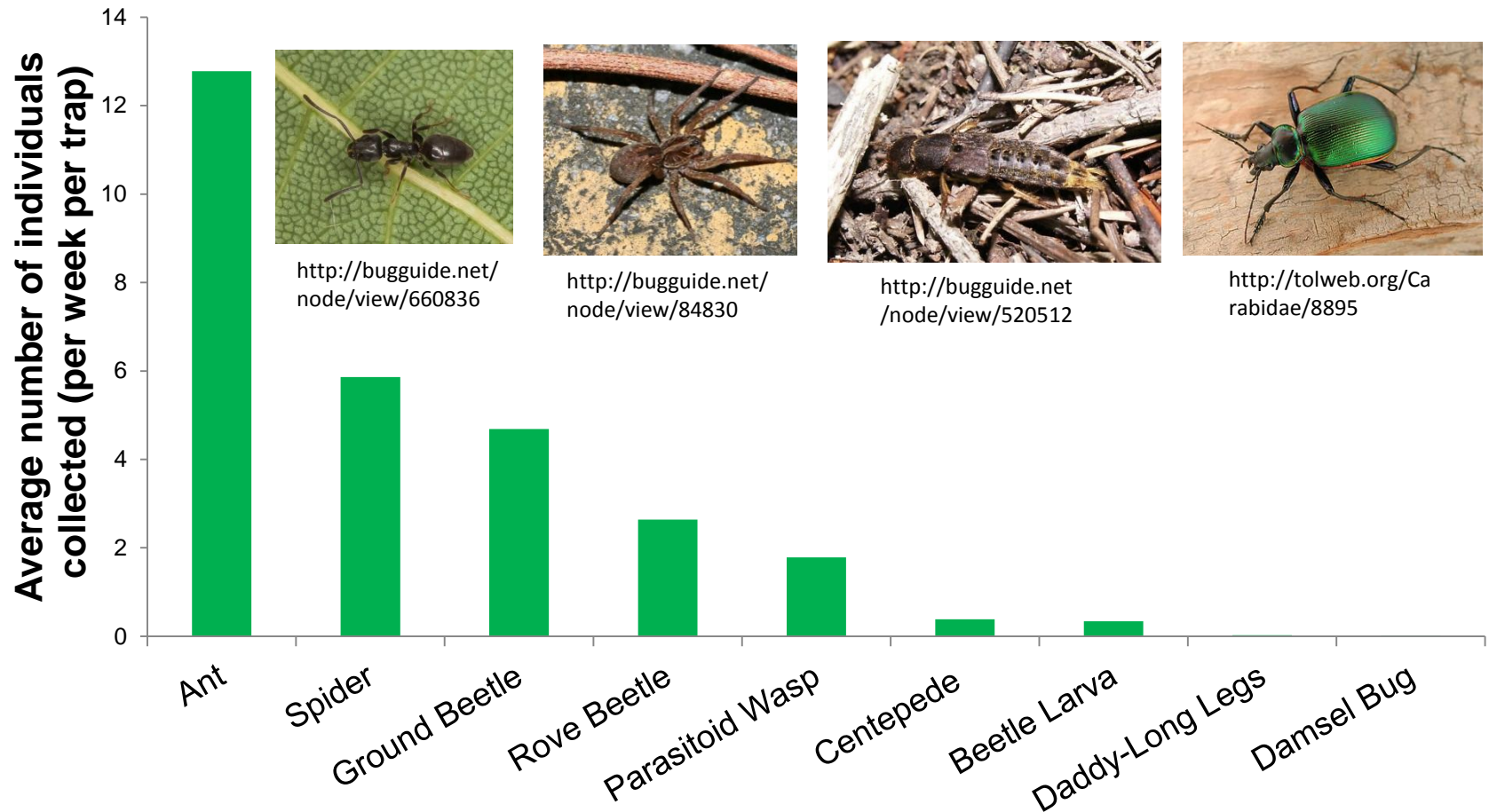
Beneficials on Sticky Traps

Getting to know your neighbors



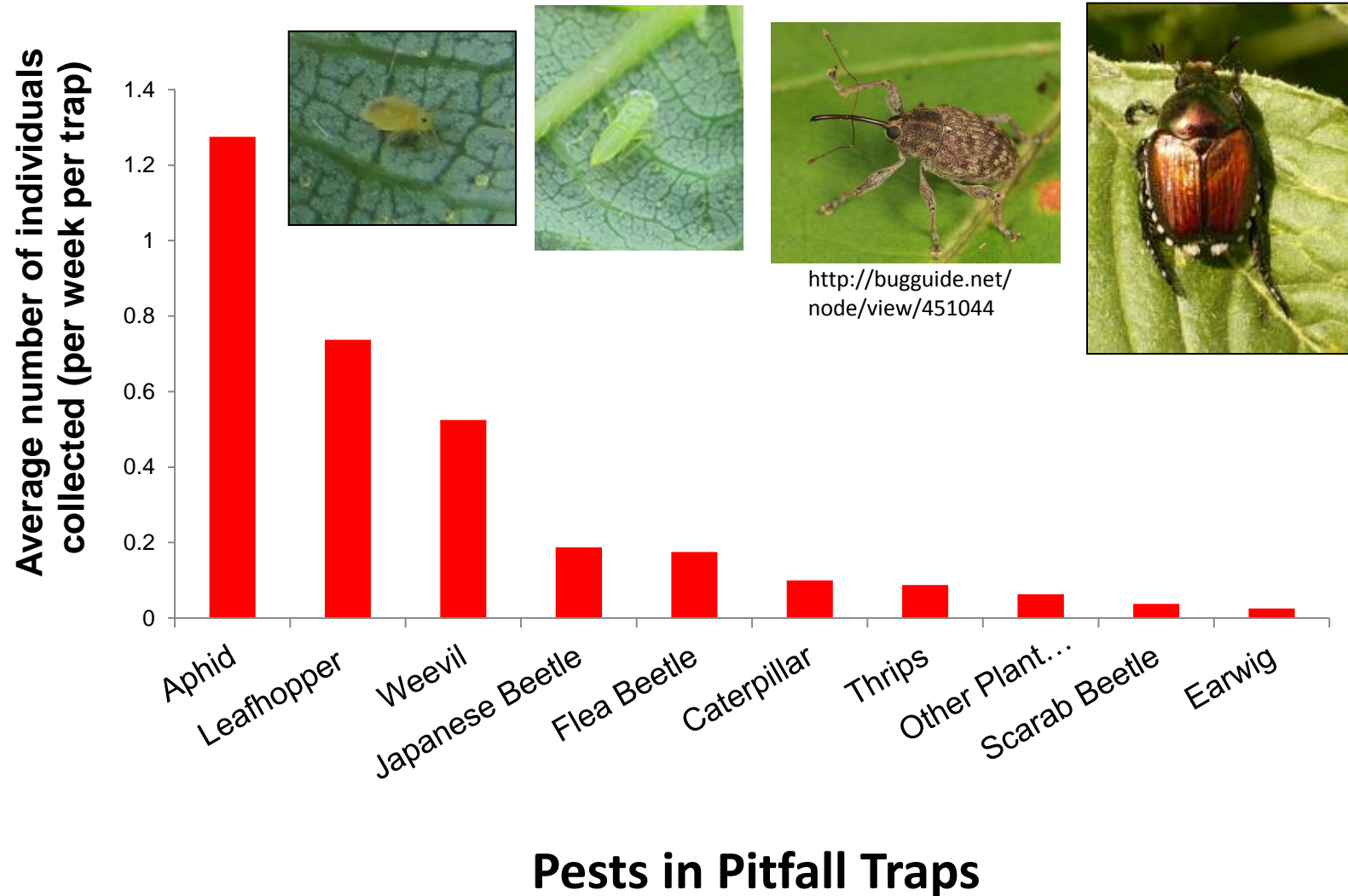
Pests on Sticky Traps

Getting to know your neighbors



Beneficials in Pitfall Traps

Getting to know your neighbors



Thank you to our sponsors!!

