



DIRECTOR'S NOTES



Janie Cohen

This fall we celebrate two milestones in the life of the Fleming Museum: the 75th anniversary of the Museum's founding, and the opening of the James B. Petersen Memorial Gallery of Native American Cultures.

The Fleming Museum opened to the public in the summer of 1931, established by the University of Vermont to serve as an educational institution for the people of Vermont and to support learning within the University. Through all of the changes that have occurred in the intervening decades, the fundamental role of the Fleming remains unchanged: a place for all to gather and experience the artistic achievements of cultures across the globe and across millennia. In service of that mission and in recognition of our 75th year, on October 13 we open the Petersen Memorial Gallery, presenting the Fleming Museum's outstanding collection of Native American art and artifacts. This long-term gallery honors the late Jim Petersen, internationally esteemed anthropologist and beloved UVM colleague and teacher. Jim was closely involved with the Fleming's Native American collections for many years and was a guiding force in the conceptual design of the Gallery. We honor his memory in the naming of the Museum's newest permanent-collection gallery.

Opening September 5th in the Fleming's Wolcott Gallery is *Aesthetics of Fire*, offering an opportunity to see the work of two of the country's leading glass artists, Tony Jojola and Preston Singletary. At the same time in the Wilbur Room, *Fleming at 75: From Curator's Cabinet to Modern Museum* presents an intriguing look at the Museum's history. Finally, *Colors of the Amazon: Featherworks from the Nalin and Petersen Collections*, which opened this summer, continues through November 19th in the Museum's East Gallery. Jim Petersen's memory lives on in this exhibition as well: the brilliantly colored feather artifacts generously loaned by his wife, Jennifer Brennan, reflect Jim's passion for the Brazilian rainforest and for the research and colleagues that drew him back to the Amazon over a period of many years.

Please join us at 5:30 on October 13th to enjoy the beauty, drama, and spirit of diverse Native American and Amerindian cultures, take part in the Petersen Memorial Gallery opening, and help us celebrate 75 years of arts and culture at the Fleming Museum.

STAFF

Janie Cohen, Director
Merlin Acomb, Exhibition Designer and Preparator
Chris Dissinger, Public Relations and Marketing Manager
Christina Fearon, Curator of Education and Public Programs
Lewis Fleischman, Museum Store Manager
Stephanie Glock, Financial Manager
Evelyn C. Hankins, Curator of Collections and Exhibitions
Kristen Kilbashian, Administrative Assistant / Events Coordinator
Margaret Tamulonis, Manager of Collections and Exhibitions

BOARD OF ADVISORS

Philip H. Hoff, Esquire, Honorary Chair
Lorna-Kay Peal, Chair
Carole Burack
J. Brooks Buxton '56
Bill Davison
Eleazer D. Durfee '86
Nancy Dwyer
Laura T. Fishman
Paul Gates '07
Joan Kalkin
Stephen Kelly '85
Carroll Lewin
Ellen McCulloch-Lovell
Jane Michaud '76
David Nalin
Harry D. Nelson Jr. '50
Sylvia Nelson
Karen Schlansky
David Spector '56
Richard Weintraub '98

www.flemingmuseum.org

FALL RECEPTION

For Fleming Museum Members, the Academic Community & the Public

FRIDAY, OCTOBER 13
5:30 – 7:30 PM
REGULAR ADMISSION

Opening:
The James B. Petersen Memorial Gallery of Native American Cultures

The Aesthetics of Fire: Glass Sculpture by Tony Jojola and Preston Singletary

Fleming at 75: From Curator's Cabinet to Modern Museum

Live Brazilian Jazz
with Dominique Gagne and Geoff Kim
Cash Bar and Hors D'Oeuvres



Colchester Jar, 1400-1550 . Pottery. Gift of Luther Loomis 1827.11A



Inside:
Preston Singletary (Tlingit), *Eagle Drum*, 2005. Blown and sandcarved glass. Collection of Dr. Scott M. Karlin.



www.flemingmuseum.org

Robert Hull Fleming Museum
61 Colchester Avenue
University of Vermont
Burlington, VT 05405

Information: (802) 656-2090
Offices: (802) 656-0750
Fax: (802) 656-8059
E-mail: fleming@uvm.edu

NONPROFIT ORG
U.S. POSTAGE
PAID
BURLINGTON, VT
PERMIT NO. 143

MAIL TO:

Cover:
Laying of the cornerstone of the Robert Hull Fleming Museum on July 1st, 1930. Long-time University collections curator George Perkins is pictured in the right foreground with beard and hat.



ON VIEW

Exhibitions and Events | Fall 2006



FALL CALENDAR 2006

SEPTEMBER 5 EXHIBITIONS OPEN The Aesthetics of Fire: Glass Sculpture by Tony Jojola and Preston Singletary and Fleming at 75: From Curator's Cabinet to Modern Museum. **5** Fall Hours Begin **8** SPECIAL LECTURE Amazonian Featherwork and Body Painting: Indigenous Notions of Nature and Personhood. Michael Heckenberger, 5:30 PM **17** FILM The Amazon, 3:00 PM **27** NOONTIME CAFÉ AND PROGRAM Tropical Ecology of the Amazonian Rainforest. Lee Harper, 12:15 PM

OCTOBER 11 NOONTIME CAFÉ AND PROGRAM Yarupari: Flute Music Inspired by the Amazon. Dominique Gagne, 12:15 PM **13** OPENING RECEPTION Fall Exhibitions and The James B. Petersen Memorial Gallery of Native American Cultures, 5:30-7:30 PM **14** GALLERY TALK with artist Tony Jojola, 2:00 PM **22** FILM The Amazon, 3:00 PM **25** NOONTIME CAFÉ AND PROGRAM The Ecological Economics of the Rainforest. Joshua Farley, 12:15 PM **26** FILM The Business of Fancy Dancing, 7:00 PM

NOVEMBER 4 COMMUNITY FAMILY DAY, 11 AM - 4 PM **8** NOONTIME CAFÉ AND PROGRAM Against the Darkness: Vermont Abenaki History 1790 - 2005. Fred Wiseman, 12:15 PM **12** FILM The Amazon, 3:00 PM **16** FILM Skins, 7:00 PM **19** EXHIBITION CLOSES Colors of the Amazon: Featherworks from the Nalin and Petersen Collections **29** NOONTIME CAFÉ AND PROGRAM Ancient Curios, Devil Masks, and Vermont Landscapes: The Fleming Collects. Margaret Tamulonis, 12:15 PM **30** FILM Powwow Highway, 7:00 PM

EXHIBITIONS

JULY 20 - NOVEMBER 19
Colors of the Amazon: Featherworks from the Nalin and Petersen Collections

SEPTEMBER 5 - DECEMBER 15
The Aesthetics of Fire: Glass Sculpture by Tony Jojola and Preston Singletary

SEPTEMBER 5 - DECEMBER 15
Fleming at 75: From Curator's Cabinet to Modern Museum

Museum Hours:

Labor Day - April 30: Tuesday - Friday, 9 AM - 4 PM Saturday & Sunday, 1 - 5 PM

May 2 - Labor Day: Tuesday - Friday, Noon - 4 PM Saturday & Sunday, 1 - 5 PM

Museum Galleries Closed Mondays and Major Holiday Weekends:

Labor Day Weekend, September 2 - 4; Thanksgiving Weekend, November 23 - 27;


UVM Winter Recess, December 16 - January 15.

University of Vermont
61 Colchester Avenue
Burlington, VT 05405
Offices: (802) 656-0750
Information: (802) 656-2090
Fax: (802) 656-8059
E-mail: fleming@uvm.edu

Admission

\$5 adults, \$10 family, \$3 students and seniors. Free to Museum members; UVM, Burlington College, Champlain College, Community College of Vermont, and St. Michael's College faculty, staff, and students; and children 6 and under.

Directions and Parking: Parking is available in the visitor lot located between the Museum and Fletcher Allen Health Care. Additional parking information and directions are available on our web site, in the Museum brochure, or at 656-2090.

 The Fleming Museum is wheelchair accessible and provides reasonable accommodations to persons with disabilities. Please contact us in advance to arrange accommodations.



NEW EXHIBITIONS

The James B. Petersen Memorial Gallery of Native American Cultures
OPENS OCTOBER 13, 2006

The Robert Hull Fleming Museum is pleased to announce the opening of the James B. Petersen Memorial Gallery of Native American Cultures. This newly-installed, long-term exhibition explores the material cultures and artistic traditions of indigenous peoples of North America through art and artifacts from the Museum's collections. Drawing upon the unique breadth and strengths of the Fleming's collections, the exhibition features outstanding examples of Navajo textiles, Plains quillwork and beadwork, carvings from the Northwest Coast, pottery from the Southwest, baskets from California and New England, and lithics from Vermont, among others. Highlights include a stunning Chilkat blanket, examples of both historical and contemporary Abenaki baskets, and the "Colchester Jar," which dates back to ca. 1500 and was unearthed in Colchester in the 1820s. Through objects that date from pre-contact to the present, the installation explores a number of themes, including the continuity of cultural traditions, innovation resulting from exchange between Native American cultural groups, and the impact of contact with peoples of European descent. Moreover, the gallery highlights diverse views and approaches by displaying texts by Native Americans from both local and national tribes alongside those by Museum staff and University of Vermont faculty.

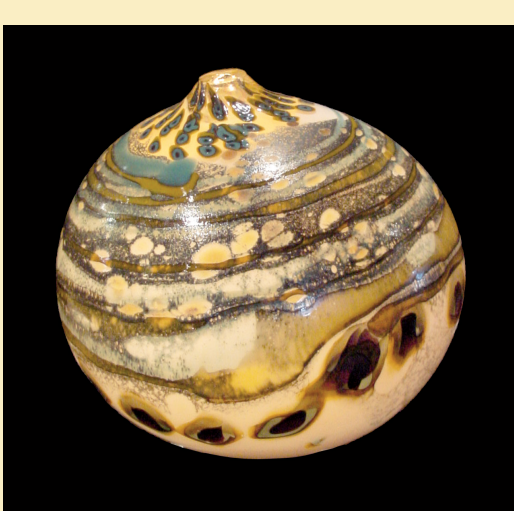


The late James B. Petersen, professor of anthropology at the University of Vermont, was a guiding force behind this installation. This gallery is dedicated to Jim, who selflessly shared his scholarly expertise and his passionate commitment toward the goal of understanding and celebrating the art of the original Americans.

Grizzly Bear Claw Moccasins (Sioux), 19th century. Rawhide, beads, metal, horsehair, grizzly bear claws. Ogden B. Read Collection 1881.3.73

The Aesthetics of Fire: Glass Sculpture by Tony Jojola and Preston Singletary
SEPTEMBER 5 - DECEMBER 15, 2006

Two of the most accomplished contemporary American artists working in glass, Tony Jojola and Preston Singletary create sculptures that bring together the time-honored forms of their Native American cultures with the methods and innovations of the American Studio Glass Movement. One of the earliest members of what would become a vital community of Native American glass artists, Tony Jojola (Isleta Pueblo) draws inspiration from the deeply rooted traditions of Pueblo basketry and pottery. His mesmerizingly colorful vessels, which feature drawing and relief elements in molten glass, push the limits of this complex and fragile medium in terms of both scale and technique. Preston Singletary (Tlingit) reconceives the distinctive designs and motifs - whaler's hats, ravens, and rattles - of his Northwest Coast heritage. Meticulously blown and sandblasted, Singletary's elegant sculptures bring together acute observation and a masterful technique. Jojola's and Singletary's artwork differ in style and technique; however, they share a passionate commitment to expanding and reinvigorating both their medium and their cultural traditions.



Tony Jojola (Isleta Pueblo), Seed Jar, 2004. Blown glass. Courtesy the artist.

Fleming at 75: From Curator's Cabinet to Modern Museum
SEPTEMBER 5 - DECEMBER 15, 2006



The Cannon Room, Fleming Museum, early 1930s. Named after sculptor and Burlington native Henry LeGrand Cannon, this gallery featured a recreation of Cannon's own "India Room" housing an eclectic collection of exotica from India, Tibet, and other Eastern countries he visited during his many travels. Typical of late nineteenth-century Victorian taste, the Cannon collection was bequeathed to UVM in 1895.

ning, the Fleming served both the University and the community beyond, hosting Mothers' Club meetings, artists' groups, student musical societies, and Saturday cartoons for kids. Fleming at 75 features items from the Museum's archives, including photographs, newspaper clippings, telegrams, letters, and artifacts. The individuals who formed the Fleming are found here, including Katherine Wolcott (Robert Hull Fleming's niece), George Henry Perkins (the first curator of the University's collection), and others. Photographs of the galleries from decades past, correspondence with collectors and friends, and other ephemera all reflect the Fleming's continuing tradition of education, exploration, and art.



Ritual Headdress (Orok), Wayana-Apalai, 20th century. Feathers, plant fiber, bark, cord, cotton. Gift of David R. Nalin, M.D. 2006.4.28

Colors of the Amazon: Featherworks from the Nalin and Petersen Collections
JULY 20 - NOVEMBER 19, 2006

The world's most diverse ecosystem, the Amazonian River Basin supports countless species of flora and fauna. It also is home to several hundred indigenous Amerindian cultures, which have sustained carefully balanced relationships with the surrounding environment for tens of thousands of years. Amidst this remarkable biodiversity, the brilliantly plumed birds of the rainforest, such as parrots, macaws, and toucans, are set apart by their inimitable array of eye-catching colors. These birds, moreover, figure prominently in the history, stories, and beliefs of many Amerindian tribes, who transform the birds' feathers into body ornaments and ceremonial objects that are at once dazzlingly beautiful and deeply symbolic.

Focusing on culture groups from the Brazilian region of the Amazon, including the Kayapó, Kuikuru, and Waiwai, Colors of the Amazon explores the distinctive styles, techniques, and symbolism developed by indigenous Amerindians, as well as the vital roles that featherworks play in ritual and social contexts. This exhibition features a collection recently

donated to the Museum by David R. Nalin, M.D., a member of the Fleming Museum's Board of Advisors, and objects belonging to the late University of Vermont anthropology professor, James B. Petersen, which were generously loaned by his wife, Jennifer Brennan.

Support for this exhibition has been provided by the Kalkin Family Exhibitions Endowment Fund and by Heritage Flight.



NOONTIME CAFÉ AND PROGRAMS

Programs begin at 12:15 PM on the Wednesdays listed below. Lunch is available for purchase in the Museum's Marble Court from 11:30 AM to 1:30 PM. Noontime programs sponsored by Global Village and GreenHouse residential learning communities.

Tropical Ecology of the Amazon Rainforest

SEPTEMBER 27

Lee Harper, conservation biologist and independent researcher

Yarupari: Flute Music Inspired by the Amazon

OCTOBER 11

Dominique Gagne, flutist and composer

The Ecological Economics of the Amazon Rainforest: Why Should We Care, What Should We Do?

OCTOBER 25

Joshua Farley, assistant professor, UVM Department of Community Development and Applied Economics; and research fellow, UVM Gund Institute for Ecological Economics

Against the Darkness: Vermont Abenaki History 1790-2005

NOVEMBER 8

Fred Wiseman, chair, Humanities Department, Johnson State College; and director, Abenaki Tribal Museum

Ancient Curios, Devil Masks, and Vermont Landscapes: The Fleming Collects

NOVEMBER 29

Margaret Tamulonis, Fleming Museum manager of collections and exhibitions

SPECIAL PROGRAMS

Lecture: Amazonian Featherwork and Body Painting: Indigenous Notions of Nature and Personhood

FRIDAY, SEPTEMBER 8, 5:30 PM

Michael Heckenberger, associate professor, Dept. of Anthropology, University of Florida

Film: The Amazon

SUNDAY, SEPTEMBER 17, 3 PM

SUNDAY, OCTOBER 22, 3 PM

SUNDAY, NOVEMBER 12, 3 PM

Artist's Talk

SATURDAY, OCTOBER 14, 2 PM

Gallery Talk/Conversation with Native American glass artist Tony Jojola.

FILM SERIES

A film series exploring Native American identity. Introduction and post-screening discussions will be led by Kenneth Mello, UVM assistant professor, ALANA U.S. Ethnic Studies Program and UVM Department of Religion. Sponsored by UVM's Living/Learning Center.

The Business of FancyDancing

THURSDAY, OCTOBER 26, 7 PM

An intriguing story about a successful, gay Native American poet from Spokane, who confronts his past when he returns to his childhood home on the reservation to attend the funeral of a dear friend. (103 min.)

Skins

THURSDAY, NOVEMBER 16, 7 PM

On South Dakota's Pine Ridge Indian Reservation, police officer Rudy Yellow Lodge's frustration leads him to take the law into his own hands in an effort to curb the violence and neglect he faces every day. (87 min.)

Powwow Highway

THURSDAY, NOVEMBER 30, 7 PM

Old friends Buddy Red Bow, an activist who is fighting to protect his community from developers, and Philbert Bono, a seeker of Native wisdom, set off together on a life-changing road trip from their reservation in Montana to Santa Fe, New Mexico. (83 min.)

Fletcher Free Library

OCTOBER 25 THE BUSINESS OF FANCYDANCING

NOVEMBER 15 SKINS

NOVEMBER 29 POWWOW HIGHWAY

The Fletcher Free Library will host a companion series about the books on which the films are based. The book discussion series will take place at the Library at 7:30 PM on the Wednesday evening before the film is shown.

KIDS AND FAMILIES

ART ADVENTURES

WEDNESDAYS, 3:30 - 5:00 PM

Ages 6-8: Sept. 6, 13, 20, 27, Oct. 4, and 11

Ages 9-11: Oct. 18, 25, Nov. 1, 8, 15, and 29

Fee: Museum Family Members \$35; General \$45

Art classes at the Fleming provide unique and exciting opportunities for children to explore the visual arts. University of Vermont art education students, supervised by their instructor Lisa Brunini Harvey, M. Ed., teach the classes for each age group.

Whether your child loves art or is curious to try something new, these classes offer individualized attention and the chance to experiment with a variety of mediums, such as painting, drawing, sculpture, and collage. At the conclusion of each series of classes, there will be a short reception beginning at 5:00 pm.

Community Family Day

SATURDAY, NOVEMBER 4, 11 am - 4 pm



Let your imagination soar as we explore the vitality of art and life in the Amazon. Inspired by the colorful birds and amazing creatures of the rainforest, Family Day art activities will include making feathered body ornaments, basketry designs, and even an anteater mask! Join us for a fun day of discovery at the Fleming Museum. No pre-registration required; \$3 fee at the door.