



McKendree Key, *Lake Champlain*, 2005 (detail). Digital chromogenic color print. Courtesy the artist.

## DIRECTOR'S NOTES



Vermont's leaf-peepers, our members, and the public a chance to enjoy the exhibition. So if you haven't yet seen *New Turf*, come take a look!

Also on view this fall is *Eadweard Muybridge: Studies in Locomotion*. On loan from the University of Vermont's Special Collections, this renowned 19th-century photographic study uses early stop-action technology to document and analyze the movement of humans and animals. And, from the Fleming's own collections, *Worlds of Tea* presents a beautiful selection of tea accessories from Asian and Western cultures.

In addition to our exhibitions, the Fleming Museum offers gallery talks, evening lectures, and family programs on a diverse and exciting range of subjects. In the month of October alone, come learn about modern interior design, early marketing of the New England landscape, theories on the murder of Tutankhamen, and tea cultures around the world. We look forward to sharing a wide world of art and enjoyment with you this fall at the Fleming Museum!

*Janie Cohen*  
Janie Cohen

## FALL RECEPTION

For the Academic Community,  
Members, and the Public

FRIDAY, SEPTEMBER 16  
5:30 – 7:30 PM

Celebrating

- *New Turf*
- *The Four Corners Series of Francis R. Hewitt*
- *Worlds of Tea*

Hosted by President Daniel Mark Fogel and  
Rachel Kahn-Fogel, with opening remarks  
at 6:15 PM.

Live Music by *Frost*

Cash Bar and Hors D'Oeuvres



Jane Fine, *Sugar Time*, 2003. Acrylic and ink on wood panel.  
Courtesy the artist and Pierogi, Brooklyn.

**STAFF**  
Janie Cohen, Director  
Merlin Acomb, Exhibition Designer and Preparator  
Chris Dissinger, Public Relations and Marketing Manager  
Christina Fearon, Curator of Education and Public Programs  
Lewis Fleischman, Museum Store Manager  
Evelyn C. Hankins, Curator of Collections and Exhibitions  
Kerri Macon, Financial Manager  
John Seyller, Adjunct Curator of Asian Art  
Margaret Tamulonis, Manager of Collections and Exhibitions  
Kim Trauceniek, Administrative Assistant / Events Coordinator

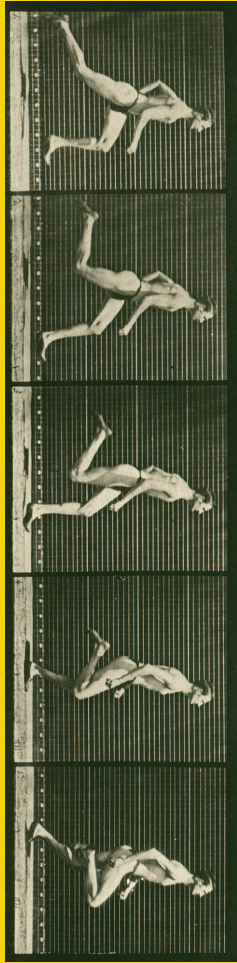
**BOARD OF ADVISORS**  
Philip H. Hoff, Esquire, Honorary Chair  
Lorna-Kay Peal, Chair  
J. Brooks Buxton '56  
Bill Davison  
Eleazer D. Durfee '86  
Nancy Dwyer  
Laura Fishman  
Joan Kalkin  
Stephen Kelly '85  
Carroll Lewin  
Laura Lienhard  
Jane Michaud '76  
David Nalin  
Harry D. Nelson Jr. '50  
Sylvia Nelson  
Karen Schlansky  
David Spector '56  
Richard Weintraub '98

**The UNIVERSITY of VERMONT**  
**FLEMING MUSEUM**  
[www.flemingmuseum.org](http://www.flemingmuseum.org)

**The UNIVERSITY of VERMONT**  
**FLEMING MUSEUM**  
[www.flemingmuseum.org](http://www.flemingmuseum.org)

Robert Hull Fleming Museum  
61 Colchester Avenue  
University of Vermont  
Burlington, VT 05405

Information: (802) 656-2090  
Offices: (802) 656-0750  
Fax: (802) 656-8059  
E-mail: [fleming@uvm.edu](mailto:fleming@uvm.edu)



Above:  
Eadweard Muybridge, *Running at a Half-Mile Gait* (detail),  
plate 60 from *Animal Locomotion: An Electro-Photographic  
Investigation of Consecutive Phases of Animal Movement, 1872-  
1885*. Originally published in 1887; 1979 edition. Gelatin silver  
print. Courtesy Special Collections, Bailey/Howe Library, UVM.

Cover:  
Louise Belcourt, *Hedge Painting, Grouping #1*, 2004. Oil on  
panel. Courtesy the artist and Jeff Bailey Gallery, New York.

MAIL TO:

NONPROFIT ORG  
U.S. POSTAGE  
**PAID**  
BURLINGTON, VT  
PERMIT NO. 143

# ONVIEW

Exhibitions and Events | Fall 2005



**The UNIVERSITY of VERMONT**  
**FLEMING MUSEUM**



# FALL CALENDAR 2005

SEPTEMBER 6 Fall Hours Begin 13 EXHIBITION OPENS *Worlds of Tea* 14 NOONTIME CAFÉ AND PROGRAM Earth Art: Frank Hewitt's *Four Corners Series* in Context. Bill Lipke, 12:15 PM 16 FALL RECEPTION *New Turf*, *Worlds of Tea*, *The Four Corners Series of Francis R. Hewitt*. Music, 5:30-7:30 PM 28 NOONTIME CAFÉ AND PROGRAM From Georgia O'Keeffe to Brice Marden: The Abstracted Landscape in American Art. Evelyn C. Hankins, 12:15 PM

OCTOBER 2 GALLERY TALK *New Turf*, 3 PM 4 EXHIBITION OPENS *Eadweard Muybridge: Studies in Locomotion* 6 PROGRAM Selling Good Design: Promoting the Early Modern Interior. Marilyn Friedman, 5:30 PM 12 NOONTIME CAFÉ AND PROGRAM Inventing a New England Landscape. Dona Brown, 12:15 PM 16 PROGRAM The Murder of Tutankhamen. Bob Brier, 3 PM 26 NOONTIME CAFÉ AND PROGRAM Tea Cultures of the World: A Talk and Tasting. Matthew Frayer, 12:15 PM

NOVEMBER 5 COMMUNITY FAMILY DAY, 11 AM - 4 PM 9 NOONTIME CAFÉ AND PROGRAM Muybridge and Technologies of Vision. Sarah Betzer, 12:15 PM 16 STORE HOLIDAY SALE (Members Only), Regular Hours 17-20 STORE HOLIDAY SALE (General Public), Regular Hours 20 GALLERY TALK *Eadweard Muybridge*, 3 PM

## EXHIBITIONS

MAY 17 – SEPTEMBER 18  
*The Four Corners Series*  
of Francis R. Hewitt

JUNE 14 – SEPTEMBER 2  
Familiar Terrain:  
Landscapes from the  
Permanent Collection

JULY 6 – OCTOBER 30  
*New Turf*

SEPTEMBER 13 - DECEMBER 16  
*Worlds of Tea*

OCTOBER 4 - DECEMBER 16  
*Eadweard Muybridge:  
Studies in Locomotion*

### Museum Hours:

Labor Day – April 30: Tuesday – Friday, 9 AM – 4 PM Saturday & Sunday, 1 – 5 PM  
May 1 – Labor Day: Tuesday – Friday, Noon – 4 PM Saturday & Sunday, 1 – 5 PM

### Museum Galleries Closed Mondays and Major Holiday Weekends:

Labor Day Weekend, September 3 – 5; Thanksgiving Weekend, November 24 - 27  
UVM Winter Recess, December 17, 2005 - January 16, 2006

**Directions and Parking:** Parking is available in the Visitor Lot located between the Museum and Fletcher Allen Health Care. Additional parking information and directions are available on our Web site, in the Museum brochure, or at 656-0750.

University of Vermont  
61 Colchester Avenue  
Burlington, VT 05405  
Offices: (802) 656-0750  
Information: (802) 656-2090  
Fax: (802) 656-8059  
E-mail: [fleming@uvm.edu](mailto:fleming@uvm.edu)



The Fleming Museum is wheelchair accessible and provides reasonable accommodations to persons with disabilities. Please contact us in advance to arrange accommodations.

### Admission

\$5 adults, \$10 family, \$3 students and seniors.  
Free to Museum members; UVM, Burlington College, Champlain College, Community College of Vermont, and St. Michael's College faculty, staff, and students; and children 6 and under.



## NEW EXHIBITIONS



Tom Fruin, *Project Survey*, 2002-3. Found drug bags, paper cigar bands, and thread. Courtesy Mike Weiss Gallery, New York.

### New Turf

JULY 7 – OCTOBER 30, 2005  
East Gallery

Upending conventional notions about the means by which we represent the landscape, *New Turf* brings together fifteen artists from across the nation who draw inspiration from the rural, urban, and suburban environments around them. Since the early 19th century, American national identity has been defined, in large part, by the country's vast and varied terrain. Today, the American landscape encompasses a complex – and increasingly contested – amalgam of spaces as

the country engages in fierce debates over sprawl, urban gentrification, privacy, land-use regulation, conservation, and immigration. Featuring paintings, drawings, photographs, site-specific installations, and a sound work, *New Turf* testifies to a fresh attentiveness on the part of contemporary artists to this shifting terrain.

Exhibited artists: Anne Appleby, Louise Belcourt, Janice Caswell, Marsha Cottrell, Jane Fine, Tom Fruin, Richard Garrison, John Hudak, McKendree Key, Marie Krane / Cream Co., Sandy Litchfield, David Maisel, Sam Prekop, Lordy Rodriguez, and Gail Salzman.

### Eadweard Muybridge: Studies in Locomotion

OCTOBER 4 – DECEMBER 16, 2005  
Wolcott Gallery

Eadweard Muybridge (1830-1904) is recognized for his pioneering series of photographs documenting human and animal locomotion. In 1872, Muybridge was hired by Leland Stanford, former governor of California, to settle a wager regarding the movement of a trotting horse's legs: at issue was whether all four of the horse's hooves were ever simultaneously off the ground. Fascinated by the problem of documenting motion, Muybridge in the following decades invented an array of photochemical techniques and elaborate mechanical devices that enabled him to break down complex kinetic movements into a revealing sequence of still photographs. In 1887, Muybridge published an eleven-volume, 781 plate set that featured humans (men, women, and children, draped and undraped) and animals (horses, ostriches, and elephants, among others) engaged in an assortment of activities, ranging from walking, running, and descending stairs to pole-vaulting, wrestling, and curtsying. This exhibition features examples of Muybridge's groundbreaking locomotion studies, generously loaned to the Museum by Special Collections at UVM's Bailey/Howe Library.



Eadweard Muybridge, 'Ruth' Bucking and Kicking, plate 659 from *Animal Locomotion: An Electro-Photographic Investigation of Consecutive Phases of Animal Movement*, 1872-1885. Originally published in 1887; 1979 edition. Gelatin silver print. Courtesy Special Collections, Bailey/Howe Library, UVM.

### Worlds of Tea

SEPTEMBER 13 – DECEMBER 16, 2005  
Wilbur Room



Teapot, ca. 1720-1726. Royal Porcelain Manufacturing, Germany. Bequest of Reverend Louis Arthur 1940.32.81

According to legend, the first cup of tea was brewed in China in the 3rd century B.C.E., when Shen Nong (the Divine Farmer) chanced upon a tea plant while sampling herbs or, in another version of the discovery narrative, accidentally dropped some leaves into a pot of hot water. Although used occasionally for medicinal purposes, tea was not consumed in other Asian countries until the Song Dynasty (960-1279 C.E.), when Zen Buddhist monks introduced the herb to Japanese and Tibetan markets. By the mid-17th century, Dutch traders were regularly importing tea

throughout Europe, though the prohibitive cost restricted consumption to the privileged classes and members of the royal court. Today, tea has become a commonly consumed beverage and is grown in more than 50 countries and exported around the world. Moreover, increasing demand for rare, high-quality leaves has created a vibrant new market for specialty boutique teas.

*Worlds of Tea* explores objects and rituals associated with tea in various Western and Asian cultures. Drawing from the Fleming's decorative arts collection, this exhibition features an array of objects, ranging from a Japanese Satsuma tea caddy and an East Indian teapot to examples of blue and pink Staffordshire earthenware and a copper tea kettle that belonged to Ethan Allen during the Revolutionary War.

### Spotlight on Recent Acquisitions:

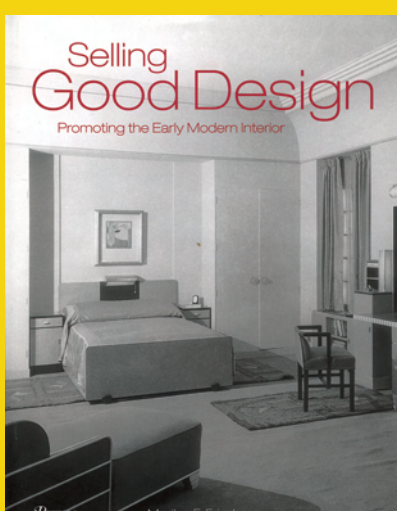
#### Edward Ruscha

The Fleming Museum is excited to announce the recent acquisition of a lithograph by Edward Ruscha (b. 1937), one of America's most influential postwar artists. A painter, photographer, and printmaker, Ruscha is perhaps best known for works that commingle American vernacular architecture and icons, such as gas stations or the Hollywood sign, with seemingly unrelated language drawn from popular culture. His flat, graphic style, reminiscent of commercial design, infuses his compositions with an irreverent, deadpan sense of humor. *Ship* (1986) exemplifies Ruscha's innovative approach to printmaking: he achieved the soft-edge, silhouetted form by airbrushing car varnish onto a lithographic stone.



Edward Ruscha, *Ship*, 1986. Lithograph. Anonymous gift 2005.2

## SPECIAL EVENT



**Selling Good Design:  
Promoting the Early Modern Interior**  
OCTOBER 6  
5:30-6:30 PM with reception to follow in the Marble Court  
Hosted by the Fleming Museum Advisory Board

Historian Marilyn Friedman will present an illustrated history of exhibitions at trend-setting department stores that popularized modern design in the late 1920s, featuring designers such as Josef Hoffmann, Gio Ponti, William Lescaze, Kem Weber, and Paul Frankl. This special lecture will illuminate a little-known and remarkable era of Modernism in America. Reception to follow in the Marble Court.

## NOONTIME CAFÉ AND PROGRAMS

Programs begin at 12:15 PM on the Wednesdays listed below. Lunch is available for purchase in the Museum's Marble Court from 11:30 AM to 1:30 PM.

Earth Art: Frank Hewitt's *Four Corners Series* in Context  
SEPTEMBER 14  
Bill Lipke, professor emeritus, Department of Art, UVM

From Georgia O'Keeffe to Brice Marden: The Abstracted Landscape in American Art  
SEPTEMBER 28  
Evelyn C. Hankins, curator of collections and exhibitions, Fleming Museum



Lordy Rodriguez, *Untitled Island #006*, 2004. Ink on paper. Courtesy Clementine Gallery, New York.

Inventing a New England Landscape  
OCTOBER 12

Dona Brown, associate professor, Department of History, UVM; director of the Center for Research on Vermont and Vermont Studies Program, UVM

Tea Cultures of the World:  
A Talk and Tasting  
OCTOBER 26

Matthew Frayer, Dobrá Tea House

Muybridge and Technologies of Vision  
NOVEMBER 9

Sarah Betzer, assistant professor, Department of Art, UVM

## SUNDAY PROGRAMS

Join us for our special programs at 3 PM.

Gallery Talk: *New Turf*

OCTOBER 2  
with exhibition curator Evelyn C. Hankins

Program: The Murder of Tutankhamen

OCTOBER 16  
Bob Brier, senior research fellow, Long Island University at C.W. Post Campus; director, National Endowment for the Humanities' Egyptology Today Program.

Gallery Talk: Eadweard Muybridge

NOVEMBER 20  
with education curator Christina Fearon

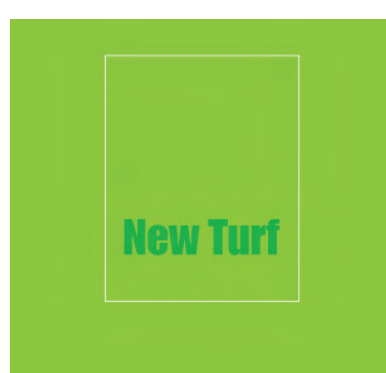
## MUSEUM STORE

### Holiday Sale

NOVEMBER 16 Members Only  
NOVEMBER 17-20 General Public

The Fleming Museum Store will hold its annual Holiday Sale featuring a variety of art-related merchandise including matted prints, games, music CDs, art kits, jewelry, books, and more. Enjoy live music and refreshments on Saturday, November 19, from 1-4 PM.

Coming soon to the Museum Store: *Look, Click, Print* — a service that offers custom reproductions of a select and growing number of art works from the Fleming's collection.



The Museum Store is featuring a 48-page catalogue that accompanies the exhibition *New Turf*. The catalogue includes an essay by the curator, Evelyn C. Hankins, as well as biographical information about the artists and color reproductions of selected works.

## KIDS AND FAMILIES

### ART ADVENTURES

WEDNESDAYS, 3:30 - 5:00 PM

Ages 6-8: Sept. 7, 14, 21, 28, October 5 and 12

Ages 9-11: Oct. 19, 26, Nov. 2, 9, 16, and 30

Fee: Museum Family Members \$35; General \$45



Artwork created at Art Adventures, Fall 2004

An exciting opportunity for children to explore the visual arts with UVM art education students supervised by their professor, Tom Brennan. Classes offer the chance to experiment with a variety of mediums such as painting, sculpture and collage.

### Community Family Day

NOVEMBER 5 11 AM - 4 PM  
\$3 per person

Fleming Museum's Family Day is an annual event featuring an inviting mix of hands-on activities, talks, and performance relating to our fall exhibitions. Join us and stimulate your child's creative curiosity.