



FACULTY SENATE

Research, Scholarship & the Creative Arts Committee
October 11, 2018
427a Waterman 12:30-2:00

Present: Brandon Ackley (GSS), Chris Burns (LIB), Rachelle Gould (RSEN), Britt Holmen (CEMS), Dimitry Kremmentsov (CNHS), David Neiweem (CAS), Cathy Paris (Faculty Senate President), Matthew Price (CAS), Albert van der Vliet (COM)

Absent: Steve Budington (CAS), Mary Cushman (LCOM), Tammy Kolbe (CESS), Steve Keller (CALS), Chuck Schnitzlein (GSB)

Guests: Thomas Chittenden (FS President Elect), Cindy Forehand (Dean of the Graduate College), Ann Kroll Lerner (FOUR),

Chair Chris Burns called the meeting to order at 12:34pm in 427a Waterman.

1. **Approval of the Minutes.** The minutes of September 13th will be voted on at the November meeting.
2. **FOUR, Ann Kroll Lerner.** The research conference is for both graduate and undergraduate students. If there are suggestions for next year's conference please e-mail Ann at akrollle@uvm.edu. The SGA would be a great way to keep the students aware of the opportunities on campus.

Fellowship, Opportunities and Undergraduate Research
FOUR

FIRE: Fall INTRO to Research Expo

- Sponsored by Enrollment management & the Honors College
- Hosted by FOUR

Description of Event:

- An exposition of the research-related resources for students at UVM along with step-by-step guides for getting involved in undergraduate research given by students, faculty, and staff. Light refreshments available.

Tables in the Fireplace Lounge will include two kinds:

- Funding and Researchers: Complex systems which is launching a new partnership with MassMutual for a summer research internship program
- Resources for helping researchers: UVM libraries which serve as a resource for researchers across levels and disciplines.

Date & Time

- Monday, November 12 from 2-5 pm
- 5-6 is a pizza party for volunteers-faculty, student, and staff – requires and email to four@uvm.edu RSVP'ing to the event so we know how much pizza to provide.

Location:

- Fourth Floor Davis, Fireplace Lounge and Livak Ballroom

Who:

- Tables: Researchers, advisors, mentors, and funders
- Attendees: Students interested in getting involved in research or learning more about what they could be doing.
- Networkers: Faculty and student researchers who are excited to share their experiences and meet eager young researchers. There will be refreshments and high-top tables to encourage discussion and engagement of participants.

Ask:

- Please encourage faculty, departments, programs, and colleges to attend the event.
- We are looking for volunteers to be available for chatting with future researchers about their interests and what the possibilities are.
- Resources, programming, funds, and researchers that would like a table are welcome. We have a limit of 24 tables at this but should interest exceed this we will be considering alternative spaces for more tables

Topics that FOUR is working on.

- a. 28 students submitted to the Fulbright opportunity.
 - b. Truman Scholarships. The Harry S. Truman Scholarship seeks to identify and support current juniors who have demonstrated significant leadership abilities and are dedicated to pursuing a career in public service.
 - c. Gold Water. The Barry M. Goldwater Scholarship seeks to encourage outstanding students to pursue research careers in mathematics, the natural sciences, or engineering and to foster excellence in those fields. Each year, the University of Vermont can nominate up to four students who are in their sophomore or junior year for a Goldwater Scholarship.
 - d. Udall scholarship. The Udall Scholarship seeks to find and support undergraduate students from any ethnic group who demonstrate a commitment to improving or preserving the environment and to Native American undergraduates committed to a career in health care or tribal public policy.
3. **Graduate Student Recognition, Brandon Ackley.** There are 6 general graduate awards and the outstanding thesis award. Two of these are focused on teaching. There is not a generalized award that all graduate students would be eligible for. The GSS would like to see more recognition including awards for mentoring and a broader range of scholarship. The Fellowship Office will work with the GSS to help raise awareness.

Dean Forehand will work with Ann on a way to offer a mentorship award for Graduate students.

4. Graduate College Update, Dean Forehand.

- a. **Graduate Housing**, Graduate students are front and center in the new housing plan for the university. The university is working with private groups to make this happen.
- b. **A Day and the Life**, there are a lot of graduate students represented in this publication. This is a huge improvement from when it started.
- c. **Graduate Enrollment**

Growing Graduate Enrollment: 5 year plan

Target 1: 30% increase in graduate enrollment by 2020

- Fall 2015: 1385
- Fall 2020 target: 1800 students (+415)

Where are we now?

- Fall 2018: 1601 (+216)
- 16% increase
- Graduate NTR increased 46% from FY16 to FY18

Target 2: Decrease UG/G ratio from 5.5 to 4.5

- Fall 2015: 10,081 UG, 1385 G, 457 Med, UG/G = 5.47

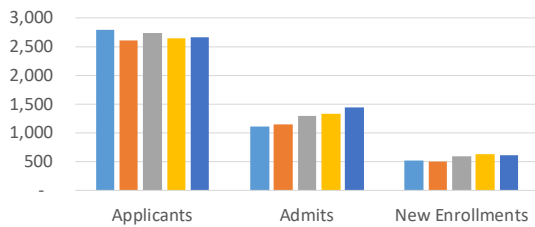
Where are we now?

- Fall 2018: 10,612 UG, 1601 G, 466 Med, UG/G = 5.13

Applications, Admits and New Enrollment Trends

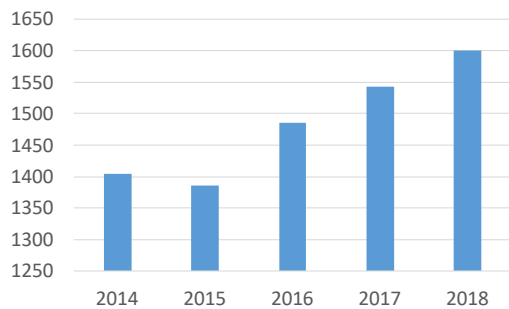
Overall Admissions Trends

■ 2014 ■ 2015 ■ 2016 ■ 2017 ■ 2018

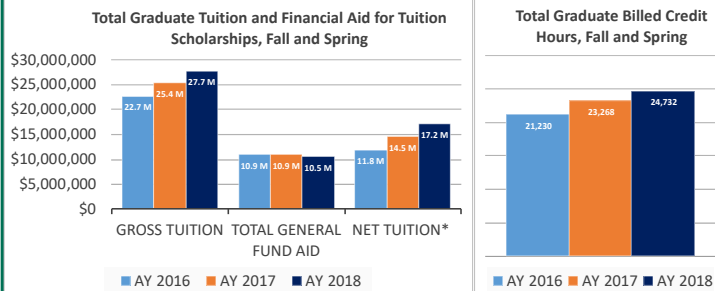
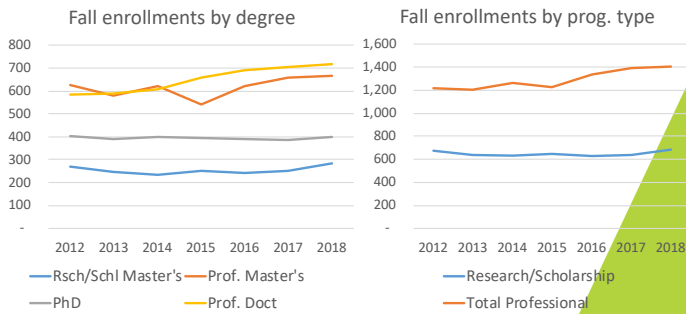


Enrollment Trends

Total Fall Graduate Enrollment



Enrollment Trends (including MD)



Growing Graduate Enrollment: Strategies

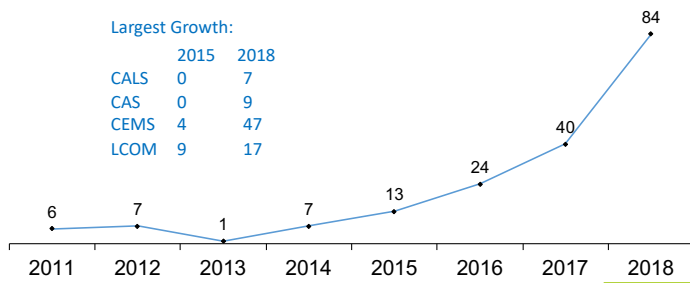
- Increase numbers of students in current programs
- Increase accelerated master's options
- Create Variable Tuition Rates (VTR) to decrease out-of-state tuition in select programs
- Increase international enrollment
- Develop pre-masters gateway program

Accelerated Master's Programs

Accelerated Master's students in Undergraduate Dual Enrollment

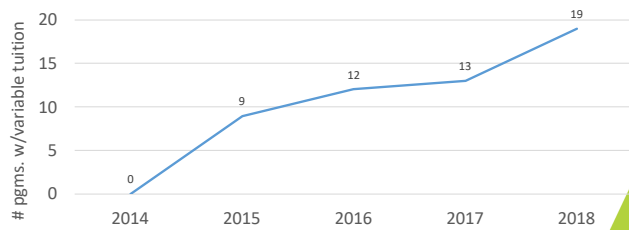
Largest Growth:

	2015	2018
CALS	0	7
CAS	0	9
CEMS	4	47
LCOM	9	17



Variable Tuition Rates

Variable Tuition Programs



New graduate programs (since 2015) approved or under development:

BOT Approval	Program	Unit	Start	Current Students
March 2015	Master's in Medical Science	LCOM	AY 15-16	35
May 2015	PhD in Food Systems	Interdisc	AY 15-16	6
May 2015	MS in Complex Systems and Data Science	CEMS	AY 16-17	18
March 2016	Master's in Medical Laboratory Science	CNHS	AY 16-17	10
May 2016	CGS in Epidemiology	LCOM	AY 16-17	2
October 2016	CGS in Health Care Management and Policy	LCOM	AY 17-18	2
February 2017	PhD Human Functioning & Rehabilitation Science	CNHS	AY 17-18	4
May 2017	CGS in Agroecology	CALS	AY 18-19	none
October 2017	MS in Physical Activity and Wellness	CNHS	AY 19-20	NA
February 2018	PhD in Complex Systems and Data Science	CEMS	AY 18-19	11
February 2018	MS in Biomedical Engineering	CEMS	AY 18-19	1
February 2018	MS in Engineering Management	CEMS	AY 19-20	NA
May 2018	CGS in Community Resilience	CALS	AY 19-20	NA
May 2018	PhD in Physics	CAS	Ay 19-20	NA
May 2018	Masters in Athletic Training	CNH	AY 19-20	NA
May 2018	CGS in Sustainable Enterprise	GSB	AY 19-20	NA

New Interdisciplinary Training Grants (>\$7.25M over 5 years)

NSF NRT: Quantitative and Evolutionary STEM Training (QUEST): An Integrative Training Program for Versatile STEM Professionals to Solve Environmental and Global Health Problems

- Awarded August 2017 to M. Pespeni (Biology) with Core Participants from CALS, CAS, CEMS, CESS and other participants from LCOM and RSENR

NIH T32: Training in Complex Systems and Data Science Approaches Applied to the Neurobiology of Drug Use

- Awarded July 2018 to H. Garavan (Psychiatry) and Co-PI P. Dodds (Mathematics and Statistics) and other participants from LCOM and CEMS

Department of Education Office of Special Education Programs: Interprofessional Education (IPE) Project

- Awarded October, 2018 J. Hurley (Education) and S. Velleman (Communication Sciences and Disorders)

Increasing Enrollments in Existing Programs: International Students

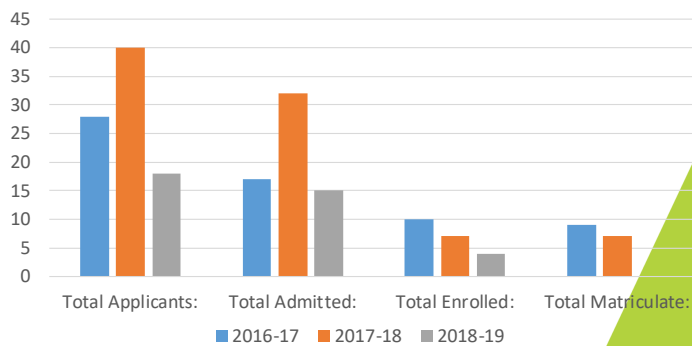
Pre-master's Program
(Graduate-level program,
similar to UG GGP)



Our first cohort at Orientation

PMP Enrollment Trends

PMP Admissions and Enrollment



d. Travel and Dependent Care Costs for NSF.

Link to full policy: https://www.nsf.gov/pubs/policydocs/pappg18_1/nsf18_1.pdf

(ii) building has a usable life consistent with project purposes and is architecturally suitable for

conversion;

3. (iii) rearrangement and reconversion costs are essential to the project supported by the grant; and
4. (iv) space involved will actually be occupied by the project. In situations where the space is rented, in

order for the costs of the rearrangement and reconversion to be allowable, the grantee must secure a lease for the length of the project.

b. Rearrangement and reconversion expenditures which do not exceed \$25,000 may be approved by grantees. For rearrangement and reconversion expenditures exceeding \$25,000, the grantee must request prior approval from NSF via use of NSF's electronic systems. Otherwise, any plans for such rearrangement or reconversion should be clearly set forth in the proposal. If approved by NSF, such approval must be indicated in the award notice. Note that 2 CFR § 200, Appendix II contains provisions that must be included in contracts made by the grantee.

See 2 CFR § 200.462 for additional information on rearrangement and reconversion costs.

2. News Release Costs

Costs of communicating with the public and press to announce the results and accomplishments of an NSF- supported project are allowable. Grantees should be aware of the restrictions on advertising, organizational promotion, and lobbying costs as outlined in the applicable cost principles. See 2 CFR § 200.421 for additional information on advertising and public relations.

In the event the performing organization wishes to collaborate with NSF in a simultaneous news release, arrangements may be made through the NSF's Office of Legislative and Public Affairs, Public Affairs Group, telephone (703) 292-8070.

3. Travel and Temporary Dependent Care Costs

Travel, meal and hotel expenses of grantee employees who are not on travel status are unallowable. Costs of employees on travel status are limited to those specifically authorized by 2 CFR § 200.474.

Temporary dependent care costs (a dependent is defined in 26 USC 152) above and beyond regular dependent care that directly results from travel to conferences are allowable costs provided that the costs are:

1. a direct result of the individual's travel for the NSF conference award;
2. consistent with the grantee's documented travel policy for all employee travel; and
3. only temporary during the travel period.

See 2 CFR § 200.474 for additional information on travel costs. **D. Indirect Costs**

1. NSF Policy

a. Except as noted in an NSF program solicitation, it is NSF policy that grantees are entitled to reimbursement from grant funds for indirect costs (F&A) allocable to the NSF share of allowable direct costs of a project. NSF program staff are not authorized to negotiate indirect costs as a discrete item of a proposal

- 5. Qualtrics, Matthew Price.** Qualtrics is an online survey provider that is easy to use and works very well? Was purchased by the department of psychology department, it has become extremely popular. It could be something the university could look into buying a site license for in place of Lime Survey. Chris has shared this information with ERTC chair Regina Toolin and Matthew is on the agenda for the November meeting.
- 6. New Business.** At the next meeting.
- a. Brian Prindle will discuss Click.
 - b. The first round of Burack Lectures will be evaluated.
 - c. Data Management will be discussed

Adjourn at 2:00pm.

The next meeting of the RSCA is scheduled for Thursday, November 8, 2018 from 12:30 – 2:00 in 427a Waterman.