

Facilities Modernization & Renewal

Budget, Finance & Investment Committee
May 19, 2023



Luce Hillman, Executive Director of Facilities Management

Facilities Renewal Project Development

- By category, source of funds:
 - Plant Improvements (deferred maintenance)
 - State Capitalization bill and appropriation
 - Facilities Renewal Reserve and \$13M Revolving Fund
 - SRIAC (student sustainability fund.)
- Identify needs
 - Operational critical, desirable
 - Project scoping, estimating, timing, etc.
- Conduct risk assessment
 - Cross-unit collaboration, committee review
 - Prioritization factors: regulatory compliance, life safety, academic schedule impact, etc.
- Develop timeline



Facilities Renewal Project Categories

- Life Safety
 - Fire alarms, elevator modernization, etc.
- ADA
 - Sidewalks, accessibility, etc.
- Utilities
 - Main District Energy Plant, mechanical, electrical, steam & chilled water distribution systems, etc.
- Building envelope
 - Foundations, roofs, windows, etc.
- Grounds
- Classroom improvements



Pomeroy Barn and Wadhams House & Barn



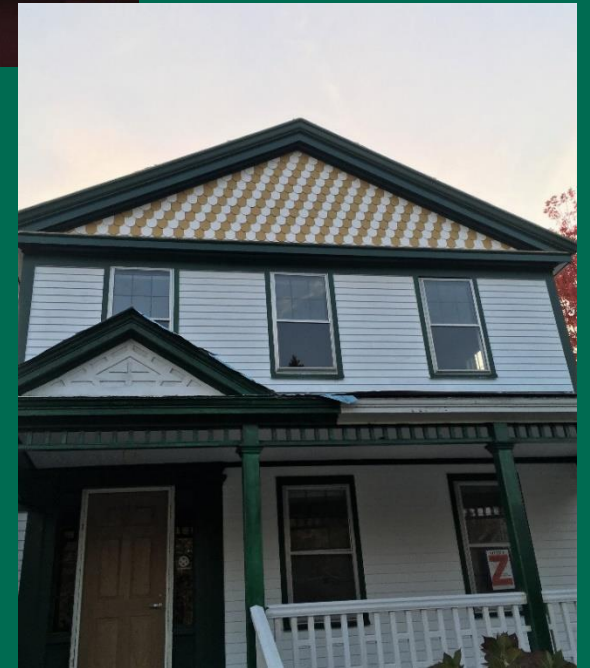
**Pomeroy Barn &
garage demolished**



Wadhams House

- Historic paint
- Building envelope

**Wadhams Barn
New foundation**



Hills/Benedict Auditorium Renovation



Steam Vault Repairs



42 steam & chilled water vaults



Paving Repairs & Sidewalks



2022 University Place Renovation
(shared project with City of Burlington)

Waterman Dormers



Multi-year project underway to replace all 56 of the original (c. 1941) dormers on Waterman Building.



16 Colchester Ave Roof



Replaced 25-year asphalt shingle roof with longer lasting 80-year metal standing seam roof



Lake Champlain Research Vessels

Melosira



Marcelle



Athletic Complex



**Replaced original 1981 roof on
Multipurpose/Indoor Turf area**



**Replaced original 1980 pneumatic (air
handling) unit with DDC (digital controls) to
improve cooling and ventilation for Athletics
Group Fitness Hub**



Moulton Winder Field



Replacing the turf, upgrading the water cannons and facilities. (Original construction was 2005)



Summary

- In addition to major capital projects, our Facilities Management (FM) team works on *dozens* of smaller projects throughout the year.
- Our project managers and professional engineering staff have huge work loads, often juggling multiple projects and priorities on tight timelines and budgets.
- We aim to be proactive in determining our projects, but sometimes other reactive, urgent or unplanned projects arise.
- We use life-cycle costing and we keep sustainability in mind when making project decisions.