



The University of Vermont

Confined Space Rescue Team: *“Who we are & what we do”*



Confined Space Rescue Team

What is a "Confined Space"?

Confined Space is a federal regulatory term used to describe an area that:

1. Is large enough and so arranged that an employee can bodily enter it,
2. Has limited or restricted entry or exit points (e.g., tanks, vessels, vaults, and pits), or
3. Is not designed for continuous occupancy.

Some Confined Spaces are further defined as "Permit Required". These spaces may contain potential hazardous atmospheres, engulfment hazards, internal configuration hazards or other recognized serious safety hazards.

The UVM Campus contains 43 utility manholes and 242 identified confined spaces, including 122 "Permit Required" spaces.

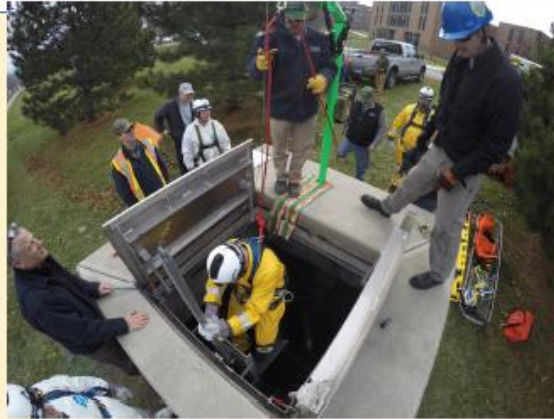


Safe Entry into Confined Spaces

Physical Plant Department personnel regularly perform routine and emergency maintenance in **Permit Required Confined Spaces**.

Prior to entering these spaces, the entry team must complete a Written Permit to evaluate hazards of the space, plan their procedures for safe entry, and utilize measures (such as barriers) to prevent unauthorized persons from entering the space.

An **Attendant** must be stationed outside the confined space at all times whenever an **Authorized Entrant** is inside. The attendant monitors activities and conditions both inside *and* outside the space to determine if it's safe for entrants to remain inside, and orders the entrants to evacuate immediately if a hazard is identified.



Training & Preparation

The team partakes in extensive training and preparedness drills throughout the year to be ready at a moment's notice.

Whenever Physical Plant maintenance personnel are about to enter a "confined space" the members of the CSRT are put on alert via text messages through Service Operations Support (SOS). The mobile CSRT vehicle containing all the necessary equipment is transported nearby the work site in the event the team is needed.

Why the CSRT is needed

In accordance with federal OSHA regulations, the University is responsible for arranging or providing its own rescue service in the event of an emergency where an employee may need to be rescued from a Confined Space.

The University is also required to have a written program and an employee training program with safety procedures and protocols for maintenance personnel to safely enter these confined spaces.

The **Training & Compliance Office (TCO)** within the Physical Plant Department manages and oversees all aspects of the program. (Their office is located in the Fort Ethan Allen Complex in Colchester, a few miles from main campus.)

Did you Know?

Entry teams use 4-gas meters to continually monitor levels of combustible gases, oxygen, carbon monoxide, and hydrogen sulfide within the confined space.



Tools of the Trade –

Safety equipment is paramount for this team to function:

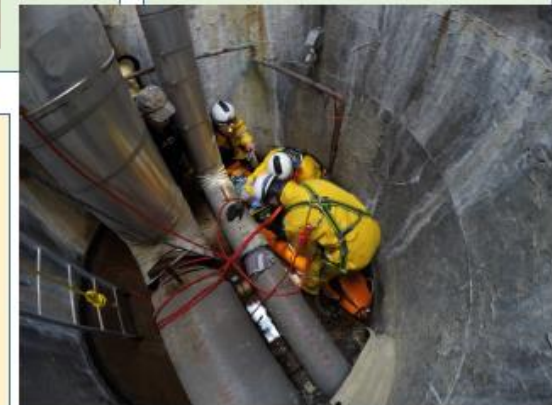
- Atmosphere testing and monitoring equipment
- Ventilating equipment
- Communications equipment (e.g., 2-way radios)
- Ladders for safe ingress and egress
- Personal Protective Equipment or "PPE" (e.g., harness, hard hat, headlamp)
- Rescue and emergency equipment such as a tri-pod with hoist to assist in the removal of workers.



Meet the Team

The CSRT team is currently made up of staff volunteers within the Physical Plant. The 2017 members include:

- Andrew Blount, TCO
- Chris Walker, TCO
- David Blatchly, Davis Zone
- Gregory Peryea, Davis Zone
- Jack Corliss, Utility Zone
- James Tracy, Utilities Zone
- John Leonard, South Zone
- Jon Thibault Jr., Davis Zone
- Joseph Beaudry, Life Safety
- Ray Doner, Utility Zone
- Richard Barry, Davis Center Operations
- Richard Weld, Utility Zone
- Stephen Znamierowski, TCO
- Vincent Brennan, TCO



UVM Team works in conjunction with Burlington Fire Department





- *Help* keep employees safe when they enter confined spaces to do maintenance
- 200+ confined spaces on UVM campus (vaults, tanks, tunnels, etc.)
- OSHA-required program
- UVM is unique because we have our own *internal* team



Confined Space Rescue Team Roster

(18 UVM employees & 2 UVM student volunteers)

- Chris Walker (TCO)
- David Blatchly (DIR)
- Gregory Peryea (DAVIS)
- Jack Corliss (UTIL)
- John Leonard (SOUTH)
- Jon Thibault Jr. (DAVIS)
- Joe Beaudry (LSS)
- Ray Doner (UTIL)
- Richard Barry (DAVIS OPS)
- Rick Weld (UTIL)
- Stephen Znamierowski (TCO)

- Vince Brennan (TCO)
- Chris Panko (TCO)
- Rebecca Myer (DIR)
- Daniel Lowe II (TCO)
- Kevin Sweeney (DIR-ENGIN)
- Matthew L. Farnham (SOUTH)
- Zachary Borst (EMERGENCY MGT)
- Christopher Guido (STUDENT-RESCUE)
- Jason Drebber (STUDENT-RESCUE)



The University of Vermont



- The CSRT members are paged ahead of time whenever someone is going 'in a hole' to do maintenance.
- The CSRT vehicle is moved to the location.
- Team uses Motorola radios for instant communications.





PPE includes SCBA, helmets, gloves, masks, boots, Tyvek, headlamps and 4-gas meter.



- Monthly meetings
- Trainings in field
- Mock drills
- Routine inspection of our equipment

2019 Team Building Retreat at the UVM Ropes Course







- Teamwork
- Skills
- Trust
- Safety







The University of Vermont

Interested in joining the team?

Contact Steve Z. at PPD
Training & Compliance Office