

Grounds 2017



Presentation by:
Colin Barch and Sam Conant, Grounds Maintenance Specialists



- Mowing & Trimming
- Planting & Pruning Trees, Shrubs, Perennials, Annuals
- Maintenance and Snow removal of Parking Lots, Roadways, Sidewalks
- Storm Drains, Storm Ponds
- Fence repair
- Maintenance of Irrigation Systems in UVM Green and Athletic Fields

New Faces



Allen & Jake

New Spaces



Centennial Storage Facility





The best part about our new storage facility...





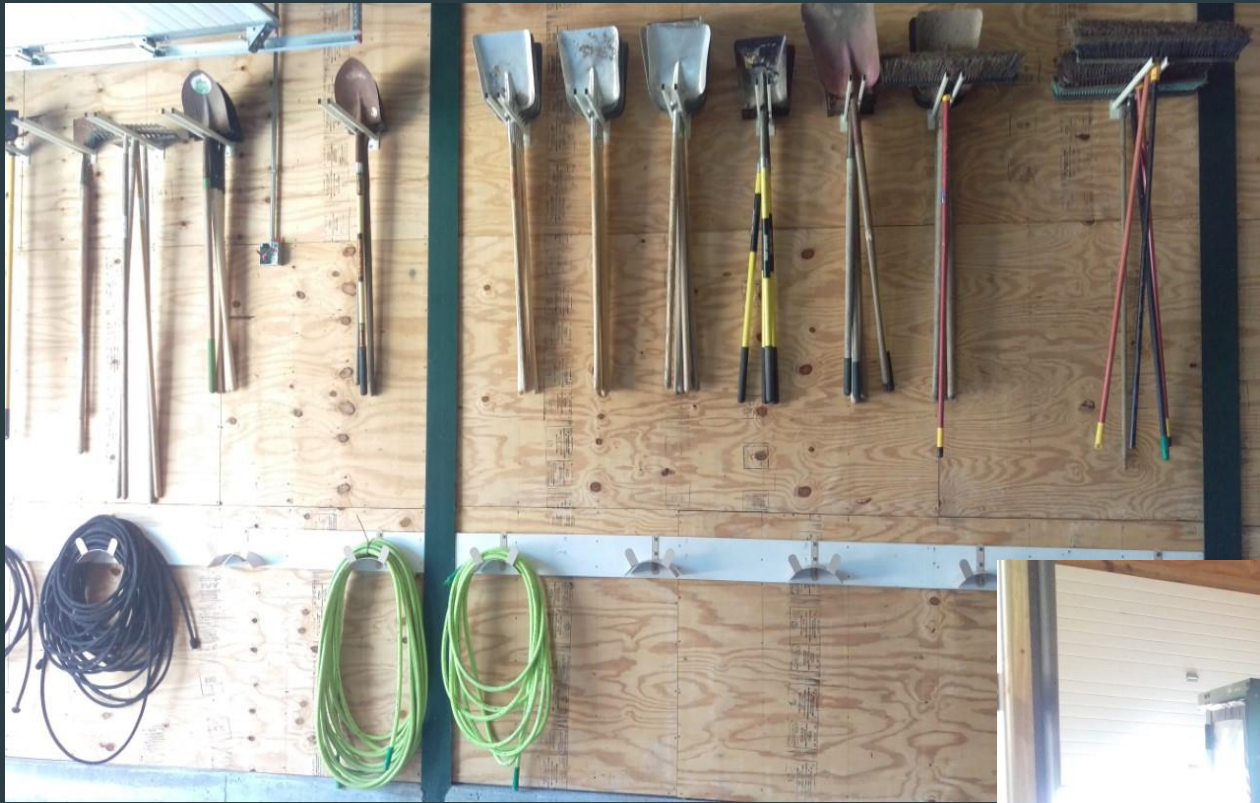
It's Yoooj!



More space than we know
what to do with.....



Timeout





Thank You Trinity Zone staff



A Changing Campus Landscape



Where am I?





















Trees and more Trees



Grounds Fact:

Dawn Redwood, UVM Green (ID100). This species had only been observed through its fossils until being discovered in 1943. Believed to be extinct for 60 million years, the World Conservation Union has declared this species one of twenty-one endangered coniferous species.



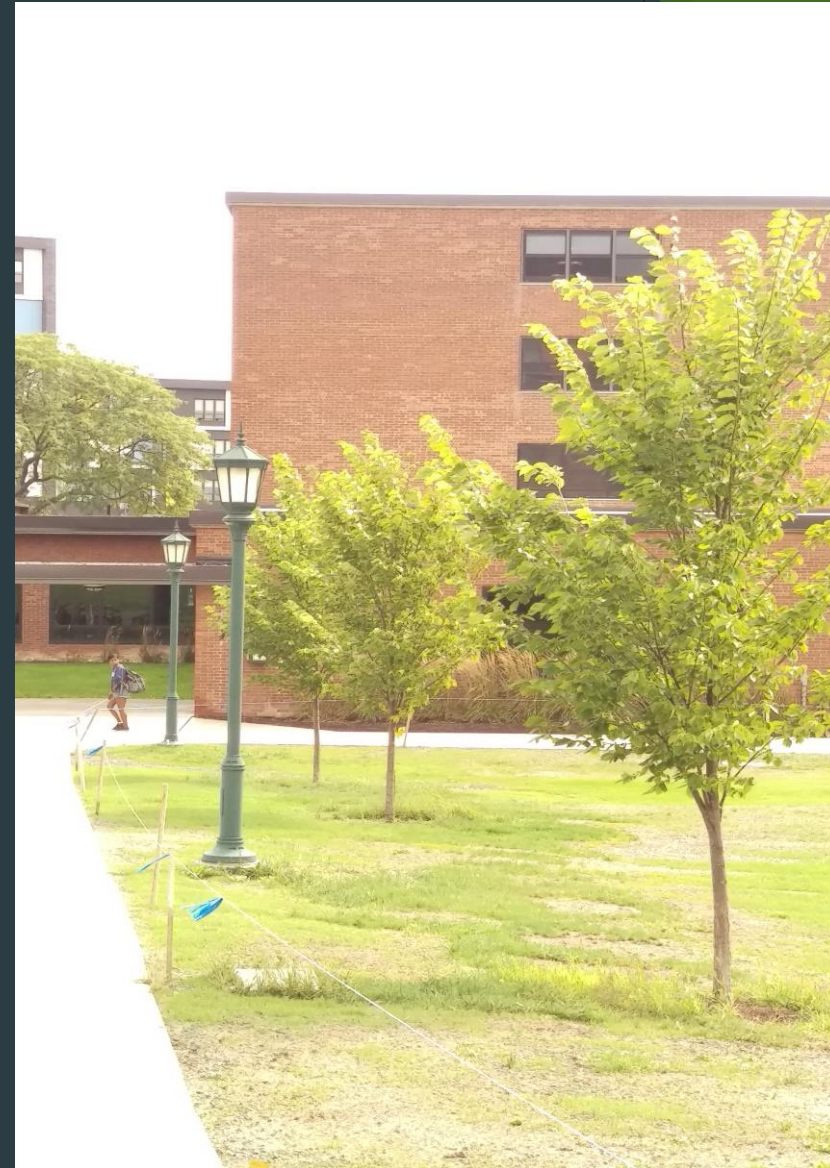
Tree Campus USA

- Helping Colleges and Universities to establish and sustain healthy community forests



Standards

1. Campus Tree Advisory Committee
 - Student
 - Faculty Member
 - Facility Management
 - Community Member
2. Campus Tree Care Plan
3. Campus Tree Program with Dedicated Annual Expenditures
4. Arbor Day Observance
5. Service Learning Project



What are we doing?



(Note: Trees may have been harmed in the creation of this presentation, sorry)

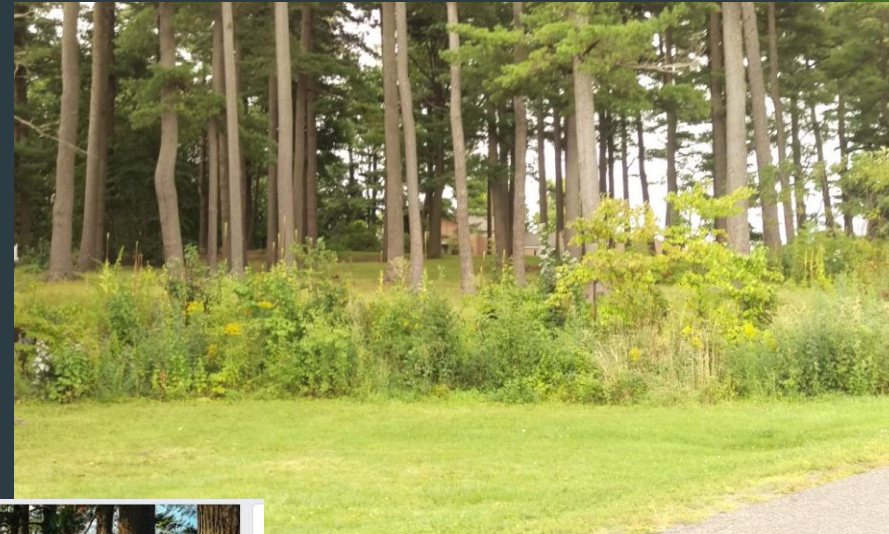
...More trees

Redstone Circle & Mason Hall



- ▶ Grounds Fact: There are 2,500+ trees on campus. Sam has hugged 23 with 5 visual confirmations.

Removal of Invasive Species & New Plantings



REDSTONE
VSTEP UVM
PROJECT TREES

NOV 15 Redstone Pines Restoration Project
Public · Hosted by VSTEP

★ Interested ✓ Going

Sunday, November 15, 2015 at 10 AM

The image shows a Facebook event poster for the 'Redstone Pines Restoration Project'. The poster features a background image of a forest with a central logo that reads 'REDSTONE VSTEP UVM PROJECT TREES'. Below the image, the event is listed as 'NOV 15 Redstone Pines Restoration Project' and is 'Public · Hosted by VSTEP'. There are buttons for 'Interested' and 'Going', and the event is scheduled for 'Sunday, November 15, 2015 at 10 AM'.



MAT

Waterman



Protecting existing trees



WRONG METHOD



CORRECT METHOD

How do trees get damaged?

- ▶ Mechanical
- ▶ Root Compaction
- ▶ Insects
- ▶ Birds
- ▶ Disease
- ▶ Weather
- ▶ Animals

Grounds Fact:

Black and Honey Locust are salt tolerant species. Sugar Maple, Red Maple and Oak are examples of salt sensitive species.



Ice Storm of January 1998



Grounds Facts:

Caused \$4-6 Billion worth of damage

Left 4 million people without power

Largest deployment of Canadian troops since the Korean War

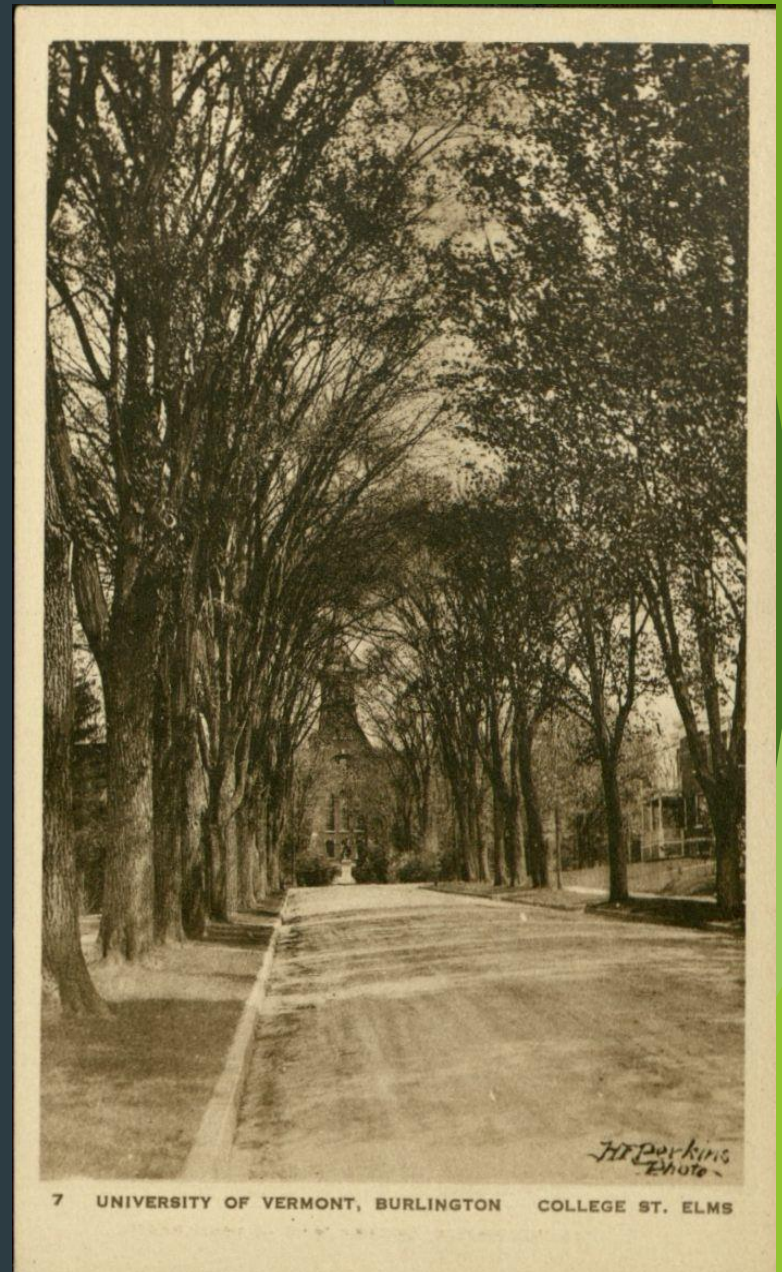


20 years ago



Grounds Fact:

Dutch Elm Disease destroyed an estimated 1,000 trees on campus. The last mature Elm was removed from the UVM Green in 2005.





Pretty and Preventative



SAFE HAMMOCKING



Grounds Fact:

100% of the UVM students we interviewed enjoyed hammocks.



Tree Inventory Map

Map Display - ArborScope - Google Chrome
Secure https://www.arborscope.com/mapDisplay.cfm?id=0CCAC6

BARTLETT TREE EXPERTS
SCIENTIFIC TREE CARE SINCE 1907

ArborScope™

University of Vermont (2014)

Map Satellite

Condition: ● Good ● Fair ● Poor ● Dead

Options >

Filter Options

View by Common Name: All

View by Genus: All

View by Species: All

View by Dedication Type: All

View by Significant tree: All

Filter Trees Reset

View Tree ID: Go

Map View

Tutorial Videos ArborScope™

Edit Tree Information

We're Bartlett Tree Experts
No matter the size or scope of your tree and shrub needs, our experts bring a rare mix of local service, global resources and



The Path to Class

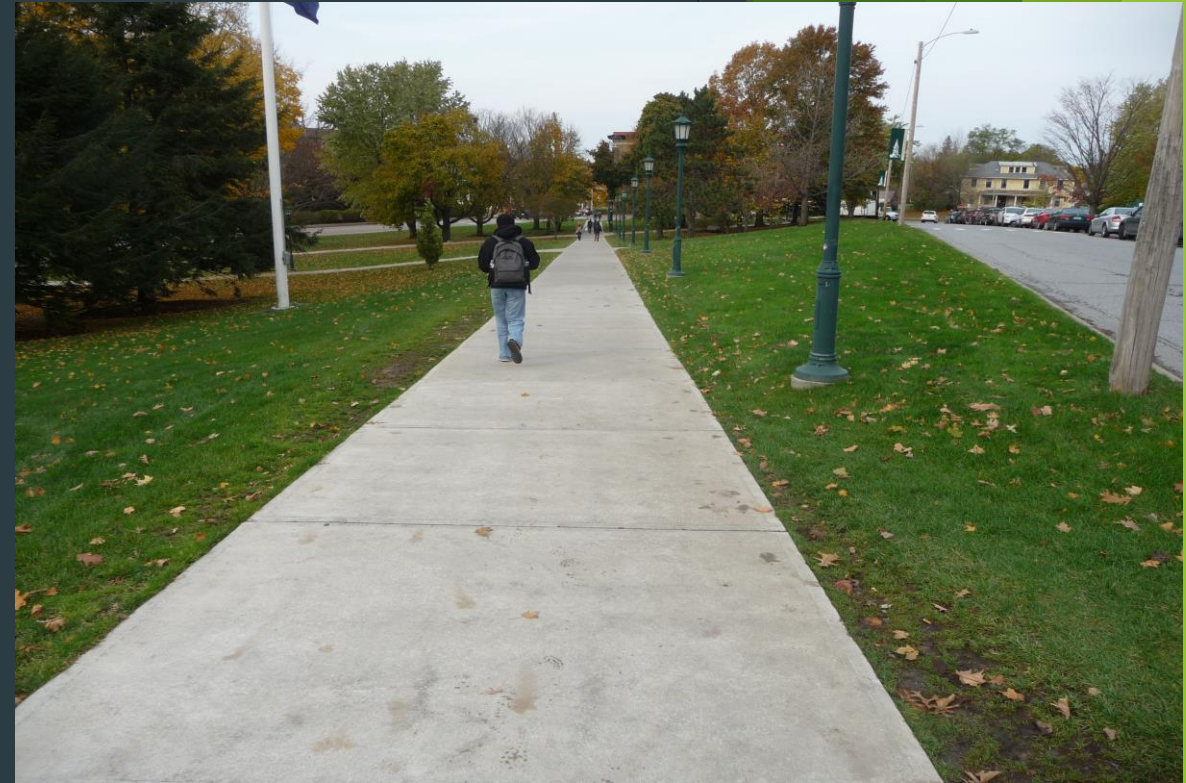


Grounds Fact:

In 1874, the fountain was donated to give the college green a facelift. Funds were donated by John P. Howard.



From asphalt to concrete



There are 15 miles of walkways, 9 miles of roadways, and 39 acres of parking lots on campus

Wrong Way



Concrete helps the mind distinguish a sidewalk from a roadway

Bigger and Boulder





“Please Keep Off the Grass”



Boulders keep vehicles off green spaces



Grounds Fact:

There are few known fences that have ever stopped Ed Metivier with a snowplow.

Cow Paths



Deterrence



Putting people on the right path...





Elimination



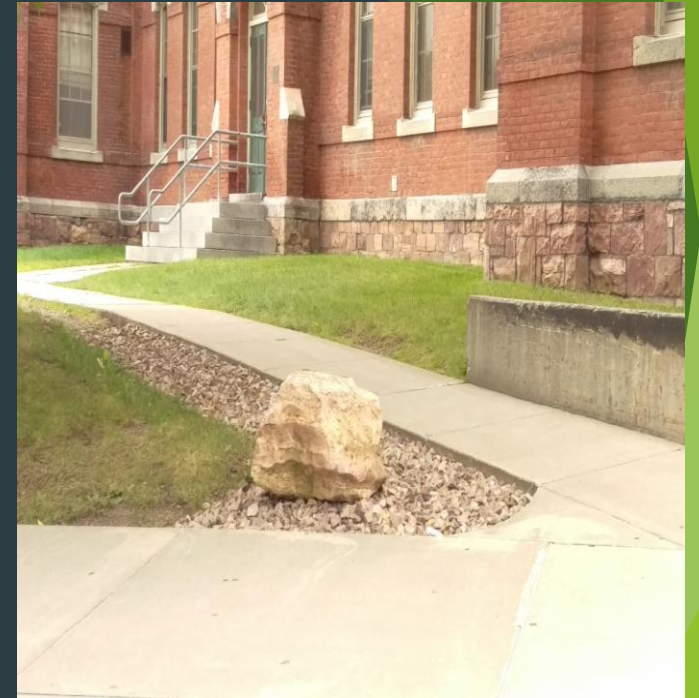
Wider is Better



5' Walkway Rowell



6' Walkway to Central Heat Plant



Look where you are going... *or don't*



Keep on it

- ▶ Wide walkways: More maintained surface during winter, less erosion, less fall hazards



Sidewalk & Roadway Treatment



- ▶ In 2015, we switched to our current treatment. Made from refined corn carbohydrate derivative blended with magnesium chloride.
 - Works at lower temperatures than dry salt
 - Reduces bounce and scatter thereby reducing salt application rates which saves time, labor, fuel and materials
 - Better for the environment
 - Less corrosive





Rose Leland

Grounds Manager since 1998

Thank you Rose for your 20 years of service to UVM!