

# University of Vermont

## FY 2014 Sourcebook

---

July 1, 2013 to June 30, 2014



Office of Financial Analysis & Budgeting  
440 College St.  
Burlington, VT 05405  
Phone (802) 656-3244  
Fax (802) 656-2046  
<http://www.uvm.edu/~ofabweb>



# **The University of Vermont**

## **FY 2014 Sourcebook**



Burlington, VT

<http://www.uvm.edu/~ofabweb>

# **About the UVM Sourcebook**

The UVM Sourcebook is a collection of demographic and financial information about the University of Vermont. It is designed as a reference book for those who wish to know more about the numbers and trends that describe the University's size, costs, resources, and constituent groups.

## **How is it organized?**

The Sourcebook is divided into four sections:

- Section 1: Student Information
- Section 2: Personnel Information
- Section 3: Financial Information
- Section 4: Topical Information

## **Who put together this Sourcebook?**

The **UVM Sourcebook** is produced by the offices of **Financial Analysis and Budgeting** and the **Office of Institutional Research**. Information for many pages has been provided by other University offices, including:

- Administrative & Facilities Services
- Agriculture & Life Sciences, College of
- Campus Planning Services
- Continuing and Distance Education
- UVM Foundation
- Extension
- Graduate College
- Libraries & Learning Resources
- Medicine, College of
- Sponsored Project Administration
- Student Financial Services
- Treasury Management
- University Financial Services

## **How can we make it even better?**

The Sourcebook is updated annually. We are interested in your ideas for improving future editions. You can contact us via email at: [Jasmine.Manuelyan@uvm.edu](mailto:Jasmine.Manuelyan@uvm.edu).

## **How can we get more copies?**

The UVM Sourcebook copies are available from:

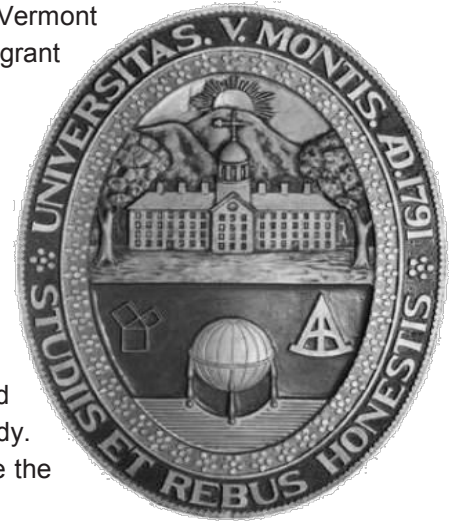
<http://www.uvm.edu/~ofabweb>  
Financial Analysis and Budgeting  
440 College St.  
Burlington, VT 05405  
Phone (802) 656-3244  
Fax (802) 656-2046

# An Introduction to The University of Vermont, “UVM”

*(The acronym “UVM” is derived from Universitas Viridis Montis - University of the Green Mountains.)*

The University of Vermont and State Agricultural College was formed in 1865 as the result of the combination of the University of Vermont and the Vermont Agricultural College. The University was chartered in 1791, the same year that Vermont became the fourteenth state in the Union, as the fifth college in New England and the twentieth in the United States. The Vermont Agricultural College was formed in 1864 as the State’s land-grant institution in accordance with provisions of the Federal Morrill Act.

UVM blends the academic heritage of a private university with the service mission of the land-grant tradition. In 1955, the General Assembly recognized the University of Vermont and State Agricultural College “as an instrumentality of the State for providing public higher education.” Even previous to that recognition the State had annually appropriated funds specifically to the College of Medicine and to the Agricultural Services, and had appropriated tuition scholarship funds for Vermont residents in certain fields of study. Beginning in 1956, the State appropriated new funding to subsidize the cost of educating Vermont students.



UVM is the State’s flagship university and its only comprehensive research institution of higher education. It is located in Burlington, the largest community in the State with a greater metropolitan population of approximately 213,700. It is approximately 90 miles south of Montreal, 230 miles northwest of Boston, and 300 miles north of New York City.

**The University Seal.** The present official seal of the University was first adopted in 1807. It depicts the sun rising over the Green Mountains with the original “college edifice” (the Old Mill), in the upper foreground; a diagram of the Pythagorean proposition, a quadrant and a globe in the lower foreground. The outer ring of the oval includes the motto and “Universitas V. Montis. A.D. 1791.” “Collegiumque Agriculturae” in an inner ring denotes the establishment of the College of Agriculture in 1865.

**The Board of Trustees.** The 25 members of the Board of Trustees are appointed in four ways. In odd-numbered years, three members are elected by the Vermont General Assembly for 6-year terms, and the nine trustees so chosen constitute the Board of the Vermont Agricultural College established in 1865. In even-numbered years, three members are elected to 6-year terms by a self-perpetuating board of nine trustees who constitute the Board of the University of Vermont founded in 1791. Three trustees are appointed by the Governor of Vermont, one during each odd-numbered year. Each year, one of two students who serve as trustees is selected by the Associated Directors for the Appointment of the University of Vermont and State Agricultural College Student Trustees, Inc., for a 2-year term. The Governor of the State and the President of the University serve as trustees ex officio during their terms of office.



# Table of Contents

---

## **Student Information**

### **Applications & Admissions**

1st-Time, 1st Yr Applications by Residence ..	2
1st-Time, 1st Yr Admissions by Residence ...	3
1st-Time, 1st Yr Applications by College .....	4
External Transfer Admissions by Residence ..	5

### **Enrollments**

1st-Time, 1st Yr Enrollments by College.....	6
Enrollments by College, Residence and Gender .....	7
Enrollments by College by Student Level.....	8
Graduate Enrollments.....	9
Undergraduate Enrollment .....	10
Enrollments by Student Level by Residence	11
Enrollments by Student Level by Gender .....	12
Multicultural and International Enrollments...	13
Enrollments by Full-Time/Part-Time .....	14
Full-Time Equivalent Students Taught .....	15

### **Graduation and Retention**

Degrees Awarded by Degree Level.....	16
Retention Rates .....	17
Graduation Rates.....	18

### **Student Costs**

Comparison - Public / Private .....	19
Cost to Vermont Students .....	20
Cost to Out-of-State Students .....	21
Comparison - National Averages .....	22

### **Student Aid**

Undergraduate Financial Aid.....	23
Financial Aid Expenditures.....	24

## **Personnel Information**

### **Faculty**

Headcount & FTE Faculty by Unit .....	25
Faculty Headcount and University FTE .....	26
Average Salaries for Tenure Track Ranks ...	27
Average Faculty Salaries by Unit .....	28

### **Faculty & Staff**

Faculty & Staff Headcount.....	29
Trends in Race/Ethnicity.....	30
Trends in Gender.....	31
Faculty & Staff Total Compensation .....	32

### **Salary Trends**

UVM Salary Increases compared to CPI .....	33
Compensation Trends .....	34

## **Financial Information**

### **University General Fund**

UVM's Revenue Budget .....	35
UVM's Expenditure Budget .....	36

### **Total University Funds**

Revenue Sources & Expense Uses .....	37
--------------------------------------	----

### **Restricted Funds**

Sponsored Project Awards by Purpose .....	38
10 Year Survey of Voluntary Support.....	39
Endowment and Similar Funds .....	40
Endowment Market Value & Total Return....	41
Endowment & Private Support .....	42
Restricted Revenue.....	43

### **State Support**

UVM State Appropriation History .....	44
State Appropriation Requests & Actions .....	45
State Appropriation per Personal Income ....	46
Analysis of State Funds for Higher Ed .....	47
Gross & Net Cost of Attendance Per Std ...	48

### **Capital Appropriation**

State Capital Appropriation History .....	49
---	----

### **Financial Position**

UVM Statement of Net Position .....	50
Summary of Bonds & Notes Payable .....	51
UVM Debt Ratios.....	51
UVM Real Estate Holdings & Facilities .....	52

## **Topical Information**

UVM Libraries.....	53
UVM College of Medicine.....	54
UVM Agricultural Services .....	55
UVM Graduate College .....	56
UVM Alumni .....	57
UVM Continuing and Distance Education ....	58

Glossary.....	59-60
---------------	-------



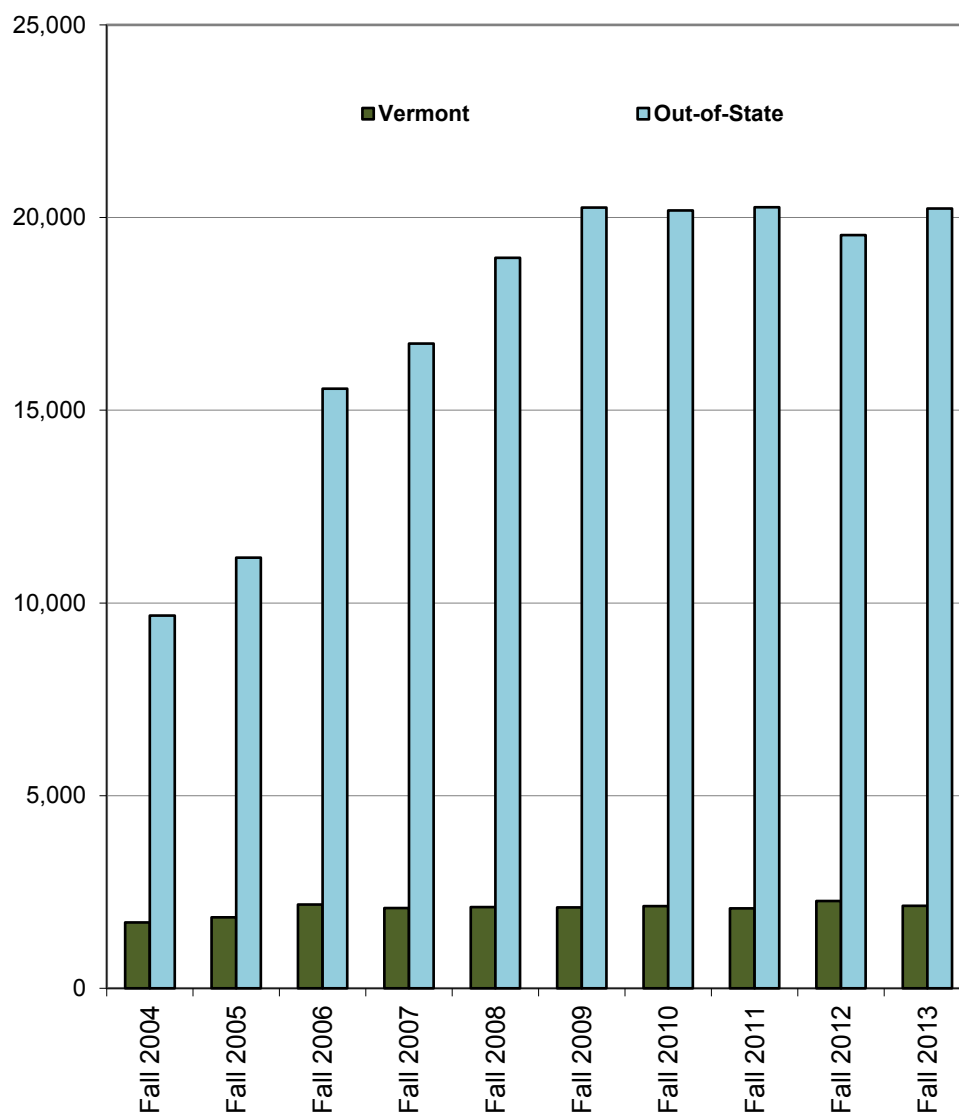
# Student Information

# Student Information

## Applications and Admissions

### First-Time, First Year Applications by Residence

UVM first-time, first year applications have been on the rise for over a decade. Since a low point in 1997 when only 5,818 out-of-state students applied, the number of out-of-state applicants increased rapidly then, from Fall 2009 to Fall 2013, reached a plateau of about 20,000. The number of Vermont applicants echoes this pattern, albeit, on a more diminutive scale.



## First-Time, First Year Admissions by Residence

During the past decade, the total admit rates have fluctuated from a high of 80.2% for Fall 2005 to a low of 64.8% for Fall 2008, and currently stand at 77.6% for Fall 2013.

Yield rates have decreased over the last ten years for out-of-state students to about 12%, partly due to the larger pools of applicants and admits, as well as increased competition for students among institutions. For Vermonters, except for a low point of 34% last year, yield rates have remained around 38% to 44%.

Vermont					
Semester	# Applicants	Admit %	# Admits	Yield %	# Enrolls
Fall 2004	1,709	77.4%	1,323	37.8%	500
Fall 2005	1,842	81.8%	1,506	43.5%	655
Fall 2006	2,173	68.8%	1,495	40.3%	603
Fall 2007	2,086	72.9%	1,521	41.7%	635
Fall 2008	2,107	71.2%	1,500	42.0%	630
Fall 2009	2,103	74.0%	1,557	41.4%	644
Fall 2010	2,133	70.0%	1,494	40.3%	602
Fall 2011	2,071	74.7%	1,548	41.3%	640
Fall 2012	2,263	69.8%	1,580	34.2%	541
Fall 2013	2,143	73.1%	1,567	38.5%	603
Out-of-State					
Semester	# Applicants	Admit %	# Admits	Yield %	# Enrolls
Fall 2004	9,675	76.2%	7,373	19.8%	1,460
Fall 2005	11,173	80.0%	8,933	19.5%	1,739
Fall 2006	15,558	64.5%	10,036	15.8%	1,587
Fall 2007	16,728	69.1%	11,558	15.7%	1,815
Fall 2008	18,955	64.1%	12,151	15.1%	1,838
Fall 2009	20,262	70.6%	14,299	13.8%	1,975
Fall 2010	20,184	70.6%	14,258	13.1%	1,870
Fall 2011	20,271	75.4%	15,293	11.7%	1,783
Fall 2012	19,545	77.4%	15,136	12.1%	1,831
Fall 2013	20,238	78.0%	15,790	12.0%	1,892
Total					
Semester	# Applicants	Admit %	# Admits	Yield %	# Enrolls
Fall 2004	11,384	76.4%	8,696	22.5%	1,960
Fall 2005	13,015	80.2%	10,439	22.9%	2,394
Fall 2006	17,731	65.0%	11,531	19.0%	2,190
Fall 2007	18,814	69.5%	13,079	18.7%	2,450
Fall 2008	21,062	64.8%	13,651	18.1%	2,468
Fall 2009	22,365	70.9%	15,856	16.5%	2,619
Fall 2010	22,317	70.6%	15,752	15.7%	2,472
Fall 2011	22,342	75.4%	16,841	14.4%	2,423
Fall 2012	21,808	76.7%	16,716	14.2%	2,372
Fall 2013	22,381	77.6%	17,357	14.4%	2,495

Admit Rate (%): percent of applicants who are admitted to the University.

Yield Rate (%): percent of admitted students who enroll at UVM.

## First-Time, First Year Applications by College

The number of applications each college receives serves as a barometer of interest in specific areas of academic study. There have been shifts in interest among the colleges and schools in the past decade. During the past ten years, the greatest numeric increase in applications has been in the College of Arts & Sciences and the greatest percentage increase has been in the College of Nursing & Health Sciences.

Number of Applications to:	Fall									
	2004	2005	2006	2007	2008	2009	2010	2011	2012	2013
<b>Agriculture &amp; Life Sciences</b>	938	947	1,135	1,588	1,220	1,345	1,467	1,431	1,525	1,598
<b>Arts &amp; Sciences</b>	6,549	7,483	10,237	10,481	12,090	13,121	12,538	12,645	11,906	11,626
<b>Business Administration</b>	1,449	1,750	2,359	2,509	2,780	2,506	2,106	2,285	2,416	2,659
<b>Education &amp; Social Services</b>	807	991	1,132	1,005	1,206	1,236	1,401	1,297	1,204	1,231
<b>Engineering &amp; Mathematical Sci.</b>	792	946	1,359	1,554	1,823	2,056	2,273	2,291	2,376	2,678
<b>Environment &amp; Natural Resources</b>	306	403	434	484	624	714	642	708	691	757
<b>Nursing &amp; Health Sciences</b>	428	395	903	1,135	1,312	1,378	1,890	1,682	1,686	1,831
<b>No College</b>	115	100	172	58	7	9	0	3	4	1
<b>TOTAL</b>	<b>11,384</b>	<b>13,015</b>	<b>17,731</b>	<b>18,814</b>	<b>21,062</b>	<b>22,365</b>	<b>22,317</b>	<b>22,342</b>	<b>21,808</b>	<b>22,381</b>

## External Transfer Admissions by Residence

From Fall 2004 to Fall 2013, total external transfer applications increased about 17%, most of which is due to the 30% increase in out-of-state applicants; and total external transfer enrollments increased about 5% over the same period.

Vermont					
Semester	# Applicants	Admit %	# Admits	Yield %	# Enrolls
Fall 2004	415	73.0%	303	73.3%	222
Fall 2005	428	75.9%	325	73.5%	239
Fall 2006	410	66.6%	273	75.1%	205
Fall 2007	399	75.9%	303	75.6%	229
Fall 2008	457	73.1%	334	80.2%	268
Fall 2009	469	76.5%	359	76.6%	275
Fall 2010	442	73.5%	325	79.4%	258
Fall 2011	420	73.8%	310	76.1%	236
Fall 2012	419	73.3%	307	77.5%	238
Fall 2013	405	77.0%	312	74.7%	233
Out of State					
Semester	# Applicants	Admit %	# Admits	Yield %	# Enrolls
Fall 2004	594	66.7%	396	41.7%	165
Fall 2005	592	64.2%	380	40.3%	153
Fall 2006	764	53.7%	410	38.0%	156
Fall 2007	686	63.8%	438	39.0%	171
Fall 2008	820	57.9%	475	40.2%	191
Fall 2009	781	66.7%	521	36.9%	192
Fall 2010	870	63.0%	548	40.9%	224
Fall 2011	894	64.1%	573	36.3%	208
Fall 2012	817	64.1%	524	35.9%	188
Fall 2013	775	62.2%	482	36.1%	174
Total					
Semester	# Applicants	Admit %	# Admits	Yield %	# Enrolls
Fall 2004	1,009	69.3%	699	55.4%	387
Fall 2005	1,020	69.1%	705	55.6%	392
Fall 2006	1,174	58.2%	683	52.9%	361
Fall 2007	1,085	68.3%	741	54.0%	400
Fall 2008	1,277	63.4%	809	56.7%	459
Fall 2009	1,250	70.4%	880	53.1%	467
Fall 2010	1,312	66.5%	873	55.2%	482
Fall 2011	1,314	67.2%	883	50.3%	444
Fall 2012	1,236	67.2%	831	51.3%	426
Fall 2013	1,180	67.3%	794	51.3%	407

Admit Rate (%): percent of applicants who are admitted to the University.

Yield Rate (%): percent of admitted students who enroll at UVM.

## Enrollments

### First-Time, First Year Enrollments by College

Total fall first-time, first year enrollments have increased 27.3% from Fall 2004 to Fall 2013. Over the ten-year period, only the College of Education & Social Services sees a decline of about 18.7% in first-time, first year enrollments. The School of Business Administration sees a 7.4% increase, and the other four schools/colleges, led by Nursing & Health Sciences and Engineering & Math Sciences, all made substantial gains.

Number of Enrollments in:	Fall									
	2004	2005	2006	2007	2008	2009	2010	2011	2012	2013
<b>Agriculture &amp; Life Sciences</b>	165	210	185	198	192	208	214	196	218	221
<b>Arts &amp; Sciences</b>	1,121	1,365	1,210	1,367	1,349	1,481	1,355	1,316	1,244	1,256
<b>Business Administration</b>	203	244	235	248	238	194	170	200	206	218
<b>Education &amp; Social Services</b>	166	187	150	159	153	171	172	139	119	135
<b>Engineering &amp; Mathematical Sci.</b>	124	165	148	200	194	220	233	249	229	274
<b>Environment &amp; Natural Resources</b>	87	126	136	99	158	154	137	131	132	154
<b>Nursing &amp; Health Sciences</b>	94	97	126	179	184	191	191	192	224	237
<b>TOTAL</b>	<b>1,960</b>	<b>2,394</b>	<b>2,190</b>	<b>2,450</b>	<b>2,468</b>	<b>2,619</b>	<b>2,472</b>	<b>2,423</b>	<b>2,372</b>	<b>2,495</b>

## Enrollments by College, Residence and Gender

Headcount enrollments serve as an unduplicated count or census of all students enrolled in the University. Headcount information allows us to aggregate or report enrollment information by student characteristics. The Fall 2013 enrollment report shows enrollments by residence, sex, student level and college or school in which the student's major is located. It should be noted that both full-time and part-time students are counted as "1" in headcount enrollment figures.

College/School/Unit	FALL 2013									FALL 2012 Total		
	Vermont			Out-of-State			TOTAL					
	Male	Female	Total	Male	Female	Total	Male	Female	Total			
Undergraduate												
	133	284	417	275	613	888	408	897	1,305	1,245		
	612	675	1,287	1,444	1,845	3,289	2,056	2,520	4,576	4,883		
	156	98	254	390	157	547	546	255	801	796		
	66	269	335	51	382	433	117	651	768	792		
	315	63	378	503	125	628	818	188	1,006	954		
	57	52	109	226	280	506	283	332	615	631		
	74	324	398	86	415	501	160	739	899	891		
Undergraduate Subtotal			1,413	1,765	3,178	2,975	3,817	6,792	4,388	5,582	9,970	10,192
Graduate												
	172	313	485	110	196	306	282	509	791	886		
	69	90	159	188	179	367	257	269	526	541		
	6	27	33	3	4	7	9	31	40	13		
	71	67	138	160	156	316	231	223	454	446		
Degree Student Subtotal			1,731	2,262	3,993	3,436	4,352	7,788	5,167	6,614	11,781	12,078
Non-Degree Students			269	426	695	114	133	247	383	559	942	1,019
Student Total			2,000	2,688	4,688	3,550	4,485	8,035	5,550	7,173	12,723	13,097

## Enrollments by College by Student Level

Over the past 10 years, the number of undergraduates has grown from slightly over 8,000 in 2004 to a plateau of around 10,000 in the past 5 years. Similarly, total degree students and total headcount have leveled off at around 12,000 and 13,000, respectively.

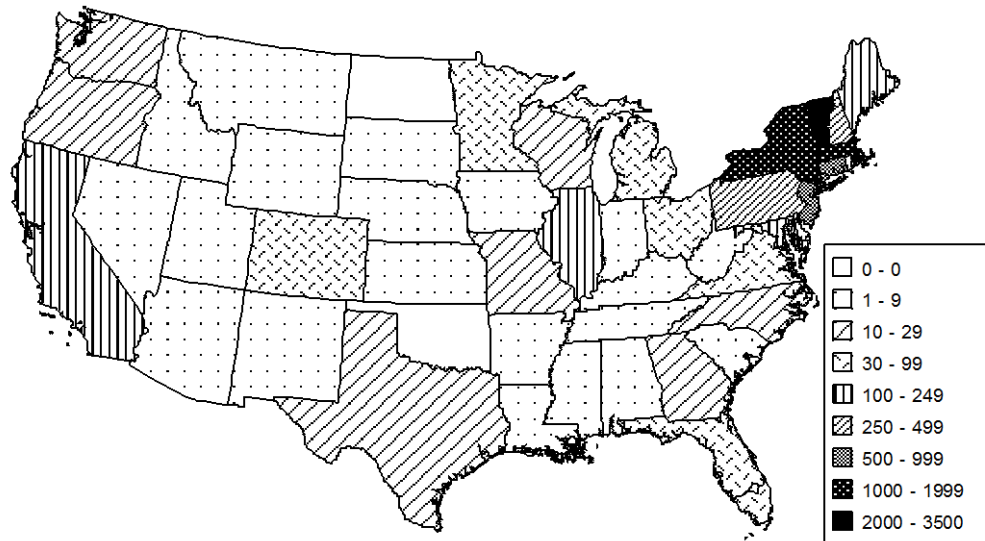
College/School/Unit	FALL									
	2004	2005	2006	2007	2008	2009	2010	2011	2012	2013
Agriculture & Life Sciences	762	834	922	965	992	1,070	1,117	1,192	1,245	1,305
Arts & Sciences	4,206	4,654	4,807	5,004	5,175	5,418	5,400	5,230	4,883	4,576
Business Administration	861	914	909	916	914	858	768	779	796	801
Education & Social Services	807	845	797	786	822	848	878	873	792	768
Engineering & Mathematical Sci.	582	591	592	656	730	872	916	957	954	1,006
Environment & Natural Res.	470	476	489	517	577	600	619	634	631	615
Nursing & Health Sciences	455	470	524	610	657	705	763	794	891	899
<b>Undergraduate Subtotal</b>	8,143	8,784	9,040	9,454	9,867	10,371	10,461	10,459	10,192	9,970
Graduate	1,273	1,300	1,351	1,290	1,384	1,516	1,490	1,530	1,427	1,317
Postbaccalaureate Certificate	30	32	31	30	26	33	19	17	13	40
Medicine	402	406	406	415	453	460	452	449	446	454
<b>Degree Student Subtotal</b>	9,848	10,522	10,828	11,189	11,730	12,380	12,422	12,455	12,078	11,781
Non-Degree Students	1,092	1,075	1,042	1,050	1,070	1,011	1,132	1,023	1,019	942
<b>Headcount Student Total</b>	10,940	11,597	11,870	12,239	12,800	13,391	13,554	13,478	13,097	12,723

## Graduate Enrollments by Academic Unit by Degree Level by Residence

Academic Unit	Degree Level	FALL 2013			Total Fall 2012
		Vermont	Out-of-State	Total	
Agriculture & Life Sciences	Masters	49	48	97	105
	Doctoral	9	35	44	46
	<b>Total</b>	<b>58</b>	<b>83</b>	<b>141</b>	<b>151</b>
Arts & Sciences	Masters	23	52	75	90
	Doctoral	16	112	128	119
	<b>Total</b>	<b>39</b>	<b>164</b>	<b>203</b>	<b>209</b>
Business Administration	Masters	31	25	56	72
	<b>Total</b>	<b>31</b>	<b>25</b>	<b>56</b>	<b>72</b>
Education & Social Services	Masters	222	73	295	343
	Doctoral	41	12	53	56
	Post-bac Cert.	3	2	5	3
	<b>Total</b>	<b>266</b>	<b>87</b>	<b>353</b>	<b>402</b>
Engineering & Mathematical Sciences	Masters	54	41	95	101
	Doctoral	21	50	71	80
	<b>Total</b>	<b>75</b>	<b>91</b>	<b>166</b>	<b>181</b>
Environment & Natural Resources	Masters	18	28	46	52
	Doctoral	14	30	44	38
	<b>Total</b>	<b>32</b>	<b>58</b>	<b>90</b>	<b>90</b>
Nursing & Health Sciences	Masters	82	32	114	110
	Doctoral	41	50	91	88
	Post-bac Cert.	3	0	3	2
	<b>Total</b>	<b>126</b>	<b>82</b>	<b>208</b>	<b>200</b>
All Other	Masters	7	6	13	13
	Doctoral	17	78	95	114
	Post-bac Cert.	27	5	32	8
	<b>Total</b>	<b>51</b>	<b>89</b>	<b>140</b>	<b>135</b>
<b>Headcount Graduate Subtotals</b>	<b>Masters</b>	<b>486</b>	<b>305</b>	<b>791</b>	<b>886</b>
	<b>Doctoral</b>	<b>159</b>	<b>367</b>	<b>526</b>	<b>541</b>
	<b>Post-bac Cert.</b>	<b>33</b>	<b>7</b>	<b>40</b>	<b>13</b>
	<b>Grand Total</b>	<b>678</b>	<b>679</b>	<b>1,357</b>	<b>1,440</b>

\* Includes Medicine-Basic Sciences, Clinical & Translational Science, Cellular, Molecular and Biomedical Sciences, and Neuroscience degree programs; Post-baccalaureate Certificate Programs offered through Continuing Education; Certificate of Graduate Study Programs offered by the Graduate College; and Post-baccalaureate certificate programs offered by the Colleges of Education & Social Services and Nursing & Health Sciences.

## Undergraduate Enrollment by State and Vermont County



Map does not include Alaska with 12 students, or Hawaii with 0.

Although UVM attracts students from 47 states and many foreign countries, the map above shows that UVM is primarily a regional institution, drawing most of its undergraduates from New England and the Middle Atlantic States.

Vermont Counties	
County	Enrollment
Chittenden	1,421
Washington	279
Windsor	231
Rutland	203
Franklin	159
Addison	155
Windham	151
Bennington	120
Caledonia	109
Orange	102
Lamoille	84
Orleans	70
Grand Isle	35
Essex	13
Not Available	46
<b>Total</b>	<b>3,178</b>

Chittenden county is home to more UVM students than any other Vermont county. In addition to Chittenden, there are also 200 or more undergraduates from Washington, Windsor and Rutland counties. Franklin, Addison, Windham, Bennington, Caledonia, and Orange counties all are home to more than 100 UVM undergraduates.

## Enrollments by Student Level by Residence

During the past 10 years, as the number of Vermont undergraduates rose from 2,998 to 3,178, the percent of Vermont undergraduates actually fell from 36.8% to 31.9% due to the strong growth in out-of-state enrollments. For post baccalaureates, the percent of Vermonters remained closer to parity with out-of-state students until 2009. Since that time, a slight decline has occurred. The only category where Vermont enrollments still dominate is non-degree.

Undergraduate					
Semester	# Vermont	# Out-of-State	# Total	% Vermont	% Out-of-State
Fall 2004	2,998	5,145	8,143	36.8%	63.2%
Fall 2005	3,158	5,626	8,784	36.0%	64.0%
Fall 2006	3,212	5,828	9,040	35.5%	64.5%
Fall 2007	3,284	6,170	9,454	34.7%	65.3%
Fall 2008	3,379	6,488	9,867	34.2%	65.8%
Fall 2009	3,564	6,807	10,371	34.4%	65.6%
Fall 2010	3,495	6,966	10,461	33.4%	66.6%
Fall 2011	3,483	6,976	10,459	33.3%	66.7%
Fall 2012	3,315	6,877	10,192	32.5%	67.5%
Fall 2013	3,178	6,792	9,970	31.9%	68.1%

Postbaccalaureate (Graduate, Certificate and Medical)					
Semester	# Vermont	# Out-of-State	# Total	% Vermont	% Out-of-State
Fall 2004	858	847	1,705	50.3%	49.7%
Fall 2005	880	858	1,738	50.6%	49.4%
Fall 2006	921	867	1,788	51.5%	48.5%
Fall 2007	861	874	1,735	49.6%	50.4%
Fall 2008	950	913	1,863	51.0%	49.0%
Fall 2009	985	1,024	2,009	49.0%	51.0%
Fall 2010	927	1,034	1,961	47.3%	52.7%
Fall 2011	943	1,053	1,996	47.2%	52.8%
Fall 2012	867	1,019	1,886	46.0%	54.0%
Fall 2013	815	996	1,811	45.0%	55.0%

Non-Degree					
Semester	# Vermont	# Out-of-State	# Total	% Vermont	% Out-of-State
Fall 2004	883	209	1,092	80.9%	19.1%
Fall 2005	852	223	1,075	79.3%	20.7%
Fall 2006	802	240	1,042	77.0%	23.0%
Fall 2007	810	240	1,050	77.1%	22.9%
Fall 2008	838	232	1,070	78.3%	21.7%
Fall 2009	779	232	1,011	77.1%	22.9%
Fall 2010	902	230	1,132	79.7%	20.3%
Fall 2011	789	234	1,023	77.1%	22.9%
Fall 2012	761	258	1,019	74.7%	25.3%
Fall 2013	695	247	942	73.8%	26.2%

## Enrollments by Student Level by Gender

Historically, men had out-numbered women on the UVM campus, except for the years of World War II. However, since 1972, that pattern has been firmly reversed in women's favor.

Semester	Undergraduate				
	# Male	# Female	# Total	% Male	% Female
Fall 2004	3,640	4,503	8,143	44.7%	55.3%
Fall 2005	3,974	4,810	8,784	45.2%	54.8%
Fall 2006	4,033	5,007	9,040	44.6%	55.4%
Fall 2007	4,272	5,182	9,454	45.2%	54.8%
Fall 2008	4,375	5,492	9,867	44.3%	55.7%
Fall 2009	4,587	5,784	10,371	44.2%	55.8%
Fall 2010	4,588	5,873	10,461	43.9%	56.1%
Fall 2011	4,643	5,816	10,459	44.4%	55.6%
Fall 2012	4,508	5,684	10,192	44.2%	55.8%
Fall 2013	4,388	5,582	9,970	44.0%	56.0%

Semester	Postbaccalaureate (Graduate, Certificate and Medical)				
	# Male	# Female	# Total	% Male	% Female
Fall 2004	696	1,009	1,705	40.8%	59.2%
Fall 2005	696	1,042	1,738	40.0%	60.0%
Fall 2006	700	1,088	1,788	39.1%	60.9%
Fall 2007	687	1,048	1,735	39.6%	60.4%
Fall 2008	742	1,121	1,863	39.8%	60.2%
Fall 2009	804	1,205	2,009	40.0%	60.0%
Fall 2010	811	1,150	1,961	41.4%	58.6%
Fall 2011	803	1,193	1,996	40.2%	59.8%
Fall 2012	802	1,084	1,886	42.5%	57.5%
Fall 2013	779	1,032	1,811	43.0%	57.0%

Semester	Non-Degree				
	# Male	# Female	# Total	% Male	% Female
Fall 2004	422	670	1,092	38.6%	61.4%
Fall 2005	440	635	1,075	40.9%	59.1%
Fall 2006	453	589	1,042	43.5%	56.5%
Fall 2007	421	629	1,050	40.1%	59.9%
Fall 2008	466	604	1,070	43.6%	56.4%
Fall 2009	432	579	1,011	42.7%	57.3%
Fall 2010	423	709	1,132	37.4%	62.6%
Fall 2011	386	637	1,023	37.7%	62.3%
Fall 2012	405	614	1,019	39.7%	60.3%
Fall 2013	383	559	942	40.7%	59.3%

## Multicultural and International Enrollments by College/School/Unit

Undergraduate multicultural students have increased by 53% and total multicultural students have increased by 46% from Fall 2008 to Fall 2013. Undergraduate international student enrollment is up 219% and total international student enrollment has increased by 58% over the same period.

College/School/Unit	Multicultural Students *						International Students **					
	Fall	Fall	Fall	Fall	Fall	Fall	Fall	Fall	Fall	Fall	Fall	Fall
	2008	2009	2010	2011	2012	2013	2008	2009	2010	2011	2012	2013
Agriculture & Life Sciences	64	86	118	118	126	126	5	8	11	14	19	23
Arts & Sciences	385	469	578	579	554	545	30	28	37	40	52	54
Business Administration	75	68	60	63	65	66	10	13	31	51	59	66
Education & Social Services	58	69	82	80	81	80	7	6	8	8	10	9
Engineering & Mathematical Sci.	32	50	69	88	86	103	7	13	18	22	37	40
Rubenstein School of Env. & Natural Resources	35	47	55	60	61	64	0	0	1	1	1	3
Nursing & Health Sciences	59	73	86	82	91	99	4	5	4	10	7	6
<b>Undergraduate Subtotal</b>	<b>708</b>	<b>862</b>	<b>1,048</b>	<b>1,070</b>	<b>1,064</b>	<b>1,083</b>	<b>63</b>	<b>73</b>	<b>110</b>	<b>146</b>	<b>185</b>	<b>201</b>
Graduate & Certificate	103	132	156	140	109	98	141	154	138	142	146	145
Medicine	86	76	99	102	113	113	1	17	12	8	6	1
Non-Degree	61	62	72	85	100	109	41	4	58	51	55	41
<b>Other Subtotal</b>	<b>250</b>	<b>270</b>	<b>327</b>	<b>327</b>	<b>322</b>	<b>320</b>	<b>183</b>	<b>175</b>	<b>208</b>	<b>201</b>	<b>207</b>	<b>187</b>
<b>Total</b>	<b>958</b>	<b>1,132</b>	<b>1,375</b>	<b>1,397</b>	<b>1,386</b>	<b>1,403</b>	<b>246</b>	<b>248</b>	<b>318</b>	<b>347</b>	<b>392</b>	<b>388</b>

\* Prior to fall 2010, multicultural includes US citizens or permanent residents whose self-reported race/ethnicity was African American, Native American, Asian American, Latino/Latina, or multi-racial. Beginning fall 2010, multicultural includes students whose self-reported race/ethnicity is African American, American Indian/Alaska Native, Asian, Native Hawaiian/Pacific Islander, Hispanic/Latino, or two or more races.

\*\* International includes students from other countries in the US on a non-permanent basis regardless of race or ethnic origin.

## Enrollments by Full-Time/Part-Time and Student Level

Most of UVM's undergraduates and all of its medical students are classified as full-time. However, nearly half of all graduate and certificate students, and most non-degree students, are enrolled on a part-time basis.

Student Level	Full-time Students					
	Fall 2008	Fall 2009	Fall 2010	Fall 2011	Fall 2012	Fall 2013
Undergraduate	9,513	10,034	10,125	10,086	9,803	9,621
Graduate and Certificate	670	733	717	805	848	783
Medicine	453	460	452	449	446	454
<b>Degree Student Subtotal</b>	<b>10,636</b>	<b>11,227</b>	<b>11,294</b>	<b>11,340</b>	<b>11,097</b>	<b>10,858</b>
Non-Degree Students	210	178	192	172	153	143
<b>Total</b>	<b>10,846</b>	<b>11,405</b>	<b>11,486</b>	<b>11,512</b>	<b>11,250</b>	<b>11,001</b>

Student Level	Part-time Students					
	Fall 2008	Fall 2009	Fall 2010	Fall 2011	Fall 2012	Fall 2013
Undergraduate	354	337	336	373	389	349
Graduate and Certificate	740	816	792	742	592	574
Medicine	0	0	0	0	0	0
<b>Degree Student Subtotal</b>	<b>1,094</b>	<b>1,153</b>	<b>1,128</b>	<b>1,115</b>	<b>981</b>	<b>923</b>
Non-Degree Students	860	833	940	851	866	799
<b>Total</b>	<b>1,954</b>	<b>1,986</b>	<b>2,068</b>	<b>1,966</b>	<b>1,847</b>	<b>1,722</b>

Student Level	Total Students					
	Fall 2008	Fall 2009	Fall 2010	Fall 2011	Fall 2012	Fall 2013
Undergraduate	9,867	10,371	10,461	10,459	10,192	9,970
Graduate and Certificate	1,410	1,549	1,509	1,547	1,440	1,357
Medicine	453	460	452	449	446	454
<b>Degree Student Subtotal</b>	<b>11,730</b>	<b>12,380</b>	<b>12,422</b>	<b>12,455</b>	<b>12,078</b>	<b>11,781</b>
Non-Degree Students	1,070	1,011	1,132	1,023	1,019	942
<b>Total</b>	<b>12,800</b>	<b>13,391</b>	<b>13,554</b>	<b>13,478</b>	<b>13,097</b>	<b>12,723</b>

## Full-Time Equivalent (FTE) Students Taught by Student Level

The trends in full-time equivalent (FTE) students taught closely parallel changes in headcount enrollments. Any deviations from this relationship would be due to students taking either a heavier or lighter course load.

Academic Year	Student Level				Total
	Undergraduate	Graduate*	Medicine	Non-Degree	
<b>2003-2004</b>	7,530.1	762.3	393.5	455.1	<b>9,141.0</b>
<b>2004-2005</b>	7,779.5	795.7	399.0	383.7	<b>9,357.9</b>
<b>2005-2006</b>	8,387.2	810.9	401.5	421.2	<b>10,020.8</b>
<b>2006-2007</b>	8,715.2	811.2	406.0	408.6	<b>10,341.0</b>
<b>2007-2008</b>	9,135.4	787.5	414.5	391.9	<b>10,729.3</b>
<b>2008-2009</b>	9,613.9	858.3	449.0	415.4	<b>11,336.6</b>
<b>2009-2010</b>	10,044.9	958.5	457.0	377.8	<b>11,838.2</b>
<b>2010-2011</b>	10,138.0	897.7	451.0	401.7	<b>11,888.4</b>
<b>2011-2012</b>	10,046.7	976.1	447.5	348.5	<b>11,818.8</b>
<b>2012-2013</b>	9,766.7	970.1	444.0	345.4	<b>11,526.2</b>

\* Includes postbaccalaureate certificate students.

## Graduation and Retention

### Degrees Awarded by Degree Level

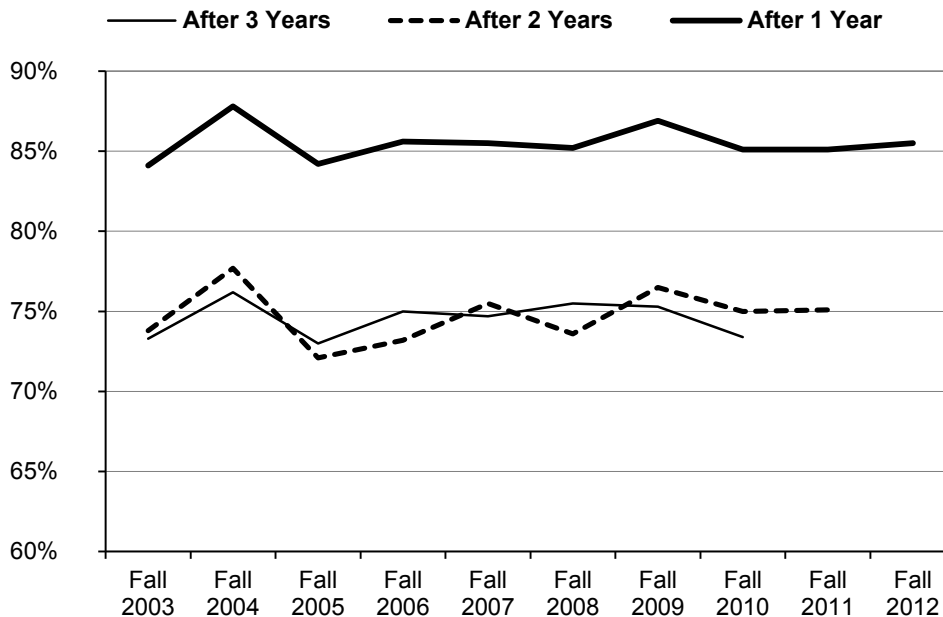
During the past 10 years, the total number of degrees and certificates awarded has increased by 44%. Bachelor's degrees account for 79% of the total degrees awarded during academic year 2012-13. Graduate programs - masters, doctorates and certificates - account for 18% of the awards and the professional medicine (MD) accounts for the final 3%.

Academic Year	Degree Level						Total
	Associate	Bachelor	Master	Doctorate	Medicine	Certificate	
<b>2003-2004</b>	20	1,675	384	53	90	29	<b>2,251</b>
<b>2004-2005</b>	0	1,795	430	59	88	20	<b>2,392</b>
<b>2005-2006</b>	0	1,807	352	61	97	16	<b>2,333</b>
<b>2006-2007</b>	0	1,913	399	57	97	22	<b>2,488</b>
<b>2007-2008</b>	0	2,004	361	84	81	25	<b>2,555</b>
<b>2008-2009</b>	0	2,215	317	80	105	15	<b>2,732</b>
<b>2009-2010</b>	0	2,341	373	105	108	28	<b>2,955</b>
<b>2010-2011</b>	0	2,422	391	97	111	19	<b>3,040</b>
<b>2011-2012</b>	0	2,506	425	93	114	19	<b>3,157</b>
<b>2012-2013</b>	0	2,562	438	122	106	15	<b>3,243</b>

## Retention Rates after One, Two and Three Years for First-time, First Year Students Entering Fall 2003 to 2012

Retention rates, i.e., the percent of entering students still enrolled each year, are closely related to graduation rates. In the past decade, roughly 84.1% to 87.8% of entering first-time, first year students enroll for their second year; after 2 years, about 72.1% to 77.7% of the class is still enrolled.

Reasons why students are not enrolled may include transferring to another school, academic dismissal, leave of absence, enrollment in a study abroad or co-op program, early graduation, and personal and financial reasons. Students returning from a study abroad or co-op program and leaves of absence help to explain why three year retention rates are usually higher than two year rates; students are returning to UVM after 1 or 2 semesters studying elsewhere or taking time off.

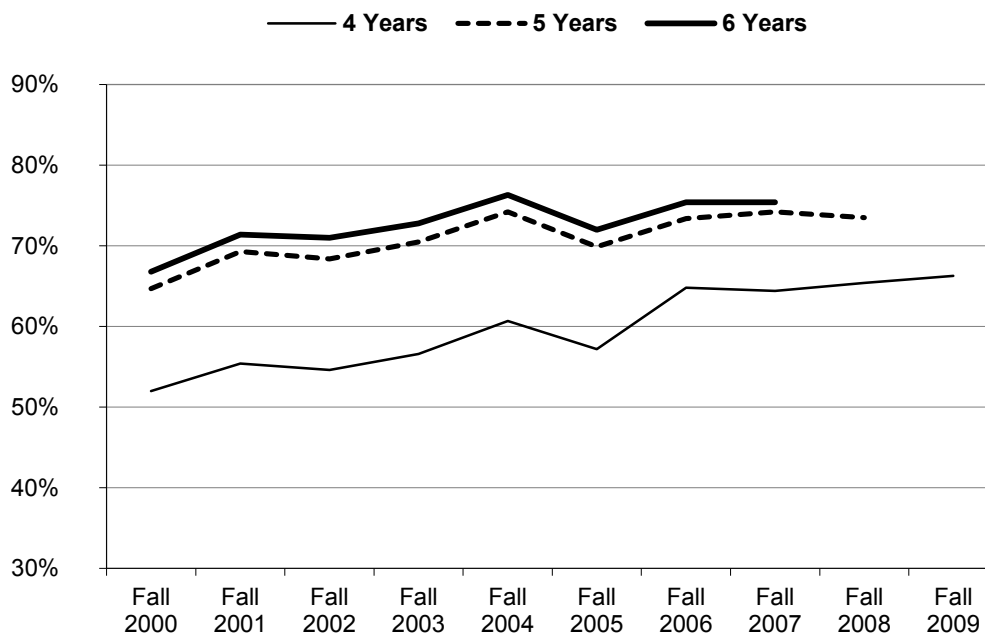


Class Entering	Percent Enrolled After		
	1 Year	2 Years	3 Years
Fall 2003	84.1%	73.8%	73.3%
Fall 2004	87.8%	77.7%	76.2%
Fall 2005	84.2%	72.1%	73.0%
Fall 2006	85.6%	73.2%	75.0%
Fall 2007	85.5%	75.5%	74.7%
Fall 2008	85.2%	73.6%	75.5%
Fall 2009	86.9%	76.5%	75.3%
Fall 2010	85.1%	75.0%	73.4%
Fall 2011	85.1%	75.1%	----
Fall 2012	85.5%	----	----

Note: 2010 is the last year with complete data.

## Graduation Rates after Four, Five and Six Years for First-time, First Year Students Entering Fall 2000 to 2009

The percent of students who successfully complete their degree programs is one of the University's most important "measures of success." About 75.4% of the first-time, first year class who entered in Fall 2007, the latest class for whom complete data is available, graduated within six years. There has been a steady improvement in the graduation rates since a relative low point of 65.3% in the class entering Fall 1999. It is important to note that UVM graduation rates compare favorably with those at other select public universities.



Class Entering	Percent Graduating in		
	4 Years	5 Years	6 Years
Fall 2000	52.0%	64.7%	66.8%
Fall 2001	55.4%	69.3%	71.4%
Fall 2002	54.6%	68.4%	71.0%
Fall 2003	56.6%	70.5%	72.8%
Fall 2004	60.7%	74.2%	76.3%
Fall 2005	57.2%	69.9%	72.0%
Fall 2006	64.8%	73.4%	75.4%
Fall 2007	64.4%	74.2%	75.4%
Fall 2008	65.4%	73.5%	----
Fall 2009	66.3%	----	----

Note: 2007 is the last year with complete data.

## Student Costs

### Comparison of Student Charges at Selected Public and Private Institutions, 2013-2014

The University of Vermont's tuition, fees, room and board rates in relation to selected public and private institutions, as expected, are high compared to public institutions and low compared to private institutions.

PUBLIC INSTITUTIONS	TUITION & FEES		ROOM & BOARD	TOTAL CHARGES	
	Resident	Non-Resident		Resident	Non-Resident
College of William & Mary	\$15,463	\$37,851	\$9,622	\$25,085	\$47,473
Stony Brook University	\$8,001	\$19,941	\$11,364	\$19,365	\$31,305
SUNY at Binghamton	\$8,144	\$18,464	\$12,688	\$20,832	\$31,152
University of Colorado Boulder	\$10,529	\$32,297	\$12,258	\$22,787	\$44,555
University of Connecticut	\$12,022	\$30,970	\$11,722	\$23,744	\$42,692
University of Massachusetts (Amherst)	\$13,415	\$26,830	\$10,439	\$23,854	\$37,269
<b>UNIVERSITY OF VERMONT</b>	<b>\$15,718</b>	<b>\$36,646</b>	<b>\$10,402</b>	<b>\$26,120</b>	<b>\$47,048</b>

PRIVATE INSTITUTIONS	TUITION & FEES	ROOM & BOARD	TOTAL STUDENT CHARGES
Boston College	\$45,622	\$12,884	\$58,506
Boston University	\$44,910	\$13,620	\$58,530
Syracuse University	\$40,458	\$14,054	\$54,512
George Washington University	\$47,343	\$10,850	\$58,193

Source: [www.CollegeBoard.com](http://www.CollegeBoard.com).

### Cost to Vermont Students Tuition, Fees, Room and Board

Fiscal Year	Tuition	Room*	Board *	Student Fees			Total	Percent Change	Constant \$'s	
				Comprehensive Student Fee ^	Student Activities	Inter-Residence Assoc Fee			Total	Percent Change
2005	9,088	4,710	2,306	996	118	24	\$17,242	5.7%	\$17,242	5.7%
2006	9,452	4,936	2,396	1,148	124	24	\$18,080	4.9%	\$17,335	0.5%
2007	9,832	5,150	2,492	1,326	142	24	\$18,966	4.9%	\$17,709	2.2%
2008	10,422	5,426	2,598	1,458	150	24	\$20,078	5.9%	\$17,847	0.8%
2009	11,048	5,752	2,782	1,616	150	30	\$21,378	6.5%	\$19,277	8.0%
2010	11,712	5,964	3,032	1,658	154	30	\$22,550	5.5%	\$20,116	4.4%
2011	12,180	6,196	3,156	1,702	154	30	\$23,418	3.8%	\$20,171	0.3%
2012	12,888	6,426	3,282	1,702	164	30	\$24,492	4.6%	\$20,756	2.9%
2013	13,344	6,650	3,414	1,742	168	30	\$25,348	3.5%	\$21,106	1.7%
2014	13,728	6,844	3,558	1,786	174	30	\$26,120	3.0%	\$21,322	1.0%

\* Room cost reflects Standard Double occupancy rate. Board cost reflects the Average Meal Plan rate.

^ A comprehensive fee is charged to all full-time students. It supports: Athletics and Athletic Complex, Center for Health & Wellbeing, Library, Dudley H. Davis Student Center, Campus Transportation System, Technology, Clean Energy Initiatives, Academic Support, and student services in the Registrar's Office.

### Cost to Out-of-State Students Tuition, Fees, Room and Board

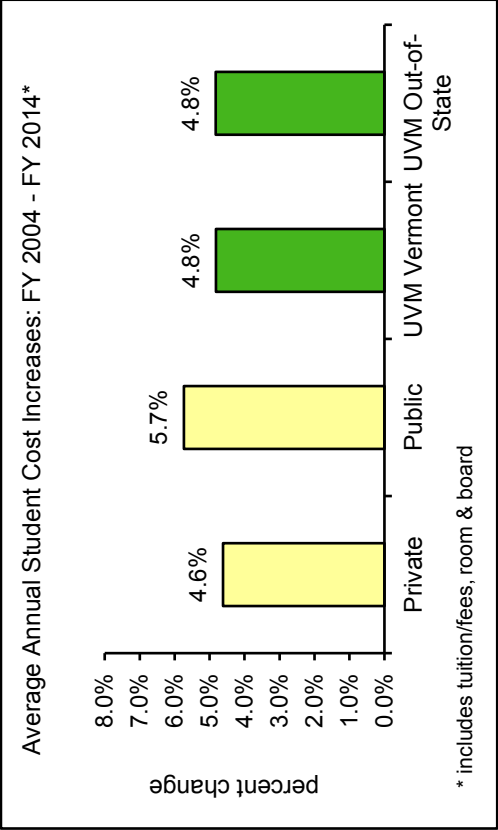
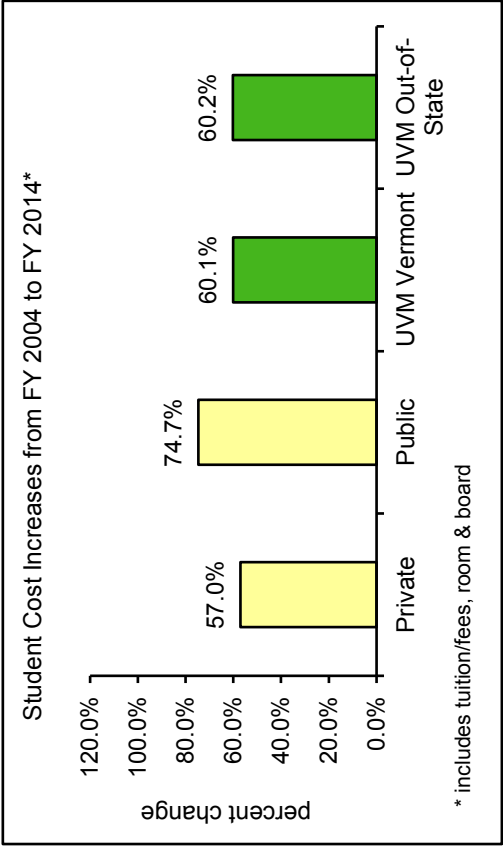
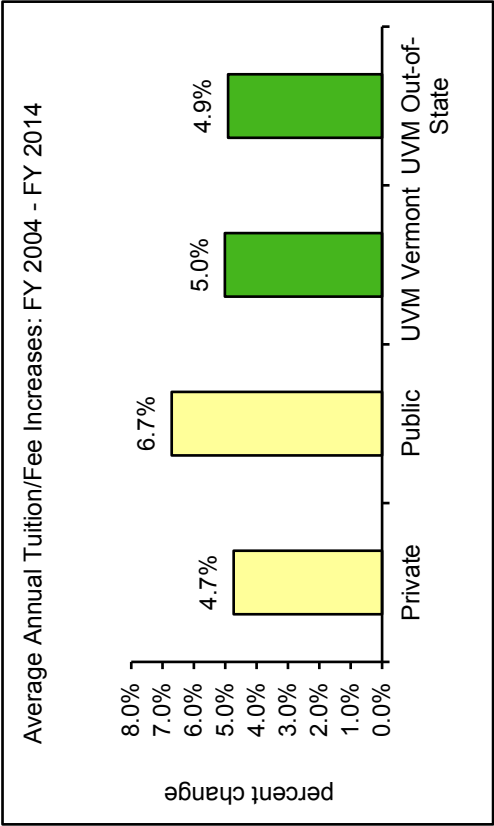
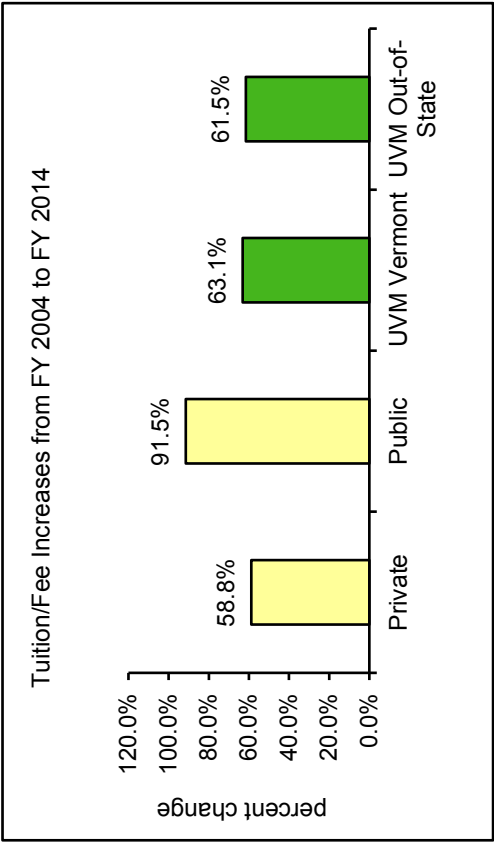
Fiscal Year	Tuition	Room*	Board *	Student Fees			Total	Percent Change	Constant \$'s	
				Comprehensive Student Fee ^	Student Activities	Inter-Residence Assoc Fee			Total	Percent Change
2005	22,728	4,710	2,306	996	118	24	\$30,882	5.2%	\$30,882	5.2%
2006	23,638	4,936	2,396	1,148	124	24	\$32,266	4.5%	\$30,936	0.2%
2007	24,816	5,150	2,492	1,326	142	24	\$33,950	5.2%	\$31,699	2.5%
2008	26,306	5,426	2,598	1,458	150	24	\$35,962	5.9%	\$31,967	0.8%
2009	27,886	5,752	2,782	1,616	150	30	\$38,216	6.3%	\$34,460	7.8%
2010	29,568	5,964	3,032	1,658	154	30	\$40,406	5.7%	\$36,045	4.6%
2011	30,744	6,196	3,156	1,702	154	30	\$41,982	3.9%	\$36,160	0.3%
2012	32,528	6,426	3,282	1,702	164	30	\$44,132	5.1%	\$37,400	3.4%
2013	33,672	6,650	3,414	1,742	168	30	\$45,676	3.5%	\$38,032	1.7%
2014	34,656	6,844	3,558	1,786	174	30	47,048	3.0%	38,407	1.0%

\* Room cost reflects Standard Double occupancy rate. Board cost reflects the Average Meal Plan rate.

^ A comprehensive fee is charged to all full-time students. It supports: Athletics and Athletic Complex, Center for Health & Wellbeing, Library, Dudley H. Davis Student Center, Campus Transportation System, Technology, Clean Energy Initiatives, Academic Support, and student services in the Registrar's Office.

# University of Vermont Student Cost Increases Compared to National Averages

The University of Vermont has been successful in keeping cost increases below national averages.



Source: The College Board, Trends in College Pricing 2013

# Student Aid

## Undergraduate Financial Aid

In FY 2013, 66% of our Vermont undergraduates and 54% of out-of-state students received need-based financial aid. In FY 2003 the corresponding percentages were 64% of enrolled Vermont students and 45% of out-of-state students:

	VERMONT STUDENTS		OUT-OF-STATE STUDENTS		UNDERGRADUATE TOTALS	
	FY 2012 Actual	FY 2013 Actual	FY 2012 Actual	FY 2013 Actual	FY 2012 Actual	FY 2013 Actual
<b>AID RECIPIENT DATA</b> <sup>1</sup>						
FAFSA Filers	2,792	2,632	4,599	4,553	7,391	7,185
% of Enrolled Students	80%	79%	66%	66%	71%	70%
Received Need-Based Aid	2,318	2,188	3,822	3,691	6,230	5,879
% of Enrolled Students	67%	66%	55%	54%	60%	58%
Average Expected Family Contribution <sup>2</sup>	\$13,394	\$14,090	\$24,139	\$25,710	\$20,081	\$21,454
All Students <sup>3</sup>						
Avg. Grants, Scholarships, Tuition Remission	\$8,875	\$8,927	\$10,038	\$10,788	\$9,651	\$10,181
Avg. Student Loans <sup>4</sup>	\$4,273	\$4,297	\$4,515	\$4,265	\$4,434	\$4,275
Avg. Federal Parent "PLUS" Loans	\$1,873	\$1,664	\$4,837	\$4,468	\$3,850	\$3,555
<b>TYPES OF AID</b>						
Grants & Scholarships	26,412,827	24,625,723	70,540,178	74,502,637	96,953,005	99,128,360
Loans						
Students	15,525,044	14,606,696	32,089,219	29,699,611	47,614,263	44,306,307
Parents	6,634,869	5,530,124	33,643,580	30,094,564	40,278,449	35,624,688
Federal Work Study Program	595,617	644,370	1,089,526	1,132,954	1,685,144	1,777,324
UVM Tuition Remission	5,136,437	5,629,998	336,184	482,680	5,472,621	6,112,678
TOTAL ALL TYPES	54,304,794	51,036,911	\$137,698,687	135,912,446	\$192,003,482	186,949,357
<b>SOURCES OF AID</b>						
Federal (campus-based)	2,237,779	2,289,192	2,782,820	2,766,097	5,020,599	5,055,289
Federal (other)	23,981,366	21,702,800	61,854,998	56,598,502	85,836,364	78,301,302
State	4,149,851	3,815,252	741,817	757,732	4,891,668	4,572,984
UVM <sup>5</sup>	21,804,673	15,288,738	61,397,373	65,007,563	83,202,046	80,296,301
Other (private sources)	2,131,125	7,940,929	10,921,679	10,782,552	13,052,804	18,723,481
TOTAL SOURCES OF AID	54,304,794	51,036,911	\$137,698,687	\$135,912,446	\$192,003,481	186,949,357

<sup>1</sup> Aid Recipient Data section uses Institutional Research's Fall Census populations

<sup>2</sup> Includes all FAFSA filers, including those with no financial need, which is a change from previous years

<sup>3</sup> Includes all undergraduates, even those that did not receive any financial aid

<sup>4</sup> All loans to the student, even including Federal unsubsidized Stafford Loans and alternative loans from private agencies

<sup>5</sup> Includes tuition remission

# Financial Aid Expenditures (in Thousand \$'s)

(Undergraduate, Graduate, and Medical)		FY 2004	FY 2005	FY 2006	FY 2007	FY 2008	FY 2009	FY 2010	FY 2011	FY 2012	FY 2013
<b>University Administered Funds:</b>											
<b>Loans and Work</b>											
Federal Work Study Program		2,401	2,701	2,078	2,140	2,125	2,489	3,007	1,641	1,816	1,888
Perkins Loan		2,672	1,900	1,632	2,202	1,896	1,848	1,266	697	1,288	1,391
UVM Loans		1,625	1,438	1,723	1,923	1,906	2,190	1,991	2,067	2,694	1,956
Green Mountain Loan <sup>1</sup>		5,837	6,625	6,843	6,167	5,224	5,358	0	0	0	0
Nursing Health Profession		224	180	188	177	144	169	125	142	93	51
Primary Care Loan (Medical)		48	38	115	81	0	0	0	0	44	25
<i>subtotal</i>		12,807	12,882	12,579	12,690	11,295	12,054	6,389	4,547	5,935	5,311
<b>Grants and Scholarships</b>											
Federal SEOG		1,981	2,011	1,941	1,668	1,809	1,812	2,061	2,634	2,498	2,413
UVM Restricted Funds		5,200	5,864	5,179	6,760	8,301	12,341	9,044	8,022	9,101	7,990
UVM Endowed Funds		2,747	3,632	3,605	3,418	3,584	5,000	4,591	3,484	3,867	4,220
UVM General Funds		26,017	29,063	32,790	34,349	38,868	40,869	58,569	64,805	64,690	68,330
UVM Athletic Funds		2,441	2,938	3,396	3,832	4,196	5,021	5,092	5,582	6,088	6,241
UVM Tuition Remission <sup>4</sup>		5,369	5,484	5,987	6,578	6,542	7,128	7,536	7,651	7,647	8,321
<i>subtotal</i>		43,755	48,992	52,898	56,605	63,300	72,171	86,893	92,178	93,891	97,515
<b>Other Aid From Outside Sources:</b>											
<b>Loans</b>											
Federal Stafford Loans		32,003	33,972	35,081	36,688	38,989	50,985	56,832	56,859	57,349	53,104
Private Agency Loans		6,424	9,177	12,317	10,166	11,457	10,153	8,359	8,975	10,463	9,959
Federal Graduate/Med "PLUS" Loans		0	0	13	2,481	2,622	4,057	6,639	6,401	6,562	5,884
Federal Parent "PLUS" Loans		19,330	21,780	27,066	29,393	28,653	29,695	35,145	36,982	40,593	36,108
<i>subtotal</i>		57,757	64,929	74,477	78,728	81,721	94,890	106,975	109,217	114,967	105,055
<b>Grants and Scholarships</b>											
Agency and Private Scholarships		3,038	3,371	3,742	4,216	4,515	5,121	4,553	4,331	4,695	4,362
Federal Pell Grant		3,816	3,957	3,738	3,892	4,390	4,880	8,303	9,346	9,393	8,782
Federal ACG and SMART Grants <sup>2</sup>		0	0	0	463	638	620	1,145	1,536	0	0
VSAC Grants and Scholarships		3,424	3,188	3,585	3,478	4,339	4,173	4,869	4,140	4,524	4,284
Grants From Other State Agencies		383	460	525	575	676	692	766	795	707	716
<i>subtotal</i>		10,661	10,976	11,590	12,624	14,558	15,486	19,636	20,148	19,319	18,144
<b>TOTAL - Student Financial Aid</b>		<b>124,980</b>	<b>137,779</b>	<b>151,544</b>	<b>160,547</b>	<b>170,874</b>	<b>194,601</b>	<b>219,893</b>	<b>226,090</b>	<b>234,112</b>	<b>226,025</b>
<b>Constant Dollar Comparison For Federal Funds (2004 \$) <sup>3</sup></b>											
<b>Federal Funds (Actual \$'s)</b>		\$10,870	\$10,569	\$9,389	\$9,902	\$10,220	\$11,029	\$14,637	\$14,318	\$14,995	\$14,474
<b>Percentage Change (Actual \$'s)</b>			-2.8%	-11.2%	5.5%	3.2%	7.9%	32.7%	-2.2%	4.7%	-3.5%
<b>Federal Funds (Constant \$'s)</b>		\$10,533	\$9,980	\$8,505	\$8,732	\$8,581	\$9,394	\$12,341	\$11,660	\$12,006	\$12,216
<b>Percentage Change (Constant \$'s)</b>			-5.2%	-14.8%	2.67%	-1.7%	9.5%	31.4%	-5.5%	3.0%	1.8%

NOTE: The figures presented include Graduate and Medical student aid except for graduate stipends and fellowships

<sup>1</sup> The Green Mountain Loan program originated in FY 2002 and ended after FY 2009

<sup>2</sup> The federal program for ACG and SMART Grants was a five-year program from FY07 to FY11.

<sup>3</sup> Includes Federal Work Study Program, Perkins Loans, Supplemental Educational Opportunity Grant (SEOG), and Pell Grants

<sup>4</sup> Tuition Remission figures were recalculated for all years in September 2012. The figures previously only included undergraduate students.

# Personnel Information

# Personnel Information

## Faculty

### FY 2013 Faculty Headcount and FTE by Unit

Unit	Headcount			FTE	
	Full-time	Part-time	All	University	General Fund
Agriculture & Life Sciences	57	21	78	66.0	45.5
Arts & Sciences	321	59	380	346.5	326.1
Business Administration	28	8	36	29.6	28.6
Education & Social Services	76	18	94	81.0	57.9
Engineering & Mathematical Sciences	77	13	90	81.9	67.5
Environment & Natural Resources	37	10	47	39.6	29.5
Nursing & Health Sciences	49	34	83	60.6	52.9
Other	1	1	2	1.2	0.2
All Except Medicine	646	164	810	706.4	608.2
Medicine	554	120	674	638.2	n/a
<b>Total</b>	1200	284	1484	1344.6	n/a
Extension	23	0	23	23.0	n/a
Library	25	3	28	27.2	n/a

Includes paid instructional, research, clinical, and visiting faculty.

Headcount and University FTE are from the fall of the fiscal year.

General Fund FTE is the portion of a faculty member's University FTE paid by General Funds.

"Other" includes Honors College, and General Institutional.

## Faculty Headcount and University FTE by Fall

Since Fall 2003, the University of Vermont has experienced a 22% increase in full-time faculty, almost all in the not tenure track ranks.

	Fall										Overall Change
	2003	2004	2005	2006	2007	2008	2009	2010	2011	2012	
<b>Full-time</b>											
<b>Tenure Track</b>	590	596	599	603	605	614	601	601	588	599	+1.5%
<b>Not Tenure Track</b>	391	397	418	439	454	467	467	476	593	601	+53.7%
<b>Total</b>	981	993	1017	1042	1059	1081	1068	1077	1181	1200	+22.3%
<b>Part-time</b>											
<b>Tenure Track</b>	6	4	7	7	5	8	12	9	11	7	+16.7%
<b>Not Tenure Track</b>	187	188	211	244	240	214	223	230	279	277	+48.1%
<b>Total</b>	193	192	218	251	245	222	235	239	290	284	+47.2%
<b>All</b>	1174	1185	1235	1293	1304	1303	1303	1316	1471	1484	+26.4%
<b>University FTE</b>	1061.1	1076.9	1109.2	1150.7	1167.4	1181.9	1175.7	1182.7	1326.1	1344.6	+26.7%

Includes paid instructional, research, clinical, and visiting faculty.

A large faculty increase for Fall 2011 is a result of the 2010 Affiliation Agreement between UVM and FAHC.

**The University of Vermont and Its Track Institutions:  
2012-2013 Average Salaries for Tenure Track Ranks**  
(In thousands \$'s)

Professor			Associate Professor			Assistant Professor		
Institution	Average Salary	Rank	Institution	Average Salary	Rank	Institution	Average Salary	Rank
Dartmouth Coll	\$167.4	1	Dartmouth Coll	\$111.5	1	Cornell U-Endowed Colleges	\$97.8	1
Cornell U-Endowed Colleges	\$159.8	2	Cornell U-Endowed Colleges	\$110.7	2	Boston U	\$91.0	2
Boston Coll	\$159.2	3	Boston U	\$106.9	3	Dartmouth Coll	\$89.4	3
Boston U	\$157.0	4	Boston Coll	\$103.4	4	Boston Coll	\$88.3	4
U North Carolina-Chapel Hill	\$147.9	5	Tufts U	\$101.2	5	Ohio St U-Main	\$85.1	5
U Virginia	\$143.2	6	SUNY-Stony Brook	\$98.7	6	U North Carolina-Chapel Hill	\$84.4	6
SUNY-Stony Brook	\$142.4	7	U North Carolina-Chapel Hill	\$96.6	7	Tufts U	\$82.9	7
Tufts U	\$138.4	8	U Massachusetts-Amherst	\$95.2	8	U Virginia	\$82.9	7
<b>Weighted Average</b>	\$137.4		<b>Weighted Average</b>	\$94.2		<b>Weighted Average</b>	\$79.9	
Ohio St U-Main	\$136.9	9	U Virginia	\$93.8	9	U Colorado-Boulder	\$79.4	9
U Connecticut	\$136.8	10	U New Hampshire	\$92.3	10	SUNY-Stony Brook	\$78.9	10
SUNY-Buffalo	\$133.7	11	U Colorado-Boulder	\$92.2	11	SUNY-Buffalo	\$78.5	11
U Massachusetts-Amherst	\$131.1	12	Ohio St U-Main	\$92.0	12	U Massachusetts-Amherst	\$77.9	12
SUNY-Albany	\$129.0	13	U Connecticut	\$91.9	13	U New Hampshire	\$76.9	13
Middlebury Coll	\$128.6	14	SUNY-Buffalo	\$91.8	14	SUNY-Albany	\$75.9	14
U Colorado-Boulder	\$127.8	15	SUNY-Binghamton	\$91.4	15	Middlebury Coll	\$75.9	15
SUNY-Binghamton	\$127.3	16	Clarkson U	\$91.2	16	Syracuse U	\$75.5	15
Syracuse U	\$122.8	17	SUNY-Albany	\$90.9	17	Clarkson U	\$75.1	17
U New Hampshire	\$118.8	18	Middlebury Coll	\$89.6	18	U Connecticut	\$73.9	18
Coll William and Mary	\$118.6	19	Syracuse U	\$87.7	19	SUNY-Binghamton	\$73.5	19
<b>U Vermont</b>	<b>\$116.5</b>	20	<b>U Vermont</b>	<b>\$86.0</b>	20	<b>U Vermont</b>	<b>\$70.1</b>	20
Clarkson U	\$116.1	21	Coll William and Mary	\$84.6	21	Coll William and Mary	\$67.5	21
U Rhode Island	\$105.1	22	U North Dakota-Main	\$80.5	22	U Rhode Island	\$67.4	22
U North Dakota-Main	\$99.0	23	U Rhode Island	\$78.7	23	U North Dakota-Main	\$65.3	23
U Maine-Orono	\$96.2	24	U Maine-Orono	\$77.3	24	U Maine-Orono	\$60.2	24

Source: "The Annual Report on the Economic Status of the Profession: 2012-2013". AAUP: Academe.

## FY 2013 Average Faculty Salary by Unit by Tenure Track Rank

The University of Vermont and  
the Association of Public and Land-Grant Universities (APLU)

	<u>Unit</u>	<u>Professor</u>	<u>Associate Professor</u>	<u>Assistant Professor</u>
<b>UVM</b>	Agriculture & Life Sciences	\$114,385	\$88,101	\$66,493
	Arts & Sciences	\$110,407	\$77,873	\$64,372
	Business Administration	\$164,316	\$143,398	\$129,681
	Education & Social Services	\$114,137	\$79,431	\$64,882
	Engineering & Mathematical Sciences	\$130,533	\$102,546	\$83,218
	Environment & Natural Resources	\$106,885	\$87,622	\$59,846
	Nursing & Health Sciences	\$114,458	\$84,106	\$66,407
<b>APLU</b>	Agriculture & Life Sciences	\$124,750	\$83,307	\$73,769
	Arts & Sciences	\$114,361	\$77,160	\$64,132
	Business Administration	\$183,831	\$136,074	\$132,458
	Education & Social Services	\$111,013	\$75,128	\$62,541
	Engineering & Mathematical Sciences	\$126,267	\$94,069	\$79,950
	Environment & Natural Resources	\$107,027	\$81,017	\$67,944
	Nursing & Health Sciences	\$115,985	\$80,998	\$67,282

The AAUP multiplier of 0.818 was used to convert twelve-month salaries to nine-month salaries.

Source: 2012-2013 Faculty Salary Survey of Institutions Belonging to Association of Public and Land-Grant Universities. Oklahoma State University: March 2013.

## Faculty and Staff

### Faculty and Staff Headcount by Full-time/Part-time

	Fall	Faculty					Staff		All	
		Instructional & Research	Extension	Library	Total	Index	Total	Index	Total	Index
<b>Full-time</b>	<b>2003</b>	981	44	24	1049	100.0	2021	100.0	3070	100.0
	<b>2004</b>	993	38	24	1055	100.6	2082	103.0	3137	102.2
	<b>2005</b>	1017	33	24	1074	102.4	2152	106.5	3226	105.1
	<b>2006</b>	1042	30	25	1097	104.6	2152	106.5	3249	105.8
	<b>2007</b>	1059	30	25	1114	106.2	2174	107.6	3288	107.1
	<b>2008</b>	1081	28	25	1134	108.1	2235	110.6	3369	109.7
	<b>2009</b>	1068	25	28	1121	106.9	2200	108.9	3321	108.2
	<b>2010</b>	1077	26	27	1130	107.7	2213	109.5	3343	108.9
	<b>2011</b>	1181	23	25	1229	117.2	2192	108.5	3421	111.4
	<b>2012</b>	1200	23	25	1248	119.0	2168	107.3	3416	111.3
<b>Part-time</b>	<b>2003</b>	193	1	3	197	100.0	194	100.0	391	100.0
	<b>2004</b>	192	1	2	195	99.0	199	102.6	394	100.8
	<b>2005</b>	218	0	2	220	111.7	198	102.1	418	106.9
	<b>2006</b>	251	0	2	253	128.4	208	107.2	461	117.9
	<b>2007</b>	245	0	2	247	125.4	199	102.6	446	114.1
	<b>2008</b>	222	0	3	225	114.2	183	94.3	408	104.3
	<b>2009</b>	235	0	2	237	120.3	203	104.6	440	112.5
	<b>2010</b>	239	0	2	241	122.3	211	108.8	452	115.6
	<b>2011</b>	290	0	2	292	148.2	198	102.1	490	125.3
	<b>2012</b>	284	0	3	287	145.7	168	86.6	455	116.4
<b>All</b>	<b>2003</b>	1174	45	27	1246	100.0	2215	100.0	3461	100.0
	<b>2004</b>	1185	39	26	1250	100.3	2281	103.0	3531	102.0
	<b>2005</b>	1235	33	26	1294	103.9	2350	106.1	3644	105.3
	<b>2006</b>	1293	30	27	1350	108.3	2360	106.5	3710	107.2
	<b>2007</b>	1304	30	27	1361	109.2	2373	107.1	3734	107.9
	<b>2008</b>	1303	28	28	1359	109.1	2418	109.2	3777	109.1
	<b>2009</b>	1303	25	30	1358	109.0	2403	108.5	3761	108.7
	<b>2010</b>	1316	26	29	1371	110.0	2424	109.4	3795	109.7
	<b>2011</b>	1471	23	27	1521	122.1	2390	107.9	3911	113.0
	<b>2012</b>	1484	23	28	1535	123.2	2336	105.5	3871	111.8

"Instructional & Research" faculty includes clinical and visiting. Fall 2003 is the index base.

A large faculty increase for Fall 2011 is a result of the 2010 Affiliation Agreement between UVM and FAHC.

## Full-time Faculty and Staff Headcount by Race/Ethnicity

Employee Type	Race/Ethnicity	Fall						
		2006	2007	2008	2009	2010	2011	2012
<b>Faculty</b> Instructional Tenure Track	Hispanic or Latino	16	14	11	13	14	16	16
	American Indian or Alaska Native	3	4	4	1	0	0	0
	Asian	35	36	41	47	46	48	48
	Black or African American	14	14	17	21	21	21	17
	Native Hawaiian or Other Pacific Islander	--	--	--	--	2	2	2
	Two or More Races	--	--	--	--	3	3	4
	ALANA Total	68	68	73	82	86	90	87
	White	515	514	517	502	499	484	492
	Race and Ethnicity Unknown	--	--	--	--	3	2	2
	Nonresident Alien	20	23	24	17	13	12	18
<b>Total</b>		603	605	614	601	601	588	599
<b>Faculty</b> Instructional & Research Not Tenure Track	Hispanic or Latino	5	7	14	11	10	12	14
	American Indian or Alaska Native	1	1	1	1	1	1	1
	Asian	18	20	21	23	25	33	33
	Black or African American	4	5	7	8	8	11	9
	Native Hawaiian or Other Pacific Islander	--	--	--	--	0	0	0
	Two or More Races	--	--	--	--	1	2	3
	ALANA Total	28	33	43	43	45	59	60
	White	387	389	397	406	408	503	508
	Race and Ethnicity Unknown	--	--	--	--	5	14	14
	Nonresident Alien	24	32	27	18	18	17	19
<b>Total</b>		439	454	467	467	476	593	601
<b>Faculty</b> Extension & Library	Hispanic or Latino	0	0	0	1	0	0	0
	American Indian or Alaska Native	0	0	0	0	0	0	0
	Asian	1	1	1	1	1	0	0
	Black or African American	0	0	0	0	0	0	0
	Native Hawaiian or Other Pacific Islander	--	--	--	--	0	0	0
	Two or More Races	--	--	--	--	0	0	0
	ALANA Total	1	1	1	2	1	0	0
	White	54	54	52	51	52	48	48
	Race and Ethnicity Unknown	--	--	--	--	0	0	0
	Nonresident Alien	0	0	0	0	0	0	0
<b>Total</b>		55	55	53	53	53	48	48
<b>Staff</b>	Hispanic or Latino	33	33	28	35	40	43	50
	American Indian or Alaska Native	14	13	13	11	13	10	10
	Asian	77	85	96	95	89	96	97
	Black or African American	39	41	44	48	49	49	49
	Native Hawaiian or Other Pacific Islander	--	--	--	--	2	2	2
	Two or More Races	--	--	--	--	20	23	23
	ALANA Total	163	172	181	189	213	223	231
	White	1927	1949	1988	1952	1922	1887	1853
	Race and Ethnicity Unknown	--	--	--	--	23	32	42
	Nonresident Alien	62	53	66	59	55	50	42
<b>Total</b>		2152	2174	2235	2200	2213	2192	2168
<b>All</b>	Hispanic or Latino	54	54	53	60	64	71	80
	American Indian or Alaska Native	18	18	18	13	14	11	11
	Asian	131	142	159	166	161	177	178
	Black or African American	57	60	68	77	78	81	75
	Native Hawaiian or Other Pacific Islander	--	--	--	--	4	4	4
	Two or More Races	--	--	--	--	24	28	30
	ALANA Total	260	274	298	316	345	372	378
	White	2883	2906	2954	2911	2881	2922	2901
	Race and Ethnicity Unknown	--	--	--	--	31	48	58
	Nonresident Alien	106	108	117	94	86	79	79
<b>Total</b>		3249	3288	3369	3321	3343	3421	3416

Before Fall 2010, Asian included Pacific Islander, White included Unknown, and UVM recorded only one race/ethnicity per person.  
A large faculty increase for Fall 2011 is a result of the 2010 Affiliation Agreement between UVM and FAHC.

## Full-time Faculty and Staff Headcount by Gender

Employee Type	Gender	Fall						
		2006	2007	2008	2009	2010	2011	2012
<b>Faculty</b>	Female	192	198	206	201	208	219	228
Instructional	Male	411	407	408	400	393	369	371
Tenure Track	Total	603	605	614	601	601	588	599
<b>Faculty</b>	Female	184	192	206	202	208	244	253
Instructional & Research	Male	255	262	261	265	268	349	348
Not Tenure Track	Total	439	454	467	467	476	593	601
<b>Faculty</b>	Female	33	33	32	30	32	26	25
Extension & Library	Male	22	22	21	23	21	22	23
	Total	55	55	53	53	53	48	48
<b>Staff</b>	Female	1321	1332	1385	1358	1358	1350	1337
	Male	831	842	850	842	855	842	831
	Total	2152	2174	2235	2200	2213	2192	2168
<b>All</b>	Female	1730	1755	1829	1791	1806	1839	1843
	Male	1519	1533	1540	1530	1537	1582	1573
	Total	3249	3288	3369	3321	3343	3421	3416

A large faculty increase for Fall 2011 is a result of the 2010 Affiliation Agreement between UVM and FAHC.

## Faculty & Staff Total Compensation

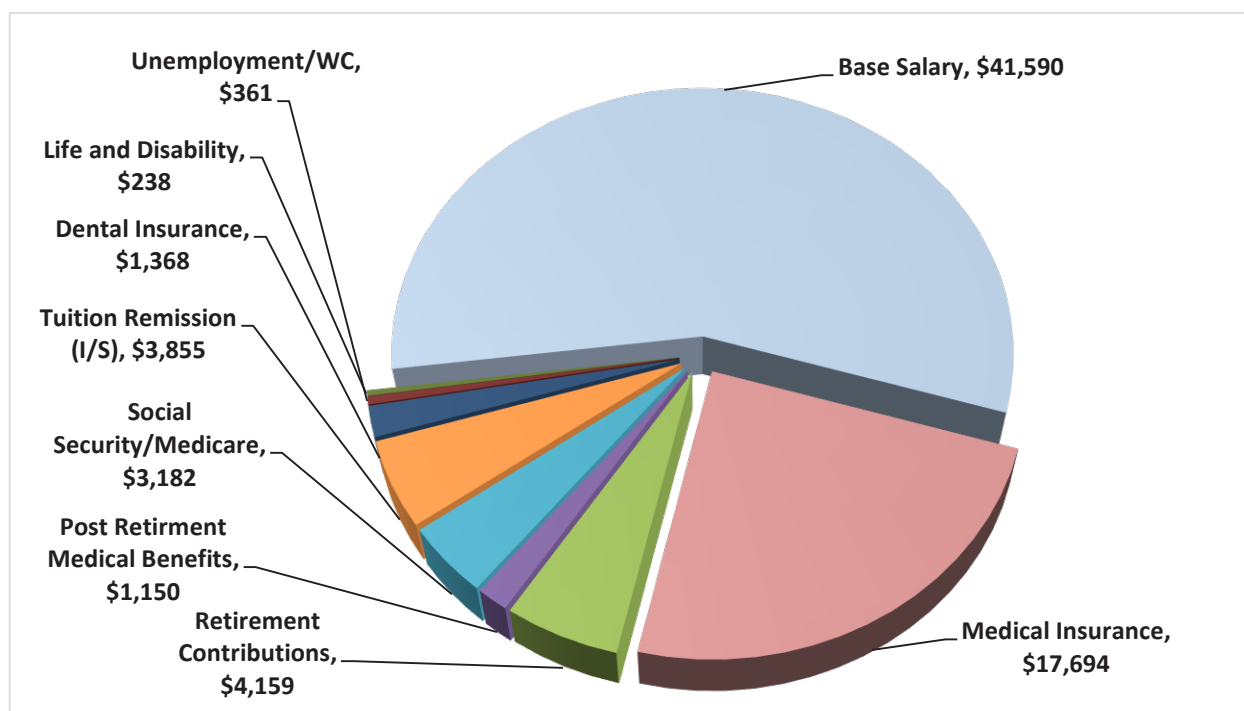
What goes into the compensation pie UVM faculty and staff earn for the work they perform? The biggest slice is the base wage or salary. Other slices of the pie vary, depending on many different factors including marital status, years of service, presence of dependent children, age, retirement plan participation, and tuition remission use.

Benefits enlarge the pie from a slice to the full and complete compensation package. UVM's benefits package is composed of many ingredients, each one contributing to the worth and wellbeing of the faculty and staff members of the UVM community. In fact,

To illustrate, here is a profile of a UVM non-union staff person, a 43-year-old employee, married, with two children, contributing to the retirement plan and attending six credits of UVM classes.

Assuming a position with an annual salary of \$41,590 and costs for insurance as of July 2013, her total yearly compensation pie looks like this:

**Key Components of Total Compensation  
One Example**



In this example, base salary represents fifty-eight [58] percent of the total compensation package. In addition to the elements above, she also qualifies for 12 paid holidays, 2 personal days, 15 vacation days and up to 12 days for medical leave. The value of post-retirement medical benefits are not included; in addition tuition remission for faculty and staff dependents are also excluded. Currently full-time in-state academic year tuition is \$15,688.

The actual details and the value of the total compensation package will vary depending on the specific family circumstances, salary, and benefit choices made by an employee.

## Salary Trends

### Comparison of UVM Salary Increases to CPI

General Fund salary budget increases for the entire university are measured against the Consumer Price Index (CPI) as of FY 2005.

Fiscal Year	UVM Salary Increase %	CPI % Change	UVM Salary Increase	CPI Index
FY 2005 <sup>1,2</sup>	4.0%	0.0%	122.2	100.0
FY 2005 <sup>3</sup>	5.7%	0.0%	127.6	100.0
FY 2005 <sup>4</sup>	5.7%	0.0%	127.6	100.0
FY 2006 <sup>1</sup>	4.5%	4.3%	127.7	104.3
FY 2006 <sup>2</sup>	4.0%	4.3%	127.1	104.3
FY 2006 <sup>3</sup>	3.0%	4.3%	131.4	104.3
FY 2006 <sup>4</sup>	4.5%	4.3%	133.4	104.3
FY 2007 <sup>1</sup>	4.5%	2.7%	133.5	107.1
FY 2007 <sup>2</sup>	4.0%	2.7%	132.2	107.1
FY 2007 <sup>3</sup>	4.5%	2.7%	137.4	107.1
FY 2007 <sup>4</sup>	6.0%	2.7%	141.4	107.1
FY 2008 <sup>1</sup>	4.5%	5.0%	139.5	112.5
FY 2008 <sup>2</sup>	4.0%	5.0%	137.5	112.5
FY 2008 <sup>3</sup>	4.5%	5.0%	143.5	112.5
FY 2008 <sup>4</sup>	5.8%	5.0%	149.5	112.5
FY 2009 <sup>1</sup>	3.8%	-1.4%	144.8	110.9
FY 2009 <sup>2</sup>	4.0%	-1.4%	143.0	110.9
FY 2009 <sup>3</sup>	5.0%	-1.4%	150.7	110.9
FY 2009 <sup>4</sup>	5.0%	-1.4%	157.0	110.9
FY 2010 <sup>1,5</sup>	2.0%	1.1%	147.7	112.1
FY 2010 <sup>2</sup>	4.0%	1.1%	148.7	112.1
FY 2010 <sup>3</sup>	5.0%	1.1%	158.3	112.1
FY 2010 <sup>4</sup>	5.0%	1.1%	164.8	112.1
FY 2011 <sup>1,5</sup>	2.0%	3.6%	150.6	116.1
FY 2011 <sup>2</sup>	2.0%	3.6%	151.7	116.1
FY 2011 <sup>3</sup>	5.0%	3.6%	166.2	116.1
FY 2011 <sup>4</sup>	5.0%	3.6%	173.1	116.1
FY 2012 <sup>1,5</sup>	0.0%	1.6%	150.6	118.0
FY 2012 <sup>2</sup>	0.0%	1.6%	151.7	118.0
FY 2012 <sup>3</sup>	0.0%	1.6%	166.2	118.0
FY 2012 <sup>4</sup>	0.0%	1.6%	173.1	118.0
FY 2013 <sup>1,5</sup>	2.0%	1.8%	153.7	120.1
FY 2013 <sup>2</sup>	2.0%	1.8%	154.7	120.1
FY 2013 <sup>3</sup>	2.0%	1.8%	169.5	120.1
FY 2013 <sup>4</sup>	2.0%	1.8%	176.5	120.1
FY 2014 <sup>1,5</sup>	2.9%	2.0% *	158.1	122.5 *
FY 2014 <sup>2</sup>	2.9%	2.0% *	159.2	122.5 *
FY 2014 <sup>3</sup>	2.9%	2.0% *	174.4	122.5 *
FY 2014 <sup>4</sup>	2.9%	2.0% *	181.6	122.5 *

<sup>1</sup> Non-Represented Staff

<sup>2</sup> Represented Staff - Teamster

<sup>3</sup> Non-Represented Faculty

<sup>4</sup> Represented Faculty

<sup>5</sup> Represented Staff - United Electrical

\* Estimated

### Growth of UVM Payroll & Benefit Costs

About 64.69% of UVM's total operating budget is spent on compensation. For FY 2014, compensation costs are estimated at almost \$380,261,641. The growth in benefit costs over the past 10 years has outpaced the growth in payroll costs by 69.6%.

Fiscal Year	Payroll Costs		Benefit Costs		Total Compensation Costs
	Total	Growth Index	Total	Growth Index	
FY 2004	\$178,154,176	100.0	\$56,455,186	100.0	\$234,609,362
FY 2005	\$188,688,882	105.9	\$60,147,713	106.5	\$248,836,595
FY 2006 <sup>1</sup>	\$199,136,955	111.8	\$75,853,378	134.4	\$274,990,333
FY 2007	\$222,078,384	124.7	\$81,798,797	144.9	\$303,877,181
FY 2008 <sup>2</sup>	\$230,129,162	129.2	\$111,458,627	197.4	\$341,587,788
FY 2009	\$240,122,264	134.8	\$116,820,512	206.9	\$356,942,776
FY 2010	\$245,853,729	138.0	\$113,626,644	201.3	\$359,480,373
FY 2011	\$255,135,874	143.2	\$121,331,142	214.9	\$376,467,016
FY 2012	\$256,488,429	144.0	\$117,340,340	207.8	\$373,828,769
FY 2013	\$261,617,916	146.8	\$120,504,527	213.5	\$382,122,443
FY 2014 <sup>3</sup>	\$266,850,274	149.8	\$123,878,654	219.4	\$390,728,928

Source: University of Vermont Financial Report .

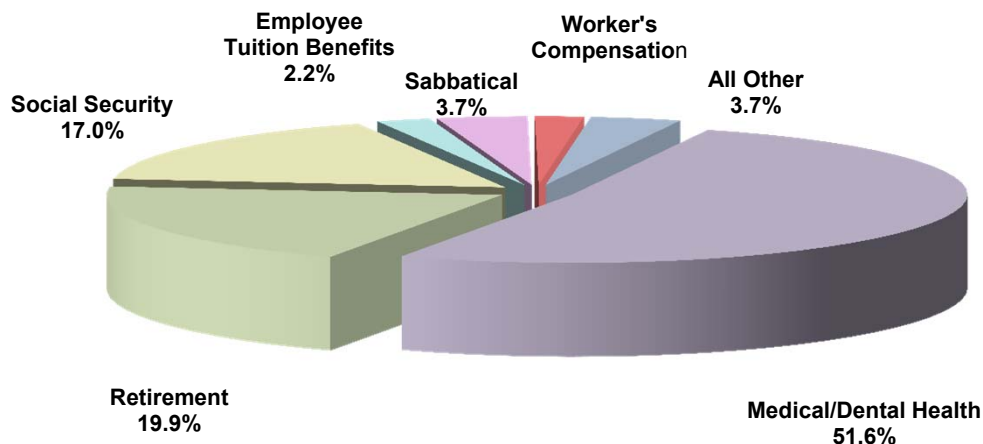
<sup>1</sup> Starting in FY 2006, benefit costs restated to include the reclassification of tuition remission.

<sup>2</sup> Starting in FY 2008, postemployment benefit cost is recorded as benefit expense, which accounts for an additional \$26 million.

<sup>3</sup> Estimated total compensation.

### Components of Projected FY 2014 Benefit Expense Budget

As shown below, the largest components of benefit expenses are medical/dental health, retirement, and social security, which comprise 88.5% of total benefit expenses.





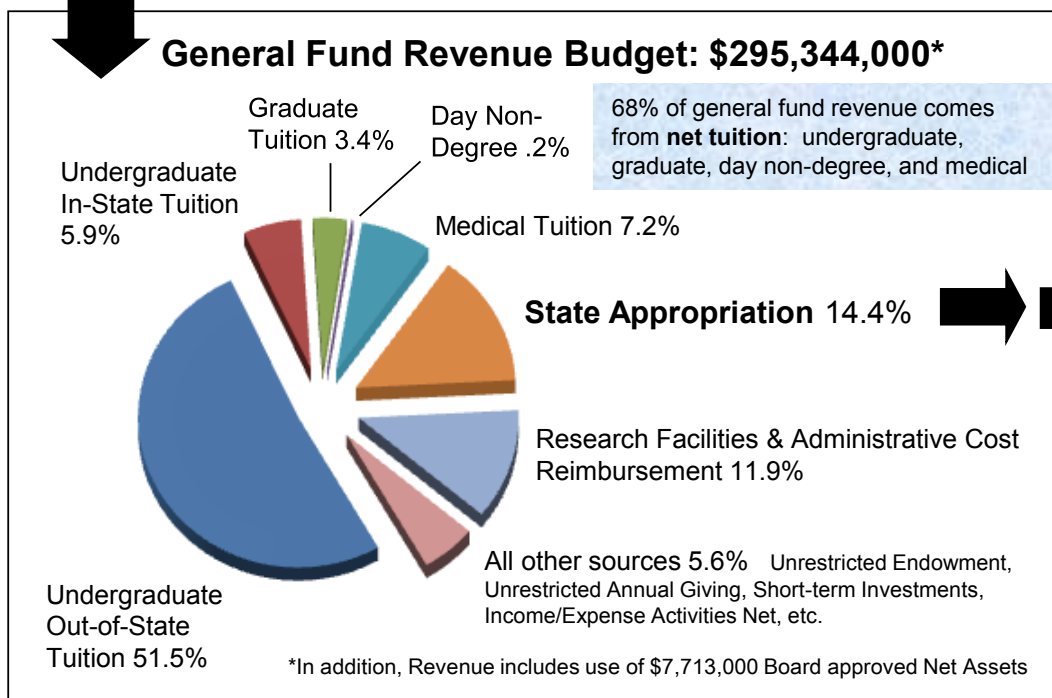
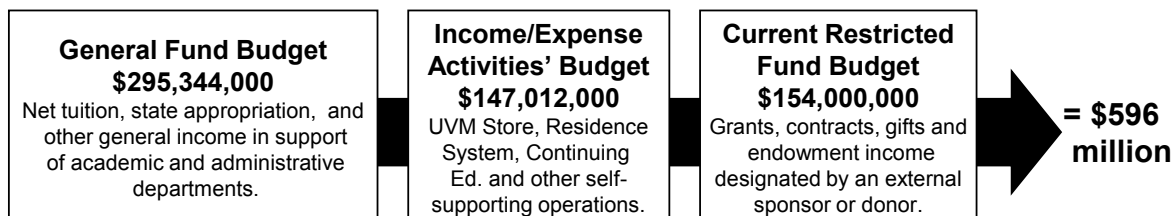
# Financial Information

# Financial Information

## University General Fund

### UVM's FY 2014 Revenue Budgets

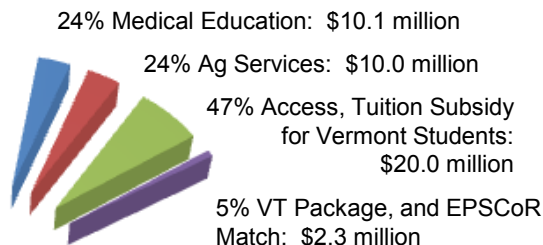
#### Total Operating Budget Revenue =



#### The State Appropriation:

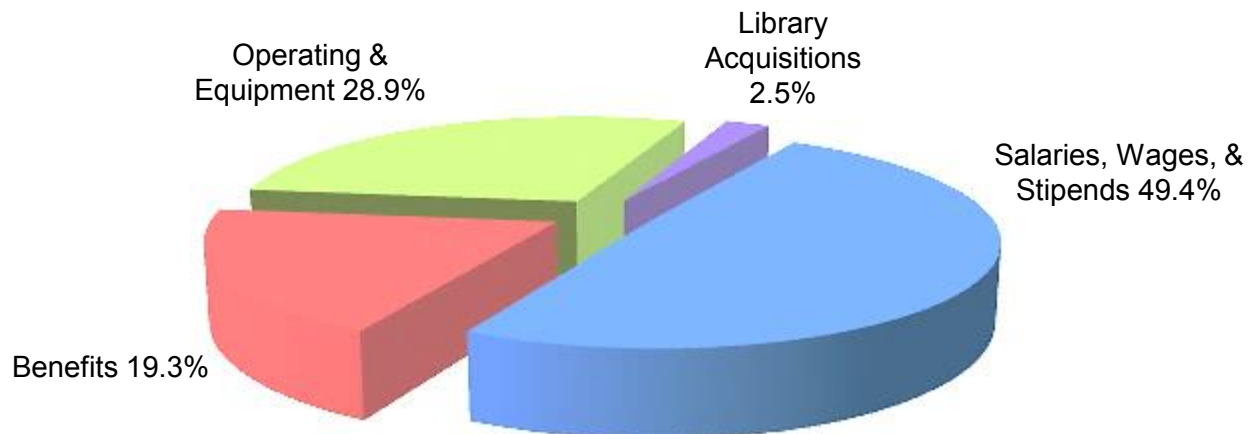
1. Supports the College of Medicine's education of medical students, undergraduates, and the medical profession;
2. Funds the teaching, research, and public service activities of UVM Extension, the Agricultural Experiment Station, and the related agricultural services; and,
3. Subsidizes tuition for Vermont students, funds community partnerships, VT Technology Council, and provides matching funds for the VT Experimental Program to Stimulate Competitive Research (EPSCoR).

**The FY 2014 State Appropriation of \$42,469,000** is 14.4% of the General Fund or 7.1% of the total current operating budget. It is dedicated to these purposes:



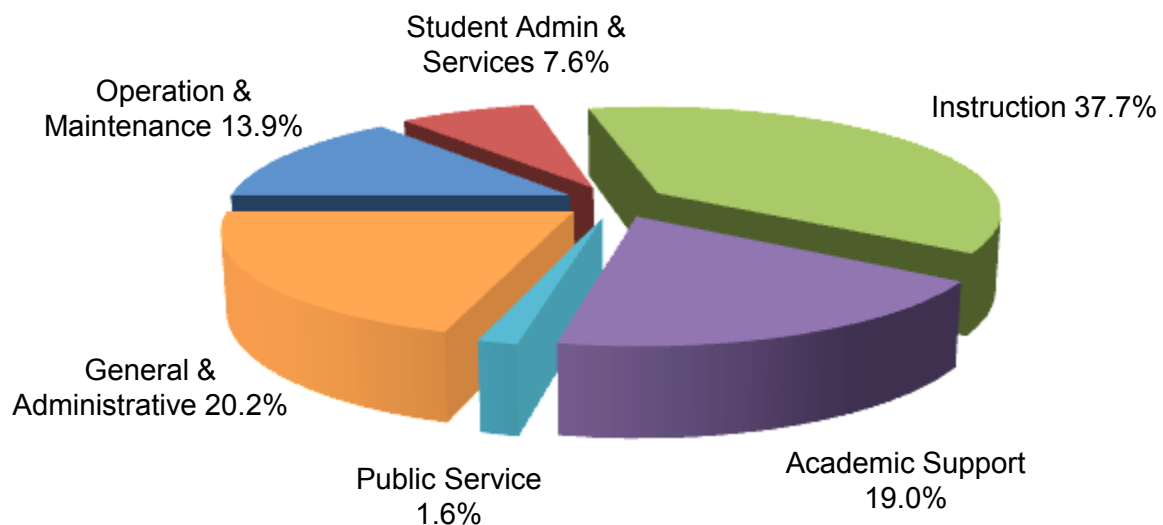
## UVM's FY 2014 Expenditure Budgets

### General Fund Expenditure Budget by Object \$303,057,000



Sixty-eight percent of UVM's General Fund expense budget funds the **compensation** of faculty, staff and students: salary, wage, stipend and benefit costs.

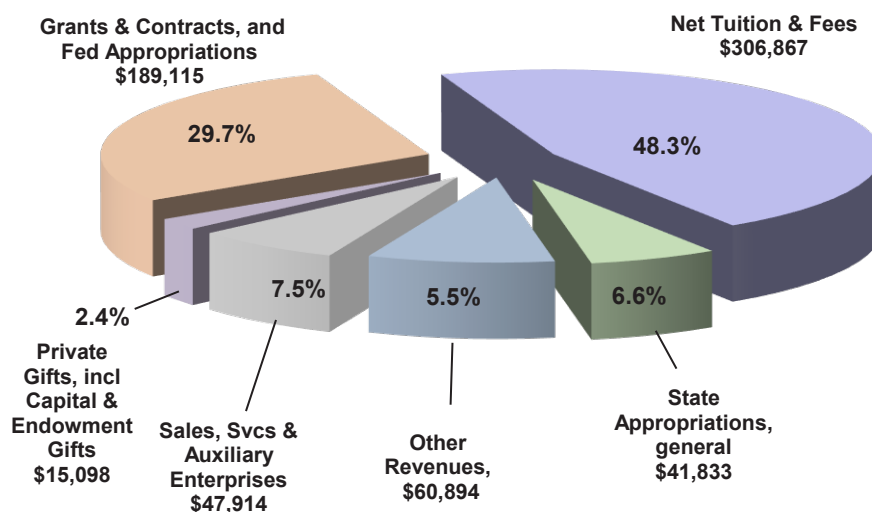
### General Fund Expenditure Budget by Function \$303,057,000



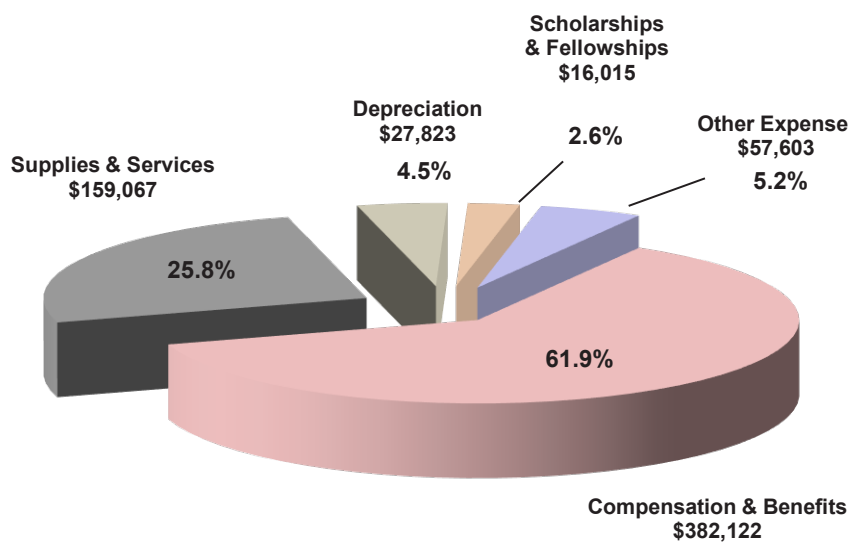
Expense budgets as approved by the Board of Trustees in May 2013.

## Total University Funds

### Total FY 2013 Revenue (in Thousand \$'s)



### Total FY 2013 Expense (in Thousand \$'s)



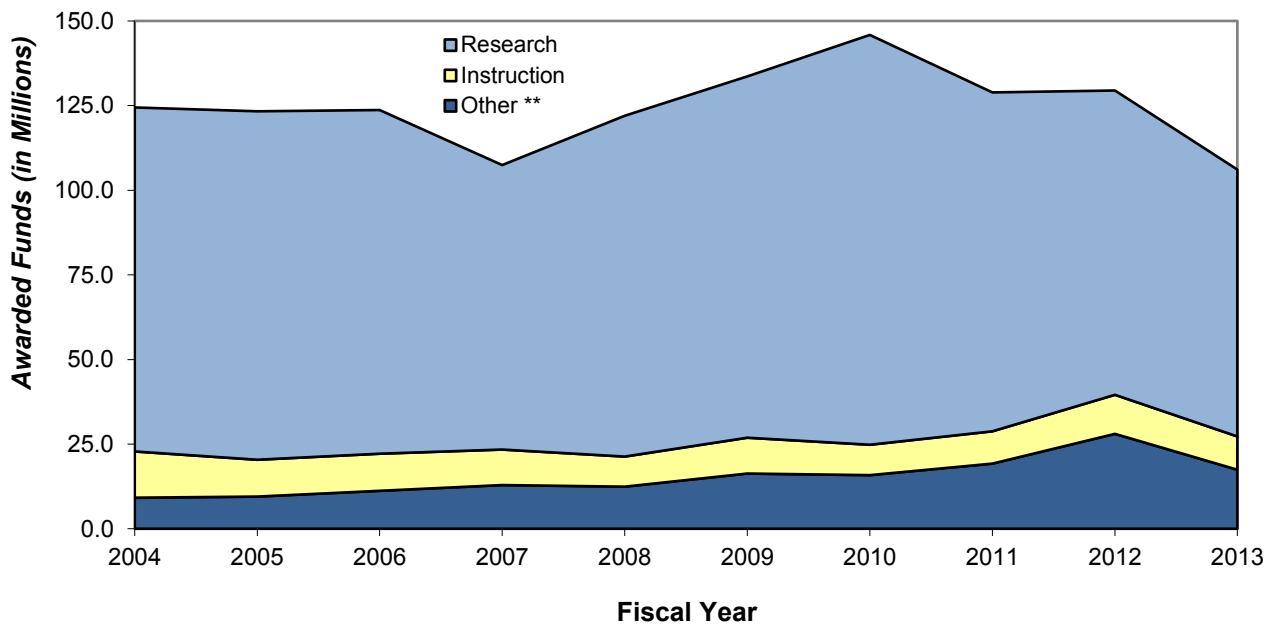
In FY 2013, scholarships and fellowships totaled \$100 million. Expense of \$16 million represents amounts paid directly to students. Remaining amount of \$84 million, representing "scholarship allowances," was applied to student accounts for tuition and fees and residential life fees and is presented as a reduction to tuition and fee revenues.

Source: FY 2013 University of Vermont Financial Report, Statement of Revenues, Expenses, and Changes in Net Position.

## Restricted Funds

### Sponsored Project Awards By Purpose \*

Sponsored Project Awards - totaling \$106,093,011 in FY 2013 - represent a significant source of total current operating revenues. Awards are funds officially set aside for payment by the sponsor. Payment may occur outside of the fiscal period in which funds are awarded.



FY	Research	Instruction	Other **	Total \$	Constant \$	# Awards
2004	101,608,152	13,682,608	9,163,550	124,454,310	124,454,310	713
2005	102,942,459	10,871,860	9,513,598	123,327,917	120,279,647	717
2006	101,586,645	10,932,352	11,219,718	123,738,715	115,676,765	736
2007	84,050,822	10,473,404	12,923,580	107,447,806	97,819,270	645
2008	100,702,258	8,854,473	12,461,556	122,018,287	105,771,992	718
2009	106,738,539	10,579,962	16,323,762	133,642,263	117,525,253	771
2010	121,058,086	9,016,188	15,802,845	145,877,119	126,947,585	755
2011	100,091,965	9,571,284	19,201,991	128,865,240	108,289,477	703
2012	89,859,671	11,550,592	28,029,550	129,439,813	106,991,703	674
2013	78,787,170	9,916,029	17,389,812	106,093,011	86,182,095	700

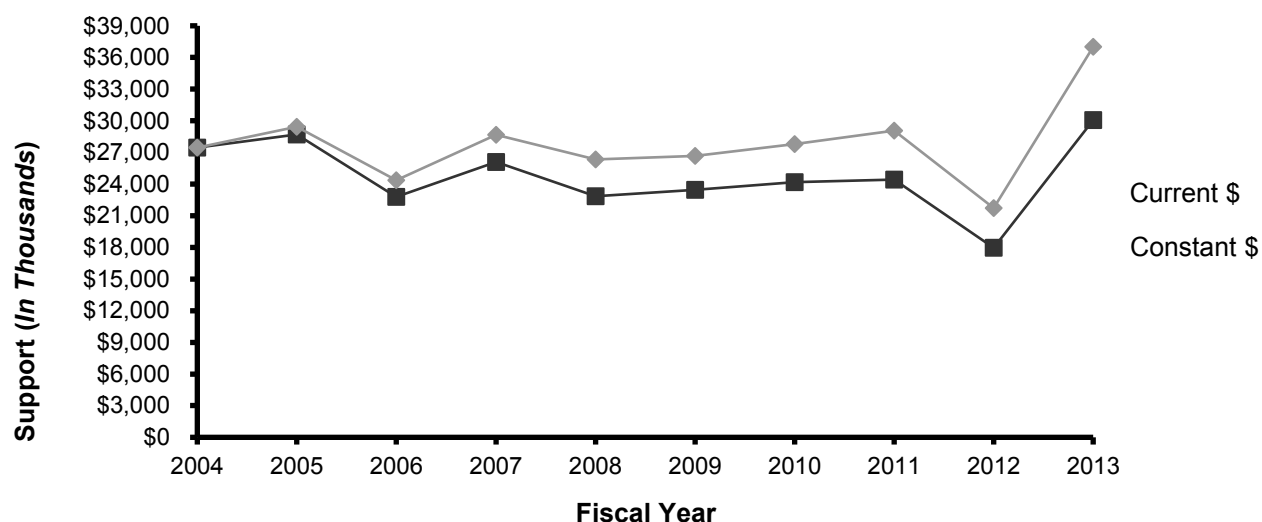
\*Includes facilities and administrative cost reimbursements. Does not include endowment commitments classified as restricted.

\*\*Includes public service, extension, general institutional, financial aid and fellowship awards.

## Ten Year Survey of Voluntary Support from All Sources

Voluntary support to UVM is comprised of gifts and grants of cash and in-kind items received in a fiscal year from alumni, parents, friends, corporations, foundations, and organizations. In FY 2013, 20,674 donors supported the University.

### Voluntary Support in Current and Constant \$



### Voluntary Support from All Sources: FY 2004-2013 (In Thousand \$'s)

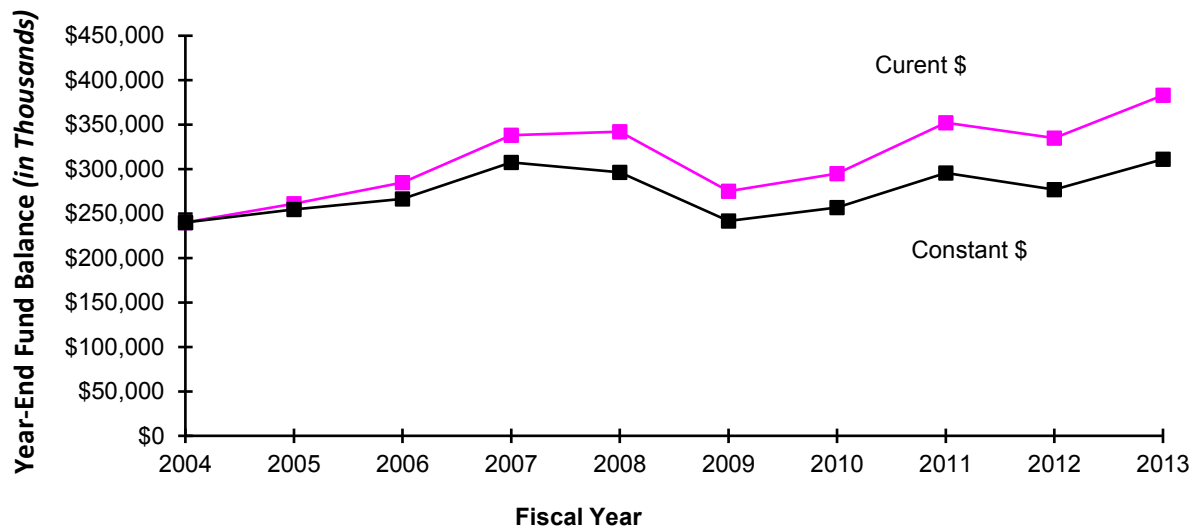
Total Voluntary Support reflects donor-directed and other gift modifications, thus figures for any given year may vary from previous reports.

	Current Operating				Endowment and Capital					TOTAL
	Unrestr	Restricted		TOTAL	Endowment		Other Capital		TOTAL	VOLUNTARY SUPPORT ALL SOURCES
FY	Private Gifts	Private Gifts	Private Grants (Via OSP)*	for Current Operating	Unrestrtd	Restricted	Loan Funds	Property	Endowment and Other Capital	
2004	2,217	10,296	8,403	20,916	179	5,160	1	1,205	6,545	27,461
2005	2,182	6,672	9,349	18,203	13	6,367	-	4,836	11,216	29,419
2006	2,379	9,961	4,778	17,118	2	6,231	1	1,013	7,247	24,365
2007	2,528	13,800	-	16,328	29	8,886	-	3,431	12,346	28,674
2008	3,354	12,293	-	15,647	13	8,558	156	1,970	10,697	26,344
2009	3,714	13,909	-	17,623	1	7,460	134	1,451	9,046	26,669
2010	2,947	15,756	-	18,703	15	6,092	373	2,604	9,084	27,787
2011	3,369	11,929	-	15,298	694	9,990	486	2,600	13,770	29,068
2012	1,968	13,487	-	15,455	-	4,133	133	2,007	6,273	21,728
2013	2,347	13,784	-	16,131	3	18,250	1	2,618	20,872	37,003

\*Beginning in FY 2007, grants from private sources are no longer reported separately. These grants are included in Restricted Current Operating totals. In FY 2012, the UVM Foundation began operations and totals reflect gifts made to the University and to the Foundation.

## Endowment and Similar Funds

Endowment funds represent gifts to the University. These gifts are to be invested prudently by the institution and the investment income is to be used for specific purposes. Although income from endowments is primarily restricted, a small portion of the University's endowment is unrestricted and supports general fund operations. Endowment funds at the end of each year are valued at the market value of investments held.



### Endowment and Similar Funds: FY 2004 - FY 2013 (In Thousand \$'s)

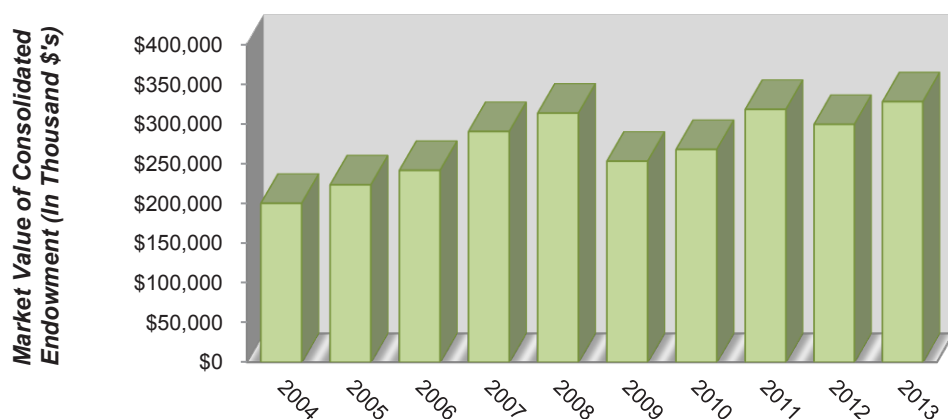
Fiscal Year	Amount of New Gifts Received	Year-End Fund Balance*	Endowment Income and Reserve Expended			
			Unrestricted	Student Aid	Other	Total
FY 2004	5,458	240,493	1,274	2,938	3,414	7,626
FY 2005	6,145	261,485	1,227	3,892	3,575	8,694
FY 2006	6,010	284,898	1,243	3,922	3,680	8,845
FY 2007	9,341	337,613	1,461	3,632	3,895	8,988
FY 2008	10,280	342,146	1,762	3,792	4,410	9,964
FY 2009	5,780	275,439	1,931	5,129	4,773	11,833
FY 2010	6,674	295,249	1,925	4,592	4,503	11,020
FY 2011	6,444	352,337	1,887	4,528	4,887	11,302
FY 2012	3,576	334,836	1,846	4,817	5,205	11,868
FY 2013	2,522	383,106	1,804	4,688	5,313	11,805

\* Fund balance is the sum value of the University's endowment and similar fund investments, endowment and similar fund cash, and unitrusts as of June 30 plus notes receivable, net of deferred giving liability.

## Consolidated Endowment Market Value & Total Return

The consolidated endowment, with its pooled funds for investment purposes, represents the largest portion of the University's total endowment. The endowment pool grows from new gifts plus its total return, less spending and investment management expenses. Over a 10 year period beginning June 30, 2004 and ending June 30, 2013, the total market value of the consolidated endowment has grown from \$200 million to \$327 million.

### Market Value of Consolidated Endowment (FY 2004 - FY 2013)



The primary objective of investment by the University is to provide a satisfactory return on investment for the support of University operations based upon the Prudent Person Principle. The specific investment objectives of the fund are to attain an average annual real total return (net of investment management fees) of at least 5% over the long term (running five year periods). Real total return is the sum of capital appreciation (or loss) and current income (dividends and interest) adjusted for inflation by the Consumer Price Index. It is recognized that the real return objective may be difficult to attain in every five year period, but should be attainable over a series of five year periods.

### UVM Investment Pool Total Return vs. Goal (FY 2004 - FY 2013)

Fiscal Year	Total Return %	CPI	UVM Goal %	Return above Goal %
FY 2004	18.3%	3.2%	7.4%	10.9%
FY 2005	11.0%	2.6%	7.7%	3.3%
FY 2006	9.9%	4.5%	7.7%	2.2%
FY 2007	20.8%	2.7%	8.0%	12.8%
FY 2008	0.4%	5.0%	8.0%	-7.6%
FY 2009	-20.0%	-1.4%	7.7%	-27.7%
FY 2010	11.6%	1.1%	7.4%	4.2%
FY 2011	23.5%	3.6%	7.2%	16.3%
FY 2012	-2.4%	1.7%	7.0%	-9.4%
FY 2013	13.4%	1.8%	6.3%	7.1%

NOTE: For this table, CPI is Urban Wage Earners and Clerical Workers - US all items

## Comparison of Endowment & Private Support - FY 2012

**Endowment per Student.** Endowment support is an important component of UVM's budget. In FY2012, the ratio of UVM's endowment market value to the number of FTE students was \$26,862 per student.

**Total Voluntary Support per Student.** UVM's total voluntary support per student FTE (which includes all gifts and grants from individuals, corporations, foundations, and organizations) was \$1,774 in FY 2012.

**Alumni Giving Participation.** 11.4% of UVM's alumni population gave a gift to the University in FY 2012.

Endowment Per Student			Total Voluntary Support per Student			Alumni Giving Participation		
1	Boston College	\$134,784	1	Boston College	\$7,704	1	Boston College	22.40%
2	William & Mary	\$82,446	2	William & Mary	\$5,512	2	William & Mary	21.80%
3	George Washington	\$61,820	3	CU-Boulder	\$4,532	3	UMASS-Amherst	15.90%
4	Syracuse	\$49,675	4	Stony Brook	\$3,868	4	UCONN	11.90%
5	Boston University	\$46,344	5	Syracuse	\$3,695	5	<b>Vermont</b>	<b>11.40%</b>
6	<b>Vermont</b>	<b>\$26,862</b>	6	George Washington	\$3,459	6	Boston University	10.00%
7	CU-Boulder	\$15,801	7	Boston University	\$3,348	7	Syracuse	9.50%
8	UCONN	\$11,425	8	<b>Vermont</b>	<b>\$1,774</b>	8	George Washington	7.70%
9	UMASS-Amherst	\$9,371	9	UCONN	\$1,527	9	SUNY Binghamton	7.20%
10	SUNY Binghamton	\$5,981	10	UMASS-Amherst	\$1,286	10	Stony Brook	6.20%
11	Stony Brook	\$5,895	11	SUNY Binghamton	\$578	11	CU-Boulder	5.30%

All data generated from Voluntary Support of Education data miner at [www.cae.org](http://www.cae.org)

# Restricted Revenue

(in Thousand \$'s)

	FY 2004	FY 2005	FY 2006	FY 2007	FY 2008 <sup>2</sup>	FY 2009	FY 2010	FY 2011	FY 2012	FY 2013
<b>Federal Funds</b>										
Experiment Station	1,508	1,620	1,678	1,622	2,075	1,154	1,568	2,313	1,865	586
Extension Service	3,311	3,271	3,380	3,017	3,487	2,688	1,616	3,965	6,780	6,846
Dept. Health/Human Services <sup>1</sup>	68,881	68,496	68,206	67,194	79,662	60,819	63,934	66,841	72,240	68,392
Department of Agriculture	3,901	5,381	5,777	7,604	6,256	7,706	8,089	9,760	4,526	3,105
Office of Education	8,820	9,013	8,920	8,766	10,324	10,363	14,775	16,209	15,739	14,360
National Science Foundation	5,497	5,492	4,874	4,278	5,990	8,010	6,628	7,006	10,019	13,532
Other Federal	5,303	5,499	6,129	6,126	8,641	11,603	10,465	12,229	13,105	12,462
<b>Subtotal</b>	97,221	98,772	98,964	98,607	116,435	102,343	107,075	118,323	124,274	119,283
<b>State Funds</b>										
Education Department	1,790	1,978	2,317	2,334	2,718	2,411	2,411	2,034	2,747	2,673
Human Services	2,793	2,824	2,953	2,431	2,301	2,290	3,019	2,840	2,374	2,474
Health Department	4,704	4,838	4,150	4,577	6,678	4,922	7,257	7,246	7,689	7,326
Environmental Conservation	323	363	589	582	475	344	454	46	475	514
Agency of Administration	0	0	0	73	184	35	0	0	0	0
Agency of Transportation	477	162	93	54	193	245	423	723	841	1,288
Other State	319	466	271	483	677	1,089	931	1,196	794	1,138
<b>Subtotal</b>	10,406	10,631	10,373	10,534	13,226	11,336	14,495	14,085	14,920	15,413
<b>Private Funds</b>										
Gifts, Grants & Contracts	27,932	27,453	27,959	26,448	33,935	32,441	37,142	32,069	29,020	27,119
Medical "Practice"	11,850	15,140	15,594	17,240	17,058	16,188	17,820	20,616	29,996	57,321
<b>Subtotal</b>	39,782	42,593	43,553	43,688	50,993	48,629	54,962	52,685	59,016	84,440
<b>Total</b>	147,409	151,996	152,890	152,829	180,654	162,308	176,532	185,093	198,210	219,136

Notes: All numbers include "Facilities and Administration Cost Reimbursements" transferred to General Funds. This table does not include Endowment Income.

<sup>1</sup> Dept. of Health and Human Services previously Public Health & National Institutes of Health.

<sup>2</sup> FY 2008 figures restated to reflect actuals by category.

## State Support

### UVM State Appropriation History

(in Thousand \$'s)

FISCAL YEAR	ORIGINAL APPROPRIATION	% CHANGE	APPROPRIATION RECEIVED	% CHANGE	COMPARATIVE GROWTH INDEX		
					ORIGINAL APPROPRIATION	APPROPRIATION RECEIVED	CPI
1995	\$25,742	-2.0%	\$25,742	0.0%	100.0%	100.0%	100.0%
1996	\$26,742	3.9%	\$26,346	2.3%	103.9%	102.3%	102.8%
1997	\$26,392	-1.3%	\$26,392	0.2%	102.5%	102.5%	105.1%
1998	\$27,320	3.5%	\$27,320	3.5%	106.1%	106.1%	106.9%
1999	\$28,253	3.4%	\$28,253	3.4%	109.8%	109.8%	109.0%
2000	\$30,331	7.4%	\$30,331	7.4%	115.5%	117.8%	113.1%
2001	\$32,447	7.0%	\$32,447	7.0%	123.5%	126.0%	116.8%
2002 <sup>1</sup>	\$35,059	8.1%	\$34,182	5.3%	133.5%	132.8%	118.0%
2003	\$36,198	3.2%	\$36,198	5.9%	137.8%	140.6%	120.5%
2004	\$36,922	2.0%	\$36,922	2.0%	140.6%	143.4%	124.4%
2005	\$37,938	2.8%	\$37,938	2.8%	144.4%	147.4%	127.6%
2006	\$39,271	3.5%	\$39,271	3.5%	149.5%	152.6%	133.1%
2007	\$40,842	4.0%	\$40,842	4.0%	155.5%	158.7%	136.7%
2008	\$42,272	3.5%	\$42,272	3.5%	160.9%	164.2%	143.5%
2009	\$43,329	2.5%	\$40,747	-3.6%	165.0%	158.3%	141.5%
2010	\$40,747	-6.0%	\$40,747	0.0%	155.1%	158.3%	143.0%
2011	\$40,747	0.0%	\$40,747	0.0%	155.1%	158.3%	148.1%
2012	\$40,747	0.0%	\$40,747	0.0%	155.1%	158.3%	150.5%
2013	\$40,747	0.0%	\$40,747	0.0%	155.1%	158.3%	153.2%
2014 <sup>5</sup>	\$42,469	4.2%	\$42,469	4.2%	161.7%	165.0%	156.2%

<sup>1</sup> Beginning in FY 2002 appropriation includes funding for EPSCoR state match. FY 2002 amount was \$340,000.

<sup>2</sup> In addition, UVM was appropriated \$1.0 million of one-time funds; and \$1.67 million for "Next Generation" scholarship support.

<sup>3</sup> In addition, UVM was appropriated funding for "Next Generation" scholarship support: \$1.57m in FY 2008, \$.82m in FY 2009, \$.5m in FY 2010, \$.5m in FY 2011, \$.5m in FY 2012; \$.5m in FY 2013.

<sup>4</sup> In addition, UVM was appropriated one-time funding of \$5,175,298 in FY 2010; \$2,587,646 in FY 2011.

<sup>5</sup> FY 2014 CPI and Appropriation Received are estimates as of 10/31/13.

<sup>6</sup> FY 2014 appropriation increase of \$1.722m to be used only for student financial aid to Vermont students.

# State Appropriation Requests and Actions: FY 2008 - FY 2014

UVM communicates its funding needs to the State of Vermont through its legislative request, or "UVM Request," as shown below. The governor then makes a recommendation based on UVM's request, which is sent to the legislature for action.

FY 2008 STATE APPROPRIATION			Governor's			Actual		
	UVM Request	% Incr. <sup>1</sup>	Recommend.	% Incr. <sup>1</sup>	Appropriation	% Incr. <sup>1</sup>		
FY 2007 Appropriation	\$40,842,201		\$40,842,201		\$40,842,201			
Current Service Level	\$2,042,110	5.0%	\$1,184,424	2.90%	\$1,429,643	3.50%		
Supplemental Request	\$1,000,000	2.4%	\$0	0.00%	\$0	0.00%		
<b>Total Appropriation</b>	<b>\$43,884,311</b>	<b>7.4%</b>	<b>\$42,026,625</b>	<b>2.90%</b>	<b>\$42,271,844</b>	<b>3.50%</b>		

*In addition, \$1,566,666 appropriated for "Next Generation" scholarship funding.*

FY 2009 STATE APPROPRIATION			Governor's			Actual		
	UVM Request	% Incr. <sup>1</sup>	Recommend.	% Incr. <sup>1</sup>	Appropriation	% Incr. <sup>1</sup>		
FY 2008 Appropriation	\$42,271,844		\$42,271,844		\$42,271,844			
Current Service Level	\$3,381,748	8.0%	\$1,056,796	2.50%	\$1,056,796 <sup>3</sup>	2.50%		
Supplemental Request	\$2,000,000	4.7%	\$0		\$0			
<b>Total Appropriation</b>	<b>\$47,653,592</b>		<b>\$43,328,640</b>		<b>\$43,328,640</b>			
Less Rescission					(\$2,582,011)	-5.96%		
<b>Revised Appropriation</b>					<b>\$40,746,629</b>	<b>-3.61%</b>		

*In addition, \$819,166 appropriated for "Next Generation" scholarship funding (post rescission).*

FY 2010 STATE APPROPRIATION			Governor's			Actual		
	UVM Request	% Incr. <sup>1</sup>	Recommend.	% Incr. <sup>1</sup>	Appropriation	% Incr. <sup>1</sup>		
FY 2009 Appropriation	\$43,328,640		\$43,328,640		\$43,328,640			
Current Service Level	\$4,866,412	11.2%	\$4,866,412	11.23%	(\$2,582,011)	-5.96%		
One-time funding					\$5,175,298 <sup>2</sup>			
<b>Total Appropriation</b>	<b>\$48,195,052</b>	<b>11.2%</b>	<b>\$48,195,052</b>	<b>11.23%</b>	<b>\$45,921,927</b>	<b>5.99%</b>		

*In addition, \$500,000 appropriated for "Next Generation" scholarship funding.*

FY 2011 STATE APPROPRIATION			Governor's			Actual		
	UVM Request	% Incr. <sup>1</sup>	Recommend.	% Incr. <sup>1</sup>	Appropriation	% Incr. <sup>1</sup>		
FY 2010 Appropriation	\$40,746,629		\$43,334,279		\$40,746,633			
Current Service Level		0.0%		0.00%	\$0	0.00%		
One-time funding					\$2,587,646 <sup>2</sup>			
<b>Total Appropriation</b>	<b>\$40,746,629</b>	<b>0.0%</b>	<b>\$43,334,279</b>	<b>0.00%</b>	<b>\$43,334,279</b>	<b>6.35%</b>		

*In addition, \$500,000 appropriated for "Next Generation" scholarship funding, and \$118,750 for technology commercialization activities.*

FY 2012 STATE APPROPRIATION			Governor's			Actual		
	UVM Request	% Incr. <sup>1</sup>	Recommend.	% Incr. <sup>1</sup>	Appropriation	% Incr. <sup>1</sup>		
FY 2011 Appropriation	\$40,746,633		\$40,746,633		\$40,746,633			
Current Service Level		0.0%		0.00%	\$0	0.00%		
<b>Total Appropriation</b>	<b>\$40,746,633</b>	<b>0.0%</b>	<b>\$40,746,633</b>	<b>0.00%</b>	<b>\$40,746,633</b>	<b>0.00%</b>		

*In addition, \$500,000 appropriated for "Next Generation" scholarship funding, and \$100,000 for technology commercialization activities.*

FY 2013 STATE APPROPRIATION			Governor's			Actual		
	UVM Request	% Incr. <sup>1</sup>	Recommend.	% Incr. <sup>1</sup>	Appropriation	% Incr. <sup>1</sup>		
FY 2012 Appropriation	\$40,746,633		\$40,746,633		\$40,746,633			
Current Service Level		0.0%		0.00%	\$0	0.00%		
<b>Total Appropriation</b>	<b>\$40,746,633</b>	<b>0.0%</b>	<b>\$40,746,633</b>	<b>0.00%</b>	<b>\$40,746,633</b>	<b>0.00%</b>		

*In addition, \$500,000 appropriated for "Next Generation" scholarship funding, and \$100,000 for technology commercialization activities.*

FY 2014 STATE APPROPRIATION			Governor's			Actual		
	UVM Request	% Incr. <sup>1</sup>	Recommend.	% Incr. <sup>1</sup>	Appropriation	% Incr. <sup>1</sup>		
FY 2013 Appropriation	\$40,746,633		\$40,746,633		\$40,746,633			
Current Service Level		0.0%		0.00%	\$0	0.00%		
Additional funding for VT student aid					\$1,722,399			
<b>Total Appropriation</b>	<b>\$40,746,633</b>	<b>0.0%</b>	<b>\$40,746,633</b>	<b>0.00%</b>	<b>\$42,469,032</b>	<b>4.23%</b>		

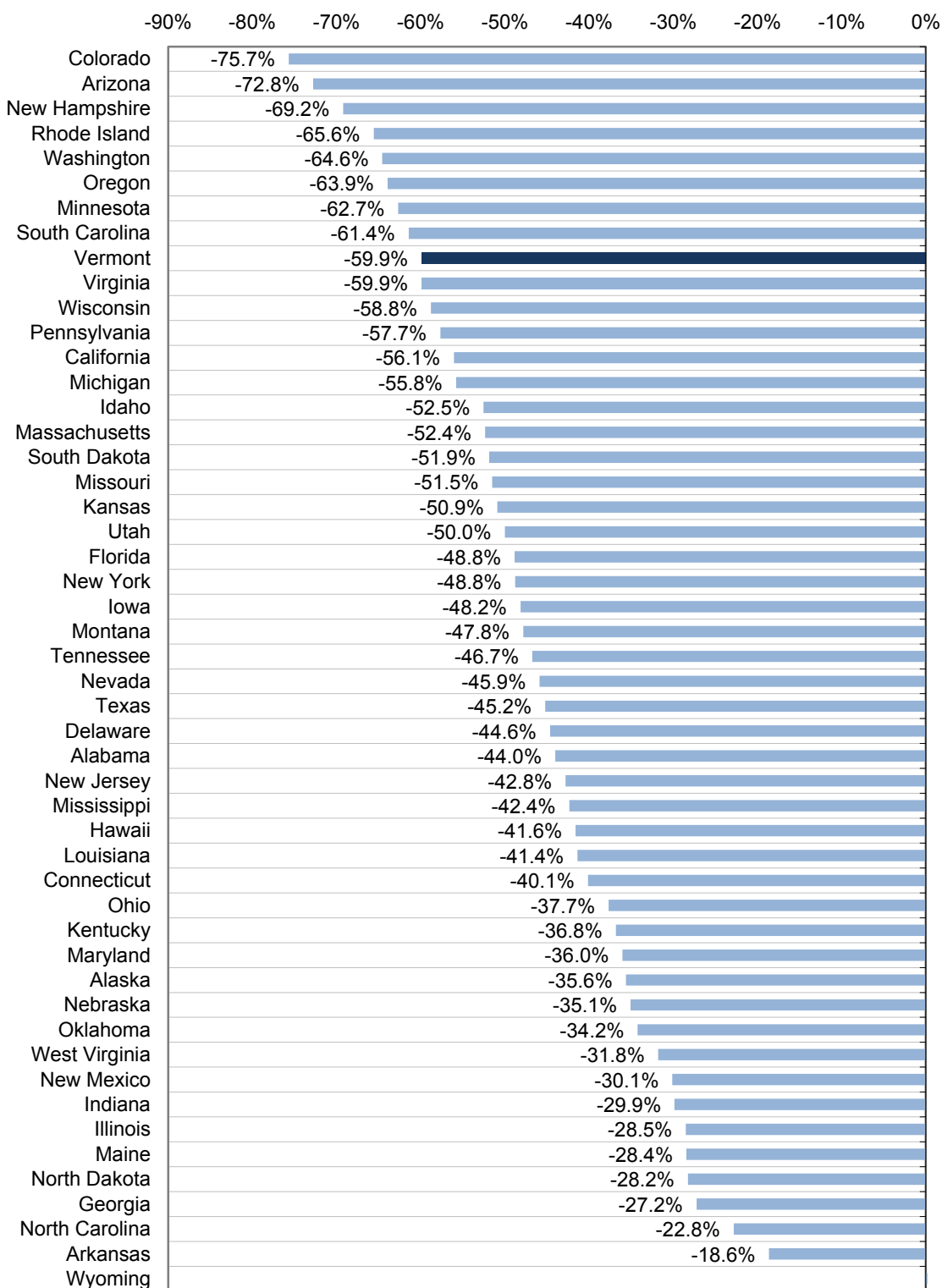
<sup>1</sup> Percent change over prior year appropriation amount

<sup>2</sup> One-time funds

<sup>3</sup> Contingent appropriation funding

## Change in State Appropriation of Tax Funds for Higher Education per \$1,000 Personal Income Between FY 1979 and FY 2013

% Change in Appropriations per \$1,000 in Personal Income



Source: Postsecondary Education OPPORTUNITY web site [www.postsecondary.org](http://www.postsecondary.org)

## Analysis of State Funds for Higher Education

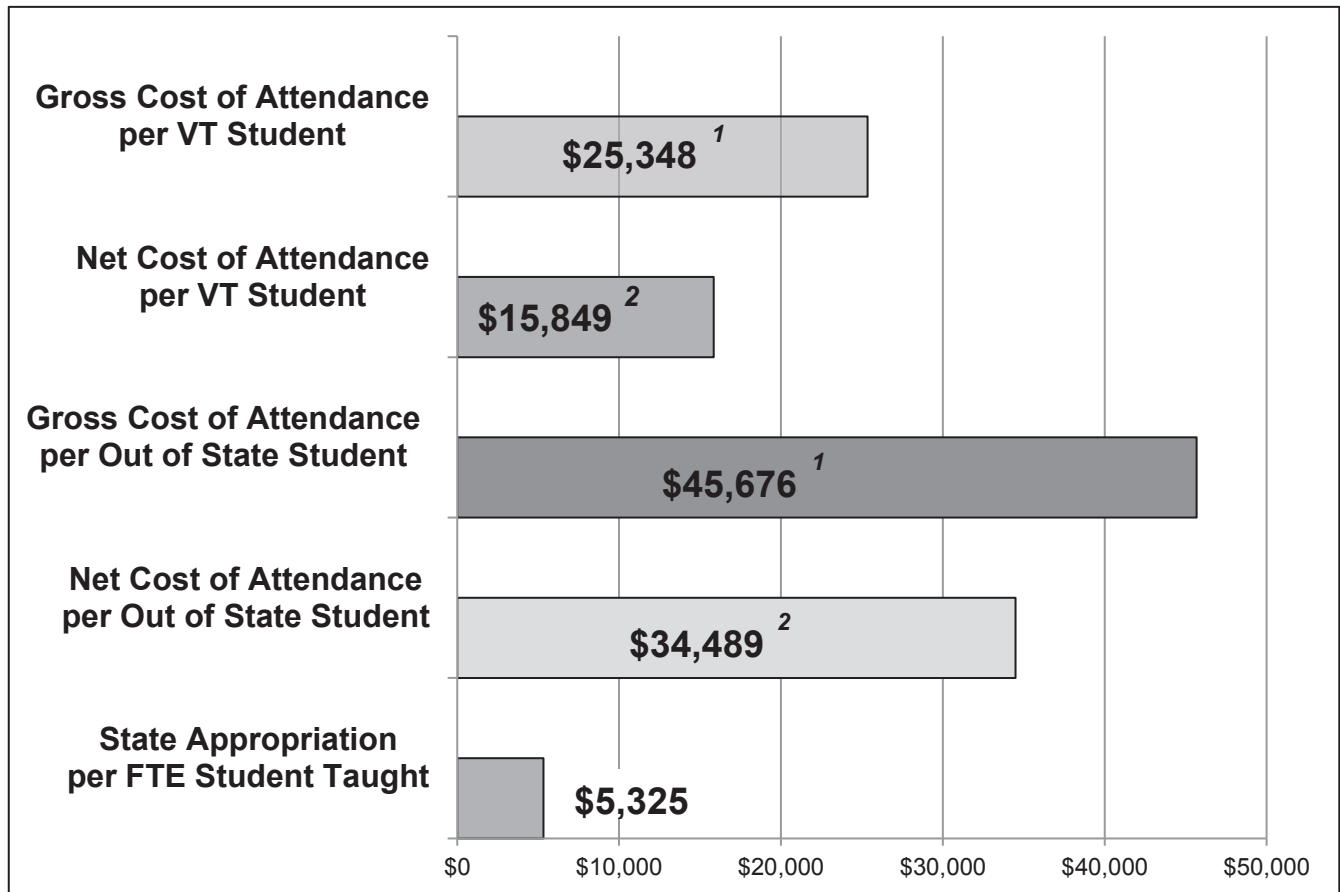
	FY 2013 Appropriation <sup>1</sup>		Per Capita <sup>2</sup>		Per \$1,000 Personal Income <sup>3</sup>	
State	Amount	Rank	Amount	Rank	Amount	Rank
Alabama	1,405,063,916	16	291.38	11	8.19	11
Alaska	365,195,297	41	499.28	2	10.77	4
Arizona	840,320,500	29	128.23	48	3.57	44
Arkansas	906,500,781	28	307.38	9	8.88	7
California	8,843,276,000	1	232.46	27	5.21	29
Colorado	640,628,978	35	123.49	49	2.74	49
Connecticut	957,256,412	24	266.62	16	4.54	35
Delaware	216,492,700	45	236.06	26	5.60	25
Florida	3,341,628,971	6	172.98	39	4.32	40
Georgia	2,757,055,556	7	277.93	12	7.59	14
Hawaii	513,516,613	38	368.82	6	8.39	9
Idaho	360,070,800	42	225.65	29	6.73	15
Illinois	3,566,692,200	5	277.02	13	6.18	20
Indiana	1,555,282,625	14	237.91	25	6.44	18
Iowa	787,419,692	31	256.14	20	6.06	21
Kansas	759,215,686	32	263.08	17	6.37	19
Kentucky	1,178,977,000	20	269.15	15	7.68	12
Louisiana	1,175,660,258	21	255.47	21	6.48	17
Maine	264,064,554	44	198.67	37	5.03	32
Maryland	1,612,475,870	12	274.02	14	5.31	27
Massachusetts	1,049,106,956	22	157.85	42	2.91	48
Michigan	1,596,324,500	13	161.52	41	4.33	39
Minnesota	1,285,247,000	18	238.93	24	5.22	28
Mississippi	924,952,654	27	309.87	8	9.41	6
Missouri	931,239,665	26	154.64	44	3.99	42
Montana	202,187,817	46	201.15	34	5.40	26
Nebraska	659,571,367	34	355.46	7	8.20	10
Nevada	472,368,017	39	171.21	40	4.60	34
New Hampshire	85,622,352	50	64.83	50	1.38	50
New Jersey	1,888,439,000	9	213.03	31	3.99	41
New Mexico	799,405,505	30	383.31	5	10.93	3
New York	4,989,658,488	3	254.96	22	4.93	33
North Carolina	4,092,304,288	4	419.63	4	11.44	2
North Dakota	343,805,783	43	491.41	3	9.87	5
Ohio	2,039,964,448	8	176.71	38	4.50	36
Oklahoma	981,069,415	23	257.17	19	6.64	16
Oregon	582,208,397	36	149.31	45	3.86	43
Pennsylvania	1,792,655,000	10	140.45	47	3.24	47
Rhode Island	164,147,170	48	156.29	43	3.49	45
South Carolina	942,770,165	25	199.58	35	5.86	24
South Dakota	190,251,431	47	228.30	28	5.12	30
Tennessee	1,455,168,883	15	225.39	30	6.00	23
Texas	6,425,707,479	2	246.58	23	6.01	22
Utah	748,759,000	33	262.24	18	7.62	13
<b>Vermont</b>	<b>87,996,319</b>	<b>49</b>	<b>140.57</b>	<b>46</b>	<b>3.26</b>	<b>46</b>
Virginia	1,703,083,307	11	208.05	32	4.45	37
Washington	1,372,858,000	17	199.05	36	4.40	38
West Virginia	545,760,686	37	294.15	10	8.51	8
Wisconsin	1,182,780,084	19	206.55	33	5.09	31
Wyoming	384,199,290	40	666.54	1	13.68	1
Total	\$71,966,406,875					
Median	\$937,004,915		\$236.99		\$5.50	

<sup>1</sup> From the FY 2013 Grapevine Survey, Center for Study of Education Policy, Illinois State University. Includes State plus Federal stimulus and Government Service Funds.

<sup>2</sup> Based on July 2012 population estimates retrieved from the U.S. Census Bureau, <http://www.census.gov/popest/data/state/totals/2012/index.html>.

<sup>3</sup> Based on personal income data for the 3rd quarter of 2012, retrieved from the Bureau of Economic Analysis, U.S. Department of Commerce, [http://www.bea.gov/itable/index\\_regional.cfm](http://www.bea.gov/itable/index_regional.cfm).

## FY 2013 Gross & Net Cost of Attendance Per Student



<sup>1</sup> Published cost of attendance: Tuition, Fees, and Room & Board.

<sup>2</sup> Gross cost of attendance less average student financial aid received.

# Capital Appropriation

## State Capital Appropriation History

Year Authorized	Project	State Capital Appropriation	University Funds	Gifts & Grants	Total Costs
1993	Library Storage, Waterman Archives	3,000,000			3,000,000
	Handicapped Accessibility	<u>250,000</u>			<u>250,000</u>
	<b>1993 Total</b>	<b>3,250,000</b>			<b>3,250,000</b>
1994	Old Mill and Lafayette	4,000,000	3,010,000	4,522,000	11,532,000
	Pomeroy Hall and Allen House	2,200,000			2,200,000
	Centennial Field Baseball Facility	<u>800,000</u>			<u>800,000</u>
	<b>1994 Total</b>	<b>7,000,000</b>	<b>3,010,000</b>	<b>4,522,000</b>	<b>14,532,000</b>
1995	Pomeroy Hall & Allen House	1,000,000	224,000	257,000	1,481,000
	Architectural Barrier Removal	<u>250,000</u>			<u>250,000</u>
	<b>1995 Total</b>	<b>1,250,000</b>	<b>224,000</b>	<b>257,000</b>	<b>1,731,000</b>
1996	UVM Heating Plant	1,500,000	1,000,000		2,500,000
1997	UVM Heating Plant	1,000,000	500,000		1,500,000
1998	Waterman Renovation	3,000,000	1,161,574		4,161,574
	Fleming Museum Air Conditioning	<u>50,000</u>	<u>1,000</u>		<u>51,000</u>
	<b>1998 Total</b>	<b>3,050,000</b>	<b>1,162,574</b>		<b>4,212,574</b>
1999	Delehanty Geology Building	1,450,000			1,450,000
	Centennial Field Baseball Facility	<u>175,000</u>	<u>125,000</u>		<u>300,000</u>
	<b>1999 Total</b>	<b>1,625,000</b>	<b>125,000</b>		<b>1,750,000</b>
2000	Delehanty Geology Building	3,165,000		100,000	3,265,000
2001	Given Renovations	887,500			887,500
	Hills Renovations/Replacement Study	62,500	137,500		200,000
	Morgan Horse Barn - Fire Protection	<u>50,000</u>	<u>50,000</u>	<u>50,000</u>	<u>150,000</u>
	<b>2001 Total</b>	<b>1,000,000</b>	<b>187,500</b>	<b>50,000</b>	<b>1,237,500</b>
2002	Given Renovations	2,850,000			2,850,000
	Hills Renovations/Replacement Study	<u>250,000</u>			<u>250,000</u>
	<b>2002 Total</b>	<b>3,100,000</b>			<b>3,100,000</b>
2003	Hills Renovations/Replacement	1,000,000			1,000,000
2004	Plant Sciences Building (Formerly Hills Renovations/Replacement Study)	2,600,000			2,600,000
2005	Plant Sciences Building	1,700,000			1,700,000
2006	Plant Sciences Building	1,800,000			1,800,000
2007	Plant Sciences Building	1,600,000			1,600,000
2008	Plant Sciences Building (Jeffords Hall)	1,000,000			1,000,000
	Deferred Maintenance	<u>600,000</u>			<u>600,000</u>
	<b>2008 Total</b>	<b>1,600,000</b>			<b>1,600,000</b>
2009	McAuley Hall Renovations/Residence	2,000,000			2,000,000
2010	Plant Improvements	1,900,000			1,900,000
	CRF/DOH Joint Project	<u>100,000</u>			<u>100,000</u>
	<b>2010 Total</b>	<b>2,000,000</b>			<b>2,000,000</b>
2011	Deferred Maintenance	1,800,000			1,800,000
2012	None	0			0
2013	Deferred Maintenance	1,400,000			1,400,000

NOTE: Some prior year data has been updated to reflect actual changes.

# Financial Position

## Summary of UVM Statement of Net Position (in Thousand \$'s)

	FY 2013	FY 2012
<b>ASSETS</b>		
Current Assets		
Cash and cash equivalents	\$72,452	\$71,649
Operating investments	114,498	113,083
Investments for capital activities	22,416	17,525
Accounts, loans, notes & pledges receivable, net	35,195	34,793
Inventories, prepaid expenses & deferred charges	10,980	10,212
<i>Total Current Assets</i>	<u>255,541</u>	<u>247,262</u>
Non-Current Assets		
Endowment, annuity & life income cash, cash equiv & investments	350,808	308,198
Student loans, notes, pledges receivable, net	26,410	27,122
Prepaid expenses and deferred charges, non-current	7,800	5,818
Deposits with trustees	14,928	15,210
<u>Capital Assets</u>		
Land	27,709	25,667
Buildings	745,616	732,887
Equipment, Software, Other	158,535	153,172
Less: accumulated depreciation	(395,488)	(367,715)
<i>Net Capital Assets</i>	<u>536,372</u>	<u>544,011</u>
<i>Total Non-Current Assets</i>	<u>936,318</u>	<u>900,359</u>
<b>TOTAL ASSETS</b>	<b>\$1,191,859</b>	<b>\$1,147,621</b>
<b>LIABILITIES AND NET ASSETS</b>		
Current Liabilities		
Accounts payable, accrued liabilities, current	69,651	54,571
Bonds payable, current	13,270	16,363
Deferred revenue, deposits	8,004	7,403
<i>Total Current Liabilities</i>	<u>90,925</u>	<u>78,337</u>
Non-Current Liabilities		
Bonds and notes payable	13,058	13,300
Accrued liabilities	127,550	109,178
Post retirement benefits	459,710	465,281
<i>Total Non-Current Liabilities</i>	<u>600,318</u>	<u>587,759</u>
<b>TOTAL LIABILITIES</b>	<b>\$691,243</b>	<b>\$666,096</b>
<b>Net Position</b>		
Invested in capital assets net of related debt	71,226	72,272
Restricted:		
Non-expendable	99,021	97,166
Expendable	284,430	260,777
Unrestricted	45,939	51,310
<b>TOTAL NET POSITION</b>	<b>\$500,616</b>	<b>\$481,525</b>

Source: FY 2013 UVM Financial Report

**Summary of Bonds and Notes Payable**

(in thousands \$'s)

June 30, 2013

Bond Issue	Beginning Balance	New Debt	Decreases	Current	Non-Current Balance
Heat System Bond (1),(2)					
1980 Issue	1,227		149	153	925
General Obligation Bonds					
Series 1998	25,157		25,157	0	0
Series 2002	25,436		25,436	0	0
Series 2005 (3)	155,213		828	1,003	153,382
Series 2007 (4)	158,463		732	1,752	155,979
Series 2009 (5)	78,913		1,539	1,568	75,806
Series 2010 A	9,000		0	0	9,000
Series 2010 B (8)	18,945		990	40	17,915
Series 2012A (7)		49,949	0	3,402	46,547
Capital Leases	330		88	86	156
<b>TOTAL</b>	<b>472,684</b>	<b>49,949</b>	<b>54,919</b>	<b>8,004</b>	<b>459,710</b>

(1) Revenues from these facilities are pledged as collateral under debt agreements.

(2) The assets are pledged as collateral under debt agreements.

(3) This balance shown net of bond premium of \$3,455.

(4) This balance shown includes bond premium of \$3,996.

(5) This balance shown includes bond discount of \$1,090.

(6) This balance shown includes bond premium of \$605.

(7) This balance shown net of bond discount of \$326.

**DEBT RATIOS FY 2009 - FY 2013**

(in thousands \$'s)

The Viability Ratio is a ratio of expendable net assets to long term debt and reflects the University's ability to pay off all debt with liquid and expendable net assets. The policy limit is 0.8. The Debt Burden Ratio is a ratio of debt service to operations that reflects the University's ability to repay outstanding debt. The policy limit is 6.0%.

**VIABILITY RATIO:**

Source

**Formula: (Unrestricted Net Assets + Expendable Restricted Net Assets) / Aggregate Debt**

	FY 2009	FY 2010	FY 2011	FY 2012	FY 2013	
Unrestricted Net Assets	46,560	53,613	57,672	51,310	43,939	A
Expendable Restricted Net Asset	186,187	248,903	283,481	260,777	286,430	A
<b>Total Expendable Net Assets</b>	<b>232,747</b>	<b>302,516</b>	<b>341,153</b>	<b>312,087</b>	<b>330,369</b>	
Long-Term Liabilities - Current	5,906	8,115	7,129	7,403	8,004	A
Long-Term Liabilities - Noncurrer	476,997	479,430	472,525	465,281	459,710	A
<b>Total Long-Term Debt</b>	<b>482,903</b>	<b>487,545</b>	<b>479,654</b>	<b>472,684</b>	<b>467,714</b>	
<b>Viability Ratio</b>	<b>0.48</b>	<b>0.62</b>	<b>0.71</b>	<b>0.66</b>	<b>0.71</b>	

**DEBT BURDEN RATIO:****Formula: Annual Debt Service / Total Operating Expense + Annual Debt Service**

	FY 2009	FY 2010	FY 2011	FY 2012	FY 2013	
Interest Due	(18,847)	(22,351)	(22,909)	(22,502)	(22,262)	B
Principal Due	(5,652)	(5,756)	(7,888)	(6,903)	(7,177)	B
<b>Total Debt Service</b>	<b>(24,499)</b>	<b>(28,107)</b>	<b>(30,797)</b>	<b>(29,405)</b>	<b>(29,439)</b>	
Operating Expenses	(561,055)	(564,465)	(587,427)	(581,087)	(585,027)	C
Less Depreciation Expenses	27,081	27,435	28,070	28,721	27,823	C
Interest Due	(18,847)	(22,351)	(22,909)	(22,502)	(22,262)	B
Principal Due	(5,652)	(5,756)	(7,888)	(6,903)	(7,177)	B
<b>Total Expenses</b>	<b>(558,473)</b>	<b>(565,137)</b>	<b>(590,154)</b>	<b>(581,771)</b>	<b>(586,643)</b>	
<b>Debt Burden Ratio</b>	<b>4.39%</b>	<b>4.97%</b>	<b>5.22%</b>	<b>5.05%</b>	<b>5.02%</b>	

A: UVM Financial Report-Statement of Net Assets B: UVM Financial Report-Financial Statement Note E

C: UVM Financial Report-Statement of Revenues, Expenses and Changes in Net Assets

## UVM Real Estate Holdings and Facilities

<b>LAND HOLDINGS*</b>	<b>FY 2004</b>	<b>FY 2014</b>
<b>Main Campus</b>	<b>(Acres)</b>	<b>(Acres)</b>
Primary Academic Core		
Central District (including 3.3 acre Redstone Quarry Natural Area)	106	106
Centennial District (including 69.2 acre Centennial Woods Natural Area)	203	206
Redstone District	52	52
Athletic District	40	37
University Heights District	37	40
Trinity District	21	21
South Campus (incl. Farm, Research Property and 50 acre East Woods Natural Area)	495	495
<b>Off Campus</b>		
Farm Property (Includes Morgan Horse Farm)	214	214
Research Property (includes Jericho Rsch Forest, Proctor-Maple Rsch Cmplx & Co	1,157	1,001
Natural Areas (excludes 122.5 acres of Natural Areas on Main Campus)	1,904	1,942
Other Property: Bolton, Fort Ethan Allen	38	38
Gift/Investment Property - In State	12	12
Gift/Investment Property - Out of State	0	0
<b>Totals (Acres)</b>	<b>4,279</b>	<b>4,164</b>

<b>FACILITIES (Facilities Owned By UVM)**</b>	<b>FY 2002</b>	<b>FY 2012</b>
<b>(Room Type Categories(1) - (each category includes "service" rooms))</b>	<b>(Square Ftg)</b>	<b>(Square Ftg)</b>
Classrooms	128,418	154,180
Laboratories	406,936	453,240
Offices/Conference Rooms	509,066	637,811
Study Areas/Libraries	187,077	170,705
Special Use/General Use (2)	596,764	394,325
Athletics	NA	204,550
Support (3)	163,193	401,349
Health Care	4,119	9,159
Residential	638,040	872,708
UVM Facilities Utilized by Non-UVM Agencies (4)	178,160	249,544
Areas under Renovation	16,642	33,241
Inactive Space (5)	12,023	20,776
Unusable Space (6)	8,200	23,955
<b>Total Net Assignable Square Footage (7)</b>	<b>2,848,638</b>	<b>3,601,589</b>
<b>Total Net Unassignable Square Footage (8)</b>	<b>924,503</b>	<b>1,362,770</b>
<b>Total Net Assignable + Net Unassignable Sqftg</b>	<b>3,773,141</b>	<b>4,964,359</b>
<b>Total Gross Square Footage (9)</b>	<b>4,454,447</b>	<b>5,758,541</b>
<b>Total Number of Buildings Owned</b>	<b>295</b>	<b>292</b>

<b>Leased Facilities - UVM as Lessee</b>	<b>FY 2004</b>	<b>FY 2014</b>
	<b>(Square Ftg)</b>	<b>(Square Ftg)</b>
In-State (10)	122,154	97,356
Out-of-State	0	0
<b>Total Square Footage Leased by UVM</b>	<b>122,154</b>	<b>97,356</b>

<b>PARKING - Spaces (provided by CATMA from Joint Institutional Parking Plan)</b>	<b>FY 2003</b>	<b>FY 2013</b>
	4,756	5,354

- (1) Higher Education Facilities Inventory and Classification Manual, 1973 by National Center for Higher Education Management Systems and Postsecondary Education Facilities Inventory and Classification Manual, November 1992 by the National Center for Education Statistics.
- (2) Special Use/General Use Facilities: Includes Media Production, Clinics(nonhealth), Demonstration, Field Buildings, Animal Quarter, Assembly, Exhibition, Food, Day Care, Lounge, Merchandising, Recreation and Meeting Facilities
- (3) Support Facilities: Includes Central Computer or Telecommunications, Shop, Central Storage, Vehicle Storage and Hazardous Materials Storage
- (4) Beginning in year 2000 the sf located at Degoesbriand Building and leased to FAHC was included
- (5) Inactive Space: includes space available for assignment but unassigned at time of inventory
- (6) Unusable Space: includes areas such as damp basements and other areas in need of repair
- (7) Net Assignable Square Footage: The sum of all areas on all floors of a building assigned to, or available for assignment to an occupant. Excluded are Custodial, Circulation, Mechanical, Elevators and Lavatories.
- (8) Net Unassignable Square Footage: Includes Custodial, Circulation, Mechanical, Elevators, Lavatories, and Unusable
- (9) Gross Square Footage: The sum of all areas on all floors of a building included within outside faces of its exterior walls.
- (10) In-State Leased Facilities: Square footage in Degoesbriand, (UVM's "Lease Back Agreement") is not included here, but in the above individual categories for facilities owned by UVM.

\* Land Holdings data was updated in 2010 to more accurately reflect month/year of acquisition/sale for fiscal year reporting. As a result, updated data may not exactly match previous Sourcebook data.

\*\* Note: Space data is based on last completed fiscal year space inventory as noted.



# Topical Information

# Topical Information

## UVM Libraries

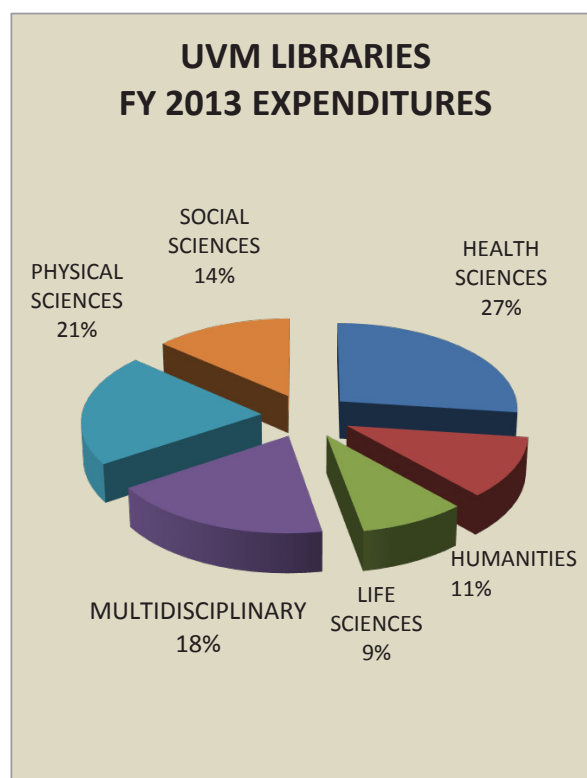
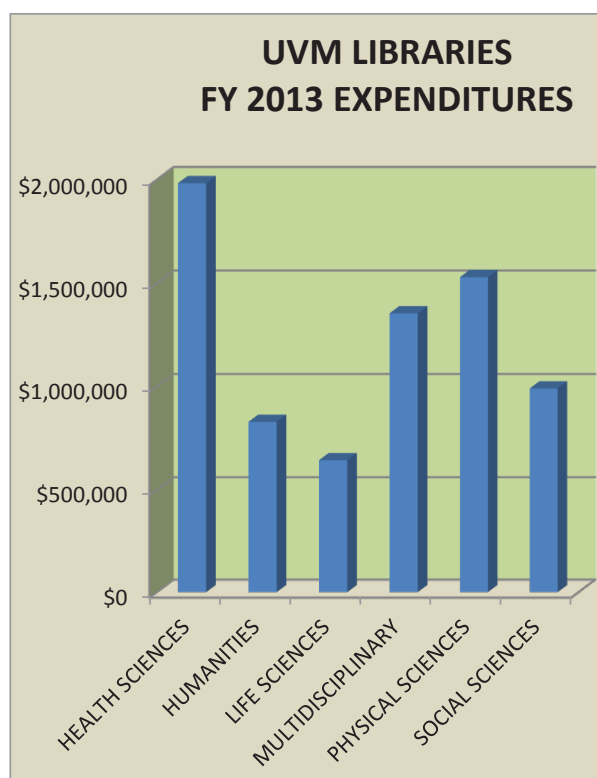
The University of Vermont Libraries furthers the creation, application, and dissemination of knowledge by providing access to information resources. The Libraries are a vital component of the University's commitment to excellence in instruction, innovation in research and scholarship, and dedication to public service. Collectively, the UVM Libraries are northern New England's largest public-research facility.

The Libraries' unique and important collections are distributed throughout two main locations: Bailey/Howe and Dana Medical; as well as the Libraries Research Annex and additional leased off-site storage.

The Libraries' total annual budget exceeds \$14 million, with a collection that consists of 1.5 million books, over 30,000 active online journal and database subscriptions, 1.1 million government documents, and 17,000 linear feet of manuscript and archival materials. Library operations and services are carried out by 27 full-time librarians, 3 part-time faculty, 60 full-time staff, and 5 part-time staff. Approximately 20,000 patrons engage the UVM Libraries each week. UVM's online catalog, Voyager, is available across the state on the Vermont Automated Library Network.

Library Liaisons serve as the principal contacts for campus departments and programs. Liaisons offer individual research consultations for faculty and students, teach classes to assist students in the successful completion of their research assignments, and work with instructional and library faculty to select materials.

The Libraries offer a variety of workshops, lectures, and exhibits throughout the year for both the campus community and the general public, on topics as diverse as technology, privacy, evolution, book arts, health sciences, Vermont history, and database and internet search tools.



## **UVM College of Medicine**

Established in 1822 as one of the nation's first medical schools, the University of Vermont College of Medicine provides significant value to the community, the state and the region.

The mission of the College is to educate a diverse group of dedicated physicians and biomedical scientists to serve across all the disciplines of medicine; to bring hope to patients by advancing medical knowledge through research; to integrate education and research to advance the quality and accessibility of patient care; and to engage with our communities to benefit Vermont and the world.

### ***Medical Education***

Over 35% of all physicians and 42% of the primary care physicians practicing in Vermont received their education or training at UVM and Fletcher Allen, and each year over 5,500 applicants compete for approximately 114 places in the entering class. Graduates go on to residencies at top institutions nationwide, many choosing to pursue careers in primary care. The award-winning Vermont Integrated Curriculum offers students a firm grounding in the basic sciences, early access to diverse clinical experiences, exposure to world-class research, and an emphasis on community engagement. Through an innovative curriculum that blends these experiences, students become competent, compassionate, dedicated physicians with a life-long desire to learn.

### ***Research***

The College has taken an innovative, multi-disciplinary approach to medical research that builds on its strengths in several key areas: neuroscience, behavior and health; cardiovascular disease; cancer; pulmonary disease; immunobiology/infectious disease; and healthcare delivery. In FY 2013, the College received \$68 million in external funding to support basic science and clinical research, representing 64% of the total research funding at the University. The College is home to four national Centers of Biomedical Research Excellence: the Vermont Center for Behavior and Health, the Center for Neuroscience Excellence, the Translational Research in Lung Biology and Disease Program (The Vermont Lung Center), and the Vermont Center for Immunology and Infectious Diseases. In addition, the Vermont Child Health Improvement Program has been adopted as a model for programs across the nation, and the College recently received a \$20 million Tobacco Centers of Regulatory Science (TCORS) award from the U.S. Food and Drug Administration and the National Institutes of Health, a new, first-of-its-kind regulatory science tobacco program designed to help inform the regulation of tobacco products.

### ***Patient Care***

Through a partnership with the University of Vermont Medical Group at Fletcher Allen Health Care, College of Medicine clinical faculty provide care for the people of Vermont and northern New York that is informed by medical education and research-based expertise. Fletcher Allen is Vermont's university medical center, offering advanced care to approximately one million people in Vermont and northern New York, with a Level I Trauma Center, the Vermont Children's Hospital, and a Level III Neonatal Intensive Care Unit. The organization also includes more than 30 patient care sites and 100 outreach clinics, programs and services across Vermont and northern New York. Fletcher Allen Partners is building an integrated care delivery system that includes a strong partnership with Central Vermont Medical Center and affiliations with Champlain Valley Physicians Hospital and Elizabethtown Hospital in northern New York.

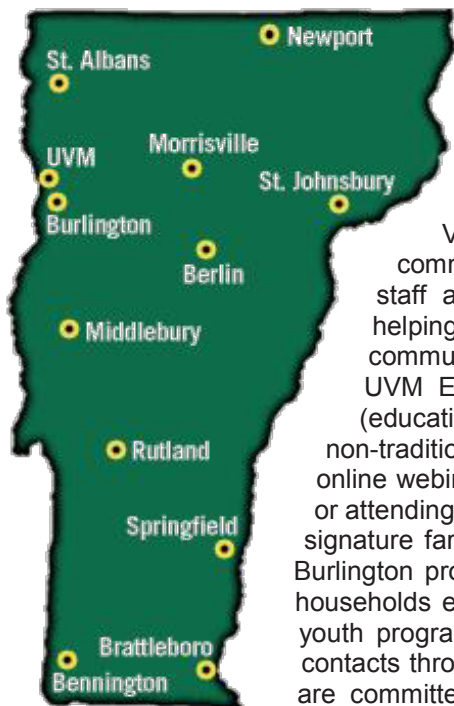
### ***Community Service***

The College is involved in community outreach and health improvement programs throughout Vermont, including the statewide Area Health Education Centers program, second-year student public health projects, Schweitzer Fellows, Community Medical School and more. In addition, faculty and students visit classrooms around the state with science programs like SMILE Docs and Project MICRO, which encourage the pursuit of careers in science and medicine.

## UVM Agricultural Services

**UVM Agricultural Services** personnel have worked throughout Vermont in cooperation with citizens, agricultural and natural resources-based agencies and enterprises, and Vermont communities since the founding of the Experiment Station in 1886. Through these services UVM is committed to sustaining Vermont's working landscape and cultivating healthy communities.

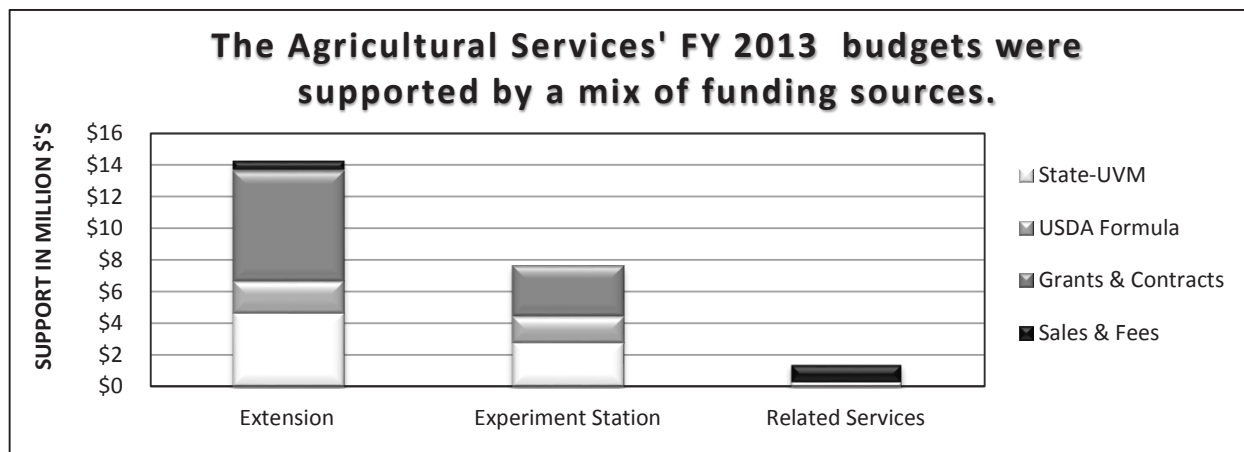
The **Vermont Agricultural Experiment Station** is a state/federal partnership created by the state legislature in 1886. The Station addresses Vermont's agricultural issues through research. . In FY 2013, Station researchers conducted 129 projects funded by public and private sources. Station researchers are nationally and internationally recognized for their excellence. Areas of particular research prominence



include 1) global food security and hunger; 2) climate change; 3) sustainable energy; 4) childhood obesity; 5) food safety; and 6) urban non point source pollution. A complete description of the research can be found on the VT-AES website (<http://www.uvm.edu/vtaes>).

**UVM Extension** is a state/federal partnership created by the Vermont Legislature in 1913, which works to cultivate healthy communities. Located in offices throughout the state, Extension faculty, staff and trained volunteers provide timely, research-based education, helping Vermonters to make sound decisions about their families, communities, businesses and the natural environment. In the past year, UVM Extension offered more than 1,000 significant educational events (educational programming of six or more hours), serving more than 13,000 non-traditional students. Thousands more learn by participating in interactive, online webinars; visiting the UVM Extension website ([www.uvm.edu/extension](http://www.uvm.edu/extension)) or attending workshops and other educational/informational events. Extension's signature farm and family television show "Across the Fence" on WCAX-TV in Burlington produces over 200 shows a year and, reaches an estimated 20,000 households each day. In addition, Extension's highly successful 4-H and other youth programs provide educational opportunities with more than 9,500 youth contacts through experiential learning and community service. Faculty and staff are committed to helping increase agricultural business profitability, enhance forest and farm stewardship and safety, promote economic vitality, increase adult and youth life skills and involvement in communities, and improve nutrition and food safety for thousands of Vermont consumers.

The **Agricultural Related Services** is a state-supported income/expense activity that provides land and facilities to support agricultural and life science teaching, research, and outreach programs. Facilities include the Proctor Maple Research Center, Morgan Horse Farm, Entomology Research Center, Pringle Herbarium, UVM Greenhouses, Blasberg Horticultural Center and the UVM Miller Farm.



## UVM Graduate College

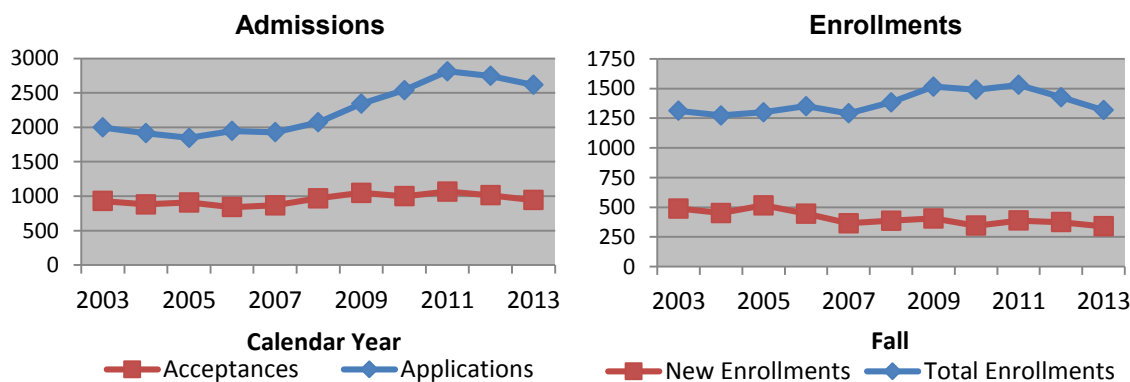
The graduate programs at UVM encompass doctoral and master's education in the basic and applied sciences and engineering; professional doctoral studies in education and physical therapy; professional master's programs in education, nursing, business, public administration and social services; and disciplinary master's programs in the humanities and social sciences. Accessibility to the graduate faculty is key to the educational experience, with high quality advising and direct research supervision identified by students as primary program attributes. In addition to the graduate degree programs reported below, 27 students are enrolled in Certificate of Graduate Study programs, and a number of degree students are concurrently enrolled in Certificate programs.

Fall 2013 Graduate Enrollment by Academic Unit			
College/School/Program	Master's	Doctoral	Total
Agriculture and Life Sciences	85	44	129
Arts and Sciences	75	128	203
Business Administration	56	0	56
Education and Social Services	295	53	348
Engineering and Mathematical Sciences	93	56	149
Environment and Natural Resources	46	44	90
Graduate College/Interdisciplinary (Bio. Eng., Cell, Mol. & Biomed. Sci., Clin. & Trans. Sci., Mat. Sci., Neuroscience, Food Syst.)	22	84	106
Medicine-Basic Sciences	5	26	31
Nursing and Health Sciences	114	91	205
<b>Total Graduate Enrollment</b>	<b>791</b>	<b>526</b>	<b>1317</b>

For Fall 2013, enrollments are evenly divided between professional programs and research-oriented programs. The graduate student body is diverse in gender, age, and experience. Nearly 60% are women and approximately half are non-traditional students. From Fall 2012 to Fall 2013 master's enrollment declined while doctoral enrollment remained steady, consistent with UVM's focus on doctoral education. ALANA and International student enrollment continued at the same relative percentage of total enrollment, 7.5% and 11.0%, respectively.

Fall 2013 Graduate Degree Programs with Greatest Enrollment			
Master's		Doctoral	
Curriculum & Instruction	99	Physical Therapy	91
Nursing	84	Cell, Molecular & Biomedical Sci.	64
Social Work	47	Psychology	56
Natural Resources	46	Ed. Leadership & Policy Studies	53
Counseling	37	Natural Resources	44
Special Education	36	Chemistry	37

Selectivity and enrollments vary by program. Graduates move into government agencies, education and service organizations, business and industry careers, and academic positions.



## UVM Alumni

### Our External Community: Alumni, Parents, and Friends

The community of UVM extends beyond the campus, throughout the city of Burlington, the state of Vermont, every state in the U.S., and 86 countries around the world. When the 2,400 undergraduate, graduate, and medical students in the class of 2013 graduated in May, they joined 103,022 members of the Alumni Association.

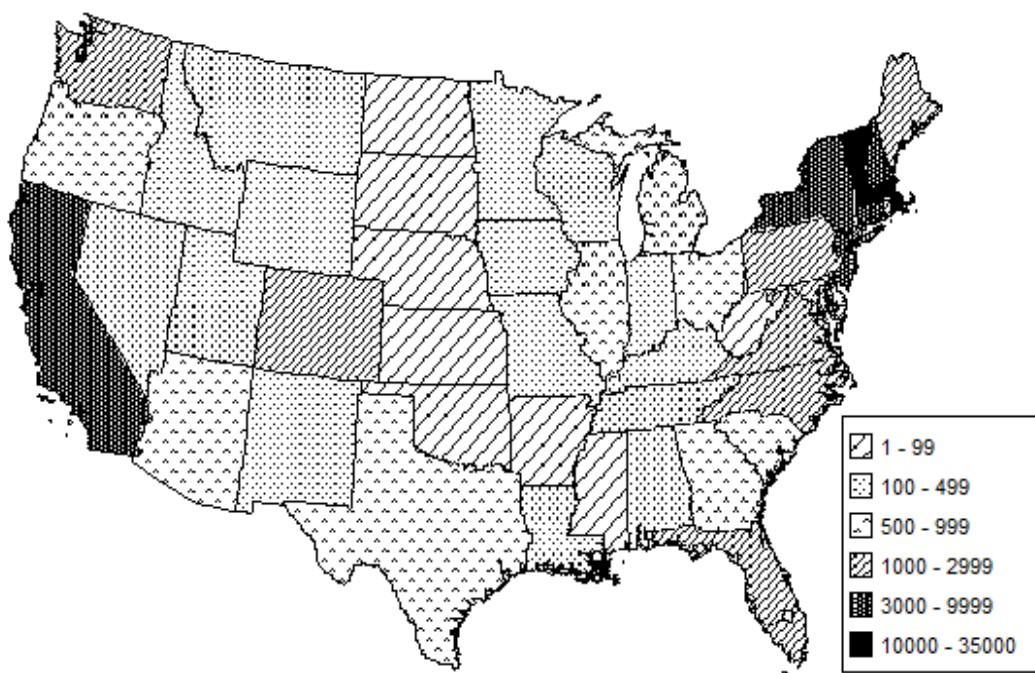
UVM has 105,422 alumni of which 79% hold undergraduate degrees, 11% hold graduate degrees and 4% hold more than one degree from the University. UVM alumni in Vermont currently number 31,447. More than 53% live in the New England states while there are 775 who live in other countries.

The UVM Alumni Association — a standing committee of the UVM Foundation — fosters lifelong relationships among a vibrant, global and diverse community engaged by a common desire to preserve, celebrate and enhance the University of Vermont and to enrich the lives of its members. The Alumni Association is led by a 25-member board of directors and delivers programs in more than 50 geographic locations, including regional boards in key alumni population centers of Boston, New York, Vermont and Washington DC. As critical members of the UVM family, parents are invited to participate in Alumni Association activities and volunteer opportunities both on and off campus.

In FY 2013, 20,674 alumni, parents and friends made a gift to UVM. Over 5,000 alumni and parents volunteered their time to UVM last year in a variety of ways, including serving on boards, mentoring students, assisting with admissions recruitment, planning local UVM events, raising money for the UVM annual giving programs, and helping students find jobs through the UVM Career Connection and Linked In networks.

**UVM Alumni in  
Vermont**

County	Alumni Count
Addison	2,062
Bennington	695
Caledonia	842
Chittenden	15,745
Essex	91
Franklin	1,438
Grand Isle	478
Lamoille	1,083
Orange	811
Orleans	666
Rutland	1,704
Washington	3,156
Windham	941
Windsor	1,735
<b>Total</b>	<b>31,447</b>



Map does not include Alaska (100-499) or Hawaii (100-499)

## UVM Continuing and Distance Education

**UVM's Continuing and Distance Education (CDE).** CDE serves the University of Vermont's commitment to lifelong learning and statewide outreach. Through the development and delivery of courses, programs and professional certificates on the UVM campus, online, and at designated off-campus locations, CDE connects the resources of the University with the needs of diverse part-time students year-round, as well as undergraduate and graduate students during the summer and winter sessions. CDE's educational opportunities attract more than 8,500 individuals from Vermont and beyond.

- **College Credit, Academic Year.** During the academic year, more than 400 credit courses are offered at times most convenient for CDE students. Early morning, late afternoon, evening, weekend, and online courses provide greater access for over 4,700 CDE students who enroll annually. CDE attracts high school students, pre-college and college students, pre-graduate/pre-professional students, and working professionals. Students enroll in credit courses for in preparation for graduate and undergraduate programs, for professional certification, or career advancement.
- **Summer University.** CDE enrolls approximately 3,500 UVM undergraduate, graduate and part-time students in over 500 courses during Summer University through innovative field study courses, 160 online courses along with intensives and opportunities to study abroad. Summer courses are open to high school students and undergraduate and graduate students from other institutions.
- **Pre-College.** Vermont high school students are eligible for state-funded vouchers to take two college courses tuition free. Over 350 high school students were enrolled in Summer University with 75 in and out of state students participating in Summer Academy and Dublin abroad. About 150 students are enrolled through CDE during the academic year. Through the Guaranteed Admission Program (GAP), high school graduates can build the necessary academic credentials for admission to UVM through an individualized program of study approved by an academic department. In FY 2013, GAP generated 530 enrollments with approximately 43% of students matriculating to undergraduate degree candidates at UVM.
- **Post-Baccalaureate Pre-Medical Program.** This program is designed for highly-qualified individuals with a bachelor's degree who are committed to entering the healthcare profession but lack science courses necessary for admission to a professional program. In FY 2013, 110 students were enrolled in the program. To date, over 100 graduates of the program have matriculated to UVM's College of Medicine. The program currently has an over 90% placement rate into medical and health professional schools.
- **U.S.-Sino Pathway Program (USPP).** This program is a unique partnership between a consortium of leading American universities and the global education service provider Kaplan China. The program offers a success-oriented pathway for talented Chinese students to pursue their undergraduate studies in the U.S. Students receive a year of course credits toward their bachelor's degree, and English language preparation.
- **Vermont's Teachers/Administrators.** Teachers, administrators, and paraprofessionals take advantage of UVM's expertise in education and social services through enrollment in on-campus and online courses and certificates, the Springfield Howard Dean Education Center, and public schools.
- **Lane Series.** The Lane Series is among Vermont's premier presenters of performing arts. The series is committed to enriching the cultural education of UVM students and Vermonters by providing diverse concerts and programs. Each year, over 7,500 people attended a Lane Series event.
- **Aiken Lecture Series.** The George D. Aiken Lecture Series for 2013 includes a lecture by Steven Pinker, Johnstone Professor of Psychology at Harvard, entitled *War and Peace: A History of Violence*. Aiken lectures typically draw over 600 participants to campus.
- **OLLI.** The Osher Life Long Learning Institute with over 900 members offers programming for adults 50+ on the UVM campus and international travel abroad each year. The \$50 annual membership provides access to seminars, salons and travel programs.
- **Legal Issues in Higher Education.** Now in its 23rd year, this annual conference attracts over 300 participants from areas of higher education including student affairs, administration, legal counsel, and deans. Held every fall in Burlington, this conference has an outstanding reputation with a national audience.
- **Center for Leadership & Innovation.** CDE offers leadership, management and project management seminars designed for mid- to high-level decision makers. Programs offered each year attract over 500 participants representing a diverse number of businesses. The Center also provides related business services including needs assessment and custom training. Many courses are eligible for Vermont Training Program grant funds for up to a 50% tuition reduction.

**Admit Rate (%)** - The percentage of applicants who apply who are offered admission.

**Admitted Students (Admits)** - The number of applicants offered admission.

**Applicants** - Students who apply for admission to a degree program.

**Appropriation** - Legislative authorization to expend funds for a specific purpose.

**Base Budget** - The total continuing expenditures and related resources allocated to carry out present levels of program activity.

**Budget** - Authorized and estimated expenditures to be made in a definite time period as well as the estimated source of funds for such expenditures.

**Capital Appropriation** - Allocation from the State of Vermont for capital (fixed assets) construction, purchase, or renovation.

**Composite Benefit Rate** - A simple ratio (or percentage) of benefit costs divided by a cost base of salaries and wages paid.

**Debt Service** - Disbursements made for principal and interest requirements on institutional debt.

**Endowment Funds** - A fund group stipulated by donors' gift instruments as non-expendable but which may be invested for the purpose of producing income. Income accruing from such investment can be expended.

**Enrolling Students (Enrolls)** - The number of admitted applicants who actually enroll.

**Facilities and Administrative Cost Reimbursement** - Payment by a sponsor to the University for a portion of those costs (e.g. plant maintenance, library operations, research, departmental and general administration) not readily identifiable with a particular project but which support the sponsored activity.

**First-Time, First Year Students** - Students enrolled at the University who have had no previous college experience.

**First Year Students** – All first-time, first year students (first-time freshmen) and all other undergraduates with fewer than twenty seven credit hours.

**Full-Time Enrollment** - The number of students who are taking at least a minimum "full-time course load." A minimum full-time load is defined as 12 student credit hours per semester for undergraduate and non-degree students and 9 credit hours for graduate and certificate students. All medical students are considered full-time. Students enrolled in GRAD903 are also considered full-time.

**Full-Time Equivalent Students Taught (FTE-S)** - An indication of teaching loads derived from student credit hours taught (SCH) where total student credit hours are divided by the defined full-time credit hour load. It is the numerator in calculating the student-to-faculty ratio. For undergraduate and non-degree students a full-time load is defined as 15 credit hours a semester, 30 credit hours for the full academic year. A full-time load for graduate and certificate students is defined as 12 credit hours a semester, 24 credit hours for the full academic year.

**Full-Time Equivalent (FTE) Faculty** - All full-time faculty have a full-time equivalency (FTE) equal to 1.00. Part-time faculty have a full-time equivalency ranging from 0.00 to 0.99 based upon their job responsibilities

and length of appointment. University FTE does not make any distinction based on how the faculty member is paid, i.e., University general fund, research grants, formula funds, etc.

**General Fund** - A portion of current operations utilizing net tuition, state appropriation, and other general income as revenue in support of academic, administrative, and departmental operations.

**General Fund Full-Time Equivalent (FTE-F) Faculty** - The portion of a faculty member's FTE that is paid from the University's general fund. This general fund FTE is assumed to support the instructional activities of the faculty including classroom instruction, advising, departmental administration, University service, unfunded research, etc.

**Graduation Rates** - The percentage of entering first-time, first year students who graduate from the University within a set period of time, usually 6 years.

**Headcount Enrollment** - The total number of students enrolled. Each student counts as 'one' regardless of the number of courses or credit hours taken.

**Headcount Faculty** - The total number of persons employed, either full-time or part-time, whose primary appointment title is that of a faculty member.

**Part-Time Enrollment** - The number of students who are taking less than a minimum full-time course load.

**Restricted Resources** - Funds such as grants, contracts, gifts, or endowment income that must be spent for a specific purpose designated by an external sponsor or donor.

**Retention/Retention Rates** - The percentage of undergraduate students who are enrolled at the University after one, two, three, etc. years.

**Sponsored Funds** - Grants or contracts that require periodic fiscal and project reporting to a sponsor (very often a federal/state agency).

**Yield Rate (%)** - The percentage of admitted applicants who actually enroll.