

## College Graduation Travel Guide

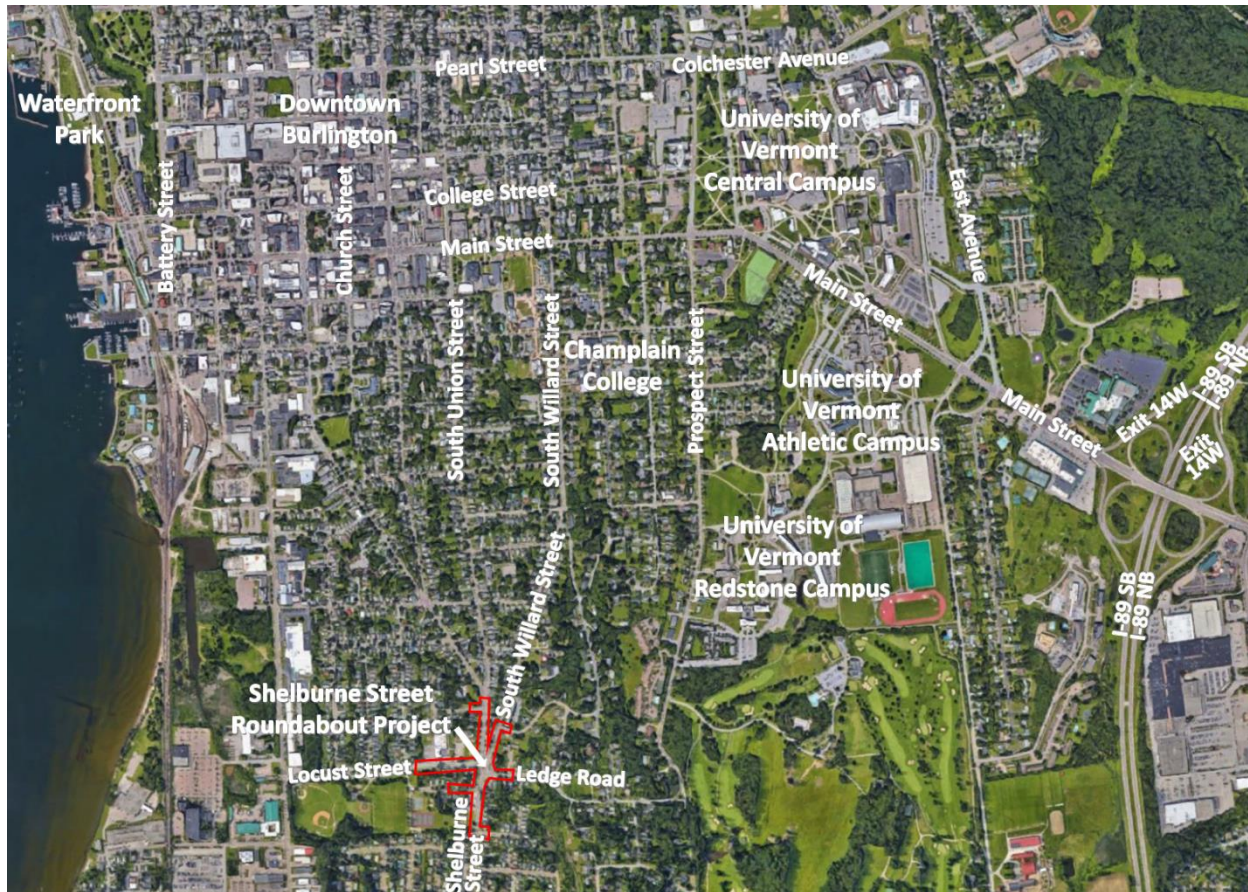
### Shelburne Street Roundabout

**DATE:** Thursday, May 5, 2022

Dear graduates, family, friends, and faculty,

The Shelburne Street Roundabout Project Team would like to extend our congratulations to Vermont's new graduates and all those who helped them along the way. We understand how busy and exciting this momentous occasion can be and wanted to take this time to provide construction and travel information that will be helpful when coordinating your travel plans.

The Vermont Agency of Transportation and the City of Burlington are improving roadway conditions for all users along U.S. Route 7 (Shelburne Street) in Burlington through the construction of the Shelburne Street Roundabout Project. This active construction project is located at the intersection of Shelburne Street (U.S. 7) at Locust Street, Ledge Road, and South Willard Street (U.S. 2/7) in Burlington, Vermont approximately  $\frac{3}{4}$  of a mile south of Champlain College and 1.4 miles southwest of the University of Vermont's Central Campus.



There are several active roadway impacts as part of the Shelburne Street Roundabout Project including portions of South Willard Street (U.S. 2/7) and Shelburne Street (U.S. 7) within the vicinity of the project. These closures and the recommended detour routes are signed. Residential access to these areas will be maintained. Please see the additional travel guidance below.

### **Travel Guidance for the South Willard Street Closure**

South Willard Street is closed to all traffic between Chittenden Drive and Shelburne Street (U.S. 7) and is local traffic only from Howard Street to Shelburne Street (U.S. 7). Visitors traveling to and from locations along South Willard Street (U.S. 2/7) such as Champlain College are encouraged to use the Main Street access/egress to the north.

### **Travel Guidance for Shelburne Street**

The work zone extends along Shelburne Street from Adams Court to Marian Street, Visitors are encouraged to follow the signed detour as shown below. Northbound motorists traveling along Shelburne Street (U.S. 7) are encouraged to detour to Flynn Avenue, to Pine Street, to Main Street, and back to South Willard Street (U.S. 2/7). Southbound motorists traveling along South Willard Street (U.S. 2/7) are encouraged to detour to Main Street, to Pine Street, to Flynn Avenue, and back to Shelburne Street (U.S. 7).



### **Travel Guidance to and from Interstate 89**

Due to the construction impacts on the portion of Shelburne Street (U.S. 7) within the project area, visitors traveling to and from Champlain College, the University of Vermont, or downtown Burlington from Interstate 89 from the north or the south are encouraged to take Exit 14W (Milepoint Exit 88B) to U.S. 2 West towards Burlington.

Champlain College, the University of Vermont, or downtown Burlington can be accessed via Main Street.

For additional project information, please visit the [project website](#) or contact us through email at [info@ShelburneStreetRoundabout.com](mailto:info@ShelburneStreetRoundabout.com) or by calling the project hotline at 802-496-8956.

Congratulations again! Have a happy and safe graduation weekend!

Best,

The Shelburne Street Roundabout Project Team