

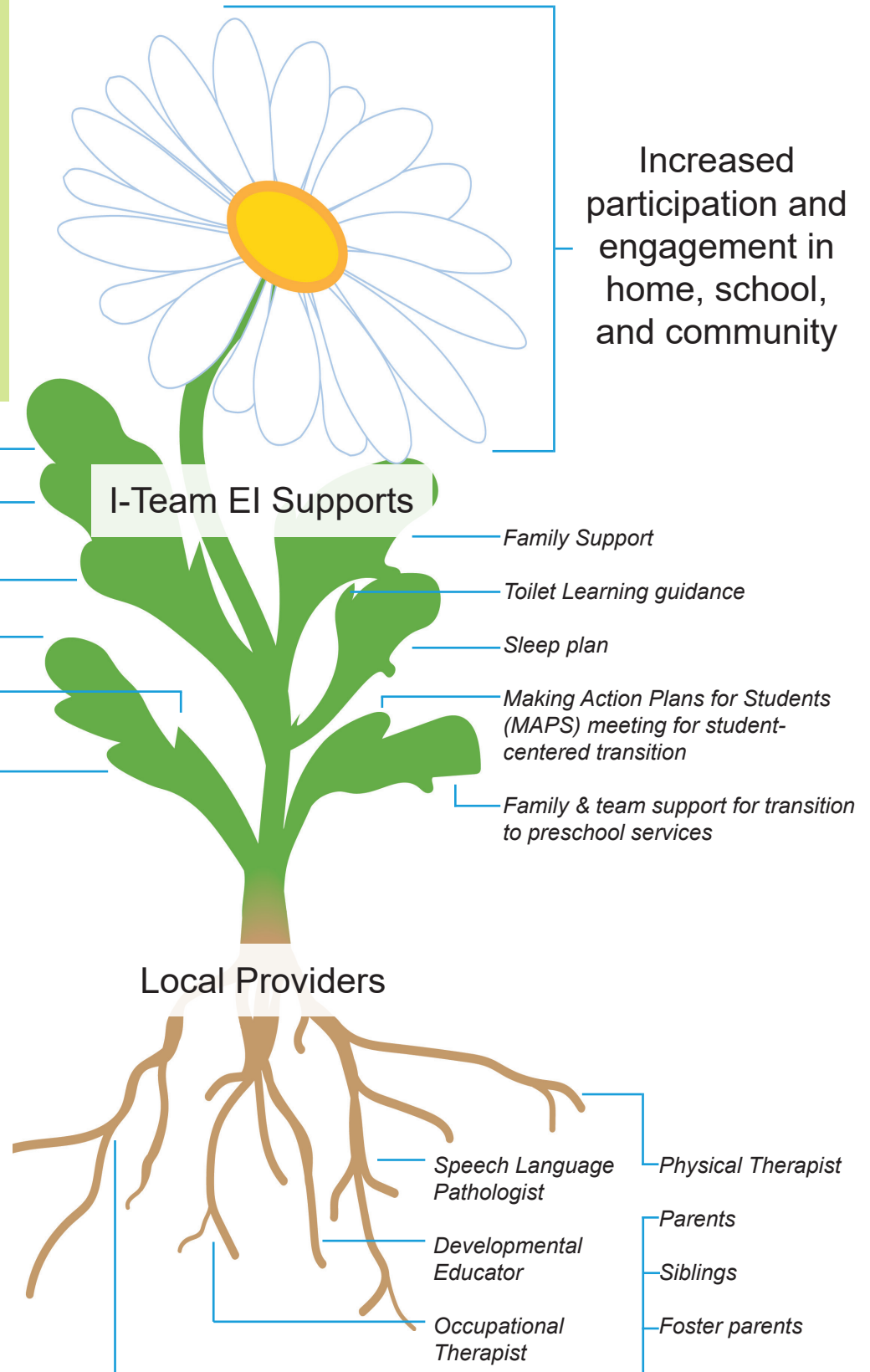
# Sally in Bloom

## 2020 I-Team EI Case Study

Our collaborative team includes a Special Educator, Communication Consultant, pediatric Occupational and Physical Therapists, and a Family Resource Consultant.

Sally's team worked with I-Team Early Intervention from the time she was 18 months until she turned 3. She has a diagnosis of Cerebral Palsy and lives with foster parents with her three older siblings.

Increased participation and engagement in home, school, and community



“The I-Team is amazing! Always there with whatever help or information we needed. For a long time we didn’t know they existed. But once they came into our lives so many things changed for the better.”

-Foster Parent

“The collaboration with iteam has been very supportive. I appreciate the out-the-box thinking and professional collaboration and problem solving.”

-SLP



**Vermont I-Team**  
Early Intervention Project