



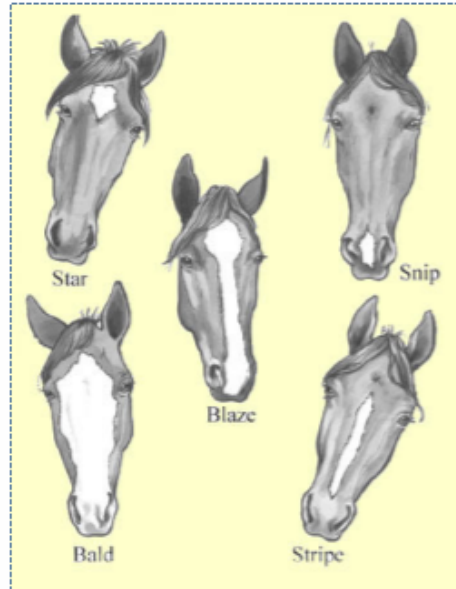
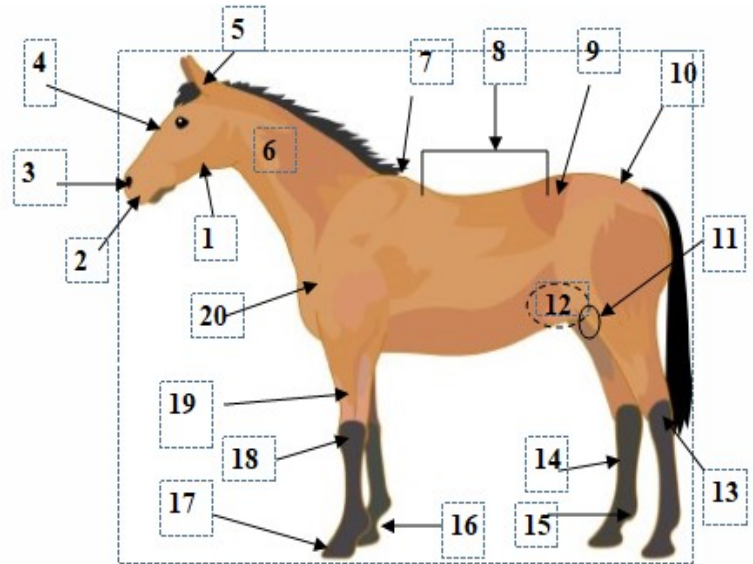
4-H Horse Activity #1

Answer key



Horse Anatomy: Identify the body parts of a horse by placing the correct letter in the blank.

- | | | |
|------------------|-----------------------------|-------------------|
| <u>5</u> Poll | <u>4</u> Forehead | |
| <u>9</u> Loin | <u>8</u> Back | |
| <u>18</u> Knee | <u>17</u> Hoof | <u>1</u> Jaw |
| <u>6</u> Neck | <u>15</u> Fetlock | <u>11</u> Stifle |
| <u>13</u> Hock | <u>10</u> Croup | <u>3</u> Nostril |
| <u>12</u> Flank | <u>19</u> Forearm | <u>16</u> Pastern |
| <u>2</u> Muzzle | <u>14</u> Cannon | |
| <u>7</u> Withers | <u>20</u> Point of Shoulder | |



Match the face pattern to the choices below

- Star
- Stripe
- Blaze
- Snip
- Bald

Did you know?

- Horses are herbivores
- Horses teeth never stop growing
- A horse has two blind spots; one directly in front and one directly behind
- Horses cannot vomit
- You measure a horse in hands
- An average horse will live 20-25 years
- A male horse is called a stallion
- A female horse is called a mare
- A horse typically sleeps 2 1/2 to 3 hours per day
- The left side of a horse is called the "near side" and the right side is called the "off side"
- Horses generally dislike the smell of pigs!

Developed by Melinda Birch, April 2020