



# DAIRY ACTIVITY SHEET

## Page 1



**Life skill:** Decision making

**SET Ability:** Interpret/Analyze/Reason

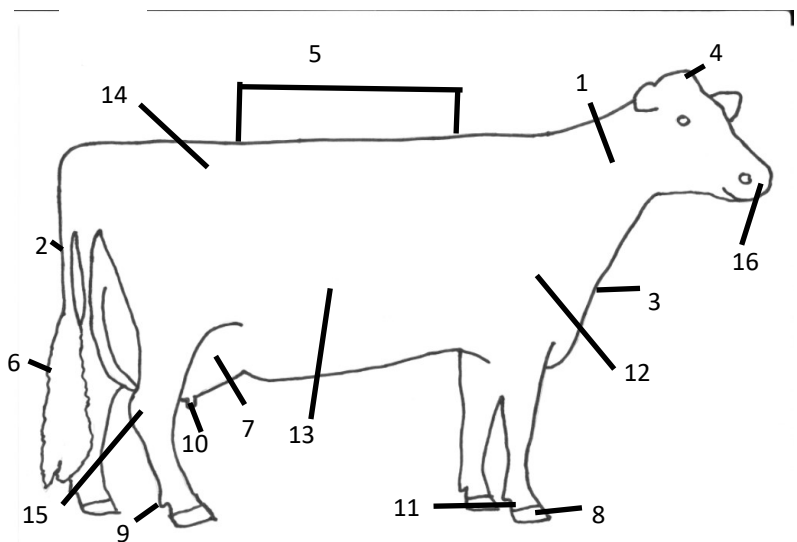
**To Make the Best Better**

**Learning By Doing**

**Dairy Anatomy:**

**Match parts to numbers**

- |                             |                  |
|-----------------------------|------------------|
| <u>1</u> Neck               | <u>14</u> Hips   |
| <u>4</u> Poll               | <u>2</u> Tail    |
| <u>5</u> Back               | <u>15</u> Hock   |
| <u>3</u> Dewlap             | <u>10</u> Teat   |
| <u>6</u> Switch             | <u>8</u> Hoof    |
| <u>12</u> Point of shoulder | <u>7</u> Udder   |
| <u>11</u> Pastern           | <u>16</u> Muzzle |
| <u>13</u> Barrel            | <u>9</u> Dewclaw |



**Breeds of Cows—Bovine**

There are 6 major breeds of dairy cows in America. Dairy cattle first appeared in America in 1492 with the arrival of Christopher Columbus. They were used as multi purpose; milk, meat & draft. It was in the late 1800s with more people moving into cities & towns that farmers found larger markets for their milk and this was when the six breeds were imported in their greatest numbers.

- |                   |          |
|-------------------|----------|
| Ayrshire          | <u>C</u> |
| Brown Swiss       | <u>F</u> |
| Guernsey          | <u>D</u> |
| Holstein          | <u>A</u> |
| Jersey            | <u>B</u> |
| Milking Shorthorn | <u>E</u> |

- |   |                  |
|---|------------------|
| A | Netherlands      |
| B | Isle of Jersey   |
| C | Scotland         |
| D | Isle of Guernsey |
| E | England          |
| F | Switzerland      |