

Burlington International Airport's Stormwater Monitoring & Maintenance Methods





BTV's Stormwater Program

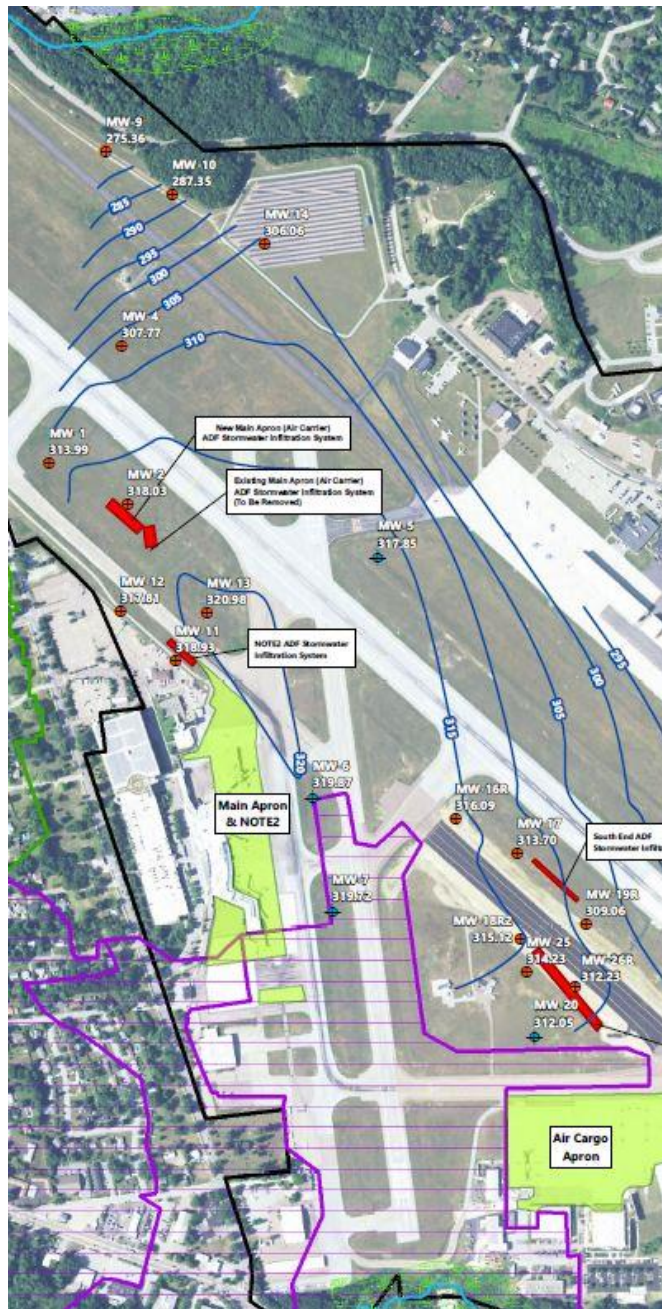


TWENTY STORMWATER BMPs

STORMTRAP

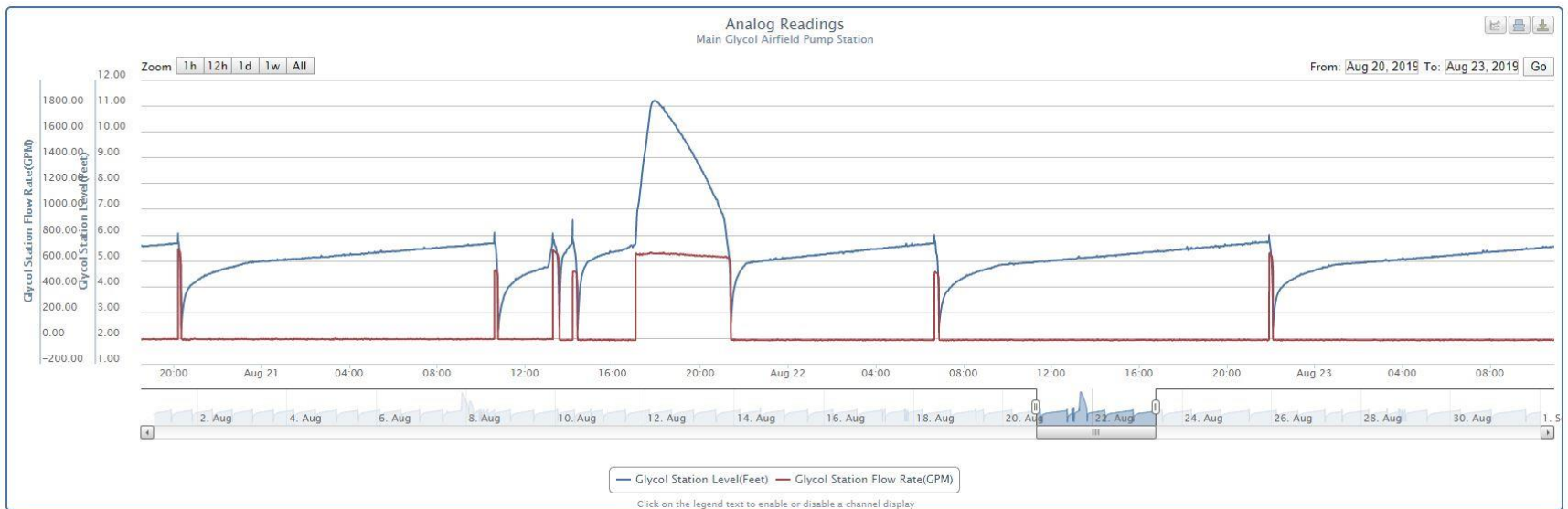
BTV is home to the largest Underground Stormwater Infiltration System in the State of Vermont.





AIRCRAFT DE-ICING FLUID DISPOSAL SYSTEM

MISSION INTERFACE



OUTFALLS



New Inspection Process VEOCI

How does it work?

CATCHBASINS #50563156

Name

S4.011.1

Location Point

44.45748554852021, -73.14689367008999

Remarks

Good condition.

Description

CB

Location

North of T/W Charlie, east of T/W Kilo

Geometry

Round

Cover Type

Grate

Fish Present (Y/N)

Nh

Boils

No

Bolt Size

<No Value>

Magnet

Yes

Dimension

<No Value>

Diameter

4'

Depth

13'-4"

Sediment Depth (inches)

0

Photo

ovv_photo_001.jpg

ovv_photo_002.jpg

Inspection Status

Inspected

Current Status

<No Value>

Last Inspected

Enter a location

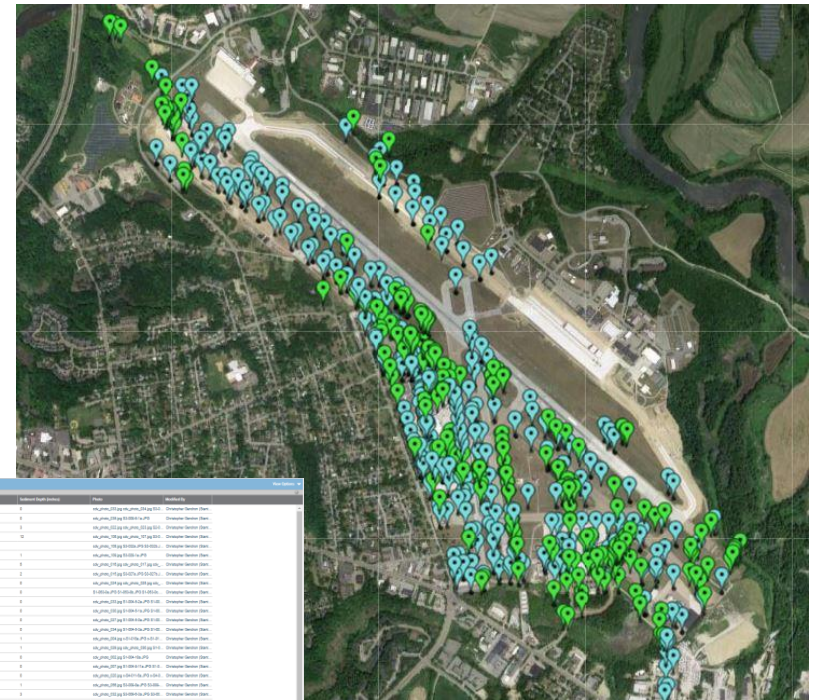
All Stormwater...

Map

Satellite

ID	Location	Depth	Inspection Date	Inspection Status	Inspection Notes
50563156-001	Stormwater Catchbasin	13'-4"	2023-10-10	Inspected	Good condition.
50563156-002	Stormwater Catchbasin	13'-4"	2023-10-10	Inspected	Good condition.
50563156-003	Stormwater Catchbasin	13'-4"	2023-10-10	Inspected	Good condition.
50563156-004	Stormwater Catchbasin	13'-4"	2023-10-10	Inspected	Good condition.
50563156-005	Stormwater Catchbasin	13'-4"	2023-10-10	Inspected	Good condition.
50563156-006	Stormwater Catchbasin	13'-4"	2023-10-10	Inspected	Good condition.
50563156-007	Stormwater Catchbasin	13'-4"	2023-10-10	Inspected	Good condition.
50563156-008	Stormwater Catchbasin	13'-4"	2023-10-10	Inspected	Good condition.
50563156-009	Stormwater Catchbasin	13'-4"	2023-10-10	Inspected	Good condition.
50563156-010	Stormwater Catchbasin	13'-4"	2023-10-10	Inspected	Good condition.
50563156-011	Stormwater Catchbasin	13'-4"	2023-10-10	Inspected	Good condition.
50563156-012	Stormwater Catchbasin	13'-4"	2023-10-10	Inspected	Good condition.
50563156-013	Stormwater Catchbasin	13'-4"	2023-10-10	Inspected	Good condition.
50563156-014	Stormwater Catchbasin	13'-4"	2023-10-10	Inspected	Good condition.
50563156-015	Stormwater Catchbasin	13'-4"	2023-10-10	Inspected	Good condition.
50563156-016	Stormwater Catchbasin	13'-4"	2023-10-10	Inspected	Good condition.
50563156-017	Stormwater Catchbasin	13'-4"	2023-10-10	Inspected	Good condition.
50563156-018	Stormwater Catchbasin	13'-4"	2023-10-10	Inspected	Good condition.
50563156-019	Stormwater Catchbasin	13'-4"	2023-10-10	Inspected	Good condition.
50563156-020	Stormwater Catchbasin	13'-4"	2023-10-10	Inspected	Good condition.

What are the Benefits?



Cost Savings?



Burlington International Airport's Stormwater Monitoring & Maintenance Methods

