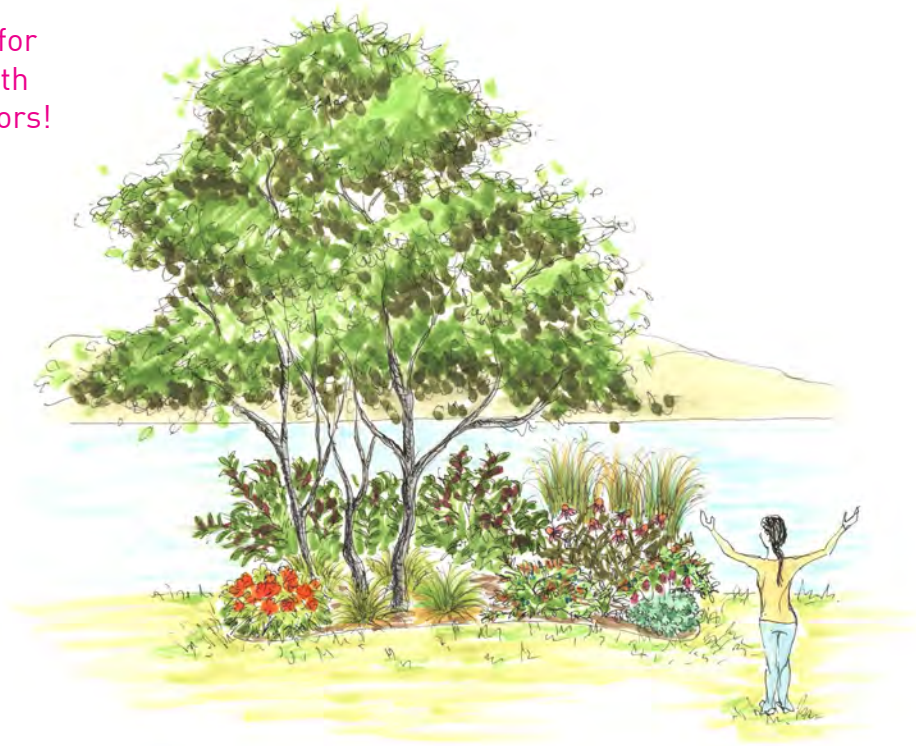


EDIBLE BEACH EDEN

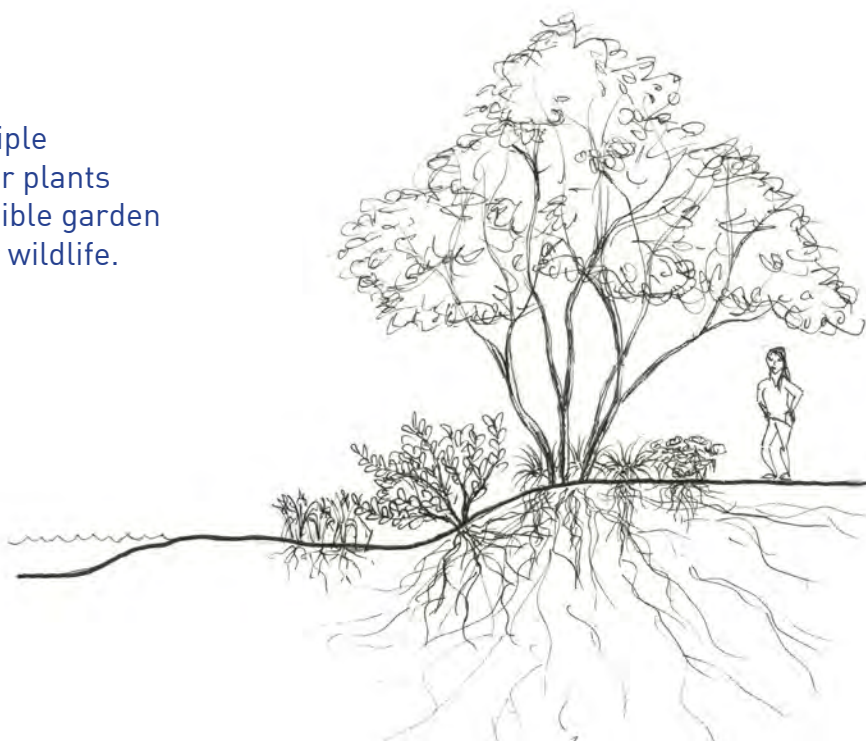
A lakeside sanctuary for wildlife and people with gorgeous autumn colors!



This garden will make your shoreline more enjoyable and frame the view with edible berries and season-long blooms. Plants were selected for their tolerance to partly sunny and partly shady conditions with moist, but not saturated, soils. The diverse root systems will stabilize the lakeshore bank and help maintain a sandy beach.

Section View

The edible plant garden has multiple varieties of tasty berries and other plants with medicinal properties. The edible garden also provides food and habitat for wildlife.





EDIBLE BEACH EDEN

Planting Plan

Aquilegia Canadensis
Columbine (3)

Vaccinium angustifolium
Lowbush Blueberry (3)

Echinacea purpurea
Purple Coneflower (4)

Panicum virgatum
Switchgrass (3)

Amelanchier laevis
Downy Serviceberry

Asclepias tuberosa
Butterfly Milkweed (3)

Carex stricta
Tussock Sedge (4)

Aronia melanocarpa
Black Chokeberry (2)

Iris versicolor
Blue Flag Iris (5+)

