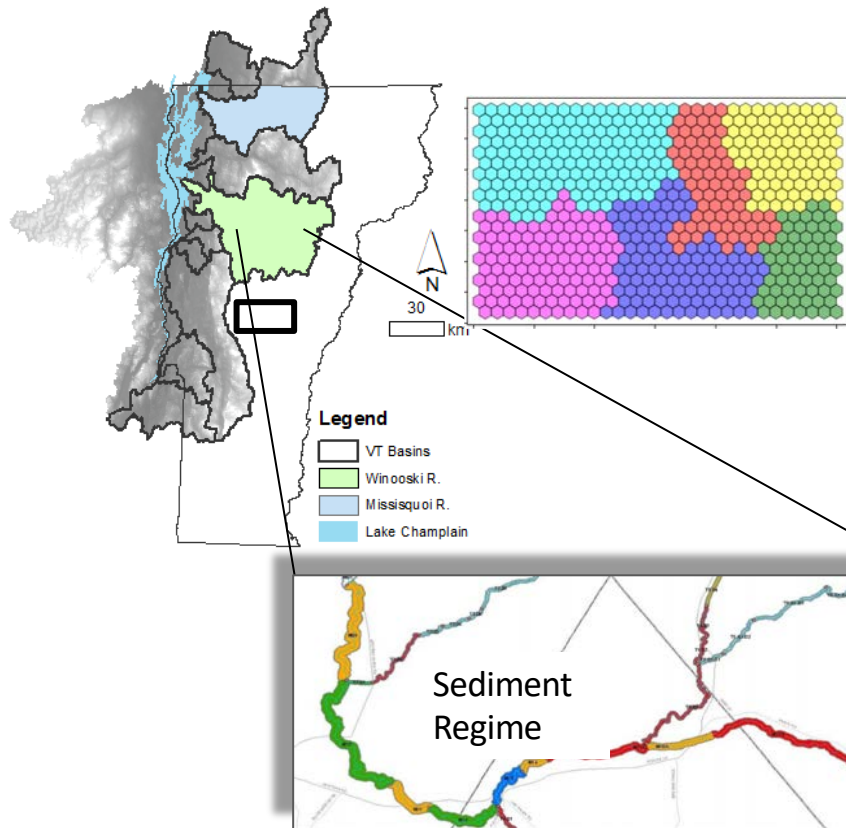


Resiliency projects and initiatives

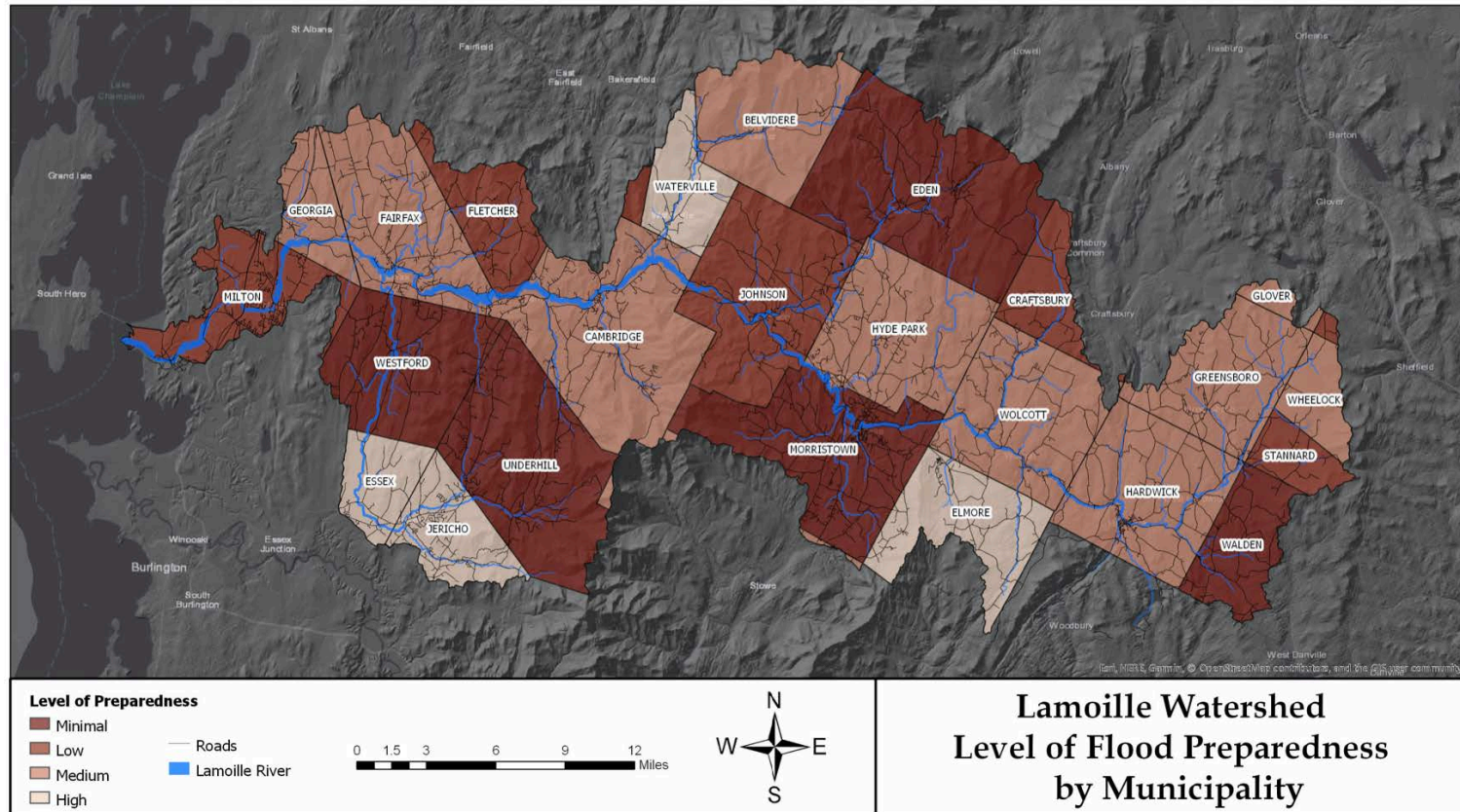
Sea Grant Week
December 2020



Visualization tools communicate riverine erosion hazards and improve flood resiliency in headwater communities



Watershed "scorecards" help increase flood resiliency in 3 river basins



Public outreach supports a study to increase resiliency to flooding in the Lake Champlain-Richelieu River basin

International Joint Commission study about the causes, impacts, risks, and solutions to flooding in the international Lake Champlain and Richelieu River basin. Final report expected in 2021.

FACT

In the spring, rain and snowmelt can cause water levels to rise in lakes and rivers. Flooding occurs when lakes and rivers become overwhelmed and water spreads over adjacent land. In the past several decades, average water levels have increased, but the incidence of flooding has not increased appreciably.

FACT

Following extensive flooding in the basin in 2011, the governments of Canada and the United States requested that the International Joint Commission study the causes and impacts of flooding in the Lake Champlain-Richelieu River system. In 2021, the binational study will recommend measures to reduce the impacts of future flooding in the watershed.



http://ijc.org/en/_LCRR

Key programming areas enhance understanding of natural assets management

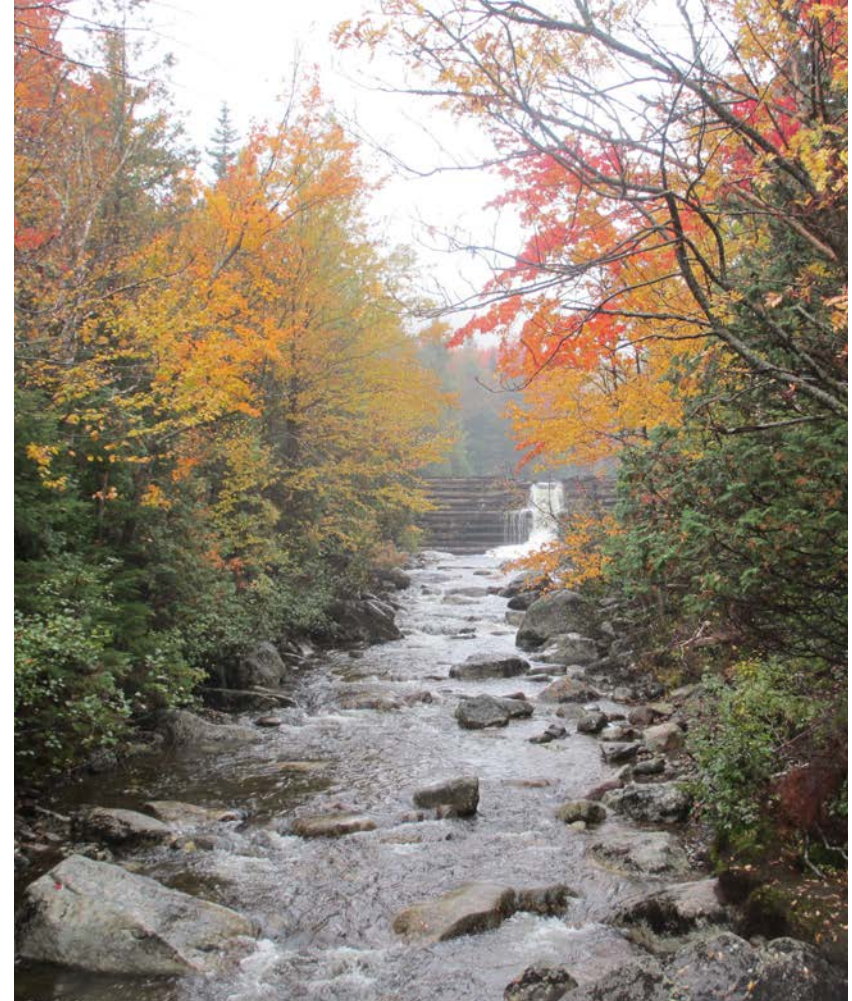
Watershed Forestry Partnership

Future Forests for Clean Water

- Listserv and newsletter
- Applied research
- <http://go.uvm.edu/forests>

Green infrastructure

- Stormwater management operations and maintenance manual
- Trainings
- Green Schools Initiative to help schools comply with the three-acre rule
- <http://go.uvm.edu/naturalassets>



Landowners are supported to engage in personal property management

Continuing education for real estate agents

- Vermont's Shoreland Protection Act
- Web-based mapping and more
- <http://go.uvm.edu/realestate>



Partner Programs: Lake Education and Action Program (LEAP)

- Homeowner education
- Workforce development
- Stewardship projects

BLUE

- Homeowner stormwater consultations
- <http://go.uvm.edu/blue>

