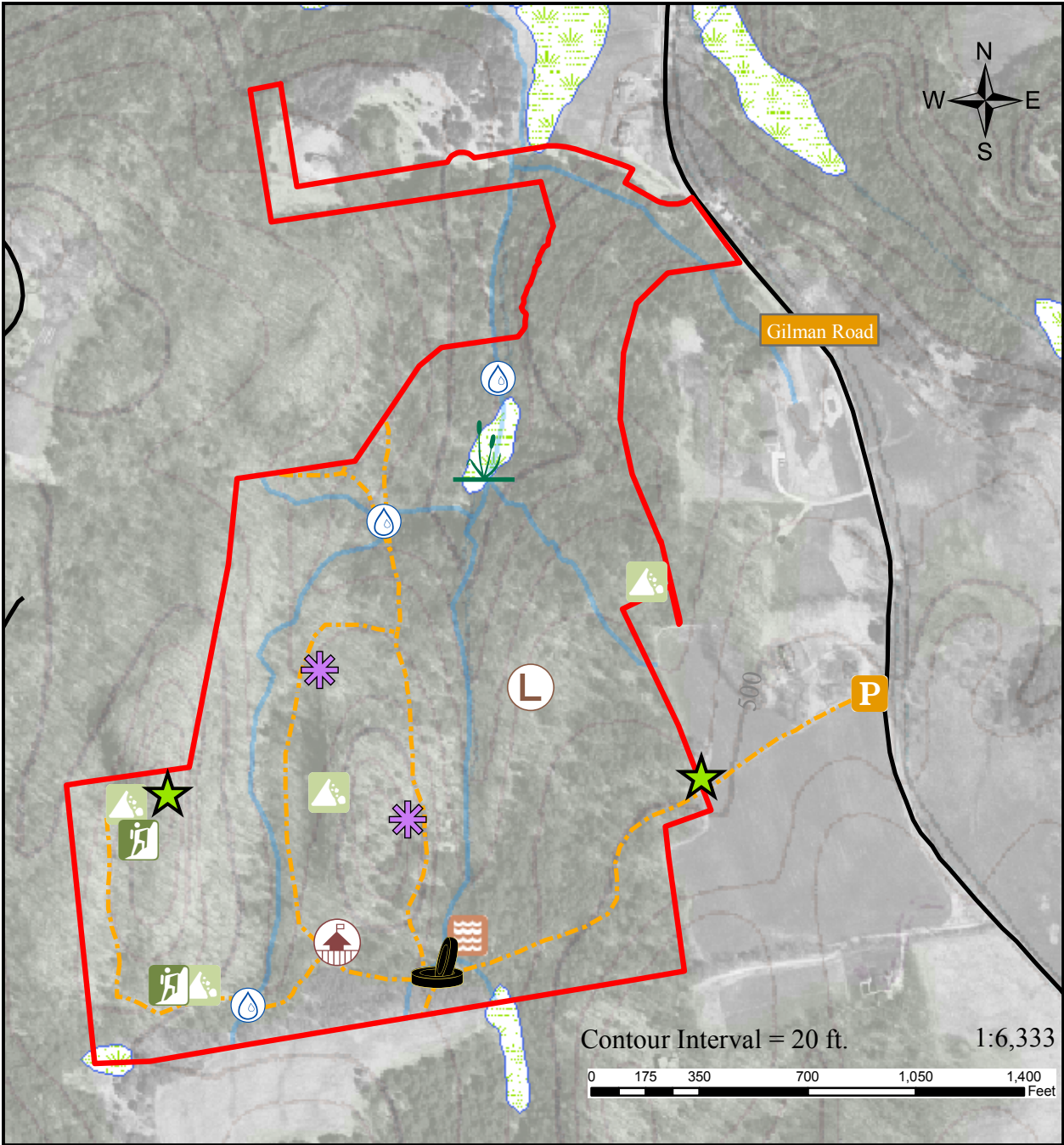


# Educational Hotspots

## Map 3

Owl's Knoll on the Bissonette Farm  
 Hinesburg, Vermont  
 Summer 2006



**Legend**

- Property Boundary
- Parking
- Trails
- Roads
- Streams
- Wetlands

**Educational Hotspots**

- Cliff and Talus
- Stream Access
- Cattail Wetland
- Stream Erosion
- Wildlife Tree
- Spring Wildflower Site
- Sugarhouse/Camp Remains
- Ridge Access
- Recently Logged Stand
- Gully with clay exposure

**Created by Kristen Sharpless**  
 Field Naturalist, University of Vermont

All layers produced by Kristen Sharpless,  
 Vermont Center for Geographic Information,  
 and the Trust for Public Land