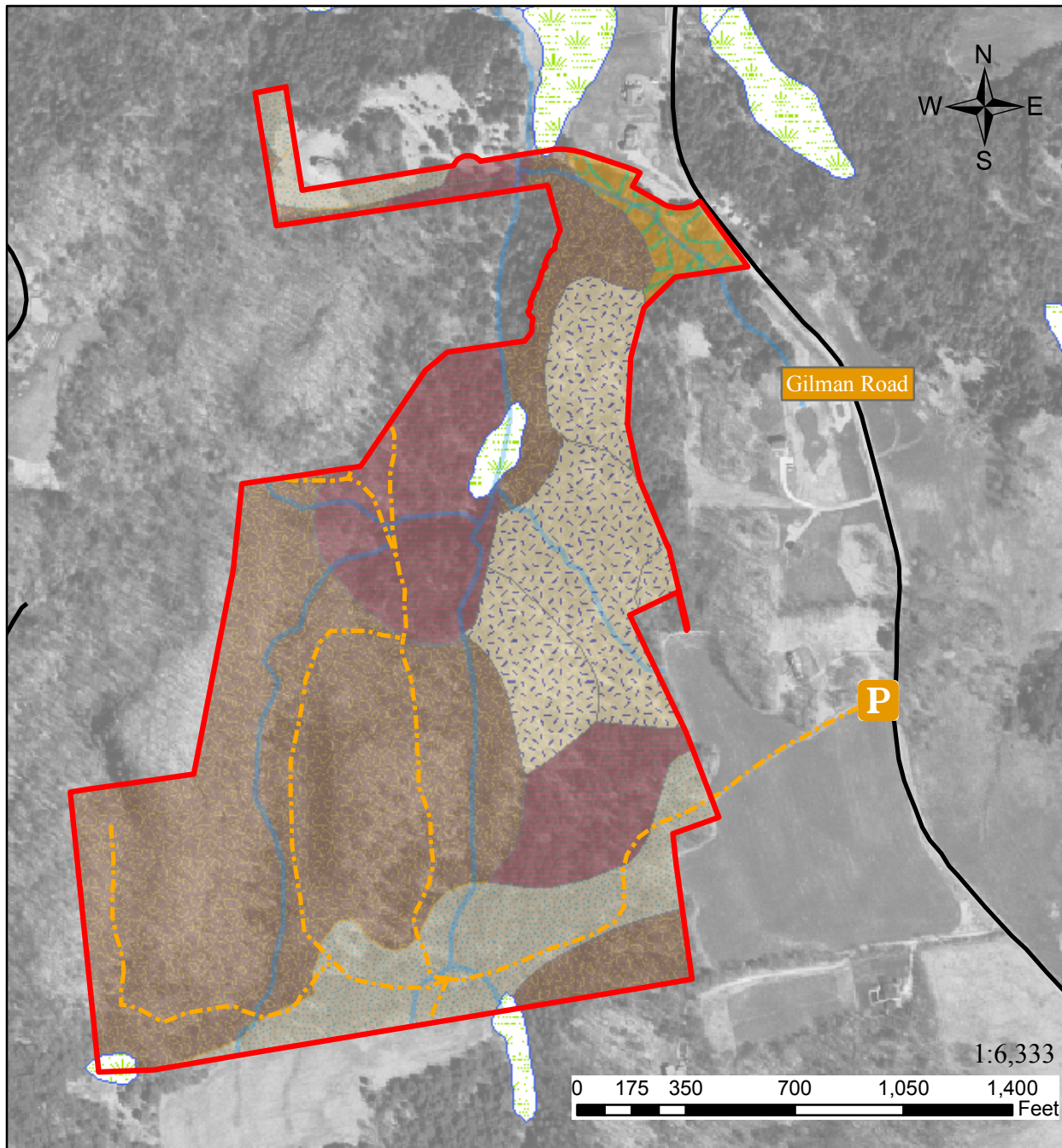


Soils

Map 4

Owl's Knoll on the Bissonette Farm
Hinesburg, Vermont
Summer 2006



Legend

Property Boundary

Parking

Trails

Roads

Streams

Wetlands

Soil Types

Stony Loam

Fine Sandy Loam

Silt Loam

Silt or Sandy Gravel Loam over Clay

Gravelly Fine Sandy Loam

Created by Kristen Sharpless
Field Naturalist, University of Vermont

All layers produced by Kristen Sharpless.
Vermont Center for Geographic Information,
and the Trust for Public Land