

TABLE-LONE COL

with Erik Schlimmer, 9/8/18

142-13

Previous hikes with Erik: Slide Mtn. Woodfems 8/15/15, pp. 161-42 ff
 Willowemoc Beaver Meadow 8/14/15, pp. 280-126 ff
 with Joan + Nan ~~White~~ ^{Burroughs} → West Settlement bogs 8/13/15, any field notes?

Earlier hikes on Table Mtn: 6/10/72 pp 142-1 ff, 6/15/84 pp 142-7 ff
 and 5/18/87 pp. 143-1 ff Elevations this hike from Erik's altimeter.

(A) 9:25 Trailhead
 in East Branch. ILEX MONT
 (B) 9:45 Tison log deck
 (C) 10:03 Log road to N
 (D) 10:05 Junction to Winnisook
 (E) 10:30 El. 2340'
 hike. Base of steep 240'
 pitch with YBs to 33" (F)
 E.P. # 104
 MK Calc. elev. from 2015
 is _____ feet.
 BEECH dominant with OX-LL-
 SINT

e.p. # 104

(G) 2610' Ledges, each with
 walk-in crevices to west
 2 dead firs, 1 down.
 NEMS still scatt. to
 30" + with repro
 1st SORBUS

(H) 2800' Lookout. Fir saplings
 1 NEMLOCK, DP

Erik 2810' 1st Knob 11:05
 (I) Few SUB-B-BC-RM-YB-LL
 Actual elev. 2860' USGS

Descent of 2860' knob.
 (J) 2 ASH. wide walk-
 through crevice light of
 trail with 90° bend.
 Erik 2780'.

(K) COL 2720' Erik
 11:15 2750' USGS
 30" SUB, + several
ASH, MITCH, B DOM,
 YB & BC above
 Then B dom at all
 levels in forest, to 18"

(L) 2760' Erik. Polygonatum

(M) 2960' Erik. 1st SCAMPYL

11:30 2nd
 Lookout off trail. 2960'
 (N) No herdpath to it.
 ILEX MONT, few SORBUS

(O) SUB, 24" BC, VA
 3080' ledgetop. 2 FIR
 Saplings. NEM Sapling

(P) 3rd Lookout 3150'
 Herdpath to it. Shown
 on Hiker's Map. AZALEA,
 NEMO, VACC ANG, RA,
 1st SM with involucres
 > 11" mm high = more
 like 16 to 17 mm.

(Q) 4th Lookout 3180'

(R) Knob 3270 Erik. 3280 USGS
 B-BC-YB-SCAMPYL

(RR) COL 3210 Erik, 3250' USGS
 B-YB-VA abun-RM-BC-
 SCAMPYL. 2 Mature fir +
 several scattered young.

(S) 3350' 12:35 Spring Junction.
 Spring in pipe with a trickle,
 ca. 100 ft off trail on north.

(T) 3460' Lean-to 12:40. Built
 1998. Memorial to Frank Barton,
 1919 to 1991, of ADK Ramapo
 Charter. Herd path maybe
 150 ft to south. No view.
 B-YB-BC-RA

(U) 3500' Sign. 12:50 PB dom.

(V) 3720'. Stunting. More Fir.
 1st PB

Erik 3790' 1:05 Canopy 35'
 (W) CONG. in ledges + boulders on
 TABLE Mtn Summit. 3847'
 Rock Cairn at highest point.
 On S side of Fir, hardware still
 visible where canister was hung.

(X) Blowdown pocket along Table Summit crest, S side. Maybe 1/10 acre. FIR repr dom with some PB & SORBS. Maybe from ca-2010? PB taking advantage of a FIR canopy gap

Turn off herd path & head down to NW, gently at first.

(OO) 3440' PB & FIR continue scrubby PB-VA-MO-SCAMPXL

Big HEMS & PBs to 30"±
HEMS 36", 33"

(EE) 3380' Begin a series of 10 to 20' ledges. FIR & a few PB

(VN) 2470' small landslide W side of brook

(FF) 3290' More SPRUCE FIR-PB-HEM 12"-PB-RM

(OO) East Branch 2330' Enk 2320' USGS Snack stop just below beaver dam. 4-30 to 4-43

(GG) 3120' PB becoming less common. SPR-FIR-PB Few HEMLOCK

(PP) On trail 5-12

(A) Out 6-00 Enk 2120' USGS 2140'

(HH) 3050' Lowest SPRUCE to 16" x 80"± PB rare. NO FIR

COLOR CODE:

- FIR
- SPRUCE
- PB
- ASH
- Other boreals: SORBUS, SCAMPXL
- HEMLOCK
- Topography & geology
- time
- SUGAR MAPLE

(II) 3000' HEM grove on E

(JJ) 2920'. Base of ledges, end SPRUCE-FIR. N-HOWDS dom. begins. Few SUB.

Common B. w/Br Donovan Brook available. STNT 3-35 PBs to 30"±

(KK) 2870'. Scatt. HEMS to 27". Ilex mont

(LL) 2780' Hemlock grove. Ilex mont. Grove wraps around spur & up E Br Donovan, too

* Shrub thicket needs further study, well developed and between forested areas just below FIR Summit Cap.

(MM) 2600' Enk - 2560' USGS DONOVAN FORK 4-00 Nil water in E Branch

See pp. 146-4 to 7 of 9/10/12

EAST END TABLE CREST

(Y) 1-40. Lunch. to 2:00+ FIR dominant. Herd path begins just NW of lookout, both well off trail & no distinct herd path junction AT trail.

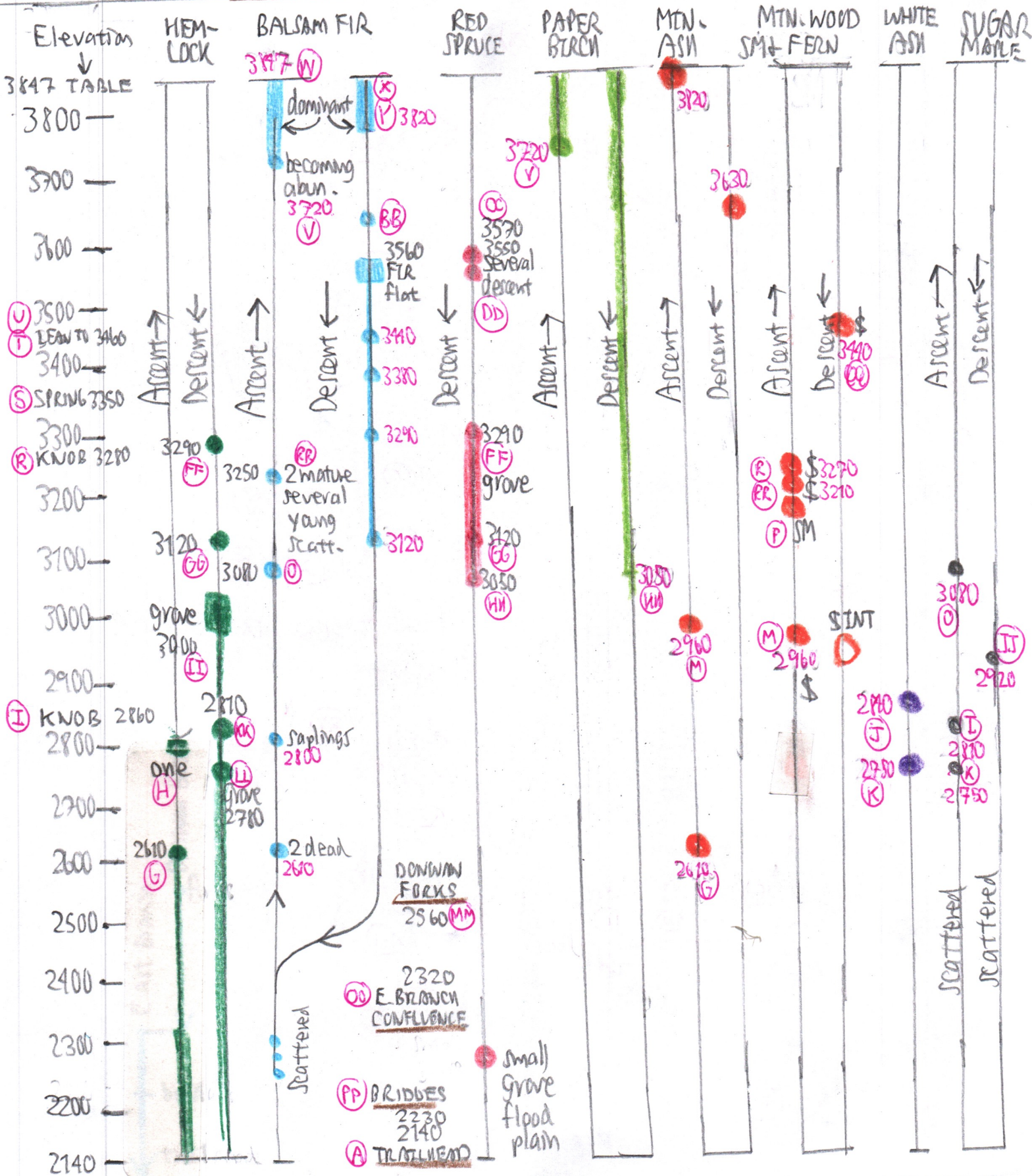
(Z) DESCENT OF TABLE:
3750' Enk. Out of FIR dominance & into shrub thicket*
3710' Stunted beech (AA)
3630' Mixed Fir-PB-PB-SORBS-VA (BB)
3570' SPRUCE sapling (CC) Common B. w/Br Donovan Brook available.
3550' FIR flat (USGS 3560) visible from lookout on Table Summit. FIR dom. on Fragmenting ledge often exposed. Open area with a few SPR, few PB, VCASS, COPTIS, VA, AW, RM, and a Carpet of Pleurozium

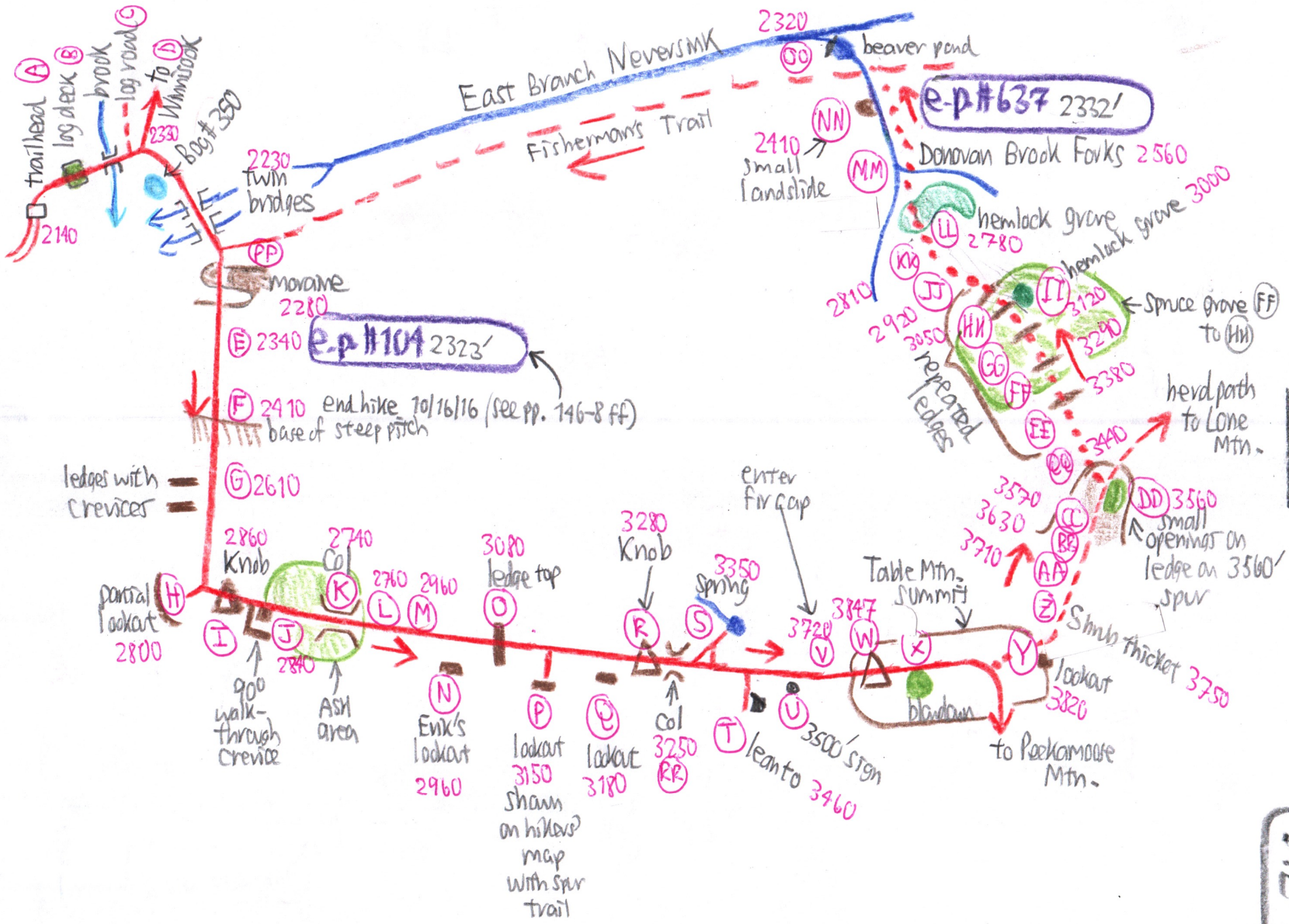
On herd path ↓

Elevation Diagram for Species Limits and Abundance

142-15

A = ascent D = descent





MAP

142-16