

MK solo  
7/31/16

# Mountain Laurel on Murphy Hill South Slopes

411-117

411-117

Site	p	$\Delta p$	$\Delta e$	e calc	e map	time	R
(A) Pepacton Cemetery	29.76	0.00	$R_1 = 1.103$		1690'	10:00	$R_1 = \frac{2440' - 1690'}{29.76 - 29.08} = \frac{750'}{0.68} = 1.103$
(B) Col north of roadcut	29.63	0.13	143	1833'	1860'	10:27	
(C) NE cor 1st Klat thicket	29.69	0.07	77	1767		10:40	
(D) Sw cor 1st Klat thicket	29.70	0.06	66	1756		11:00	
(B) return to col	29.63	0.13	143	1833'	1860'	11:22	
(E) 2nd Klat thicket	29.60	0.16	176	1866	1950'	11:30	
(F) road ends	29.46	0.30	331	2021		11:45 to 11:50	
(G) lunch; follow blaze 3rd Klat	29.46	0.30	331	2021		11:55 to 12:10	
(H) trail ends at blaze corner	29.23	0.53	585	2275		12:25	
(I) end 3rd Klat thicket	29.19	0.57	629	2319			
(J) on log road	29.16	0.60	662	2352		12:40	
(K) four corners in col	29.12	0.64	706	2396	2420'	12:50	
(L) Knob	29.10	0.66	728	2418	2430'	1:00	
(M) Summit 2440'	29.08	0.68	750	2440 ✓	2440 ✓	1:15	$R_2 = \frac{2440' - 1690'}{29.71 - 29.08} = \frac{750'}{0.63} = 1.190$
	29.08	0.63	750	2440 ✓	2440'		
(N) log road on E shoulder	29.17	0.54	643	2333		1:30	
(O) corner SW blaze; snack	29.18	0.53	631	2321	2330'?	1:38 to 1:45	
(P) end 4th Klat thicket	29.20	0.51	607	2297		1:55	
(Q) start gently down HEMS	29.24	0.47	559	2249		2:10	
(R) Orange DEP pipe	29.27	0.44	524	2214		2:19	
(S) Summit 2187'	29.30	0.41	488	2178	2187'	2:33	
(T) white oak lone	29.50	0.21	250	1940		3:00	
(A) Pepacton Cemetery	29.71	0.00	$R_2 = 1.190$		1690'	3:23	

Anso barometer carried for less weight. 100ft tape carried but not used.

Mileage - 21.3 miles to Pepacton Cemetery. On return, 21.7 is old town road (17.9  
24.5 mi Delaware County Route 1. 42.4 miles round trip from 2870.

# Vegetation (except mtn-laurel detail)

41-118

1670' to 1860'

**A** to **B** Oaks abundant along N City Route (30A) both sides E of Pevacton Cemetery. Turn N on log road at 0.4 mile (where Seth parked on 7/17/'09; see p. 411-41). Enter hemlock forest, then open fields both sides. Re-enter woods with stone walls along old town road to south.

**B** 1860' 1st Klat grove within sight of col. ASH-RM-BC-NEM-EWI PINE-SUB-CRAT-CYPRIPEDIUM (see p. \_\_\_\_\_ for Klat)

Return to **B** after looping around 1st Klat grove. Posted road & wall up (D.J. Wright) past Wigwam camp to Mt Cabin in mowed field. Cross wire gate & enter 2nd Klat grove under OAK & RM. Then scatt. Klat plants. Stumps 10 to 20y and large DP openings.

**F** Road ends. Narrow overgrown 2021' foot trail turns east. Backtrack to **F**

**G** 2021' Follow SNY blaze N lunch at Adiantum. Above in sight is base of 3rd Klat grove.

2021' to 2235'

**G** to **H** Klat 3rd grove under OAK, YB, RM, few ASH. Foot trail climbs steeply NE over 5' ledge.

Two Chestnuts 2" x 12' ~~GAULTHERIA~~  
VACC, VACC (NB)

**H** 2235' Trail ends at yellow paint on rocks. Blaze turns E from NE here. Looking back, trail descends 2080 mag = 195° true. Metal deer stand.

**I** 2319' Klat 3rd grove ends. 3rd Chestnut. OAKs continue.

**J** 2332' On log road heading for col. Summit 2473 above. OAK & RB yielding to B. 20y stumps. Semi-open DP glade

**K** 2420' 4 corners col. Log roads overgrown (see pp. 411-311-40 of 4/17/'09).

30" SUB at NW cor. of junction. OAK-sub-BC to 70ft with B-MO understory.

**L** 2430' Knob with SUB defoliation. Open DP-RS-RA-Pcili-YB repro. Reynor BCs standing. YB ASH down on road. Log road soon turns off crest heads down to SE 1:07.

**M** 2440' Summit 2440'. Two DEP bolts with triple

orange flagging. Fagami Club. → DEP to E. Blaze runs down to NW & N. ASH on highest point. BC-OAK-OST-ASH-RM CALEOPTIS, 30y stumps. More open areas with DP. Re-enter woods 1:20. Start descending following sun 1:25. Large OAKs with B-MO beneath.

**N** 2333' On log road (obscure) on E shoulder for a short distance. Vacc avg. Lose road on flat

**O** 2330 Bend in SNY blaze at mid-ledge. Snack. OAK AA- Chestnut sprout. Fagami on W, SNY on E. Follow blaze down to S.

4th Klat small poplars on flat below. Deerstand on blaze. VACC NB, AMEL, RBEST CYNOS. Corner on next flat down. SNY line bends left about 25°.

**P** 2297' 1st NEM. Small Klat 4th poplars. Blaze up & down ledge on W edge of crest.

Twin Ashm-of Downville owns to W.

# Vegetation, continued

- Q 2241' Start gently down & then long level with HEM common.
- R DEP orange tall pipe. Red blaze heads S with DEP on E. 2241'  
2-25 Hem grove with OAK litter.  
2-30 Adj. DEP blaze
- S 2187' Up 20' ledge, overhanging to Summit 2187'. BB (?) thickets. ASH. Carex abundant. Descend the same 20' ledge 2-41.  
Top of steeper descent with Balthusia, Vacc, HEM groves.
- T 1940' White oak, lone, 224' with only 3 lvs found in litter. N-red oak with Chestnut oak bark. VACER. OAK dom.
- 17:10' Return to Route 30A N City Road 3-15 at storm drain, at E end of large grassy opening.  
3' tall Anemone at next drain. DEP on N side of highway.

# K-lat. Thickets detail

GROVE EAST OF RANGER ROAD, off Route 30, 0.1 mile W of junction of 281 30 in Dunraven. 7 plants on N side of 30 between Ranger Road driveway #37611 and unmarked road to E at #37111. This part the 1st rock cut on 30 around the bend.  
OAK-VACC-BB. Powerline to N. 8.1 mi from 2810

GROVE EAST OF BUSHNELL RD. N bank of 30

## Murphy Hill Thicket

BCD  
1st. 400 MK paces long on east side. 285 paces wide along S end. 365 paces to NW corner along Wedge. 135 more paces to return to col B at N end.

If one MK pace is 1.75 feet (see p. 411-120) then this popln. is about  $\frac{400+365}{2} \times 1.75$  ft long

$$382.5 \times 1.75 = 669 \text{ ft long}$$

$$\text{by } 285 \times 1.75 \text{ ft wide} = 499 \text{ ft.}$$

$$= 333,831 \text{ sq ft}$$

$$= 7.66 \text{ acres}$$

$$1 \text{ acre} = 43,560 \text{ ft}^2$$

411-119

What is unusual about the 1st grove is that the NE corner is OAK-free. Klat occurs under a sub-climax of RM-BC-ASH-ELM PINE, CRAT, with some B, SUB here. Dead under the hemlock groves. ∴ gaps in the popln.

Height: 2 1/2 to 2 2/3 hiking poles high. One plant 3 poles high = 51 x 3 = 153 inches ≈ 13 feet.

Diameters: 2 1/2" max live, 3 1/2" dead, at ground level.

Growth rate of twigs: 2 to 4 1/4" year. At 3" year, to reach 13 feet would take 13 x 4 = 52 years. Are the plants this young?

Estimated ages, all thickets growing at about 3" / year, 1/4 ft:

#1 Radius  $\frac{669}{2} = 335 \text{ ft}$  median  $\frac{499}{2} = 250 \text{ ft}$  } 293 ft.

1172 years } 7.66 acres

#2 Radius 257 ft.

1028 years } 4.75 acres

#3 Radius 380 ft.

1520 years } 10.91 acres

#4 Radius 75 ft.

300 years } 0.406 acre

0.406 acre

# Murphy Hill Thicket #2

205 paces long along **E**  
 log road, extending  
 largely to east. Using  
 MK's full stride along a  
 road, thicket is  $205 \times$   
 $+ 2.5 = 513$  ft long  
 Width unknown. If  
 thicket is a circle 513 ft  
 indiameter it covers  
4.75 acres.

$$\pi \left( \frac{513}{2} \right)^2 = 3.1416 \times 206613 \text{ sq. ft.}$$

# Murphy Hill #3

From **G** to **H** is 370  
 paces up steeply. Allow  
 1.75 feet/mk paces\*  
 Above **H**, thicket  
 continues on W only up  
 to **I**

Another way to  
 estimate thicket size is  
 to measure the distance  
 on the USGS beach  
 Quad - from elev. 2021  
 $+ 79 = 2040$  at base of  
**G** thicket to elev. 2319  
**I** at top of thicket.  
 This is a span of 280  
 feet in elevation,  
 requiring 1100 feet of  
 horizontal distance

= 14 mm on map

# paces <b>G</b>	0	3rd chertmt betw. <b>H</b> & <b>I</b>
5' ledge	200	
2 chertmts	290	
<b>H</b>	370	

$$370 \text{ paces} = 648 \text{ ft} = \frac{? \text{ paces}}{\text{elev } \text{G} \text{ to } \text{H} \quad 2021 \text{ to } 2275} = \frac{? \text{ paces}}{\text{elev } \text{H} \text{ to } \text{I} \quad 2275 \text{ to } 2319}$$

$$\frac{648 \text{ ft}}{254 \text{ ft up}} = \frac{? \text{ ft.}}{44 \text{ ft up}} \quad ? = 112 \text{ ft}$$

Add  $648 + 112 = 760$  ft thicket  
 diameter.

$$\text{Acres} = \pi \left( \frac{760}{2} \right)^2 = 453647 \text{ sq. ft.} = 10.41 \text{ acres}$$

# Murphy Hill #4

Between **O** & **P**, this is a  
 small population only 75 paces  
 long along a blaze. Plants  
 short, max. 6 ft. Scattered  
 plants below on W shoulder  
 of ridge. May be more  
 below according to Tom Clark,  
 but not visible in summer.

A 75 pace diameter circle  
 Thicket is  $\pi \left( \frac{75 \times 2}{2} \right)^2 = 17672$   
 Allow 2 ft/pace = 0.406 acre

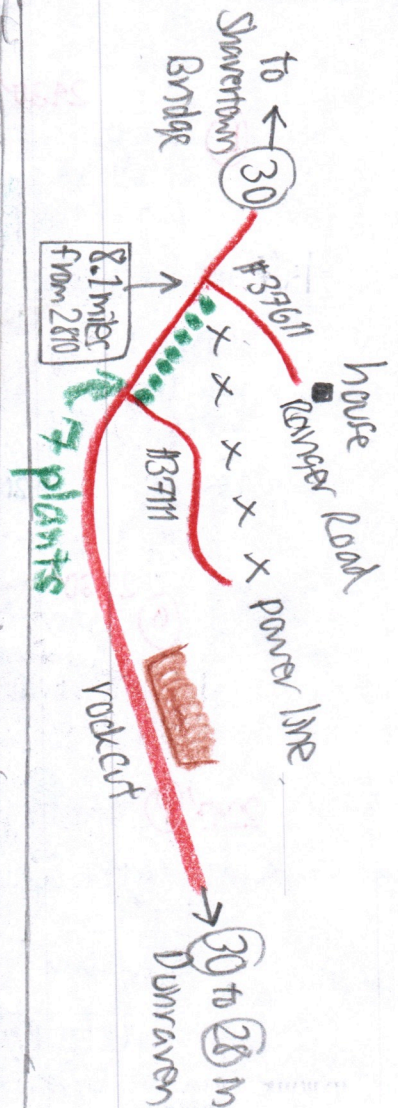
\*MK paces on a steep slope,  
 measured behind 2810  
 along Funari boundary trail  
 with 100 ft. tape:

57 paces, measured 2x, up  
 Same down, even 59 p.

$$57 \text{ paces} / 100 \text{ ft} = 1.75 \text{ ft/pace} = 1 \text{ step}$$

411-120

Ranger Road Population =



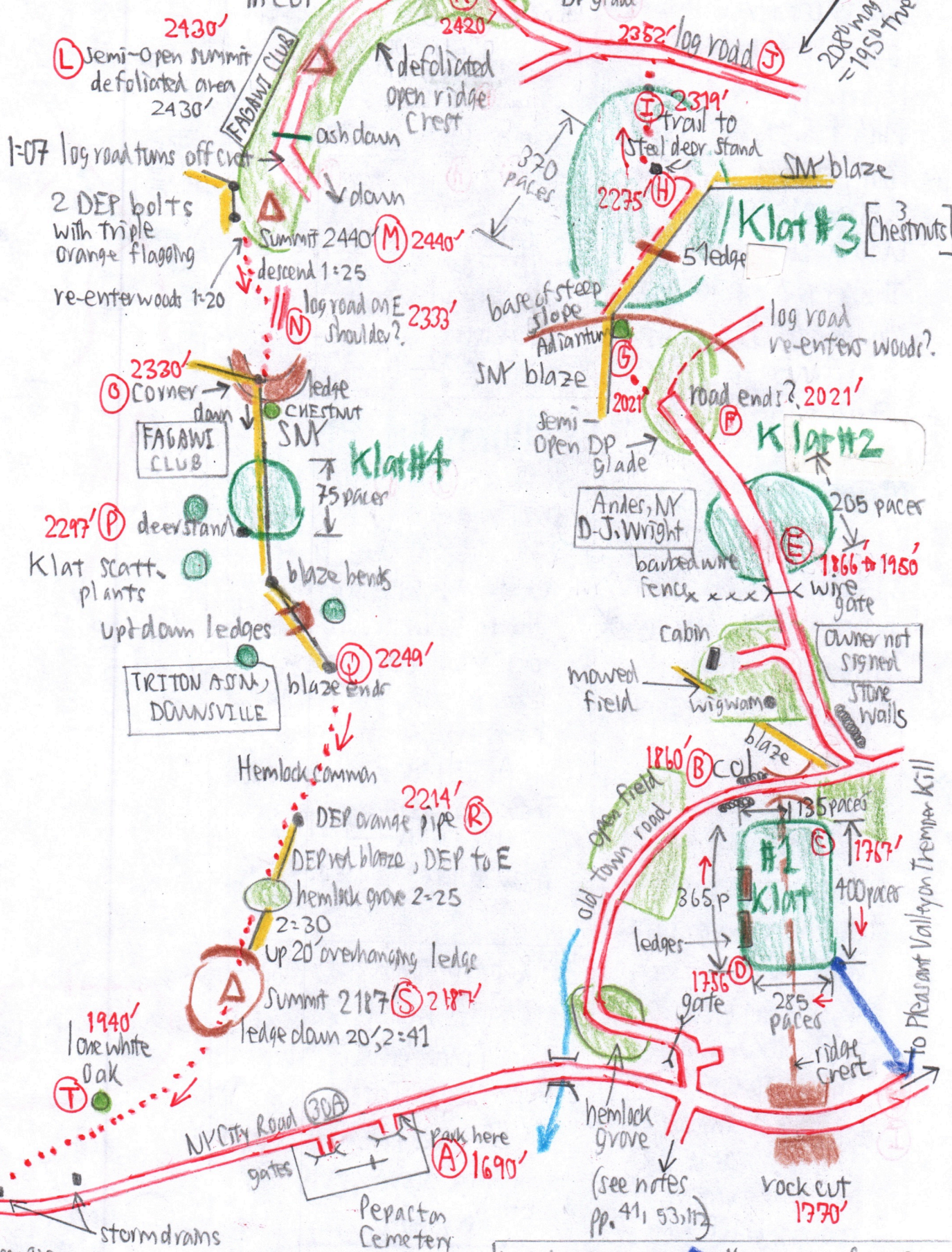
Bum index **6**

- OAK
- KLIT
- CHERTMT
- VACER
- BB
- SAUTHERIA

# MAP

411-121

See notes pp. 4 Corners in col 30" SUB to Summit 2473



Dark blue arrow → Hwy. visible from SE Corner of Klat #1 at a distance of ca. 600 ft.