

Trout Pond Trail-North End

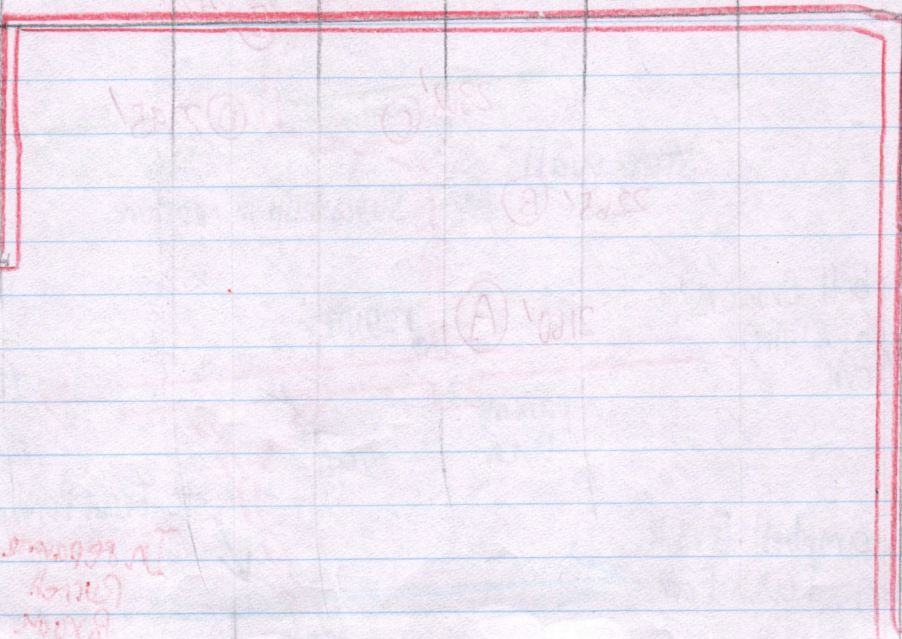
between branches of Campbell Brook

11/7/09
Allan Strong
Fred Reckner

442-37

SITE	P	Δp	Δe	e calc	e map	time	R
(A) South fork trail head	29-30	0-00	—	2160'	2160'	2-50	$\frac{2526' - 2160'}{29-30 - 28-88''} = \frac{366'}{0.42''} = 0.871 R_1$
(B) Stonewall on W	29-18	0-12	105	2265'			
(C) road turns E	29-13	0-17	148	2308'			
(D) road turns N *	29-03	0-27	235	2395'			
(E) road turns NW	29-00	0-30	261	2421'			
(F) on cliff of ridge	28-88	0-42	366	2526'	2526'	3:15	$\frac{2526' - 2160'}{29-29 - 28-48''} = \frac{349'}{0.39''} = R_2 = 0.895$
(G) start down	28-88	0-39	349	2526'	2526'	3:20	
(H) NW spur flat	29-10	0-17	152	2329'			
(I) turn E on level	29-19	0-08	72	2249'			
(J) Quamy	29-32	0-05	45	2132'			
(K) bridge	29-38	-0-11	-98	2079'			
(L) Klat	29-34	-0-07	-63	2114'			
(M) North Fork trail head	29-27	0-00	—	—	2172'	4:02	
(A) South fork trail head	29-28	—	—	—	2160'	↓ via vehicle	

* pastures end above here but not carefully obs.



Handwritten notes in red ink at the bottom of the page, possibly related to the diagram or data.

(F) BC dominant. B, SUB to 60' or 70'. Max BC dbh 24"

(G) B-SUB-RA

(H) RA abun + Perli
SUB-ASH-BAS to 70'
Some BC

(I) ASH freshly cut to clear trail. 6' up 12" diam, 87y. #39

(J) Quarry just below where trail begins descent from long level. About 60' long x 10' high. 28" SUB adjacent

(K) L MM, AMEL, RM Plantations could be CCC? K Lat

