

No
Barometer
Carried

South Peak
Murphy Hill State Forest

SOUTH
PEAK

4/17/09

413

Mileage from 2810*	0.0	43.1
		35.6 (28130)
Jc (30) & 1, Shavertown Bridge	16.2	27.6
RR river out of reservoir	16.6	27.3
(1) & (30A) Junc.	18.7	25.2
(30A) Shaver Hollow Rd (A)	19.9	23.9
Shaver Hollow & Rich Rds. (B)	22.0	22.0
extensive hemlock grove		23.5
* via Arkville P.O., adding an extra 0.5 mile	↓ read down	↑ read up

Forest history:

Stumps throughout. Estimate 20y±
or 1990. Many are oak.

One 20" ASH cut 130y, cut 1915?
established ∴ 1860s. Tree #19

The 2473Δ summit was less
intensely cut over than the 2440.

Ground Cover sparse

(E) 1st Claytonia of the season in fl.
along FM-Maxwell line (see map) →
Pcils, DP abun on Δ2440. Some RA-
IMP (??) seedlings
Ery in leaf only on 2473Δ.
\$ int on 2473Δ
Lycob obs near Claytonia

Ptilidium pulcherrimum on a
20y± oak stump on Δ2473'.

Kalmia latifolia along
N side of Reservoir: native? (Yes)

outband ↓	27.6 (30) & 1 at Shavertown Bridge	} all plants on N side of (30)	8.0
	Perch Lake Rd.		
	29.9 Klat		5.7
	Bushkill Rd		
	31.6 Klat		4.0
	Dingle Hill Rd		2.6
	33.0 J-communis		0.0
	35.6 (30) & 28		mileage reversed

Soils on 2440' summit
and ridge NE of it:
from blowdown "pancakes"

(G) ASH 30" pit from windthrow, no ledge visible
(NOTED) Ochrept about 40% to 50% stone, est.
RM (D) 28" thick cake, also 40% to 50% stone.

Canopy height: 55' on Δ2440'
60' in col
60' on Δ2473

Dominant trees:

- OST
- OAK
- ASH
- BC
- SUG
- RM
- MO
- few B
- 1 YB
- KEM grave on NW shoulder of
Δ2473'.
- HAMAM

Burn
index (1)

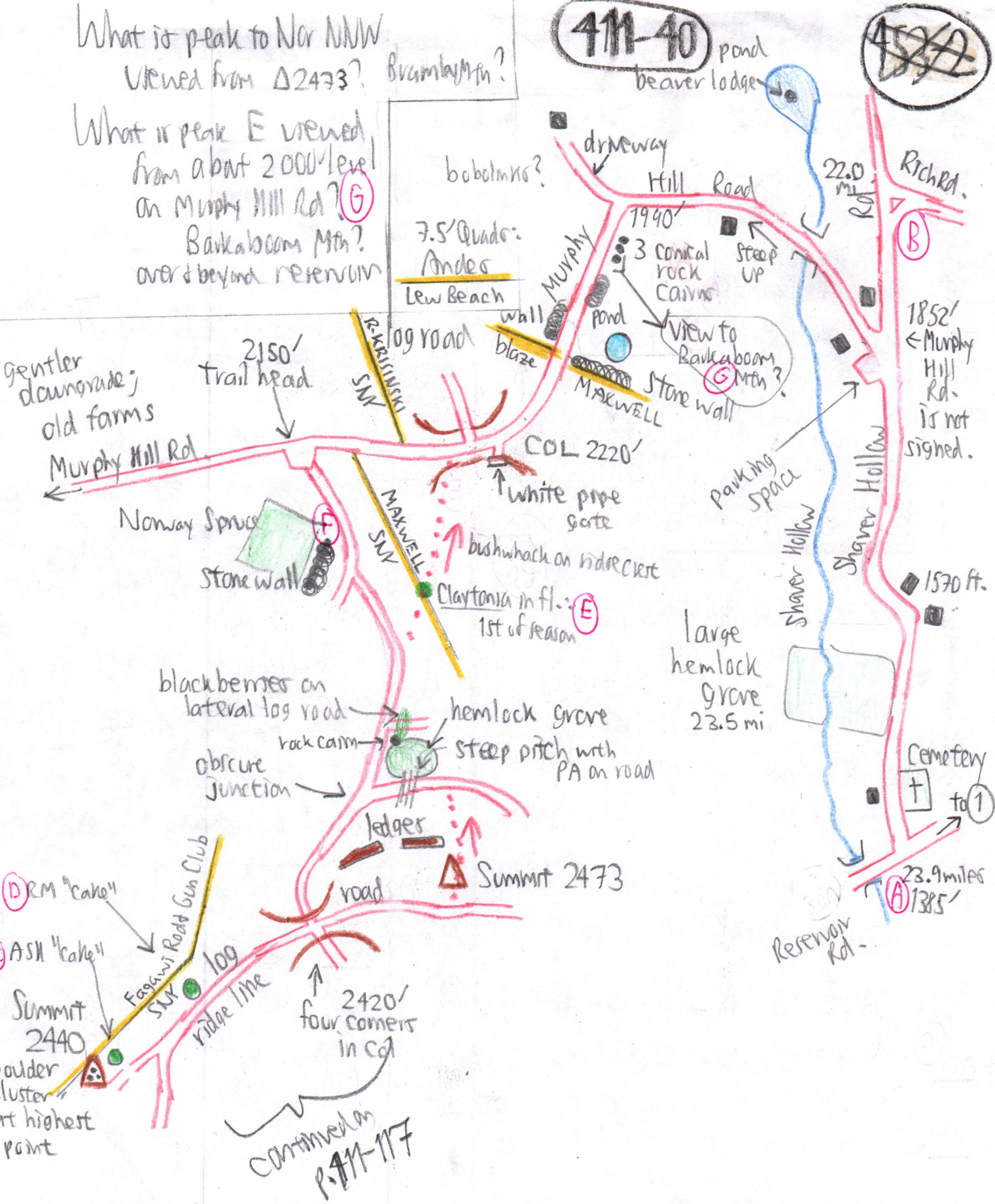
Stone wall
& Norway (F)
Spruce a short
distance above
trailhead on
Murphy Hill Rd.

What is peak to Nor NW
Viewed from Δ2473? Brumby Mtn?

What is peak E viewed
from about 2000' level
on Murphy Hill Rd? (G)
Barkaboom Mtn?
over & beyond reservoir

411-40 pond
beaver lodge

~~453/2~~



continued on
p. 117-117