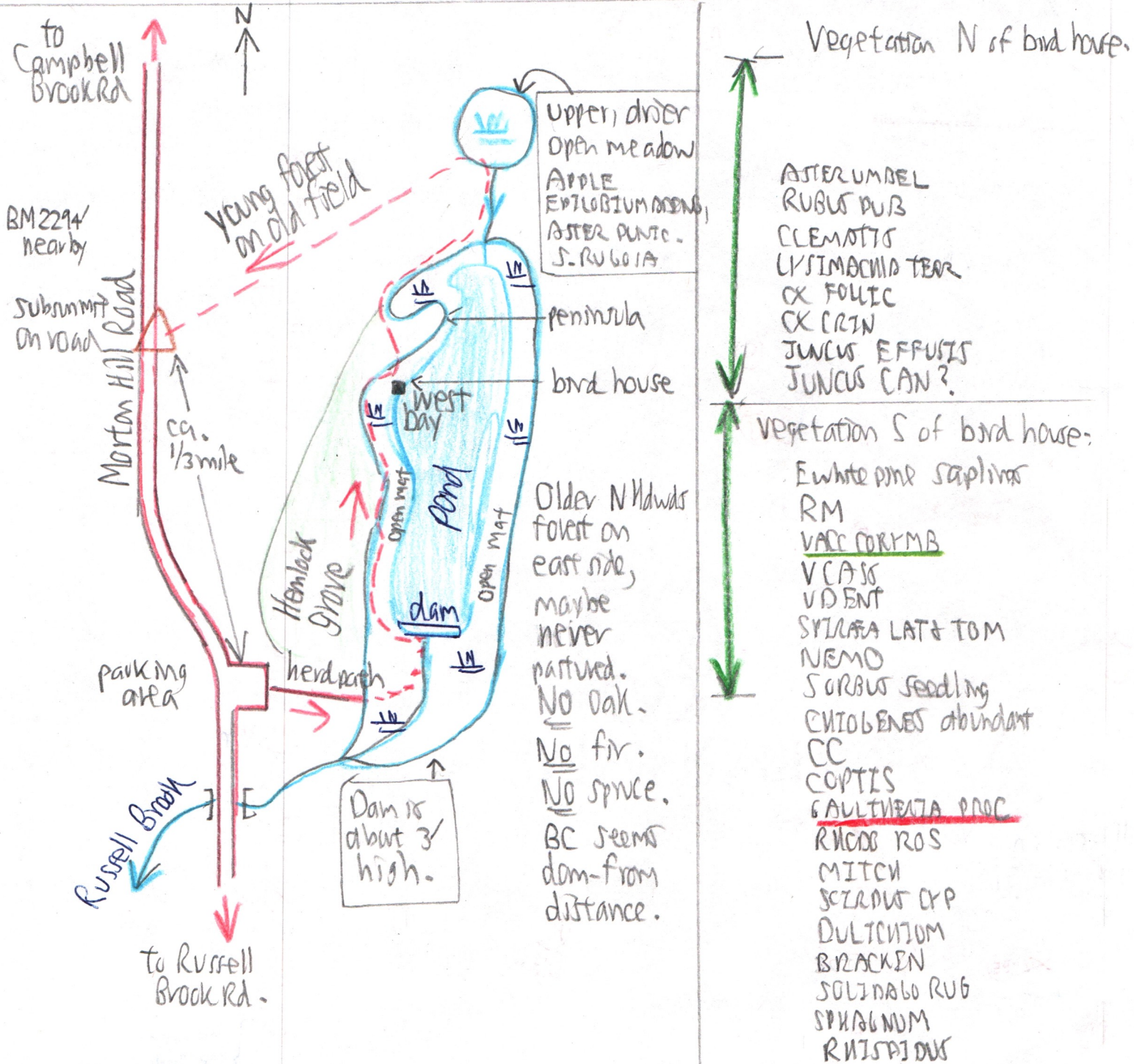


Beaver Meadow at head of Russell Brook 442-33

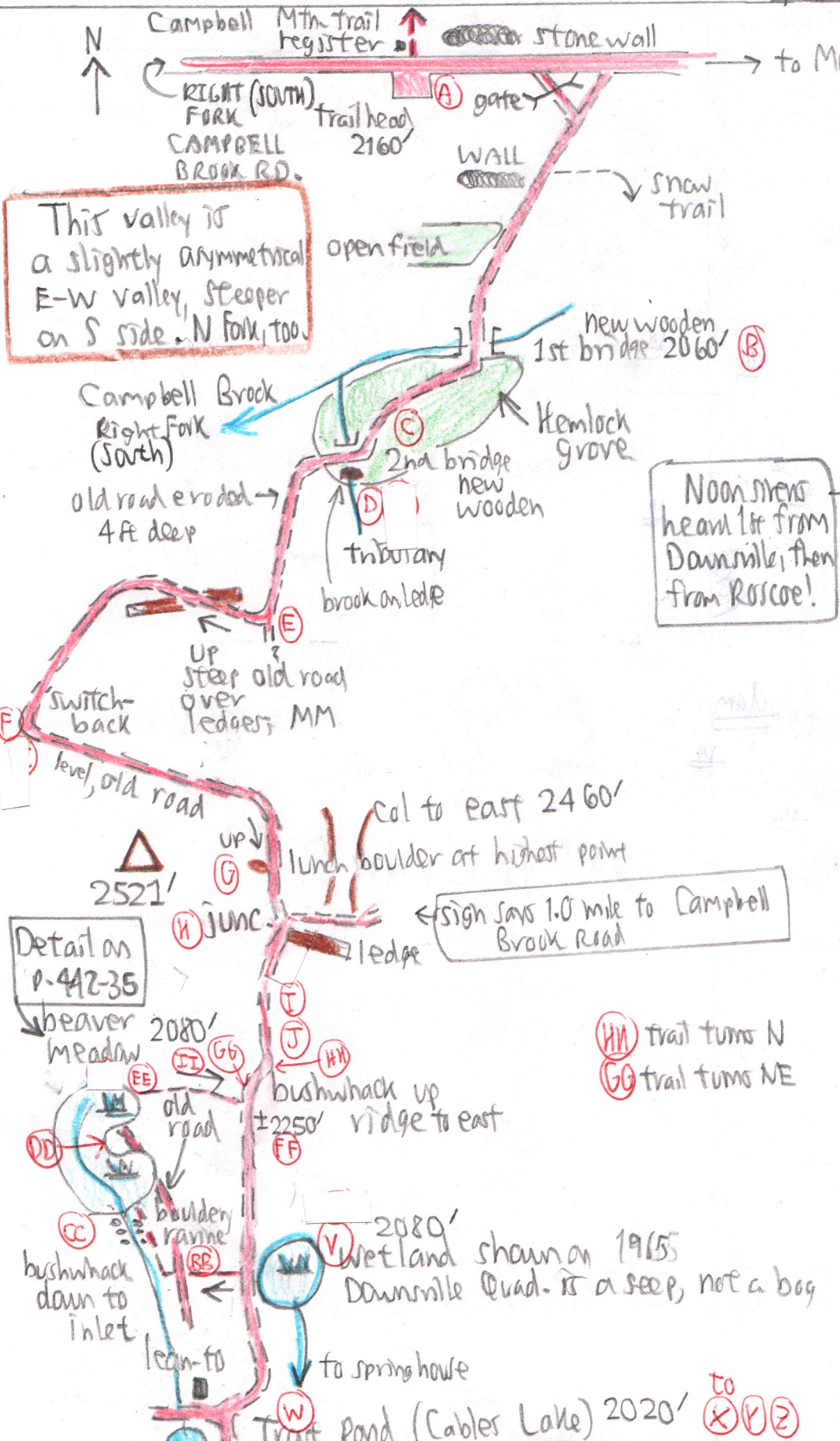
10/21/09. Nowhere has peat accumulated to a depth warranting a sampling: 8" max - at N end. Elevation rate - - - - about 1 hour to explore.



This shows up as a wetland, not a pond, on the 1965 Downsview Quad.
A beaver POND appears on the Hikerr's & Outdoor Ventures' maps.

Troat Pond Trail between Campbell Brook and Troat Pond, 10/21/09, continued from 5/14/09.

442-34



This valley is a slightly asymmetrical E-W valley, steeper on S side. N fork, too.

Noon snows heard 1/2 mile from Downmile, then from Roscoe!

No barometer carried

Hiking times

(A)	11:23 AM	3:09
(B)	11:30	3:02
(C)	11:34	2:57 } 1st sun all day!
(D)	11:36	
(E)	11:39	2:42
(F)	11:50	
(G) Summit	11:55	2:33 } 2:29 }
	12:09	
(H) Junc.	12:10	2:28
(I)	12:15	
(J)	12:23	± 2:21
(KN)		
(GG)		2:20
(FF)		2:19
(V) Seep	12:25	1:11 to 1:29
(W) lean to	12:29	1:07
(Z)		1:05
(Y)		1:04
(X) dam	12:41	→ 12:55
(V) Seep		1:11
(BB)		1:29
(CC) } beaver meadow		1:38
(DD) } beaver meadow		1:53
(EE) leave III		2:07
(FF) on trail		2:16 on crest 2:19

(KN) trail turns N
(GG) trail turns NE

to (X) (Y) (Z)

10/21/09 Detail: Trout Pond Trail + Vegetation

442-35

(C) Old Hemlock grave. Trees to 33". Needs age determination. May have escaped tanners, although hardwoods are 20.

One 12" dbh NEM broken off 6' up near bridge (B) was growing at 2mm/y in radius. Estimated

age 6' up = 75y. At same rate, a 33" NEM could be $\frac{33/2}{12/2} = \frac{16.5}{6} \times 75 = 2.75 \times 75y = 213y$

Two BB in NEM grave

30y Stump MM on ledge above (E)

(F) Many 30 to 40y stumps. Must have been logged before SNK acquisition in _____. N hwdrs. MO common. AA, DP. NO Campyl \$ seen all day!

(G) Col. Canopy 70 to 75'. BC to 24" OX - \$INT - LL - RA. few SUB. BC + B dom. Some YB + RM

(GG) (HM) Move 40y stumps.

(FF) Return to trail at a triple-trunk BC on W side, 14" dbh. 4 trunks just SW of it.

(I) ASH

(J) VA. Rhamnus frangula Slope steepers down to S

(V) This wetland is shown on 1965 Downslope Quad. Maybe 2 acres. It is a rich seep, not a fen, with three BASS clumps + WHITE ASH. RM dom.

YB ONOCLEA, PA
SUB MATEVUCIA
CARP DREPANOCLODUS
TMCNT BAZZ
EUP GLYCYSTIA NERV.
LAP

RAMUNC overgrown SEPTENT?
CHRYSOSPLENUM
VERONICA? TIAR
SOLID LOT + RUB URDRO
GALUM TICIFLORUM \$INT
ADIONTUM near trail D GOLD

Seep is locally bouldery, generally only 4" to Chaxners. Deepest probe is at SW end in ONOCLEA, near trail, at 9". Not a peatland deep enough for a sample. Till on 'cakes is gray, not red.

(BB) 40y stump and old (Treyz?) haul road about 20' above Trout Pond inlet.

(CC) Inlet descends steeply about 40' in very bouldery ravine from

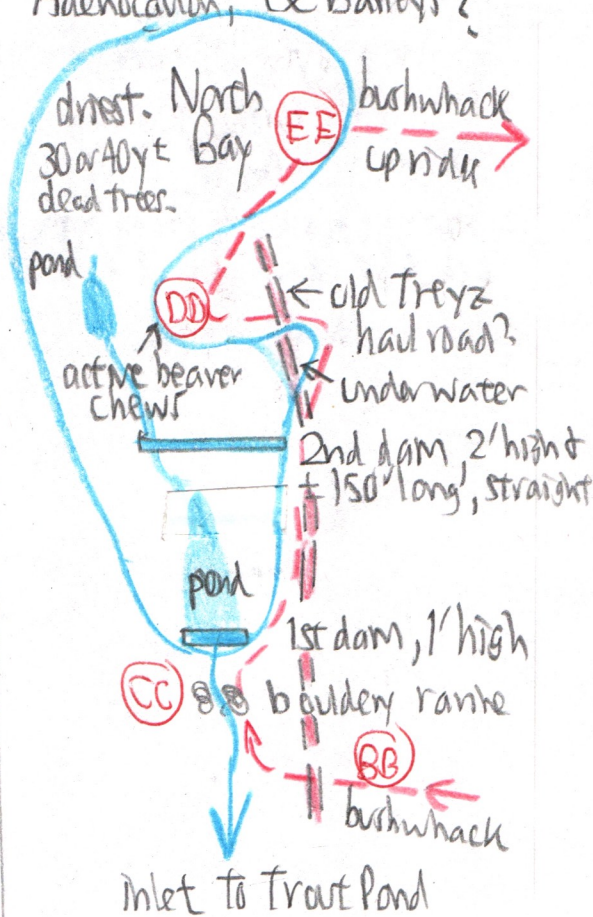
beaver meadow above.

Between 2 dams -
Ilex vert + C. roseovata dom.
Calamagrostis
EUP MAC, S RUB,
10 small NEMS

Above 2nd dam:
AZALEA, V. CASS, VA

North Bay has been potential for a peat sample: 10" to 12" near edge

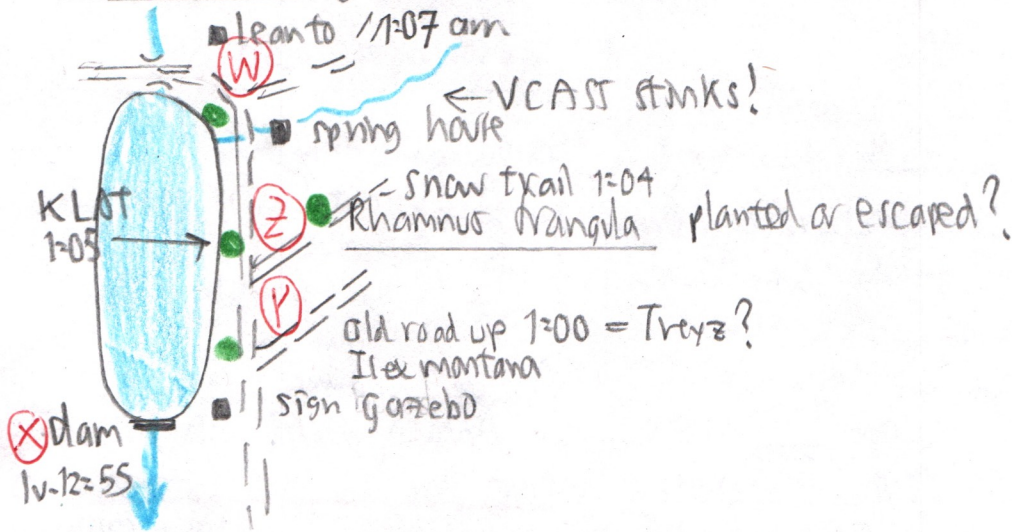
S. Gramin rug, Chixenes, Rhizop, Calamagrostis, Scirpus cyp., Adenocaulon, Cx baileyi?



Inlet to Trout Pond

Trout Pond (= Cables Lake)

442-36



Dam is about 10' high, built of flat SS boulders with a concrete spillway. Only a drip over it now. Debris of sticks above dam.

KLOT is only along pond shore. Planted? No where else in area except shore of Mud Pond (see p.).