

Barkaboom Mtn:

1°

441-11

a reevaluation of 2°+1° interpretation of 5/25/87 field notes (p. 441-1) based on notes of 5/22/02 & 5/30/09 done 5/31/09 ~~done~~ 6/29/02

West slope of ^{north} west peak, 3000':

- (F) 2822 has common ASH
- (D) 2662 has dominant OAK } 2°
- (H) 3000' only one ASH on W peak. prob. 1°

∴ entry point # 81 is at (G) 2970' in 1987 on p. 441-1

On 5/30/09, p. 441-19 ff, e-p #81 is at 2869 ft. (H) at top MM-SORB ledge

Area:
 1.25 miles long
 x 1/3 mi. wide
 on the average
 = 0.42
 sq miles

0.2
 0.4
 0.2
 0.6
 0.2
 5/1.6 = 0.3

Ridge line from west^(H) to east^(N) peaks seems 1° in 1987

East approach from Cross Mtn Rd: 2002 p-p 441-9+10 elev. 2856' (DD) ep#80
2009 pp 441-19 ff elev. 2790' (U)

S. West slope of middle peak, 3040' 1987 pp. 441-1 ff

- (KK) one dead ash, 2915'
- (O) has SORB, prob. 1° 2877'

(P) ASH at 2857'

(Q) OAK at 2857'

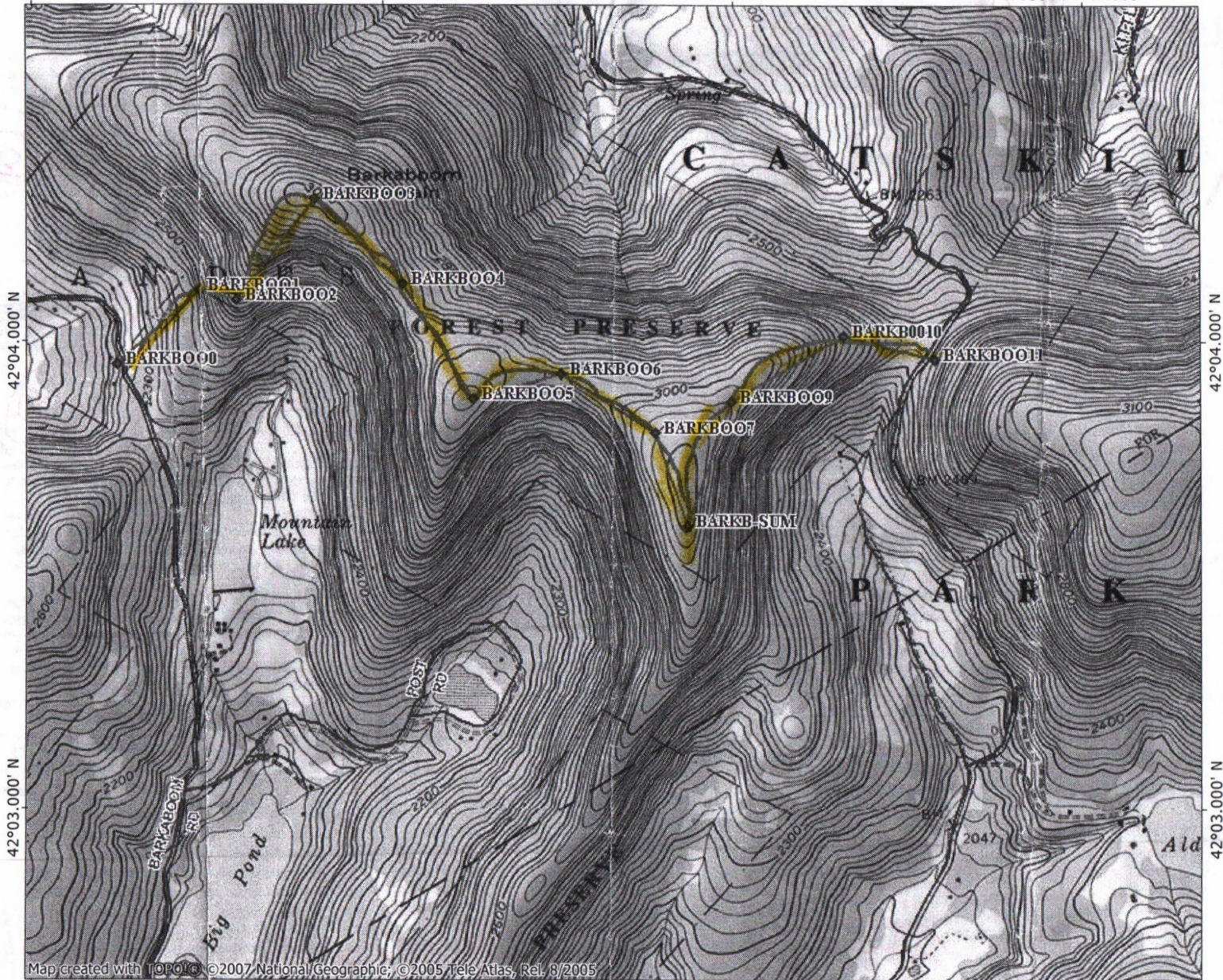
∴ entry point # 87 between (P) & (Q) at 2867'

South spur at blaze, 5/30/09, pp. 441-19 ff, elev. 3030'

e-p #590

TOPO! map printed on 05/28/09 from "Barkaboom traverse route2.tpo"

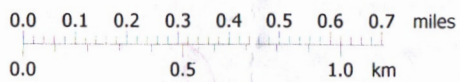
74°44.000' W 74°43.000' W 74°42.000' W WGS84 74°41.000' W



Map created with TOPO! ©2007 National Geographic, ©2005 Tele Atlas, Rel. 8/2005

74°44.000' W 74°43.000' W 74°42.000' W WGS84 74°41.000' W MN * TN

NATIONAL GEOGRAPHIC



13°

05/28/09

44-11A

From Alan Via 5/30/09

From Alan Via 5/30/09