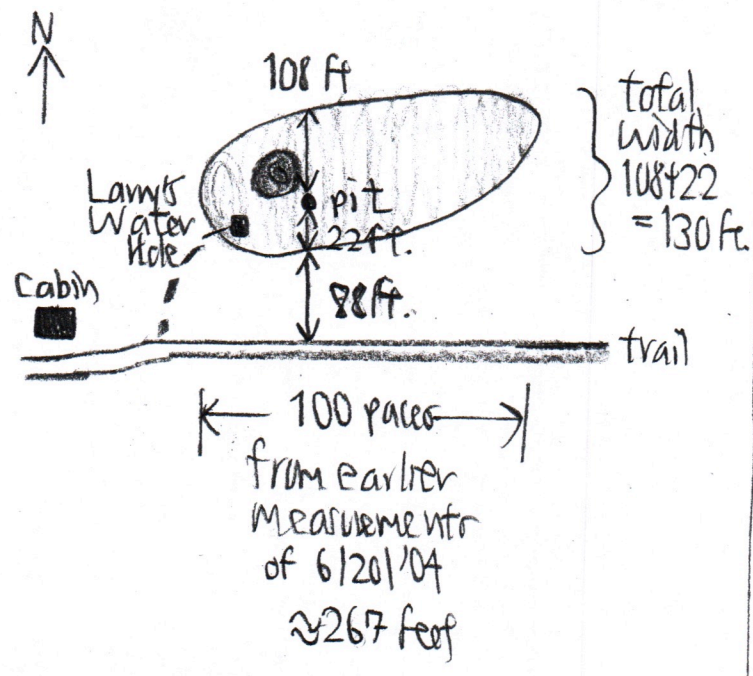


264-1 264-1
 More observations on Balsam Lake Mtn. 11/18/09
 with Lisa Lyons* BLMtn file

Bog oxygen		
	mg/L	fill rate
#301	0.40 at 4.9°C	14" pit filled to 3" = 11" in 30 minutes or 2.7 minutes/inch
#355 Lamy's	0.25 at 4.7°C	17" pit filled to 5" = 12" in 40 minutes while the bog width was measured 3.3 minutes/inch
#387 SE of summit	0.25 at 5.5°C	17" pit to 8" = 9" in 8 minutes 0.9 minutes/inch

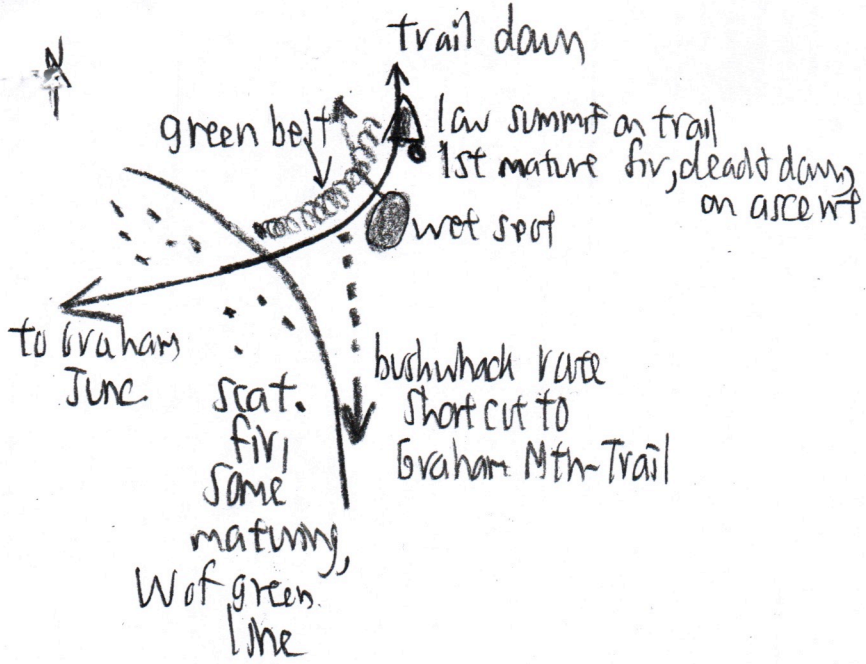
* Lisa invented a technique for filling a "drier" pit more rapidly with ground water. Gently jump up and down or press down w/ feet on Sphagnum mat around the pit. Water is forced more rapidly into the pit.

Area of #355:



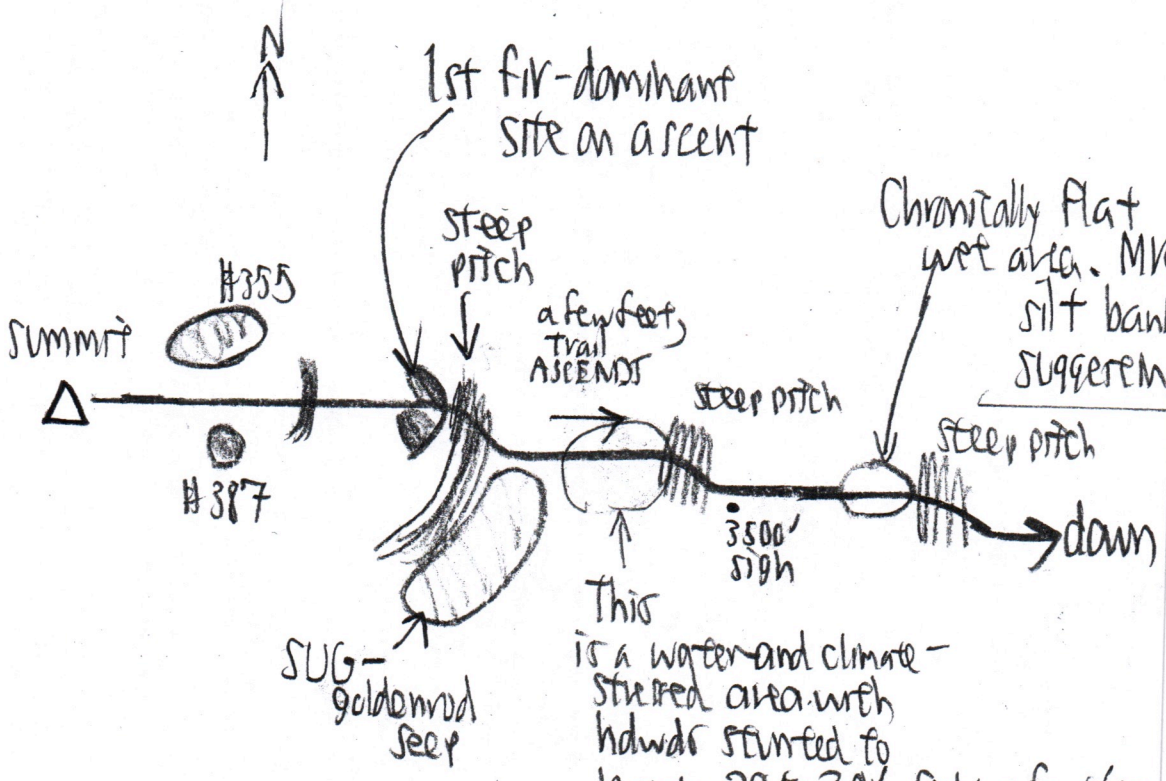
● The green area at W end of bog is now dense with 5 to 10-year old fir saplings, still easy to walk through now. Wait ten years & they'll be an impenetrable pole stand! Almost the whole summit has fir repro. only - so dense & shaded as to keep hardwood competition out.

(over)



Green belt represents a line of fir seedlings, several dozen, along NW side of trail. Seed source is scattered maturing fir W of the green line

More Traitside observations-



Chronically flat wet area. MK slipped on red silt bank on N side of trail, suggesting much red shale in the area, but none exposed. (Compare with red shale ending at on Graham Mtn Trail)

From the point along the trail up from Balsam Lake (Lake) where it crosses the SNY-Furlow blaze, just to E is a ranne about 10 to 15' deep. This ranne is headwaters of Black Brook. Mostly dry this high up. Plunges soon over a ledge.

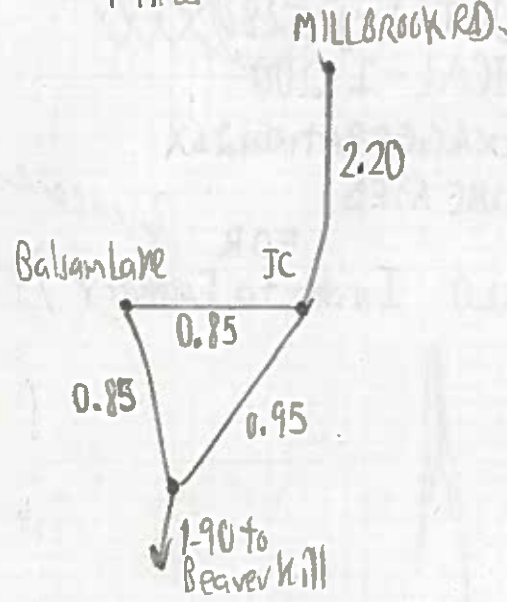
This is a water and climate-stressed area with hwdwr stunted to barely 20 to 30". Only a few fir. SUGs are twice as tall to W, although somewhat battered on top (next time, determine their ages). Water table is a few feet down here if level with that under SUGs.

260-31

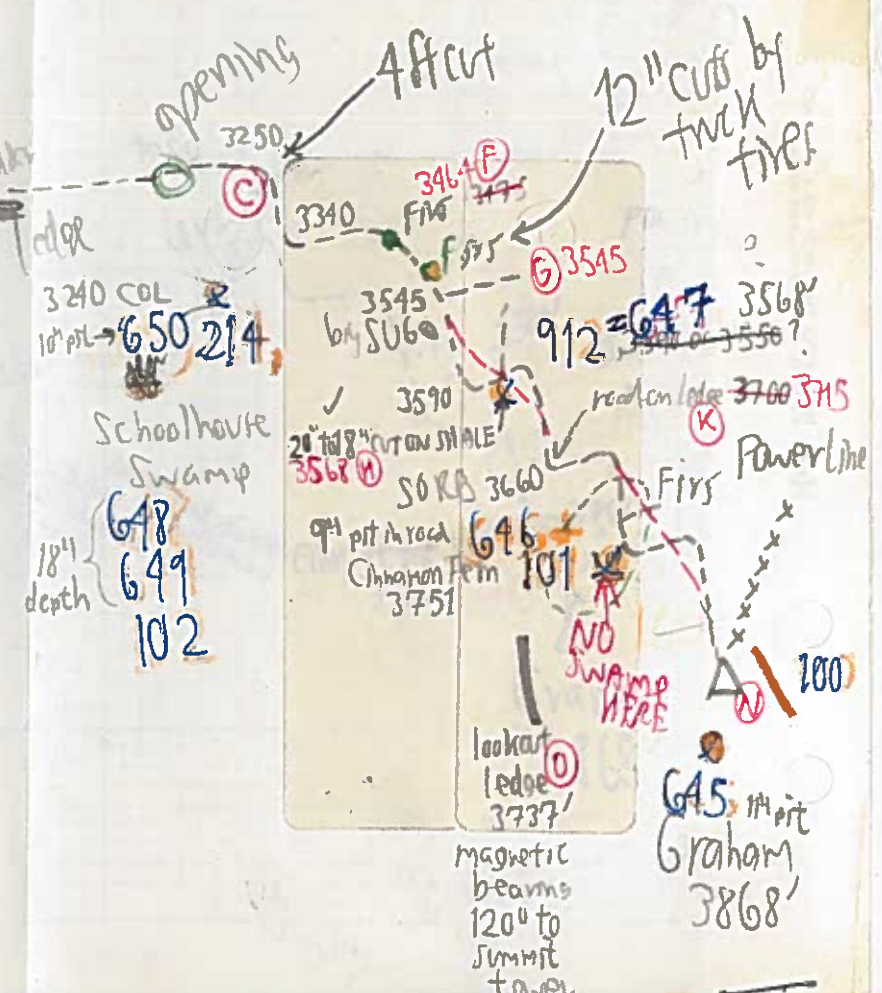
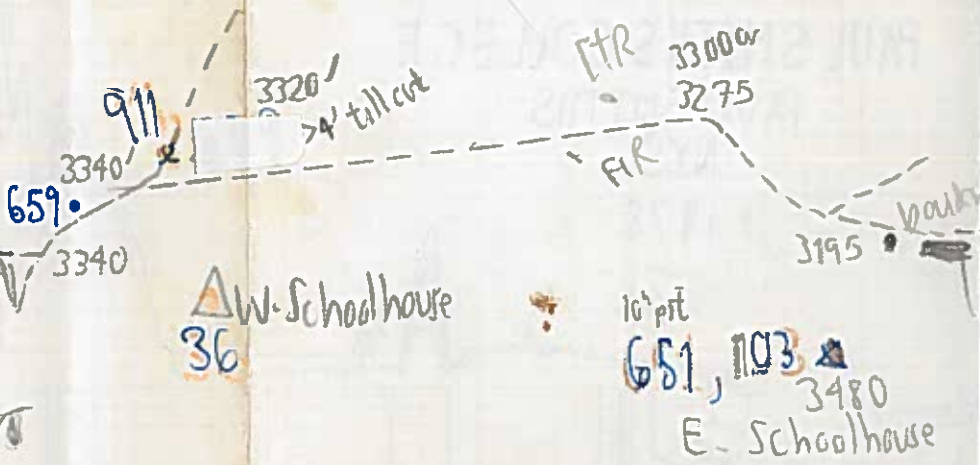
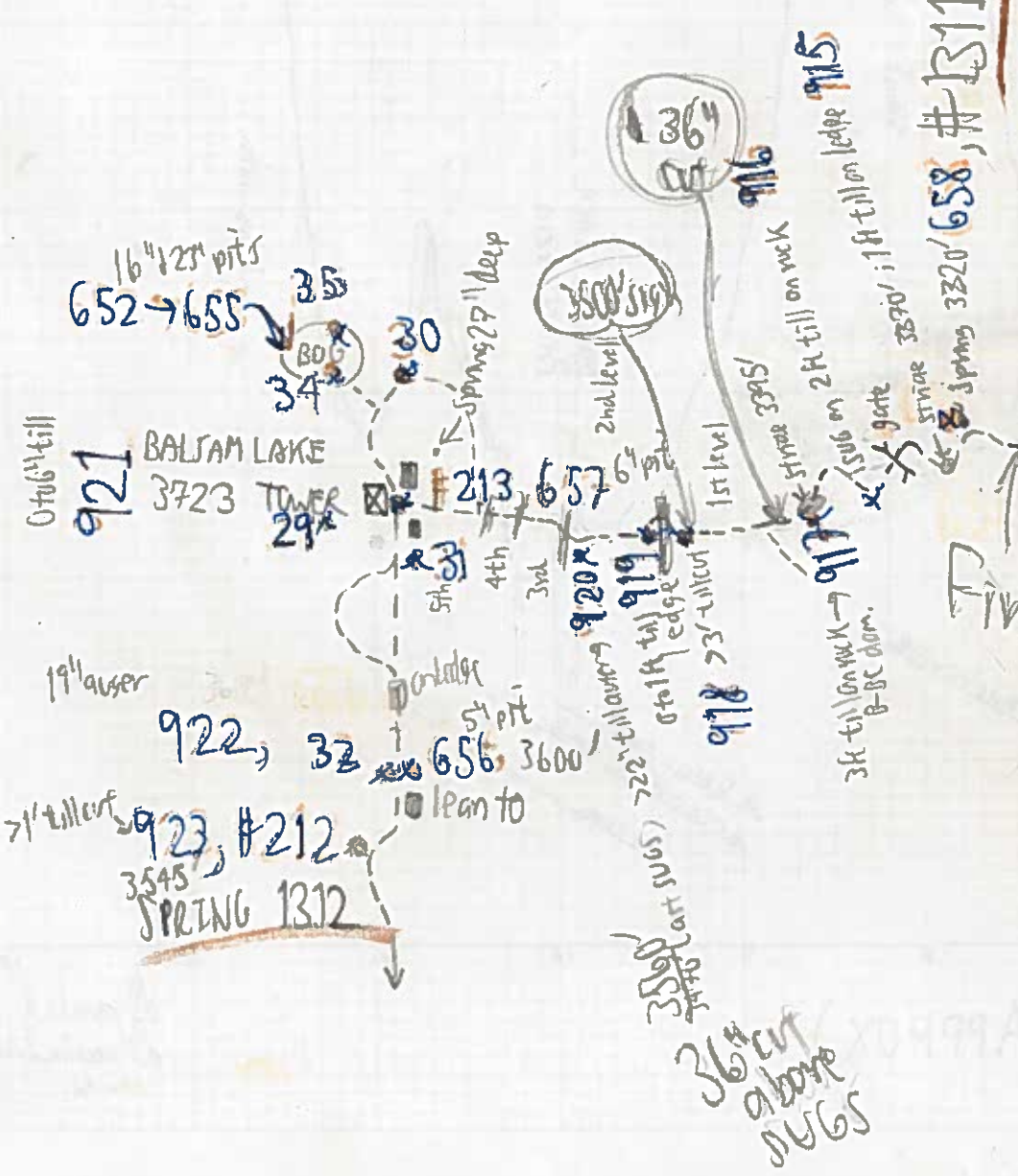
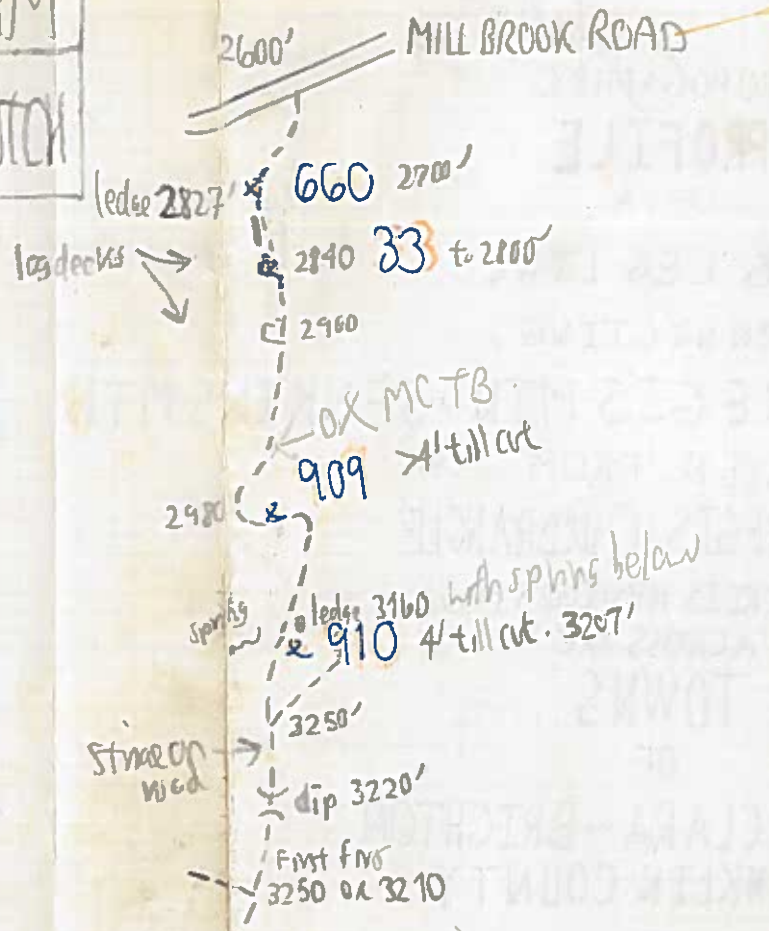
BALSAM LAKE - GRAHAM

DOUBLE TOP - PIGEON NOTCH

Miles



26031



Balsam Lake - Graham