

# Dry Brook Ridge Middle Summit (290-94)

slopes below and to the East 7/10/08

site	p	$\Delta p$	$\Delta e$	e <sub>Calc</sub>	e <sub>Map</sub>	Time	R
2810 Platz Rd. (A)	29.32	0.00		$R=0.898$	2120	9:15 9:40 AM	$R_{\text{average}} = \frac{3440' - 2120'}{29.32 - 29.90}$ $= \frac{1320'}{1.42''} = 0.930$
(B) Summit, Middle (Lunch I)	27.907 27.882	1.42 1.47	1320	3440	3440	10:48 AM 11:20 AM	
(C) slope gentle to <sup>moderate</sup>	27.96	1.39	1248	3368		11:23 LV TRAIL 11:34	
(D) slope mod. to steep	28.00	1.35	1212	3332		11:42	
(E) defoliation below	28.25	1.10	988	3108		NOON	
(F) harrow terrace	28.34	1.01	907	3027		12:10	
(G) stump??	28.42	0.93	835	2955		12:20	
(H) BASS + 2 stumps	28.48	0.87	781	2901	e-p#580	12:26 to 12:40	
(I) begin climb	28.40	0.95	853	2973		1:00	
(J) above seep	28.34	1.01	907	3027	e-p#581	1:12	
(K) top of 20' ledge <sup>on terrace</sup>	28.22	1.13	1015	3135		1:25	
(L) top 2nd ledge	27.98	1.37	1230	3350		1:45	
(M) on trail	27.91	1.44	1293	3413		1:58	
(N) Lunch II	27.97	1.38	1239	3359	COL	* 2:05 to 2:22	
(O) Bog #303	27.89	1.46	1311	3431	3420	* 2:36 to 2:45	
(A) Platz Rd 2810	29.35	0.00	0	2120	2120	3:40 4:06	$R_{\text{average}} = \frac{3440' - 2120'}{29.35 - 29.90}$ $= \frac{1320'}{1.47''} = 0.898$

\* Wet area CINN-VV at 2:30 near N-Middle Col.

③ 3368' One tree with red flagging led nowhere: not a land-use historical boundary. SUBs 1/2 defoliated. BC with E-tent caterpillar tent. Slope <sup>turns</sup> gently to moderately down. YB 33". SUB 30". Much ice damage, especially on BC, the dom.

④ 3332' Partial view ahead. The route lay between the E spur of N summit DBR to left, and Nanley's Corner to right. Slope turns moderate to steep. Keeping sun 90° to right of descent route. Thick Scamm & less DP. Some talus, no ledges SM

⑤ 3108' Arkville noon whistle heard on time. Minute whistle 1 min later faint. Defoliation more intense below as dom. shifts from BC to SUB. SUBs to 24", 1/2 defoliated. Several caterpillars still around, although well into pupating in valley below by July 1st. Straight ahead is the break in slope at 3100' elev of E spur of N peak.

⑥ 3028' 1st terrace narrow. SUBs to 24", one 30", 1/2 defoliated. YB 24". Balden but no ledge. MM, SAMB, Lonicer, CB.

⑦ 2955' 1st stump without a log? May be natural with log rotted 1st?

⑧ 2901' e-p# 580. Gently-sloping terrace betw. steep pitches. BASS 33" with spruce heavily browsed, 1/2 defoliated. SUB & YB to 24", the more ancient trees more scattered. Two stumps with wood collected from both; the larger 20" diam 2 pieces (YB) the smaller 1 piece with black fungus (SUB). Both stumps just S of BASS. No more stumps seen. Stumps > 50y old? LAR-EUP-OX-TIAR-ARIZIMP-APTREA RUBRA-VIOLA-PA-GAL.

Terraces are a good place to look for stumps and/or log roads as they are the most likely topography to be cut over on generally steep slopes.

⑨ to ⑩ 2901 to 2933': Heading obliquely upslope to NNW with sun directly behind. 12:50 OLR ALP-HYDRO-PBRAUNII-CB-OX-AA-30" SUB old, dead 33" YB. SCAMM

[Cross head of SUB-LAP cove, the beginning of Tompkins Hollow, on contour. 3 ASH: 20", 15", & 3rd.

More PBRAUNII-CAUL-ALLIUM in flower-ATHELPP-OSMO-ADONIS  
GEUM CONDENSE (same as at 2810)

(continued on p. )

10 vs 20

slope

Looking up & down from this level in  
cove head suggested that the 1<sup>0</sup>-2<sup>0</sup>  
bandway was being followed. Not  
obvious but below, most trees were  
straighter taller, with few broken tops &  
few twisted trunks. Dbh up to 2 ft,  
however, but straight, prob. max. only  
100 to 150y. Few or no 200y class  
trees.

Above, more twisted trunks,  
broken tops, and occasional dbhs  
exceeding 24", suggesting trees  
>200y. **e-p#581**

When was JMY acquisition here?

**J** 3022' on wide flat terrace  
above cove-head of Tompkins Hollow.  
2 OST. Looking back, Espur visible  
to SE — the one not descended.  
SUG mature and saplings defoliated  
80%. This is the 1st year of defoliation  
here because the ground cover has not yet  
been altered. SUBs 24" to 30".  
Ice damage begins here & up on to crest.

**K** 3135' Rpub ground 20' ledge. More than  
1/2 the ground is in full sun.

**C** 3350' Top 2nd ledge. BC dom below &  
1/2 defoliated, less so than SUB, 70'  
tall. Less steep above. SCAMM  
abundant.

**M** 3413' Return to trail. Breezy  
again on WNW winds, sheltered  
on the hot E slopes.

290-96

**N** 3359' Not much crown left on crest  
less so at **(BB)**: BCs with much-reduced  
crowns from April 2007 ice storm.  
Many mature dead beeches have come  
down over the years. The few SUBs on  
Crest are defoliated. Lunch II at CB  
patch.

**O** Beech stump freshly-cut on trail 1 mi  
N of Bog #303. 6" diameter = 65y.  
**Tree #C19** Sphagnum aroma smelled before  
the Bog was visible!!

Bog #303 has surrounding canopy  
only 40' high, but 60' to N & higher up  
at **(M)**. Why are RM&TB shorter  
here? Because of wetness?

Below on NBR trail to Platz Road:

Stump between doublet  
single stone walls.

One red pine stump, freshly-cut, age  
42y, 12" diam. Dead for how long??

**#108** OX patch returning under pine.  
YBs either not defoliated or 1/2 defol.  
RMs untouched everywhere.

Platz Brook is dry above parking Spur,  
but some water in it at Mill Brook Rd.

On a crest of NBR trail above Platz Road:  
SUG heavily defol. between top of pine-  
spruce plantation and top of former pasture.  
Above that, in area of B spruce & hill DP,  
RM&TB are non-defol & BC 1/2.

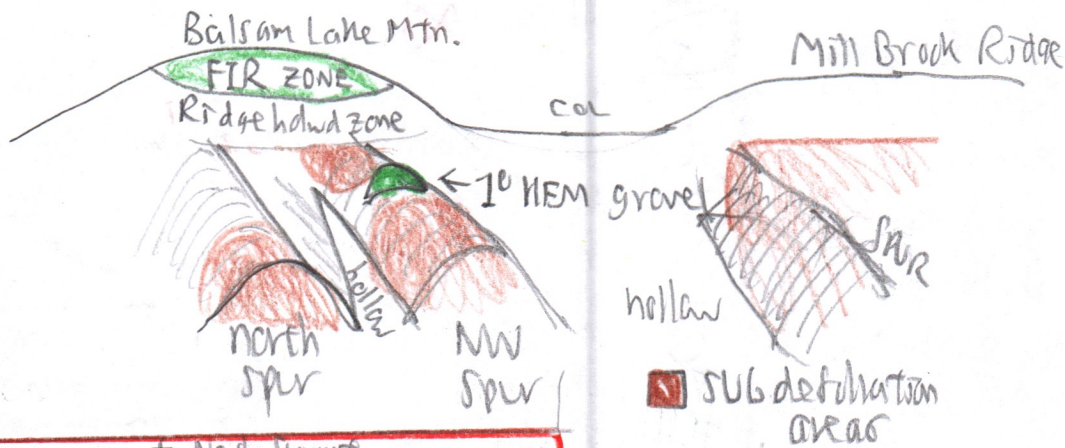
At seep, ALLIUM in flower. R. recurvatus  
SUB 1/2 defol. Seep is below N/Fem terrace.  
N/Fem terrace SUBs 3/4 to 1/5 defol.

On steep pitch & ledge above N/Fem  
Terrace, SUBs do not form a continuous canopy  
& are thus less defoliated.

Above <sup>only</sup> S side of Spur is heavily  
defoliated & visible from Mill Brook Road.

View from last barns on Plartz Road:-

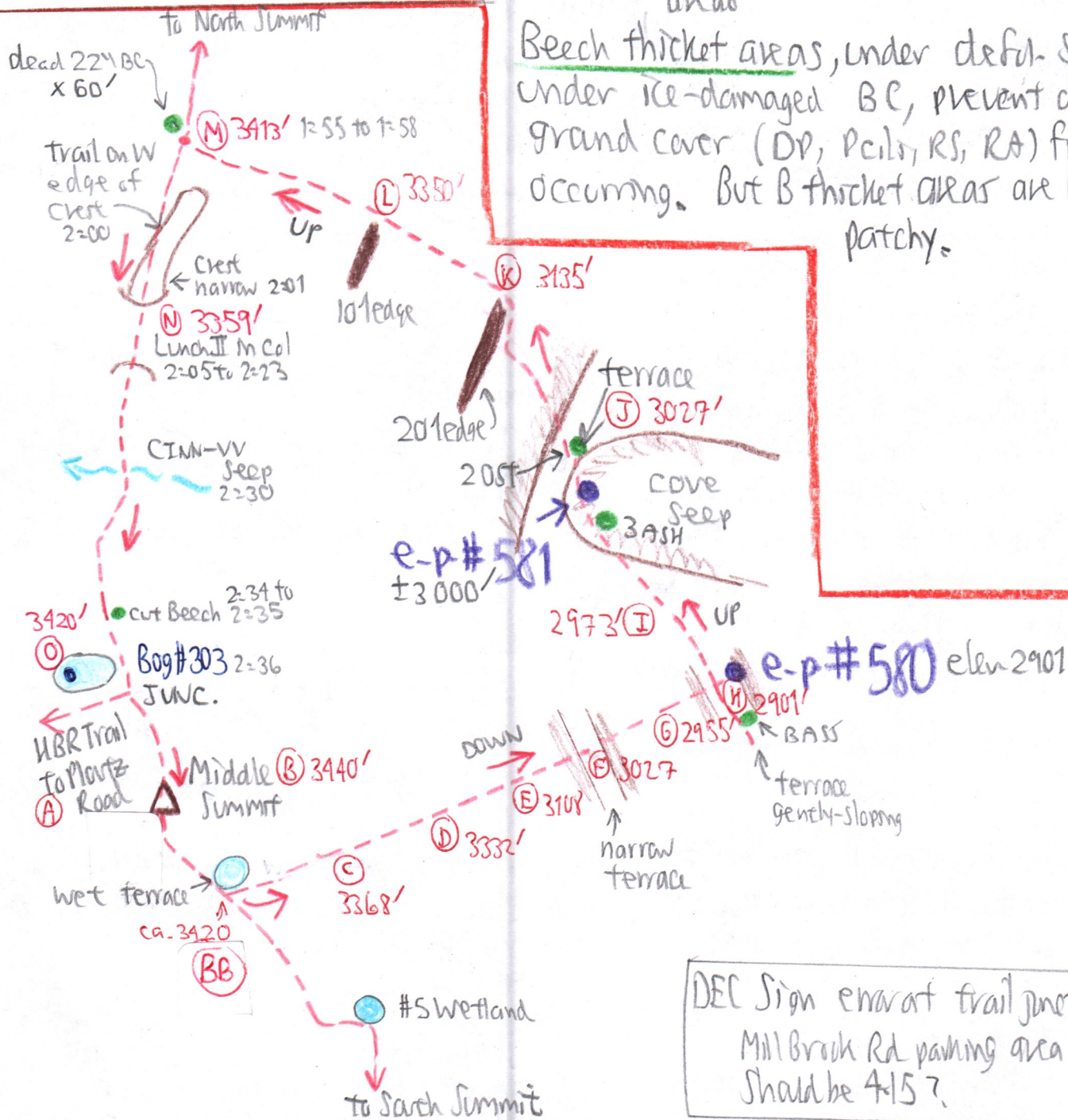
290-97



This is the time to map the upper limits of SUB dominance because of defoliation!!

from the distance.

Beech thicket areas, under defol. SUB or under ice-damaged BC, prevent dense ground cover (DP, PCIL, RS, RA) from occurring. But B thicket areas are local & patchy.



DEC Sign error at trail junction  
Mill Brook Rd parking area 7.15 miles ??  
Should be 4.15 ?