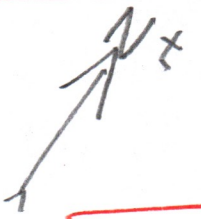


High Falls at Frost Valley

Sept. 14, 2002 after Bryotoxay to Box #350

250-45

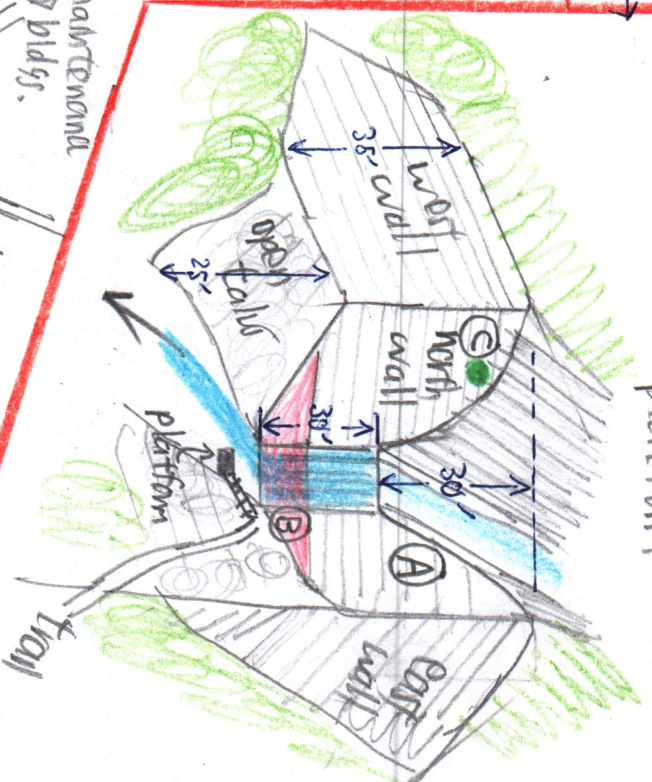


This is an unusual fall for the Catskills (more like Kaaterskill) with a wide amphitheatre.

Height estimates in feet →

- ①
- ⑤
- ②④

View from obs. platform



Vegetation geology

- ① gray sandstone
- ② red shale
- ③ *Sorbus*? young tree growing out of top of north wall. Bring monocular to verify.
- ④ Extensive DP-NRF glade without tree rem.

⑤ Illex montanae Command m

⑥ On talus in fall amphitheatre - HEMT B dom. MO-B-RA-M1-RO (=Rubus odor.) D. nesci-LAR-EUR-AFF-ADIV-ASTR-PUN??

⑦ deep pool ledge only at water level

Is this a post glacial gorge which refilled back from near parking area? Coal breeze at obs. platform from cold water on a warm, humid day.

Gorge walls could be 10, but not below the low ledge at ⑤.

Road cut at waterfall
between Frost Valley
& Clayville

Pr Bryo foray
5/12/80 1980

Pogonatum alpinum [locks like

✓ Polytrichum ohioense except
capsules are terete.] COLL.

Aulacomnium heterostichum COLL.

Amphidium

COLL.

Blindia
Bryhnia

COLL.

COLL.