

Dry Brook Ridge via German Hollow

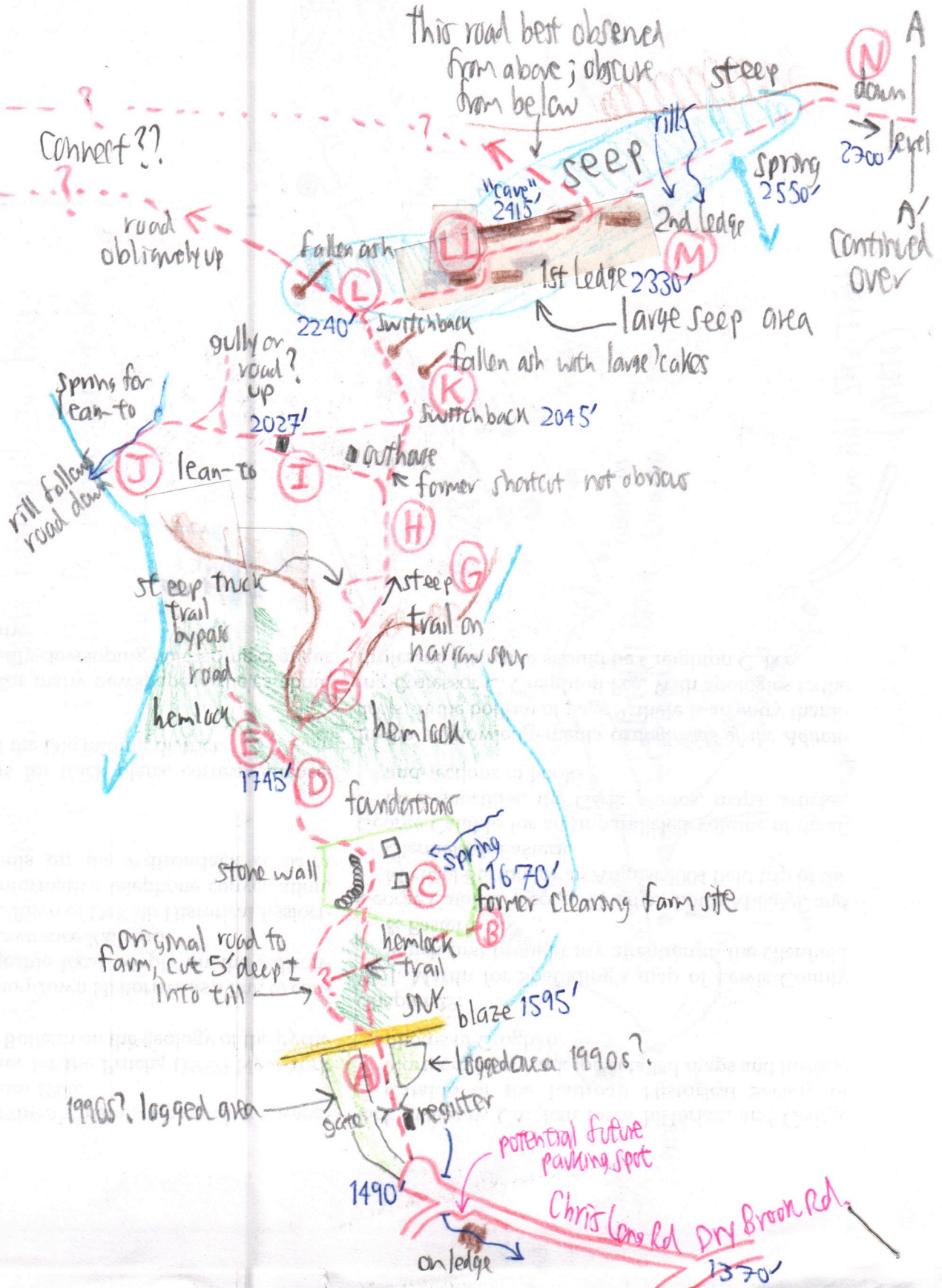
Trail to observe ground cover and Lucerne log roads

(290-66)

5/11/06
 No barometer
 = carried

Elevations from prior field notes in blue

roads observed on 5/29/96 see field notes pp. 290-40



A
 N
 down
 level
 2300
 A
 continued over

2910-67

Tree ages:

- (F) Beech cut to clear trail 9" = 65y. Tree #C-18
- (D) Twin hemlock, one 5" diam stump cut 6" above ground 55y
Broken Hem 3 1/2 to 4" diam = 40y Tree #44 ↑ Tree #43
Broken Hem 5" dbh, about 25y/radial inch. Total est. age 63y
- (A) Stump cut in recent 1990s logging HEM 13" diam = 82y. Tree #45

} cut several years prior to 2006

(Q) Monarda Swale stumps from 1960s are now still solid (not just a remaining perimeter), black, jagged tops, after 40y. Maybe 1/2 dozen stumps.

Soils on Ash lakes (K) & (L) are redder than along Dry Brick Road, indicating more red shale in till. Trees rooted only 2 to 2 1/2' deep. Humus barely 1 ft or 1 1/2" thick at (K) & in other places, NOT 3" as in ADKS. Not stony at (K) & (L) <20%.

