

290-80 Dry Brook Ridge

9/26/06

Search Middle Summits
to examine fern glades
on a firless ridge.

No barometer carried for elevations. For elevations, see pp. 290-50, 290-70 & 291-2.

Elevations on p. 290-81 are from these pages.

(V) to (A). Platz roadside: Aster div, pres 1
simplex. At (A) A. cord. A. puric at CCC pool.

(A) to (B). Collection device suspended from a
spruce branch. Frank Parker had changed
the collection container at bottom and
wrote "Hi, Mike" in register, while MK
was on the ridge. He signed in "Sirex"

(B) Red pine stump with much bark still on,
prob-cut during 1994-1995 trail con-
struction. 55y. Could have been dead
for a few years in 1994-1995.

(C) DP dominance under N hwd ends at upper
elev. of pasture. Nil tree repro. to here.
Obtain year of farm abandonment from
these trees, or those in pasture (W), or
from SMK acquisition records.

Above (C), B sprouts prevent
DP continuous ground cover.

Another Aster simplex.

SEE PAGE for Pasture Detail (W)

(CC) 4 wheel motorized vehicles turned
back at base of steep slope,
at upper end of NYF terrace.

Less stony here than above (D).
Scamylk begins atop 1st high
ledge in 10. Sug are scattered
from here up to (H), but never abun-
Ridge growth begins.

P-P # 183

(E) Scamyl. dom under BC, few SUB. Canopy 40'
(F) few SUB.]
with far more trees
than DP can tolerate.

(G) SM basal lvs only, as on Eagles Balsam
Mtns.

(H) At lower edge near trail, NYF dominates with
BC ^{thicket} invading. In center of glade is pure DP,
on contour & nearly 100' wide, dense.
Margins filling in with B & MO, YB on
ledge top slowly shading the DP out. 3 dead
trees within the north area.

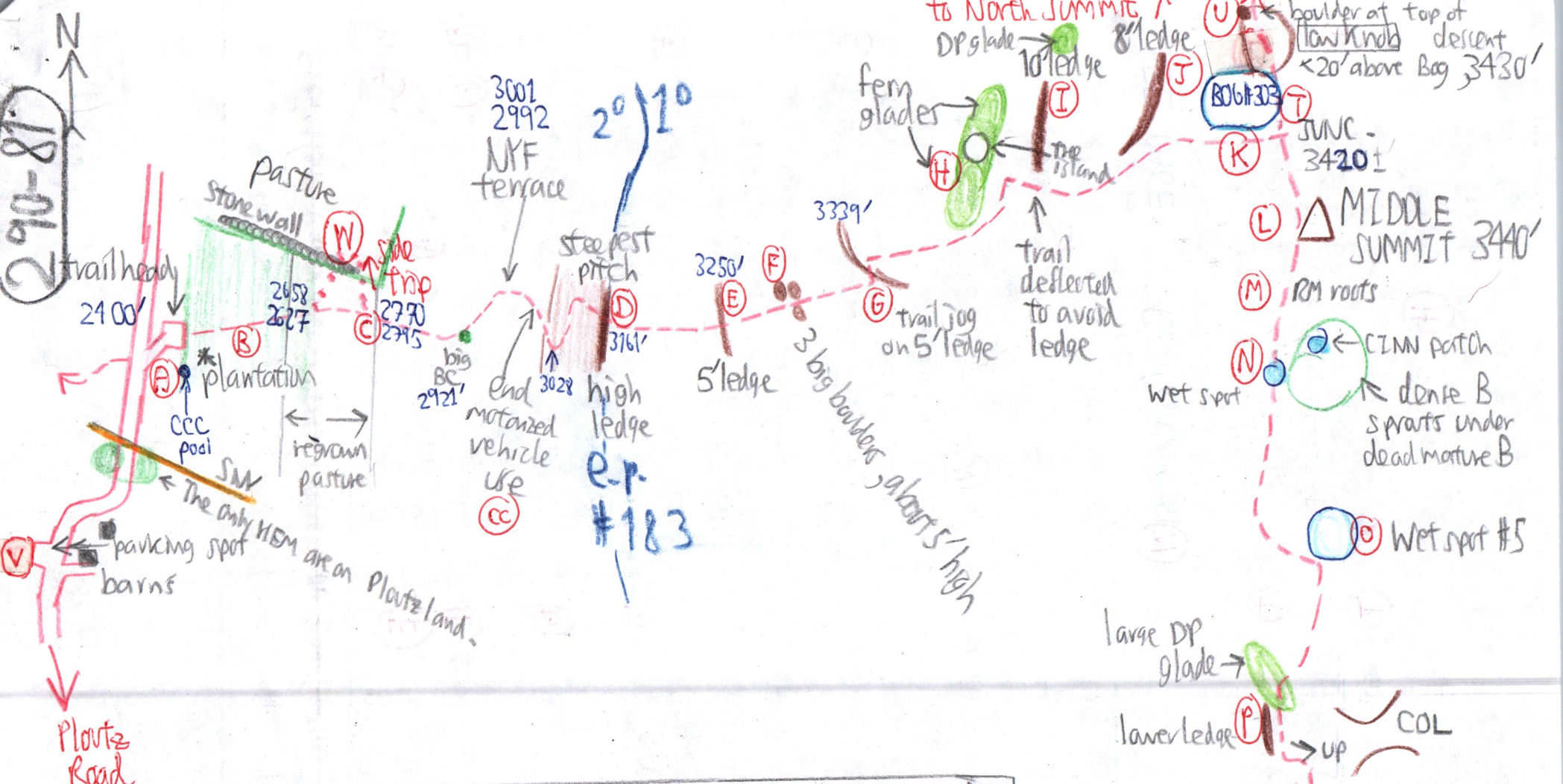
A tree island separates the two main
open areas. Several 12" SUBs are within
the south area. Few dead trees occur
within the glade, but there are widely-
scat. live ones with dead branches.

No two glades are alike.

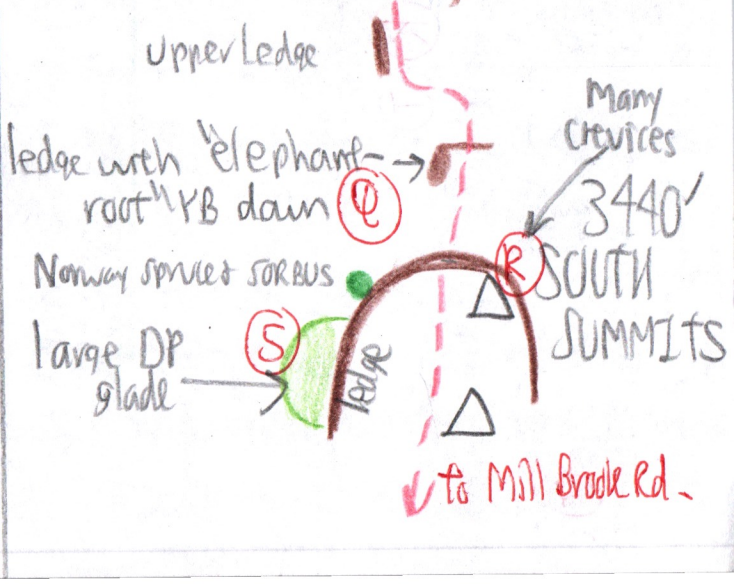
RS, RA, Peili along trail.

(J) This ledge holds up, & comes very close to
Bag #303 (K) & (T).

(T) Rhodo. browsed down to only 6" high along
DBR blue trail & at NW end of #303.
Coptis & CINN high & dry above ledge (J).
Dulichium abundant at SW end near
pool. Ilex vert in fruit red.



TIME TABLE	ACTIVITY	POINTS
10:00 AM		V
10:15 AM		U, T, K, L, M, N, O, P, Q, R, S, T, V
10:47 AM		
11:00 AM		
11:15 AM		
11:50 AM		
12:00 AM		
12:15 AM		
12:23 AM		
12:27 AM		
12:52 AM		
1:52 AM		
2:10 AM		
2:23 AM		
2:34 AM		
2:53 AM		
3:15 AM		
3:30 AM		
3:39 AM		
3:57 AM		
4:09 AM		
4:29 AM		
4:34 AM		
4:47 AM		



(L) Middle Summit 3440'. (290-82)

Canopy 40' without a glade on the very summit - too closed-in. However, to E is a \$campyl about 40' wide caused by 1 dead BC gap. Temp 55°F. B saplings/sprouts in middle of glade. NO DP glades.

Thoughts written during lunch:

The sparsity of glades on DBR may be related to the lack of fir. Both are due to a lack of frequent, large-scale disturbances. Canopy gaps are small and are prob. shorter-lived, therefore than large canopy gaps; small gaps with partial shade tend to fill in with campyl + NKF rather than DP.

Glades probably come and go, and may even shift over time, but not to the extent of ADK fir waves.

(M) RM → forming a 'cake with a 15" to 18" thick root mat. (How stony? - not observed).

Another RM cake betw (Q) + (R) + few SUB.

(N) Wet spot on trail + a small CINN patch to NE, but NO Sphaerium or peat. CX follic. Dead B grove now surrounded by a small \$campyl-NKF glade. B sprouts invading from the edge + from the grove. DP uncommon because of moderate to dense shade.

(O) Wet spot # 5. One 'cake 18" mat a-long trail. CINN dom, with Cinna, Chelone, CX crin, Glycena nerv., Viola. Different Sphaerium spp

including 1 brown one (NO coll'n)
Max. depth of peat 8" (NO coll'n)
NO standing water. YB + RM dom. within
South edge along trail: OX, CB
Diameter: 28 feet N-S and E-W, or about 56 to 75 feet.

(P) Some SUB along ledge top. DP large glade at N end, continuing down to NW, about 200' long and 30' wide. BC-dam. NO dense shade. Edges filling in with B sprouts + MO upon boulders.

RA + RS are uncommon on DBR maybe for same reason DP is uncommon: glades are too small.

(Q) YB regeneration thicket under damed "elephant-root" YB. Ptilium + campyl abundant. Opening < 50' across.

Trail not as stony as Eagle Mtn Range trail + fewer stones in 'cakes on DBR

(R) South Summit 3440' has two knobs, one about 100 to 150' E of trail, the other a little to the south + immediately E of trail. 40' Canopy. Ledges on E, NE, N + NW have many crevices + are 10 to 20' high. Canopy may cover 50% of ground so \$campyl dominates. Dead trees + many dead tree limbs, typical of 10 and old growth.

Ptilium AA-OX in shade. Ptilis in sun. B-RM-YB-LL BC-MO. SOBBS only on W side. campyl some glades 25 to 30 ft across. DP uncommon. Can hardwood height indicate fire preference or absence + time of dis-

290-83

appearance? Hardwood forest is typically 25' to 30' tall when fir enters on ascent, but what about high firless summits?

Canopy groves always have dead trees within them but no ferns under dense B or MO.

SM basal lvs. on trail, NO inflorescence. Uncommon on DBR.

(S) Large DP glade on W flank off trail & NOT visible from it. Maybe 100' west. Glade is $\pm 100'$ across ss.

The Norway Spruce on the ledge died at about 7' tall, but lower branches are still alive & spreading horizontally.

Sorbus in brilliant red abundant fruit.

Canopy 25' above ledge, 50' below. DP glade has several dead KB & RM within it & partly-dead SRB.

(W) Pasture top is dominated by DP, S ng, Anaphalis, S bicolor, S gram. Scattered trees & tree islands include CR, RM, OST, SUB, Ewhpine & Beech, only a few decades old.

B & MO have moved out about 50' into pasture from stone wall, plus a few KB & RM. 50' invasion in how many years of aban.?