

See also p. 290-48 note of 5/29/96  
 FOLDER (E)  
 290-54  
 From 2810 to Dry Brook Ridge North Summit  
 10/16/05 with Emma Bachmann (CCO staff) & Ted Mack

Site	P	$\Delta p$	$\Delta e$	e calc	e map	time	R
(A) 2810 deck	29.88	0.00	0	0	1500	9:30 AM	
(B) 2810 upper boundary	29.82	0.06	53	1553			
(C) end extant pasture	29.71	0.17	149	1649	1620		
(D) property corner	29.61	0.27	236	1736			
(E) 1st ledge	29.45	0.43	376	1876			
(F) 2nd corner, old field	29.45	0.43	376	1876			
(G) Cabin	29.33	0.55	481	1981	2100		
(H) log road junc - BASSWOOD 4 CORNERS	29.12	0.76	665	2165			
(I) log road turn NE	29.01	0.87	761	2261			
(J) box of ground cover under e-hemlock	28.92	0.96	840	2340			
(K) view NE	28.88	1.00	875	2375			
(L) SM corner, lower	28.82	1.06	928	2428		11:00	
(M) SM corner upper	28.78	1.10	963	2463			
(N) steep pitch on log road	28.57	1.31	1146	2646			
(O) 6" YB on road	28.37	1.51	1321	2821			
(P) road ends, begin 1°	28.26	1.62	1418	2918			
(Q) ridge forest begins	28.07	1.81	1584	3084			
(R) gentle slope, SUG dom	28.00	1.88	1645	3145			
(S) lunch ledge	27.96	1.92	1680	3180		LUNCH 12:30 to 12:50	
(T) seep terrace	27.92	1.96	1715	3215			
(U) beech thicket	27.80	2.08	1820	3320			
(V) Summit	27.64	2.24	1960	3460		1:40	
(W) trail	27.66	2.22	1943	3443	3460	1:44	
(X) Bag #307 at GERMAN hollow	28.05	1.83	1601	3101	3140	2:50 4:30	44°F air.

$$\frac{\Delta e}{\Delta p} = \frac{3460' - 1500'}{29.88 - 27.64} = \frac{1960'}{2.24''} = 0.875 \approx R$$

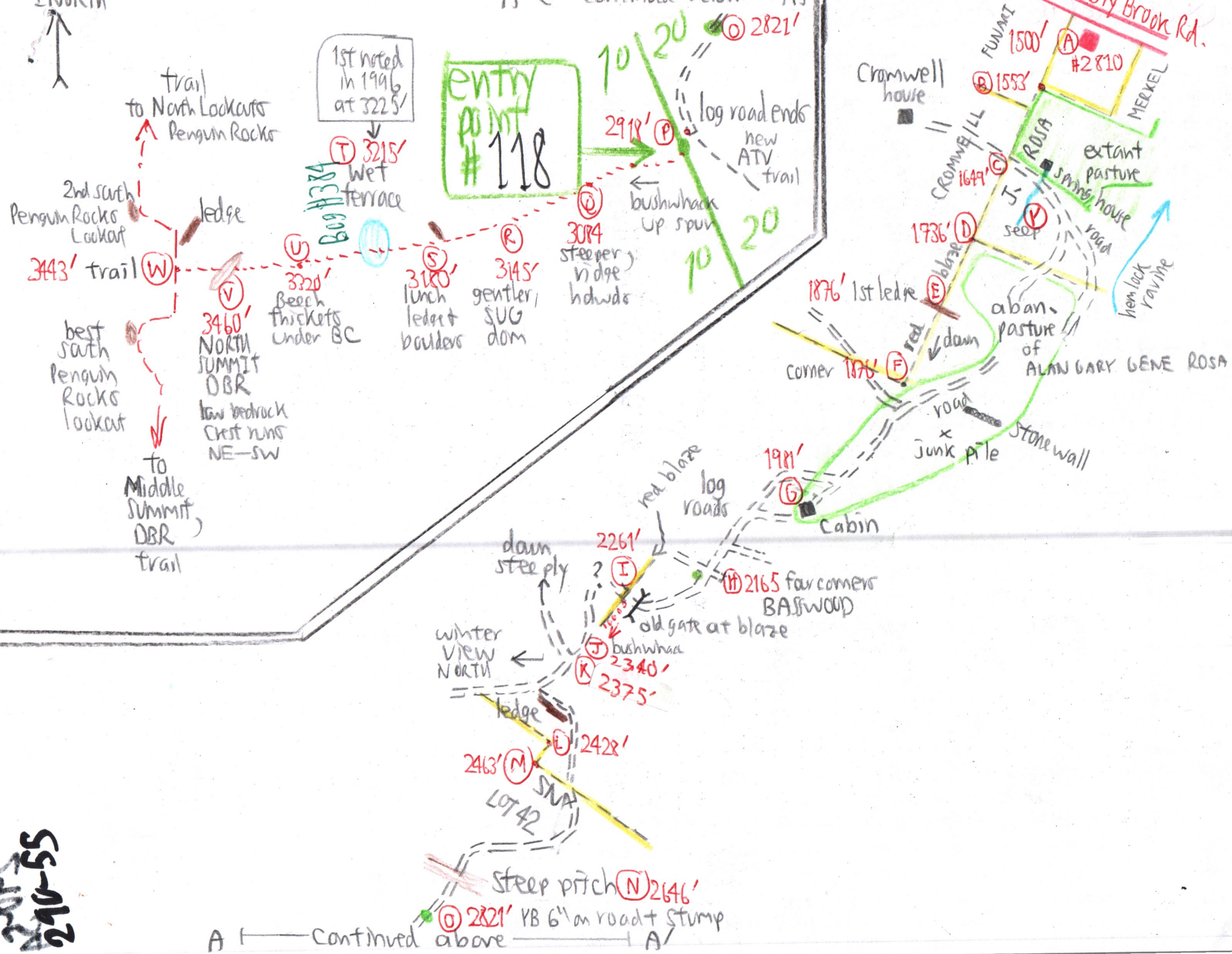
Entry pt. # 118



A' ← continued below → A

1st noted in 1996 at 3225'

entry point #118



2005  
210-55

A ← continued above → A