

# Utsayantha Range

6/3/03 with David Turan 409-16

Location	p	Δp	Δe	e calc	e map	R	time	
							GOING	RETURN
(A) Utsayantha Summit	28.44				3214		9:30 I AM	3:26
(B) COL	28.56				3120			3:10
(BB) clearcut; road down to NE (see over)					3160			
(C) begin McGregor dome	28.52				3140			
(CC) last stump on McGregor (see over)		MW shoulder			±3125			
(D) Mc-Gregor Summit <span style="color: green;">e.p. 92+93</span>	28.46	0.56	520	3180	3180		ca. 10AM	2:45 2:30
(E) 1st stump on McGregor	28.52	0.50	465	3125 OR 3150?	E shoulder 3050			
(F) Upper end of pasture	28.65	0.37	344	3004	2870			
(G) lower end of pasture	28.72	0.30	279	2939				
(H) BASS + OST on older pasture	28.80	0.22	204	2864				
(I) powerline col	29.02	0.00 0.00	—	—	2660			
(J) junction road through col	29.00	0.02	20	2680			11:00	
(K) road forks; oak	28.84	0.18	177	2837				
(L) SUB seep terrace on log road to SW	28.80	0.22	216	2876				
(M) log road	28.72	0.30	295	2955				
(N) log road	28.61	0.41	403	3063				
(O) Royal Fern Fen	28.50 (see over)	0.52	511	3171	±3110			1:15
(P) Moresville Range North <span style="color: green;">e.p. 94</span> (lunch)	28.43	0.59	580	3240	3240		11:52 lunch 12:20	1:08
(PP) seep (see over)								
(Q) log road junction	28.65							
(QQ) col (see over)					3040			
(R) leave log road	28.62			±3070				
(S) Moresville Range South	28.52				3160		12:40	↗

$\frac{3180-2660'}{29.02-28.46} = \frac{520'}{0.56} = 0.929$   
 $\frac{3240-2660'}{29.02-28.43} = \frac{580'}{0.59} = 0.983$   
 $\frac{3180-2660'}{29.02-28.46} = \frac{520'}{0.56} = 0.929$

Double-lettered locations are on the return trip

Return Rate Elevations

estimations

At (H) BASS clump and OST lying across the skid road with Armillaria !!

	p	Δp	Δe	e calc	e map
(B)					3120
(BB)					3160
(C)					
(D)					
(P)	28.42				3240
(PP)	28.60				3080
(EE)					
(S)					
(I)					
(O)					
(P)					

} ±160' Δ

Seep Floras

Pasture area Flora

(L) Cornus alt seedlings common in the area.  
 (PIN + lot CB nearby + LL)  
 Norway Spruce Sapling. Birch

(PP) SUB dom.  
 ALL, CAULD, LAT, IMP,  
 DIC CAN, VC  
 much gravel, but less larger stones,  
 ca. 30%

Sub dom VC, ASDIV at (H) pancake 30% gravel

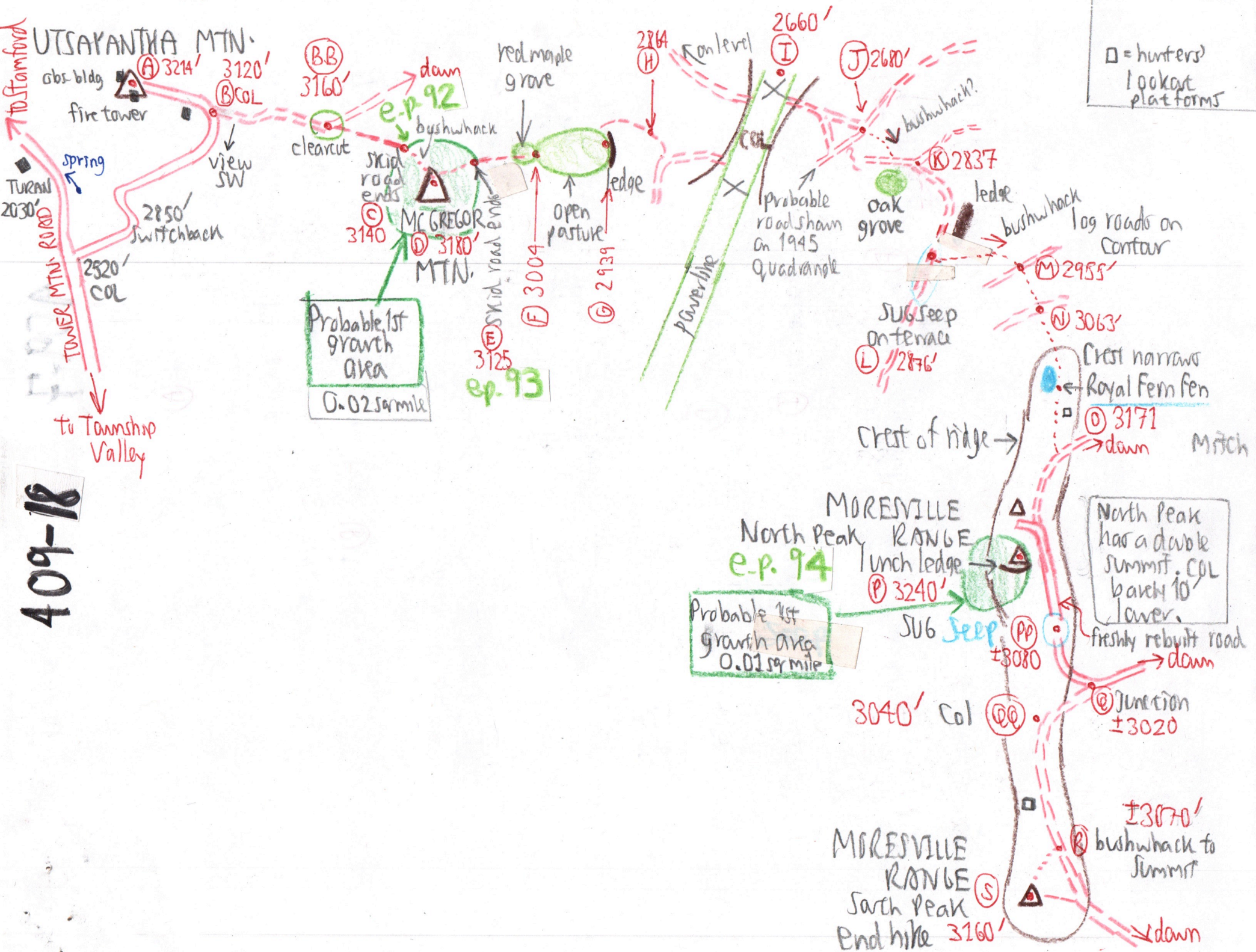
(F) to (G) CARP + OST  
 1 EuroL arch  
 OHC Fls. Smellsweet  
 PB VACC, RO  
 Azalea  
 Interrupted fern

Only Royal Fern dominates, very rare for CS, and 1/2 unrolled brown not colored.  
 2 spp Sphagnum  
 COLL.

Royal Fern Fen (O)

30 paces along the crest x 18 paces wide, or 75 ft x 45 ft  
 = 3375 sq ft  
 = 0.08 acre

409-18



□ = hunters' lookat platforms

Probable 1st growth area  
0.02 sq mile

Probable 1st growth area  
0.01 sq mile

North Peak has a double summit. Col back 10' lower.

UTSAVANTIYA MTN.  
obs. bldg  
fire tower  
view SW  
2850' switchback  
2520' COL

BB 3160'  
ep. 92  
dam  
bushwhack  
clearcut  
skid road ends  
3140  
C

red maple grove  
open pasture  
edge  
2939  
G

2660' I  
K on level  
probable road shown on 1945 Quadrange  
Powerline  
oak grove  
ledge  
bushwhack  
log roads on contour  
2837 K  
2955 M

SUB Jeep on terrace  
2876 L

crest of ridge

crest narrows  
Royal Fern fen  
3171 O  
down  
Mitch

MOREVILLE RANGE  
North Peak  
Lunch ledge  
3240 P

SUB Jeep  
3080 PP

3040' Col  
@@

freshly rebuilt road  
down  
@ Junction  
±3020

MOREVILLE RANGE  
Sarah Peak  
End hike 3160' S

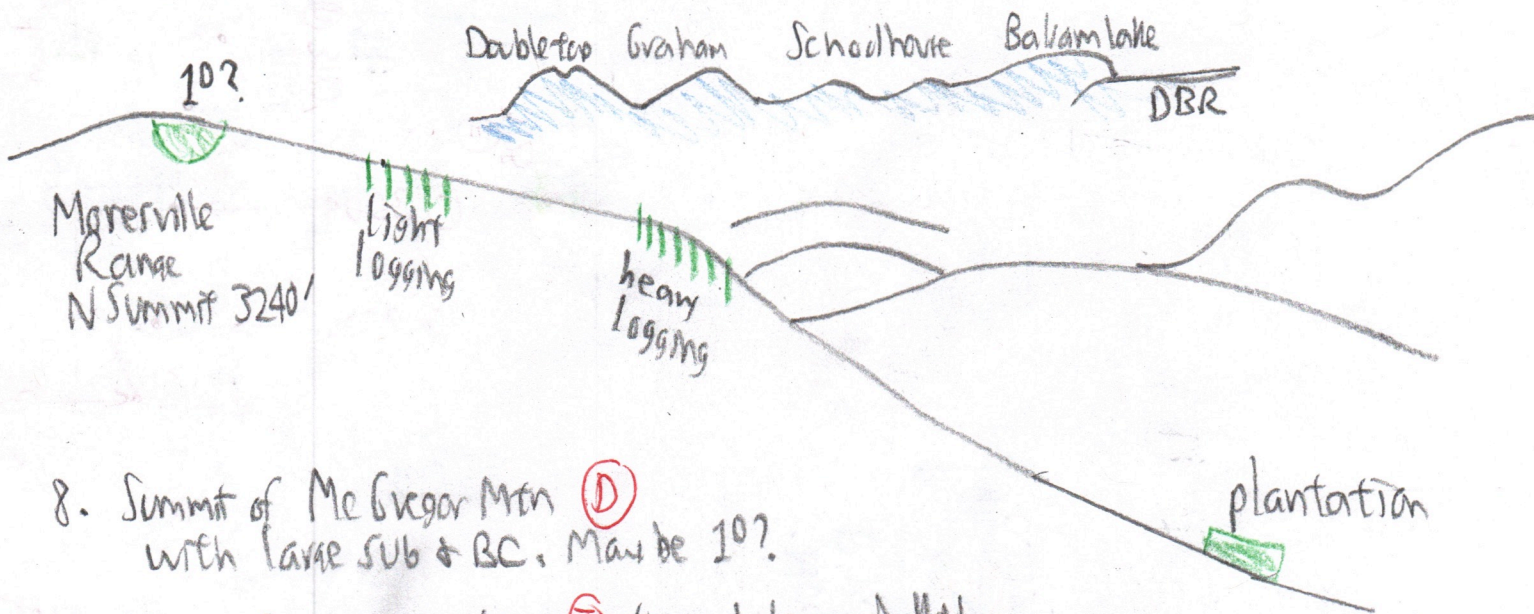
±3070' bushwhack to summit  
down

# Photos

409-19

2-POA

1. From Tower Mtn Rd - Col looking NW to Stamford
2. From Utrayantha Summit (A) " " "
3. From " " " N to Bald Mt (2720') & note the wind shear
4. Summit of Utrayantha towers
6. From Utrayantha looking NE to Mayhams Pond & UTD RR grade
7. View S toward Doubletop from (B):



8. Summit of McGregor Mtn (D) with large sub & BC. Maybe 10?
11. View from powerline (I) toward Leonard Hill & N end of Co Escarpment
9. View from (F) to Blackheads, Kili Peak & Hunterfield.
10. Royal Fern Fen

# FLORAS 409-2

SPECIES	(A) 3214'	(D) 3180'	(P) 3240' Mooreville North Peak	(S) 3160' Mooreville South Peak	(BB) 3140'
SUG RM (See (E))	✓ some	✓ few	✓ few	✓ some	✓ some
B	✓	✓	✓	✓	✓ dom
BC	✓	✓ dom	✓ dom	✓ dom	✓ some
YB	✓	— at (E)	✓ few	✓	✓
MO	—	✓	—	—	—
SORB	✓	—	✓ N shoulder	—	—
SAMB	✓	—	✓	—	—
CNC	✓	—	—	—	—
RG	✓	—	—	—	—
VA	✓	—	—	—	✓
MM	—	—	—	—	✓
PTN	—	—	—	—	✓
AA	✓	✓	✓	✓	—
RS	—	—	—	✓	—
PCTLI	—	— at (E)	✓	✓	—
OX	—	✓	—	✓	—
CLAYT	—	✓	—	✓	—
TB	—	—	✓	—	—
PREN	—	—	✓	—	—
RA	—	—	—	—	✓ open
ERY	✓	✓	✓	✓	—
MC	—	—	✓	—	—
CB	—	—	✓	—	—
STREPT	—	—	✓	—	—
LL	—	—	✓	—	—
\$CAMPL	✓	✓	✓	✓	—

○ Royal Fern Fen:

VV  
Sphagnum 2 spp. collected

Prober max. 5' to stony till. Shallow.  
Nil peat.