

Halcott Mtn. from Westkill Deep Notch

with Sean McCarthy 6/7/02

Location	P	Δp	Δe	e calc	e map	time	R
(A) Parking area on Route 42	30.40	0.00	—	—	1790	8:43 AM	
(B) end stone wall	30.31	0.09	85	1875	1		$\frac{3520-1790}{30.40-28.57}''$ $= \frac{1730'}{1.83''}$ $= 0.945 \text{ on}$ <p>day with air pressure slowly rising</p>
(C) Steep complex. in N hdwr	30.20	0.20	189	1979			
(D) Stone piles on boulevard old rd	30.14	0.26	246	2036			
(E) 1st large hemlock in ^{cove} grove	30.08	0.32	304	2094			
(F) mid-grove hemlock	30.02	0.38	359	2149		(F) 9-20 AM	
(G) top of hem-grove. Cross break	29.83	0.57	539	2329	2420 confluence		
(H) 111" SUG crum ± 10"	29.68	0.72	680	2470			
(I) top 1st ledge; YB evenaged	29.60	0.80	756	2546			
(J) top MM, YB talus ledge	29.27	1.13	1068	2858			
(K) on east spur	29.16	1.24	1172	2962			
(L) spur with terraced ledges	29.04	1.36	1285	3075			
(M) rounding off; less steep	28.70	1.70	1607	3397			
(N) Halcott Mtn. Summit	28.57 28.59	1.83 1.85	1729 1730	3519 3520	3520	10:56 11:40	
(O) Springs	28.86	1.58	1477	3267			$\frac{3520-1790}{30.44-28.59}''$ $= \frac{1730'}{1.85''}$ $= 0.935$
(P) more springs	28.95	1.49	1393	3183			
(Q) ASH	29.62	0.82	767	2557			
(R) BZ6 tooth, more ASH ⁴⁸⁵	29.76	0.68	636	2426			
(S) hemlock, grove top	29.83	0.61	570	2360		(S) 1=00	
(T) ASH common, OST, oak litter	29.94	0.50	468	2258			
(U) BASS	29.98	0.46	430	2220			
(V) falls above & below ford	30.38	0.06	56	1795			
(W) BB & stone pile	30.43	0.01	9	1799			
(X) Hwy 42	30.49	0.05	-47	1743			
(A) Parking area on Route 42	30.44	0.00	—	—	1790	1:40 PM	

Daniel Case's Hemlock Grove, probably 2nd growth

402-11

Tree measured #	Circum.	DBH	age
① at (E) } grove base	89	28.3	
② at (E) }	99.5	31.7	
③ at (E) }	103.	32.8	
④ at (E) } mid-grove	122	38.8	Using same growth rate as tree #6: $\frac{?y}{38.8} = \frac{60y}{12} = 194y$
⑤ at (E) }	103	32.8	
⑥	—	10	50yr old broken top; growth rate $\frac{50y}{10''} = \frac{60y}{12''}$ Tree #37
⑦ near (G) top grove	105.	33.4	
⑧ (E)	—	20	Tree #38 90 years in 5" of the 10" radius. The other 5" of radius gone or rotten. } ∴ 180 y est.

History of Grove

at ① 2036 ft, just below the grove, is a series of stone piles on top of flattop boulders, a different kind of farmer's stone wall. A road led up to these.

No bark roads seen anywhere IN the grove.

Bushnell's Tannery ran 1830s to just after 1856 (#T50 in Therx II).

The largest tree, #4, is estimated to be 194y, or established in 1808, too small to have been barked. Tree #8 is estimated to be 180y, estab. in 1824.

(E) Base of grove includes ASK & DAK suggesting some human disturbance.

Very, very few dead & downed old ^{hemlock} trees are on the forest floor suggesting 2nd & still young-and-growing individuals. A 1st growth stand would have a cluttered floor.

Growth rate = $\frac{108y}{DBH 12''} = \frac{90y}{5''} = \frac{?y}{6''}$ radius

Vegetation

Entry points, ## 84 & 85

- #84: **D** is most certainly 2^o with old road & stone piles 2036'
E " " " " with Ash & Oak 2094'
F may be in 1^o 2149'
G Certainly in 1^o - no pioneers, no roads, huge SUGS to 111" (35.3" DBH) at **H** 2470' examine
 2329'
- #85: **Q** 2557 has a single ash & may still be 1^o
R 2426 with big ash & several ash certainly is 2^o

Species distn: Burn index (2)

- OAK **V** 1795, **E** 2094
 OAK litter leaves (no tree obs) **T** 2258
 BASS **U** 2220, **C** 1979, **G** 2329
 ASH **Q** 2557, **R** 2426, **T** 2258, **O** 1979
 SORBUS **N** saplings **D** 2036
 VACER **G** 2329 **E** 2094

Ost 2258' **T** 53" crown = 16.9" DBH
 BF 1799'

YB-MM talus: **I** to **J**, 2546 to 2858

Boreal ground cover
 Well-established by **I** 2546:
 OXICB, ME, AN, S

Even-aged YB dom, about 10", suggests one natural disturbance. Does not look like a burn. No charcoal. Few larger trees of any species. A ^{below} blowdown or ice storm perhaps, early 1900s? **L** 3075. NO large trees, **P** to **Q**.

BC becomes dom at **M** 3397' Botrychium va. at **O**

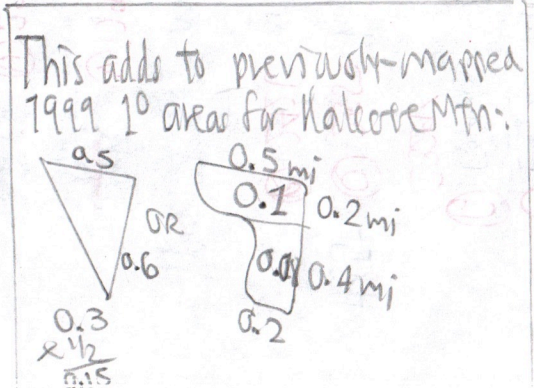
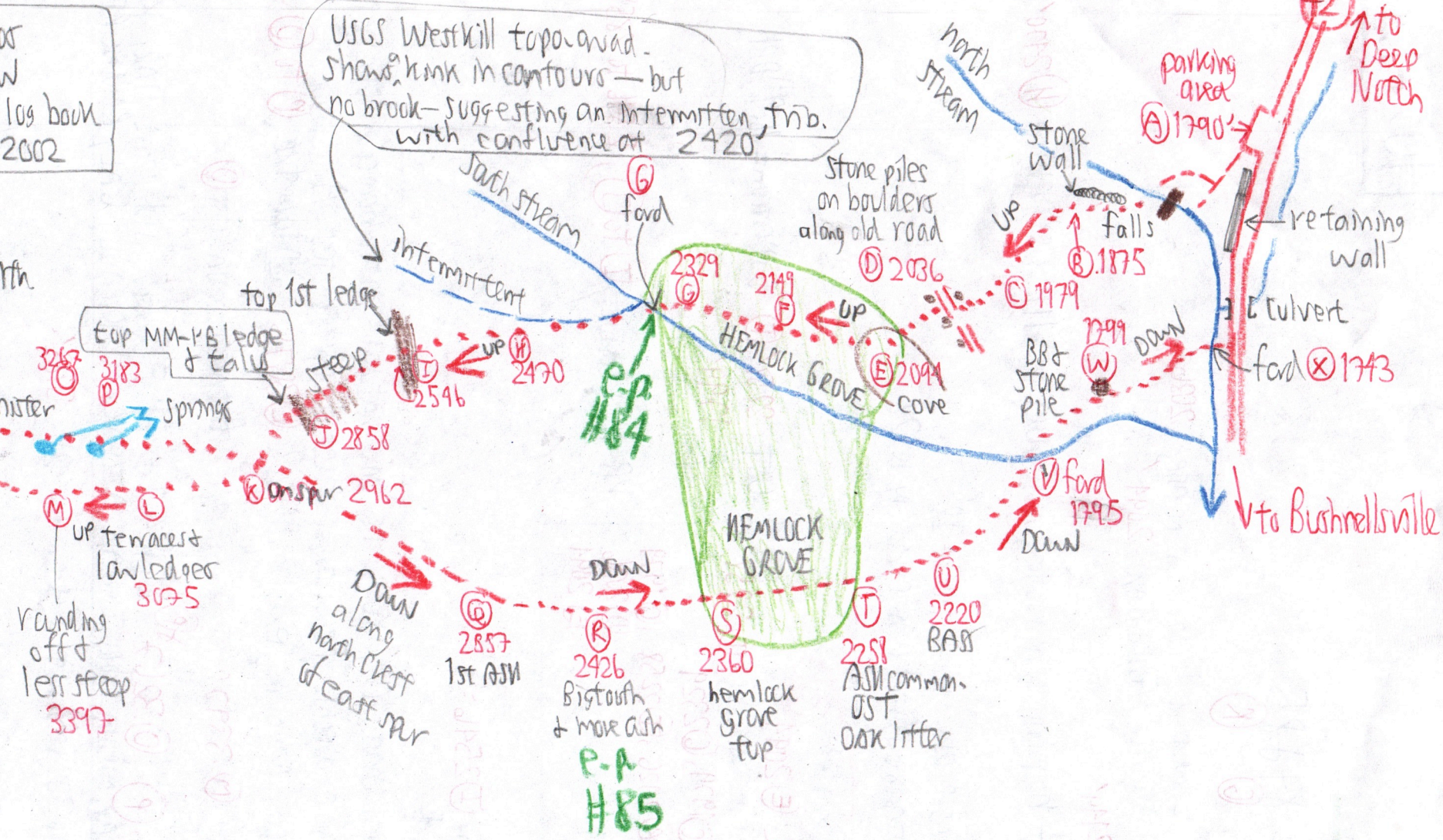
Springs at **C**, **O**, **P**, **O** 3267' ^{HP} have pH 4.9 & 44° F water. Sub dom. TIAR, YB
 ACT, URO, LAR, MILIUM, HYDRO, IMP, ALL, ARIS VC, RLAC, CAULO, GAL, ROMNC REC

SUG at **P** in 24" to 30" serotinit Beech to 224. 3188'

Ray Messeras placed new canister & log book in March 2002

3520
Halcott Mtn Summit

Canister
Lunch rock
Large wide terrace at ± 3420'



402-13