

FLUGERTOWN ROAD TO MONGAUP POND 6/8/02

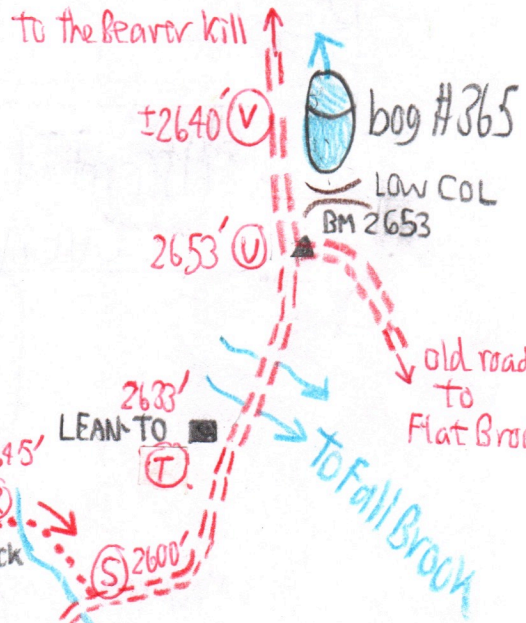
with Laurie Baker Moore

280-47

This is a difficult area to determine elevations because the highest pt. on the trail cannot be plotted precisely on the map. It is probably in a 2500 ft. col east of Mongaup Pond

Point	P	Δp	Δe	e calc	e map	time	R
(A) Flugertown Road	30.32	—	—	—	1970	10:45 AM 2:15 PM	
(B) Knob top	30.12	0.20	183	2153			$\frac{2500' - 1970'}{30.32' - 29.74''}$ $= \frac{530'}{0.58''}$ $= 0.914$
(C) Junc. with B'kill Trail	30.04	0.28	256	2226		2:31	
(D) low summit	29.98	0.34	311	2281			
(E) hemlock bog; turn NE	30.00	0.32	292	2262			
(F) old road ends; turn NW	29.98	0.34	311	2281		2:49	
(G) brooks from springs	29.90	0.42	384	2354	#1367	2:54	
(H) end hike at end of 1999 hike on Sand Pond Ridge [2583m 1999]	29.63	0.69	631	2601		3:03	
(I) ledge	29.78	0.54	494	2464			
(G) springs	29.88	0.44	402	2372			
(J) 2° = lots of Ash	29.94	0.38	347	2317			
(F) rejoin old road	29.99	0.33	302	2272			
(C) Junc.	30.02	0.30	274	2244		3:44	
(L) cross road to Sand Pond	30.08	0.24	219	2189		3:51	
(M) 1st bridge	30.11	0.21	192	2162		3:55	
(N) Summit	30.05	0.27	247	2219		4:00	
(O) 2nd bridge, Butternut Brook	30.15	0.17	155	2125		4:09	
(P) old log road to S	30.06	0.26	238	2208			
(G) Butternut Junc.	30.04	0.28	256	2226		4:18	
(R) 3rd bridge	30.02	0.30	274	2244		4:22	
(S) COL	29.74	0.58	530	2500	2500?	4:36	
(TT) Springs	29.82	SAME	→	2427			
(T) Stump	29.82	0.50	457	2427			
(U) Switchback	29.99	0.33	302	2272		4:52	
(V) Junction E of Pond	30.06	0.26	238	2208		4:54	
(W) Mongaup Pond Camo ground entrance	30.10	0.22	201	2171	2140	5:15	

280-48



"ERWIN" SUMMIT 3340'

lunch x view north

3195' (M) COL

ledges

2988' (O) boulder field

ledges + steep pitch

2645' (R)

2633' (T) LEAN TO

bushwhack route

2870' (P) top

2753' (Q) base

cave (N) 3078'

On contour due east

3286 (L) SUB reenters

e.p. #76

See # 210-54
probable error
See # 133

2570' (W)

ford

e.p. #77

return

RIDGE

2nd ledge

boulder with plastic tarp

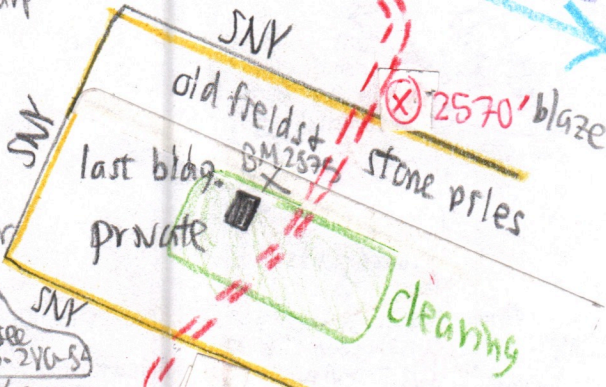
trail hunting

3085' (H)

1st ledge

2895' (G)

begin steeper ascent



e.p. #133
see p. 210-54

SNY corner

2740' (E) map
2717' calc

2840' (F)

bushwhack

leave road on ascent 2610' (D)

private

bldg.

clearing

bldg.

sign no parking

2865' (C)

park along road on narrow shoulder

SNY

Vegetation

- (F) ASH
 - (G) 2 ASH, big SUB Springs
- 1° e-p just below

Springs Flora:

VC	MITELLA	pH 4.8
PA	EUP	
LAP	NYRO	50°F
CALLO	IMP	NO oxygen meter
ALL	CSMO	
MIL	ARIS	
RANUNC	REC	
D GOLFIANA	BASS	

- (I) 80' canopy
- 28" YB
- 25" BC ±
- (H) 1 small ASH
- SUB dom
- (J) ASH common
- local blowdown
- 22" BC < 100 y,
- prob since last logging.
- (E) Hem-Sphag
- big - probe
- 14". May be
- worth sampling
- in 2003

- (D) some healthy 12" beeches
- re-circled in Beech file
- (N) BC big
- hemlock grove to W
- (R) ASH common
- (S) NO spruce anywhere
- far > 1 mile of here.
- The early surveyors
- must have seen it
- elsewhere or JT's
- gone. One found at
- * in 2011
- (V) DP glades open
- hemlock stand.

