

353-17 West Kill Mtn. South Spur

with Sean
McCarthy
5/30/1998

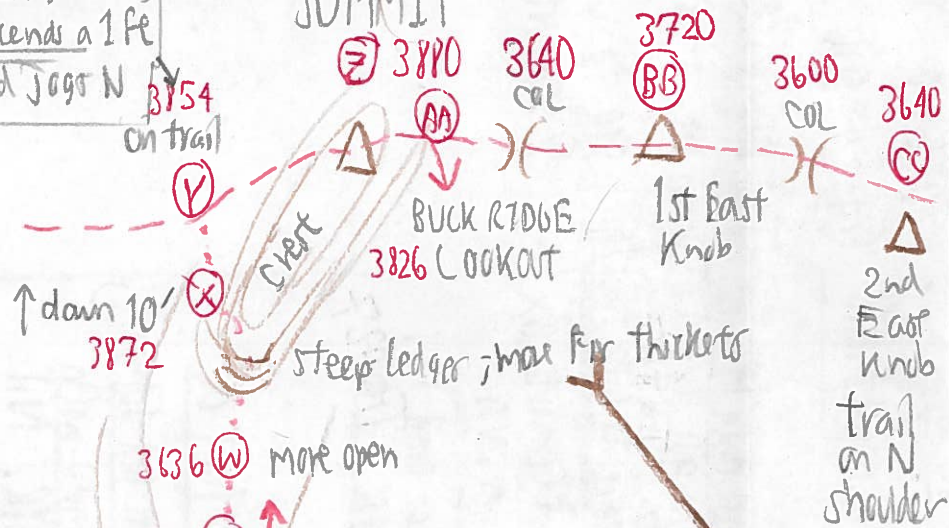
see 352-1

Site	p	dp	de	e calc	e map	time	r
(A) Diamond Notch Road	30-20	0.00	—	—	1480	8:45±	
(B) 1st quarry (LS area)	30.00	0.20	181	1661			3880-1480
(C) 2nd quarry	29.82	0.38	344	1824		9:20	30.20-29.55
(D) gentle slope	29.60	0.60	544	2024			
(E) base of steep pitch	29.50	0.70	634	2114			2400
(F) top ledge jumbo	29.40	0.80	725	2205			2.650 = 0.906
(G) on burned spur terrace	29.30	0.90	815	2295	2360		
(H) head of ravine	29.22	0.98	888	2368			
(I) ASH 90 years	29.16	1.04	942	2422			
(J) last ASH steep	28.77	1.43	1296	2776			
(K) top steep pitch	28.50	1.70	1540	3020			
(L) boulder & bony terrace	28.48	1.72	1558	3038			
(M) ledge top	28.33	1.87	1694	3174			
(N) on South Spur; 1°	28.25	1.95	1767	3247			
(O) lunch ledge	28.25	1.95	1767	3247		11:25	
(P) semi open ridge top	28.18	2.02	1830	3310			
(Q) ledge top	28.08	2.12	1921	3401			
(R) burn on W shoulder	28.05	2.15	1948	3428			
(S) COL	28.05	2.15	1948	3428	3500		
(T) sub stillm	28.00	2.20	1993	3473			
(U) ledge top basal	27.92	2.28	2066	3546			
(V) trees	27.88	2.32	2102	3582			
(W) RM-BC-B-YB-songs ^{PR}	27.82	2.38	2156	3636			
(X) descend 10'	27.56	2.64	2392	3872			
(Y) on trail	27.58	2.62	2374	3854		12:47	
(Z) Westkill Summit	27.55	2.65	2400	3880	3880	12:53-1:15±	

site	p	Δp	Δe	e calc	e map	time	r
(Z) West Kill Mt Summit	27.55	1.73	1560	3880	3880	12:53	
(AA) Buck Ridge Lookout	27.61	1.67	1506	3826		1:25	<u>3880-2320</u>
(BB) 1st East Knob	27.74	1.54	1389	3709	3720		29.28-27.55
(CC) 2nd East Knob	27.85	1.43	1290	3610	3640		= <u>1560</u>
(DD) 3500' sign, "cave"	27.88	1.40	1263	3583			1.73
(EE) Trail leaves crest	27.98	1.30	1173	3493	3500	2:00	= 0.902
(FF) Hollow Tree Mtn.	28.00	1.28	1155	3475	3500	2:25	
(EE) Trail leaves crest	27.98	1.30	1173	3493	3500	2:45	
(GG) Trail jogs W	28.30	0.98	884	3204			
(HH) Enter SUG	28.50	0.78	704	3024			
(II) 36" SUG	28.69	0.59	532	2952			
(JJ) HEM & SPR to 16"	28.81	0.47	424	2744			
(KK) ^{baldor} b/c/c/a: big HEM	28.84	0.44	397	2717			
(LL) enter 2 ^o ; 32" SPR	29.02	0.26	234	2554			
(MM) West Kill Falls	29.28	0.00	0	2320	2320	3:30	
(NN) Diamond Notch	28.95				2640	3:45 to 4:00	
(A) Diamond Notch Rd.					1480	4:42	

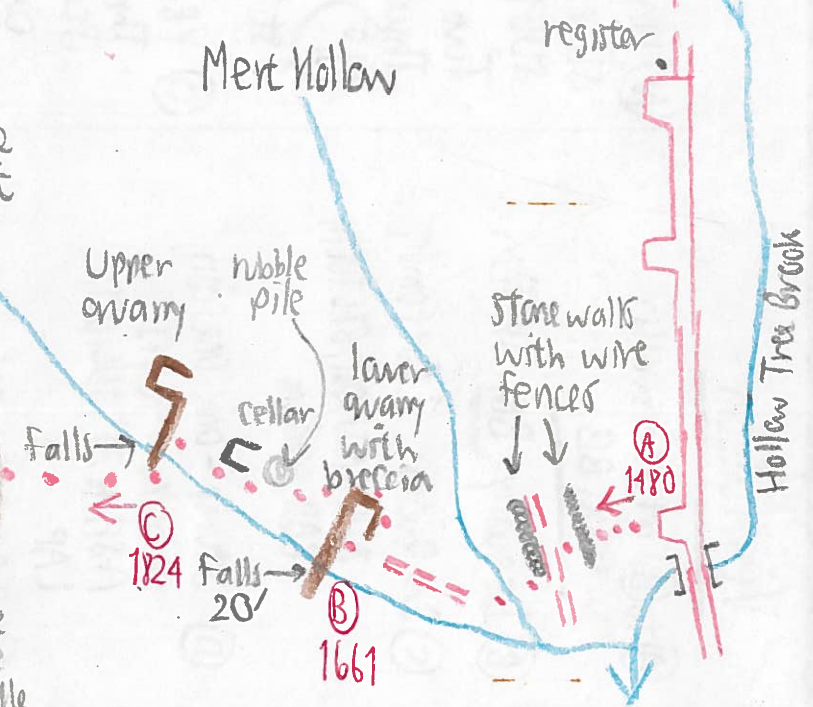
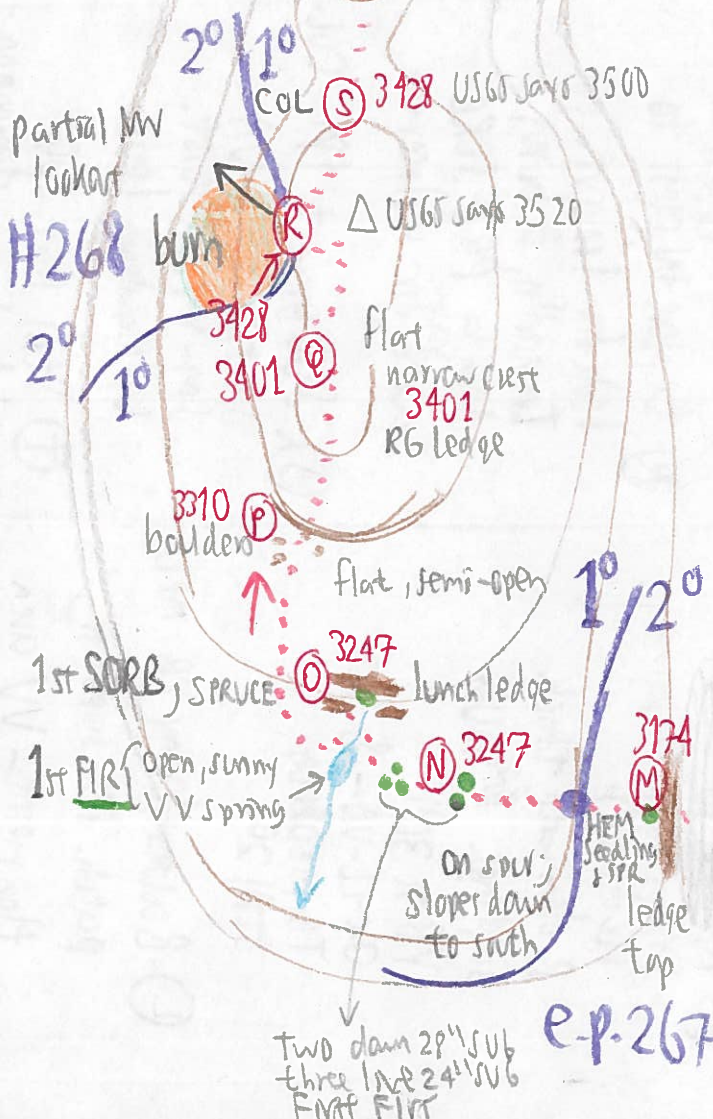
trail, heading east, descends a 1 ft ledge and Jags N on trail

WEST HILL MTN. SUMMIT



View down Ment Hollow from Buck Ridge Lookout: SPR scatterdam both sides of cirque to about 2800 or 2700 ft.

This burn may be part of the same one observed in September 1990 farther north.



Vegetation

353-201

Breccia in Quarry #1

- (A) to (B) at stone walls. OAK, BB
- (B) 1st quarry BB, ASH, NEM
- (C) 2nd quarry: 1 Butternut, ASH, BASS, OST, BIG TOOTH BASS seedlings
- (D) Stump - only one seen, no bark, >40 yrs. ASH to 24", SUB, OST, LAP
- (E) 2 BASS / OST, ASH, LAP
- (F) Multi-stemmed oaks, several to 20". 1st charcoal, probably sprouted after burn.
- (G) 1st SPRUCE: to 30' x 7", but under B-YB-RM. MO. Last charcoal.
- (H) Beech dom on S shoulder of spur, lived down to 12".

- (N) On south spur. Land slopes off to south. SUB 10". BC dom. Two dead SUB, 28" x 30" down. Three live SUB 24"
- (1) 1st two firs, 6" x 20".
- (O) YB to 30". Three SORBS saplings. Scat-FIR. MM OX, MC, RS SPR seedling & saplings. VV sprigs: probe only 4" to till. Several fir. V papilionacea? Mahon fl. Cx scab.??
- (P) Spruce atop lunch ledge (N) NW of, to 50' x 12". Semi-open ridge top. Flat. PIN, 28" YB, SPR, FIR,

- (V) continued YB, SPR 8" several. PIN, AMEL, FIR dom.
- (W) Max open. RM-BC-B-YB-SORBS-FIR-OP. Last hardwood-dam. stand on ascent steep ledges, dense FIR locally patchy. PB widely scat.
- (X) Thick fir pole stand. One 10" SPR
- (Y) Big SPR cut

The breccia is in a vein 0 to 12" (16"?) thick angling gently (maybe 5°) upward toward the north. SS on either side, above & below. See notes 1st Quarry only, but 6/4/98 none in 2nd. Not noticed by MK in 1990, but observed by Gary Lovett in 1996. Boulder on trail at NW corner just below 2nd bridge along Diamond Notch trail (collected fragment)

- (FF) FIR-SPR-YB-PIN SORBS Summit Hollow Tree Mn

(SUB returns at head of ravine.)

(I) Broken ASH at 12' up, 16" = 90 years. Tree 20' at base. Tree #13 LAP-SUB common.

MO, VA, B. Balders, SUB+B at base of next ascent.

(Q) RG ledge - big patch BC-B dom. Flat All-hardwoods. CNC-VV PB+SPR only scattered to 14". SUB few to 6". Narrow crest. CB

(R) Fir on W crest to ledge for lookoff. In add'n, a burn dom by PB+SORBS with fir replacement

(S) SUB grave to 1P". COL. SPR-FIR-BC-YB-VA SM-VV. Moist. UP Antegris ledge.

(T) Still scat-SUB & hardwood dominance

(U) Fir thicket & dom, SORBS & YB = boreal

(V) 1st YB on crest (except at burn (R)).

to clear trail. Reclimb onto SW spur.

(Z) Fir dom with Summit YB subdom.

One cut at 15" = 9" SPR diam = 75 years. Tree #67 to clear trail

MC, TB, LL, & CAMP VL, OX COPTIS in flower, VA

Fir cut to clear trail 9" = 60 years. Tree #27

AMEL BART. SORBS, CNC. Were kill it NOT a spruce-dominated summit, but a FIR summit with occasional SPR. Nil spruce repro.

(BB) Forest same as at (Z)

(CC) YBs to 24". Dead SPR 24"

(NB) SPR dead 20"

Col between (EE) & (FF). B dom in one patch, FIR, SPR, YB.

(J) SUB-B dom. Max YB. ASH last. Canopy to 80'. LAP.

(K) No roads seen since end of quarry road at (C).

(L) B dom with thick saplings. RM, SUB, YB to 30". OX-LL-VA-S TNT. TB, MEDROLA still 20.

(M) Balders, dom YB-MM. patch. SPR saplings, then massive VV area with young scat-SUB.

(N) NEM seedling, SPR sapling. 40' canopy. Ridge growth. BC dom, PIN, YB, a few SUBs to 10".

(II) SUB apnthy to < 24" enters & dominates. BIG MO. YB to 30".

(JJ) 36" SUB

(KK) NEM & SPR to 16"

(LL) NEM 24" to 30"

(UU) SPR 32" 2° growth.

353-20