

5/12/98

Touch Me-Not Mtn. ; Big Pond → Alder Creek

location	pressure	Δp	Δe	e calc	e map	time
A Big Pond	29.70	0.00	0	1940	1940	9:00 10:30
B	29.52	0.18	157	2097		
C	29.40	0.30	262	2202		
D	29.30	0.40	349	2289		
E	29.26	0.44	384	2324		
F 1st ledge	29.08	0.62	541	2481		
G	29.00	0.70	610	2550		
H	28.85	0.85	741	2681		
I	28.85	0.85	741	2681		10:00
J Junction	28.84	0.86	750	2690		9:40
K Summit	28.76	0.94	820	2760	2760	9:50

$$V = \frac{2760 - 1940}{29.70 - 28.76} = \frac{820'}{0.94''} = 0.872$$

Sun came at 9:58 the 1st time since May 7th, travel date to Fletcher Manns!

Touch-me-Not Mtn.

A Big Pond	29.70	0.00	0	1940	1940	11:50 2:18
L road jc.	29.51	0.19	166	2106		
M road jc	29.46	0.24	209	2149		
N enter plantation	29.36	0.34	296	2236		1:57
O leave plantation	29.26	0.44	384	2324		1:52
P trail summit	29.18	0.52	453	2393		11:28 1:47
Q road jc.	29.25	0.45	392	2332		1:40
R stone wall	29.28	0.42	366	2306		
S cellars	29.30	0.40	349	2289		11:45 1:33
T stone wall	29.34	0.36	314	2254		
U ford	29.52	0.18	157	2097	2090	11:54 1:12 → side trip to beaver meadow
V upper meadow	29.36	0.34	296	2236		
W trail bends	29.27	0.43	375	2315		12:07
X trail summit	29.20	0.50	436	2376		1:00
Y trail bends	29.28	0.42	366	2306		
Z ford	29.52	0.18	157	2097	2090	12:29 → 12:42

$$V = \frac{2090 - 1940}{29.70 - 29.52} = \frac{150}{0.18} = 0.83$$

Use the Touch-me-not Mtn-rate of 0.872. The 0.83 rate is over too small an elevation range for accuracy.

Trail Problems

441-6

The 90° bend at (M) is not obvious. Mk continued straight SSE on old road & missed turn to ENE.

Because of open woods, no trail used, distant markers, the trail is difficult to follow from (M) to (N).

The junc. at (O) could easily be missed ^{while} hiking west. One of the two markers indicating the bend has been removed. The junc. is about 150' SW of the 15' boulder. At the junc. is a tight clump of 4 spp. growing together: CARP, YB, RM, & SUG.

At (Z), there is a ford. Because water was high, hike ended here. Another 100 feet up the bank would be on the Alder Lake highway.

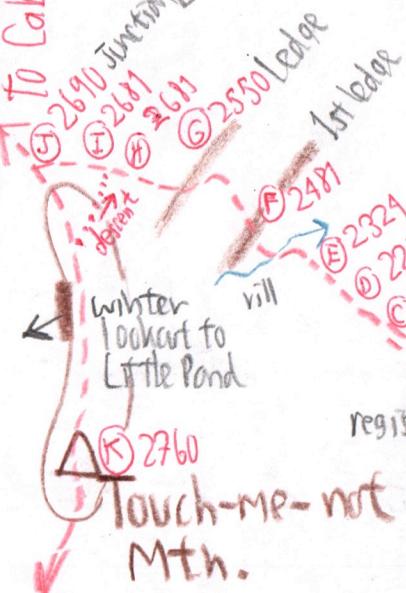
(A) is 22.7 miles from The Valkyrian.

3.2 miles from Big Pond to Alder Lake, says sign at (A).

Sun came out at 9:58, 1st time since 5/7/98 the day of travel from the ADKS.

To Cabot Mtn.

Junction [sign: 0.8 mi to Big Pond, 3.6 to Alder Lake]

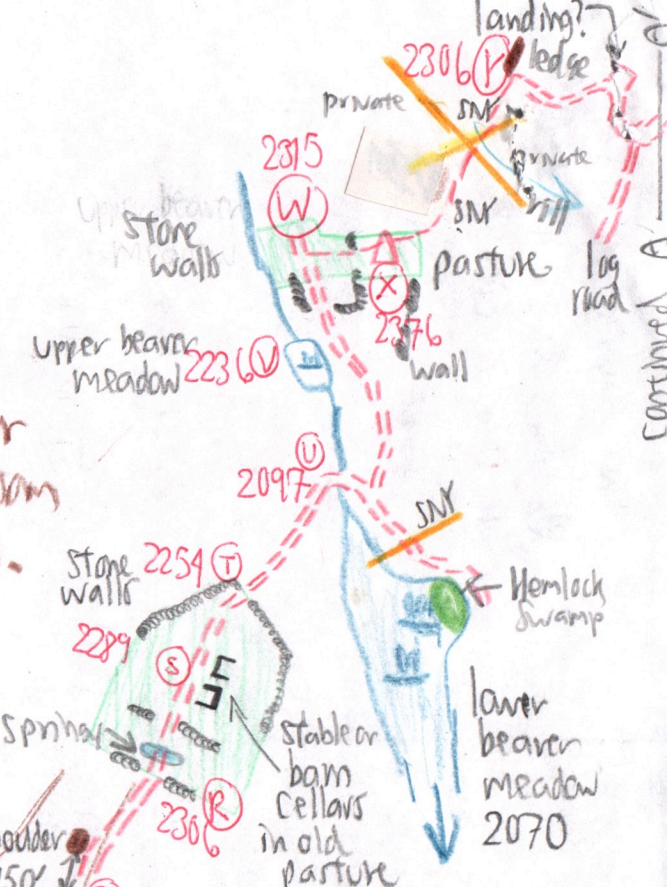
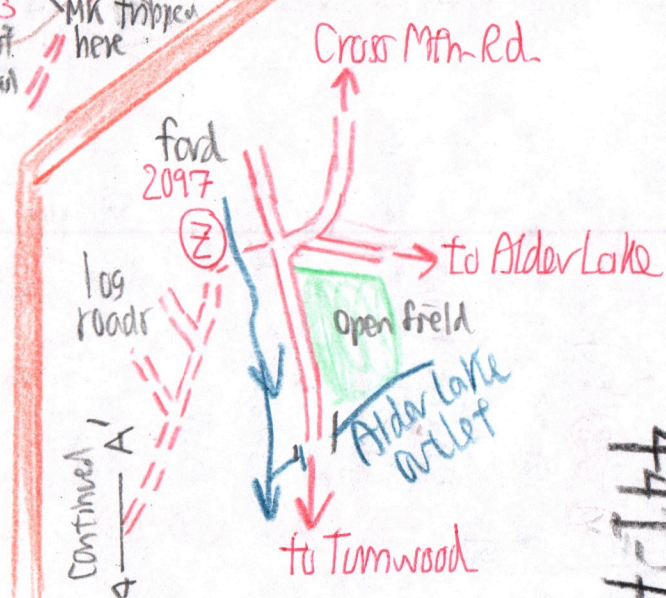
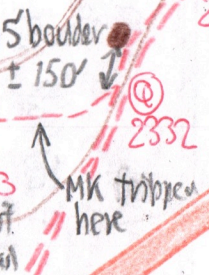


No ledge in Big Pond outlet



2640 Δ

S. spur Barkaboom Mtn.



4417

TOUCH-ME-NOT MTN.

(A) to (B) Registration booth
has graffiti dating back to
8/15/92, 4/20/93 & 8/22/93.

OAK at register

(B) Black birch at 2097', OAK

(C) End log road 2202'.
Stumps ± 30 years.

(D) BASS, OST 2289'

(E) base of 1st steep pitch,
2324': Springy-

ARIS	VPAP
VROT	TE
OSMO	ALLIUM
CLAYT	IMP
CK PLMNT	RANUNC
ERY	ABORT
CAULO	MITELLA
PA	DIC CAN
LAP	

Stumps > 40 years

(F) top 1st ledge 2481'

(G) 14" OAK, some ASM, 2550'

(H) ledge top, becoming
less steep 2601' above

(I) highest point on trail(?)
2671

(J) Trail Junc. 2690'. Sign
board says 0.8 mile to
Big Pond & 3.6 to Alder
Lake. Junction is
below N end of
Touch-me-not Summit,
& incorrect on 1996
Trail map.

(K) Touch-me-not Mtn.
Crest. 2700 to 2760'.
BC dom., B, SUB, RM
OAK to 22", ASH, MO.

Mitch, MC, AA, EB on
Summit. Panax.
Canopy about 45'.
OAKS common along
trail, which follows
west crest of summit.
Winter lookouts to
Cabot Mtn & Little Pond.

Vegetation - Big Pond
to Alder Lake

(A) HEM along Barkaborn Road
Valley; between (A) & (L) = Hamam

(L) = HEM just below.
Stumps 40 to 50 years old,
turned black with age

(M) = open N. Woods.

(N) TASP

(O) CARP, CEAT, big AMEL
Norway Spruce to 30 or 40'
* 6" DBH. OST, ASH

(P) Open Woods = SUB-BC-ASH. One ASH 20". BASS: BC to 20"
Several scot SUB 24 to 27" → ∴ old Sugarbush?

(Q) Junc. marked by a tight
clump of YB, RM, SUB &
CARP growing together.

(U) Two merfuning Strubus
Apple.

(V) upper beaver meadow:
VV + ELM + RM +
Graminoids

(W) to (X) Apple, Bristle, OST
Habermann arbutata lvs
only at E end of pasture.
ASH. Small Norway Spruce at (X)

(Y) big BASS near property
4 corners

The beaver meadow S of
(U) has no spruce or fir. Present are
441-8
VV + HYDRO + LAP.
Strubus is 20' to 80' +
Variable in age, about 8 trees
Kernloch Swamp SE of (T)
has YB, RM, OX, BASS

(Y) Stumps 30 to 40 years old
on land near SNY.

(Z) ASH