

# Huckleberry Brook Ridge (HBR)

6/11/97 exploratory  
6/4/97 Peat sample #320

291-6

site	P	Δp	Δe	e calc.	emap	time →			rate
						6/4	JUNE 1		
(A) Trail head, Huckleberry Brook Road	30-14	0-00			1460	7:35 AM	8:25 AM	12:30 PM	2800-1460'
(B) Red pine plantation	29-95	0-19	182	1642					= 1340'
(C) Turn east on old road	29-94	0-20	191	1651					
(D) Trail rerouted around spring	29-90	0-24	230	1690					30-14" - 28-74"
(E) log landing	29-84	0-30	287	1747					= 1.40"
(F) leave log road nr-pasture	29-81	0-33	316	1776					
(G) Switchback	29-67	0-47	450	1910					
(H) Switchback	29-61	0-53	507	1967					r = 1340
(I) enter long level						10:28			1400
(J) end long level	29-43	0-71	679	2139		10:18			
(K) Switchback onto log road	29-34	0-80	766	2226		10:05			= 0.957
(L) Leave log road; turn S	29-26	0-88	842	2302		10:10			
(M) Big boulder	29-22	0-92	880	2340					
(N) Highest point; begin descent	29-08	1-06	1014	2474			9:28	11:40	
(O) SW corner	29-10	1-04	995	2435					
(P) Col in pasture	29-18	0-96	919	2379	2380	9:55 AM		11:22	
(Q) old road to SE; upper pasture	29-06	1-08	1034	2494					
(R) summit	28-90	1-24	1187	2647	2700		9:50	11:10	
(S) Norway spruce in col	28-88	1-26	1206	2666	2640		10:00	10:40	
(T) summit	28-74	1-40	1340	2800	2800		10:12	→ 10:28	

see p. 291-9

(J) Now

## Additional sites on descent

(RR) Col, small	28-98	1.16	1110	2570					
(RRR) Two big boulders	28-90	1.24	1187	2647					

Present Vegetation 291-7

Forest History

- ⓑ 1642 ✓ DAK, NEM, BASS, OST  
Red pine plantation with blowdown on trail
- ⓒ 1651 CARP, BB, OST
- ⓐ 1910 SUG with 2 gray markers indicates switchback
- Ⓣ 2139 SUG, ASH, BASS, P. BRAUNTI
- Ⓚ 2226 NEM-YB-SUG ✓ BB to Ⓛ
- Ⓛ to Ⓜ ✓ PB, 26", one lone tree. The bark on trunk gray & not peeling, white & peeling on < 12" branches.
- Ⓝ 2474 ✓ DAK-SUG-RM - 33" BC
- Ⓟ to Ⓠ SUG & RM multi-trunked, 6" to 10"
- Ⓡ 2647 BC-SUG-MO-OST open summit \*  
PCTI, RS, DP-RA dense; ASH to 20"
- Ⓢ BG-NEM-SUG-YB-B
- Ⓣ 2666 DP-SUG-BC very open.

NEM swamp in col Ⓟ has CIM, SPHAG, RM, YB, MC, OX, LL. 3" to resistant. NEMs only 20' tall under YB-RM

- Ⓤ 2800 Open stand on summit a few BC dom to 18", most smaller; SUG to 18", → mature dead B, young repro B; MO to 8".  
OX-ERY-DP-PCTI-AA-TIAR-CLAVT.  
VPAP, VC, HYDRO, ARTS on W shoulder
- Ⓡ Turn back point = OST-ASH-YB  
less open, more B repro.

- ✓ Ⓢ NEM dom; some DAK
- Ⓟ Bog N of col, peat sample #320, elev ± 6950 years, 2370  
NEM dom, YB, RM. NEM to 25".  
BASS  
ILEX VERT ✓  
CIMN  
OX  
MNIUM  
COPTIS  
ONOCLEA  
V V  
CHERLONE

at 23" to 27" depth in center of ILEX  
Initial probe 18" to 20" at NE end of Ilex patch

- Ⓠ to Ⓡ NEM grove on S, understory to hwdrs
- \* Ⓡ continued. SUG & BC seedlings but few saplings.

- ⓑ Red <sup>small</sup> pine plantation about 45 to 50 yrs old. Recent blowdown on trail.
- ⓒ to Ⓠ follow old log road. Ⓢ stump before 1957
- Ⓠ to Ⓡ pasture, aban, on east
- Ⓣ to Ⓛ follow old log road which seems to end abruptly at Ⓛ.
- Ⓚ stump before 1957.
- Ⓟ pastured in col
- Ⓠ farm road up from Ⓟ to Ⓠ. On south, RM & SUB are 6" to 10" multi-stemmed, suggesting heavy cutting.
- Ⓡ Very open summit with dense DP & RA.  
Stumps old, with bark off, cut before 1957. OCT 1990 notes suggest 1980 Forest Tent Cartwright
- Ⓢ Norway Spruce plantation dates to prob. 1930s. DBHs to 16"
- Ⓣ Old MO to 8" dunned & dying suggesting cutting about one <sup>MO</sup> life-span ago, before 1957.
- Ⓤ Stumps barkless.

Ⓡ ASH cut in COL to clear trail. Tree #23  
13" diam = ± 92 years.

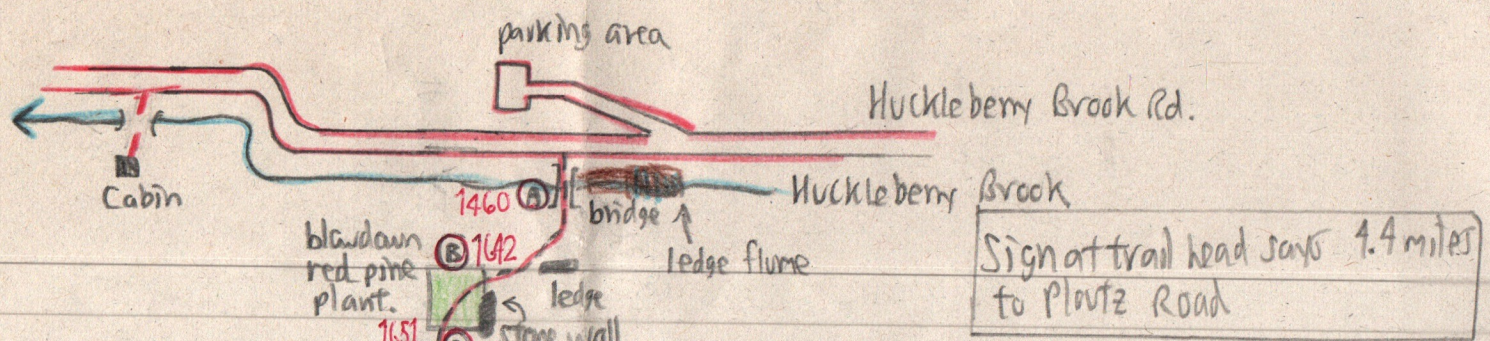
- Ⓟ A few NEM cut at E edge of bog; bark still on stumps, maybe 10 years?

SINY owned all the existing lots on HBR in 1957.

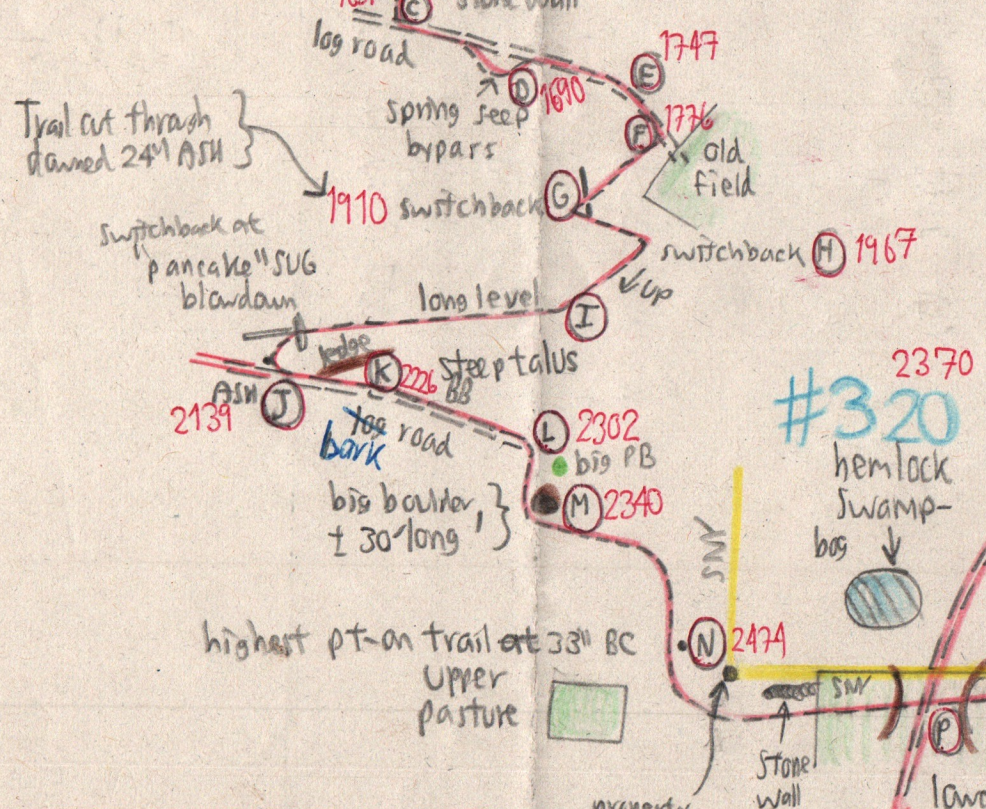
#320 Huckleberry Brook Ridge from the west end

291-8

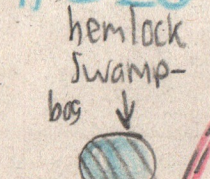
6/11/97 exploratory, 6/14/97 bog sampling



Sign at trail head says 4.4 miles to Plantz Road



#320 2370



old road shown on USGS quad on Mangrove trail

highest pt. on trail at 33' BC Upper pasture

property corner 2455

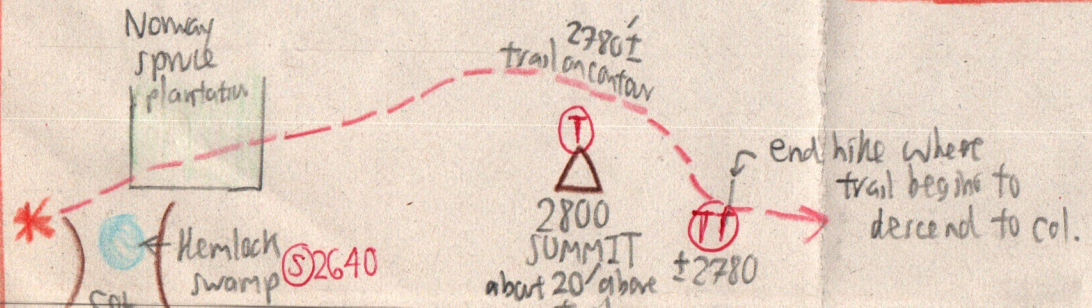
lower pasture in col 2380

possible upper pasture 2494

2700 Summit  
slanting ledge fragment which slid down  
trail 5' below summit

2570  
two big boulders ± 16' long x 8' high  
+ flat on top  
Summit  
Continued below at \*

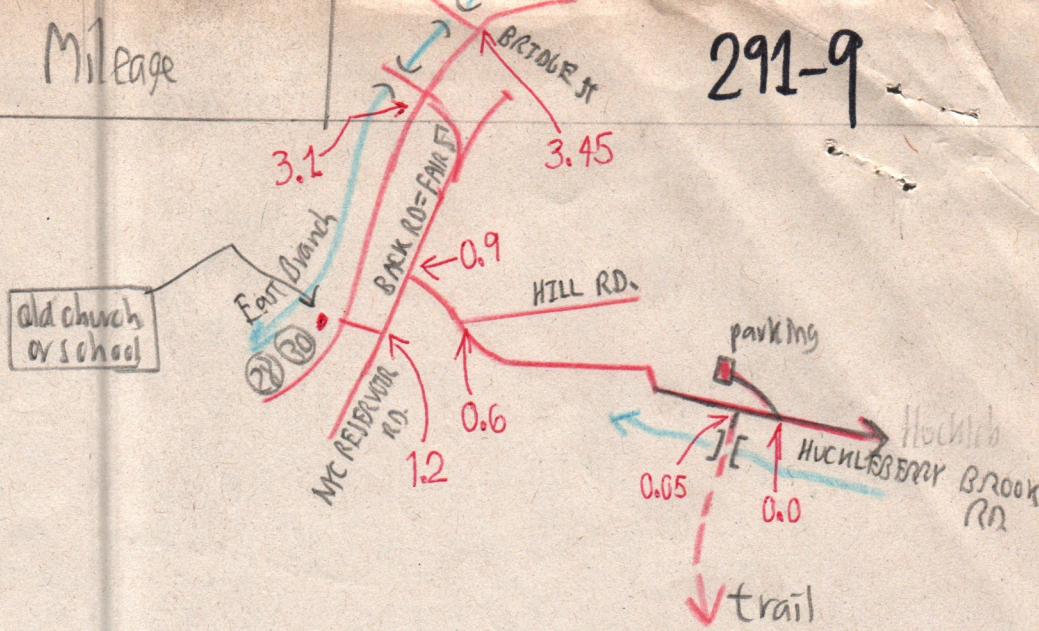
continued



From here east there are blue paint marks on the trees as well as red

# Highway Mileage

291-9



## Timetable 6/4/97 to core bog only

Lv. trail head	8:30	(A)
Bog	arr 9:18	north of (P)
	lv 9:55	" " "
	10:10	(L)
	10:15-10:20	(J)
	10:28	(I)
Ar trail head	10:55	(A)